



December 2018

CAPITAL PROJECTS REPORT
to the

Citizens' Oversight Committee

MEASURE J HIGHLIGHTS

Cypress College

- ▶ Construction Documents (100%)
- ▶ New SEM plans submitted to DSA
 - DSA Approval Received October 19th, 2018
 - Expected groundbreaking is February 8, 2019
- ▶ New VRC/SAC
 - DSA Approval received on August 23rd, 2018
 - Expected Groundbreaking is March 15, 2019
- ▶ Parking Lot 5
 - Construction Activities are 99% Complete
 - Completion by November 2018

MEASURE J HIGHLIGHTS

Fullerton College

- ▶ Renovate 300 & 500 Buildings
 - Construction Documents are in progress
 - Fire Hydrant Flows are being evaluated
- ▶ New Instructional Building & Chilled Water Plant Expansion
 - Schematic Design has been completed
 - Design Development meetings have begun

MEASURE J HIGHLIGHTS

Anaheim - NOCE

- ▶ 7th and 10th Floors Buildout Project
 - 7th Floor construction has been completed
 - 10th Floor framing is complete. Drywall mudding and tapping is in progress. Rough-in of electrical, HVAC, and plumbing is also in progress
- ▶ 5th & 2nd Floors Projects
 - Construction activity on both floors is complete
 - The project has entered the close-out phase
 - Notice of Completion will be submitted to the Board of Trustees on December 11, 2018 for approval.

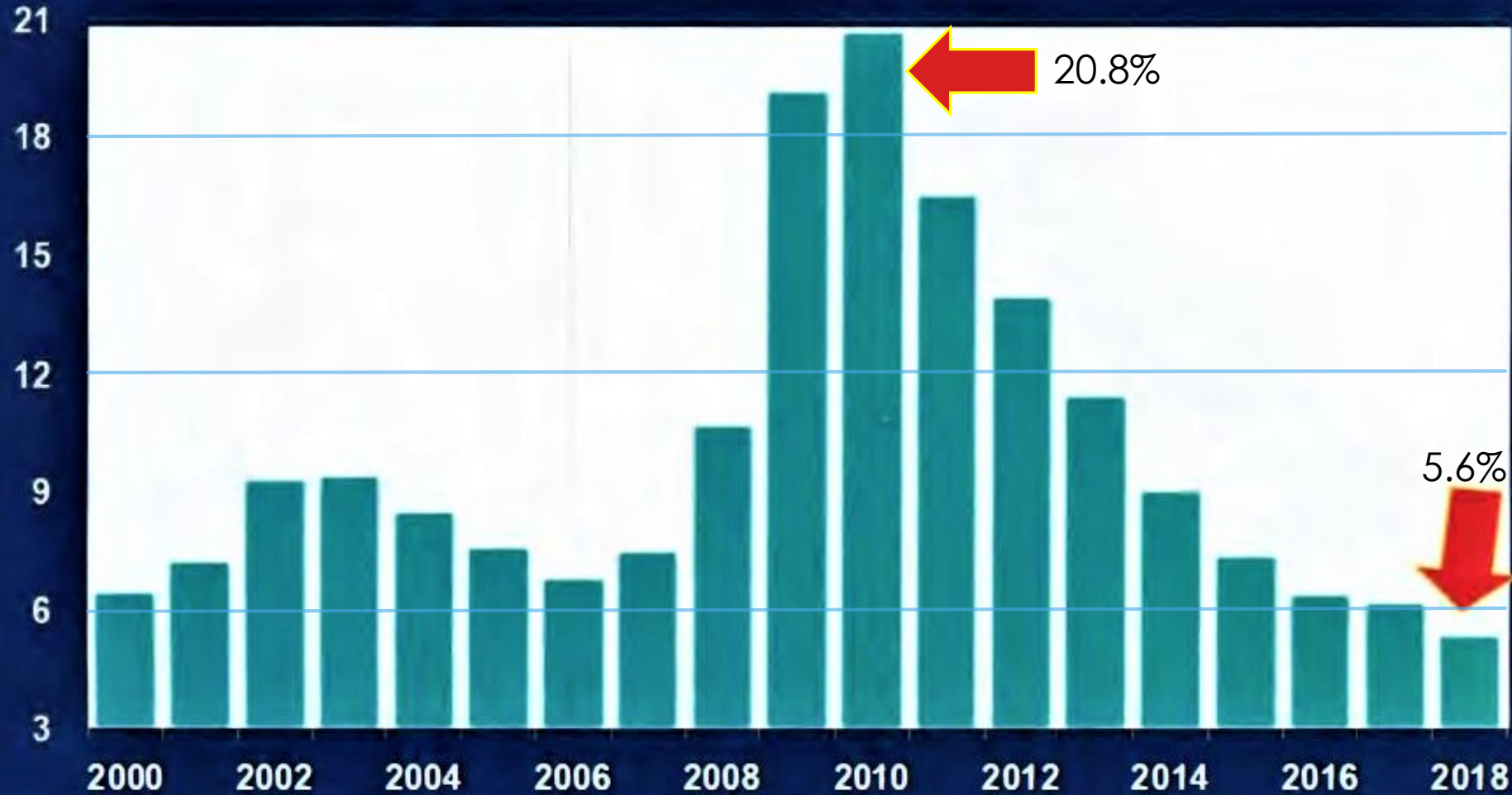
GENERAL HIGHLIGHTS

- District Standards for Furniture, Finishes, Space Standards
- District Information Technology (IT) Network Refresh Project
 - Board Approval received to proceed with procurement
 - Network Refresh RFP – Responses due in November
 - Implementation targeted to start in early 2019. Full scope of project expected to be completed by Fall 2019

Unemployment Rate for Construction Workers / U.S.

percent

2000 -- 2018





Date 12/05/2018

Source: Presentation at CCFC 2018

Unemployment Rate / Los Angeles County

1983 -- 2018

rate

12%

Lowest rate ever

10%

8%

6%

4%

1983

1988

1993

1998

2003

2008

2013

2018 F

12.2%

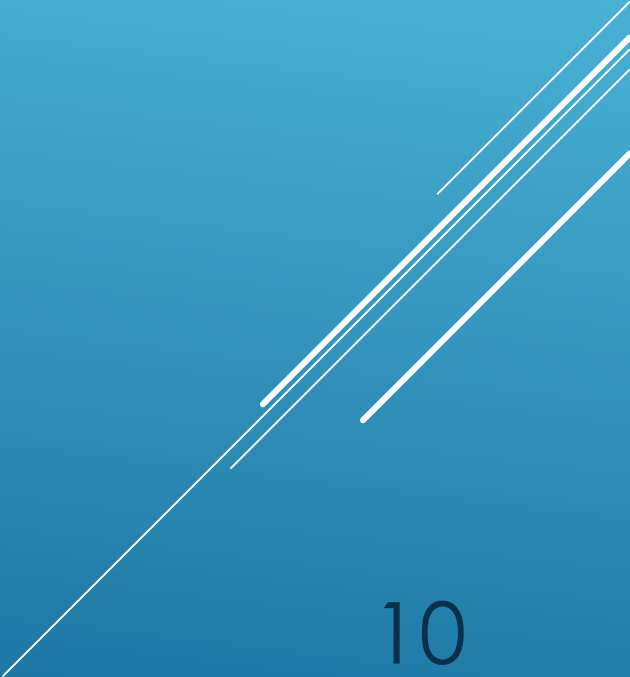
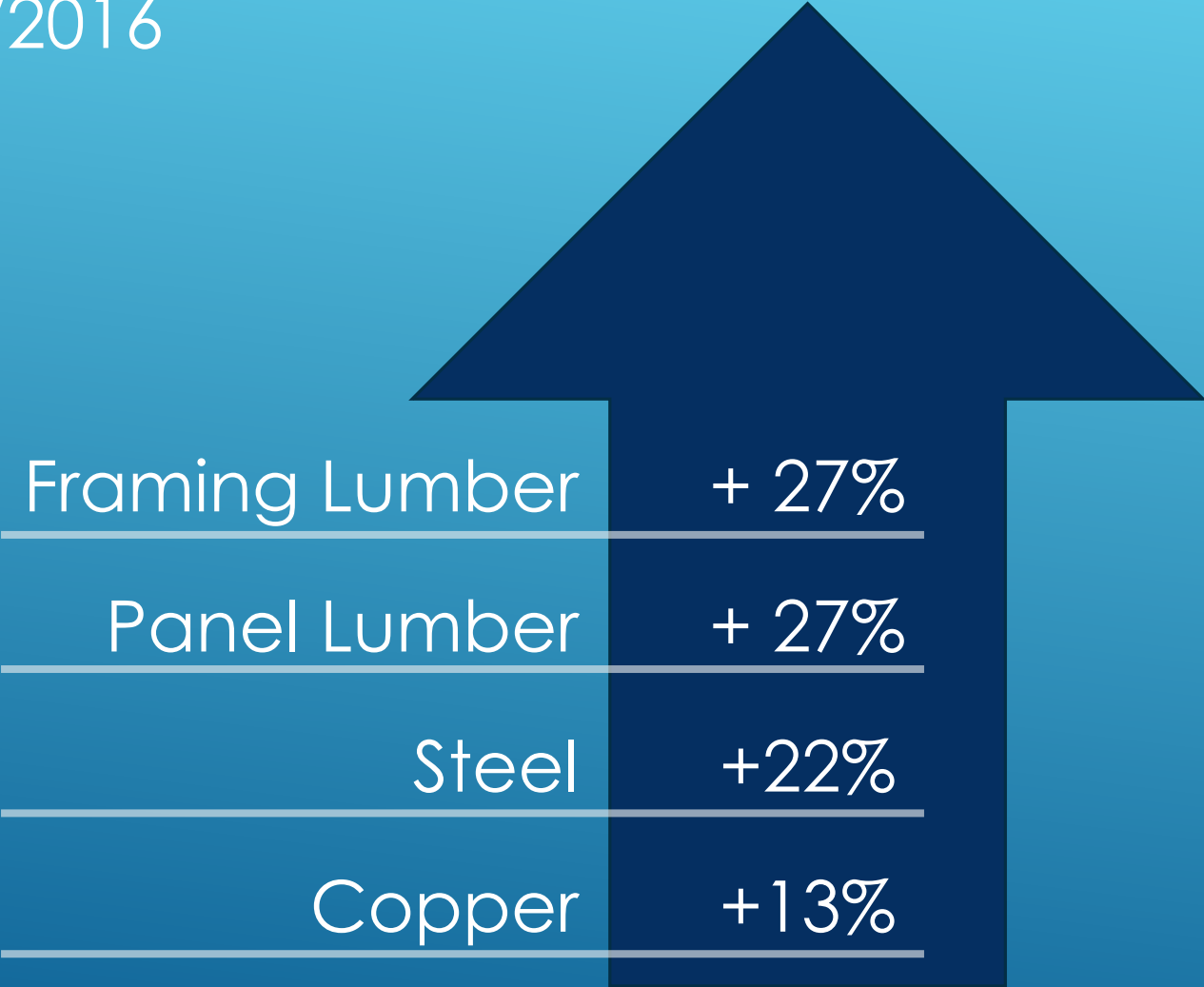
4.3%

Local Public Building Programs

LA Metro	\$30 Billion
Los Angeles International Airport	\$23 Billion
Los Angeles Unified School District	\$4 Billion
CalTrans	\$3.6 Billion
LA County Correctional Facility	\$2 Billion
Long Beach Unified School District	\$1.3 Billion
Los Angeles Community College District	\$3.3 Billion

MATERIALS WITH GREATEST COST INCREASES

Since 2015/2016



ANNUAL ESCALATION FORECAST

- Historical Average – 2%
- November 2018 3-year Forecast – 4% to 10%
- Turner Building Index – 5.63%
- LACCD – 6%
- California Community Colleges Chancellor's Office (CCCCO) – 5.04%*

*Source: California State Department of Finance

PROJECTS IN FEASIBILITY, PLANNING, PROGRAMMING, AND DESIGN

- Campus Site Plans
- Project Status Reports

Date 12/05/2018

12

AERIAL VIEW – CYPRESS CAMPUS

Veterans' Memorial Bridge & Tribute Garden [Pre-Bidding]

New Science, Engineering and Mathematics Building [Pre-Bidding]

Swing Space Projects Parking Lot #5 [Close-Out]

Swing Space Projects Gym II Space for VRC/SAC [Close-Out]

IT Network Refresh (Throughout Campus) [Bidding]

Mass Communication & Security Systems Upgrade - Safety Film (6 Buildings on Campus) [Close-Out]

Mass Communication & Security Systems Upgrade - Door Replacement (Building 9) [Construction]

New Veterans' Resource Center & Student Activities Center Expansion [Pre-Bidding]

The main aerial image shows the Cypress Campus with several areas highlighted in yellow. Arrows point from these yellow areas to inset images of specific projects. The projects include: Veterans' Memorial Bridge & Tribute Garden (Pre-Bidding), New Science, Engineering and Mathematics Building (Pre-Bidding), Swing Space Projects Parking Lot #5 (Close-Out), Swing Space Projects Gym II Space for VRC/SAC (Close-Out), and New Veterans' Resource Center & Student Activities Center Expansion (Pre-Bidding). A list of other projects is provided at the bottom of the aerial view.

Date 12/05/2018

UPDATES ON CAMPUS PROJECTS – CYPRESS COLLEGE

New Science, Engineering, and Mathematics Building

- ▶ DSA approval was received on October 19th, 2018.
- ▶ Pre-Qualification of Trade Contractors is complete.
- ▶ Bidding is underway.
- ▶ Groundbreaking is expected February 8, 2019.
- ▶ Estimated duration of construction is 24 months.

Date 12/05/2018

UPDATES ON CAMPUS PROJECTS – CYPRESS COLLEGE

New Veterans' Resource Center & Students Activities Center Expansion

- ▶ DSA approval was received on August 23rd, 2018.
- ▶ Prequalification of Trade Contractors is complete.
- ▶ Bidding is underway.
- ▶ Groundbreaking is expected March 15, 2019.
- ▶ Estimated duration of construction is 17 months.

UPDATES ON CAMPUS PROJECTS – CYPRESS COLLEGE

Swing Space Projects

- ▶ Parking Lot #5 Expansion – Construction is complete. All stalls are open for public use.
- ▶ Student Activities Center moved to Swing Space at Gym II – This project has moved into the close-out phase.

Date 12/05/2018

16

PARKING LOT 5 PROGRESS

10/31/2018



Date 12/05/2018

UPDATES ON CAMPUS PROJECTS – CYPRESS COLLEGE

Update / Improve Infrastructure

- ▶ Scope of work is part of New Science, Engineering, and Mathematics building design documents.

Mass Communication & Security System Upgrade

- ▶ Scope of work is part of New Science, Engineering, and Mathematics building design documents.
 - Mass communication system will be tied in to the fire alarm. Scope of work will include upgrading the existing fire alarm to separate the renovated SAC and new VRC to a stand-alone fire alarm panel.

CYPRESS COLLEGE – NOISE CONTROL

Planning Phase

- ▶ Specialty Consultant with trade involvement

Communication Phase

- ▶ Internal – Faculty and Staff
- ▶ External – Community

Execution and Monitoring Phase

CYPRESS COLLEGE – LOT 7 CLOSURE

Positive impacts:

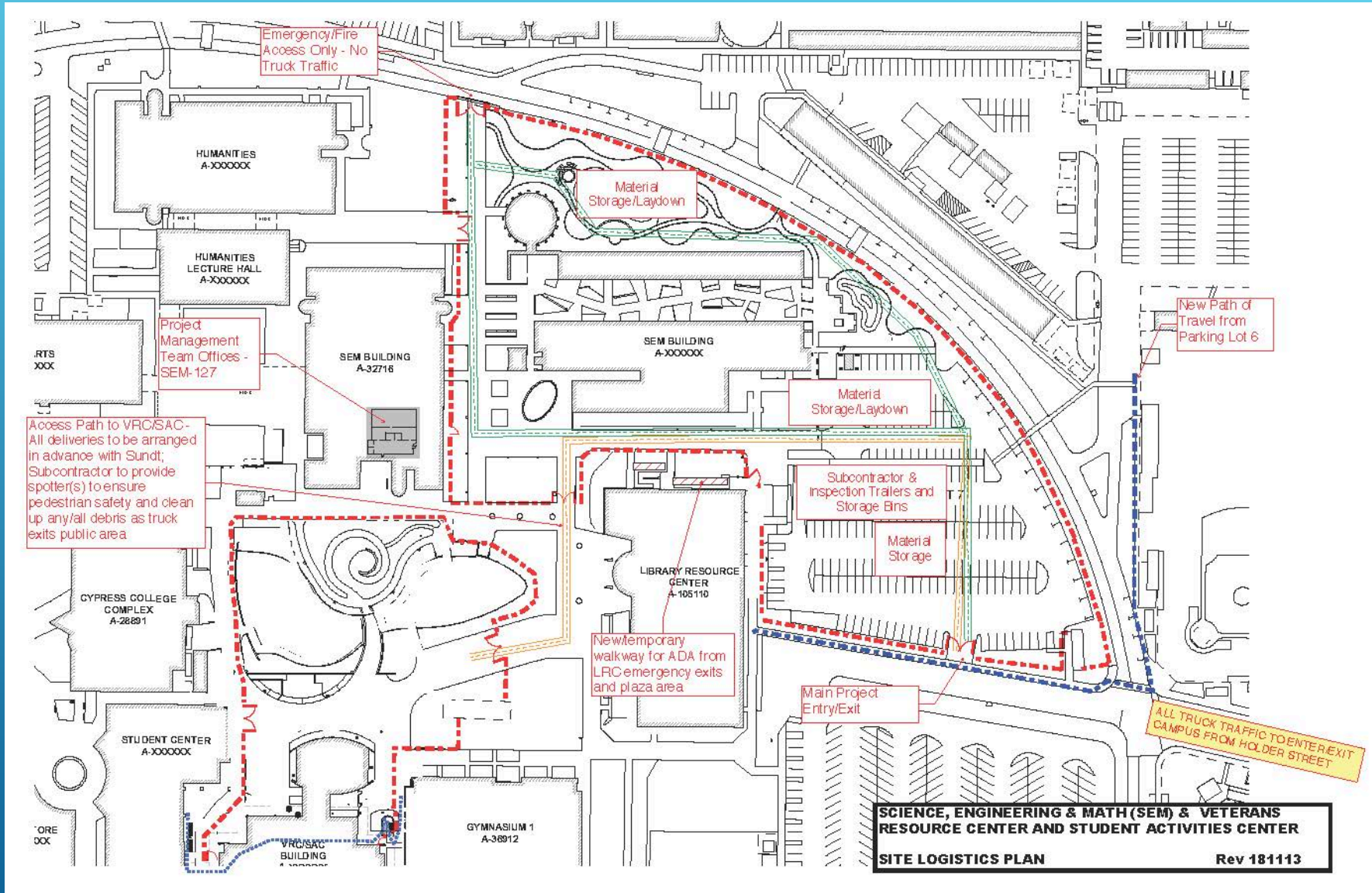
- ▶ Enhanced Public Safety:
 - ▶ Reduced pedestrian interaction with construction site
- ▶ Increased Construction Access / Efficiency:
- ▶ Improved Site Staging / Material Handling

Negative impacts:

- ▶ Reduction in Parking Stalls
 - ▶ Approximately 80 stalls will be removed from inventory for the duration of the project.
 - ▶ Offset by Parking Lot #5 Expansion

20

CYPRESS COLLEGE – WAYFINDING



Date 12/05/2018

AERIAL VIEW – FULLERTON CAMPUS

The diagram features an aerial photograph of the Fullerton campus with several project areas highlighted in yellow. Arrows point from text labels to these areas. Below the aerial view are two architectural renderings: one of a renovated building and one of a new instructional building.

Update / Improve Infrastructure - Sewer Line Replacement to Buildings 300 & 500
[Agency Review]

New TES & Chilled Water Plant Expansion
[Phase I - Schematic Design]

IT Network Refresh (Throughout Campus)
[Bidding]

New Maintenance & Operations Building
[Pre-Planning]

New Parking Structure
[Pre-Planning]

Renovate Buildings 300 & 500
[Construction Documents]

New Instructional Building
[Design Development]

Date 12/05/2018

UPDATES ON CAMPUS PROJECTS – FULLERTON COLLEGE

New Instructional Building

- ▶ BN Builders, Inc. and Roesling Nakamura Terada Architects, Inc., the Design-Build Entity, started the Design Development Phase on August 25th, 2018.
 - ▶ Initial Design Development Drawings were reviewed by the Building User Group during a meeting held September 28th, 2018.
 - ▶ A second progress review meeting was held on October 26th, 2018.
- ▶ The Chilled Water Plant Expansion is part of the criteria documents for this project. Expansion will address the additional demand derived from the operations of this new building.

NEW INSTRUCTIONAL BUILDING – 100% DESIGN DEVELOPMENT RENDERINGS



West Elevation - Design Development

BNBuilders | RNT Architects

Fullerton College Instructional Building and Central Plant Expansion

NEW INSTRUCTIONAL BUILDING – 100% DESIGN DEVELOPMENT RENDERINGS



South Elevation – Design Development

BNBuilders | RNT Architects

Fullerton College Instructional Building and Central Plant Expansion

NEW INSTRUCTIONAL BUILDING – 100% DESIGN DEVELOPMENT RENDERINGS



East Elevation – Design Development

BNBuilders | RNT Architects

Fullerton College Instructional Building and Central Plant Expansion

NEW INSTRUCTIONAL BUILDING – 100% DESIGN DEVELOPMENT RENDERINGS



North Elevation – Design Development

BNBuilders | RNT Architects

Fullerton College Instructional Building and Central Plant Expansion

NEW INSTRUCTIONAL BUILDING – 100% DESIGN DEVELOPMENT RENDERINGS



Building Section - North/South

BNBuilders | RNT Architects

Fullerton College Instructional Building and Central Plant Expansion

NEW INSTRUCTIONAL BUILDING – 100% DESIGN DEVELOPMENT RENDERINGS



Building Section -North/South

BNBuilders | RNT Architects

Fullerton College Instructional Building and Central Plant Expansion

UPDATES ON CAMPUS PROJECTS – FULLERTON COLLEGE

Renovate Buildings 300 & 500

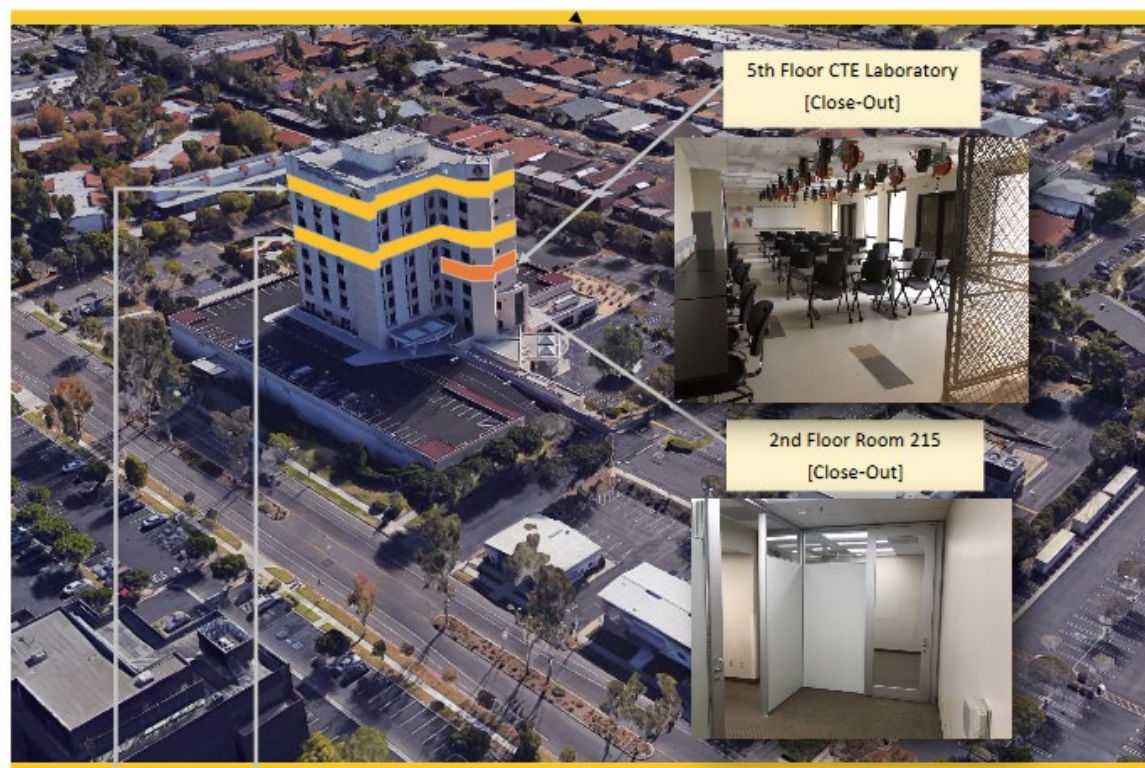
- ▶ R2A Architecture is proceeding with the Construction Documents.
 - ▶ 60% Construction Documents were reviewed on November 2nd, 2018.
 - ▶ 100% Construction Documents are expected to be delivered in January, 2019.
- ▶ Completion of the Working Drawings phase of the project is expected in January, 2019.
- ▶ Historical preservation group Fullerton Heritage has come onboard to review the design for the renovation for adherence to preservation standards.

UPDATES ON CAMPUS PROJECTS – FULLERTON COLLEGE

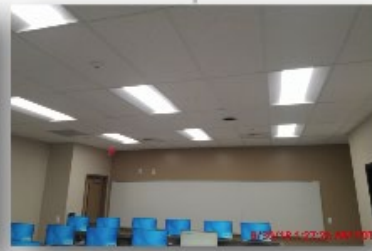
Chilled Water Plant Expansion Phase I & II

- ▶ The Chilled Water Plant Expansion is part of the criteria documents for the New Instructional Building. Expansion will address additional demand derived from the operations of this new building.
- ▶ BN Builders, Inc. and Roesling Nakamura Terada Architects, Inc. and the Campus is exploring to install the planned three chillers and three cooling towers in one phase.
- ▶ BN Builders, Inc. will be presented a detailed cost estimate in the coming weeks.

AERIAL VIEW – ANAHEIM CAMPUS



10th Floor Buildout
[Construction]



7th Floor Buildout
[Complete]

IT Network Refresh
(Throughout Campus)
[Bidding]

Date 12/05/2018

UPDATES ON CAMPUS PROJECTS – ANAHEIM (NOCE)

7th and 10th Floors Buildout

- ▶ Paul C Miller Construction Co. has completed construction work on the 7th Floor tenant improvements. The floor was ready for occupancy in September 2018.
- ▶ 10th Floor Rough-In installation of electrical, plumbing, and HVAC is in progress alongside drywall installation.
- ▶ Phase II of this project is expected to conclude in January 2019
- ▶ CBRE/Heery is working with Paul C. Miller in project commissioning efforts for the 7th and 10th Floor tenant improvements.

10TH FLOOR PROGRESS



Date 12/05/2018

34

Cypress

Fullerton

Anaheim

IT Network Refresh

UPDATES ON CAMPUS PROJECTS – ANAHEIM (NOCE)

5th Floor CTE and 2nd Floor Room 215

- ▶ Interlog Construction has completed construction work.
- ▶ Punch list items were completed at the end of September 2018.
- ▶ 5th Floor CTE Furniture, Fixture, and Equipment was installed in September 2018.
- ▶ This project has entered the close-out phase.

UPDATES ON CAMPUS PROJECTS – IT NETWORK REFRESH

IT Network Refresh at Cypress, Fullerton, and Anaheim Campuses

- ▶ Shandam Consulting started design on October 16th, 2017, with completion at the end of the first semester of 2018.
- ▶ The design process is not funded by Bond Measures X or J. However, the construction and implementation phase will be bond-funded by Measure J. Equipment will be owner furnished, owner installed.
- ▶ RFP responses were received in early November 2018 and are being evaluated.
- ▶ PlanNet Consulting was chosen as the Project Manager for the IT Network Refresh District-wide.

FINANCIAL REVIEW

- Capital Projects Update
- Estimated Project Budgets
- 90-Day Look Ahead Schedule

Date 12/05/2018

37

**North Orange County Community College District
Measure J Summary
October 31, 2018**

Bond Authorization:

Bond Authorization:	574,000,000	100.00%
Bonds Sold - Series A	100,000,000	17.42%
Available Principal Amount of Bonds:	474,000,000	82.58%

Bond Funding Sources

		Actual Received	Remaining Balance
Bond Authorization:	574,000,000	100,000,000	474,000,000
NET Estimated Interest Earnings:	4,000,000	2,385,562	1,614,438
Totals:	578,000,000	102,385,562	475,614,438

Cost Status:

Campus	Bond Funds	Bond Funds %	Other Funds	Total Budget	Total Project Funds %	Actual Expenses to Date 10/31/2018	Remaining Balance
Anaheim Campus	17,007,800	2.94%	8,832,917	25,840,717	3.75%	4,000,892	21,839,825
Cypress Campus	225,921,200	39.09%	45,663,000	271,584,200	39.44%	7,776,384	263,807,816
Fullerton Campus	311,126,400	53.83%	56,090,352	367,216,752	53.33%	2,521,730	364,695,022
District Expenses:							
Program Management	20,000,000	3.46%	-	20,000,000	2.90%	2,328,563	17,671,437
Bond Issuance Cost	3,544,600	0.61%	-	3,544,600	0.51%	557,977	2,986,623
Other Bond Expense	400,000	0.07%	-	400,000	0.06%	134,389	265,611
Totals	578,000,000	100.00%	110,586,269	688,586,269	100.00%	17,319,935	671,266,334

ESTIMATED PROJECT BUDGETS

CYPRESS CAMPUS

CURRENT PROJECTS

ESTIMATED PROJECT BUDGET—CYPRESS

CURRENT PROJECTS	Measure J Budget	Measure J Expenses	Balance
New Science, Engineering, and Mathematics Building	\$ 94,783,786	\$ 4,487,557	\$ 90,296,229
New Veterans' Resource Center & Student Activities Center Expansion	\$ 13,500,000	\$ 1,072,894	\$ 12,427,106
Veterans' Memorial Bridge and Tribute Garden	\$ 100,800	\$ -	\$ 100,800
Fine Arts Capital Improvement	\$ 16,764,338	\$ -	\$ 16,764,338
Update/Improve Infrastructure	\$ 14,957,096	\$ -	\$ 14,957,096
Update/Improve Infrastructure (New SEM)	\$ 2,447,588	\$ -	\$ 2,447,588
Update/Improve Infrastructure (IT)	\$ 6,000,000	\$ -	\$ 6,000,000
Update/Improve Infrastructure (VRC/SAC)	\$ 933,148		\$ 933,148
Planning (Non Project Specific)	\$ 520,000	\$ 138,482	\$ 381,518
Library-Learning Resource Center Expansion	\$ 15,000,000	\$ 38,665	\$ 14,961,335
Swing Space Projects	\$ 3,236,521	\$ 1,945,830	\$ 1,290,691
Mass Communications & Security Systems Upgrade	\$ 4,080,759	\$ -	\$ 4,080,759
Mass Communications & Security Systems Upgrade (New SEM)	\$ 327,006	\$ -	\$ 327,006
Mass Communications & Security Systems Upgrade (Safety Film)	\$ 145,774	\$ 92,956	\$ 52,818
Mass Communications & Security Systems Upgrade (Door Replacement)	\$ 37,500	\$ -	\$ 37,500
Mass Communications & Security Systems Upgrade (VRC/SAC)	\$ 57,461		\$ 57,461
Pool Restoration and Upgrade	\$ 4,876,000	\$ -	\$ 4,876,000
Gym I/Gym II Restoration and Restrooms	\$ 4,837,500	\$ -	\$ 4,837,500
Gateway Phase 1	\$ 5,810,000	\$ -	\$ 5,810,000
Under Piazza & Stairwell Restoration	\$ 1,963,800	\$ -	\$ 1,963,800
Tech I/Tech III Capital Improvements	\$ 27,645,342	\$ -	\$ 27,645,342
Athletic Field Realignment/Entry Revisions/Parking Lot Improvements	\$ 7,896,781	\$ -	\$ 7,896,781
SUB TOTAL	\$ 225,921,200	\$ 7,776,384	\$ 218,144,816

ESTIMATED PROJECT BUDGETS

FULLERTON CAMPUS
CURRENT PROJECTS

ESTIMATED PROJECT BUDGET—FULLERTON

CURRENT PROJECTS	Measure J Budget	Measure J Expenses	Balance
New Instructional Building	\$ 54,000,000	\$ 1,172,909	\$ 52,827,091
Renovate Buildings 300 & 500	\$ 20,482,000	\$ 475,097	\$ 20,006,903
New TES & Chilled Water Plant Expansion - Phase II	\$ 10,139,524	\$ -	\$ 10,139,524
Chiller Plant Expansion (New Instructional Bldg) Phase I	\$ 2,000,000	\$ 131,961	\$ 1,868,039
Update/Improve Infrastructure	\$ 23,006,862	\$ -	\$ 23,006,862
Update/Improve Infrastructure (IT)	\$ 8,000,000	\$ -	\$ 8,000,000
Update/Improve Infrastructure (Bldg 300-500 Sewer Line)	\$ 363,792		\$ 363,792
Planning (Non Project Specific)	\$ 595,000	\$ 209,761	\$ 385,239
New Parking Structure	\$ 28,937,954	\$ -	\$ 28,937,954
New M & O Building	\$ 3,744,828	\$ -	\$ 3,744,828
New Horticulture/Lab School/STEM Lab	\$ 23,817,288	\$ -	\$ 23,817,288
New Performing Arts Complex—Phase 1	\$ 16,133,000	\$ -	\$ 16,133,000
New Performing Arts Complex—Phase 2	\$ 12,409,153	\$ -	\$ 12,409,153
New Welcome Center & Lot C West	\$ 36,564,000	\$ -	\$ 36,564,000
Demolish Buildings 1100, 1300 and 2300	\$ 2,182,000	\$ -	\$ 2,182,000
Demolish Building 2000	\$ 1,108,000	\$ -	\$ 1,108,000
Renovate Building 600	\$ 6,739,100	\$ -	\$ 6,739,100
Renovate Building 840 Campus Services	\$ 7,878,400	\$ -	\$ 7,878,400
Renovate Health Center	\$ 1,328,800	\$ -	\$ 1,328,800
Renovate Building 1000 Fine Arts Gallery	\$ 23,468,500	\$ -	\$ 23,468,500
Renovate Faculty Lounge & Offices	\$ 6,212,250	\$ -	\$ 6,212,250
Renovate Wellness Center	\$ 2,534,400	\$ -	\$ 2,534,400
Landscape & Hardscape Improvements	\$ 3,840,000	\$ -	\$ 3,840,000
Renovate Building 3100	\$ 2,639,340	\$ -	\$ 2,639,340
Demolish Building 1901-04, 1956-60, 3000	\$ 1,333,000	\$ -	\$ 1,333,000
Parking Lot Improvements at Building 3000	\$ 1,999,500	\$ -	\$ 1,999,500
Renovate Building 2100	\$ 8,277,500	\$ -	\$ 8,277,500
Demolish Buildings 2200 & 3104	\$ 1,392,209	\$ -	\$ 1,392,209
SUB TOTAL	\$311,126,400	\$1,989,728	\$309,136,672

ESTIMATED PROJECT BUDGETS

ANAHEIM CAMPUS

CURRENT PROJECTS

ESTIMATED PROJECT BUDGET—ANAHEIM

CURRENT PROJECTS	Measure J Budget	Measure J Expenses	Balance
Reactivate 1st Floor Warehouse Areas for Storage	\$ 202,000	\$ -	\$ 202,000
7th and 10th Floors Buildout	\$ 2,151,359	\$ 235,734	\$ 1,915,625
5th Floor CTE & 2nd Floor Room 215	\$ 636,256	\$ 530,007	\$ 106,249
Repurpose Childcare	\$ 1,246,200	\$ -	\$ 1,246,200
Second Floor Tenant Improvements	\$ 813,000	\$ -	\$ 813,000
Outdoor Patio Remodel	\$ 1,382,500	\$ -	\$ 1,382,500
Fourth Floor Improvements	\$ 218,000	\$ -	\$ 218,000
Update/Improve Infrastructure	\$ 766,540	\$ -	\$ 766,540
Update/Improve Infrastructure (IT)	\$ 1,000,000	\$ -	\$ 1,000,000
Planning (Non Project Specific)	\$ 440,000	\$ 7,866	\$ 432,134
Student Lounge	\$ 222,200	\$ -	\$ 222,200
Upper Parking Lot Remodel	\$ 1,104,500	\$ -	\$ 1,104,500
Develop Interior and Exterior Signage	\$ 313,800	\$ -	\$ 313,800
Enliven Corridors/Develop Areas for Student Collaboration	\$ 888,800	\$ -	\$ 888,800
Develop South Entry Plaza	\$ 816,800	\$ -	\$ 816,800
Develop East Entry Plaza	\$ 413,200	\$ -	\$ 413,200
Remove Planters/Create Japanese Rock Garden	\$ 309,901	\$ -	\$ 309,901
Reconfigure Parking Lots	\$ 2,099,000	\$ -	\$ 2,099,000
Develop Drop-Off Plaza at Romneya Drive	\$ 1,069,000	\$ -	\$ 1,069,000
Develop Intersection at Romneya & Coronet	\$ 914,744	\$ -	\$ 914,744
SUB TOTAL	\$ 17,007,800	\$ 773,607	\$ 16,234,193

ESTIMATED PROJECT BUDGETS

DISTRICT

ESTIMATED PROJECT BUDGET—DISTRICT

DISTRICT WDE EXPENSE	Measure J Budget	Measure J Expenses	Balance
Program Management Fees	\$ 20,000,000	\$ 2,328,563	\$ 17,671,437
Bond Issuance Cost	\$ 3,544,600	\$ 557,977	\$ 2,986,623
Other	\$ 400,000	\$ 134,389	\$ 265,611
SUB TOTAL	\$ 23,944,600	\$ 3,020,929	\$ 20,923,671

NORTH ORANGE COMMUNITY COLLEGE DISTRICT
CYPRESS - FULLERTON - ANAHEIM (NOCE)
90-DAY LOOK AHEAD SCHEDULE
 (11-01-18 TO 01-31-19)

	November				December				January					Comments
	6	13	20	27	4	11	18	25	1	8	15	22	29	
GENERAL														
NOCCCD Board Meetings														
COC Meetings														December 5th
Bond Program Management Team Mtgs.														November 13th, December 12th
Anaheim - Campus Coordination Meeting														No Meetings Scheduled
Cypress - Campus Coordination Meeting														No Meetings Scheduled
Fullerton - Campus Coordination Meeting														November 13th, December 12th
PLANNING														
DESIGN PHASE														
FULLERTON														
Working Drawings for Renovate Buildings 300 & 500														In Progress - Completion Anticipated in Jan. 2019
Construction Documents for Renovate Buildings 300 & 500														In Progress - Completion Anticipated in Jan. 2019
New Instructional Building Design Development														In Progress - Completion on Nov. 30, 2018
New Instructional Building Construction Documents														Anticipated Start in December 2018
Phase I Central Plant Expansion Schematic Design														Target completion end of Oct. 2018
Phase I Central Plant Expansion Design Development														Anticipated Start Upon Completion of Schematics
DSA PHASE & AGENCY REVIEW														
CYPRESS														
Review of Construction Documents for New SEM														Approval on Oct. 19, 2018 - Complete
Review of Fire Sprinklers Addendum for New VRC/SAC														Submittal of Addendum in late September
FULLERTON														
Review of Buildings 300 & 500 Construction Documents														Anticipated Submittal to DSA in January 2019
Review of Sewer Line Replacement for Buildings 300 & 500 *														Anticipated City of Fullerton Sign-Off on Dec. 1, 2018
PRE-CONSTRUCTION PHASE														
CYPRESS														
Pre-Qualification for Trade Contractors New SEM & VRC/SAC														Completion Slated for November 2018
Bidding for Trade Contractors New SEM & VRC/SAC														To Start Upon Completion of Pre-Qualification
GMP Negotiations for New SEM & VRC/SAC														To Start Upon Completion of Contractors Bidding
INFORMATION TECHNOLOGY NETWORK REFRESH														
RFP for Network Refresh Design Implementation *														Responses due on Nov. 6, 2018
Vendor Presentations Network Refresh Design *														Anticipated completion by end of November 2018
Vendor Selection Network Refresh Design *														To be completed by Jan. 22, 2019
CONSTRUCTION PHASE														
CYPRESS														
Lots 4 & 5 Construction														Complete
Safety Film and Door Replacement Projects														In Progress - Completion in November 2018
ANAHEIM (NOCE)														
7th and 10th Floors Buildout Phase II Construction														In Progress - Completion in January 2019
CLOSE-OUT PHASE														
CYPRESS														
Gym II Reconfiguration for SAC Swing Space Close-Out														In Progress
Lots 4 & 5 Parking Lot Realignment														In Progress
ANAHEIM (NOCE)														
5th & 2nd Floors Move Management & Close-Out														In Progress

* Non-Measure J expenditure activities

Date 12/05/2018