



Capital Projects Report

to the

Citizens Oversight Committee

June 2018

MAAS

Intentionally Left Blank

TABLE OF CONTENTS

Projects in Feasibility, Planning, Programming, Design, and Construction

CAMPUS SITE PLANS

<i>Cypress Campus</i>	2
<i>Fullerton Campus</i>	3
<i>Anaheim Campus</i>	4

Project Status Report

Cypress Campus

<i>New Science, Engineering, and Mathematics Building</i>	7
<i>New Veterans' Resource Center, Student Activities Center Expansion</i>	8
<i>Veterans' Memorial Bridge and Tribute Garden</i>	9
<i>Swing Space Projects</i>	10
<i>Update / Improve Infrastructure</i>	11-12
<i>Mass Communication and Security Systems Upgrade</i>	13-15
<i>Updates on Campus Projects - Cypress College</i>	16-19

Fullerton Campus

<i>New Instructional Building</i>	21
<i>Renovate Buildings 300 & 500</i>	22
<i>New TES & Chilled Water Plant Expansion</i>	23
<i>New Parking Structure</i>	24
<i>New Maintenance & Operations Building</i>	25
<i>Update / Improve Infrastructure</i>	26-27
<i>Updates on Campus Projects - Fullerton College</i>	28-29

Anaheim Campus

<i>7th and 10th Floors Buildout</i>	31
<i>5th Floor CTE Laboratory and 2nd Floor Room 215</i>	32
<i>Update / Improve Infrastructure</i>	33
<i>Updates on Campus Projects - Anaheim Campus</i>	34

Financial Review

CAPITAL PROJECT UPDATES

<i>Measure J</i>	37
------------------------	----

ESTIMATED PROJECT BUDGETS

<i>Cypress Campus</i>	38
<i>Fullerton Campus</i>	39
<i>Anaheim Campus</i>	40
<i>District</i>	41

90-DAY LOOK AHEAD SCHEDULE

<i>Cypress/Fullerton/Anaheim</i>	42
--	----

Intentionally Left Blank

PROJECTS IN FEASIBILITY, PLANNING, PROGRAMMING, AND DESIGN

- Campus Site Plans
- Project Status Reports



SITE PLAN — CYPRESS CAMPUS

FEASIBILITY, PLANNING, PROGRAMMING & DESIGN

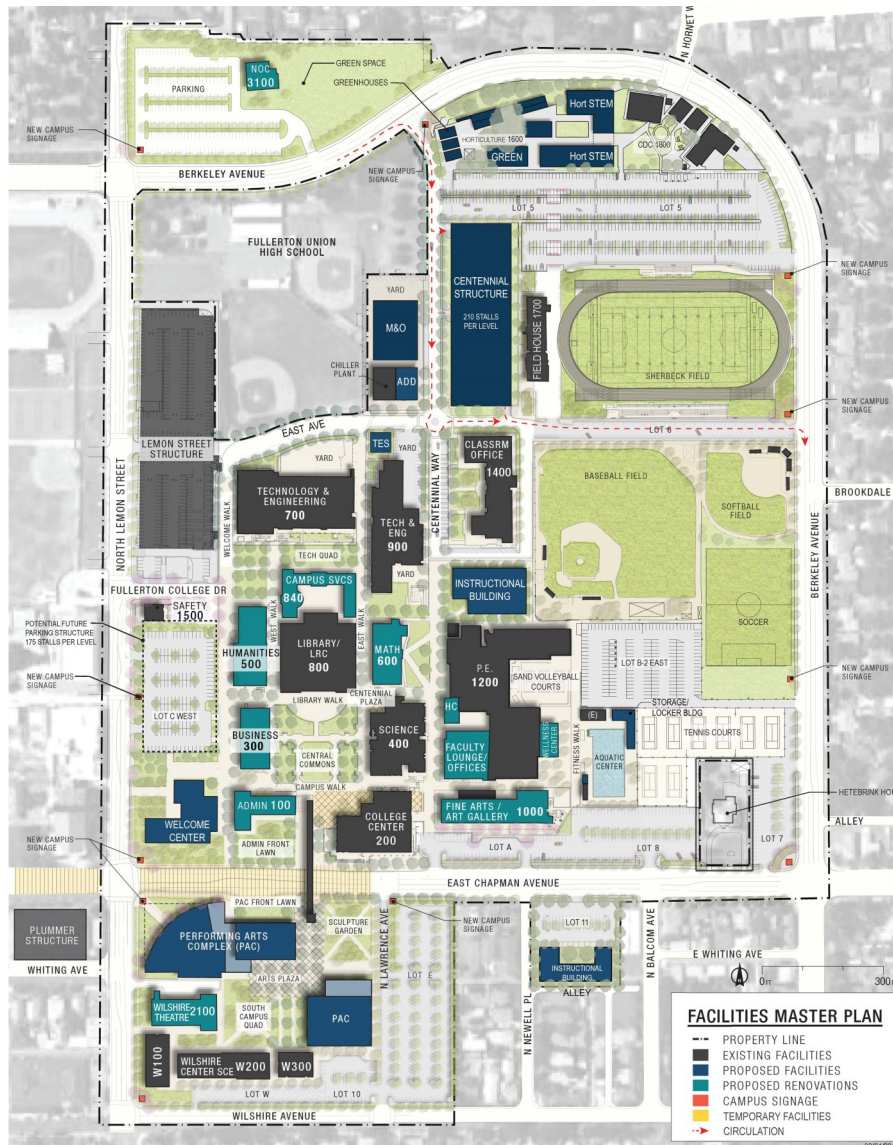
- New Science, Engineering and Mathematics Building
- New Veterans' Resource Center & Student Activities Center Expansion
- Veterans' Memorial Bridge and Tribute Garden
- Swing Space Projects
- Library-Learning Resource Center Expansion (TBD)
- Update / Improve Infrastructure
- Mass Communication and Security Systems Upgrade
- ADA Transition Planning



SITE PLAN — FULLERTON CAMPUS

FEASIBILITY, PLANNING, PROGRAMMING & DESIGN

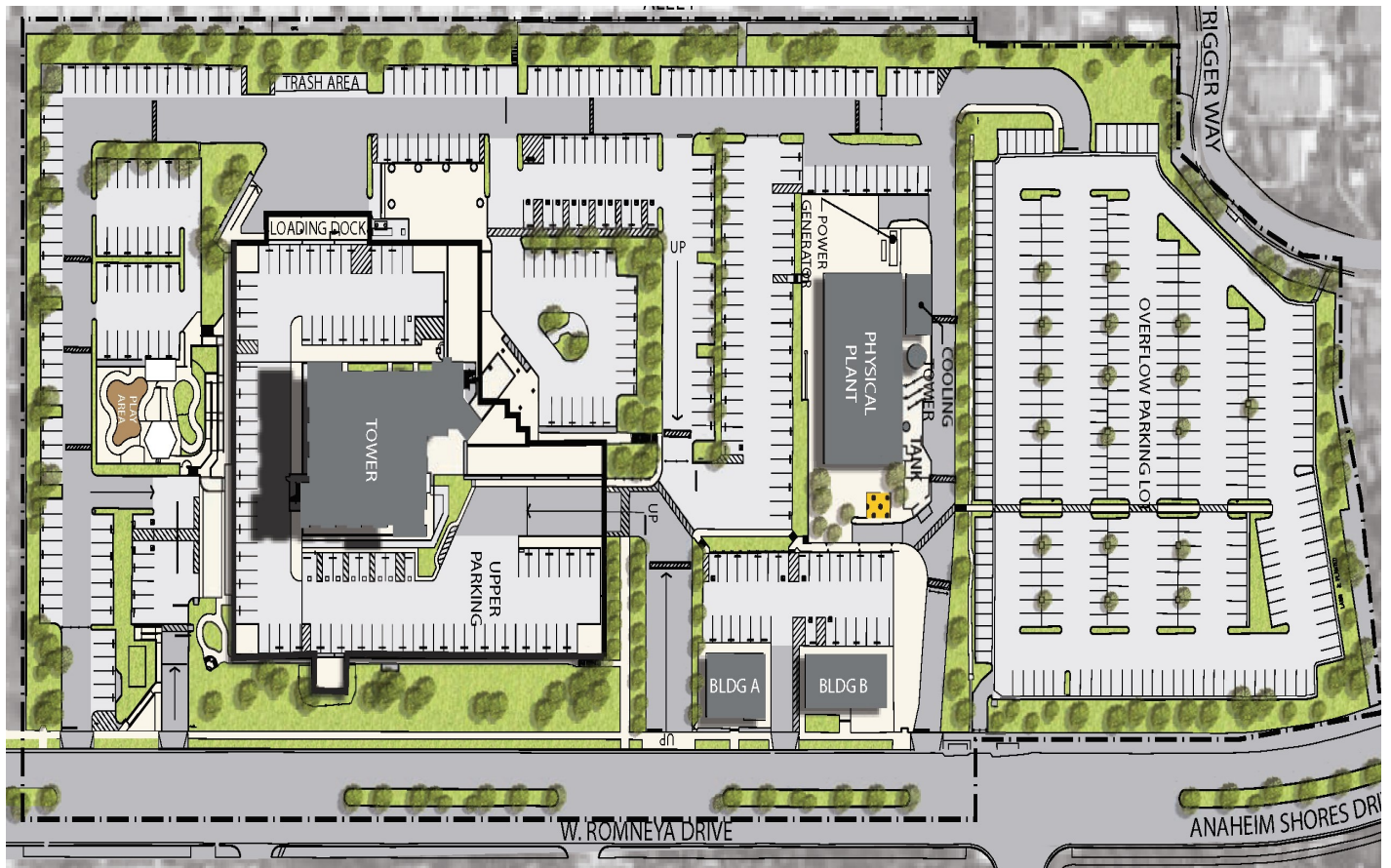
- Renovate Buildings 300 & 500
- New Instructional Building
- New TES & Chilled Water Plant Expansion
- New Parking Structure
- New Maintenance & Operations Building
- Update / Improve Infrastructure
- ADA Transition Planning



SITE PLAN — ANAHEIM CAMPUS

FEASIBILITY, PLANNING, PROGRAMMING & DESIGN

- Anaheim 7th & 10th Floors Buildout
- 5th Floor CTE Laboratory and 2nd Floor Counseling Office Room 215
- All Project Scopes, Budgets, Schedules and Priorities under review. Program Requirements in Early Planning Phases.
 - 1st Floor Upgrades
 - Parking Deck Replacement (TBD)
- Update / Improve Infrastructure
- ADA Transition Planning



Intentionally Left Blank

AERIAL VIEW — CYPRESS CAMPUS

CAMPUS PROJECTS



Veterans' Memorial Bridge
& Tribute Garden
[DSA Review]



New Science, Engineering
and Mathematics Building
[DSA Review]



Swing Space Projects
Gym II Space for VRC/SAC
[Construction]

Swing Space Projects
Parking Lot #5
[Construction]

IT Network Refresh
(Throughout Campus)
[Design]



New Veterans' Resource Center &
Student Activities Center Expansion
[DSA Review]

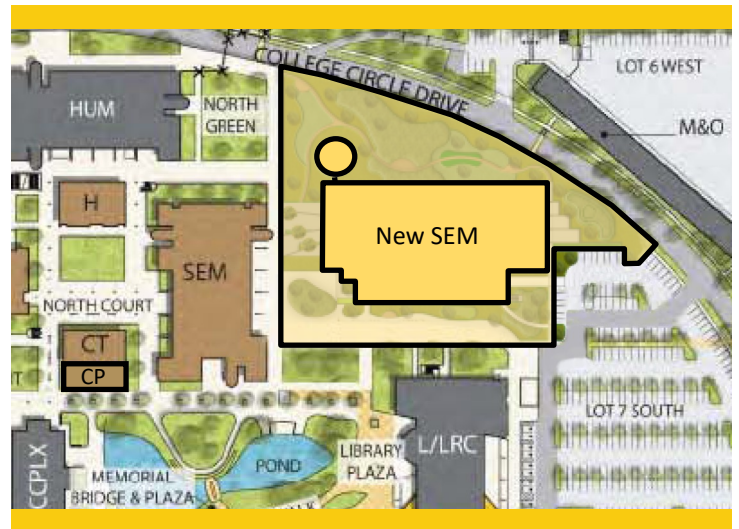


PROJECT STATUS REPORT — CYPRESS CAMPUS

NEW SCIENCE, ENGINEERING, AND MATHEMATICS BUILDING

DSA REVIEW

Address	9200 Valley View St. Cypress, CA 90630
Project Manager	Emily Day / Ryan Lippmann Cypress College
Architect	LPA, Inc.
Construction Manager at Risk	Sundt
DSA Application A#	04-117024



Project Overview

High priority project to increase the efficiency of the square footage and accommodation of services for Science, Engineering, and Mathematics programs with 21 lecture and 23 lab classrooms, an Immersive Digital Classroom, and a Crematorium for the Mortuary Science Program.

- Total Project Budget\$97,783,786
- Funding SourceMeasure J & Campus Funds
 - Measure J.....\$94,783,786
 - Campus Funds (Estimated FF&Es)\$3,000,000
- Project Gross Square Footage.....106,023 GSF
- Estimated Construction Start.....Spring 2019
- Targeted CompletionSpring 2021

Note: Total Estimated Project Cost at 50% Construction Documents Design Stage

* New Science, Engineering and Mathematics Building.....	\$ 97,783,786
* New SEM Infrastructure Project (Page 17).....	\$ 2,447,588
* New SEM Mass Communication & Security Systems Project (Page 18)	\$ 327,006
Total Estimated Project Cost.....	\$100,558,380



PROJECT STATUS REPORT — CYPRESS CAMPUS

NEW VETERANS' RESOURCE CENTER & STUDENT ACTIVITIES CENTER EXPANSION

DSA REVIEW

Address	9200 Valley View St. Cypress, CA 90630
Project Manager	Emily Day / Ryan Lippmann Cypress College
Architect	LPA, Inc.
Construction Manager at Risk	Sundt
DSA Application A#	04-117023



Project Overview

High priority project to increase the square footage and provide new accommodation of services for the Veterans' Resource Center (VRC)/Student Activities Center (SAC) Expansion.

- Total Project Budget\$13,500,000
- Funding SourceMeasure J
- Buildings Gross Square Footage12,119 GSF
 - Veterans' Resource Center (VRC).....4,330 GSF
 - Student Activities Center (SAC)7,789 GSF
- VRC Site Plaza46,835 SF
- Estimated Construction Start.....Spring 2019
- Targeted CompletionFall 2020



PROJECT STATUS REPORT — CYPRESS CAMPUS

VETERANS' MEMORIAL BRIDGE AND TRIBUTE GARDEN

DSA REVIEW

Address	9200 Valley View St. Cypress, CA 90630
Project Manager	Emily Day / Ryan Lippmann Cypress College
Architect	LPA, Inc.
Construction Manager at Risk	Sundt
DSA Application A#	04-117023



Project Overview

Construction of a Veterans' Memorial Bridge (VMB), Tribute Garden, and site improvements to adjacent areas.

- Total Project Budget\$1,600,800
- Funding SourceMeasure J & Local
 - Measure J\$100,800
 - Local Funds.....\$1,500,000
- Project Gross Square Footage.....16,357 GSF
- Estimated Construction Start.....Spring 2019
- Targeted CompletionFall 2020



PROJECT STATUS REPORT — CYPRESS CAMPUS

SWING SPACE PROJECTS

VARIOUS STAGES

Address	9200 Valley View St. Cypress, CA 90630
Project Manager	Albert Miranda Cypress College
Architect	(See Updates on Projects)
Project Delivery Method	(See Updates on Projects)



Project Overview

Currently, there are three different ventures that are part of the Swing Space Projects. Roof repairs will be performed using Schedule Maintenance Funds at the existing SEM Building, which will be occupied as a swing space upon the completion of the New SEM building. Available space within Gym II will accommodate the Student Activities Center (SAC) activities during construction of the New VRC. Parking Lot 5 South will be reconfigured aiming to increase parking capacity 385 spaces to compensate for the loss of 200 stalls resulting from the construction site for the New SEM Building.

- Total Project Budget\$3,236,521
- Funding SourceMeasure J
 - Parking Lot #5\$2,300,000 (Estimated)
 - VRC / SAC Swing Space to Gym II.....\$200,000 (Estimated)
- Estimated Construction Start
 - Parking Lot #5June 2018
 - VRC / SAC Swing Space to Gym II.....May 2018
- Targeted Completion
 - Parking Lot #5August 2018
 - VRC / SAC Swing Space to Gym II.....August 2018



PROJECT STATUS REPORT — CYPRESS CAMPUS

UPDATE/IMPROVE INFRASTRUCTURE

VARIOUS STAGES

Address	9200 Valley View St. Cypress, CA 90630	Total Project Budget	\$24,337,832
		Total Budget Allocated	\$8,447,588
Number of Projects	2	Funding Source	Measure J

General Overview

Projects to address infrastructure improvements or upgrades throughout the Campus. Funds are allocated to projects as needs are identified.

IT Network Refresh Project Overview

DESIGN

Assessment of Campus data network infrastructure and identify necessary upgrades and changes that will enable supporting future campus needs; specifically addressing wired, wireless, voice, and video networks. Design of a new network will account for the District’s needs specific to logical infrastructure for the next 10 years. Physical infrastructure will also account for the District’s needs for the next 20 years. The scope includes replacing network core switches, providing a more responsive support structure, preparing for cloud computing, and adaptation of voice over IP systems across the District.

- Project Budget\$6,000,000
- Funding SourceMeasure J & Capital Outlay Funds
- Project Delivery MethodTBD
- Architect.....Shandam Consulting
- Estimated Construction Start.....TBD
- Targeted CompletionTBD



PROJECT STATUS REPORT — CYPRESS CAMPUS

UPDATE/IMPROVE INFRASTRUCTURE (Continued)

VARIOUS STAGES

Address	9200 Valley View St. Cypress, CA 90630	Total Project Budget	\$24,337,832
		Total Budget Allocated	\$8,447,588
Number of Projects	2	Funding Source	Measure J

New Science, Engineering, and Mathematics Building Infrastructure

Project Overview

DSA REVIEW

Improvements to Campus power and sewer infrastructure to connect to the future New SEM Building. The scope of work includes storm water drain relocation, water supply reconfiguration, sanitary sewer replacement, gas and mechanical utilities rearrangement, site lighting, and electrical duct bank relocation.

- Project Budget\$2,447.588
- Funding SourceMeasure J
- Project Delivery Method.....Construction Manager at Risk (CMAR)
- Architect.....LPA, Inc.
- Construction Manager at Risk.....Sundt
- Project ManagerEmily Day / Ryan Lippmann
- Estimated Construction Start.....Spring 2019
- Targeted CompletionSpring 2021



PROJECT STATUS REPORT — CYPRESS CAMPUS

MASS COMMUNICATION & SECURITY SYSTEMS UPGRADE

VARIOUS STAGES

Address	9200 Valley View St. Cypress, CA 90630	Total Project Budget	\$4,648,500
		Total Budget Allocated	\$510,280
Number of Projects	3	Funding Source	Measure J

General Overview

Projects to address fire alarm, mass communication, security, access control, and lockdown systems throughout the Campus. Funds are allocated to projects as needs are identified.

New Science, Engineering, and Mathematics Building, Mass Communication & Security Systems Project Overview

DSA REVIEW

Installation of bullet resistant glazing and improvements to Campus fire alarm and security system to connect to the future New SEM Building.

- Project Budget\$327,006
- Funding SourceMeasure J
- Project Delivery Method.....Construction Manager at Risk (CMAR)
- Architect.....LPA, Inc.
- Construction Manager at Risk.....Sundt
- Project ManagerEmely Day / Ryan Lippmann
- Estimated Construction Start.....Spring 2019
- Targeted CompletionSpring 2021



PROJECT STATUS REPORT — CYPRESS CAMPUS

MASS COMMUNICATION & SECURITY SYSTEMS UPGRADE

VARIOUS STAGES

Address	9200 Valley View St. Cypress, CA 90630	Total Project Budget	\$4,648,500
		Total Budget Allocated	\$510,280
Number of Projects	3	Funding Source	Measure J

Safety Film Project Overview

PLANNING

Installation of safety film at 6 buildings on campus. Among them are Building 3 SEM, Building 7 Gym I, Building 8 Student Activities, Building 11 Gym II, Building 12 Tech Ed II, and Building 20 Bookstore.

- Project Budget\$145,774
- Funding SourceMeasure J
- Project Delivery Method.....TBD
- Architect.....TBD
- Project ManagerEmily Day / Ryan Lippmann
- Estimated Construction Start.....April 2018
- Targeted CompletionAugust 2018



PROJECT STATUS REPORT — CYPRESS CAMPUS

MASS COMMUNICATION & SECURITY SYSTEMS UPGRADE

VARIOUS STAGES

Address	9200 Valley View St. Cypress, CA 90630	Total Project Budget	\$4,648,500
		Total Budget Allocated	\$510,280
Number of Projects	3	Funding Source	Measure J

Door Replacement Project Overview

PLANNING

Installation of modified entry doors at Building 9 Business Education.

- Project Budget\$37,500
- Funding SourceMeasure J
- Project Delivery MethodTBD
- Architect.....TBD
- Project ManagerEmily Day / Ryan Lippmann
- Estimated Construction Start.....April 2018
- Targeted CompletionAugust 2018



PROJECT STATUS REPORT — CYPRESS CAMPUS

UPDATES ON CAMPUS PROJECTS - CYPRESS COLLEGE

New Science, Engineering, and Mathematics Building

- Looking at the total cost of the New SEM Building, the original estimate prior to Schematic Design was \$89,088,967. The current 50% Construction Documents cost estimate is \$100,558,380, an increase of \$11,469,413 from the earlier estimate. Following is a summary of the increases:

Escalation	\$ 3,910,737
Foundation Work Increases*	\$ 3,778,132
Infrastructure Outside Footprint	\$ 2,447,588
Mass Communication / Safety Upgrades	\$ 327,006
DSA Rate Increase; change in building square footage*	\$ 1,005,950
<hr/>	
Total:	\$11,469,413

*From feasibility analysis to 50% Construction Documents

- Budget for the Mass Communication/Safety Upgrades and the Infrastructure work (\$2,774,594) are in other line item budgets in the Measure J program.
- Cypress College has set aside \$3,000,000 in funds for the building's furniture, fixtures, and equipment (FF&E).
- The Construction Documents design phase for the New Science, Engineering, and Mathematics Building is entering its final stages. LPA and Sundt completed the 95% Construction Documents update and submitted drawings and specifications to DSA for review on March 14th, 2018 as scheduled. DSA has also provided confirmation of receipt of complete documents and will proceed with the review. Approval is anticipated to be obtained by September 2018.
- The 95% Construction Documents submittal was received by the Campus and District at the end of April. By mid-May, comments were to be incorporated into the project drawings and submitted to DSA during the back-check period.
- On April 24th, 2018 the Board of Trustees approved a contract amendment to LPA Architecture for the deduction of Furniture Design, Management, and Coordination services fee. Added services for the reconfiguration of classroom wing, office suite, and lab redesign were also approved for a revised contract amount of \$4,581,345.
- Dovetail Decision Consultants is currently working with campus project team in FF&E space plans. On April 24th, 2018 the Board of Trustees approved additional services to include final specifications, vendor coordination, and implementation of science equipment for typical and specialty FF&E.
- Construction Manager at Risk - Sundt is continuing collaboration with LPA and the Campus during Pre-Construction phase including logistics coordination and cost estimates.



PROJECT STATUS REPORT — CYPRESS CAMPUS

UPDATES ON CAMPUS PROJECTS - CYPRESS COLLEGE (Continued)

New Veterans' Resource Center & Students Activities Center Expansion

- The 50% Construction Documents cost estimate submitted by Sundt is within the construction budget. Campus is working with LPA and Sundt to prevent cost overruns within their control.
- The Construction Documents design phase for the New Veterans' Resource Center (VRC) and Student Activities Center (SAC) is also entering its final stages, alongside the New SEM. The 95% Construction Documents submittal was received by the Campus and District by the end of April. By mid-May, comments were incorporated into the project drawings and submitted to DSA during the back-check period. The Construction Documents include plans and specifications for the Veterans' Memorial Bridge and Tribute Gardens.
- The project was submitted to DSA for review on March 14th, 2018. Approval of construction documents is anticipated in September 2018.
- Discussions on ways to remediate Piazza water leaks affecting the SAC are ongoing. The project will likely be achieved separately from the VRC/SAC, and prior to the construction start. The Campus is working with a specialized roofing consultant to gather information on the scope of the project and expected timeline for repairs.
- Design options will be considered to address currently insufficient fire hydrant water flows to accommodate for the New VRC/SAC.
- On April 24th, 2018 the Board of Trustees approved a contract amendment to LPA Architecture for the deduction of Furniture Design, Management, and Coordination services fee. Added services for a consultant to provide design and documentation services for the renovation and restructuring of the existing Cypress College Pond were also approved for a revised contract amount of \$1,002,375.
- Dovetail Decision Consultants is currently working with campus project team in FF&E space plans. On April 24th, 2018, the Board of Trustees approved additional services to include vendor coordination and implementation of fixtures, equipment, and typical and specialty furniture items.
- Construction Manager at Risk - Sundt is continuing collaboration with LPA and the Campus during Pre-Construction phase including logistics coordination and cost estimates.

Veterans' Memorial Bridge and Tribute Garden

- The 50% Construction Documents cost estimate submitted by Sundt is within the construction budget. Campus is working with LPA and Sundt to prevent cost overruns within their control.
- The Construction Documents design phase for the Veterans' Memorial Bridge and Tribute Gardens is also entering its final stages, as part of the New VRC/SAC project submittal. The 95% Construction Documents submittal was received by the Campus and District by the end of April. By mid-May, comments were incorporated into the project drawings and submitted to DSA during the back-check period.
- Construction Manager at Risk - Sundt is continuing collaboration with LPA and the Campus during Pre-Construction phase including logistics coordination and cost estimates.



PROJECT STATUS REPORT — CYPRESS CAMPUS

UPDATES ON CAMPUS PROJECTS - CYPRESS COLLEGE (Continued)

Swing Space Projects

- Parking Lot #5 Expansion - Westberg & White Inc. completed design phase in October 2017. DSA approved the Construction Drawings in December 2017. Wreck Age completed demolition activities from January 22, to February 22, 2018. Bids were received in response to the first RFB for the projects, but all responses were rejected. A second posting of the RFB to District's list of pre-qualified general contractors was completed on April 10th, 2018. GB Construction, Inc. dba Golden Bear Construction was selected as the lowest responsible and responsive bidder with a base bid for \$1,399,549.30, and an allowance for \$125,000. The General Contractor selection was presented to the Board of Trustees on April 24th, 2018 and approved. Work will be starting in earnest during the upcoming breaks to minimize impact on parking availability.
- Additional purchase orders have been issued for the following:

Vendor	Purchase Order Amount	Scope of work
Sasco	\$27,230.00	Electrical Work
Sasco	\$11,410.00	Voice and Data Work
Integrated Interior	\$7,800.00	Interior building modifications
King's Moving Services	\$5,944.00	Moving services
Corporate Business Interiors (CBI)	\$7,800.00	Furniture disassembly and reassembly
COBAC	\$1,447.99	Window Treatments

- Existing SEM building Roof Replacement - Project will be addressed alongside other scheduled maintenance projects. It will not be funded by Measure J.
- Veterans' Resource Center / Student Activities Center move to Swing Space at Gym II - Work started on 6/5/17. Estimated construction cost is \$150,000 and moving costs are \$50,000. A purchase order for the office reconfiguration at the Gym II swing space was issued to Integrated Interiors on 5/31/17. Space Planning consultant from CBI has produced the first draft of the furniture layout for swing space move. The end users will be reviewing and making comments as we finalize that portion of the work. Personnel is intended to take place during the summer break of 2018.



PROJECT STATUS REPORT — CYPRESS CAMPUS

UPDATES ON CAMPUS PROJECTS - CYPRESS COLLEGE (Continued)

Update / Improve Infrastructure

IT Network Refresh Project

- Shandam Consulting started design on October 16th, 2017, with completion targeted by the end of first semester 2018.
- The design process is not funded by Bond Measures X or J. However, the construction and implementation phase will be bond-funded by Measure J. Equipment will be owner furnished, owner installed.

New Science, Engineering, and Mathematics Building Infrastructure

- This project was activated in April 2017. Scope of work is part of New Science, Engineering, and Mathematics building design documents.
- Construction Documents were submitted to DSA for review on March 14th, 2018 as part of the New SEM Construction Documents and Specifications package. Approval of construction documents is anticipated in September 2018.

Mass Communication and Security Systems Upgrade

New Science, Engineering, and Mathematics Building, Mass Communication & Security System Project

- This project was activated in April 2017. Scope of work is part of New Science, Engineering, and Mathematics building design documents.
- Mass communication system will be tied in to the fire alarm. The existing fire alarm is tied in to Gym I, Co-Gen, and existing SAC. Scope of work will include upgrading the existing fire alarm to separate the renovated SAC and new VRC to a stand-alone fire alarm panel.
- Construction Documents were submitted to DSA for review on March 14th, 2018 as part of the New SEM Construction Documents and Specifications package. Approval of construction documents is anticipated in September 2018.

Safety Film Project

- This project was activated in April 2018. Scope of work is includes the installation of safety film at the store front on 6 buildings on campus.
- Project schedule is under development.
- Cost for project is estimated at \$145,774.

Door Replacement Project

- This project was activated in April 2018. Scope of work is includes the installation modified entry doors at Building 9 Business Education.
- Project schedule is under development.
- Cost for project is estimated at \$37,500.



AERIAL VIEW — FULLERTON CAMPUS

CAMPUS PROJECTS

IT Network Refresh
(Throughout Campus)
[Design]

Update / Improve
Infrastructure - Sewer Line
Replacement to Buildings
300 & 500
[Planning]

New TES & Chilled Water
Plant Expansion
[Phase I - Concept /
Planning]

New Maintenance & Operations
Building
[Pre-Planning]

New Parking Structure
[Pre-Planning]



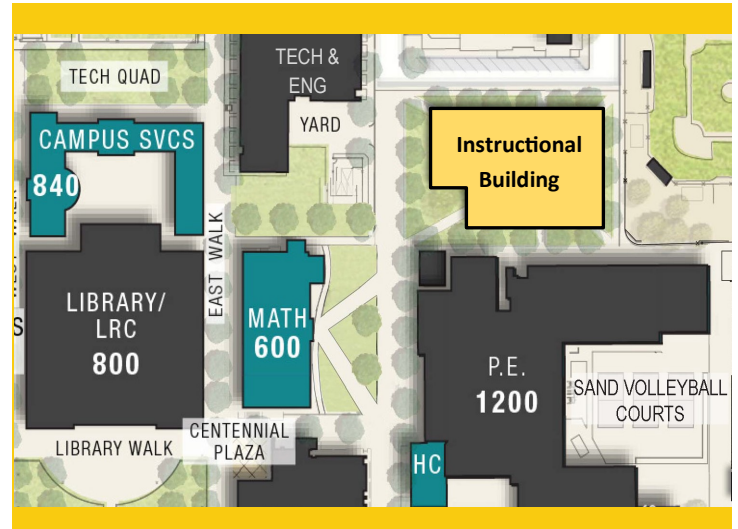
The Final Program EIR was approved by the Board of Trustees on December 12, 2017. Please note that the Sherbeck Field Improvements project, which was originally included in the Initial Study and Notice of Preparation for this Program EIR, will be assessed in a separate California Environmental Quality Act (CEQA) document. These items are not funded by Measure J.



PROJECT STATUS REPORT — FULLERTON CAMPUS

NEW INSTRUCTIONAL BUILDING CONCEPT / PROGRAMMING

Address	321 E. Chapman Ave. Fullerton, CA 92832
Project Manager	Oscar Saghieh Fullerton College
Design-Builder	BNBuilders, Inc, & Roesling Nakamura Terada Architects, Inc.
Project Delivery Method	Progressive Design- Build



Project Overview

The building will help meet campus growth needs with the goal of consolidating an instructional division into a single building. The building will accommodate more than 40 classrooms and the division office services including staff offices. Scope of work for this projects includes the expansion of the Chilled Water plant. Refer to page 23 of this report for information.

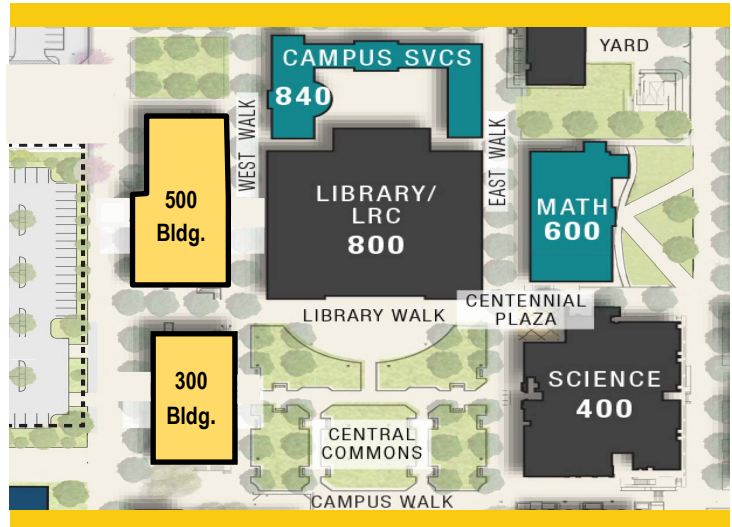
- Total Project Budget\$54,000,000
- Funding SourceMeasure J
- Project Gross Square Footage73,615 GSF
- Estimated Construction Start.....Winter 2019
- Targeted CompletionSummer 2021



PROJECT STATUS REPORT — FULLERTON CAMPUS

RENOVATE BUILDINGS 300 & 500 DESIGN DEVELOPMENT

Address	321 E. Chapman Ave. Fullerton, CA 92832
Project Manager	Oscar Saghieh Fullerton College
Architect	R2A Architecture
Project Delivery Method	Design-Bid-Build



Project Overview

Total renovation of Buildings 300 and 500, including historic consideration of Building 300. The renovated buildings will contain general classrooms, CIS laboratories, ACT laboratories, photography laboratories, Dean and faculty offices, shared laboratories, and a lecture hall.

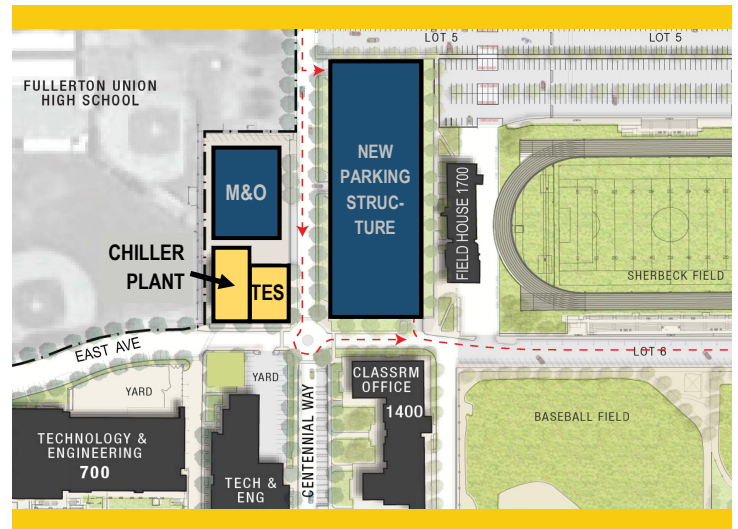
- Total Project Budget\$35,882,000
- Funding SourceMeasure J & State Capital Outlay
 - Measure J\$20,482,000
 - State Capital Outlay Funds\$15,400,000
- Project Gross Square Footage.....55,451 GSF
- Estimated Construction Start.....Summer 2021
- Targeted CompletionFall 2023



PROJECT STATUS REPORT — FULLERTON CAMPUS

NEW TES & CHILLED WATER PLANT EXPANSION PHASES I & II CONCEPT / PROGRAMMING

Address	321 E. Chapman Ave. Fullerton, CA 92832
Project Manager	Oscar Saghieh Fullerton College
Design-Builder (Phase I)	BNBuilders, Inc, & Roesling Nakamura Terada Architects, Inc.
Project Delivery Method (Phase I)	Progressive Design-Build



Project Overview

Expansion of Chilled Water Plant to accommodate planned new facilities and renovations along with new Thermal Energy Storage. Phase I includes the expansion of the existing building to house the addition of a 600-ton high-efficiency water chiller, and future additions in subsequent project phases. Phase II scope of work will be revisited as Phase I construction nears completion.

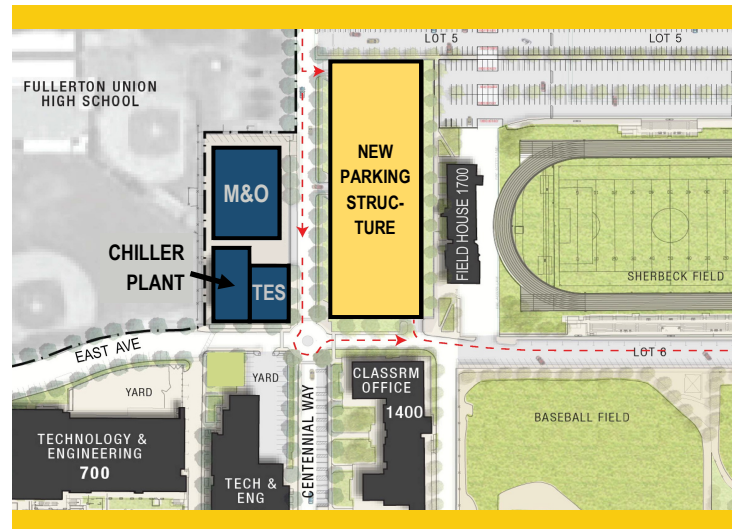
- Total Project Budget\$12,139,524
 - Phase I.....\$2,000,000
 - Phase II.....\$10,139,524
- Funding SourceMeasure J
- Project Gross Square Footage.....TBD
- Estimated Construction Start for Phase I.....Winter 2019
- Targeted Completion for Phase ISummer 2021



PROJECT STATUS REPORT — FULLERTON CAMPUS

NEW PARKING STRUCTURE PRE-PLANNING

Address	321 E. Chapman Ave. Fullerton, CA 92832
Project Manager	Oscar Saghieh Fullerton College
Architect	TBD
Project Delivery Method	TBD



Project Overview

New parking structure building to accommodate the need for additional parking for staff and students, with 840 spaces not exceeding 4 Levels.

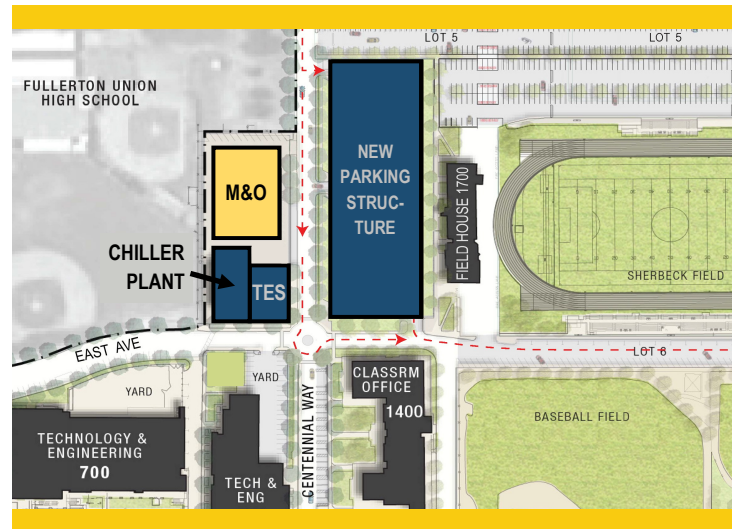
- Total Project Budget\$28,937,954
- Funding SourceMeasure J
- Project Gross Square Footage.....260,000 GSF
- Estimated Construction Start.....Winter 2023
- Targeted CompletionSummer 2024



PROJECT STATUS REPORT — FULLERTON CAMPUS

NEW MAINTENANCE & OPERATION BUILDING PRE-PLANNING

Address	321 E. Chapman Ave. Fullerton, CA 92832
Project Manager	Oscar Saghieh Fullerton College
Architect	TBD
Project Delivery Method	TBD



Project Overview

The new Maintenance and Operations building will centralize all M & O services into a single building located on the main campus. The building will include trade-specific workshops for maintenance, grounds, facilities, custodial personnel while improving response time and efficiencies by locating the building on the main campus adjacent to the central plant.

- Total Project Budget\$11,458,394
- Funding SourceMeasure J & Local Funds
 - Measure J\$3,744,828
 - Local Funds.....\$7,713,566
- Project Gross Square Footage.....22,300 GSF
- Estimated Construction Start.....Winter 2023
- Targeted CompletionSummer 2024



PROJECT STATUS REPORT — FULLERTON CAMPUS

UPDATE/IMPROVE INFRASTRUCTURE

VARIOUS STAGES

Address	321 E. Chapman Ave. Fullerton, CA 92832	Total Project Budget	\$31,370,654
		Total Budget Allocated	\$8,000,000
Number of Projects	2	Funding Source	Measure J

General Overview

Projects to address infrastructure improvements or upgrades throughout the Campus. Funds are allocated to projects as needs are identified.

IT Network Refresh Project Overview

DESIGN

Assessment of Campus data network infrastructure, identify necessary upgrades, and changes that will enable supporting future campus needs; specifically addressing wired, wireless, voice, and video networks. Design of a new network will account for the District's needs specific to logical infrastructure for the next 10 years. Physical infrastructure will also account for the District's needs for the next 20 years. The scope includes replacing network core switches, provide a more responsive support structure, preparing for cloud computing, and adaptation of voice over IP systems across the District.

- Project Budget\$8,000,000
- Funding SourceMeasure J & Capital Outlay Funds
- Project Delivery MethodTBD
- Architect.....Shandam Consulting
- Estimated Construction Start.....TBD
- Targeted CompletionTBD



PROJECT STATUS REPORT — FULLERTON CAMPUS

UPDATE/IMPROVE INFRASTRUCTURE

VARIOUS STAGES

Address	321 E. Chapman Ave.	Total Project Budget	\$31,370,654
	Fullerton, CA 92832		
Number of Projects	2	Funding Source	Measure J

Sewer Line Replacement to Buildings 300 & 500

PLANNING

Design and construction for a new sewer line leading out of Building 300, and a new sewer line leading out of Building 500, as the existing lines are not functioning properly. The new sewer lines will travel from the existing buildings to the new saddle points of connection at the City of Fullerton’s sanitary sewer line, which is located in North Lemon Street.

- Project BudgetTBD
- Funding SourceMeasure J & Scheduled Maintenance Funds
- Project Delivery Method.....Design-Bid-Build
- Architect.....R2A Architects
- Estimated Construction Start.....TBD
- Targeted CompletionTBD



PROJECT STATUS REPORT — FULLERTON CAMPUS

UPDATES ON CAMPUS PROJECTS - FULLERTON COLLEGE

New Instructional Building

- BN Builders, In. and Roesling Nakamura Terada Architects, Inc. started the concept and programming phase of the building design. Initial meetings were held with the user group on April 13th, 2018 and April 20th, 2018 to discuss the intent of the design and a diagrammatic arrangement of the programmed facilities within the future structure. Further meetings for this design phase took place May 4th, 2018 and May 18th, 2018. The next meeting for this design phase will take place on June 1st, 2018.
- Notice of Intent to Award was issued to the DBE in March, 2018.
- First phase of TES & Chilled Water Plant Expansion is part of the criteria documents for this project. Expansion will address additional demand derived from the operations of this new building.
- Schematic Design phase - Target start on June 15, 2018
- Selection of the project Commissioning Agent (CxA) is underway. An RFP was issued to the District's Building Commissioning Services Pool on March 5th, 2018. Responses were due on April 16th, 2018. Evaluation of proposals will follow.

Renovate Buildings 300 & 500

- Deadline of March 1st, 2018 set up by the California Community Colleges Chancellor's Office (CCCCO) to submit drawings for review was met. Preliminary Drawings were received by CCCCCO. Funding to proceed with the Working Drawings phase of building design is anticipated in July 2018.
- R2A Architecture in collaboration with HL Construction Management produced cost of replacement estimates for Buildings 300 & 500 with the aim to demonstrate to DSA that the cost for the current scope of work is below the 50% cost of replacement threshold. Meeting or exceeding 50% of the building cost of replacement forces the project to complete seismic upgrades in compliance with the latest Building Code. The cost of remodels for Building 300 is at 33.7%. For Building 500, the cost of renovation versus replacement stands at 43.3%. These percentages will be closely monitored as the project progresses along the last two design phases.
- It is anticipated the funding for the Working Drawings phase of the project design will be authorized in July 2018. At that time efforts will start in earnest to complete the design of the project.
- Selection of the project Commissioning Agent (CxA) is underway. An RFP was issued to the District's Building Commissioning Services Pool on March 5th, 2018. Responses were due on April 16th, 2018. Evaluation of proposals will follow.

New Parking Structure

- Evaluating Design-Build project delivery method.
- Construction will not start until renovation of 300 & 500 Buildings has been completed.
- Target Construction Start in conjunction with M&O Building - Winter 2023



UPDATES ON CAMPUS PROJECTS - FULLERTON COLLEGE (Continued)

New Maintenance & Operations Building

- Target Construction Start in conjunction with New Parking Structure - Winter 2023.

New TES & Chilled Water Plant Expansion

- First phase of TES & Chilled Water Plant Expansion is part of the criteria documents for the New Instructional Building. Expansion will address additional demand derived from the operations of this new building.
- BN Builders, In. and Roesling Nakamura Terada Architects, Inc. started the concept and programming phase of the building design. Initial meetings were held with the user group on April 13th, 2018 and April 20th, 2018 to discuss the intent of the design. Further meetings for this design phase took place May 4th, 2018 and May 18th, 2018. The next meeting for this design phase will take place on June 1st, 2018.
- Notice of Intent to Award was issued to the DBE in late March, 2018.
- The project kick-off meeting was held on April 13th, 2018.
- Schematic Design phase - Target start on June 15, 2018.

Update / Improve Infrastructure

IT Network Refresh Project

- Shandam Consulting started design on October 16th, 2017, with completion targeted by the end of first semester 2018.
- The design process is not funded by Bond Measures X or J. However, the construction and implementation phase will be bond-funded by Measure J. Equipment will be owner furnished, owner installed.

Sewer Line Replacement to Buildings 300 & 500

- Replacement for the sewer line connecting Buildings 300 & 500 to city sewer on Lemon Dr. has been identified for necessary replacement. Extent of scope of work will be addressed using Scheduled Maintenance funds for the design effort, and Measure J for construction costs.
- Cost estimates and schedule for the project will be developed once the design has been completed.
- College is currently working with R2A Architecture for the design of the project.



AERIAL VIEW — ANAHEIM CAMPUS

CAMPUS PROJECTS



10th Floor Buildout
[Construction]



7th Floor Buildout
[Construction]

IT Network Refresh
(Throughout Campus)
[Design]



PROJECT STATUS REPORT — ANAHEIM CAMPUS

7th AND 10th FLOORS BUILDOUT CONSTRUCTION

Address	1830 W. Romneya Dr. Anaheim, CA 92801
Project Manager	Rick Williams NOCCCD
Architect	R²A Architecture
General Contractor	Paul C. Miller Construction Co.
Project Delivery Method	Design - Bid - Build
DSA Application A#	04-115733



Project Overview

The 7th floor remodels will accommodate NOCE’s needs for assessment centers, while the 10th floor will accommodate the District’s Vice Chancellor, Educational Services & Technology Department.

- Total Project Budget\$6,038,776
- Funding SourceMeasure X and Measure J
 - Measure J\$2,151,359
 - Measure X\$3,887,417
- Project Gross Square Footage.....19,630 GSF (7th & 10th Floors)
- Construction StartJanuary 22, 2018
- Targeted Construction CompletionJanuary 2019
- Targeted Project Completion.....April 2019

PROJECT STATUS REPORT — ANAHEIM CAMPUS

5th FLOOR CTE LABORATORY AND 2ND FLOOR ROOM 215 CONSTRUCTION

Address	1830 W. Romneya Dr. Anaheim, CA 92801
Project Manager	Cora Baldovino NOCCCD
Architect	R²A Architecture
General Contractor	Interlog Construction
Project Delivery Method	Design - Bid - Build
DSA Application A#	04-116694



Project Overview

The 5th floor area remodels will accommodate a new laboratory and instructional space for the Career Technical Education program. The 2nd floor area tenant improvements for will convert Testing Room 215 into three new offices to be used by the Student Success and Support Program (SSSP) Counseling.

- Total Project Budget\$614,256
- Funding SourceMeasure J
- Project Gross Square Footage.....1,765 GSF
 - 5th Floor CTE Laboratory.....1,382 GSF
 - 2nd Floor Counseling Office Room 215 TI383 GSF
- Construction Start.....April 17, 2018
- Targeted Construction CompletionJuly 2018
- Targeted Project Completion.....August 2018



PROJECT STATUS REPORT — ANAHEIM CAMPUS

UPDATE/IMPROVE INFRASTRUCTURE

PLANNING

Address	1830 W. Romneya Dr. Anaheim, CA 92801	Total Project Budget	\$1,766,540
		Total Budget Allocated	\$1,000,000
Number of Projects	1	Funding Source	Measure J

General Overview

Projects to address infrastructure improvements or upgrades throughout the Campus. Funds are allocated to projects as needs are identified.

IT Network Refresh Project Overview

DESIGN

Assessment of Campus data network infrastructure, identify necessary upgrades, and changes that will enable supporting future campus needs; specifically addressing wired, wireless, voice, and video networks. Design of a new network will account for the District’s needs specific to logical infrastructure for the next 10 years. Physical infrastructure will also account for the District’s needs for the next 20 years. The scope includes replacing network core switches, provide a more responsive support structure, preparing for cloud computing, and adaptation of voice over IP systems across the District.

- Project Budget\$1,000,000
- Funding SourceMeasure J & Capital Outlay Funds
- Project Delivery MethodTBD
- Architect.....Shandam Consulting
- Estimated Construction Start.....TBD
- Targeted CompletionTBD



PROJECT STATUS REPORT — ANAHEIM CAMPUS

UPDATES ON CAMPUS PROJECTS - ANAHEIM CAMPUS

7th and 10th Floors Buildout

- Paul C Miller Construction continues construction work on the 7th-floor tenant improvements. At the end of April, mechanical and electrical installations were in rough-in, along with initial finishes such as door frames and ceiling grid. Walls have been painted with initial primer coats. ADA adjustment to the path of travel into the building were also addressed.
- In July 2018 construction activities will begin on the 10th floor upon the completion of work on the 7th floor. Phase two of the project is anticipated to conclude in December 2018.
- A change order is in the works for Ninyo & Moore, Laboratory-of-Record (LOR) for the 7th and 10th Floors Buildout. \$11,388 will be added to the scope of work for additional material testing and inspection services.
- CBRE/Heery is working with Paul C. Miller in project commissioning efforts for the 7th Floor tenant improvements. Periodic visits have taken place during the installation of the mechanical and ventilation components of the project. CBRE/Heery also began retro-commissioning investigations for the Anaheim Tower. A detailed schedule of activities and milestones is being developed.

5th Floor CTE Laboratory and 2nd Floor Counseling Office Room 215 TI

- Interlog Construction was selected as the lowest responsive and responsible bidder for the construction work at the 5th CTE Lab and 2nd Floor Room 215. The Board of Trustees authorized the request to award a contract for \$410,000 including an allowance, at the March 24th meeting.
- Vital Inspection Services, Inspector-of-Record (IOR); and Ninyo & More, Laboratory-of-Record (LOR) have been contracted for the 5th CTE Lab and 2nd Floor Room 215 scope of work.
- A Notice to Proceed was issued to Interlog Construction on April 10th, 2018.
- The project kick-off meeting for the 5th CTE Lab and 2nd Floor Room 215 was held on April 17th, 2018 with Interlog Construction, R2A Architecture, and Vital Inspections in attendance as the primary members of the project delivery team.
- Construction work started on April 23rd with demolition of existing components in both floors. The installation of HVAC and fire suppression systems is to follow.
- An anticipated completion date of July 24th, 2018 is expected for this project.

Update / Improve Infrastructure

IT Network Refresh Project

- Shandam Consulting started design on October 16th, 2017, with completion is targeted by the end of first semester of 2018.
- The design process is not funded by Bond Measures X or J. However, the construction and implementation phase will be bond-funded by Measure J. Equipment will be owner furnished, owner installed.



Intentionally Left Blank

FINANCIAL REVIEW

- Capital Projects Update
- Estimated Project Budgets
- 90-Day Look Ahead Schedule



CAPITAL PROJECT UPDATES

**North Orange County Community College District
Measure J
Capital Projects Update
April 30, 2018**

Bond Authorization:

Bond Authorization	574,000,000	100.00%
Bonds Sold - Series A	100,000,000	17.42%
Available Principal Amount of Bonds	474,000,000	82.58%

Bond Funding Sources (Budget):

		Actual Received	Remaining Balance
Bond Authorization	574,000,000	100,000,000	474,000,000
Estimated Net Interest Earnings	3,600,000	557,977	3,042,023
Totals	577,600,000	100,557,977	477,042,023

Cost Status:

Campus	Total Budget	%	Actual Expenses to Date	Remaining Balance
Anaheim Campus	17,007,800	2.94%	96,021	16,911,779
Cypress Campus	225,921,200	39.11%	4,475,569	221,445,631
Fullerton Campus	311,126,400	53.87%	826,478	310,299,922
District Expenses				
• Program Management	20,000,000	3.46%	1,858,024	18,141,976
• Bond Issuance Cost	3,544,600	0.61%	557,977	2,986,623
Totals	577,600,000	100.00%	7,814,070	569,785,930



ESTIMATED PROJECT BUDGETS

CYPRESS CAMPUS

CURRENT PROJECTS

ESTIMATED PROJECT BUDGET—CYPRESS

CURRENT PROJECTS	Measure J Budget	Measure J Expenses	Balance
New Science, Engineering, and Mathematics Building	\$ 94,783,786	\$ 3,113,973	\$ 91,669,813
New Veterans' Resource Center & Student Activities Center Expansion	\$ 13,500,000	\$ 762,041	\$ 12,737,959
Veterans' Memorial Bridge and Tribute Garden	\$ 100,800	\$ -	\$ 100,800
Fine Arts Capital Improvement	\$ 16,764,338	\$ -	\$ 16,764,338
Update/Improve Infrastructure	\$ 15,890,244	\$ -	\$ 15,890,244
Update/Improve Infrastructure (New SEM)	\$ 2,447,588	\$ -	\$ 2,447,588
Update/Improve Infrastructure (IT)	\$ 6,000,000	\$ -	\$ 6,000,000
Planning (Non Project Specific)	\$ 520,000	\$ 138,130	\$ 381,870
Library-Learning Resource Center Expansion	\$ 15,000,000	\$ 38,665	\$ 14,961,335
Swing Space Projects	\$ 3,236,521	\$ 422,761	\$ 2,813,761
Mass Communications & Security Systems Upgrade	\$ 4,138,220	\$ -	\$ 4,138,220
Mass Communications & Security Systems Upgrade (New SEM)	\$ 327,006	\$ -	\$ 327,006
Mass Communications & Security Systems Upgrade (Safety Film)	\$ 145,774	\$ -	\$ 145,774
Mass Communications & Security Systems Upgrade (Door Replacement)	\$ 37,500	\$ -	\$ 37,500
Pool Restoration and Upgrade	\$ 4,876,000	\$ -	\$ 4,876,000
Gym I/Gym II Restoration and Restrooms	\$ 4,837,500	\$ -	\$ 4,837,500
Gateway Phase 1	\$ 5,810,000	\$ -	\$ 5,810,000
Under Piazza & Stairwell Restoration	\$ 1,963,800	\$ -	\$ 1,963,800
Tech I/Tech III Capital Improvements	\$ 27,645,342	\$ -	\$ 27,645,342
Athletic Field Realignment/Entry Revisions/Parking Lot Improvements	\$ 7,896,781	\$ -	\$ 7,896,781
SUB TOTAL	\$ 225,921,200	\$ 4,475,569	\$ 221,445,631



ESTIMATED PROJECT BUDGETS

FULLERTON CAMPUS

CURRENT PROJECTS

ESTIMATED PROJECT BUDGET—FULLERTON

CURRENT PROJECTS	Measure J Budget	Measure J Expenses	Balance
New Instructional Building	\$ 54,000,000	\$ 49,185	\$ 53,950,815
Renovate Buildings 300 & 500	\$ 20,482,000	\$ 575,603	\$ 19,906,397
New TES & Chilled Water Plant Expansion	\$ 10,139,524	\$ 68,070	\$ 10,071,455
Chiller Plant Expansion (New Instructional Bldg) Phase I	\$ 2,000,000		
Update/Improve Infrastructure	\$ 23,370,654	\$ -	\$ 23,370,654
Update/Improve Infrastructure (IT)	\$ 8,000,000	\$ -	\$ 8,000,000
Planning (Non Project Specific)	\$ 595,000	\$ 133,621	\$ 461,379
New Parking Structure	\$ 28,937,954	\$ -	\$ 28,937,954
New M & O Building	\$ 3,744,828	\$ -	\$ 3,744,828
New Horticulture/Lab School/STEM Lab	\$ 23,817,288	\$ -	\$ 23,817,288
New Performing Arts Complex—Phase 1	\$ 16,133,000	\$ -	\$ 16,133,000
New Performing Arts Complex—Phase 2	\$ 12,409,153	\$ -	\$ 12,409,153
New Welcome Center & Lot C West	\$ 36,564,000	\$ -	\$ 36,564,000
Demolish Buildings 1100, 1300 and 2300	\$ 2,182,000	\$ -	\$ 2,182,000
Demolish Building 2000	\$ 1,108,000	\$ -	\$ 1,108,000
Renovate Building 600	\$ 6,739,100	\$ -	\$ 6,739,100
Renovate Building 840 Campus Services	\$ 7,878,400	\$ -	\$ 7,878,400
Renovate Health Center	\$ 1,328,800	\$ -	\$ 1,328,800
Renovate Building 1000 Fine Arts Gallery	\$ 23,468,500	\$ -	\$ 23,468,500
Renovate Faculty Lounge & Offices	\$ 6,212,250	\$ -	\$ 6,212,250
Renovate Wellness Center	\$ 2,534,400	\$ -	\$ 2,534,400
Landscape & Hardscape Improvements	\$ 3,840,000	\$ -	\$ 3,840,000
Renovate Building 3100	\$ 2,639,340	\$ -	\$ 2,639,340
Demolish Building 1901-04, 1956-60, 3000	\$ 1,333,000	\$ -	\$ 1,333,000
Parking Lot Improvements at Building 3000	\$ 1,999,500	\$ -	\$ 1,999,500
Renovate Building 2100	\$ 8,277,500	\$ -	\$ 8,277,500
Demolish Buildings 2200 & 3104	\$ 1,392,209	\$ -	\$ 1,392,209
SUB TOTAL	\$311,126,400	\$826,478	\$308,299,922



ESTIMATED PROJECT BUDGETS

ANAHEIM CAMPUS

CURRENT PROJECTS

ESTIMATED PROJECT BUDGET—ANAHEIM

CURRENT PROJECTS	Measure J Budget	Measure J Expenses	Balance
Reactivate 1st Floor Warehouse Areas for Storage	\$ 202,000	\$ -	\$ 202,000
7th and 10th Floors Buildout	\$ 2,151,359	\$ -	\$ 2,151,359
5th Floor CTE & 2nd Floor Room 215	\$ 614,256	\$ 96,021	\$ 518,235
Repurpose Childcare	\$ 1,246,200	\$ -	\$ 1,246,200
Second Floor Tenant Improvements	\$ 835,000	\$ -	\$ 835,000
Outdoor Patio Remodel	\$ 1,382,500	\$ -	\$ 1,382,500
Fourth Floor Improvements	\$ 218,000	\$ -	\$ 218,000
Update/Improve Infrastructure	\$ 766,540	\$ -	\$ 766,540
Update/Improve Infrastructure (IT)	\$ 1,000,000	\$ -	\$ 1,000,000
Planning (Non Project Specific)	\$ 440,000	\$ -	\$ 440,000
Student Lounge	\$ 222,200	\$ -	\$ 222,200
Upper Parking Lot Remodel	\$ 1,104,500	\$ -	\$ 1,104,500
Develop Interior and Exterior Signage	\$ 313,800	\$ -	\$ 313,800
Enliven Corridors/Develop Areas for Student Collaboration	\$ 888,800	\$ -	\$ 888,800
Develop South Entry Plaza	\$ 816,800	\$ -	\$ 816,800
Develop East Entry Plaza	\$ 413,200	\$ -	\$ 413,200
Remove Planters/Create Japanese Rock Garden	\$ 309,901	\$ -	\$ 309,901
Reconfigure Parking Lots	\$ 2,099,000	\$ -	\$ 2,099,000
Develop Drop-Off Plaza at Romneya Drive	\$ 1,069,000	\$ -	\$ 1,069,000
Develop Intersection at Romneya & Coronet	\$ 914,744	\$ -	\$ 914,744
SUB TOTAL	\$ 17,007,800	\$ 96,021	\$ 16,911,779



ESTIMATED PROJECT BUDGETS

DISTRICT

ESTIMATED PROJECT BUDGET—DISTRICT

DISRICT WIDE EXPENSE	Measure J Budget	Measure J Expenses	Balance
Program Management Fees	\$ 20,000,000	\$ 1,858,024	\$ 18,141,976
Bond Issuance Cost	\$ 3,544,600	\$ 557,977	\$ 2,986,623
SUB TOTAL	\$ 23,544,600	\$ 2,416,001	\$ 21,128,599



NORTH ORANGE COMMUNITY COLLEGE DISTRICT
CYPRESS - FULLERTON - ANAHEIM (SCE)
90-DAY LOOK AHEAD SCHEDULE

(05-01-18 TO 07-31-18)

	May					June					July					Comments
	1	8	15	22	29	5	12	19	26	3	10	17	24	31		
GENERAL																
NOCCCD Board Meetings															June 6th	
COC Meetings																
Bi-Monthly DSA Meeting																
Bond Program Management Team Mtgs.															July Meeting is to be determined June & July Meetings are to be determined	
Anaheim - Campus Coordination Meeting															May 16th, and June 12th	
Cypress - Campus Coordination Meeting															May 15th, and June 19th	
Fullerton - Campus Coordination Meeting																
PLANNING																
DESIGN PHASE																
CYPRESS																
Gym II Reconfiguration for SAC Swing Space															Target completion Summer 2018	
Safety Film and Door Replacement Projects															In Progress	
FULLERTON																
Working Drawings for Renovate Buildings 300 & 500															Scheduled to Start Mid-June 2018	
Design Development for Renovate Buildings 300 & 500															In Progress. Target Completion July 2018	
Construction Documents for Renovate Buildings 300 & 500															Working Drawings pending State Funding Approval	
New Instructional Building Concept / Programming															Target completion June 15, 2018	
New Instructional Building Schematic Design															Target completion August 10, 2018	
INFORMATION TECHNOLOGY NETWORK REFRESH																
Design for Network Refresh Stages I & II *															To be completed by End of First Semester 2018	
Final Report / Design Completion *															To be completed by End of First Semester 2018	
DSA PHASE																
CYPRESS																
Review of Construction Documents for New SEM															Approval Anticipated in September 2018	
Review of Construction Documents for New VRC/SAC															Approval Anticipated in September 2018	
PRE-CONSTRUCTION PHASE																
CYPRESS																
Bidding for Construction Scope of Work Lots 4 & 5															Bidding Complete - Presentation to BOT on 3/24/18	
ANAHEIM (NOCE)																
5th/2nd Floor Pre-Construction & Kick-off Meeting															Complete	
FULLERTON																
New Instructional Building Pre-Construction & Kick-off Meeting															Complete	
CONSTRUCTION PHASE																
CYPRESS																
Cypress - Lots 4 & 5 Construction															Anticipated Completion August 2018	
ANAHEIM (NOCE)																
Anaheim - 7th and 10th Floors Buildout Phase I Construction															In Progress - Target Completion June 20, 2018	
Anaheim - 7th Move Management & Close-Out															Target Start June 19, 2018	
Anaheim - 7th and 10th Floors Buildout Phase II Construction															Target Start July 10, 2018	
Anaheim - 5th and 2nd Floors Construction															Target Completion August 2018	
CLOSE-OUT PHASE																

Intentionally Left Blank



June 2018

1830 W. Romneya Dr. Anaheim, CA 92801