



Capital Projects Report

to the

Citizens Oversight Committee

March 2018

MAAS

Intentionally Left Blank

TABLE OF CONTENTS

Projects in Feasibility, Planning, Programming, Design, and Construction

CAMPUS SITE PLANS

<i>Cypress Campus</i>	2
<i>Fullerton Campus</i>	3
<i>Anaheim Campus</i>	4

Project Status Report

Cypress Campus

<i>New Science, Engineering, and Mathematics Building</i>	7
<i>New Veterans' Resource Center, Student Activities Center Expansion</i>	8
<i>Veterans' Memorial Bridge and Tribute Garden</i>	9
<i>Swing Space Projects</i>	10
<i>Update / Improve Infrastructure</i>	11-12
<i>Mass Communication and Security Systems Upgrade</i>	13
<i>Updates on Campus Projects - Cypress College</i>	14-16

Fullerton Campus

<i>New Instructional Building</i>	19
<i>Renovate Buildings 300 & 500</i>	20
<i>New Parking Structure</i>	21
<i>New Maintenance & Operations Building</i>	22
<i>New TES & Chilled Water Plant Expansion</i>	23
<i>Update / Improve Infrastructure</i>	24
<i>Updates on Campus Projects - Fullerton College</i>	25-26

Anaheim Campus

<i>7th and 10th Floors Buildout</i>	29
<i>5th Floor CTE Laboratory and 2nd Floor Room 215</i>	30
<i>Update / Improve Infrastructure</i>	31
<i>Updates on Campus Projects - Anaheim Campus</i>	32

Financial Review

CAPITAL PROJECT UPDATES

<i>Measure J</i>	35
------------------------	----

ESTIMATED PROJECT BUDGETS

<i>Cypress Campus</i>	36
<i>Fullerton Campus</i>	37
<i>Anaheim Campus</i>	38
<i>District</i>	39

90-DAY LOOK AHEAD SCHEDULE

<i>Cypress/Fullerton/Anaheim</i>	40
--	----

Intentionally Left Blank

PROJECTS IN FEASIBILITY, PLANNING, PROGRAMMING, AND DESIGN

- Campus Site Plans
- Project Status Reports



SITE PLAN — CYPRESS CAMPUS

FEASIBILITY, PLANNING, PROGRAMMING & DESIGN

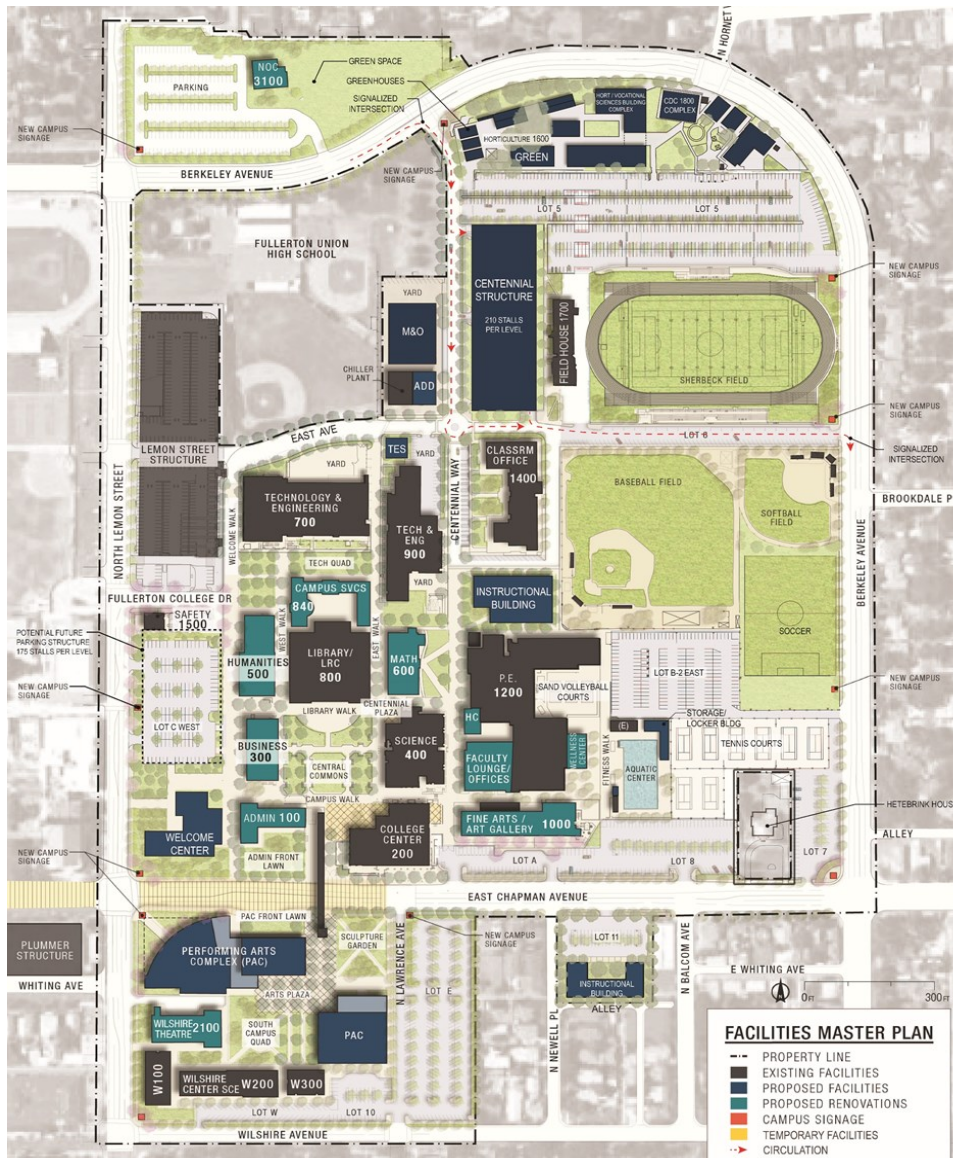
- New Science, Engineering and Mathematics Building
- New Veterans' Resource Center & Student Activities Center Expansion
- Veterans' Memorial Bridge and Tribute Garden
- Swing Space Projects
- Library-Learning Resource Center Expansion (TBD)
- Update / Improve Infrastructure
- Mass Communication and Security Systems Upgrade
- ADA Transition Planning



SITE PLAN — FULLERTON CAMPUS

FEASIBILITY, PLANNING, PROGRAMMING & DESIGN

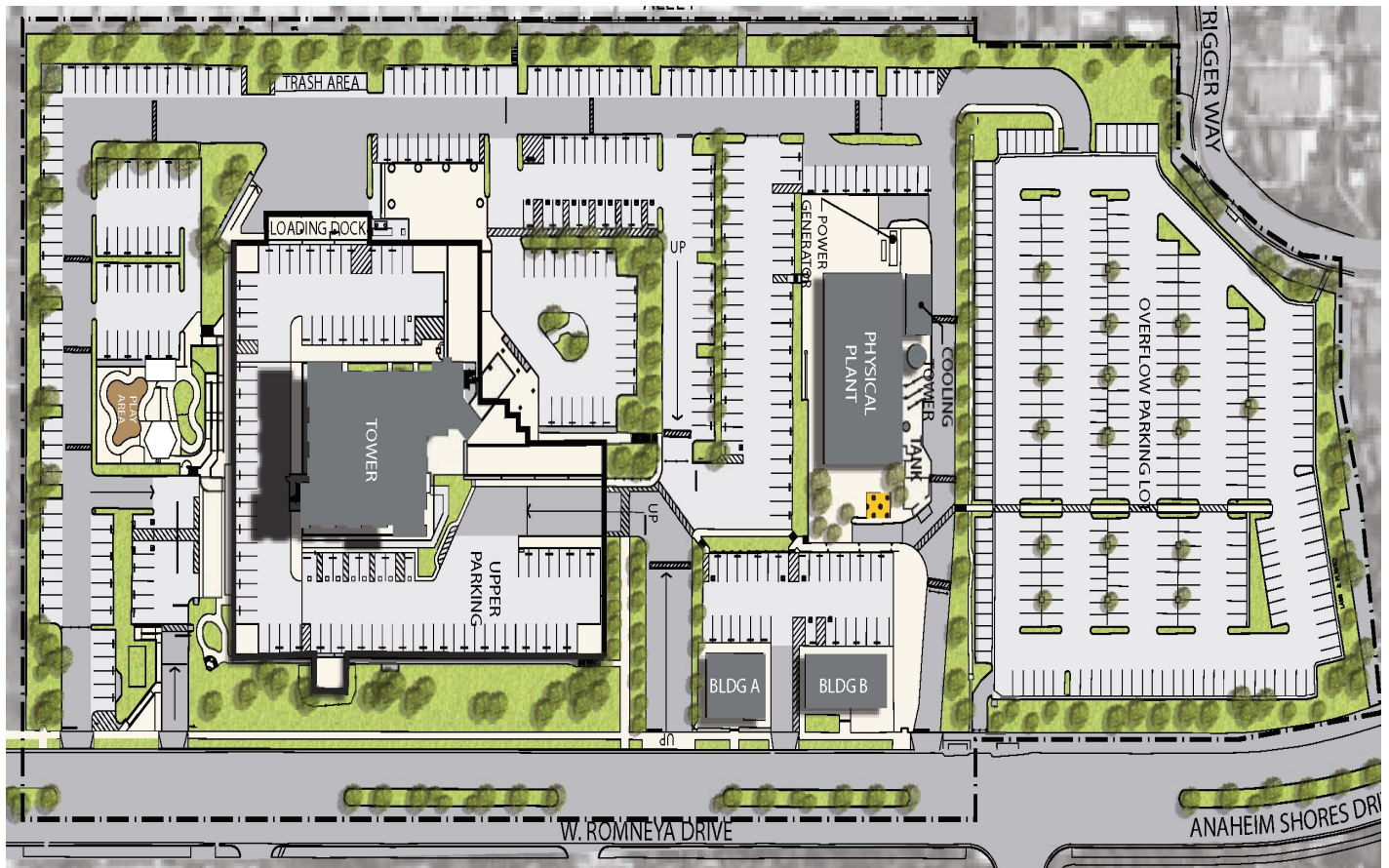
- Renovate Buildings 300 & 500
- New Instructional Building
- New TES & Chilled Water Plant Expansion
- New Parking Structure
- New Maintenance & Operations Building
- Update / Improve Infrastructure
- ADA Transition Planning



SITE PLAN — ANAHEIM CAMPUS

FEASIBILITY, PLANNING, PROGRAMMING & DESIGN

- Anaheim 7th & 10th Floors Buildout
- 5th Floor CTE Laboratory and 2nd Floor Counseling Office Room 215
- All Project Scopes, Budgets, Schedules and Priorities under review. Program Requirements in Early Planning Phases.
 - 1st Floor Upgrades
 - Parking Deck Replacement (TBD)
- Update / Improve Infrastructure
- ADA Transition Planning



Intentionally Left Blank

AERIAL VIEW — CYPRESS CAMPUS

CAMPUS PROJECTS



Veterans' Memorial Bridge & Tribute Garden
[Construction Documents]



New Science, Engineering and Mathematics Building
[Construction Documents]



Swing Space Projects
SEM Roof Replacement
[Bidding]

Swing Space Projects
Gym II Space for VRC/SAC
[Construction]

Swing Space Projects
Parking Lot #5
[Bidding / Demolition]

IT Network Refresh
(Throughout Campus)
[Design]



New Veterans' Resource Center & Student Activities Center Expansion
[Construction Documents]

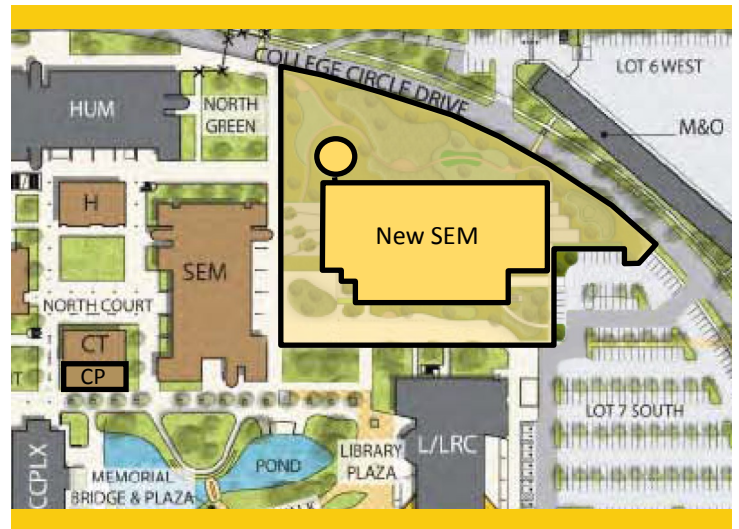


PROJECT STATUS REPORT — CYPRESS CAMPUS

NEW SCIENCE, ENGINEERING, AND MATHEMATICS BUILDING

CONSTRUCTION DOCUMENTS

Address	9200 Valley View St. Cypress, CA 90630
Project Manager	Emily Day / Ryan Lippmann Cypress College
Architect	LPA, Inc.
Construction Manager at Risk	Sundt
DSA Application A#	04-117024



Project Overview

High priority project to increase the efficiency of the square footage and accommodation of services for Science, Engineering, and Mathematics programs with seven new labs and seven new additional classrooms.

- Total Project Budget\$97,783,786
- Funding SourceMeasure J & Campus Funds
 - Measure J.....\$94,783,786
 - Campus Funds (Estimated FF&Es)\$3,000,000
- Project Gross Square Footage.....106,023 GSF
- Estimated Construction Start.....Spring 2019
- Targeted CompletionSpring 2021

Note: Total Estimated Project Cost at Schematic Development Stage

* New Science, Engineering and Mathematics Building	\$97,783,786
* New SEM Infrastructure Project (Page 17)	\$2,138,124
* New SEM Mass Communication & Security Systems Project (Page 18)	\$324,115
Total Estimated Project Cost	\$100,246,025



PROJECT STATUS REPORT — CYPRESS CAMPUS

NEW VETERANS' RESOURCE CENTER & STUDENT ACTIVITIES CENTER EXPANSION CONSTRUCTION DOCUMENTS

Address	9200 Valley View St. Cypress, CA 90630
Project Manager	Emily Day / Ryan Lippmann Cypress College
Architect	LPA, Inc.
Construction Manager at Risk	Sundt
DSA Application A#	04-117023



Project Overview

High priority project to increase the square footage and provide new accommodation of services for the Veterans' Resource Center (VRC)/Student Activities Center (SAC) Expansion.

- Total Project Budget\$13,500,000
- Funding SourceMeasure J
- Buildings Gross Square Footage12,119 GSF
 - Veterans' Resource Center (VRC).....4,330 GSF
 - Student Activities Center (SAC)7,789 GSF
- VRC Site Plaza46,835 SF
- Estimated Construction Start.....Spring 2019
- Targeted CompletionFall 2020



PROJECT STATUS REPORT — CYPRESS CAMPUS

VETERANS' MEMORIAL BRIDGE AND TRIBUTE GARDEN CONSTRUCTION DOCUMENTS

Address	9200 Valley View St. Cypress, CA 90630
Project Manager	Emily Day / Ryan Lippmann Cypress College
Architect	LPA, Inc.
Construction Manager at Risk	Sundt
DSA Application A#	04-117023



Project Overview

Construction of a Veterans' Memorial Bridge (VMB), Tribute Garden, and site improvements to adjacent areas.

- Total Project Budget\$1,600,800
- Funding SourceMeasure J & Local
 - Measure J\$100,800
 - Local Funds.....\$1,500,000
- Project Gross Square Footage.....16,357 GSF
- Estimated Construction Start.....Spring 2019
- Targeted CompletionFall 2020



PROJECT STATUS REPORT — CYPRESS CAMPUS

SWING SPACE PROJECTS

VARIOUS STAGES

Address	9200 Valley View St. Cypress, CA 90630
Project Manager	Albert Miranda Cypress College
Architect	(See Updates on Projects)
Project Delivery Method	(See Updates on Projects)



Project Overview

Currently, there are three different ventures that are part of the Swing Space Projects. Roof repairs will be performed at the existing SEM Building, which will be used as a swing space upon the completion of the New SEM building. Available space within Gym II will accommodate the Student Activities Center (SAC) activities during construction of the New VRC. Parking Lot 5 South will be reconfigured aiming to increase parking capacity to compensate for the loss of stalls resulting from the construction site for the New SEM Building.

- Total Project Budget\$3,236,521
- Funding SourceMeasure J
 - Parking Lot #5\$2,300,000 (Estimated)
 - Existing SEM building Roof Replacement\$407,000 (Estimated)
 - VRC / SAC Swing Space to Gym II.....\$200,000 (Estimated)
- Estimated Construction Start
 - Parking Lot #5December 2017
 - Existing SEM building Roof ReplacementFebruary 2018
 - VRC / SAC Swing Space to Gym II.....June 2017
- Targeted Completion
 - Parking Lot #5June 2018
 - Existing SEM building Roof ReplacementJanuary 2018
 - VRC / SAC Swing Space to Gym II.....July 2018

PROJECT STATUS REPORT — CYPRESS CAMPUS

UPDATE/IMPROVE INFRASTRUCTURE

VARIOUS STAGES

Address	9200 Valley View St. Cypress, CA 90630	Total Project Budget	\$24,337,832
		Total Budget Allocated	\$8,138,124
Number of Projects	2	Funding Source	Measure J

General Overview

Projects to address infrastructure improvements or upgrades throughout the Campus. Funds are allocated to projects as needs are identified.

IT Network Refresh Project Overview

DESIGN

Assessment of Campus data network infrastructure and identify necessary upgrades and changes that will enable supporting future campus needs; specifically addressing wired, wireless, voice, and video networks. Design of a new network will account for the District’s needs specific to logical infrastructure for the next 10 years. Physical infrastructure will also account for the District’s needs for the next 20 years. The scope includes replacing network core switches, provide a more responsive support structure, preparing for cloud computing, and adaptation of voice over IP systems across the District.

- Project Budget\$6,000,000
- Funding SourceMeasure J & Capital Outlay Funds
- Project Delivery MethodTBD
- Architect.....Shandam Consulting
- Estimated Construction Start.....TBD
- Targeted CompletionTBD



PROJECT STATUS REPORT — CYPRESS CAMPUS

UPDATE/IMPROVE INFRASTRUCTURE (Continued)

VARIOUS STAGES

Address	9200 Valley View St. Cypress, CA 90630	Total Project Budget	\$24,337,832
		Total Budget Allocated	\$8,138,124
Number of Projects	2	Funding Source	Measure J

New Science, Engineering, and Mathematics Building Infrastructure

Project Overview

CONSTRUCTION DOCUMENTS

Improvements to Campus power and sewer infrastructure to connect to the future New SEM Building. The scope of work includes storm water drain relocation, water supply reconfiguration, sanitary sewer replacement, gas and mechanical utilities rearrangement, site lighting, and electrical duct bank relocation.

- Project Budget\$2,138,124
- Funding SourceMeasure J
- Project Delivery Method.....Construction Manager at Risk (CMAR)
- Architect.....LPA, Inc.
- Construction Manager at Risk.....Sundt
- Project ManagerEmily Day / Ryan Lippmann
- Estimated Construction Start.....Spring 2019
- Targeted CompletionSpring 2021



PROJECT STATUS REPORT — CYPRESS CAMPUS

MASS COMMUNICATION & SECURITY SYSTEMS UPGRADE

VARIOUS STAGES

Address	9200 Valley View St. Cypress, CA 90630	Total Project Budget	\$4,648,500
		Total Budget Allocated	\$324,115
Number of Projects	1	Funding Source	Measure J

General Overview

Projects to address fire alarm, mass communication, security, access control, and lockdown systems throughout the Campus. Funds are allocated to projects as needs are identified.

New Science, Engineering, and Mathematics Building, Mass Communication & Security Systems Project Overview

CONSTRUCTION DOCUMENTS

Installation of bullet resistant glazing and improvements to Campus fire alarm and security system to connect to the future New SEM Building.

- Project Budget\$324,115
- Funding SourceMeasure J
- Project Delivery Method.....Construction Manager at Risk (CMAR)
- Architect.....LPA, Inc.
- Construction Manager at Risk.....Sundt
- Project ManagerEmely Day / Ryan Lippmann
- Estimated Construction Start.....Spring 2019
- Targeted CompletionSpring 2021



PROJECT STATUS REPORT — CYPRESS CAMPUS

UPDATES ON CAMPUS PROJECTS - CYPRESS COLLEGE

New Science, Engineering, and Mathematics Building

- Looking at the total cost of the New SEM Building, the original estimate was \$89,088,967. The current Design Development estimate is \$100,246,025, an increase of \$11,157,058. Following is a summary of the increases:

Escalation	\$3,910,737
Foundation Work Increases*	\$3,778,132
Infrastructure Outside Footprint	\$2,138,124
Mass Communication / Safety Upgrades	\$324,115
DSA Rate Increase; change in building square footage*	\$1,005,950
<hr/>	
Total:	\$11,157,058

*From feasibility analysis to 100% Design Development

Budget for the Mass Communication/Safety Upgrades and the Infrastructure work (\$2,462,239) are in other line item budgets in the Measure J program. The balance of \$5,694,819 has been transferred from the Athletic Field Realignment project at the Schematic Design and Design Development phases.

- The Campus has set aside \$3,000,000 in funds for the building's furniture, fixtures, and equipment (FF&E).
- The Board of Trustees concurred with the cost increases at 100% Design Development following a presentation on December 12th, 2017.
- Review of 50% Construction Documents submitted on December 13th, 2017 continues at the Campus. Comments from District's IS Department have been incorporated into the drawings. A request to convert one proposed General Biology classroom to an Anatomy workshop in alignment with Programming requirements is under evaluation. The phase is scheduled for completion in mid-March 2018.
- The project is expected to be submitted to DSA for review on March 15th, 2018.
- LPA's original contract included FF&E management for the project, however, FF&E space plans were not submitted with the Design Development submittals. The FF&E management component was removed from LPA's contract, since the space plans were not submitted. Dovetail is currently working with campus project team in FF&E space plans. The Purchasing Department is finalizing a contract amendment with Dovetail. FF&E study will be completed by mid-February 2018.
- Requisition (RQ) has been submitted for Psomas, based on LPA's request, for a survey for ADA access path to submit for DSA submittal.
- Requisitions (RQs) have been submitted for District to provide checks for CGS fees.
- Construction Manager at Risk - Sundt is continuing collaboration with LPA and the Campus during Pre-Construction phase including logistics coordination and cost estimates.
- Hired Emily Day as new Vice President, Administrative Services at Cypress College to oversee the Campus Construction Program.



PROJECT STATUS REPORT — CYPRESS CAMPUS

UPDATES ON CAMPUS PROJECTS - CYPRESS COLLEGE (Continued)

- Hired Ryan Lippmann from Porter Consulting, LLC to temporarily replace Susan Rittel until the replacement hiring process can be completed. Expected to have the position replacement within 6 months.

New Veterans' Resource Center & Students Activities Center Expansion

- Design Development cost estimate submitted by Sundt is within the construction budget. Campus is working with LPA and Sundt to prevent cost overruns within their control.
- Review of 50% Construction Documents submitted on December 13th, 2017 continues at the Campus. The phase is scheduled for completion in mid-March 2018.
- The project is expected to be submitted to DSA for review on March 15th, 2018.
- LPA's original contract included FF&E management for the project, however, FF&E space plans were not submitted with the Design Development submittals. The FF&E management component was removed from LPA's contract, since the space plans were not submitted. Dovetail is currently working with campus project team in FF&E space plans. The Purchasing Department is finalizing a contract amendment with Dovetail. FF&E study will be completed by mid-February 2018.
- Requisition (RQ) has been submitted for Psomas, based on LPA's request, for a survey for ADA access path to submit for DSA submittal.
- Requisitions (RQs) have been submitted for District to provide checks for CGS fees.
- Construction Manager at Risk - Sundt is continuing collaboration with LPA and the Campus during Pre-Construction phase including logistics coordination and cost estimates.

Veterans' Memorial Bridge and Tribute Garden

- Psomas completed potholing in front of the existing SAC due to major utility lines running concurrently in such area. Prior to sitework, LPA's Civil Engineer and the Geotechnical Engineer has requested depths, pipe sizes, and pipe materials to be located. Geotechnical Engineer stated that pipe materials are critical to know as the water is corrosive at Cypress.
- Design Development cost estimate submitted by Sundt is within the construction budget. Campus is working with LPA and Sundt to prevent cost overruns within their control.
- Review of 50% Construction Documents submitted on December 13th, 2017 continues at the Campus. The phase is scheduled for completion in mid-March 2018.
- The project is expected to be submitted to DSA for review on March 15th, 2018.
- Construction Manager at Risk - Sundt is continuing collaboration with LPA and the Campus during Pre-Construction phase including logistics coordination and cost estimates.



PROJECT STATUS REPORT — CYPRESS CAMPUS

UPDATES ON CAMPUS PROJECTS - CYPRESS COLLEGE (Continued)

Swing Space Projects

- Parking Lot #5 Expansion - Westberg & White Inc. completed design phase in October 2017. DSA approved the Construction Drawings in December 2017. Project construction is moving to bidding phase. Wreck Age Demolition is carrying out demolition activities from January 22, until February 22, 2018. Construction work will be scheduled during upcoming breaks to minimize negative effects on parking availability.
- Existing SEM building Roof Replacement - Project bid documents being prepared by District Purchasing alongside other scheduled maintenance projects.
- Veterans' Resource Center / Student Activities Center moved to Swing Space at Gym II - Work started on 6/5/17. Estimated construction cost is \$150,000 and moving costs are \$50,000. A purchase order for the office reconfiguration at the Gym II swing space was issued to Integrated Interiors on 5/31/17. Space Planning consultant from CBI has produced the first draft of the furniture layout for swing space move. The end users will be reviewing and making comments as we finalize that portion of the work. Personnel move was initially intended to take place during the winter break, but it was postponed to the Summer of 2018, since the VRC/SAC construction will not start until after the Summer of 2018.

Update / Improve Infrastructure

IT Network Refresh Project

- Shandam Consulting started design on October 16th, 2017, with completion targeted in March 2018.
- The design process is not funded by Bond Measures X or J. However, the construction and implementation phase will be bond-funded by Measure J. Equipment will be owner furnished, owner installed.

New Science, Engineering, and Mathematics Building Infrastructure

- This project was activated in April 2017. Scope of work is part of New Science, Engineering, and Mathematics building design documents.

Mass Communication and Security Systems Upgrade

New Science, Engineering, and Mathematics Building, Mass Communication & Security System Project

- This project was activated in April 2017. Scope of work is part of New Science, Engineering, and Mathematics building design documents.
- Mass communication system will be tied in to the fire alarm. The existing fire alarm is tied in to Gym I, Co-Gen, and existing SAC. Scope of work will include upgrading the existing fire alarm to separate the renovated SAC and new VRC to a stand-alone fire alarm panel.



Intentionally Left Blank

AERIAL VIEW — FULLERTON CAMPUS

CAMPUS PROJECTS

IT Network Refresh
(Throughout Campus)
[Design]

New TES & Chilled Water
Plant Expansion
[Phase I - Bidding]

New Maintenance & Operations
Building
[Pre-Planning]

New Parking Structure
[Pre-Planning]



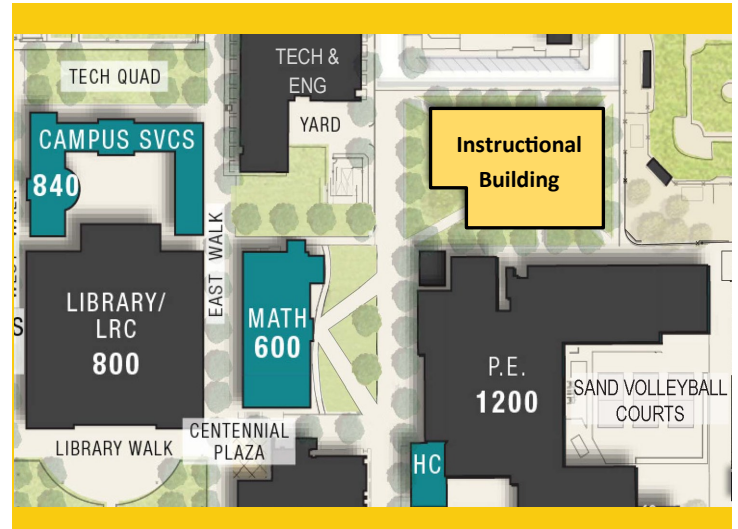
The Final Program EIR was approved by the Board of Trustees on December 12, 2017. Please note that Sherbeck Field Improvements project, which was originally included in the Initial Study and Notice of Preparation for this Program EIR, will be assessed in a separate California Environmental Quality Act (CEQA) document. These items are not funded by Measure J.



PROJECT STATUS REPORT — FULLERTON CAMPUS

NEW INSTRUCTIONAL BUILDING BIDDING

Address	321 E. Chapman Ave. Fullerton, CA 92832
Project Manager	Oscar Saghieh Fullerton College
Design-Builder	TBD
Project Delivery Method	Progressive Design-Build



Project Overview

The building will help meet campus growth needs with the goal of consolidating an instructional division into a single building. The building will accommodate more than 40 classrooms and the division office services including staff offices.

- Total Project Budget\$54,000,000
- Funding SourceMeasure J
- Project Gross Square Footage73,615 GSF
- Estimated Construction Start.....Winter 2019
- Targeted CompletionSummer 2021

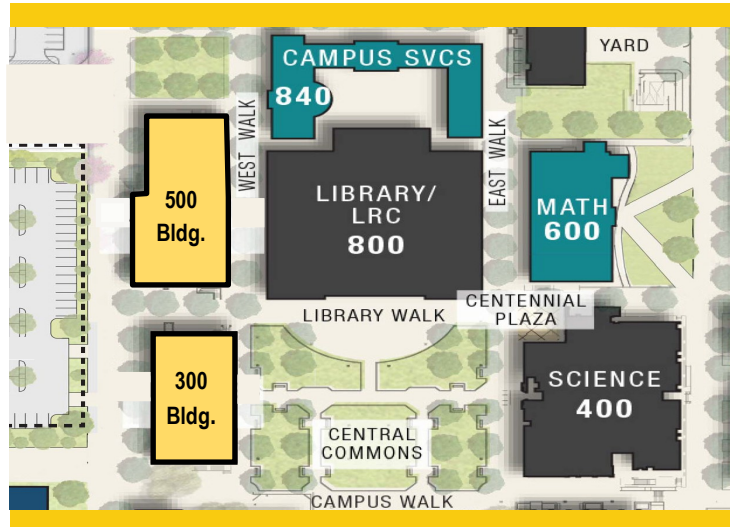


PROJECT STATUS REPORT — FULLERTON CAMPUS

RENOVATE BUILDINGS 300 & 500

DESIGN DEVELOPMENT

Address	321 E. Chapman Ave. Fullerton, CA 92832
Project Manager	Oscar Saghieh Fullerton College
Architect	R2A Architecture
Project Delivery Method	Design-Bid-Build



Project Overview

Total renovation of Buildings 300 and 500, including historic consideration of Building 300. The renovated buildings will contain general classrooms, CIS laboratories, ACT laboratories, photography laboratories, Dean and faculty offices, shared laboratories, and a lecture hall.

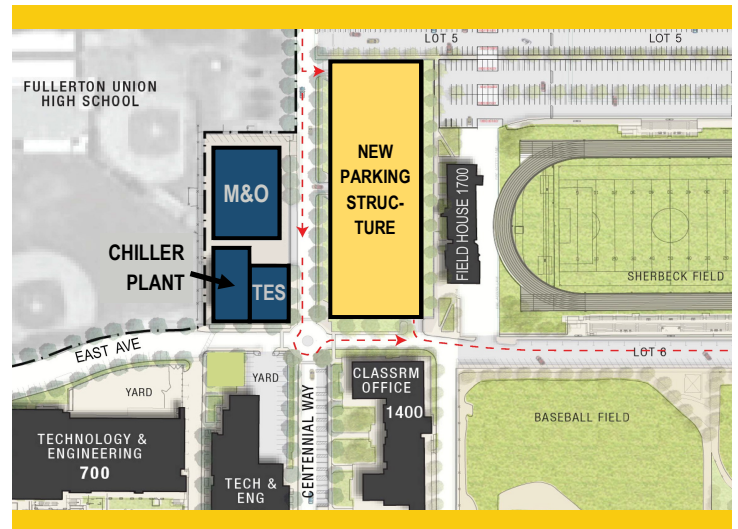
- Total Project Budget\$35,882,000
- Funding SourceMeasure J & State Capital Outlay
 - Measure J\$20,482,000
 - State Capital Outlay Funds\$15,400,000
- Project Gross Square Footage.....55,451 GSF
- Estimated Construction Start.....Summer 2021
- Targeted CompletionFall 2023



PROJECT STATUS REPORT — FULLERTON CAMPUS

NEW PARKING STRUCTURE PRE-PLANNING

Address	321 E. Chapman Ave. Fullerton, CA 92832
Project Manager	Oscar Saghieh Fullerton College
Architect	TBD
Project Delivery Method	TBD



Project Overview

New parking structure building to accommodate the need for additional parking for staff and students, with 840 spaces not exceeding 4 Levels.

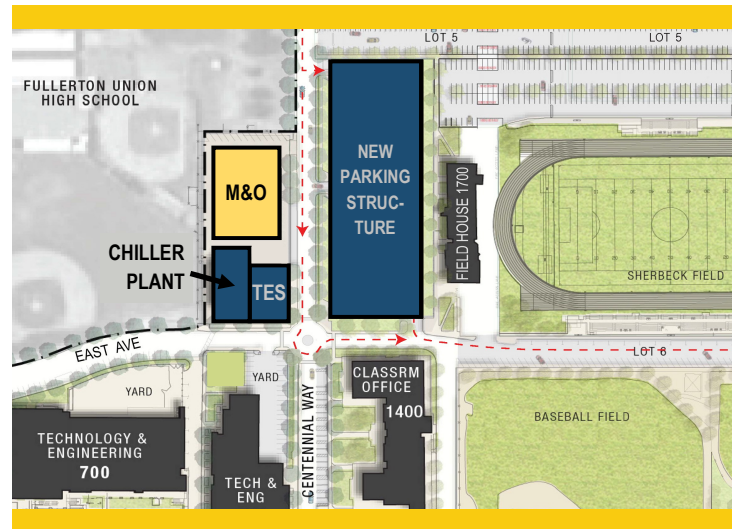
- Total Project Budget\$28,937,954
- Funding SourceMeasure J
- Project Gross Square Footage.....260,000 GSF
- Estimated Construction Start.....Fall 2022
- Targeted CompletionFall 2023



PROJECT STATUS REPORT — FULLERTON CAMPUS

NEW MAINTENANCE & OPERATION BUILDING PRE-PLANNING

Address	321 E. Chapman Ave. Fullerton, CA 92832
Project Manager	Oscar Saghieh Fullerton College
Architect	TBD
Project Delivery Method	TBD



Project Overview

The new Maintenance and Operations building will centralize all M & O services into a single building located on the main campus. The building will include trade-specific workshops for maintenance, grounds, facilities, custodial personnel while improving response time and efficiencies by locating the building on the main campus adjacent to the central plant.

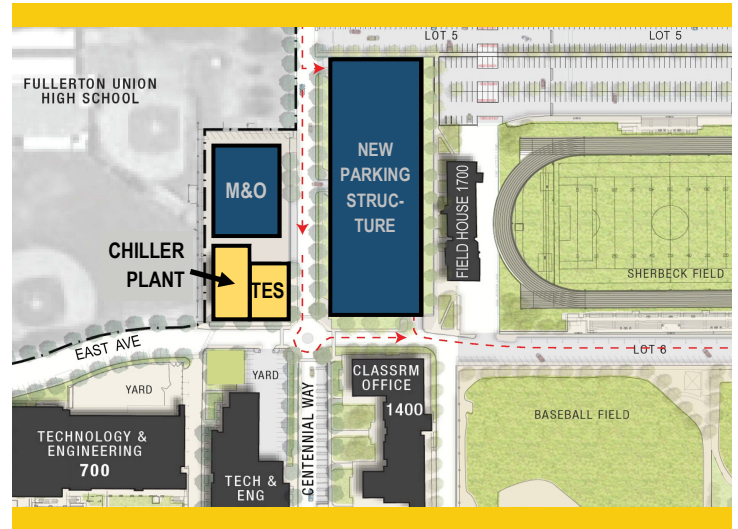
- Total Project Budget\$11,458,394
- Funding SourceMeasure J & Local Funds
 - Measure J\$3,744,828
 - Local Funds.....\$7,713,566
- Project Gross Square Footage.....22,300 GSF
- Estimated Construction Start.....Fall 2022
- Targeted CompletionFall 2023



PROJECT STATUS REPORT — FULLERTON CAMPUS

NEW TES & CHILLED WATER PLANT EXPANSION PRE-PLANNING

Address	321 E. Chapman Ave. Fullerton, CA 92832
Project Manager	Oscar Saghieh Fullerton College
Architect	TBD
Project Delivery Method	TBD



Project Overview

Expansion of Chilled Water Plant to accommodate planned new facilities and renovations along with new Thermal Energy Storage.

- Total Project Budget\$12,139,524
- Funding SourceMeasure J
- Project Gross Square Footage.....TBD
- Estimated Construction Start.....TBD
- Targeted CompletionTBD



PROJECT STATUS REPORT — FULLERTON CAMPUS

UPDATE/IMPROVE INFRASTRUCTURE

PLANNING

Address	321 E. Chapman Ave. Fullerton, CA 92832	Total Project Budget	\$31,370,654
		Total Budget Allocated	\$8,000,000
Number of Projects	1	Funding Source	Measure J

General Overview

Projects to address infrastructure improvements or upgrades throughout the Campus. Funds are allocated to projects as needs are identified.

IT Network Refresh Project Overview

DESIGN

Assessment of Campus data network infrastructure, identify necessary upgrades, and changes that will enable supporting future campus needs; specifically addressing wired, wireless, voice, and video networks. Design of a new network will account for the District’s needs specific to logical infrastructure for the next 10 years. Physical infrastructure will also account for the District’s needs for the next 20 years. The scope includes replacing network core switches, provide a more responsive support structure, preparing for cloud computing, and adaptation of voice over IP systems across the District.

- Project Budget\$8,000,000
- Funding SourceMeasure J & Capital Outlay Funds
- Project Delivery MethodTBD
- Architect.....Shandam Consulting
- Estimated Construction Start.....TBD
- Targeted CompletionTBD



PROJECT STATUS REPORT — FULLERTON CAMPUS

UPDATES ON CAMPUS PROJECTS - FULLERTON COLLEGE

New Instructional Building

- RFP/RFQ was advertised on November 27th, 2017. Proposals for Design-Build Entity were submitted on January 19th, 2018. The following are the design-build teams:

BNBuilders, Inc. * Roesling Nakamura Terada Architects, Inc.	Balfour Beatty R2A Architecture	Bernards Bros. HMC Architects	Harper Construction * DLR Group
Kemp Bros. TSK Architects	Rudolph & Sletten * NAC Architecture	Stronghold Engineering, Inc. Ravatt, Albrecht & Associates, Inc.	Tilden-Coil Constructors * HPI Architecture

- First phase of TES & Chilled Water Plant Expansion is part of the criteria documents for this project. Expansion will address additional demand derived from the operations of this new building.
- Selection Committee convened on February 5, 2017 at which four teams were selected as finalists, denoted by an asterisk (*) on the table above. Interviews will take place on February 22nd, 2018.
- Notice of Intent to Award is scheduled to be issued on February 26th, 2018.
- Schematic Design phase - Target start at the end of May 2018.

Renovate Buildings 300 & 500

- Space programming phase and Schematic Design were completed in January 2018. Design Development started with a target completion by June 2018.
- March 1st, 2018 has been set up as a deadline by the California Community Colleges Chancellor's Office to submit drawings for review.
- DSA Structural Design Criteria meeting was held on January 24, 2018 with R2A Architecture and Rodriguez Engineering. A discussion on general scope of work and project funding took place. R2A Architecture is preparing a cost comparison to ensure the current project scope of work does not exceed the 50% cost of replacement rule that would trigger extensive seismic upgrades of the structures to current building code.
- Dovetail was selected to provide preliminary fixture, furniture & equipment coordination services. A MEPD report and notated building plans will be submitted to the College upon completion in April 2018.
- Sewer line connecting Building 500 to city sewer on Lemon Drive has been identified for potential necessary replacement. Extent of scope of work will be addressed using Scheduled Maintenance funds.



UPDATES ON CAMPUS PROJECTS - FULLERTON COLLEGE (Continued)

New Parking Structure

- Evaluating Design-Build project delivery method.
- Construction will not start until renovation of 300 & 500 Buildings has been completed.
- Target design commencement in conjunction with M&O Building - Fall 2021.

New Maintenance & Operations Building

- Target design commencement in conjunction with New Parking Structure - Fall 2021.

New TES & Chilled Water Plant Expansion

- First phase of TES & Chilled Water Plant Expansion is part of the criteria documents for the New Instructional Building. Expansion will address additional demand derived from the operations of this new building.
- RFP/RFQ was advertised on November 27th, 2017. Mandatory Pre-Proposal meeting took place on December 11th, 2017. Proposals are due on January 12th, 2018.
- Selection Committee will convene between January 22nd and February 7th, 2018.
- Notice of Intent to Award is scheduled to be issued on February 26th, 2018.
- Schematic Design phase - Target start at the end of May 2018.

Update / Improve Infrastructure

IT Network Refresh Project

- Shandam Consulting started design on October 16th, 2017, with completion in March 2018.
- The design process is not funded by Bond Measures X or J. However, the construction and implementation phase will be bond-funded by Measure J. Equipment will be owner furnished, owner installed.



Intentionally Left Blank

AERIAL VIEW — ANAHEIM CAMPUS

CAMPUS PROJECTS



10th Floor Buildout
[Construction]



7th Floor Buildout
[Construction]

IT Network Refresh
(Throughout Campus)
[Design]



PROJECT STATUS REPORT — ANAHEIM CAMPUS

7th AND 10th FLOORS BUILDOUT CONSTRUCTION

Address	1830 W. Romneya Dr. Anaheim, CA 92801
Project Manager	Rick Williams NOCCCD
Architect	R²A Architecture
General Contractor	Paul C. Miller Construction Co.
Project Delivery Method	Design - Bid - Build
DSA Application A#	04-115733



Project Overview

The 7th floor remodels will accommodate NOCE’s needs for assessment centers, while the 10th floor will accommodate the District’s Vice Chancellor, Educational Services & Technology Department.

- Total Project Budget\$6,038,776
- Funding SourceMeasure X and Measure J
 - Measure J\$2,151,359
 - Measure X\$3,887,417
- Project Gross Square Footage.....19,630 GSF (7th & 10th Floors)
- Construction StartJanuary 22, 2018
- Targeted Construction CompletionJanuary 2019
- Targeted Project Completion.....April 2019

PROJECT STATUS REPORT — ANAHEIM CAMPUS

5th FLOOR CTE LABORATORY AND 2ND FLOOR ROOM 215 DSA REVIEW

Address	1830 W. Romneya Dr. Anaheim, CA 92801
Project Manager	Cora Baldovino NOCCCD
Architect	R²A Architecture
General Contractor	TBD
Project Delivery Method	Design - Bid - Build
DSA Application A#	04-116694



Project Overview

The 5th floor area remodels will accommodate a new laboratory and instructional space for the Career Technical Education program. The 2nd floor area tenant improvements for will convert Testing Room 215 into three new offices to be used by the Student Success and Support Program (SSSP) Counseling.

- Total Project Budget\$460,000
- Funding SourceMeasure J
- Project Gross Square Footage.....1,765 GSF
 - 5th Floor CTE Laboratory.....1,382 GSF
 - 2nd Floor Counseling Office Room 215 TI383 GSF
- Estimated Construction Start.....April 2018
- Targeted Construction CompletionJuly 2018
- Targeted Project Completion.....August 2018



PROJECT STATUS REPORT — ANAHEIM CAMPUS

UPDATE/IMPROVE INFRASTRUCTURE

PLANNING

Address	1830 W. Romneya Dr. Anaheim, CA 92801	Total Project Budget	\$1,766,540
		Total Budget Allocated	\$1,000,000
Number of Projects	1	Funding Source	Measure J

General Overview

Projects to address infrastructure improvements or upgrades throughout the Campus. Funds are allocated to projects as needs are identified.

IT Network Refresh Project Overview

DESIGN

Assessment of Campus data network infrastructure, identify necessary upgrades, and changes that will enable supporting future campus needs; specifically addressing wired, wireless, voice, and video networks. Design of a new network will account for the District’s needs specific to logical infrastructure for the next 10 years. Physical infrastructure will also account for the District’s needs for the next 20 years. The scope includes replacing network core switches, provide a more responsive support structure, preparing for cloud computing, and adaptation of voice over IP systems across the District.

- Project Budget\$1,000,000
- Funding SourceMeasure J & Capital Outlay Funds
- Project Delivery MethodTBD
- Architect.....Shandam Consulting
- Estimated Construction Start.....TBD
- Targeted CompletionTBD



PROJECT STATUS REPORT — ANAHEIM CAMPUS

UPDATES ON CAMPUS PROJECTS - ANAHEIM CAMPUS

7th and 10th Floors Buildout

- Paul C Miller Construction Co. started construction on January 22nd, 2018. Phase I includes tenant improvements for the 7th floor. Construction is expected to be completed in Summer 2018.
- Following the completion of Phase I, relocation services will move personnel currently located in the 10th floor to allow for Phase II to start. It is anticipated for the second phase to start in late Summer 2018.
- Ninyo and Moore, the Laboratory of Record (LOR); and Vital Inspection Services the Inspector of Record (IOR) have been awarded contract to perform the described functions for this project.
- RFP for Commissioning Agent (CxA) for the Anaheim Campus was released to firms part of the district pool. Proposals from the following companies were received.
 - Glumac
 - P2S Engineering
 - tk1sc
 - CBRE / Heery
 - Cadmus
 - Kitchell
 - TMCx Solutions
- CBRE/Heery was selected as the lowest responsible and responsive bidder. Selection to award contract was presented to, and approved by, the Board of Trustees on January 23, 2018.

5th Floor CTE Laboratory and 2nd Floor Counseling Office Room 215 TI

- DSA intake meeting took place on December 1st. Review of plans started on the second week of December. Back-check comments have been received and addressed at a Back-check appointment between Architect-of-Record and DSA during the last week of January.
- Approval of Construction Documents and Specifications is anticipated by mid-February.
- Pre-qualification for general contractors for district-wide projects over \$175,001 is underway. Pre-qualification deadline was January 16th, 2018. 36 firms submitted questionnaire packages. The evaluation of questionnaires resulted in a pool of qualified General Contractors for the District.
- A RFP will be released to the District's General Contractor Pool once DSA provides final approval of the construction drawings.

Update / Improve Infrastructure

IT Network Refresh Project

- Shandam Consulting started design on October 16th, 2017, with completion in March 2018.
- The design process is not funded by Bond Measures X or J. However, the construction and implementation phase will be bond-funded by Measure J. Equipment will be owner furnished, owner installed.



Intentionally Left Blank

FINANCIAL REVIEW

- Capital Projects Update
- Estimated Project Budgets
- 90-Day Look Ahead Schedule



CAPITAL PROJECT UPDATES

**North Orange County Community College District
Measure J
Capital Projects Update
January 31, 2018**

Bond Authorization:

Bond Authorization	574,000,000	100.00%
Bonds Sold - Series A	100,000,000	17.42%
Available Principal Amount of Bonds	474,000,000	82.58%

Bond Funding Sources (Budget):

		Actual Received	Remaining Balance
Bond Authorization	574,000,000	100,000,000	474,000,000
Estimated Net Interest Earnings	3,600,000	1,187,838	2,412,162
Totals	577,600,000	101,187,838	476,412,162

Cost Status:

Campus	Total Budget	%	Actual Expenses to Date	Remaining Balance
Anaheim Campus	17,007,800	2.94%	64,031	16,943,769
Cypress Campus	225,921,200	39.11%	4,084,893	221,836,307
Fullerton Campus	311,126,400	53.87%	331,258	310,795,142
District Expenses				
• Program Management	20,000,000	3.46%	1,630,960	18,369,040
• Bond Issuance Cost	3,544,600	0.61%	1,187,838	2,356,762
Totals	577,600,000	100.00%	7,298,980	570,301,020



ESTIMATED PROJECT BUDGETS

CYPRESS CAMPUS

CURRENT PROJECTS

ESTIMATED PROJECT BUDGET—CYPRESS

CURRENT PROJECTS	Measure J Budget	Measure J Expenses	Balance
New Science, Engineering, and Mathematics Building	\$ 94,783,786	\$ 3,015,663	\$ 91,768,123
New Veterans' Resource Center & Student Activities Center Expansion	\$ 13,500,000	\$ 682,772	\$ 12,817,228
Veterans' Memorial Bridge and Tribute Garden	\$ 100,800	\$ -	\$ 100,800
Central Plant TES	\$ -	\$ -	\$ -
Fine Arts Capital Improvement	\$ 16,764,338	\$ -	\$ 16,764,338
Update/Improve Infrastructure	\$ 16,199,708	\$ -	\$ 16,199,708
Update/Improve Infrastructure (SEM)	\$ 2,138,124	\$ -	\$ 2,138,124
Update/Improve Infrastructure (IT)	\$ 6,000,000	\$ -	\$ 6,000,000
Planning (Non Project Specific)	\$ 520,000	\$ 101,963	\$ 418,037
Library-Learning Resource Center Expansion	\$ 15,000,000	\$ 38,665	\$ 14,961,335
Swing Space Projects	\$ 3,236,521	\$ 245,830	\$ 2,990,691
Mass Communications & Security Systems Upgrade	\$ 4,324,385	\$ -	\$ 4,324,385
Mass Communications & Security Systems Upgrade (SEM)	\$ 324,115	\$ -	\$ 324,115
Pool Restoration and Upgrade	\$ 4,876,000	\$ -	\$ 4,876,000
Gym I/Gym II Restoration and Restrooms	\$ 4,837,500	\$ -	\$ 4,837,500
Gateway Phase 1	\$ 5,810,000	\$ -	\$ 5,810,000
Under Piazza & Stairwell Restoration	\$ 1,963,800	\$ -	\$ 1,963,800
Tech I/Tech III Capital Improvements	\$ 27,645,342	\$ -	\$ 27,645,342
Athletic Field Realignment/Entry Revisions/Parking Lot Improvements	\$ 7,896,781	\$ -	\$ 7,896,781
SUB TOTAL	\$ 225,921,200	\$ 4,084,893	\$ 221,836,307



ESTIMATED PROJECT BUDGETS

FULLERTON CAMPUS

CURRENT PROJECTS

ESTIMATED PROJECT BUDGET—FULLERTON

CURRENT PROJECTS	Measure J Budget	Measure J Expenses	Balance
New Instructional Building	\$ 54,000,000	\$ 36,685	\$ 53,963,315
Renovate Buildings 300 & 500	\$ 20,482,000	\$ 106,242	\$ 20,375,758
New Parking Structure	\$ 28,937,954	\$ -	\$ 28,937,954
New M & O Building	\$ 3,744,828	\$ -	\$ 3,744,828
New TES & Chilled Water Plant Expansion	\$ 12,139,524	\$ 68,070	\$ 12,071,455
New Horticulture/Lab School/STEM Lab	\$ 23,817,288	\$ -	\$ 23,817,288
Update/Improve Infrastructure	\$ 23,370,654	\$ -	\$ 23,370,654
Update/Improve Infrastructure (IT)	\$ 8,000,000	\$ -	\$ 8,000,000
Planning (Non Project Specific)	\$ 595,000	\$ 120,261	\$ 474,739
New Performing Arts Complex—Phase 1	\$ 16,133,000	\$ -	\$ 16,133,000
New Welcome Center & Lot C West	\$ 36,564,000	\$ -	\$ 36,564,000
New Performing Arts Complex—Phase 2	\$ 12,409,153	\$ -	\$ 12,409,153
Demolish Buildings 1100, 1300 and 2300	\$ 2,182,000	\$ -	\$ 2,182,000
Demolish Building 2000	\$ 1,108,000	\$ -	\$ 1,108,000
Renovate Building 600	\$ 6,739,100	\$ -	\$ 6,739,100
Renovate Building 840 Campus Services	\$ 7,878,400	\$ -	\$ 7,878,400
Renovate Health Center	\$ 1,328,800	\$ -	\$ 1,328,800
Renovate Building 1000 Fine Arts Gallery	\$ 23,468,500	\$ -	\$ 23,468,500
Renovate Faculty Lounge & Offices	\$ 6,212,250	\$ -	\$ 6,212,250
Renovate Wellness Center	\$ 2,534,400	\$ -	\$ 2,534,400
Landscape & Hardscape Improvements	\$ 3,840,000	\$ -	\$ 3,840,000
Renovate Building 3100	\$ 2,639,340	\$ -	\$ 2,639,340
Demolish Building 1901-04, 1956-60, 3000	\$ 1,333,000	\$ -	\$ 1,333,000
Parking Lot Improvements at Building 3000	\$ 1,999,500	\$ -	\$ 1,999,500
Renovate Building 2100	\$ 8,277,500	\$ -	\$ 8,277,500
Demolish Buildings 2200 & 3104	\$ 1,392,209	\$ -	\$ 1,392,209
SUB TOTAL	\$311,126,400	\$331,258	\$310,795,142



ESTIMATED PROJECT BUDGETS

ANAHEIM CAMPUS

CURRENT PROJECTS

ESTIMATED PROJECT BUDGET—ANAHEIM

CURRENT PROJECTS	Measure J Budget	Measure J Expenses	Balance
Reactivate 1st Floor Warehouse Areas for Storage	\$ 202,000	\$ -	\$ 202,000
7th and 10th Floors Buildout	\$ 2,151,359	\$ -	\$ 2,151,359
5th Floor CTE & 2nd Floor Room 215	\$ 460,000	\$ 64,031	\$ 395,969
Repurpose Childcare	\$ 1,246,200	\$ -	\$ 1,246,200
Second Floor Tenant Improvements	\$ 835,000	\$ -	\$ 835,000
Outdoor Patio Remodel	\$ 1,382,500	\$ -	\$ 1,382,500
Fourth Floor Improvements	\$ 218,000	\$ -	\$ 218,000
Update/Improve Infrastructure	\$ 766,540	\$ -	\$ 766,540
Update/Improve Infrastructure (IT)	\$ 1,000,000	\$ -	\$ 1,000,000
Planning (Non Project Specific)	\$ 440,000	\$ -	\$ 440,000
Student Lounge	\$ 222,200	\$ -	\$ 222,200
Upper Parking Lot Remodel	\$ 1,104,500	\$ -	\$ 1,104,500
Develop Interior and Exterior Signage	\$ 313,800	\$ -	\$ 313,800
Enliven Corridors/Develop Areas for Student Collaboration	\$ 888,800	\$ -	\$ 888,800
Develop South Entry Plaza	\$ 816,800	\$ -	\$ 816,800
Develop East Entry Plaza	\$ 413,200	\$ -	\$ 413,200
Remove Planters/Create Japanese Rock Garden	\$ 309,901	\$ -	\$ 309,901
Reconfigure Parking Lots	\$ 2,099,000	\$ -	\$ 2,099,000
Develop Drop-Off Plaza at Romneya Drive	\$ 1,069,000	\$ -	\$ 1,069,000
Develop Intersection at Romneya & Coronet	\$ 1,069,000	\$ -	\$ 1,069,000
SUB TOTAL	\$ 17,007,800	\$ 64,031	\$ 16,943,769



ESTIMATED PROJECT BUDGETS

DISTRICT

ESTIMATED PROJECT BUDGET—DISTRICT

DISRICT WIDE EXPENSE	Measure J Budget	Measure J Expenses	Balance
Program Management Fees	\$ 20,000,000	\$ 1,630,960	\$ 18,369,040
Bond Issuance Cost	\$ 3,544,600	\$ 1,187,838	\$ 2,356,762
SUB TOTAL	\$ 23,544,600	\$ 2,818,798	\$ 20,725,802



NORTH ORANGE COMMUNITY COLLEGE DISTRICT
CYPRESS - FULLERTON - ANAHEIM (SCE)
90-DAY LOOK AHEAD SCHEDULE
 (02-01-18 TO 04-30-18)

	February			March			April			Comments			
	6	13	20	27	6	13	20	27	3		10	17	24
GENERAL													
NOCCCD Board Meetings													
COC Meetings													
Bi-Monthly DSA Meeting													March 7th
Bond Program Management Team Mtgs.													April Meetings are to be Determined
Anaheim - Campus Coordination Meeting													April Meetings are to be Determined
Fullerton - Campus Coordination Meeting													April Meetings are to be Determined
PLANNING													
CYPRESS													
Bidding for Construction Scope of Work Lots 4 & 5													In Progress
ANAHEIM													
General Contractors RFB for 5th/2nd Floor													Complete - District-Wide General Contractor Pool
FULLERTON													
Planning Renovate Buildings 300 & 500													Complete
Re-Prioritize Initial Projects to Include C/W Plant & TES													In Progress
DESIGN + CONSTRUCTION													
DESIGN PHASE													
CYPRESS													
Construction Documents for SEM													In Progress, Target Completion March 14, 2018
Construction Documents for New VRC/SAC													In Progress, Target Completion March 14, 2018
Reconfigure Parking/SEM Roof Repairs Design													In Progress
Gym II Reconfiguration for SAC Swing Space													Target completion Summer 2018
Demolition at Lots 4 & 5													Target completion February 22, 2018
FULLERTON													
Preliminary Plans for Renovate Buildings 300 & 500													Target Completion by end of February 2018
Design Development for Renovate Buildings 300 & 500													In Progress
RFQ/RFB for New Instructional Building Design-Build Entity													Target Completion February 2018
New Instructional Building Design-Build Selection to BOT													Expected Approval on March 27, 2018 Meeting
ANAHEIM (SCE)													
INFORMATION TECHNOLOGY NETWORK REFRESH													
Design for Network Refresh Stages I & II *													Stage I to be completed by February 2018
Final Report / Design Completion *													To be completed by March 31, 2018
DSA PHASE													
Cypress - New SEM and VRC/SAC													Submittal Anticipated for March 15, 2018
Anaheim - 5th Floor CTE and 2nd Floor Room 215													Approval Anticipated by end of February 2018
CONSTRUCTION PHASE													
7th and 10th Floor Buildout Mobilization & Pre-Construction													Complete
7th and 10th Floor Buildout Phase I Construction													In Progress - Target Completion June 16, 2018
CLOSE-OUT PHASE													

Intentionally Left Blank



March 2018

1830 W. Romneya Dr. Anaheim, CA 92801