

March 2021



CAPITAL PROJECTS REPORT to the

Citizens' Oversight Committee

MAAS

Intentionally Left Blank

TABLE OF CONTENTS

Active Project Status Report

Cypress Campus

Campus Aerial View	2
New Science, Engineering, and Mathematics Building	3
New Veterans' Resource Center & Student Activities Center Expansion	4
Veterans' Memorial Bridge, Plaza, & Tribute Garden	5
Pond Refurbishment.....	6
Athletic Field Realignment - Baseball Field Improvements.....	7
Fine Arts Building Renovation	8
Update / Improve Infrastructure.....	9
Mass Communication & Security Systems Upgrade	10
Updates on Campus Projects - Cypress College	11-15

Fullerton Campus

Campus Aerial View	16
Greenhouse Replacement	17
New Instructional Building	18
Central Plant Replacement & Expansion	19
Renovate Buildings 300 & 500	20
New Maintenance & Operation Building	21
Chapman / Newell Instructional Building.....	22
New Performing Arts Complex - Demolish Buildings 1100 and 1300	23
Update / Improve Infrastructure.....	24
Updates on Campus Projects - Fullerton College	25-31

Anaheim Campus

Campus Aerial View	32
Secondary MDF Room	33
Swing Space Projects / Interim Housing.....	34
Upper Deck Parking Lot Refurbishment.....	35
Update / Improve Infrastructure.....	36
Updates on Campus Projects - Anaheim Campus	37

Completed Projects

Cypress College	39
Fullerton College.....	40
NOCE - Anaheim Campus & District Offices.....	41

Financial Review

<i>Capital Project Updates - Measure J</i>	43
Estimated Project Budgets & Purchase Orders Over \$10,000	45-51
Cypress Campus	45
Fullerton Campus	47
Anaheim Campus	49
District	51
90-Day Look Ahead Schedule	52-53

Active Project Status Report

Campus Projects

- Cypress
- Fullerton
- Anaheim and District Offices



AERIAL VIEW — CYPRESS CAMPUS PROJECTS



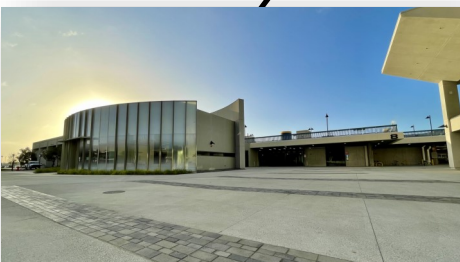
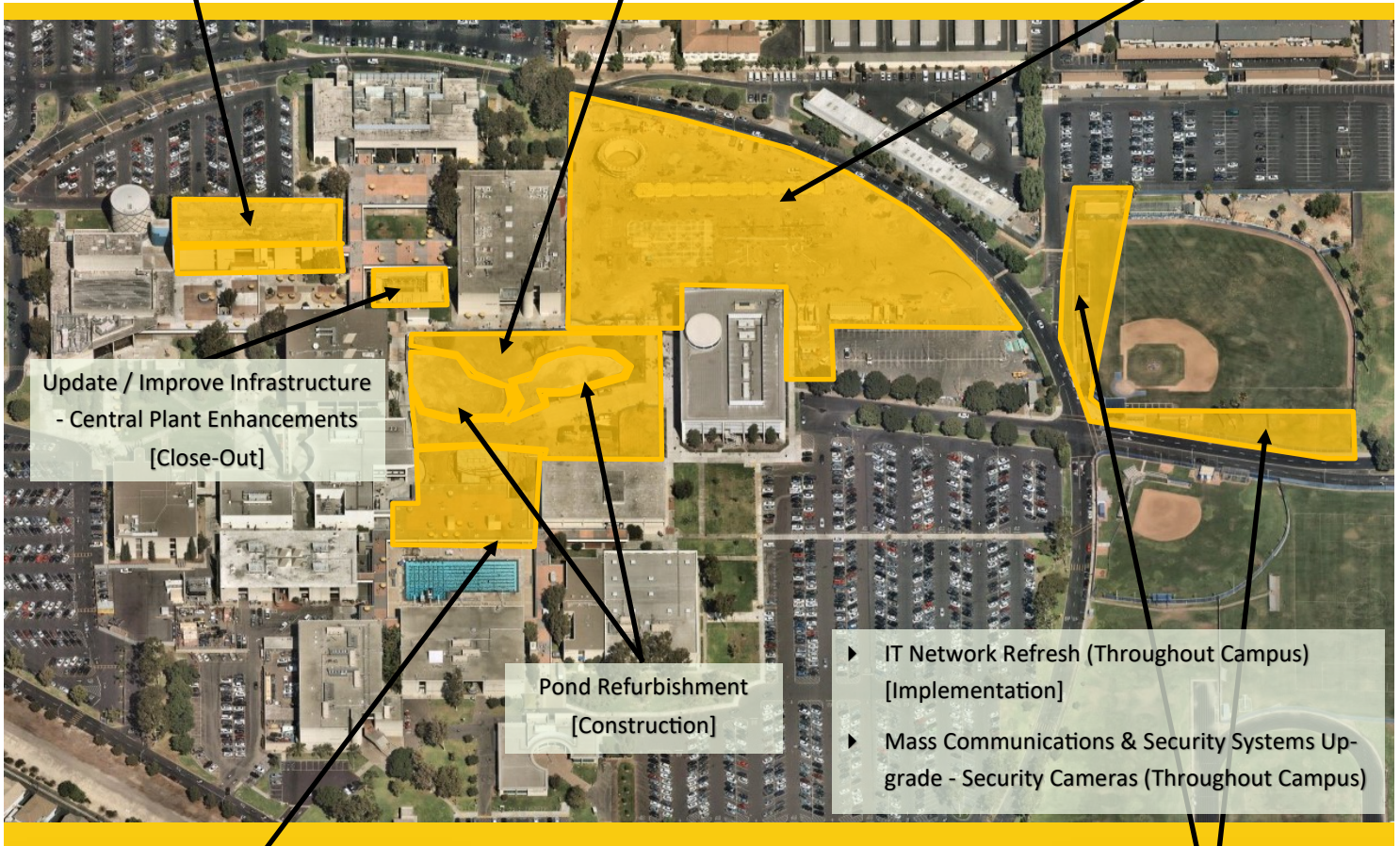
Fine Arts Building Renovation
[Design - 100% Schematic Design]



Veterans' Memorial Bridge,
Plaza, & Tribute Garden
[Construction]



New Science, Engineering
and Mathematics Building
[Construction]



New Veterans' Resource Center &
Student Activities Center Expansion
[Construction]

Athletic Field Realignment - Baseball
Field Improvements
[Close-Out]



PROJECT STATUS REPORT — CYPRESS CAMPUS

NEW SCIENCE, ENGINEERING, AND MATHEMATICS BUILDING

CONSTRUCTION

Address	9200 Valley View St. Cypress, CA 90630
Project Manager	Michael Zari Cypress College
Architect	LPA, Inc.
Construction Manager at Risk	Sundt Construction, Inc.
Project Gross Square Footage	106,023 GSF
DSA Application A#	04-117024



Project Overview

High priority project to increase the efficiency of the square footage and accommodation of services for Science, Engineering, and Mathematics programs with 21 lecture and 23 lab classrooms, an Immersive Digital Classroom (IDC), and an incinerator for the Mortuary Science Program.

Budget & Construction Costs

- Total Project Budget (Est.) \$101,159,163
 - New SEM Building..... \$94,322,272
 - New SEM FF&E \$3,000,000
 - Infrastructure..... \$2,801,641
 - Mass Communication \$389,637
 - Network Refresh..... \$645,883
- Funding Sources Measure J & Campus
 - Measure J (Est.) \$98,159,163
 - Campus Funds (Est. FF&E) \$3,000,000
- Construction Cost..... \$81,692,720
- Construction Percent Completion 87.2%

Schedule

- Design Start Jun. 29, 2016
- Construction Start Feb. 6, 2019
- Contractual Substantial Completion Apr. 2021
- Targeted Substantial Completion Apr. 2021
- Targeted Construction Completion..... Aug. 2021
- Targeted Academic Occupancy..... Aug. 2021

Allowances and Contingencies Status

	In Contract	Approved	%	Balance	%
CM Allowance	\$1,031,360	\$527,032	51.1	\$504,328	48.9
District Allowance	\$1,858,120	\$1,637,739	88.1	\$220,381	11.9
CM Contingency	\$1,437,988	\$779,656	54.2	\$658,332	45.8



PROJECT STATUS REPORT — CYPRESS CAMPUS

NEW VETERANS' RESOURCE CENTER & STUDENT ACTIVITIES CENTER EXPANSION CONSTRUCTION

Address	9200 Valley View St. Cypress, CA 90630
Project Manager	Michael Zari Cypress College
Architect	LPA, Inc.
Construction Manager at Risk	Sundt Construction, Inc.
Project Gross Square Footage	12,119 GSF
DSA Application A#	04-117023



Project Overview

High priority project to increase the square footage and provide new accommodation of services for the Veterans' Resource Center (VRC)/Student Activities Center (SAC) Expansion.

Budget & Construction Costs

- Total Project Budget (Est.) \$14,927,000
 - VRC/SAC Building (Est.) \$13,557,609
 - Measure J \$13,500,000
 - Campus Funds \$57,609
 - Infrastructure \$1,055,923
 - Mass Communication \$60,938
 - Network Refresh..... \$252,530
- Funding Sources..... Measure J & Campus
 - Measure J \$14,869,391
 - Campus Funds \$57,609
- Construction Cost..... \$10,273,347
- Construction Percent Completion96.2%

Schedule

- Design Start Dec. 9, 2016
- Construction Start Feb. 6, 2019
- Contractual Substantial Completion Aug. 2020
- Targeted Substantial Completion Mar. 2021
- Targeted Construction Completion..... Apr. 2021
- Targeted Academic Occupancy..... Apr. 2021

Allowances and Contingencies Status

	In Contract	Approved	%	Balance	%
CM Allowance	\$257,840	\$170,392	66.1	\$87,448	33.9
District Allowance	\$214,530	\$207,787	96.9	\$6,743	3.1
CM Contingency	\$168,797	\$125,032	74.1	\$43,765	25.9



PROJECT STATUS REPORT — CYPRESS CAMPUS

VETERANS' MEMORIAL BRIDGE, PLAZA, & TRIBUTE GARDEN CONSTRUCTION

Address 9200 Valley View St.
Cypress, CA 90630

Project Manager Michael Zari
Cypress College

Architect LPA, Inc.

Construction Manager at Risk Sundt Construction, Inc.

Project Square Footage 63,192 GSF

DSA Application A# 04-117023



Project Overview

Construction of a Veterans' Memorial Bridge (VMB), Tribute Garden, and site improvements to adjacent areas, including the Veterans' Resource Center Plaza.

Budget & Construction Costs

- Funding Sources Measure J & Local
- Total Project Budget (Est.) \$1,600,800
 - Measure J \$100,800
 - Local \$1,500,000
- Construction Cost..... \$1,284,608
- Construction Percent Completion 98.1%

Schedule

- Design Start Dec. 9, 2016
- Construction Start Feb. 6, 2019
- Contracted Substantial Completion Aug. 2019
- Targeted Substantial Completion Mar. 2021
- Targeted Construction Completion..... Mar. 2021
- Targeted Occupancy Mar. 2021

Allowances and Contingencies Status

	In Contract	Approved	%	Balance	%
CM Contingency	\$19,538	\$6,154	31.5	\$13,384	68.5



PROJECT STATUS REPORT — CYPRESS CAMPUS

POND REFURBISHMENT CONSTRUCTION

Address	9200 Valley View St. Cypress, CA 90630
Project Manager	Michael Zari Cypress College
Architect	LPA, Inc.
Construction Manager at Risk	Sundt Construction, Inc.
Project Square Footage	16,357 GSF
DSA Application A#	04-117023



Project Overview

Repairs and refurbishment of existing ponds. Replacement of pond lining and rearrangement of water features.

Budget & Construction Costs

- Funding Sources Local
- Total Project Budget (Est.) \$682,017
 - Local \$682,017
- Construction Cost..... \$603,686
- Construction Percent Completion 99.9%

Schedule

- Design Start Dec. 9, 2016
- Construction Start Feb. 6, 2019
- Contracted Substantial Completion Aug. 2019
- Targeted Substantial Completion Mar. 2021
- Targeted Construction Completion..... Mar. 2021
- Targeted Occupancy Mar. 2021

Allowances and Contingencies Status

	In Contract	Approved	%	Balance	%
CM Contingency	\$9,379	\$8,739	93.1	\$643	6.9



PROJECT STATUS REPORT — CYPRESS CAMPUS

ATHLETIC FIELD REALIGNMENT - BASEBALL FIELD IMPROVEMENTS CLOSE-OUT

Address 9200 Valley View St.
Cypress, CA 90630

Project Manager Phil Fleming
Cypress College

Architect Westberg+White, Inc.

General Contractor JRH Construction
Company, Inc

Project Square Footage 42,610 GSF

DSA Application A# 04-117630



Project Overview

The project encompasses the demolition of the existing baseball clubhouse, batting cages on the west side of the field, perimeter fencing along the south side and west side of the site and adjacent pedestrian pathways. The demolished facilities will be replaced by a modular building serving as the new baseball clubhouse, new pitching bullpen and batting cages, new site fencing with windscreen and padding, ADA-accessible parking stalls, and paths of travel along the west and south sides of the field.

Budget & Construction Costs

- Funding Sources Measure J & Local
- Total Project Budget (Est.) \$2,103,981
 - Measure J..... \$1,932,981
 - Local..... \$171,000
- Construction Cost..... \$1,828,961
- Construction Percent Completion 98.0%

Schedule

- Design Start Jul. 2018
- Construction Start Jun. 2020
- Contracted Substantial Completion Sep. 2020
- Substantial Completion Dec. 2020
- Targeted Construction Completion..... Feb. 2021
- Targeted Occupancy Feb. 2021

Allowances and Contingencies Status

	In Contract	Approved	%	Balance	%
Allowance	\$180,000	\$109,000	60.5	\$71,000	39.5



PROJECT STATUS REPORT — CYPRESS CAMPUS

FINE ARTS BUILDING RENOVATION DESIGN— 100% SCHEMATIC DESIGN

Address 9200 Valley View St.
Cypress, CA 90630

Project Manager Michael Zari
Cypress College

Architect DLR Group

Project Delivery Method CM Multi-Prime



Project Overview

The project involves the renovation of the existing 36,804 ASF in the Fine Arts Building #2. Currently, related instructional programs are dispersed throughout the Campus. Renovations will encompass functional and adequate recording arts, rehearsal and performance spaces for music instruction, spaces for student study near departmental faculty and other resources, and the reuse of existing vacant spaces currently not configured for instruction. Noise intrusion between spaces will be mitigated to minimize disruptions to instruction and music practice, and new instructional technology will be installed to support current instructional methodologies and pedagogies. The scope also replaces the existing mechanical, electrical, and plumbing systems and allocates sufficient square footages for code compliant bathrooms.

- Preliminary Total Project Budget..... \$34,897,338
- Funding Source Measure J & State Capital Outlay
 - Measure J \$16,764,338
 - State Capital Outlay Funds \$18,133,000
- Project Gross Square Footage..... 66,765 GSF
- Estimated Construction Start..... Fall 2022
- Targeted Completion Winter 2023/24



PROJECT STATUS REPORT — CYPRESS CAMPUS

UPDATE/IMPROVE INFRASTRUCTURE

VARIOUS STAGES

Address	9200 Valley View St. Cypress, CA 90630	Total Project Budget	\$24,337,832 (Measure J)
		Total Budget Allocated	\$9,919,426 (Measure J)
Number of Projects	5	Funding Source	Measure J & Capital Outlay

General Overview

Projects to address infrastructure improvements or upgrades throughout the Campus. Funds are allocated to projects as needs are identified. For infrastructure projects related to the New SEM and VRC/SAC, please refer to pages 3 and 4 of this report.

IT Network Refresh Project Overview

IMPLEMENTATION

Assessment of Campus data network infrastructure to identify necessary upgrades and changes that will enable supporting future Campus needs; specifically addressing wired, wireless, voice, and video networks. Design of a new network will account for the District's needs specific to logical infrastructure for the next 10 years. Physical infrastructure will also account for the District's needs for the next 20 years. The scope includes replacing network core switches, providing a more responsive support structure, preparing for cloud computing, and adaptation of voice over IP systems across the District. For costs related to the New SEM and VRC/SAC, please refer to pages 3 and 4 of this report.

- Project Budget..... \$8,844,543
 - Current Implementation (Measure J) \$1,972,462
 - Current Implementation (Capital Outlay) \$3,762,382
 - Upcoming Phases (Measure J) \$3,109,699
- Funding Source Measure J & Capital Outlay Funds
- Project Delivery Method California Multiple Award Schedule (CMAS)
- Design Implementation..... VectorUSA
- Architect..... Shandam Consulting
- Project Management District IS / PlanNet Consulting
- Design Implementation Start November 2019
- Targeted Completion December 2021



PROJECT STATUS REPORT — CYPRESS CAMPUS

MASS COMMUNICATION & SECURITY SYSTEMS UPGRADE

VARIOUS STAGES

Address	9200 Valley View St. Cypress, CA 90630	Total Project Budget	\$4,648,500
		Total Budget Allocated	\$705,645
Number of Projects	3	Funding Source	Measure J

General Overview

Projects to address fire alarm, mass communication, security, access control, and lockdown systems throughout the Campus. Funds are allocated to projects as needs are identified. Two projects have been completed to date related to door replacements and safety film installation. Please refer to pages 52 for additional details on completed projects. For mass communication & security systems projects related to the New SEM and VRC/SAC, please refer to pages 3 and 4 of this report.

Campus-Wide Security Systems Upgrade

PLANNING

Assessment of the Campus security system and development of security system standards. The budget below is a preliminary figure for costs related to Guidepost Solutions' scope of work development. Construction and implementation costs are estimated at \$1.7M.

- Project Budget..... \$58,670
- Funding Source Measure J
- Project Delivery Method To Be Determined
- Architect/Engineer of Record To Be Determined
- Estimated Construction Start..... To Be Determined
- Targeted Completion To Be Determined



PROJECT STATUS REPORT — CYPRESS CAMPUS

UPDATES ON CAMPUS PROJECTS - CYPRESS COLLEGE

Campus

- Construction work proceeds at the site during the current COVID-19 prevention guideline directives from the State's Governor. Sundt is following recommendations from the Centers for Disease Control (CDC) on social distancing and hygiene practices for all its employees and subcontractors. Daily temperature checks have been implemented for all employees on site.

New Science, Engineering, and Mathematics Building

- Walkway railings were installed in late November at all levels of the interior courtyard and sections along the east and west exterior elevations of the building. Glazing installation on the north and south elevations is nearing completion with a few panels pending installation, but most components of the storefront system have been secured in place. Scaffolding was dismantled in the remaining areas around the building in mid-December. On the building walkways, all temporary railing was removed and the slabs were patched and cured. Finishing concrete was poured from the third floor down to the first in early January.



New SEM Aerial Construction Progress —February 2021

- Soil compaction was completed for the pouring of fire lanes and walkways on the north side of the building adjacent to the existing SEM. The formwork was installed in mid-December and it was soon proceeded by rebar installation. Concrete was poured in the last week of the month. Work is underway at the building courtyard for hardscape activities to commence in early 2021. Hardscape components have been installed on the north side gardens and excavations of the large bioswale have commenced.
- Commissioning of building installed HVAC components continues with weekly site visits and witnessing of testing from the commissioning agent tk1sc. Commissioning activities are anticipated to conclude in April 2021.
- Casework has been installed in laboratory rooms on the first floor and is nearing completion on the second floor. Shipments for the third-floor laboratories arrived in mid-January. Ceiling bars for dropped-ceiling tiles are also installed on the first floor and underway on the second floor of the structure. Light



PROJECT STATUS REPORT — CYPRESS CAMPUS

UPDATES ON CAMPUS PROJECTS - CYPRESS COLLEGE (Continued)



New SEM Construction Progress —February 2021

fixtures are being installed in tandem replacing temporary construction fixtures.

- As of January, the trellis on the south side of the first and second floors of the building and all exterior railing has received the first coats of paint. This activity is anticipated to be complete by the end of February. Trees, shrubs, and decorative grasses were planted along the west elevation of the New SEM. Soil leveling and compaction is underway at the building's central courtyard in preparation for the placement of reinforcement bars and pouring of concrete on pedestrian circulation pathways. The pedestals for post site lighting are also in place along the west and south perimeter of the building. On

the north side of the structure, the excavation for bioswales is nearing completion. Soil compaction is also rapidly proceeding alongside the placement of hardscape features.

- In February, concrete was poured along pathways leading to the southwest entrance and stairwell to the second level of the building. Landscaping activities continue on the north side of the structure with the placement of edging to delineate compacted decomposed granite pathways and planting beds. The fitting of millwork continues on all three levels of the building.

New Veterans' Resource Center & Students Activities Center Expansion

- Appliances were delivered and installed at the VRC in December. Work continued with the installation of millwork such as the front entry counter and office spaces. Exterior lighting was installed on the new VRC. Final components for the fire alarm were also installed. The remaining punch-list items were being addressed in December.
- Completion of the facade glazing started in mid-December with the placement of remaining glass panels, and the replacement of the previously installed components with different coloration. Work is also progressing on the bi-fold glass wall along the front of the SAC. Delivery delays occurred due to COVID-19 issues with the manufacturer and supply chains. At the front lobby, the quartz wall behind the reception wall arrived on site in late December. The installation progressed in early January along with securing the desk in place. All missing ceiling tiles were installed by the end of December. The vast



PROJECT STATUS REPORT — CYPRESS CAMPUS

UPDATES ON CAMPUS PROJECTS - CYPRESS COLLEGE (Continued)

majority of furniture has been arranged in all spaces of the two buildings. The project reached substantial completion on December 20th, 2020.

- In January, mullion metal caps were installed, and finishing architectural details are secured. The storefront bi-fold doors are in place at the SAC entrance. Work on the facade in the vicinity of the doors is nearing completion. Successful fire life and safety inspections took place at the completed VRC building and SAC remodel. Similarly, commissioning of electrical components and functional test verification reached 95 % successful completion.
- Final completion for this project is anticipated to take place on March 1st following completion of work on the main desk quartz wall, desk, and additional camera installations alongside minor repairs pending to date. Work on the VRC's facade is coming to an end with the removal of protective plastics to the front entrance doors and the installation of awnings. ADA-accessible automatic door openers are in place at the entrances for the VRC and SAC.
- A rain event in late December caused water damage to the building. A hygienist company was contracted to address the cleanup and dehumidification process at the affected spaces. The construction manager and architect of record are addressing repairs to prevent additional events before project completion. The campus has gathered all pertinent documentation and is actively working with the project's insurance company for the coverage of repairs costs.



SAC Construction Progress —February 2021

Veterans' Memorial Bridge, Plaza, and Tribute Garden

- The remaining punch-list items were addressed in December. Sod was placed covering the remaining open areas of landscaping. Soil amends and mulch have also been placed in planting areas to improve water absorption and prevent run-off. And in January, all six telescope pedestal pier bases were installed in the pathway connecting the VRC and Library and Learning Resources Center (LLRC).
- Pedestals are mounted for the easy installation of equipment for the observation of celestial events.

PROJECT STATUS REPORT — CYPRESS CAMPUS

UPDATES ON CAMPUS PROJECTS - CYPRESS COLLEGE (Continued)



VRC and Pond Construction Progress — February 2021

Pond Refurbishment

- Remaining punch-list items were addressed in December. Shrubs were planted as a continuation of the existing screen around pond pumping and filtration equipment.

Athletic Field Realignment - Baseball Field Improvements

- All perimeter fencing was completed in late November inclusive of new bullpens and gates for audience stands areas. Temporary construction perimeter fencing was removed in early December. New ADA parking stalls were paved and striped to the north of the

new modular building. Concrete work has concluded around the new baseball clubhouse building and along the pedestrian paths of travel. The pavement was laid on the street connecting College Circle Drive and Lot 6.

- By the beginning of January, all major work at the site concluded with punch-list items remaining to be addressed in the upcoming weeks. Paths of travel are open to the public. Netting was attached to the bullpen areas inclusive of components with Cypress Baseball logos. As of February, the general contractor punch-list items are nearing completion. Railings for ADA-accessible ramps to the new clubhouse modular building and training bullpens were installed in mid-February.



Baseball Field Aerial Construction Progress — February 2021

Fine Arts Building Renovation

- DLR was selected as the Architect of Record for the Fine Arts Building Renovation project in early November. The selection came after the initial submittal of proposals by seven firms as part of the



PROJECT STATUS REPORT — CYPRESS CAMPUS

UPDATES ON CAMPUS PROJECTS - CYPRESS COLLEGE (Continued)

District's pre-qualified pool of architectural firms, and subsequent interview of three finalist firms by the selection committee. DLR started immediately on the validation of building programming, schematic design drawings, and swing space analysis. The current estimate for architectural fees is \$2,398,513, of which approximately 30% (\$719,544) are covered by the first BOT authorization to enter into a contract. An Amendment with the final cost for architectural fees was presented to the Board upon completion of preliminary drawings to the State in January 2021.

- DLR Group completed the programming document for the renovation of the building in December. This document is the result of collaborative open studio meetings between the building user group and the design team to serve as the roadmap for the design phases in terms of space distribution and equipment requirements. A Request for Proposal and Qualifications for Construction Manager Multi-Prime was released in early January for interested parties to submit for consideration. Responses for the Construction Manager Multi-Prime RFP were received on January 27th, 2021. Seven firms submitted packages for the District's and Campus' consideration. A selection committee is in place and the selection process proceeded in the first two weeks of February.

Update / Improve Infrastructure

IT Network Refresh Project

- The scope of work for phase II of the design implementation is in the works. Change Order No. 2 for the project was presented to the Board of Trustees on February 9th, 2021. Network switches and Uninterruptible Power Supply (UPS) units are some of the items to be included in the upcoming phase of the project.

Mass Communication & Security Systems Upgrade

Security Cameras

- Guidepost Solutions completed the scope of work development for the installation of security cameras throughout the Campus. Considerations for design solutions are underway. Construction and implementation costs are estimated at \$1.7M.



AERIAL VIEW — FULLERTON CAMPUS PROJECTS



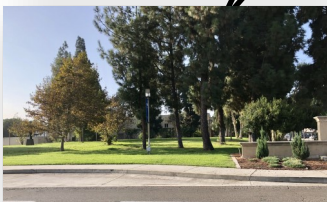
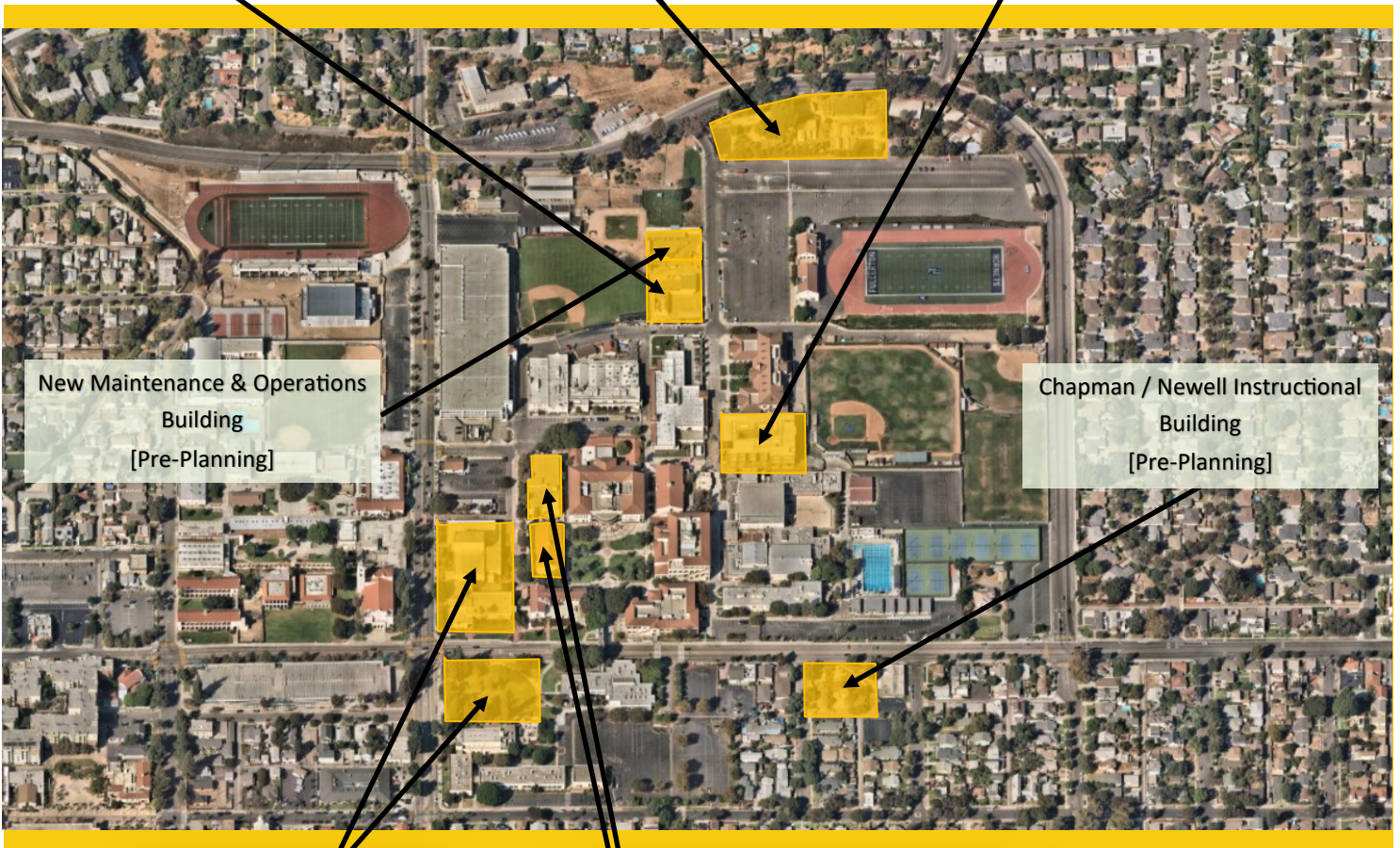
Central Plant Replacement and
Expansion
[Construction]



New Horticulture and Lab School
- Greenhouse Replacement
[Construction]



New Instructional Building
[Construction]



New Performing Arts Complex - Demolish Buildings
1100 and 1300
[Design]



Renovate Buildings 300 & 500
[Bidding]

- IT Network Refresh
(Throughout Campus)
[Implementation]



PROJECT STATUS REPORT — FULLERTON CAMPUS

GREENHOUSE REPLACEMENT CONSTRUCTION

Address	321 E. Chapman Ave. Fullerton, CA 92832
Project Manager	Larry Lara Fullerton College
Architect	Westberg + White
General Contractor	RT Contractor
Project Delivery Method	Design-Bid-Build
Project Gross Square Footage	3,853 GSF



Project Overview

Replacement of the existing 1,440 square-foot greenhouse with a new 2,880-square-foot Venlo-style greenhouse, renovations to the existing restroom facilities, and upgrading pathway accessibility to meet current ADA code requirements, and striped parking spaces within the Horticulture Complex 1600.

Budget & Construction Costs

- Funding Source Measure J & Local
- Total Project Budget \$1,562,305
 - Measure J (Est.) \$834,381
 - Local (Strong Workforce Dev.) \$727,924
- Construction Cost..... \$1,293,000
- Construction Percent Completion91.2%

Schedule

- Design Start Dec. 2019
- Construction Start Jul. 2020
- Contracted Substantial Completion Sep. 2020
- Targeted Substantial Completion Feb. 2021
- Targeted Occupancy. Mar. 2021

Allowances and Contingencies Status

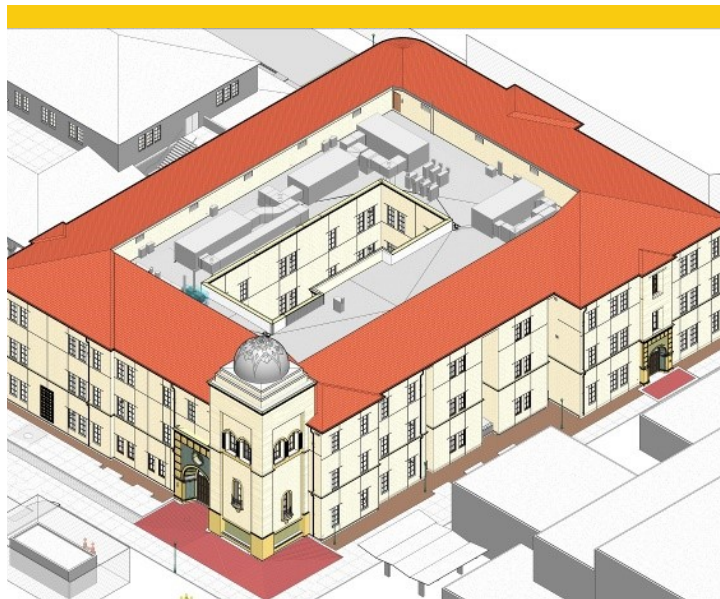
	In Contract	Approved	%	Balance	%
Allowance	\$50,000	\$22,200	42.4	\$27,800	57.6



PROJECT STATUS REPORT — FULLERTON CAMPUS

NEW INSTRUCTIONAL BUILDING CONSTRUCTION

Address	321 E. Chapman Ave. Fullerton, CA 92832
Project Manager	Oscar Saghie Fullerton College
Design-BUILDER	BN Builders, Inc. & Roesling Nakamura Terada Architects, Inc.
Project Delivery Method	Progressive Design-Build
Project Gross Square Footage	74,927 GSF
DSA Application A#	04-118108



Project Overview

The New Instructional Building (New IB) will help meet Campus growth needs with the goal of consolidating an instructional division into a single building. The building will accommodate more than 40 classrooms and the division office services including staff offices. Scope of work for this project includes the expansion of the Central Plant.

Budget & Construction Costs

- Funding Source Measure J
- Total Project Budget (Est.) \$53,588,031
 - New Instructional Building \$53,588,031
 - Network Refresh..... \$278,982
- Construction Cost..... \$41,231,023
- Construction Percent Completion48.0%

Schedule

- Design StartJun. 18, 2018
- Construction Start Feb. 12, 2020
- Contracted Substantial Completion.....Aug. 2021
- Targeted Substantial Completion Sep. 2021
- Targeted Occupancy. Oct. 2021

Allowances and Contingencies Status

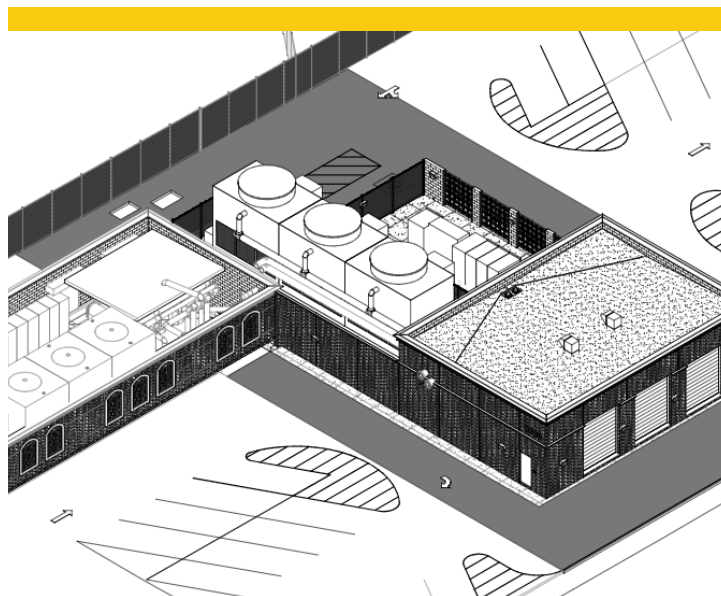
	In Contract	Approved	%	Balance	%
Construction					
Contingency	\$1,082,149	\$426,147	47.1	\$652,000	52.9
Allowance	\$1,782,043	\$763,729	42.8	\$1,018,314	57.1



PROJECT STATUS REPORT — FULLERTON CAMPUS

CENTRAL PLANT REPLACEMENT & EXPANSION CONSTRUCTION

Address	321 E. Chapman Ave. Fullerton, CA 92832
Project Manager	Oscar Saghie Fullerton College
Design-BUILDER	BN Builders, Inc. & Roesling Nakamura Terada Architects, Inc.
Project Delivery Method	Progressive Design-Build
Project Gross Square Footage	2,028 GSF
DSA Application A#	04-118525



Project Overview

Replacement and expansion of the central plant to accommodate planned new facilities and renovations and improve efficiency in servicing existing buildings. Project includes the replacement and expansion of the existing central plant to accommodate for three 600-ton high-efficiency water chillers and cooling towers.

Budget & Construction Costs

- Funding Source.....Measure J
- Total Project Budget.....\$10,600,000
Measure J (Est.).....\$10,600,000
- Construction Cost.....\$8,093,803
- Construction Percent Completion..... 50.0%

Schedule

- Design Start Jun. 18, 2018
- Construction Start Feb. 12, 2020
- Contracted Substantial Completion Jun. 2021
- Targeted Substantial Completion.....Jul. 2021
- Targeted Occupancy.....Aug. 2021

Allowances and Contingencies Status

	In Contract	Approved	%	Balance	%
Construction Contingency	\$195,037	\$13,763	7.1	\$181,274	92.9
Allowance	\$87,500	\$36,787	42.4	\$50,713	57.6



PROJECT STATUS REPORT — FULLERTON CAMPUS

RENOVATE BUILDINGS 300 & 500 BIDDING

Address 321 E. Chapman Ave.
Fullerton, CA 92832

Project Manager Oscar Saghieh
Fullerton College

Architect R2A Architecture

General Contractor TBD

Project Delivery Method Design-Bid-Build

DSA Application A# 04-118314



Project Overview

Total renovation of Buildings 300 and 500, including historic consideration of Building 300. The renovated buildings will contain general classrooms, Computer Information Systems (CIS) laboratories, Academic Computing Technologies (ACT) laboratories, photography laboratories, dean and faculty offices, shared laboratories, and a lecture hall.

- Total Project Budget\$35,830,000
- Funding SourceMeasure J & State Capital Outlay
 - Measure J\$20,482,000
 - State Capital Outlay Funds\$15,348,000
- Project Gross Square Footage.....55,451 GSF
- Estimated Construction Start.....January 2022
- Targeted CompletionSeptember 2023



PROJECT STATUS REPORT — FULLERTON CAMPUS

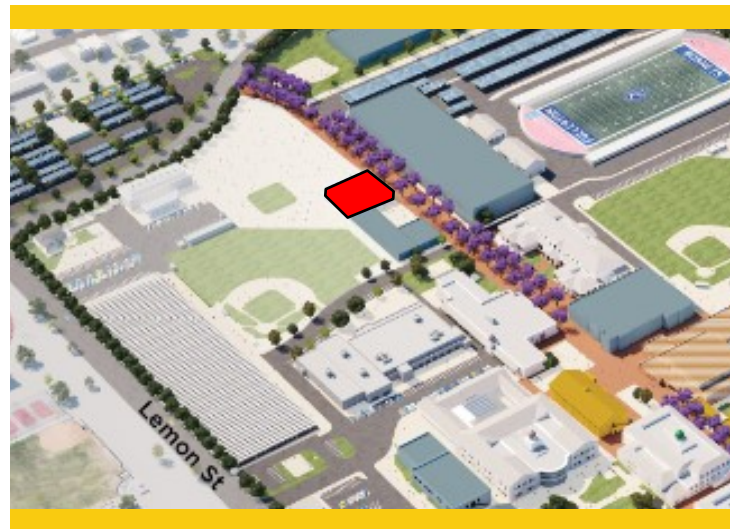
NEW MAINTENANCE & OPERATION BUILDING PRE-PLANNING

Address 321 E. Chapman Ave.
Fullerton, CA 92832

Project Manager Oscar Saghie
Fullerton College

Architect TBD

Project Delivery Method Design-Build



Project Overview

The New Maintenance and Operations Building will centralize all M & O services into a single building located on the Main Campus. The building will include trade-specific workshops for maintenance, grounds, facilities, and custodial personnel while improving response time and efficiencies by locating the building on the Main Campus adjacent to the central plant. Project is anticipated to be bundled for bidding with the Chapman / Newell Instructional Building.

- Total Project Budget\$14,758,944
- Funding SourceMeasure J & Local Funds
 - Measure J\$6,758,944
 - Local Funds.....\$8,000,000
- Project Gross Square Footage.....22,300 GSF
- Estimated Construction Start.....Winter 2022
- Targeted CompletionWinter 2023



PROJECT STATUS REPORT — FULLERTON CAMPUS

CHAPMAN / NEWELL INSTRUCTIONAL BUILDING PRE-PLANNING

Address	321 E. Chapman Ave. Fullerton, CA 92832
Project Manager	Oscar Saghie Fullerton College
Architect	TBD
Project Delivery Method	Design-Build



Project Overview

- The building at the intersections of Chapman Avenue and Newell Street will potentially provide improved facilities to Student Resources, CalWORKs, Health Services, the Veterans' Resource Center (VRC), and Instructional Programs. Project is anticipated to be bundled for bidding with the New M&O Building.
- Total Project Budget\$21,985,777
- Funding SourceMeasure J & Local Funds
 - Measure J\$21,985,777
- Project Gross Square Footage.....30,000 GSF
- Estimated Construction Start.....Winter 2022
- Targeted CompletionWinter 2023

PROJECT STATUS REPORT — FULLERTON CAMPUS

NEW PERFORMING ARTS COMPLEX - DEMOLISH BUILDINGS 1100 AND 1300

PRE-PLANNING

Address	321 E. Chapman Ave. Fullerton, CA 92832
Project Manager	Oscar Saghie Fullerton College
Architect	Pfeiffer Partners Architects, Inc.
Project Delivery Method	Design-Bid-Build



Project Overview

This project addresses the demand for the enrollments in the performing arts programs by constructing a new complex bringing music, drama, theater arts, and communication programs together into a single facility. The new building replaces outdated facilities with electrical deficiencies and outmoded configurations will take advantage of the potential use of commonly required space to improve overall utilization and flexible spaces that help programs in meeting higher demands anticipated in the near future.

- Preliminary Total Project Budget..... \$72,273,153
- Funding Source Measure J & State Capital Outlay
 - Measure J \$30,724,153
 - State Capital Outlay Funds \$41,549,000 (As Approved in FPP)
- Project Gross Square Footage..... 66,765 GSF
- Estimated Construction Start..... Summer 2023
- Targeted Completion Summer 2025



PROJECT STATUS REPORT — FULLERTON CAMPUS

UPDATE/IMPROVE INFRASTRUCTURE

VARIOUS STAGES

Address	321 E. Chapman Ave. Fullerton, CA 92832	Total Project Budget	\$31,607,054 (Measure J)
		Total Budget Allocated	\$8,496,638 (Measure J)
Number of Projects	2	Funding Source	Measure J & Capital Outlay

General Overview

Projects to address infrastructure improvements or upgrades throughout the Campus. Funds are allocated to projects as needs are identified.

IT Network Refresh Project Overview

IMPLEMENTATION

Assessment of Campus data network infrastructure to identify necessary upgrades, and changes that will enable supporting future Campus needs; specifically addressing wired, wireless, voice, and video networks. Design of a new network will account for the District's needs specific to logical infrastructure for the next 10 years. Physical infrastructure will also account for the District's needs for the next 20 years. The scope includes replacing network core switches, providing a more responsive support structure, preparing for cloud computing, and adaptation of voice over IP systems across the District. For costs related to the New Instructional Building please refer to page 18 of this report.

- Project Budget..... \$12,007,922
 - Current Implementation (Measure J) \$3,132,039
 - Current Implementation (Capital Outlay) \$4,323,904
 - Upcoming Phases (Measure J) \$4,551,979
- Funding Source Measure J & Capital Outlay Funds
- Project Delivery Method California Multiple Award Schedule (CMAS)
- Design Implementation..... VectorUSA
- Architect..... Shandam Consulting
- Project Management District IS / PlanNet Consulting
- Design Implementation Start..... November 2019
- Targeted Completion December 2021



PROJECT STATUS REPORT — FULLERTON CAMPUS

UPDATES ON CAMPUS PROJECTS - FULLERTON COLLEGE

Campus

- Construction work at active project sites proceeds during the current COVID-19 protection guideline directives from the State's Governor. BN Builders is following recommendations from the Centers for Disease Control (CDC) on social distancing and hygiene practices for all its employees and subcontractors. As mitigation measures to prevent COVID-19 outbreaks, temperature checks are being performed before personnel are walking on-site and stretch and flex. Work is being segmented in areas where personnel are asked to remain during a day's work to complete their tasks. Visitors are provided a wristband as a visible check that they have provided contact details before accessing the site or meetings related to the project.

Greenhouse Replacement



Greenhouse Replacement Construction Progress —February 2021

- In early December, exterior walls were fully framed. The assembly of the greenhouse continues with all structural roof components such as rafters, purlins, and ridges installed. Soil compaction was completed in early December for perimeter walkways and entry foyers. The formwork was placed in preparation for reinforcement bar placement and concrete pours for the new access ramp on the west side of the new structure. Punch-list items about the remodeled bathrooms were addressed. By mid-December, roof panel and ceiling vent installation started following the completion of the assembly of the interior wall and roof structures. Trenching for the installation of the domestic

water supply also began and concluded in early January. Soil compaction is underway in preparation for the placement of pavement for the approach to the new ADA ramp. Concrete was poured in these areas in late December.

- In January, the installation of polycarbonate sheets covering the walls progressed on the newly assembled greenhouse. Air circulation fans have been put in place and power connections are being established. Concrete has cured on the access ramps and walkways in the perimeter of the new structure. By the end of January, Venlo panels completed the enclosure of the space. Ventilation parts were fully installed and tested for functionality. Work is proceeding with the completion of entrance



PROJECT STATUS REPORT — FULLERTON CAMPUS

UPDATES ON CAMPUS PROJECTS - FULLERTON COLLEGE (Continued)

foyers and the installation of irrigation elements.

- In February, the enclosure of the main greenhouse structure and attached foyers was completed. Utility connections are being established. Sitework and hardscaping are pending installation on the south side of the building.

New Instructional Building



New Instructional Building Aerial Construction Progress —February 2021

- The railing for the main stairs was welded into place in late November. In early December, drywall was delivered to the site to begin construction, which remained ongoing for the duration of this reporting period. Exterior framing neared completion around the building except for the feature tower area on the southwest corner of the structure. Scaffolding was erected around the main stairwell tower. Sheathing installation occurred on the south and east elevations on the north side of the building. The framing was underway at the north entrance portal, while work on the main west entrance portal began in

mid-January. The sheathing is fully installed in the courtyard area. Lath installation started in late December. The application of a water barrier followed behind the sheathing.

- On the roof level, all pre-fabricated sections containing rafters, purlins, and ridges were installed and secured in place at the top level of the structure. Temporary roofing was installed ahead of the rainy season; meanwhile, the installation of metal decking on the roof level is underway on the west end of the structure.
- Interior framing was underway on the third level of the structure alongside the assembly of soffits throughout all other levels of the edifice. Component fitting by MEP trades in the upper levels of the building and inspections were ongoing for all trades. Insulation installation began in the hallways. The completion of the electrical panels and switchgear installation on all three levels in late December allowed for the energization of the building in late January.
- Change Order No. 01 was processed and completed on December 15, 2020. It included the design,



PROJECT STATUS REPORT — FULLERTON CAMPUS

UPDATES ON CAMPUS PROJECTS -

hardware, and cabling for additional wireless access points in concurrence with the latest District design standards for information technology. With a cost of \$278,982, it increased the current design-build contract with BN Builders and RNT Architects to \$54,221,057. This change was presented to the Board of Trustees for approval in January 2021.

- At the start of January, framing for the North and East exterior wall was underway, while the North and South entrance portals were fully framed. Work also proceeded on framing the entry portals and feature tower. Steel was assembled for the tower's cupola, which will be hoisted in place in the upcoming months. Glass Fiber Reinforced Concrete (GFRC) cast elements were placed atop the third level facade abutting the elevations and roofline of the building and the interior courtyard. Stucco paper, lath, and trimming were secured to the courtyard walls for the application of the scratch coat on these exterior elevations. Upon the completion of the moisture barriers at the end of February, stucco paper and lath will begin to appear on the southern facade of the building.
- Preparations were made for roofing membrane placement later on in February. The installation of sheathing was completed at the roof level of the structure. The rest of the outer elevations of the building were covered with sheathing and the first layers of waterproofing, while the interior courtyard activities moved on to the installation of windows. Window installation progressed on the first level of the building and reached completion in the building's courtyard. Window sill pans and other components are underway at all other openings. Fenestration related tasks will conclude by the end of February.
- Inside the building, 50% of building drywall was installed on the first floor. The second floor was approximately 80% framed and insulated. Drywall installation began in mid-January on this level. And framing was installed on the third floor. Meanwhile, the installation of plumbing valves in the third-floor bathrooms processed at a quick pace. Insulation work for classrooms was underway in January.



New Instructional Building Construction Progress —February 2021

PROJECT STATUS REPORT — FULLERTON CAMPUS

UPDATES ON CAMPUS PROJECTS - FULLERTON COLLEGE (Continued)

Soffit assembly neared completion while all of the mechanical, electrical, plumbing, and fire have passed inspections. Wall sheathing on the two elevator wells neared completion. Installation of electrical components started on the third floor.

- By the end of January, the elevator subcontractor started assembling and installing parts for the cabins. BN Builders was limited to the execution of interior work during the last week of January as a result of winter storms affecting the region. Elevator installation was underway at one of the two lift shafts. The cabins were delivered and components were assembled.

Activities are expected to migrate to the second elevator in March upon completion. Painting began on the building's first-floor interior following the finishing of drywall and taping installation at this level. Drywall was completed at the restrooms in January and tiling began in early February. Low voltage cabling installation was completed for security elements at this level as well. Both tiling and low voltage moved to the second and third levels in late February. On the second floor, drywall installation was nearing completion with the process of taping started at the beginning of February. All inspections of the installed electrical, potable water, sewer, fire alarm, and HVAC have passed at this level. Finally on the third-floor, framing reached completion for drywall placement in mid-February.

- In February, exterior rigid insulation was installed along the building facades, and GFRC forms are secured around the second-floor level. Stucco with integrated color was applied on the mechanical well walls at the roof level. Sheet metal flashing at valleys and ridges is in place and secured in preparation for the installation of roof clay tile at the reporting month. The fitting of windows throughout the building will be completed by end of February. The interior courtyard received the first two stucco layers in late February. Interior framing continues on the third floor of the structure. Rough-in installations for plumbing electrical and fire suppression are nearing the 70% completion mark. Down on the second floor, drywall will be completed by the third week of February with taping activities proceeding into early March.




New Instructional Building Construction Progress —February 2021

PROJECT STATUS REPORT — FULLERTON CAMPUS

UPDATES ON CAMPUS PROJECTS - FULLERTON COLLEGE (Continued)

Central Plant Replacement & Expansion

- In early December, waterproofing was applied to the exterior of the enclosed structure's Cement Modular Units (CMUs). And the application of fluid waterproofing on the exterior walls of the enclosed building was completed. Crown stucco molding was attached to the exterior of the building. In the electrical and cooling tower yard, chain-link fence posts and fabric were installed in mid-December.
 - Work continues on the placement of piping connecting the recently installed cooling towers to the chiller in the inside of the building. The subcontractors will soon move to establish a connection to the existing central plant piping and link to the campus loop. The installation of moisture barrier and metal lath proceeded soon after in sequence to the application of the first coats in mid-December, and final coats in early January following curing periods. In the exterior service yard, seismic bracing for cooling towers and piping is progressing.
- 
- Central Plant Construction Progress —February 2021**
- In the schedule for the end of the 2020 was the installation of the Variable Frequency Drives (VFDs) to allow for a range in operability for pumps in contrast to conventional constant speeds. The electrical yard connections were completed by late December for building energization in early January. Scaffolding was dismantled late January.
 - As of January, chilled water pumps were fully installed and fastened inside the central plant building. At the exterior service yard, electrical connections were established following a Campus-wide shutdown. Storm drain tie-ins will take place at the north and east end of the construction site later in late February. The final plaster coat has cured on the building and service yard perimeter walls with integral color incorporated. Caulking is being applied to all Glass Fiber Reinforced Concrete (GFRC) components.
 - As a result of winter storms affecting the region, BN Builders was limited to the execution of interior work only during the last week of January. In February, the assembly of chiller and cooling tower piping continues in March inside and outside the enclosed structure. The point of connection for utilities to the future M&O building is being established. Grading and sitework will start in mid-March.



PROJECT STATUS REPORT — FULLERTON CAMPUS

UPDATES ON CAMPUS PROJECTS - FULLERTON COLLEGE (Continued)

Renovate Buildings 300 & 500

- Addenda 1 and 2 were issued in mid-December to the six prequalified general contractors participating in the bid for the project. Among the responses to questions posed by the firms, an allowance for unforeseen conditions was established for \$130,000. Bids were due on February 2nd, 2021.

New Maintenance & Operations Building

- Target Construction Start in conjunction with Chapman/Newell Instructional Building- Winter 2023.
- Project budget has been revised and increased to account for construction escalation costs at the mid-point of construction. The project budget will be revised in the future close to the onset of project design.

Chapman / Newell Instructional Building

- Target Construction Start in conjunction with New M&O Building- Winter 2023.
- Project budget has been revised and increased to account for construction escalation costs at the mid-point of construction. The project budget will be revised in the future close to the onset of project design.

New Performing Arts Complex

- In late November, the selection committee for the architect of record concluded the score ranking of 14 prequalified firms part of the District pool of architects. Interviews were conducted in early November with the four finalist architecture firms from the District's shortlist of pre-qualified vendors. The top three finalists were invited for interviews in December. A 1-hour session was led by a team presentation and followed by a question and answer session to better understand the firm's experience with previous projects concerning performing arts spaces. Pfeiffer Partners Architects was selected as the architect of record for the New Performing Arts Complex.

The firm was chosen by the selection committee following interviews with the other qualified two



Future Home of the New Performing Arts Complex

PROJECT STATUS REPORT — FULLERTON CAMPUS

UPDATES ON CAMPUS PROJECTS - FULLERTON COLLEGE (Continued)

finalists with experience in performing arts spaces. Authorization to enter into the contract was presented to the Board of Trustees in January 2021. Following the selection and authorization to enter into a contract with Pfeiffer Partners Architects, a design kick-off meeting with the Building User Group, Campus administration, and the design team was held at the beginning of February. The design has commenced in earnest with a meeting every two weeks and an anticipated design overview after the first milestone.

Update / Improve Infrastructure

IT Network Refresh Project

- The scope of work for phase II of the design implementation is in the works. Change Order No. 2 for the project was presented to the Board of Trustees on February 9th, 2021. Network switches and Uninterruptible Power Supply (UPS) units are some of the items to be included in the upcoming phase of the project.



AERIAL VIEW — ANAHEIM CAMPUS PROJECTS



Secondary MDF Room
[Construction]



Upper Deck Parking Lot
Refurbishment
[Pre –Planning]

Swing Space Projects / Interim
Housing
[Pre –Planning]

▶ IT Network Refresh (Throughout Campus)
[Implementation]



PROJECT STATUS REPORT — ANAHEIM CAMPUS

SECONDARY MDF ROOM

CONSTRUCTION

Address 1830 W. Romneya Dr.
Anaheim, CA 92801

Project Manager Cora Baldovino
District

Architect Rodriguez Engineering

General Contractor Howard Ridley

Project Delivery CUPCAA

Project Gross >1,000 GSF



Project Overview

The installation of a secondary Main Distribution Frame (MDF) room will be at the northeast corner of the existing Campus Utility Plant Building mezzanine level. This facility will support communications at the Campus in case of an outage at the current MDF room. Involves new structural steel framing to support the installation of new frame racks.

- Preliminary Total Project Budget \$105,407
- Funding Source..... Measure J
 - Measure J \$105,407
- Estimated Construction Start November 2020
- Targeted Completion March 2021



PROJECT STATUS REPORT — ANAHEIM CAMPUS

SWING SPACE PROJECTS / INTERIM HOUSING

PRE-PLANNING

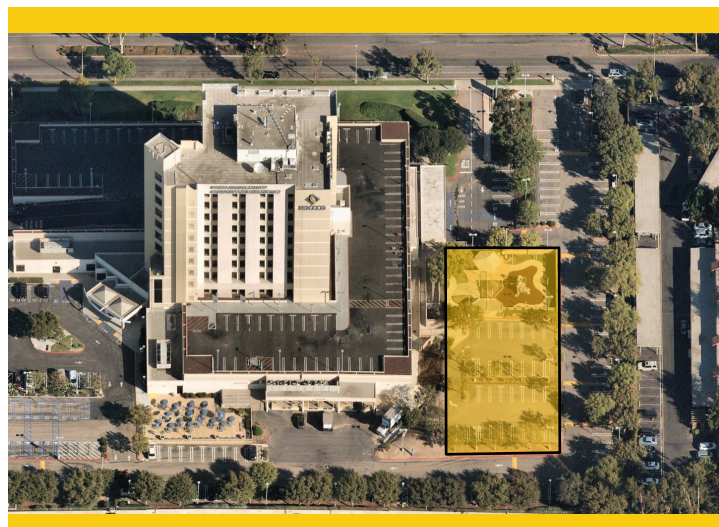
Address 1830 W. Romneya Dr.
Anaheim, CA 92801

Project Manager Richard Williams
District Director
Facilities, Planning, and
Construction

Architect TBD

Project Delivery TBD

Method



Project Overview

As a result of the upcoming project to complete extensive repairs due to water intrusion at the Upper Deck Parking Lot, there is a need to temporarily relocate classrooms and facilities located on the 1st floor of the Anaheim-NOCE Campus before the start of construction activities. These new temporary modular buildings will allow for NOCE's instruction activities to continue during the repairs to the existing structure. Included are the design, assembly, construction, rent, and dismantling of 12 modular classrooms and associated facilities. This project is contingent on approval of State funds for the Upper Deck Parking Lot Refurbishment.

- Total Project Budget\$2,000,000
- Funding SourceMeasure J
- Project Gross Square Footage.....TBD
- Estimated Construction Start.....Winter/Spring 2022
- Targeted Construction CompletionSummer 2022
- Temporary Structures Anticipated DismantlementFall 2024



PROJECT STATUS REPORT — ANAHEIM CAMPUS

UPPER DECK PARKING LOT REFURBISHMENT PRE-PLANNING

Address	1830 W. Romneya Dr. Anaheim, CA 92801
Project Manager	Richard Williams District Director Facilities, Planning, and Construction
Architect	TBD
Project Delivery Method	TBD



Project Overview

Based on a recent study on water intrusion completed in late 2018 by R2A Architecture in collaboration with KPFF, Rodriguez Engineering, Inc. and Allana Buick & Bers, Inc. several extensive repairs are needed to mitigate and limit the points of water intrusion through the upper deck parking lot surrounding the Anaheim tower. This project is contingent on approval of State funds.

- Total Project Budget\$10,913,000
- Funding SourceMeasure J & State
 - Measure J\$2,183,000
 - State\$8,730,000
- Project Gross Square Footage.....61,952 ASF
- Estimated Construction Start.....Summer 2022
- Targeted CompletionSpring 2024



PROJECT STATUS REPORT — ANAHEIM CAMPUS

UPDATE/IMPROVE INFRASTRUCTURE

IMPLEMENTATION

Address	1830 W. Romneya Dr. Anaheim, CA 92801	Total Project Budget	\$1,766,540 (Measure J)
		Total Budget Allocated	\$1,105,407 (Measure J)
Number of Projects	1	Funding Source	Measure J & Capital Outlay

General Overview

Projects to address infrastructure improvements or upgrades throughout the Campus. Funds are allocated to projects as needs are identified.

IT Network Refresh Project Overview

BIDDING

Assessment of Campus data network infrastructure to identify necessary upgrades, and changes that will enable supporting future Campus needs; specifically addressing wired, wireless, voice, and video networks. Design of a new network will account for the District's needs specific to logical infrastructure for the next 10 years. Physical infrastructure will also account for the District's needs for the next 20 years. The scope includes replacing network core switches, providing a more responsive support structure, preparing for cloud computing, and adaptation of voice over IP systems across the District.

- Project Budget..... \$5,432,152
 - Current Implementation (Measure J) \$754,209
 - Current Implementation (Capital Outlay) \$4,432,152
 - Upcoming Phases (Measure J) \$245,791
- Funding Source Measure J & Capital Outlay Funds
- Project Delivery Method California Multiple Award Schedule (CMAS)
- Design Implementation..... VectorUSA
- Architect..... Shandam Consulting
- Project Management District IS / PlanNet Consulting
- Design Implementation Start..... November 2019
- Targeted Completion December 2021



PROJECT STATUS REPORT — ANAHEIM CAMPUS

UPDATES ON CAMPUS PROJECTS - ANAHEIM CAMPUS

Secondary MDF Room

- In December, crews installed the AC units in the room. Trane Heating & Air Conditioning Systems integrated the equipment in the unit and performed the tie-in to the central control unit following completion.

Swing Space Projects / Interim Housing

- No updates for this project this reporting period.

Upper Deck Parking Lot Refurbishment

- No updates for this project this reporting period.

Update / Improve Infrastructure

IT Network Refresh Project

- The scope of work for phase II of the design implementation is in the works. Change Order No. 2 for the project was presented to the Board of Trustees on February 9th, 2021. Network switches and Uninterruptible Power Supply (UPS) units are some of the items to be included in the upcoming phase of the project.



COMPLETED PROJECTS

- CYPRESS COLLEGE
- FULLERTON COLLEGE
- NOCE—ANAHEIM CAMPUS & DISTRICT OFFICES



COMPLETED PROJECTS

Cypress College

Project Name	Funding Sources	Final Project Cost	Completion Date
Swing Space Projects - Gym II Improvements	Measure J	\$153,402	July 2018
Swing Space Projects - Parking Lot 5 Realignment	Measure J	\$1,957,594	September 2018
Mass Communication & Security Systems Upgrade: Safety Film	Measure J	\$145,772	January 2019
Mass Communication & Security System Upgrade: Door Replacement	Measure J	\$50,898	January 2019
Update / Improve Infrastructure: Central Plant Upgrades	Measure J	\$61,862	October 2020



Completed Parking Lot 5 Realignment from the Library & Learning Resource Center (LLRC) at Cypress College

COMPLETED PROJECTS

Fullerton College

Project Name	Funding Sources	Final Project Cost	Project Start Date	Completion Date
Update and Improve Infrastructure / Buildings 300-500 Sewer Line	Measure J and Scheduled Maintenance	\$587,651	May 2018	July 2020



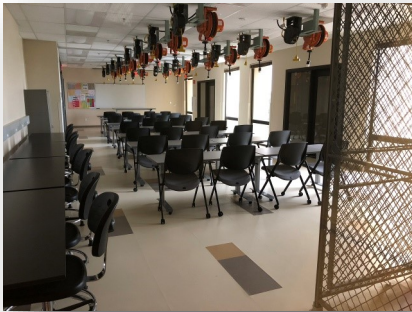
Completed Sewer Line Replacement to Buildings 300 and 500 at Fullerton College



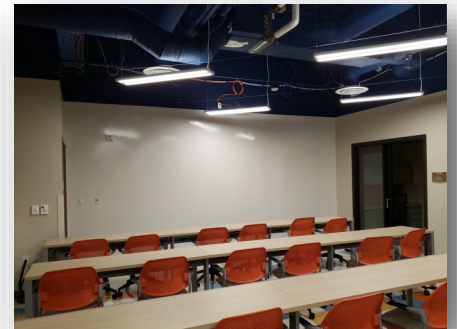
COMPLETED PROJECTS

NOCE—Anaheim Campus & District Offices

Project Name	Funding Sources	Final Project Cost	Completion Date
5th Floor CTE Laboratory and 2nd Floor Room 215	Measure J	\$640,736	September 2018
7th and 10th Floors Buildout	Measure X and Measure J	\$5,168,402	June 2019



Views of the Completed 5th Floor CTE Lab for North Orange Continuing Education at Anaheim Campus



Completed lobby and co-working spaces on the 7th and 10th Floors at Anaheim Campus

FINANCIAL REVIEW

- Capital Projects Update
- Estimated Project Budgets
- 90-Day Look Ahead Schedule



CAPITAL PROJECT UPDATES

**North Orange County Community College District
Measure J
Capital Projects Update
As of January 31, 2021**

Bond Authorization:

Bond Authorization	574,000,000	100.00%
Bonds Sold - Series A + B	250,000,000	43.55%
Available Principal Amount of Bonds	324,000,000	56.45%

Bond Funding Sources (Budget):

		Actual Received	Remaining Balance
Bond Authorization	574,000,000	250,000,000	324,000,000
Estimated Net Interest Earnings	11,000,000	8,888,259	2,111,741
Totals	585,000,000	258,888,259	326,111,741

Cost Status:

Campus	Total Budget	%	Actual Expenses to Date	Remaining Balance
Anaheim Campus	23,607,800	4.04%	2,320,111	21,287,689
Cypress Campus	225,921,200	38.62%	93,857,770	132,063,430
Fullerton Campus	311,126,400	53.18%	33,101,307	278,025,093
District Expenses				
• Program Management	20,000,000	3.42%	4,935,394	15,064,606
• Bond Issuance Cost	3,544,600	0.61%	1,301,760	2,242,840
• Other Bond Expense	800,000	0.14%	338,343	461,657
Totals	585,000,000	100.00%	135,854,685	449,145,315



ESTIMATED PROJECT BUDGETS

CYPRESS CAMPUS

CURRENT PROJECTS

PROJECT BUDGET/VARIANCE REPORT—CYPRESS

CURRENT PROJECTS	Measure J Budget NOV FY 2020-21	Measure J Budget JAN FY 2020-21	Variance	Measure J Expenses	Balance
New Science, Engineering, and Mathematics Building	\$ 94,322,272	\$ 94,322,272	\$ -	\$ 73,712,026	\$ 20,610,246
New Veterans' Resource Center & Student Activities Center Expansion	\$ 13,500,000	\$ 13,500,000	\$ -	\$ 10,747,785	\$ 2,752,215
Veterans' Memorial Bridge and Tribute Garden	\$ 100,800	\$ 100,800	\$ -	\$ -	\$ 100,800
Fine Arts Building Renovation	\$ 16,764,338	\$ 16,764,338	\$ -	\$ -	\$ 16,764,338
Update/Improve Infrastructure	\$ 14,418,406	\$ 14,418,406	\$ -	\$ -	\$ 14,418,406
Update/Improve Infrastructure (New SEM)	\$ 2,801,641	\$ 2,801,641	\$ -	\$ 2,573,569	\$ 228,072
Update/Improve Infrastructure (IT)	\$ 6,000,000	\$ 5,101,587	\$ (898,413)	\$ 1,520,769	\$ 3,580,818
Update/Improve Infrastructure (VRC/SAC)	\$ 1,055,923	\$ 1,055,923	\$ -	\$ 1,206,906	\$ (150,983)
Update/Improve Infrastructure (IT - VRC/SAC)	\$ -	\$ 252,530	\$ 252,530	\$ 10,000	\$ 242,530
Update/Improve Infrastructure (IT - New SEM)	\$ -	\$ 645,883	\$ 645,883	\$ -	\$ 645,883
Planning (Non Project Specific)	\$ 520,000	\$ 520,000	\$ -	\$ 150,807	\$ 369,193
Library-Learning Resource Center Expansion	\$ 15,000,000	\$ 15,000,000	\$ -	\$ 38,665	\$ 14,961,335
Swing Space Projects	\$ 3,236,521	\$ 3,236,521	\$ -	\$ 2,202,518	\$ 1,034,003
Mass Communications & Security Systems Upgrade	\$ 4,026,889	\$ 3,942,855	\$ (84,034)	\$ -	\$ 3,942,855
Mass Communications & Security Systems Upgrade (New SEM)	\$ 305,333	\$ 389,367	\$ 84,034	\$ 245,869	\$ 143,498
Mass Communications & Security Systems Upgrade (VRC/SAC)	\$ 60,938	\$ 60,938	\$ -	\$ 54,671	\$ 6,267
Campus-Wide Security Systems Upgrade	\$ 58,670	\$ 58,670	\$ -	\$ -	\$ 58,670
Pool Restoration and Upgrade	\$ 4,876,000	\$ 4,876,000	\$ -	\$ -	\$ 4,876,000
Gym I/Gym II Restoration and Restrooms	\$ 4,837,500	\$ 4,837,500	\$ -	\$ -	\$ 4,837,500
Gateway Phase 1	\$ 5,810,000	\$ 5,810,000	\$ -	\$ -	\$ 5,810,000
Under Piazza & Stairwell Restoration	\$ 1,963,800	\$ 1,963,800	\$ -	\$ -	\$ 1,963,800
Tech I/Tech III Capital Improvements	\$ 27,645,342	\$ 27,645,342	\$ -	\$ -	\$ 27,645,342
Athletic Field Realignment/Entry Revisions/Parking Lot Improvements	\$ 6,435,394	\$ 6,425,314	\$ (10,080)	\$ -	\$ 6,425,314
Baseball Field Improvements	\$ 1,922,901	\$ 1,932,981	\$ 10,080	\$ 1,139,002	\$ 793,979
COMPLETED PROJECTS					
Update/Improve Infrastructure (Central Plant Enhancements)	\$ 61,862	\$ 61,862	\$ -	\$ 58,513	\$ 3,349
Mass Communications & Security Systems Upgrade (Safety Film)	\$ 145,772	\$ 145,772	\$ -	\$ 145,772	\$ -
Mass Communications & Security Systems Upgrade (Door Replacement)	\$ 50,898	\$ 50,898	\$ -	\$ 50,898	\$ -
SUB TOTAL	\$ 225,921,200	\$ 225,921,200	\$ -	\$ 93,857,770	\$ 132,063,430

NOTES:

1. Project Encumbrance Transfer Request 2021-022 - CC -Required to allocate funds attributed to the Update/Improve Infrastructure VRC-SAC project budget per approved Sundt Construction P0131052 - CO#2 - BOT approved 07/28/20 - PCO-V0250 - \$21,989
2. Project Encumbrance Transfer Request 2021-023 - CC - Required to create and realign the Update/Improve Infrastructure (IT -VRC-SAC) project budget for clarity & tracking
3. Project Encumbrance Transfer Request 2021-025 - CC - Required to allocate funds to the Baseball Field Improvements project. Amend #1 was issued to Vital Inspection, Inc. P0139938 - \$10,080 - provide additional Inspector of Record (IOR) Services.
4. Project Encumbrance Transfer Request 2021-026 - CC - Required to allocate funds attributed to the approval of Sundt Construction Co., - CO#3 - P0131052 - Board Approved 11/10/20 - SEM - Security Camera's, cable, and hardware.
5. Project Encumbrance Transfer Request 2021-027 - CC - Required to allocate funds attributed to the approval of Sundt Construction Co., - CO#3 - P0131052 - Board Approved 11/10/20 - IT Upgrades to match Districtwide Infrastructure projects and new District Standards.
6. Project Encumbrance Transfer Request 2021-030 - CC - Required to Reverse Project Encumbrance Transfer Request 2021-022 - CC
7. Project Encumbrance Transfer Request 2021-031 - CC - Required to allocate funds attributed to the approval of Sundt Construction Co., - CO#2 - P0131052 - Board Approved 07/28/20 - PCO-V0250 - \$21,989 - IT Network Refresh



ENCUMBRANCES OVER \$10,000

CYPRESS CAMPUS - New Encumbrances (Nov. 2020 - Jan. 2021)

Project	Vendor	Purchase Order No.	Purchase Order Amount	Scope of Work
VRC/SAC	GST	P0142639	\$38,963.09	Academic Computing Systems
VRC/SAC	Sidepath, Inc.	P0142619	\$46,753.82	Computers for Associated Students Workspace
VRC/SAC	GST	P0142660	\$134,038.63	Computers for VRC
VRC/SAC	Sidepath, Inc.	P0142865	\$48,946.00	Computer Equipment for VRC and SAC
VRC/SAC	GST	P0142866	\$11,812.76	Projectors for ASB Room at SAC
New SEM	VWR Funding, Inc.	P0143136	\$66,314.14	Laboratory Equipment for New SEM
Fine Arts Building Renovation	DLR Group	P0142864	\$719,544.00	Design Services for Preliminary Planning Phase



ESTIMATED PROJECT BUDGETS

FULLERTON CAMPUS

CURRENT PROJECTS

PROJECT BUDGET/VARIANCE REPORT—FULLERTON

CURRENT PROJECTS	Measure J Budget NOV FY 2020-21	Measure J Budget JAN FY 2020-21	Variance	Measure J Expenses	Balance
Greenhouse Replacement	\$ 834,381	\$ 834,381	\$ -	\$ 342,913	\$ 491,468
New Instructional Building	\$ 53,588,031	\$ 53,588,031	\$ -	\$ 23,595,962	\$ 29,992,069
Central Plant Replacement & Expansion	\$ 10,600,000	\$ 10,600,000	\$ -	\$ 5,521,415	\$ 5,078,585
Renovate Buildings 300 & 500	\$ 20,482,000	\$ 20,482,000	\$ -	\$ 944,391	\$ 19,537,609
New M & O Building	\$ 6,758,944	\$ 6,758,944	\$ -	\$ 6,625	\$ 6,752,319
Chapman / Newell Instructional Building	\$ 21,985,777	\$ 21,985,777	\$ -	\$ 6,625	\$ 21,979,152
New Performing Arts Complex—Demolish Buildings 1100 and 1300	\$ 30,724,153	\$ 30,724,153	\$ -	\$ -	\$ 30,724,153
New Welcome Center & Lot C West	\$ 37,353,872	\$ 37,353,872	\$ -	\$ -	\$ 37,353,872
New Horticulture/Lab School/STEM Lab	\$ 33,813,764	\$ 33,813,764	\$ -	\$ -	\$ 33,813,764
Renovate Building 840 Campus Services	\$ 7,878,400	\$ 7,878,400	\$ -	\$ -	\$ 7,878,400
Demolish Building 2000	\$ 1,108,000	\$ 1,108,000	\$ -	\$ -	\$ 1,108,000
New Parking Structure	\$ 11,219,260	\$ 11,219,260	\$ -	\$ -	\$ 11,219,260
Update/Improve Infrastructure	\$ 23,110,416	\$ 23,110,416	\$ -	\$ -	\$ 23,110,416
Update/Improve Infrastructure (IT)	\$ 8,000,000	\$ 7,721,018	\$ (278,982)	\$ 1,964,873	\$ 5,756,145
Update/Improve Infrastructure (IT - New Instructional Bldg.)	\$ -	\$ 278,982	\$ 278,982	\$ -	\$ 278,982
New Thermal Energy Storage (TES)	\$ 10,139,524	\$ 10,139,524	\$ -	\$ -	\$ 10,139,524
Renovate Building 600	\$ 3,117,641	\$ 3,117,641	\$ -	\$ -	\$ 3,117,641
Renovate Health Center	\$ 1,328,800	\$ 1,328,800	\$ -	\$ -	\$ 1,328,800
Renovate Faculty Lounge & Offices	\$ 6,212,250	\$ 6,212,250	\$ -	\$ -	\$ 6,212,250
Renovate Wellness Center	\$ 2,534,400	\$ 2,534,400	\$ -	\$ -	\$ 2,534,400
Landscape & Hardscape Improvements	\$ 3,840,000	\$ 3,840,000	\$ -	\$ -	\$ 3,840,000
Renovate Building 3100	\$ 2,402,940	\$ 2,402,940	\$ -	\$ -	\$ 2,402,940
Demolish Building 1901-04, 1956-60, 3000	\$ 1,333,000	\$ 1,333,000	\$ -	\$ -	\$ 1,333,000
Parking Lot Improvements at Building 3000	\$ 1,999,500	\$ 1,999,500	\$ -	\$ -	\$ 1,999,500
Renovate Building 2100	\$ 8,277,500	\$ 8,277,500	\$ -	\$ -	\$ 8,277,500
Demolish Buildings 2200 & 3104	\$ 1,392,209	\$ 1,392,209	\$ -	\$ -	\$ 1,392,209
Planning (Non Project Specific)	\$ 595,000	\$ 595,000	\$ -	\$ 231,347	\$ 363,653
COMPLETED PROJECTS					
Update/Improve Infrastructure (Bldg 300-500 Sewer Line)	\$ 496,638	\$ 496,638	\$ -	\$ 487,156	\$ 9,482
SUB TOTAL	\$ 311,126,400	\$ 311,126,400	\$ -	\$ 33,101,307	\$ 278,025,093

NOTES:

1. Project Encumbrance Transfer Request 2021-028-FC- Required to allocate funds attributed to the approval of BN Builders, Inc. - P0138124 - CO#1 - Board Approved 01/26/21 - Added services for the design of the Wireless Access Points (WAP's) in the Instructional Building.



ENCUMBRANCES OVER \$10,000

FULLERTON CAMPUS - New Encumbrances (Nov. 2020 - Jan. 2021)

Project	Vendor	Purchase Order No.	Purchase Order Amount	Scope of Work
New Performing Arts Complex	Geotechnical Solutions, Inc.	P0142243	\$12,000.00	Geotechnical Services for Site Soil Conditions
New M&O and Chapman / Newell Instructional Building	David Evans and Associates, Inc.	P0142382	\$23,150.00	Topographic Survey
New Performing Arts Complex	David Evans and Associates, Inc.	P0142935	\$22,000.00	Topographic Survey
New Instructional Building	GST	P0142867	\$926,941.81	A/V Integration
New Instructional Building	Sasco Electric	P0143288	\$15,960.00	Cabling



ESTIMATED PROJECT BUDGETS

ANAHEIM CAMPUS

CURRENT PROJECTS

PROJECT BUDGET/VARIANCE REPORT—ANAHEIM

CURRENT PROJECTS	Measure J Budget NOV FY 2020-21		Measure J Budget JAN FY 2020-21	Variance	Measure J Expenses	Balance
Update/Improve Infrastructure	\$ 668,933	4	\$ 661,133	\$ (7,800)	\$ -	\$ 661,133
Update/Improve Infrastructure (IT)	\$ 1,000,000		\$ 1,000,000	\$ -	\$ 650,593	\$ 349,407
Update/Improve Infrastructure (Secondary MDF)	\$ 97,607	4	\$ 105,407	\$ 7,800	\$ 60,832	\$ 44,575
Develop Interior and Exterior Signage	\$ 313,800		\$ 313,800	\$ -	\$ -	\$ 313,800
Second Floor Tenant Improvements	\$ 813,000		\$ 813,000	\$ -	\$ -	\$ 813,000
Swing Space Projects/ Interim Housing	\$ 358,887	1, 2 & 3	\$ 2,000,000	\$ 1,641,113	\$ -	\$ 2,000,000
Upper Parking Lot Remodel	\$ 2,183,000		\$ 2,183,000	\$ -	\$ 42,503	\$ 2,140,497
Upper Deck Enhancements	\$ 309,901		\$ 309,901	\$ -	\$ -	\$ 309,901
1st. Floor Remodel Student Center and Classrooms	\$ 2,352,720		\$ 2,352,720	\$ -	\$ -	\$ 2,352,720
Pedestrian and Vehicular Traffic Flow	\$ 3,329,000	1	\$ 2,329,000	\$ (1,000,000)	\$ -	\$ 2,329,000
4th Floor Improvements	\$ 218,000		\$ 218,000	\$ -	\$ -	\$ 218,000
Outdoor Patio Remodel	\$ 1,382,500		\$ 1,382,500	\$ -	\$ -	\$ 1,382,500
Develop Drop-Off Plaza at Romney Drive	\$ 1,069,000	2	\$ 569,000	\$ (500,000)	\$ -	\$ 569,000
Develop Intersection at Romney & Coronet	\$ 914,744	3	\$ 773,631	\$ (141,113)	\$ -	\$ 773,631
Holding Account	\$ 6,600,000		\$ 6,600,000	\$ -	\$ -	\$ 6,600,000
Planning (Non Project Specific)	\$ 440,000		\$ 440,000	\$ -	\$ 9,475	\$ 430,525
COMPLETED PROJECTS						
7th and 10th Floors Buildout	\$ 915,972		\$ 915,972	\$ -	\$ 915,972	\$ -
5th Floor CTE & 2nd Floor Room 215	\$ 640,736		\$ 640,736	\$ -	\$ 640,736	\$ -
SUB TOTAL	\$ 23,607,800		\$ 23,607,800	\$ -	\$ 2,320,111	\$ 21,287,689

NOTES:

1. Project Encumbrance Transfer Request 2021-018-AC- Required to realign the Swing Space Project/ Interim Housing project budget as a result of cost evaluations in relation to Design, construction, rental, and dismantling of modular buildings for the relocation of classrooms and facilities on the first floor of the Anaheim - NOCE campus.
2. Project Encumbrance Transfer Request 2021-019-AC- Required to realign the Swing Space Project/ Interim Housing project budget as a result of cost evaluations in relation to Design, construction, rental, and dismantling of modular buildings for the relocation of classrooms and facilities on the first floor of the Anaheim - NOCE campus.
3. Project Encumbrance Transfer Request 2021-020- Required to realign the Swing Space Project/ Interim Housing project budget as a result of cost evaluations in relation to Design, construction, rental, and dismantling of modular buildings for the relocation of classrooms and facilities on the first floor of the Anaheim - NOCE campus.
4. Project Encumbrance Transfer Request 2021-029-AC- Required to allocate funds to the Secondary MDF project. CO#1 was issued to Rodriguez Engineering - P0139176 in the amount of \$7,800.



ENCUMBRANCES OVER \$10,000

ANAHEIM CAMPUS - New Encumbrances (Nov. 2020 - Jan. 2021)

Project	Vendor	Purchase Order No.	Purchase Order Amount	Scope of Work
Secondary MDF	Ram Air Engineering, Inc.	P0142523	\$23,247.19	Install Split System / HVAC



ESTIMATED PROJECT BUDGETS

DISTRICT

PROJECT BUDGET/VARIANCE REPORT—DISTRICT

DISTRICT WIDE EXPENSE	Measure J Budget NOV FY 2020-2021	Measure J Budget JAN FY 2020-21	Variance	Measure J Expenses	Balance
Program Management Fees	\$ 20,000,000	\$ 20,000,000	\$ -	\$ 4,935,394	\$ 15,064,606
Bond Issuance Cost	\$ 3,544,600	\$ 3,544,600	\$ -	\$ 1,301,760	\$ 2,242,840
Other	\$ 800,000	\$ 800,000	\$ -	\$ 338,343	\$ 461,657
SUB TOTAL	\$ 24,344,600	\$ 24,344,600	\$ -	\$ 6,575,497	\$ 17,769,103



ENCUMBRANCES OVER \$10,000

DISTRICT - New Encumbrances (Nov. 2020 - Jan. 2021)

Project	Vendor	Purchase Order No.	Purchase Order Amount	Scope of Work
Bond Program	MAAS Companies, Inc.	P0142512	\$4,074,508	Program Management



ACTIVE PROJECTS

90 - DAY LOOK AHEAD



NORTH ORANGE COUNTY COMMUNITY COLLEGE DISTRICT

CYPRESS - FULLERTON - ANAHEIM (NOCE)

90-DAY LOOK AHEAD SCHEDULE

(02-01-21 TO 04-30-21)



	February				March					April				Comments
	2	9	16	23	2	9	16	23	30	6	13	20	27	
GENERAL														
NOCCCD Board Meetings														
COC Meetings														March 3rd, 2021 (Meetings held via Zoom)
Bond Program Management Team Mtgs.														February 16th and March 16th (Meetings held via Zoom)
PLANNING														
ANAHEIM (NOCE)														
Upper Deck Parking Lot Refurbishment														Final Project Proposal (FPP) Under Review at CCCC
DESIGN PHASE														
CYPRESS														
Fine Arts Building Renovation														
Preliminary Plans														Complete
CCCC Review of Preliminary Plans														In Progress
Working Drawings														Upcoming - Start upon Approval from CCCC
FULLERTON														
New Performing Arts Complex														
RFP for Architect of Record														Complete
Preliminary Plans														In Progress - Design Kick-off Meeting on 2/5/2021
CCCC Review of Preliminary Plans														Upcoming
DSA PHASE & AGENCY REVIEW														
CYPRESS														
New SEM - Deferred Approvals														Submittals forthcoming for DSA review and Approval
BIDDING														
FULLERTON														
Renovate 300-500 Buildings														
Bidding for Gen. Contractor														Complete
Bids Due & Evaluation Process														Bids Due on February 16th, 2021
Gen. Contractor Contract Award & NTP														In Progress - Target Date to Award Contract is March, 24, 2021
PRE-CONSTRUCTION PHASE														
CYPRESS														
Mass Communications - Security Cameras														Development of Scopes of Work
CONSTRUCTION PHASE														
CYPRESS														
Network Refresh														
Phase I Design Implementation														Complete
Phase II Design Implementation														Planning In Progress
New SEM & Assoc. Mass Comm and Infra. Construction														
IDC Interior Framing and Finishes														In Progress
Building Envelope - Sheathing and Glass Installation														Complete
Bathroom component installation														In Progress
Elevator mechanical room framing and rail component installation														In Progress
Electrical room wiring and transformer installation														In Progress
Voice, data, and fire alarm cabling														In Progress
Hardscaping around building site														In Progress
New VRC/SAC														
VRC Sundt Punch Walk and Final Finishes Repairs														In Progress
SAC Sundt Punch Walk and Final Finishes Repairs														In Progress
Veterans' Memorial Bridge and Tribute Garden and Pond Refurb.														Sundt Punch Walk and Final Finishes Repairs Underway
Pond Refurbishment Punch List														Sundt Punch Walk and Final Finishes Repairs Underway
Athletic Field Realignment - Baseball Clubhouse Punch-List														JRH and Westberg + White Punch Walk and Final Finishes Repairs



ACTIVE PROJECTS

90 - DAY LOOK AHEAD (Continued)



NORTH ORANGE COUNTY COMMUNITY COLLEGE DISTRICT

CYPRESS - FULLERTON - ANAHEIM (NOCE)

90-DAY LOOK AHEAD SCHEDULE

(02-01-21 TO 04-30-21)



	February				March					April				Comments
	2	9	16	23	2	9	16	23	30	6	13	20	27	
CONSTRUCTION PHASE														
FULLERTON														
Horticulture Lab - Greenhouse Replacement														
Installation of Greenhouse														Complete
Punch Walk and Final Repairs														RT Contractor and Westberg + White - In Progress
New Instructional Building														
Scaffolding and Exterior Wall Framing														Complete
Exterior Wall Sheathing, Waterproofing and Window Installation														In Progress
Mechanical, Electrical, and Plumbing Rough-In														In Progress
Interior Framing														In Progress
Building Roofing														In Progress
Interior Drywall														In Progress
Central Plant Expansion														
Installation of Underground Utilities														In Progress
Connection to Existing Utilities														In Progress
Mechanical, Electrical, and Plumbing Rough-In														In Progress
Exterior Wall Sheathing, Waterproofing and Moulding														Complete
Network Refresh														
Phase I Design Implementation														Complete
Phase II Design Implementation														Planning In Progress
Coordination for Greenhouse Components														In Progress
ANAHEIM (NOCE)														
2nd Main Distribution Frame (MDF) Room - Equipment														Nearing Completion
CLOSE-OUT PHASE														
ANAHEIM (NOCE)														
2nd Main Distribution Frame (MDF) Room for Campus														Upcoming
CYPRESS														
Update Infrastructure - Central Plant Enhancements														In Progress
Athletic Field Realignment - Baseball Clubhouse														Upcoming upon completion of work
VRC/SAC														Upcoming
Veterans' Memorial Bridge and Tribute Garden and Pond Refurb.														Upcoming
Pond Refurbishment														Upcoming
FULLERTON														
Horticulture Lab - Greenhouse Replacement														Upcoming upon completion of work

* Non-Measure J expenditure activities



March 2021

Citizens' Oversight Committee

COC

Measure J Bond Program



1830 W. Romneya Dr., Building B., Anaheim, CA 92801