



September 2021

# CAPITAL PROJECTS REPORT to the

## Citizens' Oversight Committee

MAAS

**Intentionally Left Blank**

# TABLE OF CONTENTS

## Active Project Status Report

### *Cypress Campus*

Campus Aerial View.....	2
New Science, Engineering, and Mathematics Building .....	3
New Veterans' Resource Center & Student Activities Center Expansion .....	4
Veterans' Memorial Bridge, Plaza, & Tribute Garden .....	5
Pond Refurbishment .....	6
Fine Arts Building Renovation .....	7
Swing Space - Fine Arts (old SEM) .....	8
Campus-Wide Security Systems Upgrade .....	9
Update / Improve Infrastructure.....	10
Mass Communication & Security Systems Upgrade .....	11
Updates on Campus Projects - Cypress College .....	12-15

### *Fullerton Campus*

Campus Aerial View.....	16
Greenhouse Replacement .....	17
New Instructional Building .....	18
Central Plant Replacement & Expansion.....	19
Renovate Buildings 300 & 500 .....	20
New Maintenance & Operation Building .....	21
Chapman / Newell Instructional Building.....	22
New Performing Arts Complex - Demolish Buildings 1100 and 1300 .....	23
Update / Improve Infrastructure.....	24
Updates on Campus Projects - Fullerton College .....	25-32

### *Anaheim Campus*

Campus Aerial View.....	33
Update / Improve Infrastructure—Secondary MDF Room .....	34
Swing Space Projects / Interim Housing.....	35
Develop Interior And Exterior Signage .....	36
Anaheim Campus Tower First Floor Life/Safety Renovation.....	37
Update / Improve Infrastructure.....	38
Updates on Campus Projects - Anaheim Campus .....	39-40

## Completed Projects

Cypress College .....	42
Fullerton College .....	43
NOCE - Anaheim Campus & District Offices.....	44

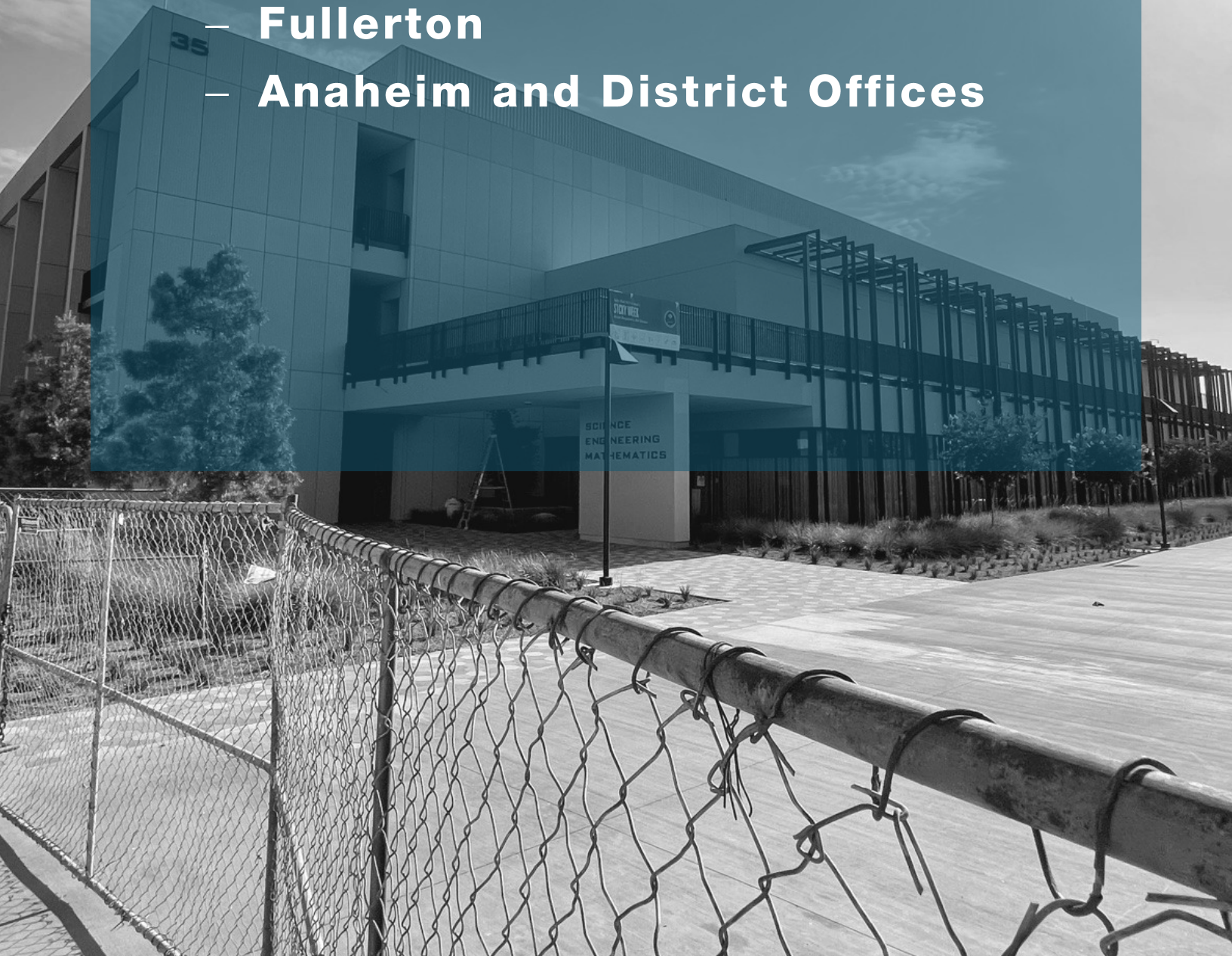
## Financial Review

<i>Capital Project Updates - Measure J</i> .....	46
Estimated Project Budgets & Purchase Orders Over \$10,000 .....	47-56
Cypress Campus .....	47-48
Fullerton Campus .....	49-50
Anaheim Campus .....	51-52
District .....	53-54
90-Day Look Ahead Schedule.....	55-56

# Active Project Status Report

## Campus Projects

- Cypress
- Fullerton
- Anaheim and District Offices





# AERIAL VIEW — CYPRESS CAMPUS PROJECTS

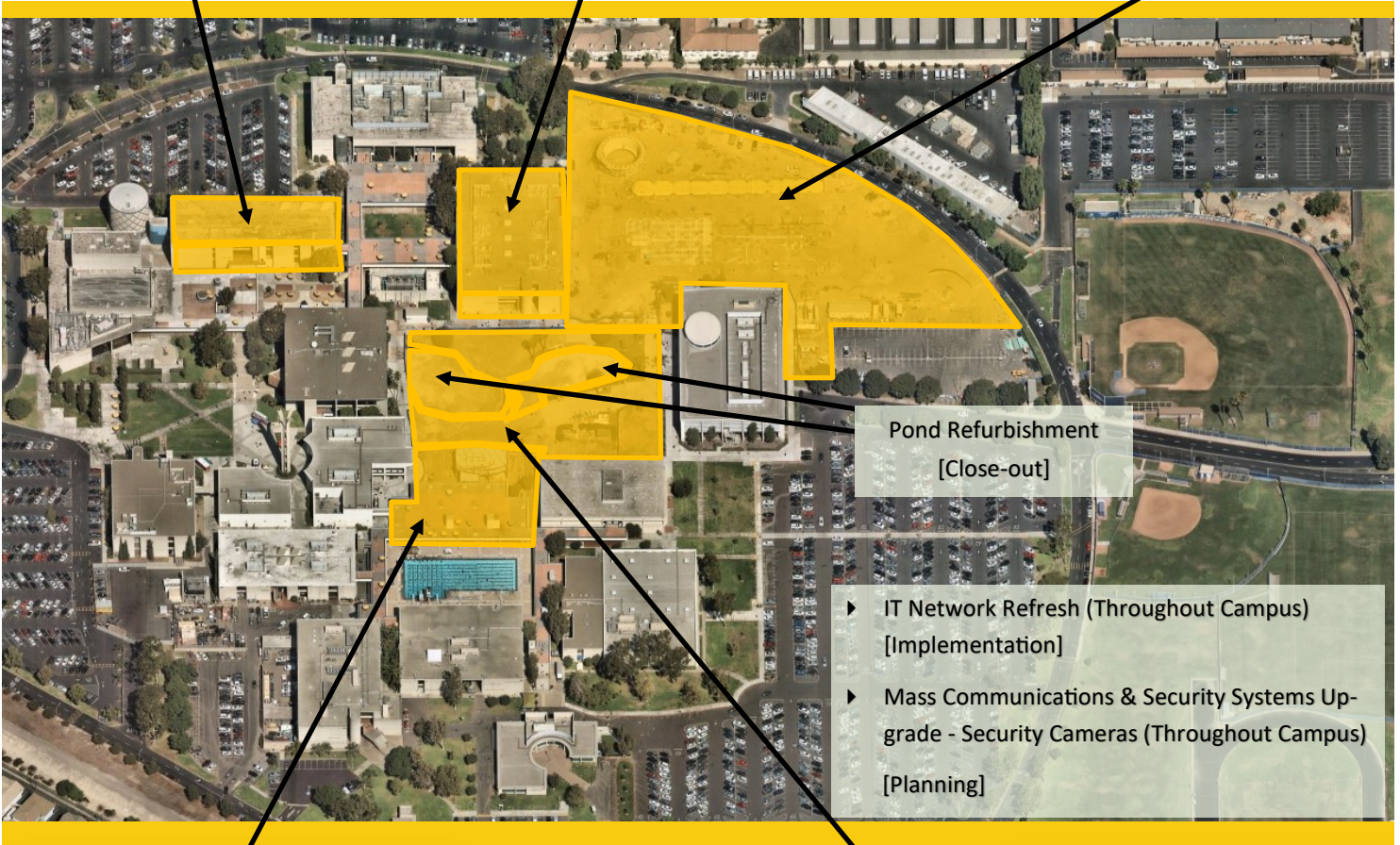


Fine Arts Building Renovation  
[Design - Construction Documents]

Swing Space Fine Arts (Old SEM)  
[Design - Construction Documents]



New Science, Engineering  
and Mathematics Building  
[Construction]



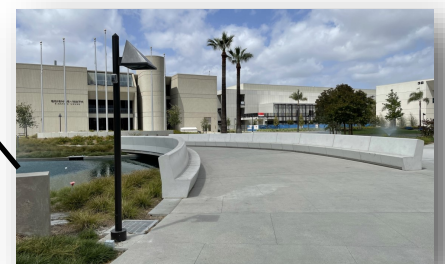
Pond Refurbishment  
[Close-out]

- ▶ IT Network Refresh (Throughout Campus)  
[Implementation]
- ▶ Mass Communications & Security Systems Up-  
grade - Security Cameras (Throughout Campus)  
[Planning]



New Veterans' Resource Center &  
Student Activities Center Expansion  
[Close-out]

Veterans' Memorial Bridge,  
Plaza, & Tribute Garden  
[Close-out]



# PROJECT STATUS REPORT — CYPRESS CAMPUS

## NEW SCIENCE, ENGINEERING, AND MATHEMATICS BUILDING CONSTRUCTION

Address	9200 Valley View St. Cypress, CA 90630
Project Manager	Michael Zari Cypress College
Architect	LPA, Inc.
Construction Manager at Risk	Sundt Construction, Inc.
Project Gross Square Footage	106,023 GSF
DSA Application A#	04-117024



### Project Overview

High priority project to increase the efficiency of the square footage and accommodation of services for Science, Engineering, and Mathematics programs with 21 lecture and 23 lab classrooms, an Immersive Digital Classroom (IDC), and an incinerator for the Mortuary Science Program.

#### Budget & Construction Costs

- Total Project Budget (Est.) ..... \$101,651,684
  - New SEM Building ..... \$94,068,202
  - New SEM FF&E ..... \$3,000,000
  - Infrastructure ..... \$3,055,711
  - Mass Communication ..... \$389,367
  - Network Refresh ..... \$645,883
  - HEERF Funds ..... \$492,521
- Funding Sources: ...Measure J, Campus Funds, & Federal Grant
  - Measure J ..... \$98,159,163
  - Campus Funds (Est. FF&E) ..... \$3,000,000
  - Federal Grant (HEERF) ..... \$492,521
- Construction Cost ..... \$82,085,541
- Construction Percent Completion ..... 99.1%

### Schedule

- Design Start ..... Jun. 29, 2016
- Construction Start ..... Feb. 6, 2019
- Contractual Substantial Completion ... Feb. 15 2021
- Substantial Completion ..... Jun. 1 2021
- Construction Completion ..... Jul. 19 2021
- Targeted Academic Occupancy ..... Sep. 2021

#### Allowances and Contingencies Status

	In Contract	Approved	%	Balance	%
CM Allowance	\$1,031,360	\$910,591	88.3	\$120,769	11.7
District Allowance	\$1,858,120	\$1,824,664	98.2	\$33,456	1.8
CM Contingency	\$1,437,988	\$1,347,567	93.7	\$90,421	6.3





# PROJECT STATUS REPORT — CYPRESS CAMPUS

## NEW VETERANS' RESOURCE CENTER & STUDENT ACTIVITIES CENTER EXPANSION CLOSE-OUT

**Address** 9200 Valley View St.  
Cypress, CA 90630

**Project Manager** Michael Zari  
Cypress College

**Architect** LPA, Inc.

**Construction Manager at Risk** Sundt Construction, Inc.

**Project Gross Square Footage** 12,119 GSF

**DSA Application A#** 04-117023



### Project Overview

High priority project to increase the square footage and provide new accommodation of services for the Veterans' Resource Center (VRC)/Student Activities Center (SAC) Expansion.

### Budget & Construction Costs

- Total Project Budget (Est.) ..... \$14,927,000
  - VRC/SAC Building (Est.) ..... \$13,468,776
    - Measure J ..... \$13,411,167
    - Campus Funds ..... \$57,609
  - Infrastructure ..... \$1,144,756
  - Mass Communication ..... \$60,938
  - Network Refresh..... \$252,530
- Funding Sources..... Measure J & Campus
  - Measure J ..... \$14,869,391
  - Campus Funds ..... \$57,609
- Construction Cost..... \$10,241,376
- Construction Percent Completion .....99.0%

### Schedule

- Design Start ..... Dec. 9, 2016
- Construction Start ..... Feb. 6, 2019
- Contractual Substantial Completion ..... Aug. 2020
- Substantial Completion ..... Mar. 10 2021
- Construction Completion ..... Jul.19 2021
- Academic Occupancy ..... Aug. 2021

#### Allowances and Contingencies Status

	In Contract	Approved	%	Balance	%
CM Allowance	\$257,840	\$251,214	97.4	\$6,626	2.6
District Allowance	\$214,530	\$212,315	99.2	\$1,745	0.8
CM Contingency	\$168,797	\$168,797	100.0	\$-	0.0



# PROJECT STATUS REPORT — CYPRESS CAMPUS

## VETERANS' MEMORIAL BRIDGE, PLAZA, & TRIBUTE GARDEN CLOSE-OUT

**Address** 9200 Valley View St.  
Cypress, CA 90630

**Project Manager** Michael Zari  
Cypress College

**Architect** LPA, Inc.

**Construction Manager at Risk** Sundt Construction, Inc.

**Project Square Footage** 63,192 GSF

**DSA Application A#** 04-117023



### Project Overview

Construction of a Veterans' Memorial Bridge (VMB), Tribute Garden, and site improvements to adjacent areas, including the Veterans' Resource Center Plaza.

### Budget & Construction Costs

- Funding Sources ..... Measure J & Local
- Total Project Budget (Est.) ..... \$1,600,800
  - Measure J ..... \$100,800
  - Local ..... \$1,500,000
- Construction Cost ..... \$1,268,527
- Construction Percent Completion ..... 99.6%

### Schedule

- Design Start ..... Dec. 9, 2016
- Construction Start ..... Feb. 6, 2019
- Contracted Substantial Completion ..... Aug. 2019
- Substantial Completion ..... Mar. 2 2021
- Construction Completion ..... Jul. 19 2021
- Occupancy ..... Aug. 2021

#### Allowances and Contingencies Status

	In Contract	Approved	%	Balance	%
CM Contingency	\$19,538	\$18,805	96.2	\$733	3.8





# PROJECT STATUS REPORT — CYPRESS CAMPUS

## POND REFURBISHMENT

### CLOSE-OUT

<b>Address</b>	<b>9200 Valley View St. Cypress, CA 90630</b>
<b>Project Manager</b>	<b>Michael Zari Cypress College</b>
<b>Architect</b>	<b>LPA, Inc.</b>
<b>Construction Manager at Risk</b>	<b>Sundt Construction, Inc.</b>
<b>Project Square Footage</b>	<b>16,357 GSF</b>
<b>DSA Application A#</b>	<b>04-117023</b>



### Project Overview

Repairs and refurbishment of existing ponds. Replacement of pond lining and rearrangement of water features.

### Budget & Construction Costs

- Funding Sources ..... Local
- Total Project Budget (Est.) ..... \$682,017
  - Local ..... \$682,017
- Construction Cost..... \$629,196
- Construction Percent Completion .... 100.0%

### Schedule

- Design Start ..... Dec. 9, 2016
- Construction Start ..... Feb. 6, 2019
- Contracted Substantial Completion ..... Aug. 2019
- Substantial Completion ..... Mar. 2 2021
- Construction Completion ..... Jul.19 2021
- Occupancy ..... Aug. 2021

#### Allowances and Contingencies Status

	<b>In Contract</b>	<b>Approved</b>	<b>%</b>	<b>Balance</b>	<b>%</b>
CM Contingency	\$9,379	\$8,736	93.1	\$643	6.9



# PROJECT STATUS REPORT — CYPRESS CAMPUS

## FINE ARTS BUILDING RENOVATION DESIGN— CONSTRUCTION DOCUMENTS

<b>Address</b>	<b>9200 Valley View St. Cypress, CA 90630</b>
<b>Project Manager</b>	<b>Allison Coburn Cypress College</b>
<b>Architect</b>	<b>DLR Group</b>
<b>Construction Manager</b>	<b>Sundt Construction, Inc.</b>
<b>Project Delivery Method</b>	<b>CM Multi-Prime</b>



### Project Overview

The project involves the renovation of the existing 36,804 ASF in the Fine Arts Building. Currently, related instructional programs are dispersed throughout the Campus. Renovations will encompass new recording arts spaces with updated equipment and facilities, rehearsal and performance spaces for music instruction, spaces for student study near departmental faculty and other resources, and the reuse of existing vacant spaces currently not configured for instruction. Noise intrusion between spaces will be mitigated to minimize disruptions to instruction and music practice, and new instructional technology will be installed to support current instructional methodologies and pedagogies. The scope also replaces the existing mechanical, electrical, and plumbing systems and allocates sufficient square footages for code compliant bathrooms.

- Preliminary Total Project Budget..... \$51,546,861
- Funding Source ..... Measure J & State Capital Outlay
  - Measure J ..... \$33,413,861
  - State Capital Outlay Funds ..... \$18,133,000
- Estimated Construction Start..... Fall 2022
- Targeted Completion ..... Winter 2024



# PROJECT STATUS REPORT — CYPRESS CAMPUS

## SWING SPACE - FINE ARTS (OLD SEM)

### DESIGN— CONSTRUCTION DOCUMENTS

**Address** 9200 Valley View St.  
Cypress, CA 90630

**Project Manager** Allison Coburn  
Cypress College

**Architect** DLR Group

**Project Delivery Method** TBD

**Project Square Footage** 100,681 GSF

**DSA Application A#** TBD



## Project Overview

The existing 1972, 3-story, 100,681 square foot Science Engineering and Math (SEM) building will be utilized to temporarily house the Fine Arts programs while the Fine Arts Building undergoes renovation. To accommodate the fine arts programs, minor renovations will be required including, but not limited to, demolition of casework, sinks, plumbing, flooring, and accessibility restroom upgrades. Only a portion of the gross square footage (GSF) is undergoing renovation.

- Project Budget..... \$5,626,285
- Funding Source ..... Measure J
- Estimated Construction Start..... Late Spring 2022
- Targeted Completion ..... Early Fall 2022



# PROJECT STATUS REPORT — CYPRESS CAMPUS

## CAMPUS-WIDE SECURITY SYSTEMS UPGRADE PLANNING

**Address** 9200 Valley View St.  
Cypress, CA 90630

**Project Manager** Allison Coburn  
Cypress College

**Architect** TBD

**Project Delivery Method** TBD



### Project Overview

Assessment of the Campus security system and development of security system standards. Considerations for design solutions are underway. Construction and implementation are initially estimated at \$1.7M.

- Project Budget..... \$2,058,670
- Funding Source ..... Measure J
- Project Delivery Method ..... To Be Determined
- Architect/Engineer of Record ..... To Be Determined
- Estimated Construction Start..... To Be Determined
- Targeted Completion ..... To Be Determined





# PROJECT STATUS REPORT — CYPRESS CAMPUS

## UPDATE/IMPROVE INFRASTRUCTURE

### VARIOUS STAGES

<b>Address</b>	<b>9200 Valley View St. Cypress, CA 90630</b>	<b>Total Project Budget</b>	<b>\$24,680,735 (Measure J)</b>
		<b>Total Budget Allocated</b>	<b>\$16,562,329 (Measure J)</b>
<b>Number of Projects</b>	<b>8</b>	<b>Funding Source</b>	<b>Measure J &amp; Capital Outlay</b>

### General Overview

Projects to address infrastructure improvements or upgrades throughout the Campus. Funds are allocated to projects as needs are identified. For infrastructure projects related to the New SEM and VRC/SAC, please refer to pages 3 and 4 of this report.

### IT Network Refresh Project Overview

#### IMPLEMENTATION

Assessment of Campus data network infrastructure to identify necessary upgrades and changes that will enable supporting future Campus needs; specifically addressing wired, wireless, voice, and video networks. The scope includes replacing network core switches, providing a more responsive support structure, preparing for cloud computing, and adaptation of voice over IP systems across the District. For costs related to the New SEM and VRC/SAC, please refer to pages 3 and 4 of this report.

- Project Budget..... \$9,358,073
  - Current Implementation (Measure J) ..... \$1,972,462
  - Current Implementation (Capital Outlay)..... \$4,256,486
  - Upcoming Phases (Measure J) ..... \$3,129,125
- Funding Source ..... Measure J & Capital Outlay Funds
- Project Delivery Method ..... California Multiple Award Schedule (CMAS)
- Design Implementation..... VectorUSA
- Architect..... Shandam Consulting
- Project Management ..... District IS / PlanNet Consulting
- Design Implementation Start..... November 2019
- Targeted Completion ..... May 2022



# PROJECT STATUS REPORT — CYPRESS CAMPUS

## MASS COMMUNICATION & SECURITY SYSTEMS UPGRADE

### VARIOUS STAGES

<b>Address</b>	<b>9200 Valley View St. Cypress, CA 90630</b>	<b>Total Project Budget</b>	<b>\$2,589,830</b>
		<b>Total Budget Allocated</b>	<b>\$646,975</b>
<b>Number of Projects</b>	<b>4</b>	<b>Funding Source</b>	<b>Measure J</b>

### General Overview

Projects to address fire alarm, mass communication, security, access control, and lockdown systems throughout the Campus. Funds are allocated to projects as needs are identified. Two projects have been completed to date related to door replacements and safety film installation. Please refer to pages 52 for additional details on completed projects. For mass communication & security systems projects related to the New SEM and VRC/SAC, please refer to pages 3 and 4 of this report.



# PROJECT STATUS REPORT — CYPRESS CAMPUS

## UPDATES ON CAMPUS PROJECTS - CYPRESS COLLEGE

### Campus

- Construction work proceeds at the site during the current COVID-19 prevention guideline directives from the State's Governor. Sundt is following recommendations from the Centers for Disease Control (CDC) on social distancing and hygiene practices for all its employees and subcontractors. Daily temperature checks have been implemented for all employees on site.

### New Science, Engineering, and Mathematics Building

- Punch-list walks began in the last week of May with landscaping and interiors. Repairs were addressed in June and early July. The crematory program's incinerator was successfully started, and the deluge fire suppression system was tested at the IDC. Substantial completion was achieved on June 7th, 2021, marking the conclusion of all major construction activities at the building and surrounding site.
- Commissioning is nearing completion at the building. Exterior Lighting is 90% complete; however, landscape lighting up-wash lights were not functional at the time of testing. Pending testing is landscape irrigation as the controller is going to be replaced to match what is currently installed throughout the Campus. A final test should be conducted after the controller is swapped. Plumbing rechecks are 50% complete. Certified Testing and Balance (TAB) for chilled water started in late May upon completion of the installation of new valves at the Campus Central Plant. Testing and balancing assessments have been completed and are under review by the Architect of Record and the project's mechanical engineering team.
- Dovetail Decision Consultants began assisting in the coordination for furniture and equipment deliveries at the site starting on June 1st. In July, issues were identified with several items that had up to 8-week lead times. Mitigation measures were evaluated, and now final furniture deliveries are anticipated to arrive in early August.
- In late July, glass panels were installed for the greenhouse enclosure on the second floor of the building. Greenhouse work benches were installed in the last week of July and work extended into early August.



New SEM Construction Progress — August 2021

# PROJECT STATUS REPORT — CYPRESS CAMPUS

## UPDATES ON CAMPUS PROJECTS - CYPRESS COLLEGE (Continued)



**New SEM Construction Progress — August 2021**

The project's final completion date of July 19th was not fully achieved. The Construction Manager at Risk (CMAR), Sundt Construction, intends to extend punch-list activities as well as the gathering of close-out documentation into August. Perimeter fencing is anticipated to be dismantled in mid-August. Close-Out documentation is being submitted by the Architect of Record (AOR) and Construction Manager at Risk (CMAR) for archiving and future reference. The submittal of all project documentation is anticipated to conclude in late August 2021.

- The dismantling of fencing started in early August with the removal of windscreens.

Chainlink panels were removed by mid-August. Work is proceeding on the installation of greenhouse glazing and water-proofing of the connection with the glass fiber reinforced concrete (GFRC) exterior panels. Punch-list items and final cleaning continue throughout the building.

- Tk1sc successfully concluded building commissioning activities for the New SEM on August 5th, 2021. A final commissioning report was made available to the Campus Project Team on August 9th, 2021. Alongside this report, the final compliance forms with California Title 24 building energy efficiency code were also completed. As part of the program, a seasonal review will be conducted in late 2021 inclusive of any deficiency corrections that might have occurred during the first months of building operations.

### **New Veterans' Resource Center & Students Activities Center Expansion**

- Crews were on-site completing the installation of waterproofing at the roof's drip edge and completing stucco façade painting as part of the remaining punch-list items. Building users have moved into the facility. The project has entered the financial and DSA close-out phase.

### **Veterans' Memorial Bridge, Plaza, and Tribute Garden**

- Handrails have been securely installed at the new stairs and path of travel leading from the New Tribute Garden to the front entrance of the Old SEM building, completing the added scope of work for the project.





# PROJECT STATUS REPORT — CYPRESS CAMPUS

## UPDATES ON CAMPUS PROJECTS - CYPRESS COLLEGE (Continued)

### Pond Refurbishment

- There are no updates during this reporting period.

### Fine Arts Building Renovation

- Following the completion of the 50% Construction Documents phase of design, the Campus Project Team and Construction Manager proceeded with the review of the completed drawings and specifications. Cost estimates were generated and reconciled in early June, which have resulted in an ongoing cost-reduction effort to align with the established project budget.
- DSA approved in mid-June the submitted Evaluation Design Criteria Report (EDCR) submitted by the design team in April. This approval clears the way for the submittal of the project for review and approval once the Construction Documents Phase is completed in October 2021.
- In late June, the Campus Project Team released a Request for Proposals for material testing and inspection services from the District's pool based on the required destructive testing per the approved EDCR.
- The hazardous materials testing and report development is ongoing and anticipated to be completed in Q3-2021.
- The building user group met with Dovetail, the project's furniture, fixtures, and equipment (FF&E) consultant for the determination of the needs for the project per programming and standards. Additional meetings were held in July and August to finalize furniture selection.
- The hazardous materials testing concluded in July. The final report was received on July 19th. The project design team is developing specifications to be included in the project in relation to the report's results.



VRC Completed Interior — August 2021

# PROJECT STATUS REPORT — CYPRESS CAMPUS

## UPDATES ON CAMPUS PROJECTS - CYPRESS COLLEGE (Continued)

### Swing Space Fine Arts (Old SEM)

- The schematic design phase for this project was completed on June 11th with the submittal of drawing and specification by the design team. The Campus Project Team is leading a review of the submitted package and will conduct a cost-reduction effort to align the scope with the project budget.
- The development of construction documents for this project has reached the 70% completion milestone. Reviews by the Campus Project Team are underway. The Team is also conducting an ongoing cost-reduction effort to align the scope of work with the established construction budget.



SEM Building; Future Swing Space for Fine Arts — August 2021

### Update / Improve Infrastructure IT Network Refresh Project

- The installation on network equipment continues throughout the Campus. Delays have occurred due to disruptions in supply chains to network core equipment. A change order will be submitted for an extension of the project completion in the upcoming months as the schedule impact of these disruptions are fully calculated.

### Campus-Wide Security Systems Upgrade

- The Campus Project Team is working on a procurement strategy utilizing cooperative purchasing contracts in accordance with Resolution No. 20/21-18, approved by the Board of Trustees on April 27th, 2021. The project phasing is underway, but likely will involve multiple phases to complete the project including new Video Management Software (VMS), replacement of existing cameras, and the addition of new cameras.



# AERIAL VIEW — FULLERTON CAMPUS PROJECTS



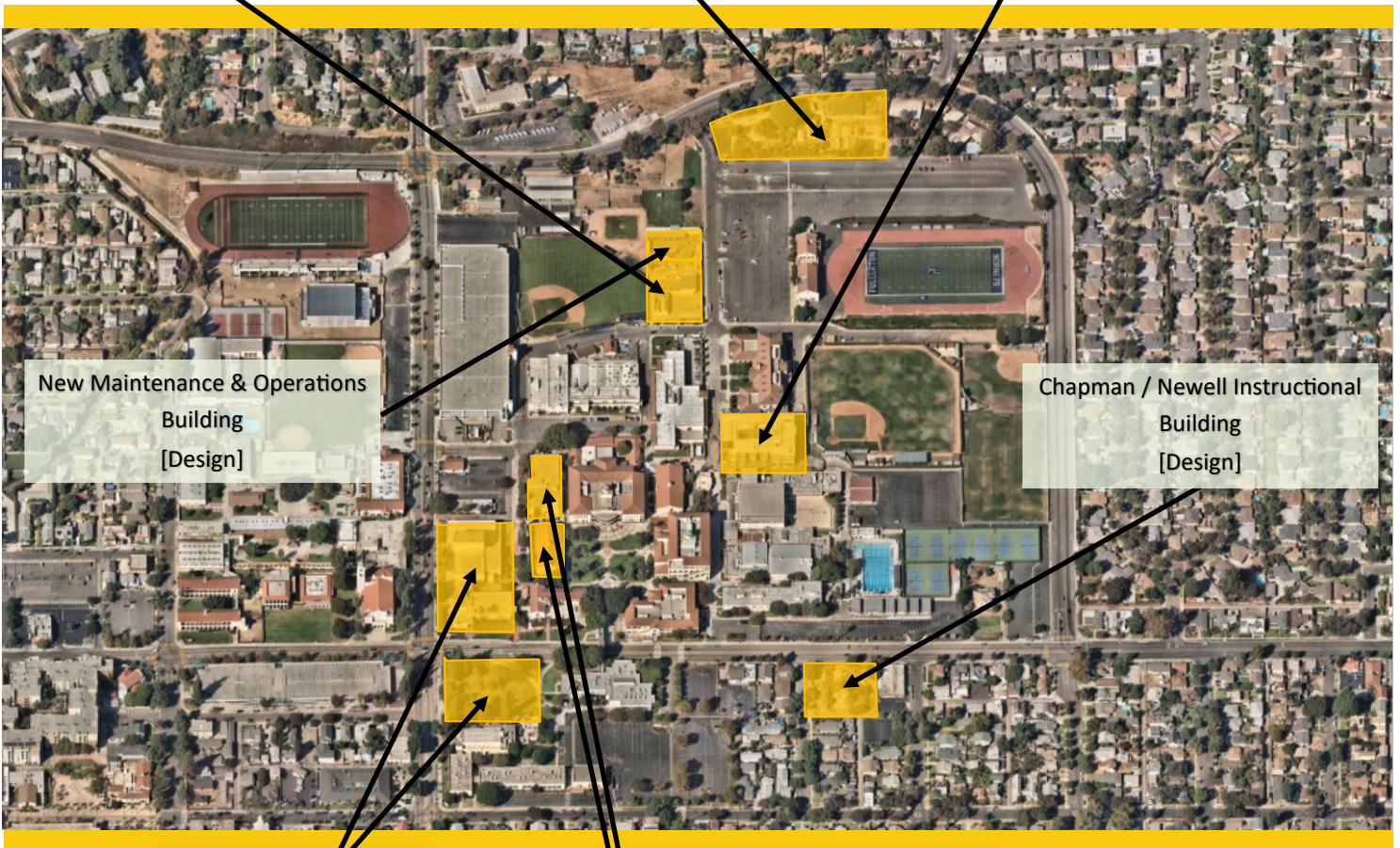
Central Plant Replacement and  
Expansion  
[Construction]



Greenhouse Replacement  
[Close-out]

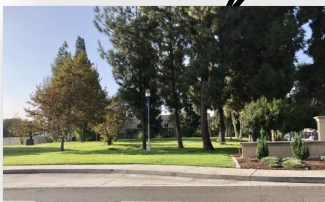


New Instructional Building  
[Construction]

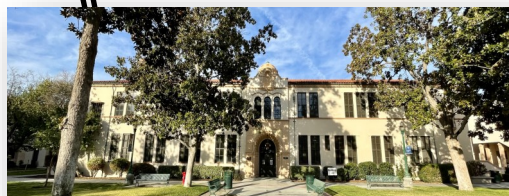


New Maintenance & Operations  
Building  
[Design]

Chapman / Newell Instructional  
Building  
[Design]



New Performing Arts Complex - Demolish Buildings  
1100 and 1300  
[Design—Design Development]



Renovate Buildings 300 & 500  
[Bidding]

► IT Network Refresh  
(Throughout Campus)  
[Implementation]





# PROJECT STATUS REPORT — FULLERTON CAMPUS

## GREENHOUSE REPLACEMENT CLOSE-OUT

Address	321 E. Chapman Ave. Fullerton, CA 92832
Project Manager	Larry Lara Fullerton College
Architect	Westberg + White
General Contractor	RT Contractor
Project Delivery Method	Design-Bid-Build
Project Gross Square Footage	3,853 GSF



### Project Overview

Replacement of the existing 1,440 square-foot greenhouse with a new 2,880-square-foot Venlo-style greenhouse, renovations to the existing restroom facilities, and upgrading pathway accessibility to meet current ADA code requirements, and striped parking spaces within the Horticulture Complex 1600.

### Budget & Construction Costs

- Funding Source ..... Measure J & Local
- Total Project Budget ..... \$1,652,105
  - Measure J (Est.) ..... \$834,381
  - Local (Strong Workforce Dev.) ..... \$817,724
- Construction Cost..... \$1,293,000
- Construction Percent Completion .....100.0%

### Schedule

- Design Start ..... Dec. 2019
- Construction Start ..... Jul. 2020
- Contracted Substantial Completion ..... Sep. 2020
- Targeted Substantial Completion ..... Apr. 2021
- Targeted Occupancy. .... Mar. 2021

#### Allowances and Contingencies Status

	In Contract	Approved	%	Balance	%
Allowance	\$50,000	\$50,000	100.0	\$-	0.0





# PROJECT STATUS REPORT — FULLERTON CAMPUS

## NEW INSTRUCTIONAL BUILDING CONSTRUCTION

Address	321 E. Chapman Ave. Fullerton, CA 92832
Project Manager	Oscar Saghie Fullerton College
Design-BUILDER	BN Builders, Inc. & Roesling Nakamura Terada Architects, Inc.
Project Delivery Method	Progressive Design-Build
Project Gross Square Footage	74,927 GSF
DSA Application A#	04-118108



### Project Overview

The New Instructional Building (New IB) will help meet Campus growth needs with the goal of consolidating an instructional division into a single building. The building will accommodate more than 40 classrooms and the division office services including staff offices. Scope of work for this project includes the expansion of the Central Plant.

### Budget & Construction Costs

- Total Project Budget (Est.) ..... \$54,067,013
  - New Instructional Building ..... \$53,588,031
  - Network Refresh..... \$278,982
  - HEERF.....\$200,000
- Funding Source .. Measure J & Federal Grant
  - Measure J..... \$53,867,013
  - Federal Grant (HEERF) ..... \$200,000
- Construction Cost..... \$35,985,926
- Construction Percent Completion .....93.3%

### Schedule

- Design Start .....Jun. 18, 2018
- Construction Start ..... Feb. 12, 2020
- Contracted Substantial Completion.....Aug. 2021
- Targeted Substantial Completion ..... Sep. 2021
- Targeted Occupancy. .... Oct. 2021

#### Allowances and Contingencies Status

	In Contract	Approved	%	Balance	%
Construction Contingency	\$1,082,149	\$376,296	34.8	\$705,853	65.2
Allowance	\$1,782,043	\$769,165	43.2	\$1,012,878	56.8



# PROJECT STATUS REPORT — FULLERTON CAMPUS

## CENTRAL PLANT REPLACEMENT & EXPANSION CONSTRUCTION

Address	321 E. Chapman Ave. Fullerton, CA 92832
Project Manager	Oscar Saghie Fullerton College
Design-Builder	BN Builders, Inc. & Roesling Nakamura Terada Architects, Inc.
Project Delivery Method	Progressive Design-Build
Project Gross Square Footage	2,028 GSF
DSA Application A#	04-118525



### Project Overview

Replacement and expansion of the central plant to accommodate planned new facilities and renovations and improve efficiency in servicing existing buildings. Project includes the replacement and expansion of the existing central plant to accommodate for three 600-ton high-efficiency water chillers and cooling towers.

### Budget & Construction Costs

- Funding Source.....Measure J
- Total Project Budget.....\$10,600,000  
Measure J (Est.).....\$10,600,000
- Construction Cost.....\$6,649,366
- Construction Percent Completion..... 95.7%

### Schedule

- Design Start ..... Jun. 18, 2018
- Construction Start ..... Feb. 12, 2020
- Contracted Substantial Completion ..... Jun. 2021
- Targeted Substantial Completion.....Aug. 2021
- Targeted Occupancy.....Aug. 2021

#### Allowances and Contingencies Status

	In Contract	Approved	%	Balance	%
Construction Contingency	\$195,037	\$13,763	7.1	\$181,274	92.9
Allowance	\$87,500	\$35,392	40.4	\$52,108	59.6



# PROJECT STATUS REPORT — FULLERTON CAMPUS

## RENOVATE BUILDINGS 300 & 500 BIDDING

**Address** 321 E. Chapman Ave.  
Fullerton, CA 92832

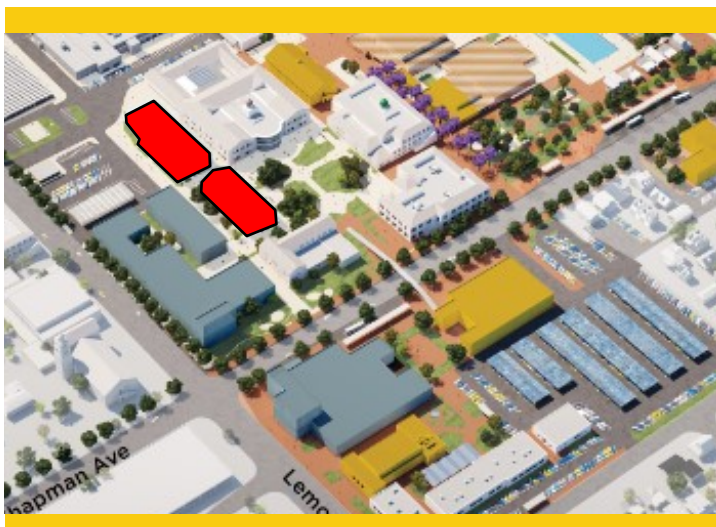
**Project Manager** Oscar Saghieh  
Fullerton College

**Architect** R2A Architecture

**General Contractor** TBD

**Project Delivery Method** Design-Bid-Build

**DSA Application A#** 04-118314



### Project Overview

Total renovation of Buildings 300 and 500, including historic consideration of Building 300. The renovated buildings will contain general classrooms, Computer Information Systems (CIS) laboratories, Academic Computing Technologies (ACT) laboratories, photography laboratories, dean and faculty offices, shared laboratories, and a lecture hall. The District and the Campus Project Team are assessing changes in the scope of the project, including the potential deferral of renovations at Building 500, based on continuing seismic evaluations for both buildings. Results of the assessment are anticipated in late September 2021. Changes in scope can jeopardize the availability of matching State funds for the project. District Staff will be leading a project update presentation to the Board of Trustees at the second meeting in September 2021. Refer to Updates on Campus Project pages ahead for more details.

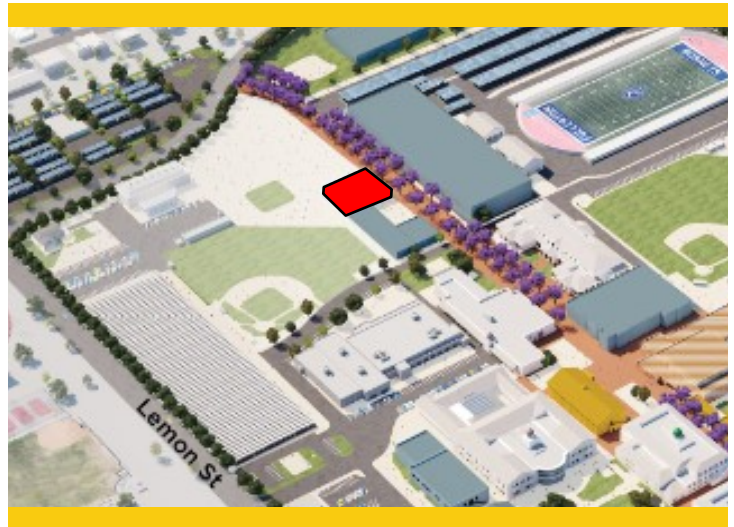
- Total Project Budget .....\$35,830,000
- Funding Source .....Measure J & State Capital Outlay
  - Measure J .....\$20,482,000
  - State Capital Outlay Funds .....\$15,348,000
- Project Gross Square Footage.....55,451 GSF
- Estimated Construction Start.....January 2022
- Targeted Completion .....September 2023



# PROJECT STATUS REPORT — FULLERTON CAMPUS

## NEW MAINTENANCE & OPERATION BUILDING DESIGN

<b>Address</b>	321 E. Chapman Ave. Fullerton, CA 92832
<b>Project Manager</b>	Oscar Saghie Fullerton College
<b>Design-BUILDER</b>	BN Builders, Inc. & Roesling Nakamura Terada Architects, Inc.
<b>Project Delivery Method</b>	Progressive Design-Build
<b>Project Gross Square Footage</b>	TBD



### Project Overview

The New Maintenance and Operations Building will centralize all M & O services into a single building located on the Main Campus. The building will include trade-specific workshops for maintenance, grounds, facilities, and custodial personnel while improving response time and efficiencies by locating the building on the Main Campus adjacent to the central plant. Project is anticipated to be bundled for bidding with the Chapman / Newell Instructional Building.

- Total Project Budget .....\$14,758,944
- Funding Source .....Measure J & Local Funds
  - Measure J .....\$6,758,944
  - Local Funds.....\$8,000,000
- Estimated Construction Start.....Winter 2022
- Targeted Completion .....Winter 2023





# PROJECT STATUS REPORT — FULLERTON CAMPUS

## CHAPMAN / NEWELL INSTRUCTIONAL BUILDING DESIGN

<b>Address</b>	321 E. Chapman Ave. Fullerton, CA 92832
<b>Project Manager</b>	Oscar Saghieh Fullerton College
<b>Design-Builder</b>	BN Builders, Inc. & Roesling Nakamura Terada Architects, Inc.
<b>Project Delivery Method</b>	Progressive Design-Build
<b>Project Gross Square Footage</b>	TBD



### Project Overview

- The building at the intersections of Chapman Avenue and Newell Street will potentially provide improved facilities to Student Resources, CalWORKs, Health Services, the Veterans' Resource Center (VRC), and Instructional Programs. Project is anticipated to be bundled for bidding with the New M&O Building.
- Total Project Budget .....\$21,985,777
- Funding Source .....Measure J & Local Funds
  - Measure J .....\$21,985,777
- Estimated Construction Start.....Winter 2022
- Targeted Completion .....Winter 2023

# PROJECT STATUS REPORT — FULLERTON CAMPUS

## NEW PERFORMING ARTS COMPLEX - DEMOLISH BUILDINGS 1100 AND 1300

### DESIGN—DESIGN DEVELOPMENT

<b>Address</b>	<b>321 E. Chapman Ave. Fullerton, CA 92832</b>
<b>Project Manager</b>	<b>Oscar Saghie Fullerton College</b>
<b>Architect</b>	<b>Pfeiffer Partners Architects, Inc.</b>
<b>Project Delivery Method</b>	<b>Design-Bid-Build</b>



### Project Overview

This project addresses the demand for enrollments in the performing arts programs by constructing a new complex bringing music, drama, theater arts, and communication programs together into a single facility. The new building replaces outdated facilities with electrical deficiencies and outmoded configurations. The new structure will take advantage of the potential use of commonly required spaces to improve overall utilization and flexible spaces that help programs in meeting higher demands anticipated in the near future. At the current stage of design, early estimates suggest the need for budgetary revisions in the order of \$40-\$50 million to match project programming and equipment requirements. As this project is integral to the Campus master plan and changes in scope can jeopardize the availability of matching State funds for the project, assessments are underway for the increase of Measure J funding. Transfers of funds will be completed from lower-priority projects at the Campus. District Staff will be leading a project update presentation to the Board of Trustees at the second meeting in September 2021. Refer to Updates on Campus Project pages ahead for more details.

- Preliminary Total Project Budget..... \$72,273,153
- Funding Source ..... Measure J & State Capital Outlay
  - Measure J ..... \$30,724,153
  - State Capital Outlay Funds ..... \$41,549,000
- Project Gross Square Footage..... 66,765 GSF
- Estimated Construction Start..... Summer 2023
- Targeted Completion ..... Summer 2025



# PROJECT STATUS REPORT — FULLERTON CAMPUS

## UPDATE/IMPROVE INFRASTRUCTURE

### VARIOUS STAGES

<b>Address</b>	<b>321 E. Chapman Ave. Fullerton, CA 92832</b>	<b>Total Project Budget</b>	<b>\$31,607,054 (Measure J)</b>
		<b>Total Budget Allocated</b>	<b>\$8,444,702 (Measure J)</b>
<b>Number of Projects</b>	<b>3</b>	<b>Funding Source</b>	<b>Measure J &amp; Capital Outlay</b>

### General Overview

Projects to address infrastructure improvements or upgrades throughout the Campus. Funds are allocated to projects as needs are identified.

### IT Network Refresh Project Overview

#### IMPLEMENTATION

Assessment of Campus data network infrastructure to identify necessary upgrades, and changes that will enable supporting future Campus needs; specifically addressing wired, wireless, voice, and video networks. The scope includes replacing network core switches, providing a more responsive support structure, preparing for cloud computing, and adaptation of voice over IP systems across the District. For costs related to the New Instructional Building please refer to page 18 of this report.

- Project Budget..... \$13,021,817
  - Current Implementation (Measure J) ..... \$3,132,039
  - Current Implementation (Capital Outlay) ..... \$5,300,799
  - Upcoming Phases (Measure J) ..... \$4,588,979
- Funding Source ..... Measure J & Capital Outlay Funds
- Project Delivery Method ..... California Multiple Award Schedule (CMAS)
- Design Implementation..... VectorUSA
- Architect..... Shandam Consulting
- Project Management ..... District IS / PlanNet Consulting
- Design Implementation Start..... November 2019
- Targeted Completion ..... May 2022



# PROJECT STATUS REPORT — FULLERTON CAMPUS

## UPDATES ON CAMPUS PROJECTS - FULLERTON COLLEGE

### Campus

- Construction work at active project sites proceeds during the current COVID-19 protection guideline directives from the State's Governor. BN Builders is following recommendations from the Centers for Disease Control (CDC) on social distancing and hygiene practices for all its employees and subcontractors. As mitigation measures to prevent COVID-19 outbreaks, temperature checks are being performed before personnel are walking on-site and stretch and flex. Work is being segmented in areas where personnel are asked to remain during a day's work to complete their tasks. Visitors are provided a wristband as a visible check that they have provided contact details before accessing the site or meetings related to the project.

### Greenhouse Replacement

- There are no updates during this reporting period.

### New Instructional Building

- In June, sitework continued around the building and will proceed until August 2021. Stormwater catch basins are set around the new structure. The reinforcement bars have been laid and assembled for the retaining wall extending along the north end of the construction site close to Building 1400, where concrete was poured in late May. Work on the tower's facade is completed as of mid-June with the application of the brown, and final coats of plaster to the west and south elevations.
- In July, the east and west fire lanes were closed to allow for soil compaction, installation of reinforcement bars, and the framing of wood formwork for concrete pours for hardscape features and retaining walls. The initial concrete pours for the paths of travel and fire lanes on the perimeter of the building continued to the end of July. Underground irrigation lines were installed around the building and landscaping is being placed as concrete pours are done. The dome water barrier is in place. The tile design placement was completed by the end of the month. Work on the courtyard neared completion in July with all landscaping installed and tile work on the feature fountain was completed by the middle of July.
- HVAC equipment was installed on the roof level. Crews worked to secure the equipment. The HVAC is comprised of four air handling units and ducts that distribute cooled or heated air throughout the building.
- The board stamping of plaster in the courtyard started early in March. Scaffolding was dismantled in this space in mid-March upon completion and was followed by window testing for water-tightness. The installation of the plaster lath was in progress on the south side of the building. The framing of exterior walls on stairwells progressed although there were slight delays in materials delivery due to





# PROJECT STATUS REPORT — FULLERTON CAMPUS

## UPDATES ON CAMPUS PROJECTS - FULLERTON COLLEGE (Continued)

COVID-19 supply chain disruptions.

- Courtyard scaffolding was dismantled. Scratch brown and finished coat with integral coloring was applied to all exterior surfaces in the courtyard. Testing for windows and water tightness occurred during this period. Site work began in April encompassing soil leveling and compaction in preparation for landscaping around the building. Scaffolding was dismantled on the west side of the building



New Instructional Building Interior Hallway — August 2021

upon completion of the plaster application on the surface. Activities related to the plaster application were completed by the end of April. Framing occurred at the tower and finished by the end of March. Copper gutters have been installed around the building and downspout work commenced after that. The installation of decorative tiling occurred during this period on the western façade of the building.

- By August, all scaffolding around the building's exterior has been dismantled as work has successfully concluded along the upper elevations of the building facade. The remaining exterior work in the building is focused on the west and north portals. The tile installation at the west portal is completed and will proceed on the remaining two entry points by the end of the month.
- Site work is nearing completion as the north and west fire lane concrete pours were completed in late July. The fire sprinkler system and the fire alarm testing started in mid-July and is anticipated to end in early August. Exterior security monitoring cameras have been installed and will be programmed early in the month. Paver installation followed around the building with an anticipated completion in the first or second week of the month. Safety railing for exterior ramps is anticipated to be installed this month.
- The placement of tile in the courtyard completed alongside all exterior window sills on the first and second floors. Door hardware installation was also completed at all exterior and courtyard doors.
- The preparations for the closing of Storm Water Pollution Prevention Plan (SWPPP) permits are underway. A punch-list walk took place to note items that need to be addressed before the closing of



# PROJECT STATUS REPORT — FULLERTON CAMPUS

## UPDATES ON CAMPUS PROJECTS - FULLERTON COLLEGE (Continued)

these permits upon project completion in September. Landscape irrigation and drip watering systems are in progress with a target completion in the second week of August.

- Work on the inside of the building is nearing completion. On level 1, tiling and Campus medallion installation commenced in June at the main building entrance. Meanwhile, lecterns are installed at this level and level 2 simultaneously inclusive of audiovisual controls.
- Electrical receptacles and cover plates were successfully installed on levels 2 and 3. Work is completed at the main and intermediate distribution frame (MDF/IDF) rooms and the installation of Wireless Access Points (WAPs) has been completed at all three levels.
- The final cleaning of hallways at the buildings' second and third floors was completed in mid-July. Crews moved into the individual classrooms, offices, and other support spaces to complete cleaning activities. At the building stairwells, the remaining railing components are anticipated to be installed earlier in the month. Computer furniture is anticipated to be delivered to the site starting on August 20th. The installation will take place in the last week of August and carry on into early September. All other furniture will be delivered to the building in early September with installation to proceed soon thereafter. Dovetail Consultants is coordinating the deliveries, assembly, and installation of furniture to the building. Shipments are anticipated to start in the second week of August.
- The project close-out activities are proceeding. The electrical systems at all floors were inspected and tested in July in preparation for the final punch list walks. Punch walks were conducted on June 21st with the project's AOR, Campus Facilities, and the General Contractor. Training of Campus Facilities personnel was scheduled for late July. A final walk with subcontractors and manufacturers for roof installation was conducted on July 7th. A final report noting any installation comments is forthcoming. The electronic documentation such as manuals, as-builts, among others, is being reviewed and



**New Instructional Building Construction Progress — August 2021**

# PROJECT STATUS REPORT — FULLERTON CAMPUS

## UPDATES ON CAMPUS PROJECTS - FULLERTON COLLEGE (Continued)

approved by the AOR and will be provided for uploading to PROMPT. Attic stock materials were handed over to Campus facilities in early July.

- Testing and Balancing (TAB) activities are underway for the building's chilled water supply to the HVAC equipment. In August air flows will be tested and adjusted throughout the building. Training for Campus Facilities personnel was completed on July 26th, 2021. Videos of the sessions and all other pertinent information will be turned over to the District and Campus as part of the close-out documents for the project.



New Instructional Building Construction Progress —August 2021

- Substantial completion for the building is anticipated to be achieved on September 17th. The procurement of ADA-accessible mechanisms for window openings has a 9 to 12-week lead time upon placement of the order. Final completion is potentially impacted as it cannot be achieved until this item is fully installed at one window in each room. The Campus Project Team is working on strategies to mitigate impacts to the project's schedule as a result of this accessibility requirement.
- The move-in date for building users is tracking during October 2021. Preparations are also underway for opening ceremonies to take place that month.
- Recessed entrance floor mats were installed at all the building entrances. Plumbing system flushing started in early August. This activity was conducted in coordination with HVAC duct and building flushing. Final cleaning continues on the first floor of the building and exterior courtyard.
- Paver installation on the fire lanes surrounding the building continues in early August. This activity is anticipated to be complete by the middle of the month. Railing for ADA ramps and retaining walls was delivered to the site. The installation will take place during the second week of August. The placement of landscaping shrubs and trees was successfully completed in early August. Irrigation system testing is underway around the building.

# PROJECT STATUS REPORT — FULLERTON CAMPUS

## UPDATES ON CAMPUS PROJECTS - FULLERTON COLLEGE (Continued)

### Central Plant Replacement & Expansion

- Point-to-point testing for installed equipment was completed in May. A preliminary sequence test for controls and start-up took place late last month. Testing and Balancing (TAB) started at the building. Pipe labeling and insulation installation concluded in late June into early July. Fire alarm testing was also underway during that time. A punch-list walk was conducted with the architect of record and engineers in early June, followed by a similar walk with Campus Facilities Representatives in late June. Commissioning agent visits and inspections are taking place bi-weekly.
- Commissioning activities that began in mid-July will continue into August. The project close-out is progressing at a steady pace. Training has been completed for Campus Facilities personnel. All electronic documentation is being reviewed and approved by the project's AOR and commissioning agent. Once approved, it will be submitted for uploading to PROMPT. The fine-tuning of equipment in preparation for functional testing was underway in late July. Adjustments to the sequence of functions also took place to match the operational requirements from Campus Facilities.
- Functional testing is expected to take place with Enovity, the building's commissioning agent, from late July to early August. Substantial completion was achieved on August 13th, 2021. DSA documentation is being gathered for the completion of the 6-series forms which mark the completion of all construction work in accordance with approved documents.



Central Plant Construction Progress —August 2021

### Renovate Buildings 300 & 500

- In June, CRB Architects and HL Construction Management provided a revised estimate for the revised scope of work intended to be re-bid. The Campus Project Team is leading review sessions with the Architect of Record, DSA, the District, and MAAS to evaluate plausible pathways to consider before re-bidding the project. Part of this effort included a session with the San Diego office of DSA. From this meeting, the design and project teams obtained valuable details on allowable changes to the scope of work like seismic rehabilitation to the buildings; these changes will not necessitate a secondary review and approval by the State agency. Similarly, the District met with the California Community Colleges Chancellor's Office (CCCCO) to



# PROJECT STATUS REPORT — FULLERTON CAMPUS

## UPDATES ON CAMPUS PROJECTS - FULLERTON COLLEGE (Continued)

review potential scenarios and their impact on funding availability from the State. Rodriguez Engineering is simultaneously conducting an analysis of potential seismic upgrades. This study is to be submitted to the CCCC for consideration in the steps ahead for the project. Project Teams are assessing changes in the scope of the project, including the potential deferral of renovations at Building 500. Teams anticipate reaching a final decision in the early weeks of October of 2021.

- The ASCE-Tier 1 seismic evaluation for Buildings 300 and 500 continues this month. The final report is anticipated to be complete by late August for review by the Campus Project Team. The results will also be shared with DSA and CCCC for the evaluation of the inclusion of voluntary seismic rehabilitation tasks in the project's scope of work.

### **New Maintenance & Operations Building**

- Four companies submitted responses to the RFP/Q for the design and construction of this building in conjunction with the Chapman/Newell Instructional Building. One firm was disqualified and the other three were invited for interviews with a selection committee in late June. Upon completion of the final evaluation process a selection was in favor of BN Builders and RNT Architects, which in turn, was presented to the Board of Trustees in late July. Additionally, an addendum was issued for the request for proposals (RFP) related to commissioning services for the building.
- Responses from vendors identified on the District's list of pre-qualified commissioning agents were due in late July. The request for proposals (RFP) for commissioning agents (CxA) to the Chapman/Newell Instructional Building and New M&O Building concluded on July 30th, 2021. Five firms submitted proposals for the section team's review and evaluation. Initial selection meetings were held in early August. A selection will be presented to the Board of Trustees for authorization to enter into a contract in September.

### **Chapman / Newell Instructional Building**

- Four companies submitted responses to the RFP/Q for the design and construction of this building in conjunction with the Chapman/Newell Instructional Building. One firm was disqualified and the other three were invited for interviews with a selection committee in late June. Upon completion of the final evaluation process a selection was in favor of BN Builders and RNT Architects, which in turn,



Chapman / Newell Instructional Building Façade Sketch—RNT Architects

# PROJECT STATUS REPORT — FULLERTON CAMPUS

## UPDATES ON CAMPUS PROJECTS - FULLERTON COLLEGE (Continued)

was presented to the Board of Trustees in late July. Additionally, an addendum was issued for the request for proposals (RFP) related to commissioning services for the building.

- Responses from interested vendors part of the District's pre-qualified list of commissioning agents are due in late July. The request for proposals (RFP) for commissioning agents (CxA) to the Chapman/Newell Instructional Building and New M&O Building concluded on July 30th, 2021. Five firms submitted proposals for the selection team's review and evaluation. Initial selection meetings were held in early August. A selection will be presented to the Board of Trustees for authorization to enter into a contract in September.

### **New Performing Arts Complex**

- The schematic design phase concluded in early June with the sign-off from the building user group on the initial design lay-outs for the new complex. The design development of the building will proceed in the upcoming months in tandem with easement studies and requirements for the Southern California Edison transformers and utility meters in the vicinity of the project. The design and Campus project teams have concluded the preliminary drawing phase of design. Drawings and specifications were submitted to the California Community Colleges Chancellor's Office (CCCCO) on June 30th for their review and approval of additional funding for the working drawings phase of design. The revised design includes changes to restroom and lobby sizes, as well as improved building efficiency in line with JCAF-32 programming requirements.
- Design development continued in July with a meeting on the 23rd between the Campus project team and design team to discuss building facade parameters, and interior space components. Weekly meetings were anticipated to be reinstated in September upon approval of additional funding for the second half of the design phase by the CCCCCO and the State's Department of Finance. A preliminary meeting with DSA for the review of the building's design in preparation for the Construction Documents Submittal is anticipated to take place in late August. The Design Development phase final deliverable is scheduled to be delivered on September 1st, 2021.



**Future Home of the New Performing Arts Complex**

# PROJECT STATUS REPORT — FULLERTON CAMPUS

## UPDATES ON CAMPUS PROJECTS - FULLERTON COLLEGE (Continued)

- The Campus Project Team continues working in collaboration with Southern California Edison for the relocation of an existing transformer and underground electrical duct bank currently located within the footprint of the future building. An application for the scope of work was submitted to the local utility company and proceeded following a separate design and process spearheaded by this company in coordination with the project's design team. Planning is in progress for the construction activities related to this relocation.
- Pfeiffer Partners Architects, the project's Architect of Record (AOR), completed initial studies on potential building facades and elevations. The results were presented to the building user group in late July for review and feedback. This month, the design team also completed an update to the construction cost estimate after the first major stage of design, 100% schematic design. The Campus Project Team will be conducting sessions to review the presented costs and prepare pathways for the potential adjustment of scope or budgets based on the findings.
- An addendum was issued for the Request for Proposals (RFP) related to commissioning services for the building. Responses from interested vendors part of the District's pre-qualified list of commissioning agents was due in early August.
- O'Connor CM conducted a peer review of the construction cost estimate provided by Pfeiffer after the 100% Schematic Design documents. This independent review of estimated costs will provide additional details on market conditions and assumptions of potential project costs at the time of construction onset.

### **Update / Improve Infrastructure IT Network Refresh Project**

- The installation on network equipment continues at the New Instructional Building. Upon completion of this scope of work, the building will be integrated to the Campus network. Activities were anticipated to be completed in mid-August.





# AERIAL VIEW — ANAHEIM CAMPUS PROJECTS



Secondary MDF Room  
[Close-Out]



Anaheim Campus Tower  
First Floor Life/Safety Ren-  
ovation  
[Planning]

Swing Space Projects / Interim  
Housing  
[Planning]

- ▶ Develop Interior and Exterior Signage [Planning]
- ▶ IT Network Refresh (Throughout Campus)  
[Implementation]





# PROJECT STATUS REPORT — ANAHEIM CAMPUS

## UPDATE / IMPROVE INFRASTRUCTURE—SECONDARY MDF ROOM

### CLOSE-OUT

**Address** 1830 W. Romneya Dr.  
Anaheim, CA 92801

**Project Manager** Cora Baldovino  
District

**Architect** Rodriguez Engineering

**General Contractor** Howard Ridley

**Project Delivery** CUPCAA

**Project Gross** >1,000 GSF



### Project Overview

The installation of a secondary Main Distribution Frame (MDF) room will be at the northeast corner of the existing Campus Utility Plant Building mezzanine level. This facility will support communications at the Campus in case of an outage at the current MDF room. Involves new structural steel framing to support the installation of new frame racks.

- Preliminary Total Project Budget ..... \$105,407
- Funding Source..... Measure J
  - Measure J ..... \$105,407
- Construction Start ..... November 2020
- Completion ..... April 2021



# PROJECT STATUS REPORT — ANAHEIM CAMPUS

## SWING SPACE PROJECTS / INTERIM HOUSING

### PLANNING

**Address** 1830 W. Romneya Dr.  
Anaheim, CA 92801

**Project Manager** Richard Williams  
District Director  
Facilities, Planning, and  
Construction

**Architect** TBD

**Project Delivery** TBD

**Method**



### Project Overview

As a result of the upcoming project to complete extensive repairs due to water intrusion at the Upper Deck Parking Lot, there is a need to temporarily relocate classrooms and facilities located on the 1st floor of the Anaheim-NOCE Campus before the start of construction activities. These new temporary modular buildings will allow for NOCE's instruction activities to continue during the repairs to the existing structure. Included are the design, assembly, construction, rent, and dismantling of 12 modular classrooms and associated facilities.

- Total Project Budget .....\$2,000,000
- Funding Source .....Measure J
- Project Gross Square Footage.....TBD
- Estimated Construction Start.....Spring 2022
- Targeted Construction Completion .....Summer 2022
- Temporary Structures Anticipated Dismantlement .....Fall 2024



# PROJECT STATUS REPORT — ANAHEIM CAMPUS

## DEVELOP INTERIOR AND EXTERIOR SIGNAGE

### PLANNING

Address	1830 W. Romneya Dr.
Project Manager	Richard Williams
Manager	District Director
Architect	Facilities, Planning, and Westberg + White
Project Delivery Method	TBD



### Project Overview

Furnish and install new informational and wayfinding signage at indoor and outdoor spaces throughout the Anaheim Campus based on a uniform design standard under development by Westberg White Architecture.

- Total Project Budget .....\$363,200
- Funding Source .....Measure J & Local
  - Measure J .....\$313,800
  - Local .....\$49,400
- Project Gross Square Footage.....N/A
- Estimated Construction Start.....Spring 2021
- Targeted Completion .....Fall 2021



# PROJECT STATUS REPORT — ANAHEIM CAMPUS

## ANAHEIM CAMPUS TOWER FIRST FLOOR LIFE/SAFETY RENOVATION PLANNING

**Address** 1830 W. Romneya Dr.  
Anaheim, CA 92801

**Project Manager** Richard Williams  
District Director  
Facilities, Planning, and  
Construction

**Architect** TBD

**Project Delivery Method** TBD



### Project Overview

Based on a recent study on water intrusion completed in late 2018 by R2A Architecture in collaboration with KPFF, Rodriguez Engineering, Inc. and Allana Buick & Bers, Inc. several extensive repairs are needed to mitigate and limit the points of water intrusion through the upper deck parking lot surrounding the Anaheim tower.

- Total Project Budget .....\$10,913,000
- Funding Source .....Measure J & State
  - Measure J .....\$2,183,000
  - State .....\$8,730,000
- Project Gross Square Footage.....61,952 ASF
- Estimated Construction Start.....Spring 2022
- Targeted Completion .....Fall 2024





# PROJECT STATUS REPORT — ANAHEIM CAMPUS

## UPDATE/IMPROVE INFRASTRUCTURE

### IMPLEMENTATION

<b>Address</b>	<b>1830 W. Romneya Dr. Anaheim, CA 92801</b>	<b>Total Project Budget</b>	<b>\$1,766,540 (Measure J)</b>
		<b>Total Budget Allocated</b>	<b>\$1,105,407 (Measure J)</b>
<b>Number of Projects</b>	<b>2</b>	<b>Funding Source</b>	<b>Measure J &amp; Capital Outlay</b>

### General Overview

Projects to address infrastructure improvements or upgrades throughout the Campus. Funds are allocated to projects as needs are identified.

### IT Network Refresh Project Overview

#### IMPLEMENTATION

Assessment of Campus data network infrastructure to identify necessary upgrades, and changes that will enable supporting future Campus needs; specifically addressing wired, wireless, voice, and video networks. Design of a new network will account for the District's needs specific to logical infrastructure for the next 10 years. Physical infrastructure will also account for the District's needs for the next 20 years. The scope includes replacing network core switches, providing a more responsive support structure, preparing for cloud computing, and adaptation of voice over IP systems across the District.

- Project Budget..... \$5,432,152
  - Current Implementation (Measure J) ..... \$754,209
  - Current Implementation (Capital Outlay) ..... \$4,432,152
  - Upcoming Phases (Measure J) ..... \$245,791
- Funding Source ..... Measure J & Capital Outlay Funds
- Project Delivery Method ..... California Multiple Award Schedule (CMAS)
- Design Implementation..... VectorUSA
- Architect..... Shandam Consulting
- Project Management ..... District IS / PlanNet Consulting
- Design Implementation Start..... November 2019
- Targeted Completion ..... May 2022



# PROJECT STATUS REPORT — ANAHEIM CAMPUS

## UPDATES ON CAMPUS PROJECTS - ANAHEIM CAMPUS

### **Secondary MDF Room**

- Construction activities have successfully concluded for this project. The installation of equipment in progress is part of the IT Network Refresh project. This project has entered the close-out phase.

### **Swing Space Projects / Interim Housing**

- MRY Architects concluded an assessment of space, furniture, and equipment needs for the relocation of the Cypress College Culinary Arts department currently housed at the Anaheim Campus. A brainstorming meeting was held on June 24th with the user group for suggesting options for a new space to the department. This valuation and brainstorming will aid in the planning process for the needed relocation of the department due to the upcoming renovation of the upper deck parking area part of the Anaheim Campus Tower First Floor Life / Safety Renovation.
- In June, preparations were underway for the release of a request for proposals (RFP) to the pool of District pre-qualified architects for the planning, design, and construction administration of the scope of work related to the temporary relocation of classrooms and offices at the first floor of the Anaheim Campus. The RFP was anticipated to be released in late July, and planning is expected to start by the middle of the third quarter of 2021.
- A project site walk was carried on July 19th as part of the Architect of Record (AOR) Request for Proposals (RFP). An addendum was also issued for this RFP in the last week of July. Responses from architectural firms part of the District's list of pre-qualified companies are anticipated in mid-August.

### **Anaheim Campus Tower First Floor Life/Safety Renovation**

- In June, preparations were underway for the release of a request for proposals (RFP) to the pool of District pre-qualified architects for planning, design, and construction administration of the scope of work relating to the renovations of the upper deck and first floors at the Anaheim Campus. The RFP was anticipated to be released in late July, upon approval of funds from the State's Department of Finance and the California Community Colleges Chancellor's Office (CCCCO). Planning and scope verification are expected to start by the middle of the third quarter of 2021.
- A project site walk was carried out on July 20th as part of the Architect of Record (AOR) Request for Proposals (RFP). Interested firms had the opportunity to observe the main challenges to be addressed as part of the project's construction scope of work. Responses from interested firms are anticipated in mid-August 2021.



# PROJECT STATUS REPORT — ANAHEIM CAMPUS

## UPDATES ON CAMPUS PROJECTS - ANAHEIM CAMPUS (Continued)

- The California Community Colleges Chancellor's Office (CCCCO) and the State's Department of Finance released an update on funding availability for the initial design phase. The Campus received confirmation of funding for the first phase of design with a contribution of 78% of the costs from the State and the remaining 22% from Measure J. Upon completion of the Request for Proposals (RFP) or Architect of Record, contracting will take place with the selected firm.

### **Develop Interior and Exterior Signage**

- Westberg and White completed initial designs and renderings for exterior signage for the Anaheim Campus. A conceptual presentation was delivered to the Board of Trustees in July.

### **Update / Improve Infrastructure**

#### **IT Network Refresh Project**

- The installation on network equipment continues throughout the Campus. Delays have occurred due to disruptions in supply chains to network core equipment. A change order will be submitted for an extension of the project completion in the upcoming months as the schedule impact of these disruptions are fully calculated.



# COMPLETED PROJECTS

- CYPRESS COLLEGE
- FULLERTON COLLEGE
- NOCE—ANAHEIM CAMPUS & DISTRICT OFFICES





# COMPLETED PROJECTS

## Cypress College

Project Name	Funding Sources	Final Project Cost	Completion Date
Swing Space Projects - Gym II Improvements	Measure J	\$153,397	July 2018
Swing Space Projects - Parking Lot 5 Realignment	Measure J	\$1,965,399	September 2018



Completed Parking Lot 5 Realignment from the Library & Learning Resource Center (LLRC) at Cypress College

Mass Communication & Security Systems Upgrade: Safety Film	Measure J	\$145,772	January 2019
Mass Communication & Security System Upgrade: Door Replacement	Measure J	\$50,898	January 2019
Update / Improve Infrastructure: Central Plant Upgrades	Measure J	\$58,768	October 2020
Athletic Field Realignment - Baseball Field Improvements	Measure J and Local	\$1,932,981 (Measure J) \$171,000 (Local)	May 2021



Completed Parking Lot 5 Realignment from the Library & Learning Resource Center (LLRC) at Cypress College

# COMPLETED PROJECTS

## Fullerton College

Project Name	Funding Sources	Final Project Cost	Project Start Date	Completion Date
Update and Improve Infrastructure / Buildings 300-500 Sewer Line	Measure J and Scheduled Maintenance	\$444,702	May 2018	July 2020



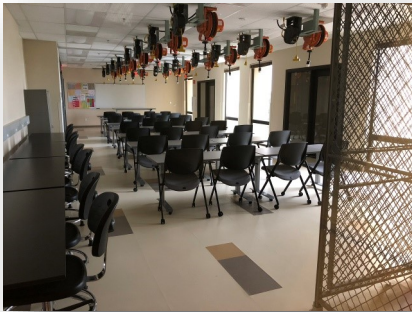
Completed Sewer Line Replacement to Buildings 300 and 500 at Fullerton College



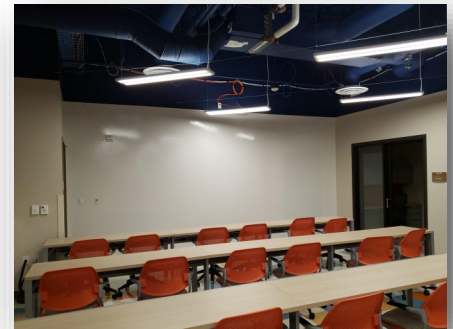
# COMPLETED PROJECTS

## NOCE—Anaheim Campus & District Offices

Project Name	Funding Sources	Final Project Cost	Completion Date
5th Floor CTE Laboratory and 2nd Floor Room 215	Measure J	\$640,736	September 2018
7th and 10th Floors Buildout	Measure X and Measure J	\$4,610,152 (Meas. X) \$915,932 (Meas. J)	June 2019



Views of the Completed 5th Floor CTE Lab for North Orange Continuing Education at Anaheim Campus



Completed lobby and co-working spaces on the 7th and 10th Floors at Anaheim Campus



# FINANCIAL REVIEW

- Capital Projects Update
- Estimated Project Budgets
- 90-Day Look Ahead Schedule



# CAPITAL PROJECT UPDATES

**North Orange County Community College District  
Measure J  
Capital Projects Update  
As of July 31, 2021**

**Bond Authorization:**

Bond Authorization	574,000,000	100.00%
Bonds Sold - Series A + B	250,000,000	43.55%
<b>Available Principal Amount of Bonds</b>	<b>324,000,000</b>	<b>56.45%</b>

**Bond Funding Sources (Budget):**

		Actual Received	Remaining Balance
Bond Authorization	574,000,000	250,000,000	324,000,000
Estimated Net Interest Earnings	11,000,000	9,251,063	1,748,937
<b>Totals</b>	<b>585,000,000</b>	<b>259,251,063</b>	<b>325,748,937</b>

**Cost Status:**

Campus	Total Budget	%	Actual Expenses to Date	Remaining Balance
Anaheim Campus	23,607,800	4.03%	2,402,354	21,205,446
Cypress Campus	225,921,200	38.62%	111,107,937	114,813,263
Fullerton Campus	311,126,400	53.18%	57,374,566	253,751,834
District Expenses				
• Program Management	20,000,000	3.42%	5,656,681	14,343,319
• Bond Issuance Cost	3,544,600	0.61%	1,301,760	2,242,840
• Other Bond Expense	800,000	0.14%	368,416	431,584
<b>Totals</b>	<b>585,000,000</b>	<b>100.00%</b>	<b>178,211,714</b>	<b>406,788,286</b>



# ESTIMATED PROJECT BUDGETS

## CYPRESS CAMPUS

### CURRENT PROJECTS

### PROJECT BUDGET/VARIANCE REPORT—CYPRESS

CURRENT PROJECTS	Measure J Budget MAY FY 2020-21	Measure J Budget JUL FY 2021-22	Variance	Measure J Expenses	Balance
New Science, Engineering, and Mathematics Building	\$ 94,068,202	\$ 94,068,202	\$ -	\$ 87,706,946	\$ 6,361,256
New Veterans' Resource Center & Student Activities Center Expansion	\$ 13,411,167	\$ 13,411,167	\$ -	\$ 12,051,042	\$ 1,360,125
Veterans' Memorial Bridge and Tribute Garden	\$ 100,800	\$ 100,800	\$ -	\$ -	\$ 100,800
Baseball Field Improvements	\$ 1,932,981	\$ 1,932,981	\$ -	\$ 1,915,089	\$ 17,892
Swing Space Projects	\$ 1,034,003	\$ 1,034,003	\$ -	\$ -	\$ 1,034,003
Swing Space Fine Arts (OLD SEM)	\$ 2,699,459	\$ 5,626,285	\$ 2,926,826	\$ 20,000	\$ 5,606,285
Swing Space Tech I/ Tech III (Old SEM)	\$ -	\$ -	\$ -	\$ -	\$ -
Swing Space Culinary Arts (Temp. Facility)	\$ -	\$ -	\$ -	\$ -	\$ -
Fine Arts Building Renovation	\$ 33,413,861	\$ 33,413,861	\$ -	\$ 462,165	\$ 32,951,696
Update/Improve Infrastructure	\$ 8,118,406	\$ 8,108,406	\$ (10,000)	\$ -	\$ 8,108,406
Update/Improve Infrastructure (New SEM)	\$ 3,055,711	\$ 3,055,711	\$ -	\$ 2,979,737	\$ 75,974
Update/Improve Infrastructure (IT)	\$ 5,101,587	\$ 5,101,587	\$ -	\$ 1,656,868	\$ 3,444,719
Update/Improve Infrastructure (VRC/SAC)	\$ 1,144,756	\$ 1,144,756	\$ -	\$ 1,134,003	\$ 10,753
Update/Improve Infrastructure (IT - VRC/SAC)	\$ 252,530	\$ 252,530	\$ -	\$ -	\$ 252,530
Update/Improve Infrastructure (IT - New SEM)	\$ 645,883	\$ 645,883	\$ -	\$ 49,214	\$ 596,669
Update/Improve Infrastructure (Under Piazza & Stairwell Restoration)	\$ 3,300,000	\$ 3,300,000	\$ -	\$ 48,457	\$ 3,251,543
Update/Improve Infrastructure (Piazza Above SAC)	\$ 3,000,000	\$ 3,000,000	\$ -	\$ -	\$ 3,000,000
Library-Learning Resource Center Expansion	\$ 5,038,665	\$ 5,038,665	\$ -	\$ 38,665	\$ 5,000,000
Central Plant Upgrade	\$ 7,000,000	\$ 7,000,000	\$ -	\$ -	\$ 7,000,000
Mass Communications & Security Systems Upgrade	\$ 1,942,855	\$ 1,942,855	\$ -	\$ -	\$ 1,942,855
Mass Communications & Security Systems Upgrade (New SEM)	\$ 389,367	\$ 389,367	\$ -	\$ 294,202	\$ 95,165
Mass Communications & Security Systems Upgrade (VRC/SAC)	\$ 60,938	\$ 60,938	\$ -	\$ 56,704	\$ 4,234
Campus-Wide Security Systems Upgrade	\$ 2,058,670	\$ 2,058,670	\$ -	\$ 58,670	\$ 2,000,000
Pool Restoration and Upgrade	\$ 3,909,470	\$ 3,909,470	\$ -	\$ -	\$ 3,909,470
Tech I/Tech III CTE Complex	\$ 31,260,839	\$ 28,337,107	\$ (2,923,732)	\$ -	\$ 28,337,107
Planning (Non Project Specific)	\$ 520,000	\$ 530,000	\$ 10,000	\$ 178,219	\$ 351,781
Gym I/Gym II Restoration and Restrooms	\$ -	\$ -	\$ -	\$ -	\$ -
Under Piazza & Stairwell Restoration	\$ -	\$ -	\$ -	\$ -	\$ -
Gateway Phase 1	\$ -	\$ -	\$ -	\$ -	\$ -
Athletic Field Realignment/Entry Revisions/Parking Lot Improvements	\$ -	\$ -	\$ -	\$ -	\$ -
<b>COMPLETED PROJECTS</b>					
Swing Space - Gym II Renovation	\$ 153,397	\$ 153,397	\$ -	\$ 153,397	\$ -
Swing Space - Parking Lot 5 Expansion	\$ 1,965,399	\$ 1,965,399	\$ -	\$ 1,965,399	\$ -
Swing Space - Old SEM (Roofing)	\$ 47,747	\$ 47,747	\$ -	\$ 47,747	\$ -
Swing Space - Other	\$ 35,975	\$ 35,975	\$ -	\$ 35,975	\$ -
Update/Improve Infrastructure (Central Plant Enhancements)	\$ 61,862	\$ 58,768	\$ (3,094)	\$ 58,768	\$ -
Mass Communications & Security Systems Upgrade (Safety Film)	\$ 145,772	\$ 145,772	\$ -	\$ 145,772	\$ -
Mass Communications & Security Systems Upgrade (Door Replacement)	\$ 50,898	\$ 50,898	\$ -	\$ 50,898	\$ -
<b>SUB TOTAL</b>	<b>\$ 225,921,200</b>	<b>\$ 225,921,200</b>	<b>\$ -</b>	<b>\$ 111,107,937</b>	<b>\$ 114,813,263</b>

#### NOTES:

- 2021-048-CC - Project Encumbrance Transfer Request is required to increase Measure J funding on the Planning - (Non-Project Specific) project to create a revised established budget.
- 2021-049-CC - Project Encumbrance Transfer Request is required to increase Measure J Funding on the Swing Space - Fine Arts (Old SEM) project to create a revised established budget.



# ENCUMBRANCES OVER \$10,000

## CYPRESS CAMPUS - New Encumbrances (May. 2021 - Aug. 2021)

Project	Vendor	Purchase Order No.	Purchase Order Amount	Scope of Work
Campus-Wide Security System Upgrade	Guidepost Solutions, LLC	P0138714	\$58,670.00	Phase 1,2,3 : site assessment, design build, standards.
Fine Arts Building Renovation	Converse Consultants	P0145910	\$95,000.00	Phase 1,2,3: survey, contract documents, monitoring.
Fine Arts Building Renovation	Dovetail Decision Consultants Inc.	P0145327	\$210,060.00	Allowance, phase 1,2.
Fine Arts Building Renovation	Geotechnical Solutions Inc.	P0143939	\$14,000.00	Contingency-bond, Contingency-state
Fine Arts Building Renovation	Sundt Construction, Inc.	P0145275	\$394,561.00	Pre-construction phase 1
New SEM	Aqua Logic, Inc.	P0145250	\$18,818.18	Provide FF&E—Acrylic Tank, and tax
New SEM	Sundt Construction, Inc.	P0131052-49553	\$804,124.00	Change order #4
VRC/SAC	GST	P0142639	\$38,963.09	Purchase FF&E
VRC/SAC	GST	P0142660	\$134,559.82	Provide FF&E
VRC/SAC	GST	P0142866	\$11,812.76	Provide FF&E
VRC/SAC	Sidepath, Inc.	P0142865	\$48,496.00	Purchase FF&E
VRC/SAC	Sundt Construction, Inc.	P0131052-41159	\$15,343.00	Change order #4—adjustment
Swing Space—Fine Arts (Old SEM)	DLR Group	P0145329	\$423,156.00	Allowance
Swing Space—Fine Arts (Old SEM)	Dovetail Decision Consultants, Inc.	P0145326	\$95,330.00	Allowance—phase 1, 2
New SEM / VRC/SAC	Sundt Construction, Inc.	P0131052-49559	\$366,720.94	Change order #4, GC-transfer, over budget.



# ESTIMATED PROJECT BUDGETS

## FULLERTON CAMPUS

### CURRENT PROJECTS

### PROJECT BUDGET/VARIANCE REPORT—FULLERTON

CURRENT PROJECTS	Measure J Budget MAY FY 2020-21	Measure J Budget JUL FY 2021-22	Variance	Measure J Expenses	Balance
Greenhouse Replacement	\$ 834,381	\$ 834,381	\$ -	\$ 640,495	\$ 193,886
New Instructional Building	\$ 53,588,031	\$ 53,588,031	\$ -	\$ 43,971,866	\$ 9,616,165
Central Plant Replacement & Expansion	\$ 10,600,000	\$ 10,600,000	\$ -	\$ 8,643,861	\$ 1,956,139
Renovate Buildings 300 & 500	\$ 20,482,000	\$ 20,482,000	\$ -	\$ 1,020,429	\$ 19,461,571
New M & O Building	\$ 6,758,944	\$ 6,758,944	\$ -	\$ 30,550	\$ 6,728,394
Chapman / Newell Instructional Building	\$ 21,985,777	\$ 21,985,777	\$ -	\$ 33,180	\$ 21,952,597
New Performing Arts Complex—Demolish Buildings 1100 and 1300	\$ 30,724,153	\$ 30,724,153	\$ -	\$ 179,364	\$ 30,544,789
New Welcome Center & Lot C West	\$ 37,353,872	\$ 37,353,872	\$ -	\$ -	\$ 37,353,872
New Horticulture/Lab School/STEM Lab	\$ 33,813,764	\$ 33,813,764	\$ -	\$ -	\$ 33,813,764
Renovate Building 840 Campus Services	\$ 7,878,400	\$ 7,878,400	\$ -	\$ -	\$ 7,878,400
Demolish Building 2000	\$ 1,108,000	\$ 1,108,000	\$ -	\$ -	\$ 1,108,000
New Parking Structure	\$ 11,219,260	\$ 11,219,260	\$ -	\$ -	\$ 11,219,260
Update/Improve Infrastructure	\$ 23,162,352	\$ 23,162,352	\$ -	\$ -	\$ 23,162,352
Update/Improve Infrastructure (IT)	\$ 7,721,018	\$ 7,721,018	\$ -	\$ 2,169,223	\$ 5,551,795
Update/Improve Infrastructure (IT - Instructional Bldg.)	\$ 278,982	\$ 278,982	\$ -	\$ -	\$ 278,982
New Thermal Energy Storage (TES)	\$ 10,139,524	\$ 10,139,524	\$ -	\$ -	\$ 10,139,524
Renovate Building 600	\$ 3,117,641	\$ 3,117,641	\$ -	\$ -	\$ 3,117,641
Renovate Health Center	\$ 1,328,800	\$ 1,328,800	\$ -	\$ -	\$ 1,328,800
Renovate Faculty Lounge & Offices	\$ 6,212,250	\$ 6,212,250	\$ -	\$ -	\$ 6,212,250
Renovate Wellness Center	\$ 2,534,400	\$ 2,534,400	\$ -	\$ -	\$ 2,534,400
Landscape & Hardscape Improvements	\$ 3,840,000	\$ 3,840,000	\$ -	\$ -	\$ 3,840,000
Renovate Building 3100	\$ 2,402,940	\$ 2,402,940	\$ -	\$ -	\$ 2,402,940
Demolish Building 1901-04, 1956-60, 3000	\$ 1,333,000	\$ 1,333,000	\$ -	\$ -	\$ 1,333,000
Parking Lot Improvements at Building 3000	\$ 1,999,500	\$ 1,999,500	\$ -	\$ -	\$ 1,999,500
Renovate Building 2100	\$ 8,277,500	\$ 8,277,500	\$ -	\$ -	\$ 8,277,500
Demolish Buildings 2200 & 3104	\$ 1,392,209	\$ 1,392,209	\$ -	\$ -	\$ 1,392,209
Planning (Non Project Specific)	\$ 595,000	\$ 595,000	\$ -	\$ 240,896	\$ 354,104
<b>COMPLETED PROJECTS</b>					
Update/Improve Infrastructure (Bldg 300-500 Sewer Line)	\$ 444,702	\$ 444,702	\$ -	\$ 444,702	\$ -
<b>SUB TOTAL</b>	<b>\$ 311,126,400</b>	<b>\$ 311,126,400</b>	<b>\$ -</b>	<b>\$ 57,374,566</b>	<b>\$ 253,751,834</b>

NOTES:





# ENCUMBRANCES OVER \$10,000

## FULLERTON CAMPUS - New Encumbrances (May. 2021 - Aug. 2021)

Project	Vendor	Purchase Order No.	Purchase Order Amount	Scope of Work
Central Plant Replacement & Expansion	Orange County Air Conditioning	P0144975	\$12,500.00	Provide professional services- Review of HVAC system
New Instructional Building	CSI Fullmer	P0145901	\$345,761.70	Assembly, design, furniture
New Instructional Building	Haworth Inc. c/o Unisource Solutions	P0145913	\$58,969.57	Purchase FF&E
New Instructional Building	Krueger International, Inc.	P0145902	\$1,101,765.92	PW Upcharge, Purchase FF&E- IB
New Instructional Building	Orange Country Air Conditioning	P0144975	\$12,500.00	Provide professional services- Review of HVAC system
New Performing Arts Complex	Dovetail Decision Consultants, Inc.	P0144010	\$91,900.00	Fixture, Furniture & Equipment coordination consulting services
Planning—FC (Non-Project Specific)	EXP U.S. Services, Inc.	P0144666	\$11,000.00	Provide Professional Services—Campus wide Notifier Infrastructure Feasibility Study Reimbursables



# ESTIMATED PROJECT BUDGETS

## ANAHEIM CAMPUS

### CURRENT PROJECTS

### PROJECT BUDGET/VARIANCE REPORT—ANAHEIM

CURRENT PROJECTS	Measure J Budget MAY FY 2020-21	Measure J Budget JUL FY 2021-22	Variance	Measure J Expenses	Balance
Update/Improve Infrastructure	\$ 661,133	\$ 661,133	\$ -	\$ -	\$ 661,133
Update/Improve Infrastructure (IT)	\$ 1,000,000	\$ 1,000,000	\$ -	\$ 701,414	\$ 298,586
Update/Improve Infrastructure (Secondary MDF)	\$ 105,407	\$ 105,407	\$ -	\$ 92,254	\$ 13,153
Develop Interior and Exterior Signage	\$ 313,800	\$ 313,800	\$ -	\$ -	\$ 313,800
Second Floor Tenant Improvements	\$ 813,000	\$ 813,000	\$ -	\$ -	\$ 813,000
Swing Space Projects/ Interim Housing	\$ 2,000,000	\$ 2,000,000	\$ -	\$ -	\$ 2,000,000
Anaheim Campus Tower First Floor Life/Safety Renovation	\$ 2,183,000	\$ 2,183,000	\$ -	\$ 42,503	\$ 2,140,497
Upper Deck Enhancements	\$ 309,901	\$ 309,901	\$ -	\$ -	\$ 309,901
1st. Floor Remodel Student Center and Classrooms	\$ 2,352,720	\$ 2,352,720	\$ -	\$ -	\$ 2,352,720
Pedestrian and Vehicular Traffic Flow	\$ 2,329,000	\$ 2,329,000	\$ -	\$ -	\$ 2,329,000
4th Floor Improvements	\$ 218,000	\$ 218,000	\$ -	\$ -	\$ 218,000
Outdoor Patio Remodel	\$ 1,382,500	\$ 1,382,500	\$ -	\$ -	\$ 1,382,500
Develop Drop-Off Plaza at Romney Drive	\$ 569,000	\$ 569,000	\$ -	\$ -	\$ 569,000
Develop Intersection at Romney & Coronet	\$ 773,631	\$ 773,631	\$ -	\$ -	\$ 773,631
Holding Account	\$ 6,600,000	\$ 6,600,000	\$ -	\$ -	\$ 6,600,000
Planning (Non Project Specific)	\$ 440,000	\$ 440,000	\$ -	\$ 9,475	\$ 430,525
<b>COMPLETED PROJECTS</b>					
7th and 10th Floors Buildout	\$ 915,972	\$ 915,972	\$ -	\$ 915,972	\$ -
5th Floor CTE & 2nd Floor Room 215	\$ 640,736	\$ 640,736	\$ -	\$ 640,736	\$ -
<b>SUB TOTAL</b>	<b>\$ 23,607,800</b>	<b>\$ 23,607,800</b>	<b>\$ -</b>	<b>\$ 2,402,354</b>	<b>\$ 21,205,446</b>

NOTES:



# ENCUMBRANCES OVER \$10,000

## ANAHEIM CAMPUS - New Encumbrances (May. 2021 - Aug. 2021)

Project	Vendor	Purchase Order No.	Purchase Order Amount	Scope of Work
Develop Interior and Exterior Signage	Westberg-White Inc.	P0143701	\$49,400	Develop wayfinding standards



# ESTIMATED PROJECT BUDGETS

## DISTRICT

### PROJECT BUDGET/VARIANCE REPORT—DISTRICT

DISTRICT WIDE EXPENSE	Measure J Budget MAY FY 2020-2021	Measure J Budget JUL FY 2021-22	Variance	Measure J Expenses	Balance
Program Management Fees	\$ 20,000,000	\$ 20,000,000	\$ -	\$ 5,656,681	\$ 14,343,319
Bond Issuance Cost	\$ 3,544,600	\$ 3,544,600	\$ -	\$ 1,301,760	\$ 2,242,840
Other	\$ 800,000	\$ 800,000	\$ -	\$ 368,416	\$ 431,584
<b>SUB TOTAL</b>	<b>\$ 24,344,600</b>	<b>\$ 24,344,600</b>	<b>\$ -</b>	<b>\$ 7,326,857</b>	<b>\$ 17,017,743</b>





# ENCUMBRANCES OVER \$10,000

## DISTRICT - New Encumbrances (May. 2021 - Aug. 2021)

No Purchase Orders over \$10,000 have been issued for the District as of May 31, 2021





# ACTIVE PROJECTS

## 90 - DAY LOOK AHEAD (Continued)



NORTH ORANGE COUNTY COMMUNITY COLLEGE DISTRICT

CYPRESS - FULLERTON - ANAHEIM (NOCE)

90-DAY LOOK AHEAD SCHEDULE

(08-01-21 TO 10-31-21)



	August					September					October					Comments
	3	10	17	24	31	7	14	21	28		5	12	19	26		
<b>CLOSE-OUT PHASE</b>																
<b>ANAHEIM (NOCE)</b>																
2nd Main Distribution Frame (MDF) Room for Campus																In Progress
<b>CYPRESS</b>																
Athletic Field Realignment - Baseball Clubhouse																In Progress
New SEM																In Progress
VRC/SAC																In Progress
Veterans' Memorial Bridge and Tribute Garden and Pond Refurb.																In Progress
Pond Refurbishment																In Progress
<b>FULLERTON</b>																
Central Plant Expansion																In Progress
Horticulture Lab - Greenhouse Replacement																In Progress

\* Non-Measure J expenditure activities



**September 2021**

# Citizens' Oversight Committee

COC

## Measure J Bond Program



1830 W. Romneya Dr., Building B., Anaheim, CA 92801