

March 2022



CAPITAL PROJECTS REPORT to the

Citizens' Oversight Committee

MAAS

Intentionally Left Blank

TABLE OF CONTENTS

Active Project Status Report

Cypress Campus

Campus Aerial View	2
Fine Arts Building Renovation	3
Swing Space—Fine Arts (OLD SEM).....	4
Central Plant Upgrades	5
Campus-Wide Security Systems Upgrade	6
Update/Improve Infrastructure	7
Mass Communications & Security Systems Upgrade	8
Updates on Campus Projects - Cypress College.....	9-11

Fullerton Campus

Campus Aerial View	12
New Instructional Building	13
Renovate Buildings 300.....	14
New Maintenance & Operation Building	15
Chapman / Newell Instructional Building	16
New Performing Arts Complex - Demolish Buildings 1100 and 1300.....	17
Update / Improve Infrastructure	18
Updates on Campus Projects - Fullerton College.....	19-23

NOCE - Anaheim Campus

Campus Aerial View	24
Swing Space Project / Interim Housing.....	25
Develop Interior And Exterior Signage.....	26
Anaheim Campus Tower First Floor Life/Safety Renovation	27
Update / Improve Infrastructure	28
Updates on Campus Projects - Anaheim Campus.....	29-31

Completed Projects

Cypress Campus	33-36
Fullerton Campus	37-38
NOCE - Anaheim Campus & District Offices	39-40

Financial Review

<i>Capital Project Updates - Measure J</i>	42
Estimated Project Budgets & Purchase Orders Over \$10,000	43-50
Cypress Campus	44
Fullerton Campus.....	46
NOCE - Anaheim Campus.....	48
District.....	50
90-Day Look Ahead Schedule.....	51-52

Active Project Status Report

Campus Projects

- Cypress
- Fullerton
- Anaheim and District Offices



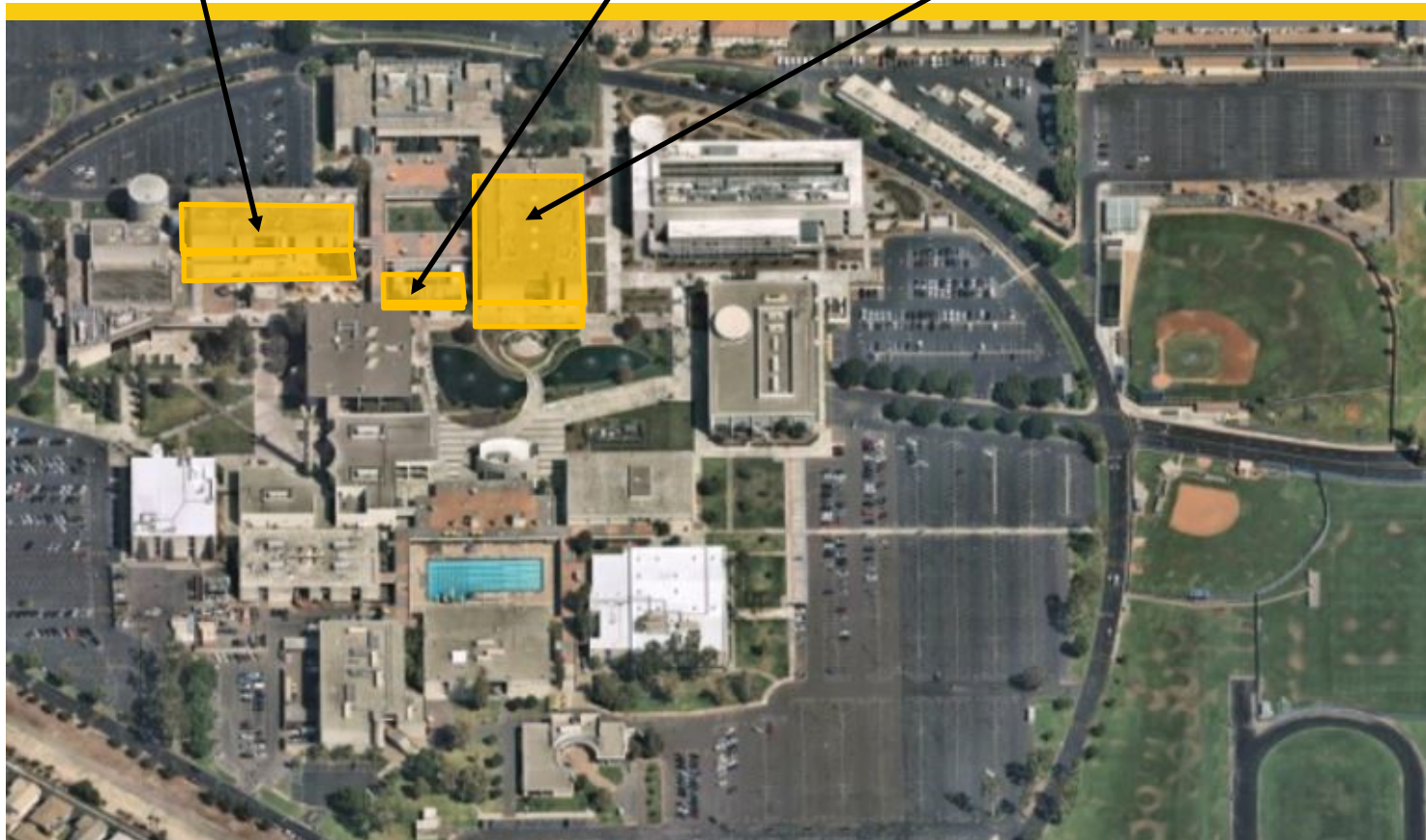
AERIAL VIEW — CYPRESS CAMPUS PROJECTS



Fine Arts Building Renovation
[Design - DSA Review]

Central Plant Upgrades
[Planning]

Swing Space Fine Arts (Old SEM)
[Design - DSA Review]



- ▶ IT Network Refresh (Throughout Campus)
[Implementation]
- ▶ Campus-Wide Security Systems Upgrade
[Planning]



PROJECT STATUS REPORT — CYPRESS CAMPUS

FINE ARTS BUILDING RENOVATION

DESIGN - DSA REVIEW

Address	9200 Valley View St. Cypress, CA 90630
Project Manager	Allison Coburn Cypress College
Architect	DLR Group
Construction	Sundt Construction, Inc.
Project Square	66,765 GSF
DSA Application A#	04-120539



Project Overview

The project involves the renovation of the existing 36,804 ASF in the Fine Arts Building #2. Currently, related instructional programs are dispersed throughout the Campus. Renovations will encompass functional and adequate recording arts, rehearsal and performance spaces for music instruction, spaces for student study near departmental faculty and other resources, and the reuse of existing vacant spaces currently not configured for instruction. Noise intrusion between spaces will be mitigated to minimize disruptions to instruction and music practice, and new instructional technology will be installed to support current instructional methodologies and pedagogies. The scope also replaces the existing mechanical, electrical, and plumbing systems and allocates sufficient square footages for code compliant bathrooms. Allocation of funds by the Department of Finance was obtained to address seismic upgrades to comply with DSA requirements.

- Preliminary Total Project Budget..... \$51,546,861
- Funding Source Measure J & State Capital Outlay
 - Measure J \$33,413,861
 - State Capital Outlay Funds \$18,133,000
- Estimated Construction Start..... Fall 2022
- Targeted Completion Winter 2024



PROJECT STATUS REPORT — CYPRESS CAMPUS

SWING SPACE - FINE ARTS (OLD SEM)

DESIGN— DSA REVIEW

Address 9200 Valley View St.
Cypress, CA 90630

Project Manager Allison Coburn
Cypress College

Architect DLR Group

Project Delivery Design-Bid-Build

Project Square 100,681 GSF

DSA Application A# 04-120540



Project Overview

The existing 1972, 3-story, 100,681 square foot Science Engineering and Math (SEM) building will be utilized to temporarily house the Fine Arts programs while the Fine Arts Building undergoes renovation. To accommodate the fine arts programs, minor renovations will be required including, but not limited to, demolition of casework, sinks, plumbing, flooring, and accessibility restroom upgrades. Only a portion of the gross square footage (GSF) is undergoing renovation.

- Project Budget..... \$5,626,285
- Funding Source Measure J
- Estimated Construction Start..... Spring 2022
- Targeted Completion Fall 2022



PROJECT STATUS REPORT — CYPRESS CAMPUS

CENTRAL PLANT UPGRADES PLANNING

Address 9200 Valley View St.
Cypress, CA 90630

Project Manager Allison Coburn
Cypress College

Architect TBD

Project Delivery Method TBD



Project Overview

Upgrades to current equipment to provide heating, cooling, and redundancy of existing equipment for maintaining a comfortable environment at the Campus' building for the students, faculty, and staff.

- Project Budget..... \$7,000,000
- Funding Source Measure J
- Project Delivery Method To Be Determined
- Architect/Engineer of Record To Be Determined
- Estimated Construction Start..... To Be Determined
- Targeted Completion To Be Determined



PROJECT STATUS REPORT — CYPRESS CAMPUS

CAMPUS-WIDE SECURITY SYSTEMS UPGRADE PLANNING

Address 9200 Valley View St.
Cypress, CA 90630

Project Manager Allison Coburn
Cypress College

Architect TBD

Project Delivery Method TBD



Project Overview

Assessment of the Campus security system and development of security system standards. Considerations for design solutions are underway. Construction and implementation are initially estimated at \$1.7M.

- Project Budget..... \$2,058,670
- Funding Source Measure J
- Project Delivery Method To Be Determined
- Architect/Engineer of Record To Be Determined
- Estimated Construction Start..... To Be Determined
- Targeted Completion To Be Determined



PROJECT STATUS REPORT — CYPRESS CAMPUS

UPDATE/IMPROVE INFRASTRUCTURE

VARIOUS STAGES

Address	9200 Valley View St. Cypress, CA 90630	Total Project Budget	\$24,653,641 (Measure J)
		Total Budget Allocated	\$16,559,235 (Measure J)
Number of Projects	8	Funding Source	Measure J & Capital Outlay

General Overview

Projects to address infrastructure improvements or upgrades throughout the Campus. Funds are allocated to projects as needs are identified.

IT Network Refresh Project Overview

IMPLEMENTATION

Assessment of Campus data network infrastructure to identify necessary upgrades and changes that will enable supporting future Campus needs; specifically addressing wired, wireless, voice, and video networks. The scope includes replacing network core switches, providing a more responsive support structure, preparing for cloud computing, and adaptation of voice over IP systems across the District. For costs related to the New SEM and VRC/SAC, please refer to pages 3 and 4 of this report.

- Project Budget..... \$9,358,073
 - Current Implementation (Measure J) \$1,972,462
 - Current Implementation (Capital Outlay) \$4,256,486
 - Upcoming Phases (Measure J) \$3,129,125
- Funding Source Measure J & Capital Outlay Funds
- Project Delivery Method California Multiple Award Schedule (CMAS)
- Design Implementation..... VectorUSA
- Architect..... Shandam Consulting
- Project Management District IS / PlanNet Consulting
- Design Implementation Start..... November 2019
- Targeted Completion July 2022



PROJECT STATUS REPORT — CYPRESS CAMPUS

MASS COMMUNICATION & SECURITY SYSTEMS UPGRADE

VARIOUS STAGES

Address	9200 Valley View St. Cypress, CA 90630	Total Project Budget	\$2,589,830
		Total Budget Allocated	\$646,975
Number of Projects	4	Funding Source	Measure J

General Overview

Projects to address fire alarm, mass communication, security, access control, and lockdown systems throughout the Campus. Funds are allocated to projects as needs are identified. Two projects have been completed to date related to door replacements and safety film installation. Please refer to pages 52 for additional details on completed projects. For mass communication & security systems projects related to the New SEM and VRC/SAC, please refer to pages 3 and 4 of this report.



PROJECT STATUS REPORT — CYPRESS CAMPUS

UPDATES ON CAMPUS PROJECTS - CYPRESS COLLEGE

New Science, Engineering, and Mathematics Building

- An agreement was reached with Sundt Construction, Inc. for the partial release of the five percent retention held during construction. Of the amount available in a joint escrow account, \$375,301 was withheld for the pending completion of punch-list scope of work. Upon correction of the issues noted on the listing, the payments that have been withheld will be released. Correction of these issues occurred by January 31, 2022.

New Veterans' Resource Center & Students Activities Center Expansion

- An agreement was reached with Sundt Construction, Inc. for the partial release of the five percent retention held during construction. Of the amount available in a joint escrow account, \$26,500 was withheld for the pending completion of punch-list scope of work. Upon correction of the issues noted on the listing, the payments that have been withheld will be released. Correction of these issues occurred by January 31, 2022.

Central Plant Upgrades

- A report by P2S Engineering evaluating all capacities and conditions of the existing central plant was completed by the end of 2021. The report informed the necessary scope of work for the upcoming project.

Fine Arts Building Renovation



Fine Arts Renovation—Foyer Rendering by DLR Group

- The submittal of 100 percent of Construction Documents to the Division of the State Architect (DSA) took place on November 22. Surveying for chilled water (CHW) lines identified the actual location of said utilities outside of the immediate area of concern that might be impacted by foundation seismic enhancement work. Surveys continue identifying pathways to execute the seismic reinforcement scope of work with minimal disruption to existing utilities and avoiding unforeseen conditions during construction.
- As of late January, the construction documents were under review by the DSA. The Campus Project Team explored pathways to



PROJECT STATUS REPORT — CYPRESS CAMPUS

UPDATES ON CAMPUS PROJECTS - CYPRESS COLLEGE (Continued)

allow for work to be completed around the existing utilities. For most of the systems, the Design Team reviewed whether there would be enough information for a detailed plan and advised whether there was a need for additional potholing at congested locations.

Swing Space Fine Arts (Old SEM)

- The Project Design Team received review comments from DSA based on the submitted 100 percent Construction Documents in January. DLR Group, the Architect of Record for the project, continued to work through each of the comments to determine which items required additional conversations with the State Agency, and which ones should be upgraded as requested. The Campus Project Team expects an approval date by the end of February.
- The Campus Project Team revised cost estimates in preparation for the upcoming bidding phase, which is anticipated to take place in February 2022 following approval from the State agency on the construction documents.



Fine Arts Renovation - Recital Hall Rendering by DLR Group

Update / Improve Infrastructure IT Network Refresh Project

- Shortages on available supplies expanded to components at in-wall boxes and cabling. VectorUSA experienced additional impacts for the delivery of cabling due to shortages in the global supplies of copper. Shortages and delays in deliveries of CAT6 cabling have caused minor delays in the completion of the bond-funded scope of work. Mitigation measures were taken as well as adjustments to the installation schedule which will be conducted based on the availability of materials.
- On the capital-funded scope of work, delays were more significant due to supply chain disruptions. The Voice-over-Internet Protocol (VoIP) migration, planning, and configuration, the installation of access points, the installation of switches, the installations at secondary MDFs, and cutover plans have been impacted and delayed. In recent conversations, suppliers have been

PROJECT STATUS REPORT — CYPRESS CAMPUS

UPDATES ON CAMPUS PROJECTS - CYPRESS COLLEGE (Continued)

unable to provide status updates on the availability of components. The District Project Team and VectorUSA will continue working with the manufacturers to explore possibilities in expediting deliveries. Meanwhile, an assessment of what activities can be accomplished or can be postponed once components are available for installation is underway. There is an impact on the overall project completion to the end of the year depending on the evolution of supply conditions.

- Access Points specifically intended for installation at Cypress College, have been added to the existing list of back ordered items. VectorUSA is working with the vendor on updates for the tentative delivery dates for the equipment. In the meanwhile, the pre-configuration and installation of available components is progressing throughout the Campus. As back-ordered equipment is available and delivered to the site, items will be configured and incorporated into the network.
- The secondary Uninterruptible Power Supplies (UPS) for the Campus were delivered and installed at the designated locations. Deliveries for components for the secondary MDF at Cypress College were anticipated to start in early January 2022.

Campus-Wide Security Systems Upgrade

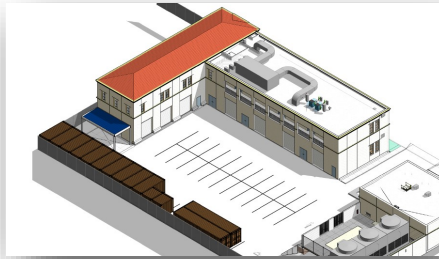
- The Campus has deployed a test pilot program for the upcoming upgrades of the security cameras monitoring station. As results are gathered on functionality, phase I will implement improvements to the monitoring station. An upcoming phase II will include the replacement of existing cameras. The Campus Project Team is developing a deployment schedule for the entire project.



AERIAL VIEW — FULLERTON CAMPUS PROJECTS

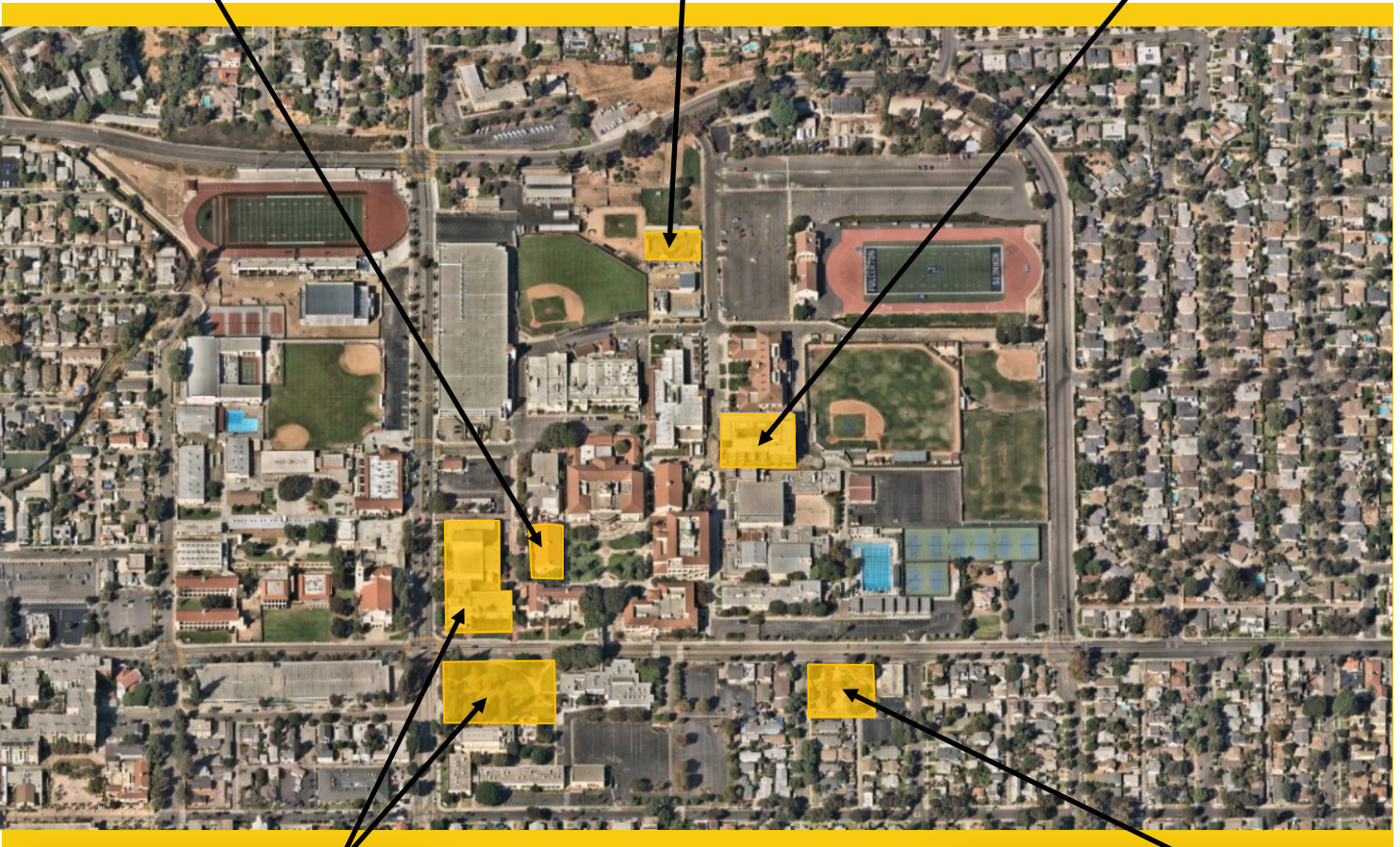


Renovate Building 300
[Planning]



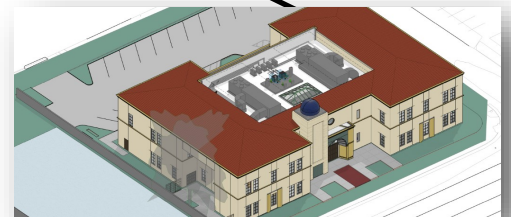
New Maintenance & Operations Building
[Design - Design Development]

New Instructional Building
[Close-Out]



New Performing Arts Complex - Demolish
Buildings 1100 and 1300
[Design - Construction Documents]

► IT Network Refresh
(Throughout Campus)
[Implementation]



Chapman / Newell Instructional Building
[Design - Design Development]



PROJECT STATUS REPORT — FULLERTON CAMPUS

NEW INSTRUCTIONAL BUILDING CLOSE-OUT

Address	321 E. Chapman Ave. Fullerton, CA 92832
Project Manager	Oscar Saghie Fullerton College
Design-BUILDER	BN Builders, Inc. & Roesling Nakamura Terada Architects, Inc.
Project Delivery Method	Progressive Design-Build
Project Gross Square Footage	74,927 GSF
DSA Application A#	04-118108



Project Overview

The New Instructional Building (New IB) will help meet Campus growth needs with the goal of consolidating an instructional division into a single building. The building will accommodate more than 40 classrooms and the division office services including staff offices. Scope of work for this project includes the expansion of the Central Plant.

Budget & Construction Costs

- Funding Source Measure J & Federal
- Total Project Budget (Est.) \$54,067,013
 - New Instructional Building \$53,588,031
 - Network Refresh \$278,982
 - HEERF \$200,000
- Funding Sources Measure J & Federal
 - Measure J \$53,867,013
 - Federal Funds (HEERF) \$200,000
- Construction Cost \$35,985,926
- Construction Percent Completion 93.5%

Schedule

- Design Start Jun. 18, 2018
- Construction Start Feb. 12, 2020
- Contracted Substantial Completion Aug. 2021
- Targeted Substantial Completion Nov. 2021
- Targeted Occupancy Mar. 2022

Allowances and Contingencies Status

	In Contract	Approved	%	Balance	%
Construction Contingency	\$1,082,149	\$1,060,712	98.0	\$21,437	2.0
Allowance	\$1,782,043	\$849,247	47.7	\$932,796	52.3



PROJECT STATUS REPORT — FULLERTON CAMPUS

RENOVATE BUILDING 300 PLANNING

Address	321 E. Chapman Ave. Fullerton, CA 92832
Project Manager	Oscar Saghieh Fullerton College
Architect	R2A Architecture
General Contractor	TBD
Project Delivery Method	Design-Bid-Build
DSA Application A#	04-118314



Project Overview

Total renovation of Building 300, including seismic enhancements and historic consideration of Building 300. The renovated building will contain general classrooms, dean and faculty offices, and shared laboratories.

- Total Project Budget*\$31,001,221
- Funding SourceMeasure J & State Capital Outlay
 - Measure J*\$15,536,546
 - State Capital Outlay Funds*\$15,464,675
- Project Gross Square Footage.....55,451 GSF
- Estimated Construction Start.....Summer 2024
- Targeted CompletionFall 2025

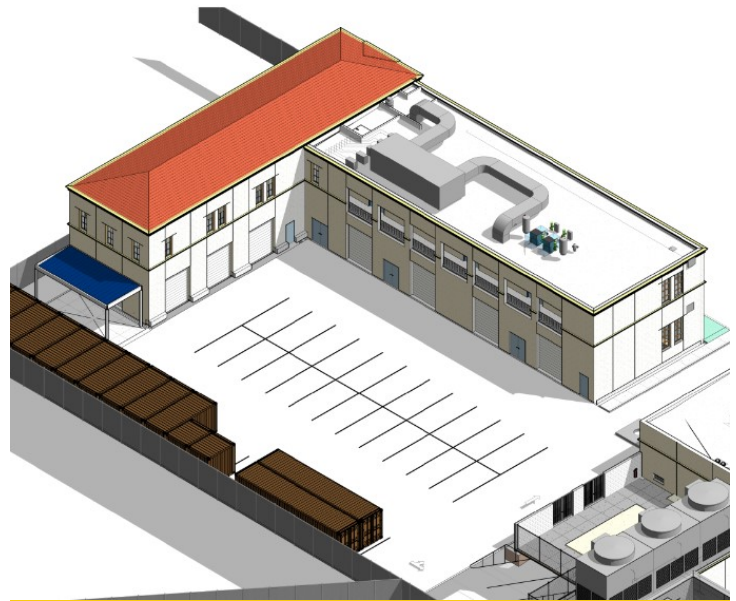
*Denotes new allocations per the newly approved Final Project Proposal (FPP) approved by the Board of Trustees on February 22nd, 2022. Amounts differ from the Financial Reports produced on January 31st, 2022.



PROJECT STATUS REPORT — FULLERTON CAMPUS

NEW MAINTENANCE & OPERATION BUILDING DESIGN - DESIGN DEVELOPMENT

Address	321 E. Chapman Ave. Fullerton, CA 92832
Project Manager	Oscar Saghie Fullerton College
Design-BUILDER	BN Builders, Inc. & Roesling Nakamura Terada Architects, Inc.
Project Delivery Method	Progressive Design-Build
Project Gross	17,846 GSF
DSA Application A#	TBD



Project Overview

The New Maintenance and Operations (M&O) Building will centralize all services into a single building located on the Main Campus. The building will include trade-specific workshops for maintenance, grounds, facilities, and custodial personnel while improving response time and efficiencies by locating the building on the Main Campus adjacent to the central plant.

- Total Project Budget\$14,758,944
- Funding SourceMeasure J & Local Funds
 - Measure J\$6,758,944
 - Local Funds.....\$8,000,000
- Estimated Construction Start.....Summer 2023
- Targeted CompletionFall 2024

PROJECT STATUS REPORT — FULLERTON CAMPUS

CHAPMAN / NEWELL INSTRUCTIONAL BUILDING DESIGN - DESIGN DEVELOPMENT

Address	321 E. Chapman Ave. Fullerton, CA 92832
Project Manager	Oscar Saghie Fullerton College
Design-BUILDER	BN Builders, Inc. & Roesling Nakamura Terada Architects, Inc.
Project Delivery Method	Progressive Design-Build
Project Gross	17,846 GSF
DSA Application A#	TBD



Project Overview

The building at the intersections of Chapman Avenue and Newell Street will house the Campus Veterans' Resource Center, Student Wellness Center (both medical and behavioral health), the Campus Food Bank, Umoja Community Program, Extended Opportunity Programs and Services (EOPS), CalWORKS, Cooperative Agencies Resources for Education (CARE)/Foster Youth Success Initiative (FYSI), a Multi-Cultural Center, and 2 instructional classrooms. In addition, there will be support functions including shared community storage, a department-wide copy and breakroom as well as a lactation room.

- Total Project Budget\$21,985,777
- Funding SourceMeasure J & Local Funds
 - Measure J\$21,985,777
- Estimated Construction Start.....Summer 2023
- Targeted CompletionFall 2024



PROJECT STATUS REPORT — FULLERTON CAMPUS

NEW PERFORMING ARTS COMPLEX - DEMOLISH BUILDINGS 1100 AND 1300

DESIGN - Construction Documents

Address	321 E. Chapman Ave. Fullerton, CA 92832
Project Manager	Oscar Saghieh Fullerton College
Architect	Pfeiffer Partners Architects, Inc.
Project Delivery Method	Design-Bid-Build



Project Overview

This project addresses the demand for enrollments in the performing arts programs by constructing a new complex bringing music, drama, theater arts, and communication programs together into a single facility. The new building replaces outdated facilities with electrical deficiencies and outmoded configurations. The new structure will take advantage of the potential use of commonly required spaces to improve overall utilization and flexible spaces that help programs in meeting higher demands anticipated in the near future. As this project is integral to the Campus master plan and changes in scope can jeopardize the availability of matching State funds for the project, assessments are underway for the increase of Measure J funding. Transfers of funds will be completed from lower-priority projects at the Campus.

- Preliminary Total Project Budget \$72,273,153
- Expected Total Project Budget Increase to \$119,336,120
- Funding Source Measure J & State Capital Outlay
 - Measure J \$30,724,153
 - State Capital Outlay Funds \$41,549,000
- Project Gross Square Footage 66,765 GSF
- Estimated Construction Start Summer 2023
- Targeted Completion..... Summer 2025



PROJECT STATUS REPORT — FULLERTON CAMPUS

UPDATE/IMPROVE INFRASTRUCTURE

VARIOUS STAGES

Address	321 E. Chapman Ave. Fullerton, CA 92832	Total Project Budget	\$31,607,054 (Measure J)
		Total Budget Allocated	\$8,444,702 (Measure J)
Number of Projects	3	Funding Source	Measure J & Capital Outlay

General Overview

Projects to address infrastructure improvements or upgrades throughout the Campus. Funds are allocated to projects as needs are identified.

IT Network Refresh Project Overview

IMPLEMENTATION

Assessment of Campus data network infrastructure to identify necessary upgrades, and changes that will enable supporting future Campus needs; specifically addressing wired, wireless, voice, and video networks. The scope includes replacing network core switches, providing a more responsive support structure, preparing for cloud computing, and adaptation of voice over IP systems across the District. For costs related to the New Instructional Building please refer to page 19 of this report.

- Project Budget..... \$13,021,817
 - Current Implementation (Measure J) \$3,132,039
 - Current Implementation (Capital Outlay) \$5,300,799
 - Upcoming Phases (Measure J) \$4,588,979
- Funding Source Measure J & Capital Outlay Funds
- Project Delivery Method California Multiple Award Schedule (CMAS)
- Design Implementation..... VectorUSA
- Architect..... Shandam Consulting
- Project Management District IS / PlanNet Consulting
- Design Implementation Start..... November 2019
- Targeted Completion July 2022



PROJECT STATUS REPORT — FULLERTON CAMPUS

UPDATES ON CAMPUS PROJECTS - FULLERTON COLLEGE

New Instructional Building



New Instructional Building —December 2021

- The general contractor continued addressing all remaining punch-list items throughout the building. Adjustments to all exterior doors for the proper operation were completed in early November. Rework to the ramp at the base of stairwell No. 3 for ADA slope compliance was completed in mid-November. It was re-inspected for adherence to code standards late in the month. The exterior light fixture installation was completed in late November.

- All remaining punch-list items were being addressed as supplies became available due to shortages in material availability as a result

of supply chain disruptions.

- A final commissioning inspection for lighting controls was completed in early December.
- The Campus Project Team worked on a response to the Construction Change Directive to DSA related to the seismic fastening of furniture at offices throughout the building. Revised drawings for the proposed devices were drafted and submitted to the State agency for review in the third week of December.
- The building began hosting classes starting on January 21st for the Spring 2022 semester.
- By late January, a few punch-list items remained unresolved. This included ADA-compliant window openers, which has a lead time of eight to 10 weeks.
- Tiling for the space below one of the three building stairwells also remained. Due to international supply chain disruptions, tiling is not expected until March. The Campus Project Team expects a completion date of March 22, 2022.



PROJECT STATUS REPORT — FULLERTON CAMPUS

UPDATES ON CAMPUS PROJECTS - FULLERTON COLLEGE (Continued)



New Instructional Building — December 2021

Central Plant Replacement & Expansion

- DSA issued the certification of compliance letter on December 27, 2021 marking the completion of the project following the approved construction documents. The financial close-out of the project will continue for the upcoming months.

Renovate Building 300

- Meetings anticipated for late November with the California Community Colleges Chancellor's Office (CCCCO) took

place in the second week of December. In this session, the District had the opportunity to discuss funding for the project's revised scope of work concerning Building 300. The District and the Project Design Team prepared written documentation that was presented to the State's Department of Finance, validating the need to postpone Building 500 and continue with the remodeling of Building 300 with seismic enhancements due to its historic nature.

- The District is anticipated to receive a decision from the State in March 2022 on the availability of funding for the upcoming phases and in preparation for plan review by DSA and bidding of the finalized scope of work.
- The Project Design and Campus Teams discussed the potential resubmittal of the revised construction drawings to DSA under a new application number. The new submittal would be inclusive of seismic enhancement scope of work and the postponement of Building 500 from the Project.
- The Campus Project Team continued to work with Cambridge West in the development of a revised Final Project Proposal (FPP) application for review and consideration for funding by the California Community Colleges Chancellor's Office (CCCCO). The new application would include the scope of work for Building 300 alone inclusive of seismic enhancements and remediations. A final draft of the FPP will be reviewed by the College and District leadership in mid-February prior to submittal to the CCCCCO later that month.



PROJECT STATUS REPORT — FULLERTON CAMPUS

UPDATES ON CAMPUS PROJECTS - FULLERTON COLLEGE (Continued)

- The Design Team received feedback from DSA on structural components for the seismic enhancements scope of work. The details, potentially available in the first weeks of February, will inform and update the extent of the renovation project.

New Maintenance & Operations Building Chapman / Newell Instructional Building

- The final programming validation meetings took place in mid-November to confirm developments of adjacencies and space requirements as discussed at the onset of design in anticipation of the progression into schematic design. Facilities and Campus leadership fine-tuned details in the later portion of November on requirements for the spaces within the building and the reuse, placement, as well as the arrangement of existing storage facilities such as shipping containers.
- There was a preliminary meeting with DSA in December to confirm that the plans were acceptable and DSA was informed of decisions made during the schematic design phase.
- Preliminary cost estimates were developed to guide decisions to be taken throughout the design process and align expected construction cost with established project budgets.
- In mid-December, the Building User Group signed-off plans for the programming phase of design for the building. The Design Project Team worked in earnest on the early stages of schematic design.
- The Design Team and Campus Project Teams reached the completion of the schematic design phase. Drawings were submitted for review in late January. Any comments on the submitted drawings will be incorporated into the project documents in the upcoming phase of design. The Team also expects to receive the first look at the cost evolution of the project at this stage of design.
- BN Builders presented construction cost estimates for the Schematic Design phase. The Campus Project Team and estimating consultant O'Connor CM reviewed and discussed the details at a joint meeting on January 27, 2022. The cost estimates' trends will inform the evolution and development of upcoming design phases.

New Performing Arts Complex

- Southern California Edison (SCE) recommended a separate dedicated utility transformer to replace the existing setup, located at the future PAC location, and a new unit for the building based on strategizing on full capacities. At the time, there was no anticipated cost impact to the budget's State Contribution, as any additional equipment and installation cost associated with this change will be



PROJECT STATUS REPORT — FULLERTON CAMPUS

UPDATES ON CAMPUS PROJECTS - FULLERTON COLLEGE (Continued)

provided by SCE and the District using Measure J or local funds.

- The building Preliminary Plans and estimated costs were under review by the Department of Finance (DOF). As of early November, the review was tentatively scheduled for completion in January 2022. However, the District was informed of delays at the State division. Construction documents' preparation is expected to commence after DOF's review, comments, and approval.



Future Home of the New Performing Arts Complex

- The District requested a funding update in early December 2021. With the new legislative session that began in January 2022, the State's DOF and Senate took into consideration the request for additional funding for the project's construction. The Campus Project Team and District responded to questions formulated by the Senate on earlier project cost estimates, justifications of the recent cost increases, and the impacts that the completion of this project might have on other future projects slated for construction at the Campus. Results from the deliberations are anticipated by February with the approval of funding for working drawings. Value engineering is anticipated for the upcoming design phase of the project for alignment of budgets with the expected scopes of work.
- Kelly Sutherlin McLeod Architecture (KSM) is conducting a review of the design development drawings for concurrence with the historic context of surrounding buildings and the College Campus. A report was anticipated by the end of January for consideration into the upcoming development of construction documents.
- SCE conducted an interactive goal-setting session with the Project Design Team and Campus Project Team for energy savings by design. The review of opportunities incentives was based on the current design arrangement, glazing, material selection, and lighting needs. The team will evaluate pathways to achieve the selected goals and set requirements to be met for the following phase of design.



PROJECT STATUS REPORT — FULLERTON CAMPUS

UPDATES ON CAMPUS PROJECTS - FULLERTON COLLEGE (Continued)

Update / Improve Infrastructure

IT Network Refresh Project

- VectorUSA is anticipating additional impacts for the delivery of cabling due to shortages in the global supply of copper. Mitigation measures are underway and adjustments to the installation schedule will be conducted based on the availability of materials.
- Shortages on available supplies have expanded to components at in-wall boxes and cabling. Alternates for cabling are under evaluation for expediting ordering and procurement to keep the anticipated scheduling of activities and minimize disruption.
- Pre-configuration of edge switches and Uninterruptible Power Supplies (UPS) for Fullerton Campus are underway.
- Approximately 64 percent of the installation has been completed as of late December on the secondary MDF at Fullerton College.
- Shortages on available supplies expanded to components at in-wall boxes and cabling. VectorUSA experienced additional impacts for the delivery of cabling due to shortages in the global supplies of copper. Shortages and delays in deliveries of CAT6 cabling have caused minor delays in the completion of the bond-funded scope of work. Mitigation measures were taken as well as adjustments to the installation schedule which will be conducted based on the availability of materials.
- On the capital-funded scope of work, delays were more significant due to supply chain disruptions. The Voice-over-Internet Protocol (VoIP) migration, planning, and configuration, the installation of access points, the installation of switches, the installations at secondary MDFs, and cutover plans have been impacted and delayed. In recent conversations, suppliers have been unable to provide status updates on the availability of components. The District Project Team and VectorUSA will continue working with the manufacturers to explore possibilities in expediting deliveries. Meanwhile, an assessment of what activities can be accomplished or can be postponed once components are available for installation is underway. There is an impact on the overall project completion to the end of the year depending on the evolution of supply conditions.



AERIAL VIEW — ANAHEIM CAMPUS PROJECTS



Anaheim Campus Tower
First Floor Life/Safety Renovation
[Design - Design Development]

Swing Space Projects / Interim Housing
[Design - Construction Documents]

- ▶ Develop Interior and Exterior Signage [Design]
- ▶ IT Network Refresh (Throughout Campus)
[Implementation]



PROJECT STATUS REPORT — ANAHEIM CAMPUS

SWING SPACE PROJECTS / INTERIM HOUSING

DESIGN - CONSTRUCTION DOCUMENTS

Address 1830 W. Romneya Dr.
Anaheim, CA 92801

Project Manager Richard Williams
District Director
Facilities, Planning, and
Construction

Architect SVA Architects, Inc.

Project Delivery Method Design-Bid-Build



Project Overview

As a result of the upcoming project to complete extensive repairs due to water intrusion at the Upper Deck Parking Lot, there is a need to temporarily relocate classrooms and facilities located on the 1st floor of the Anaheim-NOCE Campus before the start of construction activities. These new temporary modular buildings will allow for NOCE's instruction activities to continue during the repairs to the existing structure. Included are the design, assembly, construction, rent, and dismantling of 12 modular classrooms and associated facilities. The temporary relocation of Cypress College's Culinary Arts is also part of this effort with an anticipated cost of \$2.5 million. A budget is under development for this portion of the project.

- Total Project Budget\$2,000,000
- Funding SourceMeasure J
- Project Gross Square Footage.....TBD
- Estimated Construction Start.....Spring 2022
- Targeted Construction CompletionSummer 2022
- Temporary Structures Anticipated DismantlementFall 2024

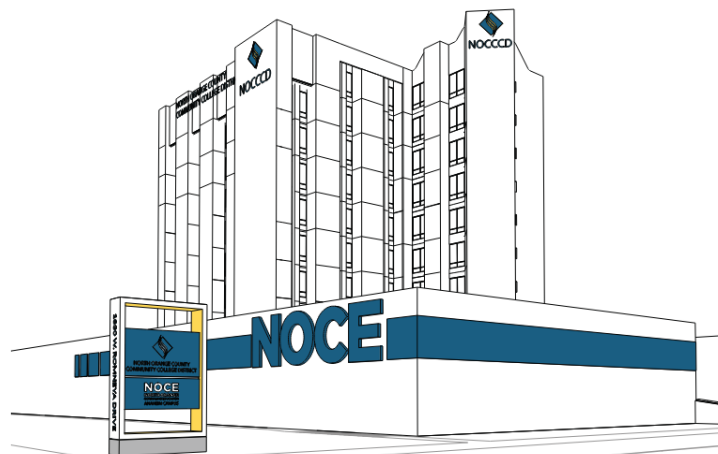


PROJECT STATUS REPORT — ANAHEIM CAMPUS

DEVELOP INTERIOR AND EXTERIOR SIGNAGE

DESIGN

Address	1830 W. Romneya Dr.
Project Manager	Richard Williams
Manager	District Director
Architect	Facilities, Planning, and Westberg + White
Project Delivery Method	TBD



Project Overview

Furnish and install new informational and wayfinding signage at indoor and outdoor spaces throughout the Anaheim Campus based on a uniform design standard under development by Westberg White Architecture.

- Total Project Budget\$363,200
- Funding SourceMeasure J & Local
 - Measure J\$313,800
 - Local\$49,400
- Project Gross Square Footage.....N/A
- Estimated Construction Start.....Summer 2022
- Targeted CompletionFall 2022



PROJECT STATUS REPORT — ANAHEIM CAMPUS

ANAHEIM CAMPUS TOWER FIRST FLOOR LIFE/SAFETY RENOVATION DESIGN - DESIGN DEVELOPMENT

Address 1830 W. Romneya Dr.
Anaheim, CA 92801

Project Manager Richard Williams
District Director
Facilities, Planning, and
Construction

Architect SVA Architects

Project Delivery Method Design-Bid-Build



Project Overview

Based on a recent study on water intrusion completed in late 2018 by R2A Architecture in collaboration with KPFF, Rodriguez Engineering, Inc. and Allana Buick & Bers, Inc. several extensive repairs are needed to mitigate and limit the points of water intrusion through the upper deck parking lot surrounding the Anaheim tower.

- Total Project Budget\$10,913,000
- Funding SourceMeasure J & State
 - Measure J\$2,183,000
 - State\$8,730,000
- Project Gross Square Footage.....61,952 ASF
- Estimated Construction Start.....Fall 2022
- Targeted CompletionFall 2023



PROJECT STATUS REPORT — ANAHEIM CAMPUS

UPDATE/IMPROVE INFRASTRUCTURE

IMPLEMENTATION

Address	1830 W. Romneya Dr. Anaheim, CA 92801	Total Project Budget	\$1,766,540 (Measure J)
		Total Budget Allocated	\$1,097,250 (Measure J)
Number of Projects	2	Funding Source	Measure J & Capital Outlay

General Overview

Projects to address infrastructure improvements or upgrades throughout the Campus. Funds are allocated to projects as needs are identified.

IT Network Refresh Project Overview

IMPLEMENTATION

Assessment of Campus data network infrastructure to identify necessary upgrades, and changes that will enable supporting future Campus needs; specifically addressing wired, wireless, voice, and video networks. Design of a new network will account for the District's needs specific to logical infrastructure for the next 10 years. Physical infrastructure will also account for the District's needs for the next 20 years. The scope includes replacing network core switches, providing a more responsive support structure, preparing for cloud computing, and adaptation of voice over IP systems across the District.

- Project Budget..... \$5,610,152
 - Current Implementation (Measure J) \$754,209
 - Current Implementation (Capital Outlay) \$4,610,512
 - Upcoming Phases (Measure J) \$245,791
- Funding Source Measure J & Capital Outlay Funds
- Project Delivery Method California Multiple Award Schedule (CMAS)
- Design Implementation..... VectorUSA
- Architect..... Shandam Consulting
- Project Management District IS / PlanNet Consulting
- Design Implementation Start..... November 2019
- Targeted Completion July 2022



PROJECT STATUS REPORT — ANAHEIM CAMPUS

UPDATES ON CAMPUS PROJECTS - ANAHEIM CAMPUS

Swing Space Projects / Interim Housing

- In November, design considerations were taken to avoid the relocation of existing fire hydrants in the location for the temporary structures. The Project Design Team made revisions to the site plan that took into account the need for a food pantry. Classrooms and restroom buildings were rearranged to reduce the amount of grading in the area.
- Analysis of seating arrangements for the temporary classrooms was also underway alongside layouts for admissions, counseling, and the food pantry to allow for an interior courtyard space in the modular complex. Planning for furniture rentals and installation is anticipated for August 2022.
- The relocation of the Print Shop and Mail Room underwent further investigation. Plausible areas for the relocation included the first floor of Building B and the Central Plant's second floor. SVA Architects conducted a preliminary application meeting with DSA on December 14th, 2021 to confirm their expectations from the State agency. Based on the feedback from the meeting, the Architect of Record will refine the schedule as appropriate. The Campus Project Team coordinated with the Anaheim Fire Department for their review of the planned temporary facilities.
- SVA Architects completed the temporary building layout and worked on plumbing, electrical, data, and landscaping plans for the swing space site. A water-pressure test was successfully conducted on the existing fire hydrants in compliance with requirements by DSA before construction document submittal. The final set of construction documents became available to the Campus Project Team for review in late January.
- The Architect of Record worked in earnest on the set of Construction Documents for review by the Campus Project Team before submittal to DSA for review. The Campus Project Team reviewed the submitted preliminary construction documents. Questions were posed to the Architect of Record regarding site grading, the pedestrian paths of travel, temporary signage, and parking lot striping.



Swing Space / Interim Housing Future Location — July 2021



PROJECT STATUS REPORT — ANAHEIM CAMPUS

UPDATES ON CAMPUS PROJECTS - ANAHEIM CAMPUS (Continued)

Responses and comments will be incorporated into the final version being prepared for submittal to DSA.

- A final layout for the temporary modular structure underwent development based on feedback from DSA. In January, an agenda item was presented to the Board of Trustees for the leasing of the modular buildings for Interim Housing during the repairs to the upper deck. Costs included the assembly, maintenance during the occupancy, and dismantling as well as the removal of the units upon completion of the lease period. Furniture will be installed as the construction work on the temporary modular structures is completed by the late summer of 2022.
- The Campus Project Team continued coordinating with CSI Fullmer for furniture requirements at the swing space temporary modular structures. Preliminary setups for spaces such as Admissions & Records, Student Services, and Counseling were provided for review and concurrence from the building user groups.
- The Cypress Campus Project Team worked with architects for the tentative location on Campus of a DSA-approved modular structure equipped with a demonstration kitchen for the Culinary Arts program. This temporary structure will be in use by the Culinary Arts while work at the upper parking deck and first floor are completed at the Anaheim Campus. Feasibility and schedule evaluations are underway.
- The Design Team continued coordinating the site and utility plans with modular unit layouts in preparation for submittal to DSA on February 28th, 2022. A detailed estimate for construction will be available for the Campus Project Team's assessment and evaluation.

Anaheim Campus Tower First Floor Life/Safety Renovation

- SVA Architects conducted a preliminary application meeting with DSA on December 14th, 2021 to confirm their expectations from the State agency. Based on the feedback from the meeting, the Architect of Record (AOR) refined the schedule as appropriate. The Design Team pursued the water intrusion project as a maintenance project with the new surfacing over existing parking areas exempt from DSA review.
- A preliminary meeting took place on December 15th with DSA on standards for expectation for ADA compliance and access pathways. SVA Architects worked on a series of follow-up items and the potential for a request to waiver on some requirements based on the anticipated scope of work.



PROJECT STATUS REPORT — ANAHEIM CAMPUS

UPDATES ON CAMPUS PROJECTS - ANAHEIM CAMPUS (Continued)

Develop Interior and Exterior Signage

- NOCE and the Building User Groups reviewed the revised exterior signage standards provided by the projects' architects, Westberg + White. Review comments were incorporated into the final version. The Campus Project Team continued coordinating with the Design Team on the plan for all exterior signage for the Campus. The bidding and fabrication of new signage are anticipated in the first and second quarter of 2022, with potential installation during summer of 2022. Budget adjustments are pending completion of pricing for the project's scope of work.

Update / Improve Infrastructure

IT Network Refresh Project

- The secondary Uninterruptible Power Supplies (UPS) for the Campus were delivered and installed at the designated locations.
- Shortages on available supplies expanded to components at in-wall boxes and cabling. VectorUSA experienced additional impacts for the delivery of cabling due to shortages in the global supplies of copper. Shortages and delays in deliveries of CAT6 cabling have caused minor delays in the completion of the bond-funded scope of work. Mitigation measures were taken as well as adjustments to the installation schedule which will be conducted based on the availability of materials.
- On the capital-funded scope of work, delays were more significant due to supply chain disruptions. The Voice-over-Internet Protocol (VoIP) migration, planning, and configuration, the installation of access points, the installation of switches, the installations at secondary MDFs, and cutover plans have been impacted and delayed. In recent conversations, suppliers have been unable to provide status updates on the availability of components. The District Project Team and VectorUSA will continue working with the manufacturers to explore possibilities in expediting deliveries. Meanwhile, an assessment of what activities can be accomplished or can be postponed once components are available for installation is underway. There is an impact on the overall project completion to the end of the year depending on the evolution of supply conditions.



COMPLETED PROJECTS

- CYPRESS CAMPUS
- FULLERTON CAMPUS
- NOCE—ANAHEIM CAMPUS & DISTRICT OFFICES



COMPLETED PROJECTS

Cypress Campus

Project Name	Funding Sources	Final Project Cost	Completion Date
Swing Space Projects - Gym II Improvements	Measure J	\$153,397	July 2018
Swing Space Projects - Parking Lot 5 Realignment	Measure J	\$1,965,399	September 2018



Completed Parking Lot 5 Realignment from the Library & Learning Resource Center (LLRC) at Cypress College

Mass Communication & Security Systems Upgrade: Safety Film	Measure J	\$145,772	January 2019
Mass Communication & Security System Upgrade: Door Replacement	Measure J	\$50,898	January 2019
Update / Improve Infrastructure: Central Plant Upgrades	Measure J	\$58,768	October 2020
Baseball Field Improvements	Measure J and Local	Meas. J = \$1,932,981 Local = \$171,000	May 2021

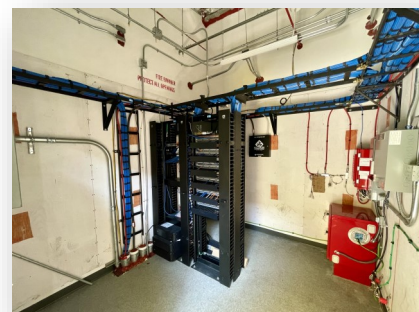
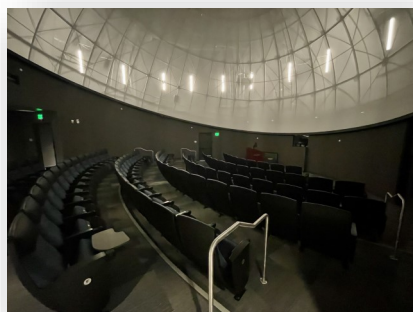


Completed Baseball Field Improvements at Cypress College

COMPLETED PROJECTS

Cypress Campus (continued)

Project Name	Funding Sources	Final Project Cost	Completion Date
New Science, Engineering, and Mathematics Building	Measure J Local Federal	Meas J = \$94,068,202 Local = \$3,000,000 Federal = \$492,521 Sche. Maint. = \$44,879	September 2021
Update / Improve Infrastructure (New SEM)	Measure J	\$3,055,711	September 2021
Update / Improve Infrastructure (IT-New SEM)	Measure J	\$645,883	September 2021
Mass Communications & Security Systems Upgrade (New SEM)	Measure J	\$389,367	September 2021

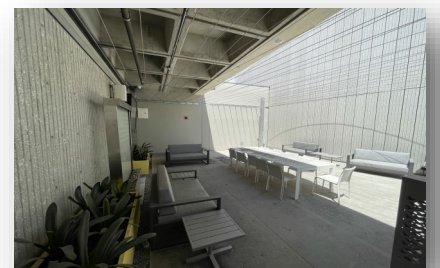
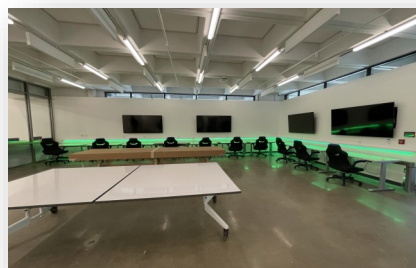


Completed New Science, Engineering, and Mathematics Building at Cypress College

COMPLETED PROJECTS

Cypress Campus (continued)

New Veteran's Resource Center / Student Activities Center Expansion	Measure J Local	Meas J. = \$13,411,167 Local = \$89,764	July 2021
Update / Improve Infrastructure (VRC/SAC)	Measure J	\$1,144,756	July 2021
Update / Improve Infrastructure (IT-VRC/SAC)	Measure J	\$252,530	July 2021
Mass Communications & Security Systems Upgrade (VRC/SAC)	Measure J	\$60,938	July 2021



Completed New VRC / SAC at Cypress College

COMPLETED PROJECTS

Cypress Campus (continued)

Veteran's Memorial Bridge, Plaza, and Tribute Garden	Measure J Local	Meas J. = \$100,800 Local = \$1,500,000	July 2021
---	----------------------------------	--	-----------



Completed Veteran's Memorial Bridge, Plaza, and Tribute Garden at Cypress College

Pond Refurbishment	Local	\$737,637	July 2021
--------------------	--------------	------------------	-----------



Completed Pond Refurbishment at Cypress College

COMPLETED PROJECTS

Fullerton Campus

Project Name	Funding Sources	Final Project Cost	Project Start Date	Completion Date
Update and Improve Infrastructure / Buildings 300-500 Sewer Line	Measure J and Scheduled Maintenance	Meas. J = \$444,702 Local = \$85,559	May 2018	July 2020



Completed Sewer Line Replacement to Buildings 300 and 500 at Fullerton College

Project Name	Funding Sources	Final Project Cost	Completion Date
Greenhouse Replacement	Measure J and Local	Meas. J = \$834,381 Local = \$817,724	August 2021



Completed Greenhouse Replacement at Fullerton College

COMPLETED PROJECTS

Fullerton Campus (Continued)

Project Name	Funding Sources	Final Project Cost	Completion Date
Central Plant Replacement & Expansion	Measure J	Meas. J = \$10,600,000	September 2021



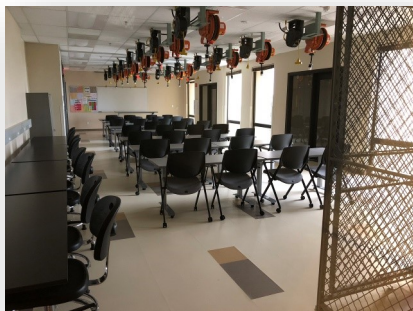
Completed Central Plant Replacement & Expansion at Fullerton College



COMPLETED PROJECTS

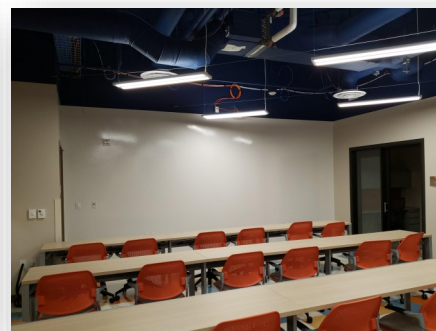
NOCE—Anaheim Campus & District Offices

Project Name	Funding Sources	Final Project Cost	Completion Date
5th Floor CTE Laboratory and 2nd Floor Room 215	Measure J	\$640,736	September 2018



Views of the Completed 5th Floor CTE Lab for North Orange Continuing Education at Anaheim Campus

Project Name	Funding Sources	Final Project Cost	Completion Date
7th and 10th Floors Buildout	Measure J and Measure X	Meas. J = \$959,764 Meas. X = \$4,252,430	June 2019



Completed lobby and co-working spaces on the 7th and 10th Floors at Anaheim Campus



COMPLETED PROJECTS

NOCE—Anaheim Campus & District Offices (continued)

Project Name	Funding Sources	Final Project Cost	Completion Date
Secondary MDF Room	Measure J	\$97,250	March 2021



Views of the Secondary MDF Room at the Anaheim Campus Central Plant Mezzanine

FINANCIAL REVIEW

- Capital Projects Update
- Estimated Project Budgets
- 90-Day Look Ahead Schedule

CAPITAL PROJECT UPDATES

**North Orange County Community College District
Measure J
Capital Projects Update
As of January 31, 2022**

Bond Authorization:

Bond Authorization	574,000,000	100.00%
Bonds Sold - Series A + B	250,000,000	43.55%
Available Principal Amount of Bonds	324,000,000	56.45%

Bond Funding Sources (Budget):

		Actual Received	Remaining Balance
Bond Authorization	574,000,000	250,000,000	324,000,000
Estimated Net Interest Earnings	11,000,000	9,443,431	1,556,569
Totals	585,000,000	259,443,431	325,556,569

Cost Status:

Campus	Total Budget	%	Actual Expenses to Date	Remaining Balance
Anaheim Campus	23,607,800	4.03%	2,546,408	21,061,392
Cypress Campus	225,921,200	38.62%	118,411,883	107,509,317
Fullerton Campus	311,126,400	53.18%	64,668,711	246,457,689
District Expenses				
• Program Management	20,000,000	3.42%	6,498,852	13,501,148
• Bond Issuance Cost	3,544,600	0.61%	1,301,760	2,242,840
• Other Bond Expense	800,000	0.14%	377,452	422,548
Totals	585,000,000	100.00%	193,805,066	391,194,934



ESTIMATED PROJECT BUDGETS

CYPRESS CAMPUS

CURRENT PROJECTS

PROJECT BUDGET/VARIANCE REPORT—CYPRESS

CURRENT PROJECTS	Measure J Budget OCT FY 2021-22	Measure J Budget JAN FY 2021-22	Variance	Measure J Expenses	Balance
Swing Space Projects	\$ 1,034,003	\$ 1,034,003	\$ -	\$ 9,331	\$ 1,024,672
Swing Space Fine Arts (Old SEM)	\$ 5,626,285	\$ 5,626,285	\$ -	\$ 296,807	\$ 5,329,478
Swing Space Tech I/ Tech III (Old SEM)	\$ -	\$ -	\$ -	\$ -	\$ -
Swing Space Culinary Arts (Temp. Facility)	\$ -	\$ -	\$ -	\$ -	\$ -
Fine Arts Building Renovation	\$ 33,413,861	\$ 33,413,861	\$ -	\$ 1,099,417	\$ 32,314,444
Update/Improve Infrastructure	\$ 8,094,406	\$ 8,094,406	\$ -	\$ -	\$ 8,094,406
Update/Improve Infrastructure (IT)	\$ 5,101,587	\$ 5,101,587	\$ -	\$ 2,013,408	\$ 3,088,179
Update/Improve Infrastructure (Under Piazza & Stairwell Restoration)	\$ 3,300,000	\$ 3,300,000	\$ -	\$ 48,457	\$ 3,251,543
Update/Improve Infrastructure (Piazza Above SAC)	\$ 3,000,000	\$ 3,000,000	\$ -	\$ -	\$ 3,000,000
Library-Learning Resource Center Expansion	\$ 5,038,665	\$ 5,038,665	\$ -	\$ 38,665	\$ 5,000,000
Central Plant Upgrade	\$ 7,000,000	\$ 7,000,000	\$ -	\$ -	\$ 7,000,000
Mass Communications & Security Systems Upgrade	\$ 1,942,855	\$ 1,942,855	\$ -	\$ -	\$ 1,942,855
Campus-Wide Security Systems Upgrade	\$ 2,058,670	\$ 2,058,670	\$ -	\$ 58,670	\$ 2,000,000
Pool Restoration and Upgrade	\$ 3,909,470	\$ 3,909,470	\$ -	\$ -	\$ 3,909,470
Tech I/Tech III CTE Complex	\$ 28,337,107	\$ 28,337,107	\$ -	\$ -	\$ 28,337,107
Planning (Non Project Specific)	\$ 544,000	\$ 544,000	\$ -	\$ 484,801	\$ 59,199
Gym I/Gym II Restoration and Restrooms	\$ -	\$ -	\$ -	\$ -	\$ -
Under Piazza & Stairwell Restoration	\$ -	\$ -	\$ -	\$ -	\$ -
Gateway Phase 1	\$ -	\$ -	\$ -	\$ -	\$ -
Athletic Field Realignment/Entry Revisions/Parking Lot Improvements	\$ -	\$ -	\$ -	\$ -	\$ -
COMPLETED PROJECTS					
New Science, Engineering, and Mathematics Building	\$ 94,068,202	2 \$ 94,068,202	\$ -	\$ 93,252,427	\$ 815,775
Update/Improve Infrastructure (New SEM)	\$ 3,055,711	2 \$ 3,055,711	\$ -	\$ 2,998,566	\$ 57,145
Mass Communications & Security Systems Upgrade (New SEM)	\$ 389,367	2 \$ 389,367	\$ -	\$ 312,184	\$ 77,183
Update/Improve Infrastructure (IT - New SEM)	\$ 645,883	2 \$ 645,883	\$ -	\$ 40,877	\$ 605,006
New Veterans' Resource Center & Student Activities Center Expansion	\$ 13,411,167	2 \$ 13,411,167	\$ -	\$ 12,133,301	\$ 1,277,866
Update/Improve Infrastructure (VRC/SAC)	\$ 1,144,756	2 \$ 1,144,756	\$ -	\$ 1,134,003	\$ 10,753
Mass Communications & Security Systems Upgrade (VRC/SAC)	\$ 60,938	2 \$ 60,938	\$ -	\$ 58,955	\$ 1,983
Update/Improve Infrastructure (IT - VRC/SAC)	\$ 252,530	2 \$ 252,530	\$ -	\$ 54,387	\$ 198,143
Veterans' Memorial Bridge and Tribute Garden	\$ 100,800	2 \$ 100,800	\$ -	\$ -	\$ 100,800
Baseball Field Improvements	\$ 1,932,981	2 \$ 1,932,981	\$ -	\$ 1,919,671	\$ 13,310
Swing Space - Gym II Renovation	\$ 153,397	\$ 153,397	\$ -	\$ 153,397	\$ -
Swing Space - Parking Lot 5 Expansion	\$ 1,965,399	\$ 1,965,399	\$ -	\$ 1,965,399	\$ -
Swing Space - Old SEM (Roofing)	\$ 47,747	\$ 47,747	\$ -	\$ 47,747	\$ -
Swing Space - Other	\$ 35,975	\$ 35,975	\$ -	\$ 35,975	\$ -
Update/Improve Infrastructure (Central Plant Enhancements)	\$ 58,768	\$ 58,768	\$ -	\$ 58,768	\$ -
Mass Communications & Security Systems Upgrade (Safety Film)	\$ 145,772	\$ 145,772	\$ -	\$ 145,772	\$ -
Mass Communications & Security Systems Upgrade (Door Replacement)	\$ 50,898	\$ 50,898	\$ -	\$ 50,898	\$ -
Total	\$ 225,921,200	\$ 225,921,200	\$ -	\$ 118,411,883	\$ 107,509,317

1. 2021-051-CC - Project Encumbrance Transfer Request is required to increase Measure J funding on the Planning - (Non-Project Specific).
2. Financial close-out is in progress. Contract balances will be transferred to active projects.



ENCUMBRANCES OVER \$10,000

CYPRESS CAMPUS - New Encumbrances (Nov. 2021 - Jan. 2022)

Project	Vendor	Purchase Order No.	Purchase Order Amount	Scope of Work
Fine Arts Building Renovation	Division of the State Architect	P0147404	\$120,562.20	DSA Review
New SEM	Biopac System Inc.	P0145222	\$17,280.00	Laboratory Equipment
New SEM	CSI Fullmer	P0144822	\$154,422.00	Furniture Fixtures & Equipment
New SEM	CSI Fullmer	P0145981	\$173,609.07	Furniture Fixtures & Equipment
New SEM	Fotronics Corporation	P0144882	\$79,965.87	Laboratory Equipment
New SEM	Krueger International Inc.	P0144850	\$894,068.05	Furniture Fixtures & Equipment
New SEM	Rapids Wholesales Inc.	P0145126	\$14,691.71	Furniture Fixtures & Equipment
New SEM	Tinius Olsen Testing Machine Company	P0147935	\$67,568.96	Provide Professional Service-Testing Machine
New SEM	United Scope LLC	P0145224	\$22,028.39	Laboratory Equipment
Planning-CC (Non Project Specific)	Geotechnical Solutions Inc.	P0146422	\$15,000.00	Professional Service—Consultant
Planning-CC (Non Project Specific)	Rodriguez Engineering Inc.	P0145827	\$24,000.00	Professional Service—Consultant
Swing Space—Fine Arts (Old SEM)	Division of the State Architect	P0147552	\$22,320.00	DSA Review
Swing Space—Fine Arts (Old SEM)	Wenger Corp	P0149168	\$169,334.85	Furniture Fixtures & Equipment



ESTIMATED PROJECT BUDGETS

FULLERTON CAMPUS

CURRENT PROJECTS

PROJECT BUDGET/VARIANCE REPORT—FULLERTON

CURRENT PROJECTS	Measure J Budget OCT FY 2021-22	Measure J Budget JAN FY 2021-22	Variance	Measure J Expenses	Balance
New Instructional Building	\$ 53,588,031	\$ 53,588,031	\$ -	\$ 49,220,584	\$ 4,367,447
Renovate Buildings 300	\$ 20,482,000	\$ 20,482,000	\$ -	\$ 1,141,702	\$ 19,340,298
New M & O Building	\$ 6,758,944	\$ 6,758,944	\$ -	\$ 31,884	\$ 6,727,060
Chapman / Newell Instructional Building	\$ 21,985,777	\$ 21,985,777	\$ -	\$ 43,456	\$ 21,942,321
New Performing Arts Complex—Demolish Buildings 1100 and 1300	\$ 30,724,153	\$ 30,724,153	\$ -	\$ 846,595	\$ 29,877,558
New Welcome Center & Lot C West	\$ 37,353,872	\$ 37,353,872	\$ -	\$ -	\$ 37,353,872
New Horticulture/Lab School/STEM Lab	\$ 33,813,764	\$ 33,813,764	\$ -	\$ -	\$ 33,813,764
Renovate Building 840 Campus Services	\$ 7,878,400	\$ 7,878,400	\$ -	\$ -	\$ 7,878,400
Demolish Building 2000	\$ 1,108,000	\$ 1,108,000	\$ -	\$ -	\$ 1,108,000
New Parking Structure	\$ 11,219,260	\$ 11,219,260	\$ -	\$ -	\$ 11,219,260
Update/Improve Infrastructure	\$ 23,162,352	\$ 23,162,352	\$ -	\$ -	\$ 23,162,352
Update/Improve Infrastructure (IT)	\$ 7,721,018	\$ 7,721,018	\$ -	\$ 3,112,621	\$ 4,608,397
Update/Improve Infrastructure (IT - Instructional Bldg.)	\$ 278,982	\$ 278,982	\$ -	\$ -	\$ 278,982
New Thermal Energy Storage (TES)	\$ 10,139,524	\$ 10,139,524	\$ -	\$ -	\$ 10,139,524
Renovate Building 600	\$ 3,117,641	\$ 3,117,641	\$ -	\$ -	\$ 3,117,641
Renovate Health Center	\$ 1,328,800	\$ 1,328,800	\$ -	\$ -	\$ 1,328,800
Renovate Faculty Lounge & Offices	\$ 6,212,250	\$ 6,212,250	\$ -	\$ -	\$ 6,212,250
Renovate Wellness Center	\$ 2,534,400	\$ 2,534,400	\$ -	\$ -	\$ 2,534,400
Landscape & Hardscape Improvements	\$ 3,840,000	\$ 3,840,000	\$ -	\$ -	\$ 3,840,000
Renovate Building 3100	\$ 2,402,940	\$ 2,402,940	\$ -	\$ -	\$ 2,402,940
Demolish Building 1901-04, 1956-60, 3000	\$ 1,333,000	\$ 1,333,000	\$ -	\$ -	\$ 1,333,000
Parking Lot Improvements at Building 3000	\$ 1,999,500	\$ 1,999,500	\$ -	\$ -	\$ 1,999,500
Renovate Building 2100	\$ 8,277,500	\$ 8,277,500	\$ -	\$ -	\$ 8,277,500
Demolish Buildings 2200 & 3104	\$ 1,392,209	\$ 1,392,209	\$ -	\$ -	\$ 1,392,209
Planning (Non Project Specific)	\$ 595,000	\$ 595,000	\$ -	\$ 242,446	\$ 352,554
COMPLETED PROJECTS					
Central Plant Replacement & Expansion	\$ 10,600,000	1 \$ 10,600,000	\$ -	\$ 8,943,442	\$ 1,656,558
Greenhouse Replacement	\$ 834,381	1 \$ 834,381	\$ -	\$ 641,279	\$ 193,102
Update/Improve Infrastructure (Bldg 300-500 Sewer Line)	\$ 444,702	\$ 444,702	\$ -	\$ 444,702	\$ -
Total	\$ 311,126,400	\$ 311,126,400	\$ -	\$ 64,668,711	\$ 246,457,689

1. Financial close-out is in progress. Contract balances will be transferred to active projects.



ENCUMBRANCES OVER \$10,000

FULLERTON CAMPUS - New Encumbrances (Nov. 2021 - Jan. 2022)

Project	Vendor	Purchase Order No.	Purchase Order Amount	Scope of Work
Chapman / Newell Instructional Building	Dovetail Decision Consultant Inc.	P0148662	\$112,650.00	Professional Services—FF&E Consultant
New Instructional Building	CSI Fullmer	P0146934	\$157,609.69	Furniture Fixtures &
New Instructional Building	Controlled Key Systems	P0145707	\$44,956.40	Furniture Fixtures & Equipment
New Instructional Building	Krueger International Inc.	P0148730	\$13,225.77	Furniture Fixtures & Equipment
New Instructional Building	Krueger International, Inc.	P0143569	\$153,518.97	Furniture Fixtures & Equipment
New Instructional Building	Victor Stanley Inc.	P0148587	\$34,729.56	Furniture Fixtures & Equipment
New M&O Building	Dovetail Decision Consultant Inc.	P0148658	\$92,700.00	Professional Services— FF&E Consultant
Planning –FC (Non Project specific)	P2S Engineering Inc.	P0146867	\$20,500.00	Professional Services— Feasibility Study to relocate electrical /telecom
Renovate Building 300	R2A Architecture	P0148326	\$67,877.00	Building 300 Architectural Services
Renovate Building 300	R2A Architecture	P0149492	\$43,710.00	Building 300 Architectural Services



ESTIMATED PROJECT BUDGETS

ANAHEIM CAMPUS

CURRENT PROJECTS

PROJECT BUDGET/VARIANCE REPORT—ANAHEIM

CURRENT PROJECTS	Measure J Budget OCT FY 2021-22	Measure J Budget Jan FY 2021-22	Variance	Measure J Expenses	Balance
Update/Improve Infrastructure	\$ 661,133	\$ 669,290	\$ 8,157	\$ -	\$ 669,290
Update/Improve Infrastructure (IT)	\$ 1,000,000	\$ 1,000,000	\$ -	\$ 772,680	\$ 227,320
Develop Interior and Exterior Signage	\$ 313,800	\$ 313,800	\$ -	\$ -	\$ 313,800
Second Floor Tenant Improvements	\$ 813,000	\$ 813,000	\$ -	\$ -	\$ 813,000
Swing Space Projects/ Interim Housing	\$ 2,000,000	\$ 2,000,000	\$ -	\$ -	\$ 2,000,000
Anaheim Campus Tower First Floor Life/Safety Renovation	\$ 2,183,000	\$ 2,183,000	\$ -	\$ 42,503	\$ 2,140,497
Upper Deck Enhancements	\$ 309,901	\$ 309,901	\$ -	\$ 24,000	\$ 285,901
1st. Floor Remodel Student Center and Classrooms	\$ 2,352,720	\$ 2,352,720	\$ -	\$ -	\$ 2,352,720
Pedestrian and Vehicular Traffic Flow	\$ 2,329,000	\$ 2,329,000	\$ -	\$ -	\$ 2,329,000
4th Floor Improvements	\$ 218,000	\$ 218,000	\$ -	\$ -	\$ 218,000
Outdoor Patio Remodel	\$ 1,382,500	\$ 1,382,500	\$ -	\$ -	\$ 1,382,500
Develop Drop-Off Plaza at Romneya Drive	\$ 569,000	\$ 569,000	\$ -	\$ -	\$ 569,000
Develop Intersection at Romneya & Coronet	\$ 773,631	\$ 773,631	\$ -	\$ -	\$ 773,631
Holding Account	\$ 6,600,000	\$ 6,600,000	\$ -	\$ -	\$ 6,600,000
Planning (Non Project Specific)	\$ 440,000	\$ 396,208	\$ (43,792)	\$ 9,475	\$ 386,733
COMPLETED PROJECTS					
Update/Improve Infrastructure (Secondary MDF)	\$ 105,407	\$ 97,250	\$ (8,157)	\$ 97,250	\$ (0)
7th and 10th Floors Buildout	\$ 915,972	\$ 959,764	\$ 43,792	\$ 959,764	\$ (0)
5th Floor CTE & 2nd Floor Room 215	\$ 640,736	\$ 640,736	\$ -	\$ 640,736	\$ -
Total	\$ 23,607,800	\$ 23,607,800	\$ 0	\$ 2,546,408	\$ 21,061,392

1. Financial close-out is in progress. Contract balances will be transferred to active projects.



ENCUMBRANCES OVER \$10,000

ANAHEIM CAMPUS - New Encumbrances (Nov. 2021 - Jan. 2022)

Project	Vendor	Purchase Order No.	Purchase Order Amount	Scope of Work
Anaheim Campus Tower First Floor Life/Safety Renovation	VCA Engineers Inc.	P0149052	\$63,000.00	Professional Services— Surveying
Planning-AC (Non Project-	PBK-WLC Architects	P0149060	\$60,000.00	Architectural Consulting
Swing Space Project / Interim Housing	Division of State Architect	P0149521	\$16,830.00	DSA Review



ESTIMATED PROJECT BUDGETS

DISTRICT

PROJECT BUDGET/VARIANCE REPORT—DISTRICT

DISTRICT WIDE EXPENSE	Measure J Budget OCT FY 2021-22	Measure J Budget JAN FY 2021-22	Variance	Measure J Expenses	Balance
Program Management Fees	\$ 20,000,000	\$ 20,000,000	\$ -	\$ 6,498,852	\$ 13,501,148
Bond Issuance Cost	\$ 3,544,600	\$ 3,544,600	\$ -	\$ 1,301,760	\$ 2,242,840
Other	\$ 800,000	\$ 800,000	\$ -	\$ 377,452	\$ 422,548
Total	\$ 24,344,600	\$ 24,344,600	\$ -	\$ 8,178,064	\$ 16,166,536



ENCUMBRANCES OVER \$10,000

DISTRICT - New Encumbrances (Nov. 2021 - Jan. 2022)

No Purchase Orders over \$10,000 have been issued for the District as of January 31, 2022



ACTIVE PROJECTS

90 - DAY LOOK AHEAD



NORTH ORANGE COUNTY COMMUNITY COLLEGE DISTRICT

CYPRESS - FULLERTON - ANAHEIM (NOCE)

90-DAY LOOK AHEAD SCHEDULE

(02-01-22 TO 04-30-22)



	February				March					April				Comments
	1	8	15	22	1	8	15	22	29	5	12	19	26	
GENERAL														
NOCCCD Board Meetings														February 22nd, March 8th, and March 22nd (meeting held via Zoom)
COC Meetings														March 2nd (In Person Meeting)
Bond Program Management Team Mtgs.														February 15th, March 15th, and April 12th (meeting held via Zoom)
PLANNING														
CYPRESS														
Central Plants Upgrades														In Progress
DESIGN PHASE														
ANAHEIM														
Anaheim Campus Tower First Floor Life/Safety Renovation														
Design Development														In Progress
Swing Space / Interim Housing														
Construction Documents														In Progress
Develop Interior and Exterior Signage														
Construction Documents														In Progress
FULLERTON														
New Performing Arts Complex														
Construction Documents														Upcoming - February 14th
New M&O Building														
Design Development														In Progress
Constructioin Documents														Up Coming - May 30th
Chapman/Newell Instructional Building														
Design Development														In Progress
Construction Documents														Up Coming - May 30th
Renovate 300 Building														
Seismic Redesign														In Progress
DSA PHASE & AGENCY REVIEW														
ANAHEIM														
Swing Space Interim Housing														Up Coming - March 1st
CYPRESS														
Fine Arts Building Renovation														In Progress
Swing Space Project - Fine Arts														In Progress
BIDDING														
CYPRESS														
Swing Space														Up Coming - March 1st
Anaheim														
Develop Interior and Exterior Signage														Up Coming - April 1st
PRE-CONSTRUCTION PHASE														
CONSTRUCTION PHASE														
CYPRESS														
Campus wide security systems upgrades														
Video Management Software Replacement (phase 1)														In Progress
Network Refresh														
FULLERTON														
Implementation - SolarWinds														IT management software & remote monitoring
ANAHEIM														
Implementation - SolarWinds														IT management software & remote monitoring
CYPRESS														
Implementation - VoIP Migration & E911														VoIP Phone Replacement and Migration
CO2 - Implementation														Edge Switch Hub and VoIP Verification



ACTIVE PROJECTS

90 - DAY LOOK AHEAD (Continued)



NORTH ORANGE COUNTY COMMUNITY COLLEGE DISTRICT

CYPRESS - FULLERTON - ANAHEIM (NOCE)

90-DAY LOOK AHEAD SCHEDULE

(02-01-22 TO 04-30-22)



	February				March					April				Comments
	1	8	15	22	1	8	15	22	29	5	12	19	26	
CLOSE-OUT PHASE														
CYPRESS														
Athletic Field Realignment - Baseball Clubhouse														In Progress
New SEM														In Progress
VRC/SAC														In Progress
Veterans' Memorial Bridge and Tribute Garden and Pond Refurb.														In Progress
Pond Refurbishment														In Progress
FULLERTON														
New Instructional Building														In Progress
Central Plant Expansion														In Progress
Greenhouse Replacement														In Progress

* Non-Measure J expenditure activities



March 2022

Citizens' Oversight Committee

COC

Measure J Bond Program



1830 W. Romneya Dr., Building B., Anaheim, CA 92801