



June 2022

1

## Capital Projects Report to the

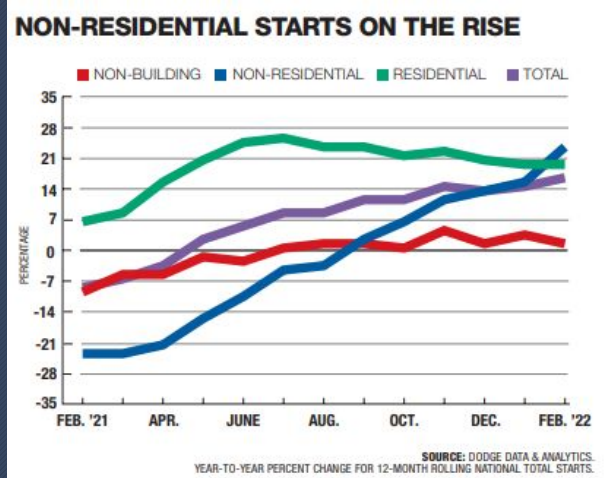
## Citizens' Oversight Committee

MAAS

Date 06/01/2022

# COVID-19 and Geopolitical Reverberations

2



- Abundance of new non-residential projects starting
- Labor shortages and tight labor market
- Inflation continues to be a major concern
- Material prices holding at high levels
- Material availability and backordering
- Added strain due to energy cost increases

Source: Engineering News-Record (ENR) May 10th, 2022

# Current IPP and FPP Status

3

Cypress	Fullerton	Anaheim
Fine Arts Building Renovation (FPP) Approved	New Performing Arts Complex (FPP) Approved	Anaheim Campus Tower First Floor Life/Safety Renovation (FPP) Approved
	Renovate Building 300 (FPP) In Review	
	STEM Vocational Center (FPP) Submitted	

# Measure J Cash Flow Projection Q1-2022

Issued to date: \$100M - Series A / \$150M - Series B

Forecasted series releases:

Series	Approximate Amount	Estimated Release Date
Series C	\$100M	October 2022
Series D	\$100M	January 2024
Series E	\$100M	October 2025
Series F	\$30M	October 2028



# Questions

# PROJECTS IN PLANNING, PROGRAMMING, DESIGN, AND CONSTRUCTION

6

- Campus Site Plans
- Project Status Reports

# Aerial View - Cypress Campus



Phase	
Planning	
Design	
Bidding	
Construction / Implementation	
Close-Out	



# Measure J Highlights Cypress College

## Fine Arts Building Renovation

- 100% Construction Documents are under review by DSA - Approval anticipated in late August 2022
- Completed study of additional potholing to identify and confirm location of existing telecommunication cables
- Inventory of chemicals in progress





# Updates on campus projects - Cypress College

## Swing Space - Fine Arts (Old SEM)

- The project Construction Documents received DSA approval on April 15th
- The bidding process began in late April and responses were received by the end of May
- NTP for construction anticipated on the first week of July



# Updates on campus projects - Cypress College

10

## Campus-Wide Security Systems Upgrade

- The Campus successfully conducted the test pilot program for the upcoming upgrades.
- Procurement for Phase I is underway for the new Video Management System (VMS) storage and programming based on results from the test pilot program
- Anticipated to be turned over to the Campus in July 2022

## Updates on campus projects - Cypress College

### Swing Space - Culinary Arts

- Temporary relocation to Cypress College as a result of the Anaheim Tower Life/Safety Renovation project
- Program will return to Anaheim Campus upon completion of repairs
- HPI Architecture selected as Architect of Record (AOR)
- Kick-off meeting took place on May 10th
- Procurement for modular kitchen from Mobile Kitchens
- Land survey in progress
- Construction Documents in progress



# Questions

# Aerial View - Fullerton Campus

13



Phase	
Planning	Green
Design	Blue
Planning / Final Project Proposal (FPP)	Cyan
Construction	Orange
Close-Out	Purple

# Updates on campus projects - Fullerton College

## Renovate Building 300

- R2A Architecture withdrew from the renovation as of April 8th
- Campus has approached several architects to take on the project
- Westberg White Architects Selected as the new Architect of Record
- Updates in State funding is anticipated in Q2-2022





# Updates on campus projects - Fullerton College

15

## Chapman / Newell Instructional Building and New M&O Building

- Final programming validation was received in early February to confirm developments of adjacencies
- Cost estimates exceeded construction budget at the end of Schematic Design
- An agreement was reached to move ahead with the Design Development phase to better understand the project's final requirements
- Budget reconciliation at end of design



# Updates on campus projects - Fullerton College

## Performing Arts Complex & Demolition Buildings 1100 and 1300

- A Construction Documents kick-off meeting was held on March 10th
- Meetings held with Building User Groups on April 29th to finalize last design modifications for Construction Documents
- Completion of Construction Documents Anticipated in August 2022 for submittal to DSA



# Updates on campus projects - Fullerton College

## Wilshire Chiller Plant Relocation

- Relocation needed in preparation for New Performing Arts Complex construction
- Feasibility study completed
- Coordination with SCE for relocation of equipment

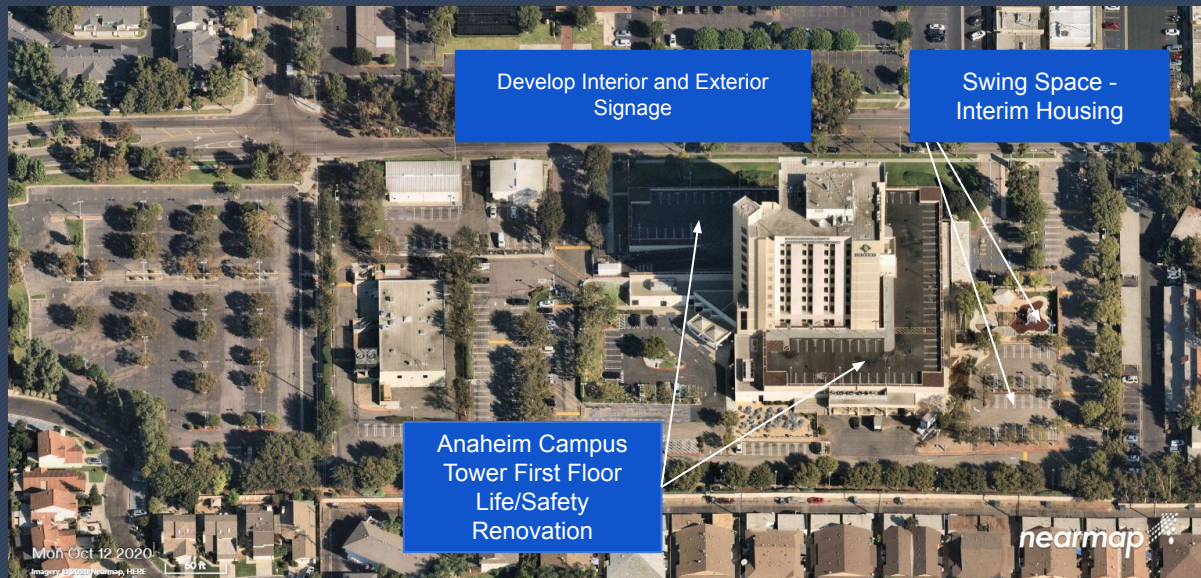




# Questions

# Aerial View - Anaheim Campus

19



## Phase

Design

Construction

Close-Out

# Updates on campus projects - Anaheim Campus

20

## Swing Space / Interim Housing

- 100% Construction Documents are under review by DSA
- Furniture requirements for classrooms and staff are being addressed
- The Design Team received and addressed back-check comments
- Preparations for project bidding underway



# Updates on campus projects - Anaheim Campus

21

## Develop Interior and Exterior Signage

- NOCE completed the internal review and approval of the design standards
- Westberg White submitted a change order for added scope of services inclusive of construction administration for the implementation of design
- The Design Team received comments from NOCE concerning minor revisions to the current design
- Westberg White began the Construction Documents in preparation for submittal to DSA

# Updates on campus projects - Anaheim Campus

22

## Anaheim Campus Tower First Floor Life/Safety Renovation

- Amendment was signed by SVA Architects ahead of bathroom redesign for ADA purposes
- Construction start delayed to allow phased relocation of occupants
- Preliminary documents are under review with CCCCCO



# Questions



## Updates on campus projects - IT Network Refresh

### IT Network Refresh at Cypress, Fullerton, and Anaheim Campuses

- Deployment of WiFi access points at all campuses in progress
- Connectivity verifications to new devices is in progress at Cypress and Fullerton. Activities began in early May at the Anaheim Campus
- Implementation of Voice over IP (VoIP) in the second half of 2022
- Supply chain challenges remain in securing outstanding components for installation and various project locations. For example - backordered clamps are causing delays to mounting Wi-Fi transmitters

# Questions

# Financial Review

26

- Capital Projects Update
- Estimated Project Budgets
- 90-Day Look Ahead Schedule



**Measure J  
Capital Projects Update  
As of April 30, 2022**

**Bond Authorization:**

Bond Authorization	574,000,000	100.00%
Bonds Sold - Series A + B	250,000,000	43.55%
<b>Available Principal Amount of Bonds</b>	<b>324,000,000</b>	<b>56.45%</b>

**Bond Funding Sources (Budget):**

		Actual Received	Remaining Balance
Bond Authorization	574,000,000	250,000,000	324,000,000
Estimated Net Interest Earnings	11,000,000	9,506,140	1,493,860
<b>Totals</b>	<b>585,000,000</b>	<b>259,506,140</b>	<b>325,493,860</b>

**Cost Status:**

Campus	Total Budget	%	Actual Expenses to Date	Rem aining Balance
Anaheim Campus	23,607,800	4.03%	2,673,830	20,933,970
Cypress Campus	225,921,200	38.62%	119,094,787	106,826,413
Fullerton Campus	311,126,400	53.18%	66,945,482	244,180,918
District Expenses				
• Program Management	20,000,000	3.42%	6,947,549	13,052,451
• Bond Issuance Cost	3,544,600	0.61%	1,301,760	2,242,840
• Other Bond Expense	800,000	0.14%	377,452	422,548
<b>Totals</b>	<b>585,000,000</b>	<b>100.00%</b>	<b>197,340,860</b>	<b>387,659,140</b>

## CURRENT PROJECTS

## PROJECT BUDGET/VARIANCE REPORT—CYPRESS

28

CURRENT PROJECTS	Measure J Budget JAN FY 2021-22	Measure J Budget APR FY 2021-22	Variance	Measure J Expenses	Balance
Swing Space Projects	\$ 1,034,003	\$ 1,034,003	\$ -	\$ -	\$ 1,034,003
Swing Space Fine Arts (Old SEM)	\$ 5,626,285	\$ 5,626,285	\$ -	\$ 331,487	\$ 5,294,798
Swing Space Tech I/ Tech III (Old SEM)	\$ -	\$ -	\$ -	\$ -	\$ -
Fine Arts Building Renovation*	\$ 33,413,861	\$ 33,413,861	\$ -	\$ 1,065,893	\$ 32,347,968
Update/Improve Infrastructure	\$ 8,094,406	\$ 8,482,599	\$ 388,193	\$ -	\$ 8,482,599
Update/Improve Infrastructure (IT)	\$ 5,101,587	\$ 5,101,587	\$ -	\$ 1,948,403	\$ 3,153,184
Update/Improve Infrastructure (Under Piazza & Stairwell Restoration)	\$ 3,300,000	\$ 3,300,000	\$ -	\$ -	\$ 3,300,000
Update/Improve Infrastructure (Piazza Above SAC)	\$ 3,000,000	\$ 3,000,000	\$ -	\$ -	\$ 3,000,000
Library-Learning Resource Center Expansion	\$ 5,038,665	\$ 5,038,665	\$ -	\$ 38,665	\$ 5,000,000
Central Plant Upgrade	\$ 7,000,000	\$ 7,000,000	\$ -	\$ -	\$ 7,000,000
Mass Communications & Security Systems Upgrade	\$ 1,942,855	\$ 1,942,855	\$ -	\$ -	\$ 1,942,855
Campus-Wide Security Systems Upgrade	\$ 2,058,670	\$ 1,816,170	\$ (242,500)	\$ 58,670	\$ 1,757,500
Campus-Wide Security Systems Upgrade (Phase 1)	\$ -	\$ 371,367	\$ 371,367	\$ -	\$ 371,367
Pool Restoration and Upgrade	\$ 3,909,470	\$ 3,909,470	\$ -	\$ -	\$ 3,909,470
Tech I/Tech III CTE Complex	\$ 28,337,107	\$ 28,337,107	\$ -	\$ -	\$ 28,337,107
Planning (Non Project Specific)	\$ 544,000	\$ 544,000	\$ -	\$ 499,041	\$ 44,959
Gym I/Gym II Restoration and Restrooms	\$ -	\$ -	\$ -	\$ -	\$ -
Under Piazza & Stairwell Restoration	\$ -	\$ -	\$ -	\$ -	\$ -
Gateway Phase 1	\$ -	\$ -	\$ -	\$ -	\$ -
Athletic Field Realignment/Entry Revisions/Parking Lot Improvements	\$ -	\$ -	\$ -	\$ -	\$ -
<b>COMPLETED PROJECTS</b>					
New Science, Engineering, and Mathematics Building	\$ 94,068,202	2 \$ 94,068,202	\$ -	\$ 93,515,601	\$ 552,601
Update/Improve Infrastructure (New SEM)	\$ 3,055,711	2 \$ 2,805,131	\$ (250,580)	\$ 2,805,131	\$ -
Mass Communications & Security Systems Upgrade (New SEM)	\$ 389,367	2 \$ 389,367	\$ -	\$ 389,367	\$ -
Update/Improve Infrastructure (IT - New SEM)	\$ 645,883	2 \$ 645,883	\$ -	\$ 645,883	\$ -
New Veterans' Resource Center & Student Activities Center Expansion	\$ 13,411,167	2 \$ 13,411,167	\$ -	\$ 12,113,165	\$ 1,298,002
Update/Improve Infrastructure (VRC/SAC)	\$ 1,144,756	2 \$ 1,077,912	\$ (66,844)	\$ 1,077,912	\$ -
Mass Communications & Security Systems Upgrade (VRC/SAC)	\$ 60,938	2 \$ 60,938	\$ -	\$ 60,938	\$ -
Update/Improve Infrastructure (IT - VRC/SAC)	\$ 252,530	2 \$ 181,761	\$ (70,769)	\$ 181,761	\$ -
Veterans' Memorial Bridge and Tribute Garden	\$ 100,800	2 \$ -	\$ (100,800)	\$ -	\$ -
Baseball Field Improvements	\$ 1,932,981	2 \$ 1,905,141	\$ (27,840)	\$ 1,905,141	\$ -
Swing Space - Gym II Renovation	\$ 153,397	1 \$ 124,682	\$ (28,715)	\$ 124,682	\$ -
Swing Space - Parking Lot 5 Expansion	\$ 1,965,399	1 \$ 2,001,369	\$ 35,970	\$ 2,001,369	\$ -
Swing Space - Old SEM (Roofing)	\$ 47,747	1 \$ 76,467	\$ 28,720	\$ 76,467	\$ -
Swing Space - Other	\$ 35,975	1 \$ -	\$ (35,975)	\$ -	\$ -
Update/Improve Infrastructure (Central Plant Enhancements)	\$ 58,768	\$ 58,768	\$ -	\$ 58,768	\$ -
Mass Communications & Security Systems Upgrade (Safety Film)	\$ 145,772	\$ 145,772	\$ -	\$ 145,772	\$ -
Mass Communications & Security Systems Upgrade (Door Replacement)	\$ 50,898	\$ 50,671	\$ (227)	\$ 50,671	\$ -
<b>SUB TOTAL</b>	<b>\$ 225,921,200</b>	<b>\$ 225,921,200</b>	<b>\$ -</b>	<b>\$ 119,094,787</b>	<b>\$ 106,826,413</b>

1. Project Encumbrance Transfer Request is required to reconcile Measure J funding between Swing Space Sub-Projects.

2. Financial close-out is in progress. Contract balances will be transferred to active projects.

\* Denotes projects with additional State funds in budget- Refer to project page on COC Report for additional details



## CURRENT PROJECTS

## PROJECT BUDGET/VARIANCE REPORT—FULLERTON

29

CURRENT PROJECTS	Measure J Budget JAN FY 2021-22	Measure J Budget APR FY 2021-22	Variance	Measure J Expenses	Balance
New Instructional Building	\$ 53,588,031	\$ 53,588,031	\$ -	\$ 50,336,082	\$ 3,251,949
Renovate Buildings 300 *	\$ 20,482,000	\$ 20,482,000	\$ -	\$ 1,216,745	\$ 19,265,255
New M & O Building	\$ 6,758,944	\$ 6,758,944	\$ -	\$ 136,275	\$ 6,622,669
Chapman / Newell Instructional Building	\$ 21,985,777	\$ 21,985,777	\$ -	\$ 384,721	\$ 21,601,056
New Performing Arts Complex—Demolish Buildings 1100 and 1300 *	\$ 30,724,153	<sup>1</sup> \$ 72,615,608	\$ 41,891,455	\$ 1,003,288	\$ 71,612,320
New Welcome Center & Lot C West	\$ 37,353,872	\$ 37,353,872	\$ -	\$ -	\$ 37,353,872
New Horticulture/Lab School/STEM Lab *	\$ 33,813,764	\$ 33,813,764	\$ -	\$ -	\$ 33,813,764
Renovate Building 840 Campus Services	\$ 7,878,400	<sup>1</sup> \$ -	\$ (7,878,400)	\$ -	\$ -
Demolish Building 2000	\$ 1,108,000	\$ 1,108,000	\$ -	\$ -	\$ 1,108,000
New Parking Structure	\$ 11,219,260	\$ 11,219,260	\$ -	\$ -	\$ 11,219,260
Update/Improve Infrastructure	\$ 23,162,352	<sup>2</sup> \$ 20,062,352	\$ (3,100,000)	\$ -	\$ 20,062,352
Update/Improve Infrastructure (IT)	\$ 7,721,018	\$ 7,721,018	\$ -	\$ 3,172,164	\$ 4,548,854
Update/Improve Infrastructure (IT - Instructional Bldg.)	\$ 278,982	\$ 278,982	\$ -	\$ -	\$ 278,982
New Thermal Energy Storage (TES)	\$ 10,139,524	<sup>1</sup> \$ -	\$ (10,139,524)	\$ -	\$ -
Renovate Building 600	\$ 3,117,641	<sup>1</sup> \$ -	\$ (3,117,641)	\$ -	\$ -
Renovate Health Center	\$ 1,328,800	<sup>1</sup> \$ -	\$ (1,328,800)	\$ -	\$ -
Renovate Faculty Lounge & Offices	\$ 6,212,250	<sup>1</sup> \$ -	\$ (6,212,250)	\$ -	\$ -
Renovate Wellness Center	\$ 2,534,400	<sup>1</sup> \$ -	\$ (2,534,400)	\$ -	\$ -
Landscape & Hardscape Improvements	\$ 3,840,000	\$ 3,840,000	\$ -	\$ -	\$ 3,840,000
Renovate Building 3100	\$ 2,402,940	<sup>1</sup> \$ -	\$ (2,402,940)	\$ -	\$ -
Demolish Building 1901-04, 1956-60, 3000	\$ 1,333,000	\$ 1,333,000	\$ -	\$ -	\$ 1,333,000
Parking Lot Improvements at Building 3000	\$ 1,999,500	\$ 1,999,500	\$ -	\$ -	\$ 1,999,500
Renovate Building 2100	\$ 8,277,500	<sup>1</sup> \$ -	\$ (8,277,500)	\$ -	\$ -
Demolish Buildings 2200 & 3104	\$ 1,392,209	\$ 1,392,209	\$ -	\$ -	\$ 1,392,209
Planning (Non Project Specific)	\$ 595,000	\$ 595,000	\$ -	\$ 242,446	\$ 352,554
Wilshire Chiller Plant Relocation	\$ -	\$ 3,100,000	\$ 3,100,000	\$ 242,446	\$ 2,857,554
<b>COMPLETED PROJECTS</b>					
Central Plant Replacement & Expansion	\$ 10,600,000	<sup>2</sup> \$ 10,600,000	\$ -	\$ 9,125,334	\$ 1,474,666
Greenhouse Replacement	\$ 834,381	<sup>2</sup> \$ 834,381	\$ -	\$ 641,279	\$ 193,102
Update/Improve Infrastructure (Bldg 300-500 Sewer Line)	\$ 444,702	\$ 444,702	\$ -	\$ 444,702	\$ -
<b>SUB TOTAL</b>	<b>\$ 311,126,400</b>	<b>\$ 311,126,400</b>	<b>\$ -</b>	<b>\$ 66,945,482</b>	<b>\$ 244,180,918</b>

1.PETR 2022-16 FC merged project Budgets to New Performing Arts Complex- Demolish Buildings 1100-1300

2.PETR 2022-17 FC created project Budget for new Wilshire Chiller Plant Relocation Project out of Update/Improve Infrastructure

3.Financial close-out is in progress. Contract balances will be transferred to active projects.

\* Denotes projects with additional State funds in budget- Refer to project page on COC Report for additional details



## CURRENT PROJECTS

## PROJECT BUDGET/VARIANCE REPORT—ANAHEIM

CURRENT PROJECTS	Measure J Budget JAN FY 2021-22	Measure J Budget APR FY 2021-22	Variance	Measure J Expenses	Balance
Update/improve Infrastructure	\$ 669,290	\$ 669,290	\$ -	\$ -	\$ 669,290
Update/improve Infrastructure (IT)	\$ 1,000,000	\$ 1,000,000	\$ -	\$ 772,680	\$ 227,320
Develop Interior and Exterior Signage	\$ 313,800 <sup>1</sup>	\$ 1,087,431	\$ 773,631	\$ -	\$ 1,087,431
Second Floor Tenant Improvements	\$ 813,000	\$ 813,000	\$ -	\$ -	\$ 813,000
Swing Space Projects/ Interim Housing	\$ 2,000,000	\$ 2,000,000	\$ -	\$ 127,422	\$ 1,872,578
Swing Space Culinary Arts ( Temp. Facility)	\$ -	\$ 2,500,000	\$ 2,500,000	\$ -	\$ 2,500,000
Anaheim Campus Tower First Floor Life/Safety Renovation*	\$ 2,183,000	\$ 2,183,000	\$ -	\$ 42,503	\$ 2,140,497
Upper Deck Enhancements	\$ 309,901	\$ 309,901	\$ -	\$ 24,000	\$ 285,901
1st. Floor Remodel Student Center and Classrooms	\$ 2,352,720	\$ 2,352,720	\$ -	\$ -	\$ 2,352,720
Pedestrian and Vehicular Traffic Flow	\$ 2,329,000	\$ 2,329,000	\$ -	\$ -	\$ 2,329,000
4th Floor Improvements	\$ 218,000	\$ 218,000	\$ -	\$ -	\$ 218,000
Outdoor Patio Remodel	\$ 1,382,500	\$ 1,382,500	\$ -	\$ -	\$ 1,382,500
Develop Drop-Off Plaza at Romneya Drive	\$ 569,000	\$ 569,000	\$ -	\$ -	\$ 569,000
Develop Intersection at Romneya & Coronet	\$ 773,631 <sup>1</sup>	\$ -	\$ (773,631)	\$ -	\$ -
Holding Account	\$ 6,600,000	\$ 4,100,000	\$ (2,500,000)	\$ -	\$ 4,100,000
Planning (Non Project Specific)	\$ 396,208	\$ 396,208	\$ -	\$ 9,475	\$ 386,733
<b>COMPLETED PROJECTS</b>					
Update/Improve Infrastructure (Secondary MDF)	\$ 97,250	\$ 97,250	\$ -	\$ 97,250	\$ (0)
7th and 10th Floors Buildout	\$ 959,764	\$ 959,764	\$ -	\$ 959,764	\$ (0)
5th Floor CTE & 2nd Floor Room 215	\$ 640,736	\$ 640,736	\$ -	\$ 640,736	\$ -
<b>SUB TOTAL</b>	<b>\$ 23,607,800</b>	<b>\$ 23,607,800</b>	<b>\$ -</b>	<b>\$ 2,673,830</b>	<b>\$ 20,933,970</b>

1. PETR 2022-16 AC augmented Budget for Develop Interior and Exterior Signage out of Develop Intersection at Romneya & Coronet due to 3/4/22 Cash Flow Projections  
 2. PETR 2022-18 AC created Budget for a new Project Swing Space -Cypress Culinary Arts (Temporary Facility) Project out of Holding Account Project

\* Denotes projects with additional State funds in budget- Refer to project page on COC Report for additional details

## PROJECT BUDGET/VARIANCE REPORT—DISTRICT

DISTRICT WDE EXPENSE	Measure J Budget JAN FY 2021-22	Measure J Budget APR FY 2021-22	Variance	Measure J Expenses	Balance
Program Management Fees	\$ 20,000,000	\$ 20,000,000	\$ -	\$ 6,947,549	\$ 13,052,451
Bond Issuance Cost	\$ 3,544,600	\$ 3,544,600	\$ -	\$ 1,301,760	\$ 2,242,840
Other	\$ 800,000	\$ 800,000	\$ -	\$ 377,452	\$ 422,548
<b>SUB TOTAL</b>	<b>\$ 24,344,600</b>	<b>\$ 24,344,600</b>	<b>\$ -</b>	<b>\$ 8,626,761</b>	<b>\$ 15,717,839</b>



## CYPRESS - FULLERTON - ANAHEIM (NOCE)

MAAS

## 90-DAY LOOK AHEAD SCHEDULE

(06-01-22 TO 08-31-22)

	June				July				August					Comments
	7	14	21	28	5	12	19	26	2	9	16	23	30	
<b>GENERAL</b>														
NOCCCD Board Meetings														June 14th, June 28th, July 26th, August 9th, and August 23rd
COC Meetings														June 1st (In Person Meeting at Cypress College)
Bond Program Management Team Mtgs.														June 21st, July 19th, and August 16th (meeting held via Zoom)
<b>PLANNING</b>														
<b>ANAHEIM</b>														
<b>CYPRESS</b>														
Central Plants Upgrades														In Progress
<b>DESIGN PHASE</b>														
<b>ANAHEIM</b>														
Anaheim Campus Tower First Floor Life/Safety Renovation														
Construction Documents														Pending Preliminary Plans Approval From CCCCCO
Develop Interior and Exterior Signage														
Construction Documents														In progress
Swing Space - Culinary Art (Temp.)														
Schematic Design														In Progress - Anticipate to complete June 15th
Construction Documents														Upcoming - June 16th
<b>FULLERTON</b>														
New Performing Arts Complex														
Construction Documents														In Progress
New M&O Building														
Design Development														In Progress
Construction Documents														Upcoming - August 22nd
Chapman/Newell Instructional Building														
Design Development														In Progress
Construction Documents														Upcoming - August 22nd
<b>DSA PHASE &amp; AGENCY REVIEW</b>														
<b>ANAHEIM</b>														
Swing Space - Interim Housing														In Progress
Develop Interior and Exterior Signage														Upcoming Mid June
<b>CYPRESS</b>														
Fine Arts Building Renovation														In Progress
<b>FULLERTON</b>														
New Performing Arts Complex														Upcoming - August 16th

32

This schedule is an updated version from the one available at report printing date.





## NORTH ORANGE COUNTY COMMUNITY COLLEGE DISTRICT

## CYPRESS - FULLERTON - ANAHEIM (NOCE)

## 90-DAY LOOK AHEAD SCHEDULE

(06-01-22 TO 08-31-22)



33

	June				July				August					Comments
	7	14	21	28	5	12	19	26	2	9	16	23	30	
<b>BIDDING</b>														
<b>ANAHEIM</b>														
Swing Space Interim Housing														Upcoming - July 18th
<b>CYPRESS</b>														
Swing Space - Fine Arts														In Progress
<b>FULLERTON</b>														
Renovate Building 300														In Progress - For non DSA scope of work
New Architect Of Record Selection														In Progress - Anticipate to complete June 17th
<b>PRE-CONSTRUCTION PHASE</b>														
<b>CONSTRUCTION PHASE</b>														
<b>CYPRESS</b>														
Campus wide security systems upgrades														
Procurement / Installation														In Progress
<b>NETWORK REFRESH</b>														
<b>FULLERTON</b>														
Wireless Patching														Patching of wireless network
Indoor - Wireless activation (no SVI)														Indoor activation of wireless network with no Switched Virtual Interface (SVI)
Outdoor - Wireless installs (Phase 1)														Outdoor installation of wireless network
<b>CLOSE-OUT PHASE</b>														
<b>CYPRESS</b>														
New SEM														In Progress
<b>FULLERTON</b>														
New Instructional Building														Completed - Ribbon Cutting May 13th

\* Non-Measure J expenditure activities

This schedule is an updated version from the one available at report printing date.

# Thank you!

Next Meeting: September 7, 2022  
Fullerton College