



September 2022

CAPITAL PROJECTS REPORT to the

Citizens' Oversight Committee

MAAS

Intentionally Left Blank

TABLE OF CONTENTS

Active Project Status Report

Cypress Campus

Campus Aerial View	2
Fine Arts Building Renovation	3
Swing Space—Fine Arts (Old SEM)	4
Electrical Vehicles (EV) SCE Charging Stations-Lot 4	5
Campus-Wide Security Systems Upgrade	6
Update/Improve Infrastructure	7
Mass Communications & Security Systems Upgrade	8
Updates on Campus Projects - Cypress College	9-13

Fullerton Campus

Campus Aerial View	14
Renovate Buildings 300	15
New Maintenance & Operation Building	16
Chapman / Newell Instructional Building	17
New Performing Arts Complex - Demolish Buildings 1100 and 1300	18
Wilshire Chiller Plant Relocation	19
Update / Improve Infrastructure	20
Updates on Campus Projects - Fullerton College	21-25

NOCE - Anaheim Campus

Campus Aerial View	26
Swing Space Project / Interim Housing	27
Swing Space Project / Culinary Arts	28
Develop Interior And Exterior Signage	29
Anaheim Campus Tower First Floor Life/Safety Renovation	30
Update / Improve Infrastructure	31
Updates on Campus Projects - Anaheim Campus	32-35

Completed Projects

Cypress Campus	37-40
Fullerton Campus	41-42
NOCE - Anaheim Campus & District Offices	43-44

Financial Review

<i>Capital Project Updates - Measure J</i>	46
Estimated Project Budgets & Purchase Orders Over \$10,000	47-54
Cypress Campus	47-48
Fullerton Campus	49-50
NOCE - Anaheim Campus	51-52
District	53-54
90-Day Look Ahead Schedule	55-56

Active Project Status Report

Campus Projects

- Cypress
- Fullerton
- Anaheim and District Offices

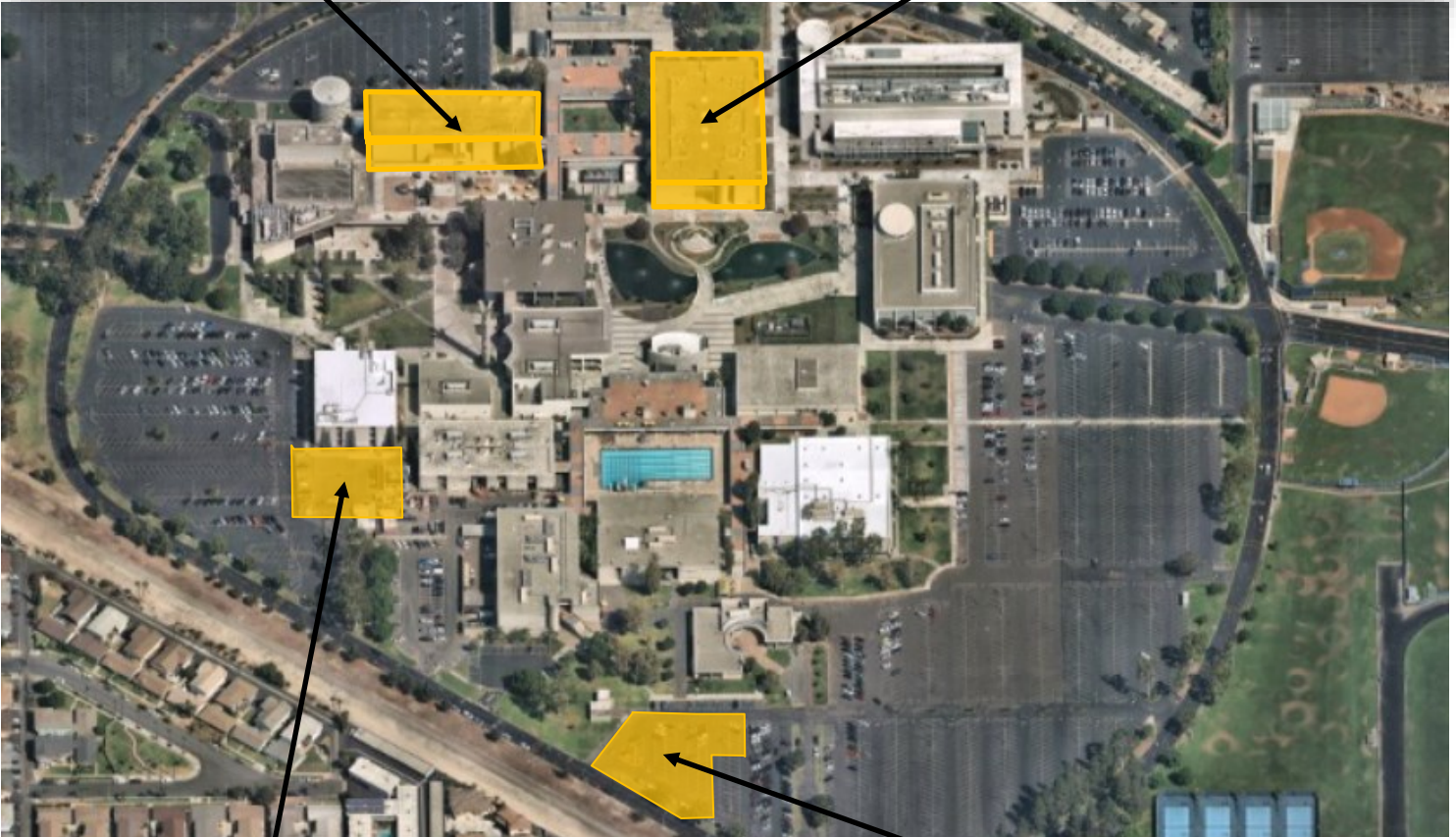


AERIAL VIEW — CYPRESS CAMPUS PROJECTS



Fine Arts Building Renovation
[Bidding]

Swing Space - Fine Arts (Old SEM)
[Construction]



Swing Space Project—Culinary Arts

[Design - Construction Documents]

*See page 26 for more details

- ▶ IT Network Refresh (Throughout Campus)
[Implementation]
- ▶ Campus-Wide Security Systems Upgrade
[Planning]



Electrical Vehicles (EV) SCE Charging
Stations-Lot 4

[Design - Construction Documents]



PROJECT STATUS REPORT — CYPRESS CAMPUS

FINE ARTS BUILDING RENOVATION BIDDING

Address	9200 Valley View St. Cypress, CA 90630
Project Manager	Allison Coburn Cypress College
Architect	DLR Group
Construction	Sundt Construction, Inc.
Project Square	66,765 GSF
DSA Application A#	04-120539



Project Overview

The project involves the renovation of the existing 36,804 ASF in the Fine Arts Building #2. Currently, related instructional programs are dispersed throughout the Campus. Renovations will encompass functional and adequate recording arts, rehearsal and performance spaces for music instruction, spaces for student study near departmental faculty and other resources, and the reuse of existing vacant spaces currently not configured for instruction. Noise intrusion between spaces will be mitigated to minimize disruptions to instruction and music practice, and new instructional technology will be installed to support current instructional methodologies and pedagogies. The scope also replaces the existing mechanical, electrical, and plumbing systems and allocates sufficient square footages for code compliant bathrooms. Allocation of funds by the Department of Finance was obtained to address seismic upgrades to comply with DSA requirements.

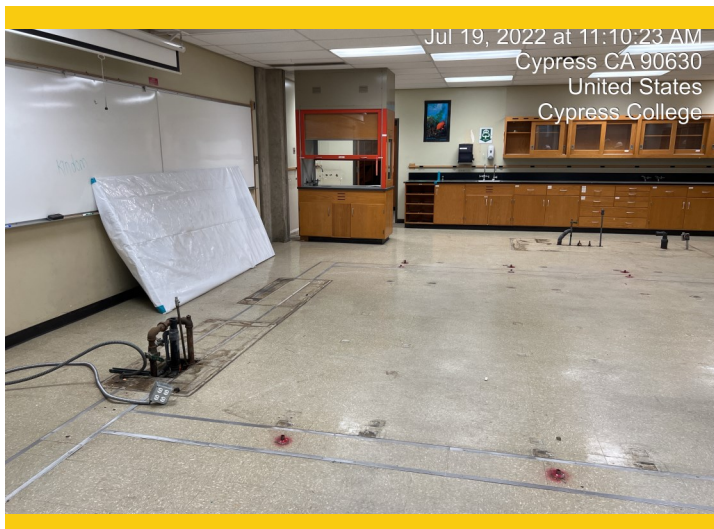
- Preliminary Total Project Budget..... \$53,256,861
- Funding Source Measure J & State Capital Outlay
 - Measure J \$33,413,861
 - State Capital Outlay Funds \$19,843,000
- Estimated Construction Start..... February 2023
- Targeted Completion Spring 2025



PROJECT STATUS REPORT — CYPRESS CAMPUS

SWING SPACE - FINE ARTS (OLD SEM) CONSTRUCTION

Address	9200 Valley View St. Cypress, CA 90630
Project Manager	Allison Coburn Cypress College
Architect	DLR Group
Project Delivery Method	Design-Bid-Build
General Contractor	New Dynasty Construction Co.
DSA Application A#	04-120540



Project Overview

The existing 1972, 3-story, 100,681 square foot of the former Science Engineering and Mathematics (old SEM) building will be utilized to temporarily house the Fine Arts programs while the Fine Arts Building undergoes renovation. To accommodate the fine arts programs, minor renovations will be required including, but not limited to, demolition of casework, sinks, plumbing, flooring, and accessibility restroom upgrades. Only a portion of the gross square footage (GSF) is undergoing renovation.

- Project Budget \$5,626,285
- Funding Source Measure J
- Project Square Footage..... 100,681 GSF
- Estimated Construction Start..... July 2022
- Targeted Completion January 2023



PROJECT STATUS REPORT — CYPRESS CAMPUS

ELECTRICAL VEHICLES (EV) SCE CHARGING STATIONS-LOT 4 DESIGN—CONSTRUCTION DOCUMENTS

Address	9200 Valley View St. Cypress, CA 90630
Project Manager	Phil Fleming Cypress College
Architect	Southern California Edison
Project Delivery Method	Turn-key



Project Overview

In coordination with Southern California Edison (SCE) 60 electric vehicle charging stations will be installed at parking lot 4, in the vicinity of the North Orange Continuing Education (NOCE) Building.

- Project Budget \$492,000
- Funding Source Measure J
- Architect/Engineer of Record Southern California Edison
- Estimated Construction Start..... Winter 2022
- Targeted Completion Summer 2023



PROJECT STATUS REPORT — CYPRESS CAMPUS

CAMPUS-WIDE SECURITY SYSTEMS UPGRADE PROCUREMENT

Address 9200 Valley View St.
Cypress, CA 90630

Project Manager Allison Coburn
Cypress College

Project Delivery Method Professional Services Contracting



Project Overview

Assessment of the Campus security system and development of security system standards. Considerations for design solutions are underway. Construction and implementation are initially estimated at \$1.7M.

- Project Budget \$2,187,537
 - Phase 1 \$371,367
 - Remaining Phases \$1,816,170
- Funding Source Measure J
- Architect/Engineer of Record Guidepost Solutions, LLC.
- Estimated Construction Start..... June 2021
- Targeted Completion December 2023



PROJECT STATUS REPORT — CYPRESS CAMPUS

UPDATE/IMPROVE INFRASTRUCTURE

VARIOUS STAGES

Address	9200 Valley View St. Cypress, CA 90630	Total Project Budget	\$24,653,641 (Measure J)
		Total Budget Allocated	\$16,171,042 (Measure J)
Number of Projects	8	Funding Source	Measure J & Capital Outlay

General Overview

Projects to address infrastructure improvements or upgrades throughout the Campus. Funds are allocated to projects as needs are identified.

IT Network Refresh Project Overview

IMPLEMENTATION

Assessment of Campus data network infrastructure to identify necessary upgrades and changes that will enable supporting future Campus needs; specifically addressing wired, wireless, voice, and video networks. The scope includes replacing network core switches, providing a more responsive support structure, preparing for cloud computing, and adaptation of Voice over Internet Protocol (VoIP) systems across the District.

- Project Budget \$10,159,710
 - Current Implementation (Measure J) \$1,972,462
 - Current Implementation (Capital Outlay) \$5,058,123
 - Upcoming Phases (Measure J) \$3,129,125
- Funding Source Measure J & Capital Outlay Funds
- Project Delivery Method California Multiple Award Schedule (CMAS)
- Design Implementation..... VectorUSA
- Architect..... Shandam Consulting
- Project Management District IS / PlanNet Consulting
- Design Implementation Start..... November 2019
- Targeted Completion January 2023



PROJECT STATUS REPORT — CYPRESS CAMPUS

MASS COMMUNICATION & SECURITY SYSTEMS UPGRADE

VARIOUS STAGES

Address	9200 Valley View St. Cypress, CA 90630	Total Project Budget	\$2,589,603
		Total Budget Allocated	\$646,748
Number of Projects	4	Funding Source	Measure J

General Overview

Projects to address fire alarm, mass communication, security, access control, and lockdown systems throughout the Campus. Funds are allocated to projects as needs are identified. Two projects have been completed to date related to door replacements and safety film installation.



PROJECT STATUS REPORT — CYPRESS CAMPUS

UPDATES ON CAMPUS PROJECTS - CYPRESS COLLEGE

Fine Arts Building Renovation

- The Design Team worked through the DSA review comments and submitted responses to the State agency in a series of back-check appointments from early to mid-July. Approval to proceed with construction was received on August 10, 2022.
- HL Construction Management (HLCM), DLR Group's estimator, provided the Campus Project Team with a revised cost estimate for construction based on the DSA-approved documents. A series of reconciliation meetings began in late August and early September between HLCM and the project's construction Manager, Sundt. The Campus Project Team is preparing a submittal of documents to the California Community Colleges Chancellor's Office (CCCCO) for approval of funds to the construction phase by mid-September.
- The Campus Project Team submitted the final process of prequalification for trade contractors to the Board of Trustees (BOT) for approval on July 26, 2022. The Board approved the process at the July meeting. The prequalification process created a list of vetted trade contractors able to participate in the bidding of the different scopes of work as part of the renovation project. Following the Board's approval, the questionnaire was published on August 22, 2022 for respondents to submit their responses by September 9, 2022. Submittals will be reviewed for four weeks before the publishing of the final list of prequalified trade contractors in late August. Bidding will in turn open for the group of prequalified trade contractors in October 2022.



Fine Arts Renovation—Foyer Rendering by DLR Group

- An estimate of probable cost prepared by Sundt was submitted to the Campus Project Team. This estimate will guide the trade contractor's experience qualification during the prequalification process. A series of reconciliation meetings have been completed with DLR and the Campus Project Team during August 2022.
- Preparations for the release of trade contractor pre-qualification continued with the posting of the invitation to interested companies in the Orange County Register.

PROJECT STATUS REPORT — CYPRESS CAMPUS

UPDATES ON CAMPUS PROJECTS - CYPRESS COLLEGE (Continued)

Swing Space - Fine Arts (Old SEM)

- Bidders submitted proposals for the adaptation and remodeling of swing space facilities at the Old SEM building in preparation for the Fine Arts Building Renovation. Four firms submitted bids ranging from \$2M to \$2.3M. The lowest responsible and responsive bidder was New Dynasty Construction Co. A request to enter into a contract was approved by the Board on June 14 and a Notice to Proceed (NTP) construction was issued in early July 2022.
- The Campus Project Team and Sundt held a project construction kick-off meeting on June 28 with New Dynasty Construction, following the issuance of the NTP with the renovations to the Old SEM Building as part of the temporary facilities to be used by the current occupants of the Fine Arts Building. This was followed by a pre-construction meeting that was held two days later with New Dynasty Construction, the construction manager, Sundt Construction; Inspector of Record (IOR), Stephen Payte; and the Campus Project Team to set procedures and expectations for the construction process at the Swing Space for the Fine Arts Building users. Approval from the Southern California Air Quality Management District (SCAQMD) was received in the second half of July ahead of the building's abatement of hazardous materials including lead and asbestos.
- Demolition activities began on July 11. Activities progressed on the third-floor classrooms and second-floor restrooms. The abatement of hazardous materials such as asbestos and lead on the second floor began in the last week of July with work proceeding to the first and third floors by the first week of August.
- By the end of August, demolition and abatement activities neared completion on the third and second floors of the structure. The demolition of existing electrical conduits, points of connection, and lighting was anticipated to conclude by the last week of August. The framing of new walls with metal studs and components took place concurrently in spaces fully prepared for construction. On the first floor,



Swing Space—Fine Arts—Demolition in Progress

PROJECT STATUS REPORT — CYPRESS CAMPUS

UPDATES ON CAMPUS PROJECTS - CYPRESS COLLEGE (Continued)

abatement of hazardous materials neared completion at the end of August. The framing of the new walls is scheduled to start in the last week of the month.

- Also in August, New Dynasty Construction turned-in submittals of materials and components to DLR Group for review and approval to use in the project. Two items with long lead times were identified. The teams reviewed strategies to mitigate delays in project completion based on the availability and delivery of such components.
- Construction activities continued without major issues. The General Contractor identified additional scope of work not delineated in the Construction Documents (CDs). Construction field instructions were issued to address the needs for these spaces and costs that will be covered with established project allowances. Challenges had been identified in capping existing utilities and laboratory supply lines due to accessibility issues and the need for limited demolition. Solutions are under development. The Design Team and Construction Manager have approved submittals for items with long lead times, like electrical panels, which have been ordered in expectation of delivery on time for installation. Project substantial completion is targeted for the end of December 2022.

EV SCE Charging Stations – Lot 4

- Southern California Edison (SCE) and Brytemove Energy completed the schematic design and initial CDs for the installation of the charging stations and supporting equipment. In the coming month, the finalized CDs will be submitted to DSA for review and approval for construction.

Campus-Wide Security Systems Upgrade (Phase 1)

- The Campus Project Team processed the two purchase orders for the first phase of this project and was awaiting one final quote for the monitoring station to finalize the procurement portion for the initial stage. The software implementation will occur in mid to late fall once the new server equipment arrives on-site and is installed.
- All components for the first phase of the project have been procured and are awaiting delivery to the site for installation. The Campus Project Team has scheduled the installation of the Video Storage on September 6, followed by milestone Software installation and training the week of September 12. Staff training will follow in the subsequent weeks.



PROJECT STATUS REPORT — CYPRESS CAMPUS

UPDATES ON CAMPUS PROJECTS - CYPRESS COLLEGE (Continued)

Update / Improve Infrastructure

IT Network Refresh Project

- The wireless internet rollout at Cypress College was placed on pause pending the delivery of additional equipment and minor design changes on the implementation of the access points. Approximately 100 wireless access points and mounting brackets were back-ordered and pending delivery to the sites for installation. The team completed the installation by the end of May. Until their installation was possible, the implementation team focused instead on the computing core switch to improve connectivity speeds at the Campuses to enhance the bandwidth to allow a greater number of users at high speeds.
- VoIP phones were successfully deployed with full functionality at Cypress College.
- District IS and VectorUSA have been evaluating missing items identified during execution in the current implementation phase. These items are targeted to enhance the performance and safety of networks at the Campuses. The cost and timeline for the inclusion of these items in the current scope of work will be discussed in the upcoming months.
- The Campus Project Teams worked with VectorUSA on the development of use case scenarios for wireless internet users at all locations. In parallel, a testing plan for each case scenario is under development.
- District IS and VectorUSA reviewed data on payments completed to date to execute an expense transfer for equipment pieces purchased by Capital Outlay funds and transfer of these expenses to the established Bond fund budgets. The teams have identified entries, line by line, based on the detail available in every monthly billing. The journal reallocating expenditures approximately totaled \$5 million in aggregate and excludes labor, software, and license costs.
- In July, District IS and VectorUSA evaluated missing items identified during execution in the current implementation phase. These items were targeted to enhance the performance and safety of networks at the Campuses. The cost and timeline for the inclusion of these items in the current scope of work will be discussed in the upcoming months.



PROJECT STATUS REPORT — CYPRESS CAMPUS

UPDATES ON CAMPUS PROJECTS - CYPRESS COLLEGE (Continued)

- The Campus Project Teams worked with VectorUSA on the development of use case scenarios for wireless internet users at all locations. In parallel, a testing plan for each case scenario is under development.
- In August, VectorUSA encountered setbacks in scheduling the roll-out of the VoIP phones at the remaining sites. In collaboration with Campus Facilities and Academic Computing, VectorUSA is developing solutions to these challenges and are moving forward with WIFI Installation as well as the development of use cases for each role for internet access.
- District IS refined a list of items of needed supplemental small projects that are not in the scope of the current project to be addressed in the upcoming year by teams at each Campus.



AERIAL VIEW — FULLERTON CAMPUS PROJECTS

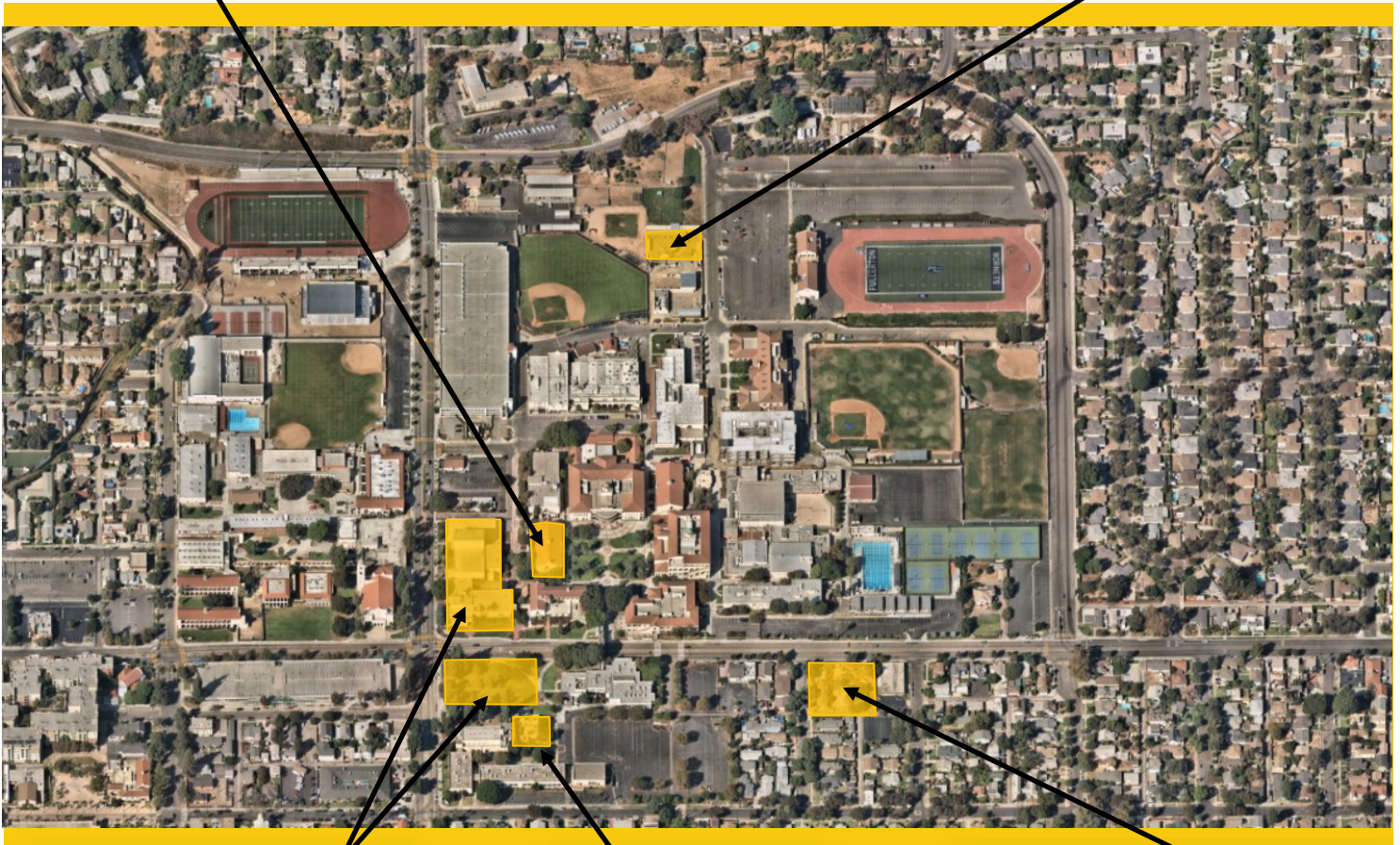


Renovate Building 300
[Design - Schematic Design]

- IT Network Refresh
(Throughout Campus)
[Implementation]



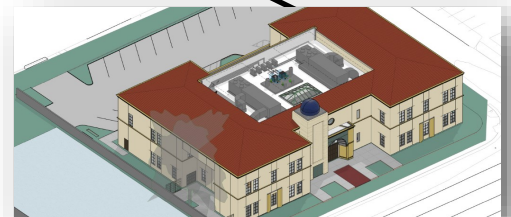
New Maintenance & Operations Building
[Design - Construction Documents]



New Performing Arts Complex - Demolish
Buildings 1100 and 1300
[Design - Construction Documents]



Wilshire Chiller Plant Relocation
[Design—Construction Documents]



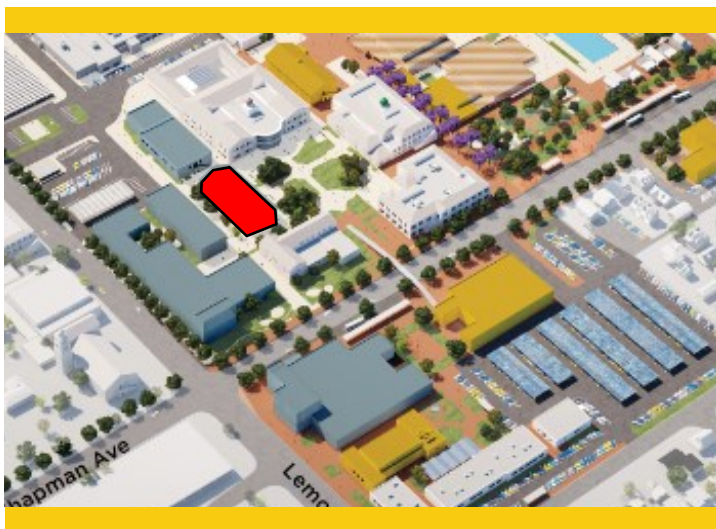
Chapman / Newell Instructional Building
[Design - Construction Documents]



PROJECT STATUS REPORT — FULLERTON CAMPUS

RENOVATE BUILDING 300 DESIGN—SCHEMATIC DESIGN

Address	321 E. Chapman Ave. Fullerton, CA 92832
Project Manager	Oscar Saghieh Fullerton College
Architect	Westberg White
General Contractor	TBD
Project Delivery Method	Design-Bid-Build
DSA Application A#	04-118314, 04-118314



Project Overview

Total renovation of Building 300, including seismic enhancements and historic consideration of Building 300. The renovated building will contain general classrooms, dean and faculty offices, and shared laboratories.

- Total Project Budget\$35,946,675
- Funding SourceMeasure J & State Capital Outlay
 - Measure J\$20,482,000
 - State Capital Outlay Funds\$15,464,675
- Project Gross Square Footage.....22,705 GSF
- Estimated Construction Start.....October 2023
- Targeted CompletionFall 2024



PROJECT STATUS REPORT — FULLERTON CAMPUS

NEW MAINTENANCE & OPERATION BUILDING DESIGN - CONSTRUCTION DOCUMENTS

Address	321 E. Chapman Ave. Fullerton, CA 92832
Project Manager	Oscar Saghie Fullerton College
Design-BUILDER	BN Builders, Inc. & Roesling Nakamura Terada Architects, Inc.
Project Delivery Method	Progressive Design- Build
Project Gross Square Footage	14,723 GSF
DSA Application A#	TBD



Project Overview

The New Maintenance and Operations (M&O) Building will centralize all services into a single building located on the Main Campus. The building will include trade-specific workshops for maintenance, grounds, facilities, and custodial personnel while improving response time and efficiencies by locating the building on the Main Campus adjacent to the central plant.

- Total Project Budget\$14,758,944
- Funding SourceMeasure J & Local Funds
 - Measure J\$6,758,944
 - Local Funds.....\$8,000,000
- Estimated Construction Start.....July 2023
- Targeted CompletionFall 2024



PROJECT STATUS REPORT — FULLERTON CAMPUS

CHAPMAN / NEWELL INSTRUCTIONAL BUILDING DESIGN - CONSTRUCTION DOCUMENTS

Address	321 E. Chapman Ave. Fullerton, CA 92832
Project Manager	Oscar Saghie Fullerton College
Design-BUILDER	BN Builders, Inc. & Roesling Nakamura Terada Architects, Inc.
Project Delivery Method	Progressive Design-Build
Project Gross Square Footage	23,192 GSF
DSA Application A#	TBD



Project Overview

The building at the intersections of Chapman Avenue and Newell Street will house the Campus Veterans' Resource Center, Student Wellness Center (both medical and behavioral health), the Campus Food Bank, Umoja Community Program, Extended Opportunity Programs and Services (EOPS), CalWORKS, Cooperative Agencies Resources for Education (CARE)/Foster Youth Success Initiative (FYSI), a Multi-Cultural Center, and 2 instructional classrooms. In addition, there will be support functions including shared community storage, a department-wide copy and breakroom as well as a lactation room.

- Total Project Budget\$21,985,777
- Funding SourceMeasure J & Local Funds
 - Measure J\$21,985,777
- Estimated Construction Start.....July 2023
- Targeted CompletionFall 2024



PROJECT STATUS REPORT — FULLERTON CAMPUS

NEW PERFORMING ARTS COMPLEX - DEMOLISH BUILDINGS 1100 AND 1300

DESIGN - CONSTRUCTION DOCUMENTS

Address 321 E. Chapman Ave.
Fullerton, CA 92832

Project Manager Oscar Saghieh
Fullerton College

Architect Pfeiffer Partners
Architects, Inc.

Project Delivery Method Design-Bid-Build



Project Overview

This project addresses the demand for enrollments in the performing arts programs by constructing a new complex bringing music, drama, theater arts, and communication programs together into a single facility. The new building replaces outdated facilities with electrical deficiencies and outmoded configurations. The new structure will take advantage of the potential use of commonly required spaces to improve overall utilization and flexible spaces that help programs in meeting higher demands anticipated in the near future. As this project is integral to the Campus master plan and changes in scope can jeopardize the availability of matching State funds for the project, assessments are underway for the increase of Measure J funding. Transfers of funds will be completed from lower-priority projects at the Campus. Refer to Updates on Campus Project pages ahead for more details.

- Preliminary Total Project Budget \$113,809,608
- Expected Total Project Budget Increase to \$119,336,120
- Funding Source..... Measure J & State Capital Outlay
 - Measure J \$72,615,608
 - State Capital Outlay Funds \$41,009,000
 - Local Funds..... \$185,000
- Project Gross Square Footage 66,765 GSF
- Estimated Construction Start September 2023
- Targeted Completion Fall 2025



PROJECT STATUS REPORT — FULLERTON CAMPUS

WILSHIRE CHILLER PLANT RELOCATION DESIGN—CONSTRUCTION DOCUMENTS

Address	321 E. Chapman Ave. Fullerton, CA 92832
Project Manager	Oscar Saghie Fullerton College
Architect of Record	Pfeiffer Partners Architects, Inc.
General Contractor	TBD
Project Delivery	Design-Bid-Build
Project Gross Square Footage	TBD
DSA Application A#	TBD



Project Overview

Due to its location in the footprint of the future Performing Arts Complex, the demolition and relocation of the existing Chiller Plant and service yard are necessary as a first phase of the project. The current facilities deliver temperature control to the buildings in the vicinity, such as the Wilshire Center. The new facility will provide the same service to the current buildings in addition to the new Performing Arts Complex. The relocation of the infrastructure will be carried in coordination with the local utility, Southern California Edison (SCE).

- Total Project Budget (Est.)\$3,100,000
- Funding SourceMeasure J
- Estimated Construction Start.....March 2023
- Targeted CompletionSeptember 2023



PROJECT STATUS REPORT — FULLERTON CAMPUS

UPDATE/IMPROVE INFRASTRUCTURE

VARIOUS STAGES

Address	321 E. Chapman Ave. Fullerton, CA 92832	Total Project Budget	\$28,507,054 (Measure J)
		Total Budget Allocated	\$8,444,702 (Measure J)
Number of Projects	3	Funding Source	Measure J & Capital Outlay

General Overview

Projects to address infrastructure improvements or upgrades throughout the Campus. Funds are allocated to projects as needs are identified.

IT Network Refresh Project Overview

IMPLEMENTATION

Assessment of Campus data network infrastructure to identify necessary upgrades, and changes that will enable supporting future Campus needs; specifically addressing wired, wireless, voice, and video networks. The scope includes replacing network core switches, providing a more responsive support structure, preparing for cloud computing, and adaptation of Voice over Internet Protocol (VoIP) systems across the District.

- Project Budget \$13,675,083
 - Current Implementation (Measure J) \$3,132,039
 - Current Implementation (Capital Outlay) \$5,954,065
 - Upcoming Phases (Measure J) \$4,588,979
- Funding Source Measure J & Capital Outlay Funds
- Project Delivery Method California Multiple Award Schedule (CMAS)
- Design Implementation..... VectorUSA
- Architect..... Shandam Consulting
- Project Management District IS / PlanNet Consulting
- Design Implementation Start..... November 2019
- Targeted Completion January 2023



PROJECT STATUS REPORT — FULLERTON CAMPUS

UPDATES ON CAMPUS PROJECTS - FULLERTON COLLEGE

Renovate Building 300

- Westberg White Architects was selected as the new Architect of Record (AOR) following interviews with architectural firms that submitted proposals to take on the completion of the design for the renovation of Building 300. Upon release of a Notice to Proceed (NTP) the firm released a schedule for the remainder of the scope of work and a plan of action to start the first phase of construction by November 2023.
- Westberg White met with DSA and the Campus Project Team on the design of seismic enhancements to Building 300. During the session, DSA committed to the timely review of the final CDs to allow for the adherence to the current schedule of construction and allow the start of an initial phase in November 2023. Follow-up items for the AOR included a new Evaluation and Design Criteria Report (EDCR) as a result of the change in the seismic rehabilitation scope of work.
- Development of the EDCR was undertaken in June and submitted to DSA on August 4, 2022. The AOR submitted this document to DSA by the end of June alongside a revised project schedule. A list of proposed hazardous material testing locations was identified by the AOR. The final list of locations will be approved by DSA, alongside the greenlight for the EDCR.
- A meeting was held with Fullerton Heritage in early August to review the recent seismic scope revisions under design for the project. This opportunity was also used to introduce the new architectural team to the work group and reiterate the project team's commitment to continue work in preserving the historical fabric of the building. In the upcoming weeks, the Campus Project Team will be conducting a meeting with CCCC for a preparatory submittal for the upcoming first installment of Design Documents (DDs), to the entity for review and further authorization of funding. This step intends to expedite the review and approval process to ensure the project keeps its milestone calendar leading to construction start in November 2023.
- A detailed schedule for design milestones was created by the AOR. The Design Team anticipates a submittal of CDs to the State



New M&O Rendering West Exterior Rendering

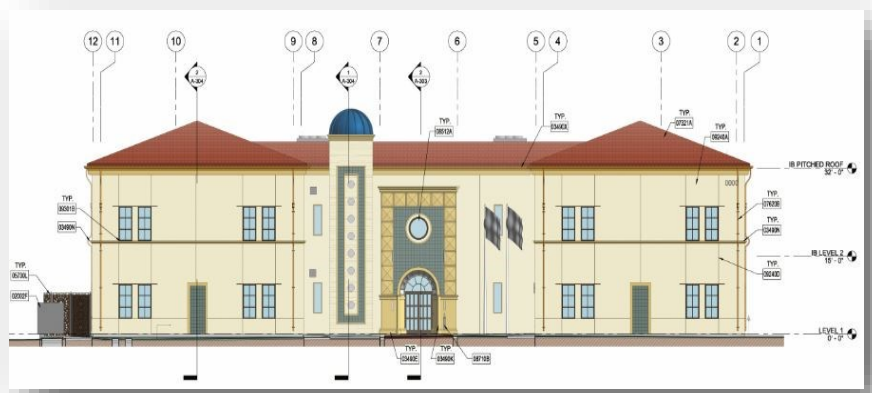
PROJECT STATUS REPORT — FULLERTON CAMPUS

UPDATES ON CAMPUS PROJECTS - FULLERTON COLLEGE (Continued)

agency in the first week of February 2023. Approval will be potentially available by the first week of May 2023.

Chapman / Newell Instructional Building and New Maintenance & Operations Building

- The Campus Project Team received the final set of drawings corresponding to the Design Development phase on June 15. Value engineering of different building components will continue into the CDs phase of design. So far, approximately \$1.5M has been realized in savings for the two buildings.
- The Campus Project Team was anticipating an estimate of probable cost at the completion of the 100% DDs from BN Builders and RNT Architects. RNT Architects submitted the documents for Campus review on June 15th, and BN Builders completed their next estimate on construction costs at this stage of design by July 22nd. Following review by the Campus Project Team, one round of reconciliation occurred with O'Connor CM for two weeks into early August. A final reconciliation of costs for construction is not expected to take place until the Guaranteed Maximum Price (GMP) negotiations.



New Chapman / Newell Instructional North Exterior Rendering

New Performing Arts Complex

- All sample collections of hazardous materials such as lead and asbestos were completed at building 1300. The sample collection at building 1100 wrapped up the last week of June. The completed reports were made available by early July and followed by specifications the week after.
- Pfeiffer Partners Architects submitted the 50% CDs drawings and specifications for the review of the Building User Group (BUG) and Campus Project Team on June 21st. The completed 100% CDs are due in November 2022 for submission to DSA.

PROJECT STATUS REPORT — FULLERTON CAMPUS

UPDATES ON CAMPUS PROJECTS - FULLERTON COLLEGE (Continued)

- A preliminary submittal meeting occurred with DSA on June 23rd to finetune details and requirements for the 100% CDs. Stemming from this meeting, conversations were held with the BUG on catwalk access for students and the need for a wheelchair lift at these locations. Design revisions were carried out in the following weeks after the issue was identified.
- Pfeiffer held review meetings in June with the different Building User Groups (BUG) to finalize layouts for offices, labs, studios, classrooms, halls, and special-use rooms. Reviews on the audio-visual equipment, IT equipment and requirements, security, hardware and maintenance and operations were also carried out. Lastly, meetings were held to finalize the interior finishes throughout the new complex. Feedback from these sessions was incorporated into the final CDs. It was completed in late summer of 2022. The Design Team provided a preliminary scene shop layout for review by the BUG inclusive of equipment arrangements. Verifications were carried out with DSA for confirmation of requirements for seismic anchoring of the different components in this space. Building Information Modeling (BIM) clash detection was carried out to mitigate conflicts and delays during construction by using these 3D digital models of the building design.
- The Design Team completed several revisions to the design along the western and southern facades of the new building based on suggestions from the historic architect. The revision was inclusive of a complete redesign of the interface of the New Performing Arts Complex with the Wilshire Auditorium.
- The Design Team and Campus Project Team extended the timeline for the completion of CDs to November 2022. Concurrence was received from the CCCC for the additional six months in completion of the CDs. The complexities of specialized construction and detailing for acoustic and theatrical requirements were addressed. Simultaneously, the added time will help the Design Team to separate the different phases of the building's construction such as the Wilshire Chiller Plant Relocation and Parking Lot 10 Improvements.
- The Campus Project Team worked on the development of commissioning specifications for the bidding package for a general contractor. This document delineated the extent and steps of verification for the functionality of components throughout the structure. An initial draft was prepared and reviewed by CBRE-Heery, the project's commissioning agent.
- Initial comments from Campus Facilities were provided to the AOR on the 50% CDs installment. The Campus Project Team expected the delivery of an estimate of probable cost from Pfeiffer for the 50% CDs submittal. Pfeiffer conducted the final steps of addressing comments from Kelly Sutherlin McLeod (KSM) Architecture, the project's historic architect, which reviewed the design for adherence to the historic context of the new buildings to the adjacent buildings. The AOR generated a summary of the



PROJECT STATUS REPORT — FULLERTON CAMPUS

UPDATES ON CAMPUS PROJECTS - FULLERTON COLLEGE (Continued)

final adjustments to the design to elevations along the west side of the new structure. The comments were reviewed by KSM and feedback will be incorporated by Pfeiffer to the 100% CDs by the anticipated October 2022 completion, with submittal to DSA soon after in November 2022.

- The Campus Project Team held an in-person meeting with Pfeiffer for the review and verification of the current site conditions. The site walk was accompanied by Campus Facilities and members of the Campus Project Team.
- In August, the Campus Project Team and Pfeiffer started the development of the Division 1 language for the project's general conditions. Initial drafts will be circulated between the teams in preparation for a final set to be completed in October.
- The Design Team released a milestone schedule highlighting meetings and key decisions to finalize the CDs for DSA submittal. Sessions will be held with the Campus Project Team and College Faculty to finalize the scene shop layout, light fixture selection, location plus requirements for teaching surfaces such as whiteboards and tack boards. Reviews will also be conducted with Campus Facilities to finalize the layout for site irrigation. In this period, the teams will also review the furniture, fixtures, and equipment (FF&E) requirements and budget. Coordination meetings with Fullerton Fire Department took place in August.
- Pfeiffer has provided additional details and revisions to the entry portal between the New Performing Arts Complex and the Wilshire Auditorium. The team has also clarified that no new construction will touch the Wilshire Auditorium except for hardscape and landscape activities in a space called Wilshire Court. The details are under review by KSM Architects for the historic review of the design at the CDs phase.



New Performing Arts Complex West Elevation Rendering

Wilshire Plant Relocation

- A schedule was submitted for the expected milestones for the completion of design and construction start of this project. The milestones submitted by Pfeiffer took place before the start of construction for the New Performing Arts Complex. The Campus Project Team will be receiving the 90% CDs from

PROJECT STATUS REPORT — FULLERTON CAMPUS

UPDATES ON CAMPUS PROJECTS - FULLERTON COLLEGE (Continued)

the AOR in September 2022, and submittal to DSA for review and approval in October 2022. This submittal to the State Agency will precede the submittal to the New Performing Arts Complex in November 2022.

- By late August, the Design Team neared completion of the project's CDs submittal. Pfeiffer provided the 50% installment for review by the Campus Project Team on submittal by September 2nd.

Update / Improve Infrastructure

IT Network Refresh Project

- In May, verification of device connectivity was underway at Fullerton College. Upon completion of this activity, the focus shifted to the preparation for the deployment of Voice-over Internet Protocol (VoIP) phones throughout the Campus.
- In July, VoIP telephone cabling was back-ordered. Deliveries were anticipated to arrive in approximately seven weeks, ultimately resulting in a potential delay in the timely completion of this task. VectorUSA worked on strategies for addressing schedules and implementation to mitigate delays.
- The Campus Project Teams worked with VectorUSA on the development of use case scenarios for wireless internet users at all locations. In parallel, a testing plan for each case scenario was under development.
- District IS and VectorUSA reviewed data on payments completed to date to execute an expense transfer for equipment pieces purchased by Capital Outlay funds and transfer of these expenses to the established Bond fund budgets. The teams have identified entries, line by line, based on the detail available in every monthly billing. The journal reallocating expenditures approximately totaled \$5 million in aggregate and excludes labor, software, and license costs.
- District IS and VectorUSA have evaluated missing items identified during execution in the current implementation phase. These items are targeted to enhance the performance and safety of networks at the Campuses. The cost and timeline for the inclusion of these items in the current scope of work will be discussed in the upcoming months.
- In August, VectorUSA encountered setbacks in scheduling the roll-out of the VoIP phones at the remaining sites. In collaboration with Campus Facilities and Academic Computing, VectorUSA is developing solutions to these challenges and are moving forward with WIFI



AERIAL VIEW — ANAHEIM CAMPUS PROJECTS



Anaheim Campus Tower
First Floor Life/Safety Renovation
[Design - Construction Documents]

Swing Space Projects / Interim Housing
[DSA Review]

- ▶ Develop Interior and Exterior Signage [DSA Review]
- ▶ IT Network Refresh (Implementation)

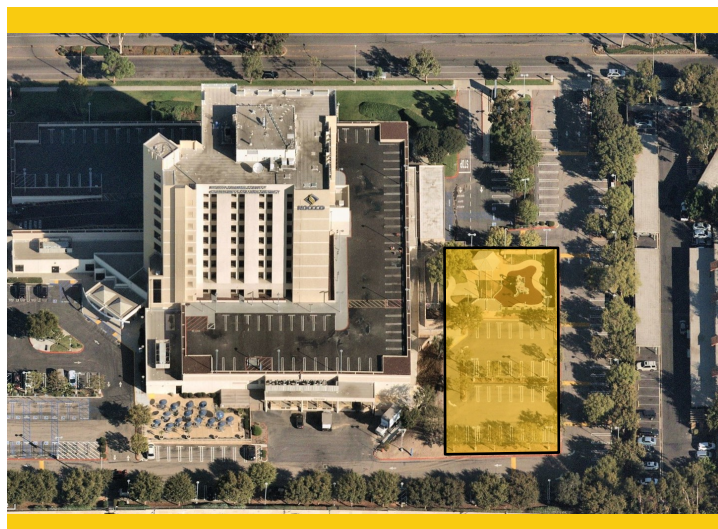


PROJECT STATUS REPORT — ANAHEIM CAMPUS

SWING SPACE PROJECTS / INTERIM HOUSING

DSA REVIEW

Address	1830 W. Romneya Dr. Anaheim, CA 92801
Project Manager	Richard Williams District Director Facilities, Planning, and Construction
Architect	SVA Architects, Inc.
Project Delivery Method	Design-Bid-Build



Project Overview

As a result of the upcoming project to complete extensive repairs due to water intrusion at the Upper Deck Parking Lot, there is a need to temporarily relocate classrooms and facilities located on the 1st floor of the Anaheim-NOCE Campus before the start of construction activities. These new temporary modular buildings will allow for NOCE's instruction activities to continue during the repairs to the existing structure. Included are the design, assembly, construction, rent, and dismantling of 12 modular classrooms and associated facilities.

- Total Project Budget\$2,115,300
- Funding SourceMeasure J + Local
 - Measure J\$2,000,000
 - Local\$115,300
- Project Gross Square Footage.....TBD
- Estimated Construction Start.....December 2022
- Targeted Construction CompletionJune 2023
- Temporary Structures Anticipated DismantlementFall 2025



PROJECT STATUS REPORT — ANAHEIM CAMPUS

SWING SPACE PROJECTS / CULINARY ARTS

DESIGN-CONSTRUCTION DOCUMENTS

Address 9200 Valley View St.
Cypress, CA 90630

Project Manager Allison Coburn
Cypress College

Architect HPI Architecture

Project Delivery Method Design-Bid-Build



Project Overview

As a result of the upcoming project to complete extensive repairs due to water intrusion at the upper deck parking lot part, there is a need to temporarily relocate classrooms and facilities located on the 1st floor of the Anaheim-NOCE Campus before the start of construction activities. A temporary modular building will allow for Cypress College's Culinary Arts Department instruction activities to continue during the repairs to the existing structure.

- Total Project Budget\$2,500,000
- Funding SourceMeasure J
- Project Gross Square Footage.....To Be Determined
- Estimated Construction Start.....February 2023
- Targeted Construction CompletionJuly 2023
- Temporary Structures Anticipated DismantlementTo be Determined



PROJECT STATUS REPORT — ANAHEIM CAMPUS

DEVELOP INTERIOR AND EXTERIOR SIGNAGE

DSA REVIEW

Address	1830 W. Romneya Dr. Anaheim, CA 92801
Project Manager	Richard Williams District Director Facilities, Planning, and Construction
Architect	Westberg White
Project Delivery Method	TBD
DSA Application A#	04-121174, 04-121175



Project Overview

Furnish and install new informational and wayfinding signage at indoor and outdoor spaces throughout the Anaheim Campus based on a uniform design standard under development by Westberg White Architecture.

- Total Project Budget\$1,146,431
- Funding SourceMeasure J & Local
 - Measure J\$1,087,431
 - Local\$59,000
- Project Gross Square Footage.....N/A
- Estimated Construction Start.....October 2022
- Targeted CompletionMarch 2023



PROJECT STATUS REPORT — ANAHEIM CAMPUS

ANAHEIM CAMPUS TOWER FIRST FLOOR LIFE/SAFETY RENOVATION DESIGN - CONSTRUCTION DOCUMENTS

Address 1830 W. Romneya Dr.
Anaheim, CA 92801

Project Manager Richard Williams
District Director
Facilities, Planning, and
Construction

Architect SVA Architects

Project Delivery Method Design-Bid-Build



Project Overview

Based on a recent study on water intrusion completed in late 2018 by R2A Architecture in collaboration with KPFF, Rodriguez Engineering, Inc. and Allana Buick & Bers, Inc. several extensive repairs are needed to mitigate and limit the points of water intrusion through the upper deck parking lot surrounding the Anaheim tower.

- Total Project Budget\$12,580,000
- Funding SourceMeasure J & State
 - Measure J\$2,183,000
 - State\$10,397,000
- Project Gross Square Footage.....61,952 ASF
- Estimated Construction Start.....May 2023
- Targeted CompletionSpring 2025



PROJECT STATUS REPORT — ANAHEIM CAMPUS

UPDATE/IMPROVE INFRASTRUCTURE

IMPLEMENTATION

Address	1830 W. Romneya Dr. Anaheim, CA 92801	Total Project Budget	\$1,766,540 (Measure J)
		Total Budget Allocated	\$1,097,250 (Measure J)
Number of Projects	2	Funding Source	Measure J & Capital Outlay

General Overview

Projects to address infrastructure improvements or upgrades throughout the Campus. Funds are allocated to projects as needs are identified.

IT Network Refresh Project Overview

IMPLEMENTATION

Assessment of Campus data network infrastructure to identify necessary upgrades, and changes that will enable supporting future Campus needs; specifically addressing wired, wireless, voice, and video networks. Design of a new network will account for the District's needs specific to logical infrastructure for the next 10 years. Physical infrastructure will also account for the District's needs for the next 20 years. The scope includes replacing network core switches, providing a more responsive support structure, preparing for cloud computing, and adaptation of Voice over Internet Protocol (VoIP) systems across the District.

- Project Budget \$5,935,452
 - Current Implementation (Measure J) \$754,209
 - Current Implementation (Capital Outlay)..... \$4,935,452
 - Upcoming Phases (Measure J) \$245,791
- Funding Source Measure J & Capital Outlay Funds
- Project Delivery Method California Multiple Award Schedule (CMAS)
- Design Implementation..... VectorUSA
- Architect..... Shandam Consulting
- Project Management District IS / PlanNet Consulting
- Design Implementation Start November 2019
- Targeted Completion January 2023



PROJECT STATUS REPORT — ANAHEIM CAMPUS

UPDATES ON CAMPUS PROJECTS - ANAHEIM CAMPUS

Swing Space Projects / Interim Housing

- In the preparation for a Request for Proposals (RFP) for the Swing Space-Interim Housing, the Campus Project Team formatted District bidding and contract templates for CUPCAA-approved general contractors. The Campus Project Team coordinated with District IS for the Information of telecommunication components that took place in two phases and was carried out by a separate contract from the modular building and infrastructure scope of work.
- SVA Architects' civil engineer developed the new fire line and hydrant plans. Mobile Modular responded to DSA back-check comments and made corrections to the final plans. The project Design Team obtained conditional approval from the city of Anaheim Public Works for the new Fire Water line. A complete approval was expected at the end of August with the completion of the review by the local Fire Department. Upon approval by the Fire Department, the city of Anaheim will then approve the offsite work, ultimately leading the Design Team to submit all of the revised documents to DSA for final review and approval for construction.
- In August, the majority of back-check comments were addressed by the AOR. Items pending responses from Mobile Modular for the temporary structures were submitted to the State agency in the early weeks of July. For August, coordination for the establishment of a back-check date was in the works with DSA, following the resolution of questions posed by the State Agency to SVA. The Campus Project Team has prepared bid documents for the start of the selection of a general contractor upon approval of the construction document by DSA.



Swing Space / Interim Housing Future Location — July 2021

Anaheim Campus Tower First Floor Life/Safety Renovation

- The Campus Project Team provided review comments to the first installment of Preliminary Plans (PPs) provided by SVA. Incorporation of these comments took the place of the final set that was



PROJECT STATUS REPORT — ANAHEIM CAMPUS

UPDATES ON CAMPUS PROJECTS - ANAHEIM CAMPUS (Continued)

submitted to DSA in late June 2022. A revised cost estimate was provided by SVA on the project at PPs. The construction cost estimate was estimated at \$7.3M. As the architect reached the halfway point in the design process, the completion of upcoming stages in the process will provide additional granularity to add details to the estimated cost for construction. The project's PPs continued to be under review at CCCC. An authorization to proceed with the second half of the design is predicated on the approval of this initial phase. Clearance to proceed and funding allocation for the upcoming design phase from the Department of Finance were originally expected by the end of August 2022.

- However, CCCC informed the District of internal delays in the authorization of funds for the remainder of the design. Approval is now anticipated in September 2022. In the meanwhile, additional details on soft cost for the project estimate have been provided to supplement all submitted information to the State organization.
- The Campus Project Team is conducting a milestone schedule review to adjust anticipated dates for bidding and construction start in light of the delay in the approval of PPs and funding from CCCC and the State's Department of Finance. A new schedule was released upon the anticipated receipt of the approvals in mid-August 2022.
- The Campus Project Team retained a hazardous materials consultant for the testing of asphalt samples for Asbestos-Containing Materials (ACM). The process for abatement requirements of any components found will follow test results and be part of the upcoming proposed scope of work.

Develop Interior and Exterior Signage

- Meeting with NOCE's leadership and the project's architect resulted in a completed listing for the location of interior signage. Westberg White worked on the CDs for the larger signage elements. Preparation for the submittal to DSA for review and approval took place in two application numbers, one per location. Submittal to the State agency happened in July 2022.
- The AOR received the first review comments from DSA in late July 2022. Westberg White Architecture addressed the comments and modified the design for the interior signage in response to the observations from the State agency. Some modifications would result in cost increases during the fabrication and construction phases. The design team has then provided the District with potential modifications to the planned scope to remain within the budgetary expectations for the project.
- Review and approval to proceed were received in August. Westberg White conducted meetings with the Campus Project Team and District to finetune details in preparation for bidding of the CDs of



PROJECT STATUS REPORT — ANAHEIM CAMPUS

UPDATES ON CAMPUS PROJECTS - ANAHEIM CAMPUS (Continued)

exterior and interior signage upon approval from DSA. Bidding will commence soon thereafter for a construction start in late 2022.

Swing Space Projects / Culinary Arts

- HPI Architecture narrowed the total square footage for the new temporary location, dining area, and linkages for pedestrian traffic. Meetings were underway from late July and executed by mid-August for the completion of the 60% CDs installment due for review prior to submittal of the final documents to DSA. These meetings were inclusive of arrangements for the best flow of students, faculty, and personnel between the two areas with extensive department member involvement in the process. Based on the feedback received, it was determined that the spaces should have separate entrances differentiating pedestrian flows between customers and staff. Work continued by the Campus Project Team on the temporary building interior distribution and sitting arrangements with the Design Team. They determined the manufacturer from whom the procurement process for the dining and restroom facilities would begin.
- Meetings with the BUG were conducted in August to review the current design. Budget reconciliation is in progress between the established budget and the anticipated costs for construction with the current scope of work. The Campus Project Team and Design Team will be exploring value engineering opportunities for implementation in the upcoming weeks.

Update / Improve Infrastructure IT Network Refresh Project

- VectorUSA addressed the wireless internet rollout at Anaheim Campus. The installation and configuration of the access points were completed earlier in the reporting period.
- District IS and VectorUSA reviewed data on payments completed to date to execute an expense transfer for equipment pieces purchased by Capital Outlay funds and transfer of these expenses to the established Bond fund budgets. The teams have identified entries, line by line, based on the detail available in every monthly billing. The journal reallocating expenditures approximately totaled \$5 million in aggregate and excludes labor, software, and license costs.
- District IS and VectorUSA have been evaluating missing items identified during execution in the current implementation phase. These items are targeted to enhance the performance and



PROJECT STATUS REPORT — ANAHEIM CAMPUS

UPDATES ON CAMPUS PROJECTS - ANAHEIM CAMPUS (Continued)

safety of networks at the Campuses. The cost and timeline for the inclusion of these items in the current scope of work will be discussed in the upcoming months.

- The Campus Project Teams worked with VectorUSA on the development of use case scenarios for wireless internet users at all locations. In parallel, a testing plan for each case scenario is under development.
- Voice over Internet Protocol (VoIP) telephone cabling was back-ordered. Deliveries are anticipated in seven weeks, ultimately resulting in a potential delay in the timely completion of this task. VectorUSA is working on strategies for addressing schedules and implementation to mitigate delays.
- In August, VectorUSA encountered setbacks in scheduling the roll-out of the VoIP phones at the remaining sites. In collaboration with Campus Facilities and Academic Computing, VectorUSA is developing solutions to these challenges and are moving forward with WIFI Installation as well as the development of use cases for each role for internet access.
- District IS refined a list of items of needed supplemental small projects that are not in the scope of the current project to be addressed in the upcoming year by teams at each Campus.



COMPLETED PROJECTS

- CYPRESS CAMPUS
- FULLERTON CAMPUS
- NOCE—ANAHEIM CAMPUS & DISTRICT OFFICES



COMPLETED PROJECTS

Cypress Campus

Project Name	Funding Sources	Final Project Cost	Completion Date
Swing Space Projects - Gym II Improvements	Measure J	\$124,683	July 2018
Swing Space Projects - Parking Lot 5 Realignment	Measure J	\$2,001,369	September 2018



Completed Parking Lot 5 Realignment from the Library & Learning Resource Center (LLRC) at Cypress College

Mass Communication & Security Systems Upgrade: Safety Film	Measure J	\$145,772	January 2019
Mass Communication & Security System Upgrade: Door Replacement	Measure J	\$50,671	January 2019
Update / Improve Infrastructure: Central Plant Upgrades	Measure J	\$58,768	October 2020
Baseball Field Improvements	Measure J and Local	Meas. J = \$1,905,141 Local = \$159,467	May 2021

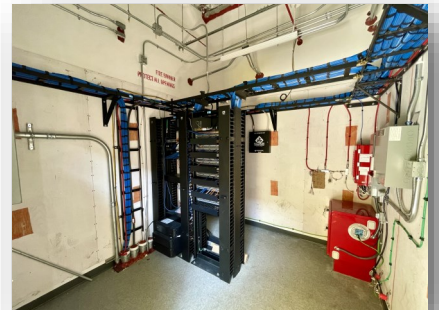


Completed Baseball Field Improvements at Cypress College

COMPLETED PROJECTS

Cypress Campus (continued)

Project Name	Funding Sources	Final Project Cost	Completion Date
New Science, Engineering, and Mathematics Building	Measure J Local Federal	Meas J = \$94,068,202 Local = \$3,000,000 Federal = \$791,352 Sche. Maint. = \$53,584	September 2021
Update / Improve Infrastructure (New SEM)	Measure J	\$2,805,131	September 2021
Update / Improve Infrastructure (IT-New SEM)	Measure J	\$645,883	September 2021
Mass Communications & Security Systems Upgrade (New SEM)	Measure J	\$389,367	September 2021

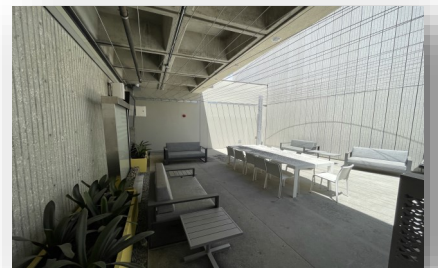
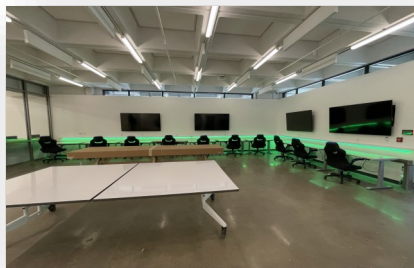


Completed New Science, Engineering, and Mathematics Building at Cypress College

COMPLETED PROJECTS

Cypress Campus (continued)

New Veterans' Resource Center / Student Activities Center Expansion	Measure J Local	Meas J. = \$13,411,167 Local = \$89,764	July 2021
Update / Improve Infrastructure (VRC/SAC)	Measure J	\$1,077,912	July 2021
Update / Improve Infrastructure (IT-VRC/SAC)	Measure J	\$181,761	July 2021
Mass Communications & Security Systems Upgrade (VRC/SAC)	Measure J	\$60,938	July 2021



Completed New VRC / SAC at Cypress College

COMPLETED PROJECTS

Cypress Campus (continued)

Veterans' Memorial Bridge, Plaza, and Tribute Garden	Local	\$1,365,397	July 2021
--	-------	-------------	-----------



Completed Veteran's Memorial Bridge, Plaza, and Tribute Garden at Cypress College

Pond Refurbishment	Local	\$623,873	July 2021
--------------------	-------	-----------	-----------



Completed Pond Refurbishment at Cypress College

COMPLETED PROJECTS

Fullerton Campus

Project Name	Funding Sources	Final Project Cost	Project Start Date	Completion Date
Update and Improve Infrastructure / Buildings 300-500 Sewer Line	Measure J and Scheduled Maintenance	Meas. J = \$444,702 Local = \$85,559	May 2018	July 2020



Completed Sewer Line Replacement to Buildings 300 and 500 at Fullerton College

Project Name	Funding Sources	Final Project Cost	Completion Date
Greenhouse Replacement	Measure J and Local	Meas. J = \$834,381 Local = \$817,724	August 2021



Completed Greenhouse Replacement at Fullerton College

COMPLETED PROJECTS

Fullerton Campus (Continued)

Project Name	Funding Sources	Final Project Cost	Completion Date
Central Plant Replacement & Expansion	Measure J	Meas. J = \$10,600,000	September 2021



Completed Central Plant Replacement & Expansion at Fullerton College

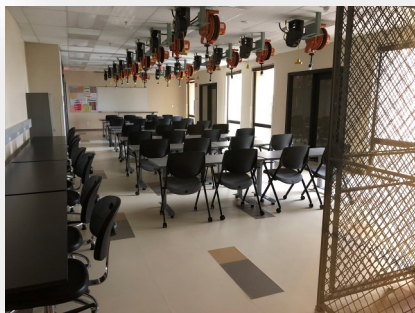
Project Name	Funding Sources	Final Project Cost	Completion Date
New Instructional Building	Measure J Local	\$53,588,031 \$200,000	March 2022
Update/Improve Infrastructure (IT-New Instructional Building)	Measure J	\$278,982	March 2022



COMPLETED PROJECTS

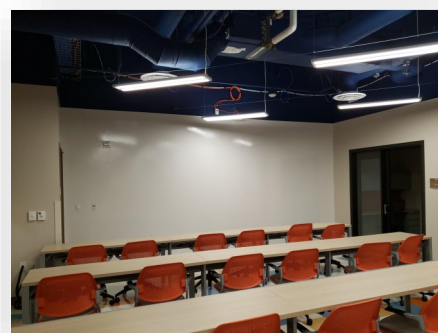
NOCE—Anaheim Campus & District Offices

Project Name	Funding Sources	Final Project Cost	Completion Date
5th Floor CTE Laboratory and 2nd Floor Room 215	Measure J	\$640,736	September 2018



Views of the Completed 5th Floor CTE Lab for North Orange Continuing Education at Anaheim Campus

Project Name	Funding Sources	Final Project Cost	Completion Date
7th and 10th Floors Buildout	Measure J and Measure X	Meas. J = \$949,134 Meas. X = \$4,252,430	June 2019



Completed lobby and co-working spaces on the 7th and 10th Floors at Anaheim Campus



COMPLETED PROJECTS

NOCE—Anaheim Campus & District Offices (continued)

Project Name	Funding Sources	Final Project Cost	Completion Date
Secondary MDF Room	Measure J	\$97,250	March 2021



Views of the Secondary MDF Room at the Anaheim Campus Central Plant Mezzanine

FINANCIAL REVIEW

- Capital Projects Update
- Estimated Project Budgets
- 90-Day Look Ahead Schedule



CAPITAL PROJECT UPDATES

**North Orange County Community College District
Measure J
Capital Projects Update
As of July 31, 2022**

Bond Authorization:

Bond Authorization	574,000,000	100.00%
Bonds Sold - Series A + B	250,000,000	43.55%
Available Principal Amount of Bonds	324,000,000	56.45%

Bond Funding Sources (Budget):

		Actual Received	Remaining Balance
Bond Authorization	574,000,000	250,000,000	324,000,000
Estimated Net Interest Earnings	11,000,000	9,623,594	1,376,406
Totals	585,000,000	259,623,594	325,376,406

Cost Status:

Campus	Total Budget	%	Actual Expenses to Date	Remaining Balance
Anaheim Campus	23,607,800	4.03%	2,801,013	20,806,787
Cypress Campus	225,921,200	38.62%	119,513,723	106,407,477
Fullerton Campus	311,126,400	53.18%	67,578,054	243,548,346
District Expenses				
• Program Management	20,000,000	3.42%	7,315,774	12,684,226
• Bond Issuance Cost	3,544,600	0.61%	1,301,760	2,242,840
• Other Bond Expense	800,000	0.14%	377,452	422,548
Totals	585,000,000	100.00%	198,887,775	386,112,225



ESTIMATED PROJECT BUDGETS

CYPRESS CAMPUS

CURRENT PROJECTS

PROJECT BUDGET/VARIANCE REPORT—CYPRESS

CURRENT PROJECTS	Measure J Budget APR FY 2021-22	Measure J Budget JUL FY 2022-23	Variance	Measure J Expenses Thru JUL 2022	Balance
Swing Space Projects	\$ 1,034,003	\$ 1,034,003	\$ -	\$ -	\$ 1,034,003
Swing Space Fine Arts (Old SEM)	\$ 5,626,285	\$ 5,626,285	\$ -	\$ 332,448	\$ 5,293,837
Swing Space Tech I/ Tech III (Old SEM)	\$ -	\$ -	\$ -	\$ -	\$ -
Fine Arts Building Renovation	\$ 33,413,861	\$ 33,413,861	\$ -	\$ 1,117,546	\$ 32,296,315
Update/Improve Infrastructure	\$ 8,482,599	\$ 8,482,599	\$ -	\$ -	\$ 8,482,599
Update/Improve Infrastructure (IT)	\$ 5,101,587	\$ 5,101,587	\$ -	\$ 1,962,397	\$ 3,139,190
Update/Improve Infrastructure (Under Piazza & Stairwell Restoration)	\$ 3,300,000	\$ 3,300,000	\$ -	\$ -	\$ 3,300,000
Update/Improve Infrastructure (Piazza Above SAC)	\$ 3,000,000	\$ 3,000,000	\$ -	\$ -	\$ 3,000,000
Library-Learning Resource Center Expansion	\$ 5,038,665	\$ 4,546,665	\$ (492,000)	\$ 38,665	\$ 4,508,000
EV SCE Charging Stations	\$ -	\$ 492,000	\$ 492,000	\$ -	\$ 492,000
Central Plant Upgrade	\$ 7,000,000	\$ 7,000,000	\$ -	\$ -	\$ 7,000,000
Mass Communications & Security Systems Upgrade	\$ 1,942,855	\$ 1,942,855	\$ -	\$ -	\$ 1,942,855
Campus-Wide Security Systems Upgrade	\$ 1,816,170	\$ 1,816,170	\$ -	\$ 184,156	\$ 1,632,014
Campus-Wide Security Systems Upgrade (Phase 1)	\$ 371,367	\$ 371,367	\$ -	\$ -	\$ 371,367
Pool Restoration and Upgrade	\$ 3,909,470	\$ 3,909,470	\$ -	\$ -	\$ 3,909,470
Tech I/Tech III CTE Complex	\$ 28,337,107	\$ 28,337,107	\$ -	\$ -	\$ 28,337,107
Planning (Non Project Specific)	\$ 544,000	\$ 544,000	\$ -	\$ 499,041	\$ 44,959
Gym I/Gym II Restoration and Restrooms	\$ -	\$ -	\$ -	\$ -	\$ -
Under Piazza & Stairwell Restoration	\$ -	\$ -	\$ -	\$ -	\$ -
Gateway Phase 1	\$ -	\$ -	\$ -	\$ -	\$ -
Athletic Field Realignment/Entry Revisions/Parking Lot Improvements	\$ -	\$ -	\$ -	\$ -	\$ -
COMPLETED PROJECTS					
New Science, Engineering, and Mathematics Building	\$ 94,068,202	\$ 94,068,202	\$ -	\$ 93,742,442	\$ 325,760
Update/Improve Infrastructure (New SEM)	\$ 2,805,131	\$ 2,805,131	\$ -	\$ 2,805,131	\$ -
Mass Communications & Security Systems Upgrade (New SEM)	\$ 389,367	\$ 389,367	\$ -	\$ 389,367	\$ -
Update/Improve Infrastructure (IT - New SEM)	\$ 645,883	\$ 645,883	\$ -	\$ 645,883	\$ -
New Veterans' Resource Center & Student Activities Center Expansion	\$ 13,411,167	\$ 13,411,167	\$ -	\$ 12,113,165	\$ 1,298,002
Update/Improve Infrastructure (VRC/SAC)	\$ 1,077,912	\$ 1,077,912	\$ -	\$ 1,077,912	\$ -
Mass Communications & Security Systems Upgrade (VRC/SAC)	\$ 60,938	\$ 60,938	\$ -	\$ 60,938	\$ -
Update/Improve Infrastructure (IT - VRC/SAC)	\$ 181,761	\$ 181,761	\$ -	\$ 181,761	\$ -
Veterans' Memorial Bridge and Tribute Garden	\$ -	\$ -	\$ -	\$ -	\$ -
Baseball Field Improvements	\$ 1,905,141	\$ 1,905,141	\$ -	\$ 1,905,141	\$ -
Swing Space - Gym II Renovation	\$ 124,682	\$ 124,682	\$ -	\$ 124,682	\$ -
Swing Space - Parking Lot 5 Expansion	\$ 2,001,369	\$ 2,001,369	\$ -	\$ 2,001,369	\$ -
Swing Space - Old SEM (Roofing)	\$ 76,467	\$ 76,467	\$ -	\$ 76,467	\$ -
Swing Space - Other	\$ -	\$ -	\$ -	\$ -	\$ -
Update/Improve Infrastructure (Central Plant Enhancements)	\$ 58,768	\$ 58,768	\$ -	\$ 58,768	\$ -
Mass Communications & Security Systems Upgrade (Safety Film)	\$ 145,772	\$ 145,772	\$ -	\$ 145,772	\$ -
Mass Communications & Security Systems Upgrade (Door Replacement)	\$ 50,671	\$ 50,671	\$ -	\$ 50,671	\$ -
SUB TOTAL	\$ 225,921,200	\$ 225,921,200	\$ -	\$ 119,513,723	\$ 106,407,478

1. PETR 2022-24 CC transferred Measure J Budget into EV SCE Charging Stations Project to create a new Project.
2. Financial close-out is in progress. Contract balances will be transferred to active projects.



ENCUMBRANCES OVER \$10,000

CYPRESS CAMPUS - New Encumbrances (Jun. 2022 - Aug. 2022)

Project	Vendor	Purchase Order No.	Purchase Order Amount	Scope of Work
Campus-Wide Security Systems Upgrade (Phase 1)	ASSI Security	P0151385	\$89,040	Monitoring Equipment
Campus-Wide Security Systems Upgrade (Phase 1)	ASSI Security	P0153148	\$34,083.74	Monitoring Equipment
Campus-Wide Security Systems Upgrade (Phase 1)	Sidepath, Inc.	P0151425	\$125,485.97	Video Surveillance Storage
Electrical Vehicles (EV) SCE Charging Stations	ChargePoint, Inc.	P0152517	\$384,596.19	Installing 60 Charging Stations
New Science, Engineering, and Mathematics Building	King Van & Storage Inc.	P0151860	\$60,000	Moving Services
Planning-CC (Non Project Specific)	Verde Design, Inc.	P0152260	\$20,850	Facility Assessment—Softball Field
Swing Space - Fine Arts (Old SEM)	New Dynasty Construction Co.	P0152120	\$2,005,000	General Contractor Services
Swing Space - Fine Arts (Old SEM)	Stephen Payte DSA Inspections Inc.	P0152505	\$104,320	DSA Inspector of Record
Swing Space - Fine Arts (Old SEM)	Sundt Construction, Inc.	P0152755	\$326,193	Construction Management Services



ESTIMATED PROJECT BUDGETS

FULLERTON CAMPUS

CURRENT PROJECTS

PROJECT BUDGET/VARIANCE REPORT—FULLERTON

CURRENT PROJECTS	Measure J Budget APR FY 2021-22	Measure J Budget JUL FY 2022-23	Variance	Measure J Expenses Thru JUL 2022	Balance
Renovate Buildings 300	\$ 20,482,000	\$ 20,482,000	\$ -	\$ 1,219,117	\$ 19,262,883
New M & O Building	\$ 6,758,944	\$ 6,758,944	\$ -	\$ 361,254	\$ 6,397,690
Chapman / Newell Instructional Building	\$ 21,985,777	\$ 21,985,777	\$ -	\$ 1,015,968	\$ 20,969,809
New Performing Arts Complex—Demolish Buildings 1100 and 1300	\$ 72,615,608	\$ 72,615,608	\$ -	\$ 1,024,754	\$ 71,590,854
New Welcome Center & Lot C West	\$ 37,353,872	\$ 37,353,872	\$ -	\$ -	\$ 37,353,872
New Horticulture/Lab School/STEM Lab	\$ 33,813,764	\$ 33,813,764	\$ -	\$ -	\$ 33,813,764
Renovate Building 840 Campus Services	\$ -	\$ -	\$ -	\$ -	\$ -
Demolish Building 2000	\$ 1,108,000	\$ 1,108,000	\$ -	\$ -	\$ 1,108,000
New Parking Structure	\$ 11,219,260	\$ 11,219,260	\$ -	\$ -	\$ 11,219,260
Update/Improve Infrastructure	\$ 23,162,352	\$ 20,062,352	\$ (3,100,000)	\$ -	\$ 20,062,352
Update/Improve Infrastructure (IT)	\$ 7,721,018	\$ 7,721,018	\$ -	\$ 3,266,700	\$ 4,454,318
New Thermal Energy Storage (TES)	\$ -	\$ -	\$ -	\$ -	\$ -
Renovate Building 600	\$ -	\$ -	\$ -	\$ -	\$ -
Renovate Health Center	\$ -	\$ -	\$ -	\$ -	\$ -
Renovate Faculty Lounge & Offices	\$ -	\$ -	\$ -	\$ -	\$ -
Renovate Wellness Center	\$ -	\$ -	\$ -	\$ -	\$ -
Landscape & Hardscape Improvements	\$ 3,840,000	\$ 3,840,000	\$ -	\$ -	\$ 3,840,000
Renovate Building 3100	\$ -	\$ -	\$ -	\$ -	\$ -
Demolish Building 1901-04, 1956-60, 3000	\$ 1,333,000	\$ 1,333,000	\$ -	\$ -	\$ 1,333,000
Parking Lot Improvements at Building 3000	\$ 1,999,500	\$ 1,999,500	\$ -	\$ -	\$ 1,999,500
Renovate Building 2100	\$ -	\$ -	\$ -	\$ -	\$ -
Demolish Buildings 2200 & 3104	\$ 1,392,209	\$ 1,392,209	\$ -	\$ -	\$ 1,392,209
Planning (Non Project Specific)	\$ 595,000	\$ 595,000	\$ -	\$ 257,346	\$ 337,654
Wilshire Chiller Plant Relocation	\$ -	\$ 3,100,000	\$ 3,100,000	\$ -	\$ 3,100,000
COMPLETED PROJECTS					
New Instructional Building	\$ 53,588,031	\$ 53,588,031	\$ -	\$ 50,215,940	\$ 3,372,091
Update/Improve Infrastructure (IT - Instructional Bldg.)	\$ 278,982	\$ 278,982	\$ -	\$ -	\$ 278,982
Central Plant Replacement & Expansion	\$ 10,600,000	\$ 10,600,000	\$ -	\$ 9,130,994	\$ 1,469,006
Greenhouse Replacement	\$ 834,381	\$ 834,381	\$ -	\$ 641,279	\$ 193,102
Update/Improve Infrastructure (Bldg 300-500 Sewer Line)	\$ 444,702	\$ 444,702	\$ -	\$ 444,702	\$ -
SUB TOTAL	\$ 311,126,400	\$ 311,126,400	\$ -	\$ 67,578,054	\$ 243,548,346

Project.

2. Financial close-out is in progress. Contract balances will be transferred to active projects.



ENCUMBRANCES OVER \$10,000

FULLERTON CAMPUS - New Encumbrances (Jun. 2022 - Aug. 2022)

Project	Vendor	Purchase Order No.	Purchase Order Amount	Scope of Work
Renovate Building 300	R2A Architecture	P0149492	\$43,710	Architectural Services
Renovate Building 300	Westberg White Inc	P0151618	\$1,101,500	Architectural Services
Wilshire Chiller Plant Relocation	Pfeiffer Partners Architects, Inc.	P0151619	\$151,400	Architectural Services



ESTIMATED PROJECT BUDGETS

ANAHEIM CAMPUS

CURRENT PROJECTS

PROJECT BUDGET/VARIANCE REPORT—ANAHEIM

CURRENT PROJECTS	Measure J Budget APR FY 2021-22	Measure J Budget JUL FY 2022-23	Variance	Measure J Expenses Thru JUL 2022	Balance
Update/improve Infrastructure	\$ 669,290	\$ 669,290	\$ -	\$ -	\$ 669,290
Update/improve Infrastructure (IT)	\$ 1,000,000	\$ 1,000,000	\$ -	\$ 772,680	\$ 227,320
Develop Interior and Exterior Signage	\$ 1,087,431	\$ 1,087,431	\$ -	\$ 7,749	\$ 1,079,682
Second Floor Tenant Improvements	\$ 813,000	\$ 813,000	\$ -	\$ -	\$ 813,000
Swing Space Projects/ Interim Housing	\$ 2,000,000	\$ 2,000,000	\$ -	\$ 138,464	\$ 1,861,536
Swing Space Culinary Arts (Temp. Facility)	\$ 2,500,000	\$ 2,500,000	\$ -	\$ 63,222	\$ 2,436,778
Anaheim Campus Tower First Floor Life/Safety Renovation	\$ 2,183,000	\$ 2,183,000	\$ -	\$ 98,303	\$ 2,084,697
Upper Deck Enhancements	\$ 309,901	\$ 309,901	\$ -	\$ 24,000	\$ 285,901
1st. Floor Remodel Student Center and Classrooms	\$ 2,352,720	\$ 2,352,720	\$ -	\$ -	\$ 2,352,720
Pedestrian and Vehicular Traffic Flow	\$ 2,329,000	\$ 2,329,000	\$ -	\$ -	\$ 2,329,000
4th Floor Improvements	\$ 218,000	\$ 218,000	\$ -	\$ -	\$ 218,000
Outdoor Patio Remodel	\$ 1,382,500	\$ 1,382,500	\$ -	\$ -	\$ 1,382,500
Develop Drop-Off Plaza at Romneya Drive	\$ 569,000	\$ 569,000	\$ -	\$ -	\$ 569,000
Develop Intersection at Romneya & Coronet	\$ -	\$ -	\$ -	\$ -	\$ -
Holding Account	\$ 4,100,000	\$ 4,100,000	\$ -	\$ -	\$ 4,100,000
Planning (Non Project Specific)	\$ 396,208 ¹	\$ 406,838	\$ 10,630	\$ 9,475	\$ 397,363
COMPLETED PROJECTS					
Update/Improve Infrastructure (Secondary MDF)	\$ 97,250	\$ 97,250	\$ -	\$ 97,250	\$ -
7th and 10th Floors Buildout	\$ 959,764 ¹	\$ 949,134	\$ (10,630)	\$ 949,134	\$ -
5th Floor CTE & 2nd Floor Room 215	\$ 640,736	\$ 640,736	\$ -	\$ 640,736	\$ -
SUB TOTAL	\$ 23,607,800	\$ 23,607,800	\$ -	\$ 2,801,013	\$ 20,806,787

1. PETR 2022-21 AC moved Budget back to Planning (Non Project Specific) Project after Budget Reconciliation



ENCUMBRANCES OVER \$10,000

ANAHEIM CAMPUS - New Encumbrances (Jun. 2021 - Aug. 2022)

Project	Vendor	Purchase Order No.	Purchase Order Amount	Scope of Work
Swing Space-Interim Housing	MAAS Companies, Inc.	P0151078	\$115,300	Project Management Services
Swing Space-Interim Housing	Mobile Modular	P0153967	\$557,628	Temporary Modular Buildings Rental



ESTIMATED PROJECT BUDGETS

DISTRICT

PROJECT BUDGET/VARIANCE REPORT—DISTRICT

DISTRICT WIDE EXPENSE	Measure J Budget APR FY 2021-22	Measure J Budget JUL FY 2022-23	Variance	Measure J Expenses Thru JUL 2022	Balance
Program Management Fees	\$ 20,000,000	\$ 20,000,000	\$ -	\$ 7,315,774	\$ 12,684,226
Bond Issuance Cost	\$ 3,544,600	\$ 3,544,600	\$ -	\$ 1,301,760	\$ 2,242,840
Other	\$ 800,000	\$ 800,000	\$ -	\$ 377,452	\$ 422,548
SUB TOTAL	\$ 24,344,600	\$ 24,344,600	\$ -	\$ 8,994,986	\$ 15,349,614



ENCUMBRANCES OVER \$10,000

DISTRICT - New Encumbrances (Jun. 2022 - Aug. 2022)

No Purchase Orders over \$10,000 have been issued for the District as of August 31, 2022



ACTIVE PROJECTS

90 - DAY LOOK AHEAD



NORTH ORANGE COUNTY COMMUNITY COLLEGE DISTRICT

CYPRESS - FULLERTON - ANAHEIM (NOCE)

90-DAY LOOK AHEAD SCHEDULE

(09-01-22 TO 11-30-22)



	September				October				November				Comments	
	6	13	20	27	4	11	18	25	1	8	15	22		29
GENERAL														
NOCCCD Board Meetings														September 13th, September 27th, October 11th, 25th, and November 8th, 22nd
COC Meetings														September 14th (In Person Meeting at Fullerton College)
Bond Program Management Team Mtgs.														September 20th, October 18th, and November 15th (meeting held via Zoom)
PLANNING														
DESIGN PHASE														
ANAHEIM														
Anaheim Campus Tower First Floor Life/Safety Renovation														
Construction Documents														Pending Preliminary Plans Approval From CCCC
Swing Space - Culinary Art (Temp.)														
Construction Documents														In Progress
CYPRESS														
Electrical Vehicles (EV) SCE Charging Stations-Lot 4														
Construction Documents														In Progress
LLRC														
Procurement / Installation														In Progress
FULLERTON														
Renovate Building 300														
Schematic Design (Revised Design with Seismic Upgrades)														In Progress
design development: 50% design Development														In Progress
Construction documents: 50% Construction Documents														Upcoming November 10th
New Performing Arts Complex														
Construction Documents														In Progress - Expected Completion November 2022
New M&O Building														
Construction Documents														In Progress
Chapman/Newell Instructional Building														
Construction Documents														In Progress
Wilshire Chiller Plant Replacement														
Construction Documents														In Progress
DSA PHASE & AGENCY REVIEW														
ANAHEIM														
Develop Interior and Exterior Signage														In Progress
Swing Space - Culinary Art (Temp.)														Upcoming October 14th
Swing Space - Interim Housing														In Progress, Fire Water Line scope under review by City of Anaheim Fire Department
CYPRESS														
Electrical Vehicles (EV) SCE Charging Stations-Lot 4														Upcoming October 5th
FULLERTON														
Renovate Building 300 - Evaluation Design Criteria Report (EDCR)														In Progress
New M&O Building														Upcoming September 7th
Chapman/Newell Instructional Building														Upcoming September 2nd
Performing Arts														Upcoming November 1st
Wilshire Chiller Plant Replacement														Upcoming October 1st
BIDDING														
ANAHEIM														
Swing Space - Interim Housing														Upcoming early October, pending DSA approval
CYPRESS														
Fine Arts Building Renovation														
Prequalification														In Progress
Bid Advertisement														Upcoming October 11th
Bid Phase														Upcoming October 24th
PRE-CONSTRUCTION PHASE														
CONSTRUCTION PHASE														
CYPRESS														
Swing Space - Fine Arts (Old SEM)														In Progress
Campus wide security systems upgrades														
Procurement / Installation														In Progress
NETWORK REFRESH														
Solarwinds Implementation														Upcoming October 3rd
FULLERTON														
Network, Wireless & VoIP Migration														Upcoming September 5th
Network, Wireless Migration														Upcoming September 12th
ANAHEIM														
Network, Wireless Migration														In Progress
Network, Wireless & VoIP Migration														In Progress
CYPRESS														
Network, Wireless Migration														Upcoming October 17th
Network, Wireless & VoIP Migration														In Progress



ACTIVE PROJECTS

90 - DAY LOOK AHEAD (Continued)



NORTH ORANGE COUNTY COMMUNITY COLLEGE DISTRICT

CYPRESS - FULLERTON - ANAHEIM (NOCE)

90-DAY LOOK AHEAD SCHEDULE

(09-01-22 TO 11-30-22)



					September					October					November					Comments
					6	13	20	27	4	11	18	25	1	8	15	22	29			
CLOSE-OUT PHASE																				
CYPRESS																				
Campus wide security systems upgrades																			Upcoming	
LLRC Secondary Data Center (Phase2)																		Upcoming		
New SEM																		In Progress		

* Non-Measure J expenditure activities



September 2022

Citizens' Oversight Committee

COC

Measure J Bond Program



1830 W. Romneya Dr., Building B., Anaheim, CA 92801