



SEPTEMBER 2024

1

Capital Projects Report to the

Citizens' Oversight Committee

MAAS

Date 09/04/2024

Construction Industry - Economic Pulse

Indicators for Q3-2024

- **Market Stability:** The overall market remains stable, with high borrowing costs and significant federal investment in infrastructure and manufacturing.
- **Material Price Trends:** Prices for construction materials have shown mixed trends, with some commodities increasing and others decreasing.
- **Labor Market:** Non-farm payroll employment increased, but the unemployment rate also rose slightly. Skilled construction wages are expected to grow above 4% through 2025. **Overall** the construction labor force has grown, particularly outside of California, due to workers relocating.
- **Construction Volume:** Housing starts are forecasted to rise, with nonresidential construction being the biggest growth area in 2024. Significant investments in infrastructure, such as semiconductor manufacturing, are expected to support local demand for workers.
- **Southwest Construction:** Major construction projects in the Southwest include semiconductor plants and data centers.

Source: ENR Construction Economics & Cumming
August 6, 2024

Current IPP and FPP Status

3

Cypress	Fullerton	Anaheim
Fine Arts Building Renovation (FPP) Approved	New Performing Arts Complex (FPP) Approved	Anaheim Campus Tower First Floor Life/Safety Renovation (FPP) Approved
	Renovate Building 300 (FPP) Approved	
	STEM Vocational Center (FPP) Re-submittal Approved	

Questions

PROJECTS IN PLANNING, PROGRAMMING, DESIGN, AND CONSTRUCTION

5

- Campus Site Plans
- Project Status Reports

Aerial View - Cypress Campus

6



Phase	
Planning	
Design	
Bidding	
Construction / Implementation	
Close-Out	

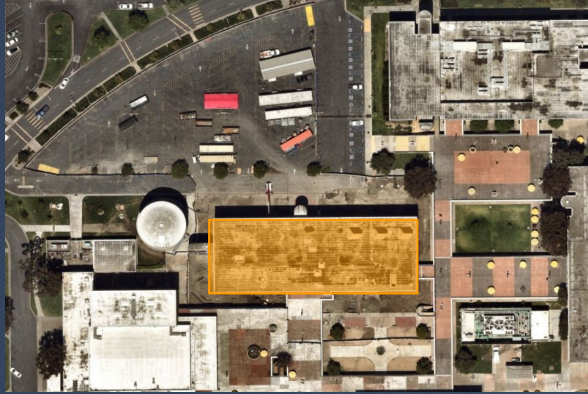
Updates on campus projects - Cypress College

Fine Arts Building Renovation

- Utility safe shutdown and rerouting activities completed. Hazardous materials abatement finished in July.
- Demolition continued on third floor into August.
- Soil work completed for ADA pathway connecting Theater Building to Fine Arts Building.
- Test pile driving began in July; installation began July 31 with 16 caissons in place and east elevation is finished.
- Micropile installation underway on building interior.
- Construction completion targeted in Fall 2026.



Fine Arts Building Renovation Construction Progress



Updates on campus projects - Cypress College

Electrical Vehicles (EV) SCE Charging Stations - Lot 4

- Trenching activities to make way for conduit pathway completed
- Asphalt **Paving** completed in July followed by paint striping to delineate parking spaces.
- Commissioning activities underway; the charging stations will be installed upon completion.
- Temporary construction fencing removed
- Construction completion anticipated in September 2024.



Electrical Vehicles (EV) SCE Charging Stations - Lot 4 Construction Progress



Updates on campus projects - Cypress College

Softball Field Renovations

- Foundation sizing requirements assessed based on soil testing.
- The Design Team and Architect of Record are identifying cost saving measures to meet budget requirements.
- Scope of work modifications will be presented to the Building User Groups (BUG) for agreement prior to proceeding into Design Development.
- Construction start anticipated in 2025.



Questions

Aerial View - Fullerton Campus



Phase	
Planning	Green
Design	Blue
Bidding / Procurement	Yellow
Construction / Implementation	Orange
Close-Out	Purple

Updates on campus projects - Fullerton College

14

Renovate Building 300

- Demolition and hazardous materials abatement completed except historic windows. Historical preservation efforts underway to preserve fenestrations and fixtures.
- The Fiber Reinforced Polymer system to change manufacturers at GC request; Icon West prepared a submittal to DSA in August.
- Cast-in-drill-hole (CIDH) testing was underway starting in late July. Concrete poured for two test piles, strength testing to follow three week curing period. Piles installation began at end of August. Micropile testing pending approval of submittal by DSA.
- Concrete pouring underway for ADA path of travel from Lemon St to Building 300.
- Construction end anticipated in October 2025.



Renovate Building 300 Construction Progress



Updates on campus projects - Fullerton College

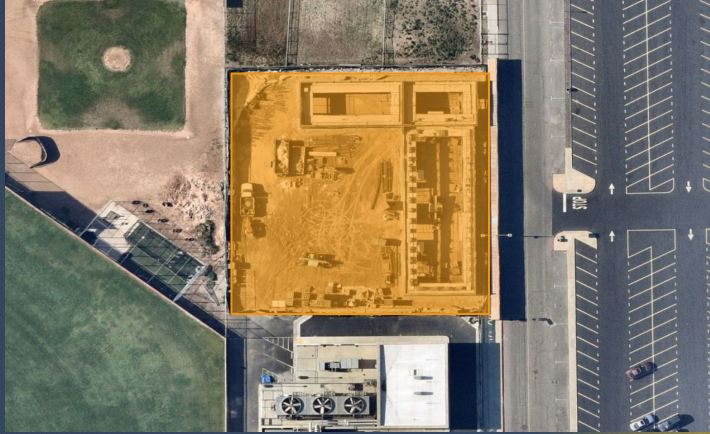
New M&O Building

- CMU activities concluded in mid-June with the completion of 5th to 9th lifts. Walls were then grouted.
- Topping - Out ceremony held on July 11 to commemorate roof installation; crane used to set roof frame in place marking conclusion of structural steel activities.
- Underground utilities for MEP started in late July.
- Sewer line connection concluded in mid-August.
- The deferred elevator guard rail was approved by DSA.
- Arthur J Gallagher finished site visit with no findings.
- Project completion anticipated in Winter 2024.



New M&O Building: Construction Activities

New M & O Building Construction Progress



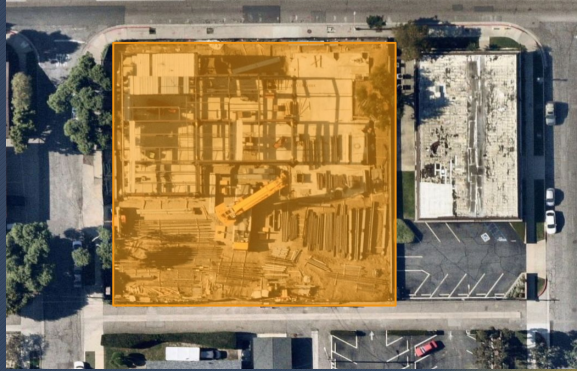
Updates on campus projects - Fullerton College

Chapman / Newell Instructional Building

- Utilities connection to City of Fullerton began in June and ended in July.
- Crews assembled metal structure for the building. Steel deck and stair installation concluded in July.
- Exterior framing underway; western and half of the southern facade of the building are done.
- HVAC activities and rebar work began on second floor. Wall framing and MEP plumbing underway. Concrete pours to start in August.
- Oak tree preservations underway.
- Construction completion anticipated in early 2025.



Chapman-Newell Instructional Building Construction Progress



Updates on campus projects - Fullerton College

New Performing Arts Complex & Demolition Buildings 1100 and 1300

- The Design Team determined the project is Title 24 compliant and follows state energy efficiency standards; submission made to CCCC for final authorization to enter the bidding phase.
- CCCC provided final approval to enter the bidding phase.
- The Campus Project Team is opting to wait to enter into the bidding phase in coordination with Wilshire Chiller Plant Relocation.
- Construction start estimated January 2025.



New Performing Arts Complex: Conceptual Design

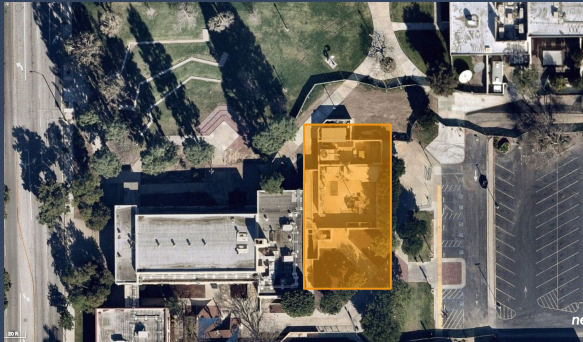
Updates on campus projects - Fullerton College

Wilshire Chiller Plant Relocation

- PPC conducted surveying and tracing; unforeseen conditions identified communications vault and copper and fiber optic cable; high voltage power lines; abandoned condenser 8" wide pvc pipe and former chiller equipment.
- Coordination is underway with VectorUSA, KDC, and Johnson Controls Inc to address rerouting, efforts.
- A preliminary design and reroute developed by Design Team and approved by Campus Facilities.
- Demolition and permitting approval for sewer connection with City of Fullerton on Lemon St.
- Construction completion targeted for July 2025.



Wilshire Chiller Plant Relocation Construction Progress



Updates on campus projects - Fullerton College

23

New Welcome Center & Lot C West

- The Campus Project Team worked with Westberg White on preliminary assessments.
- A probable cost of \$64M has been determined by Westberg White.
- Construction activities anticipated in 2026 after demolition of Bldgs. 1100 and 1300.



Updates on campus projects - Fullerton College

24

Athletic Field Improvements

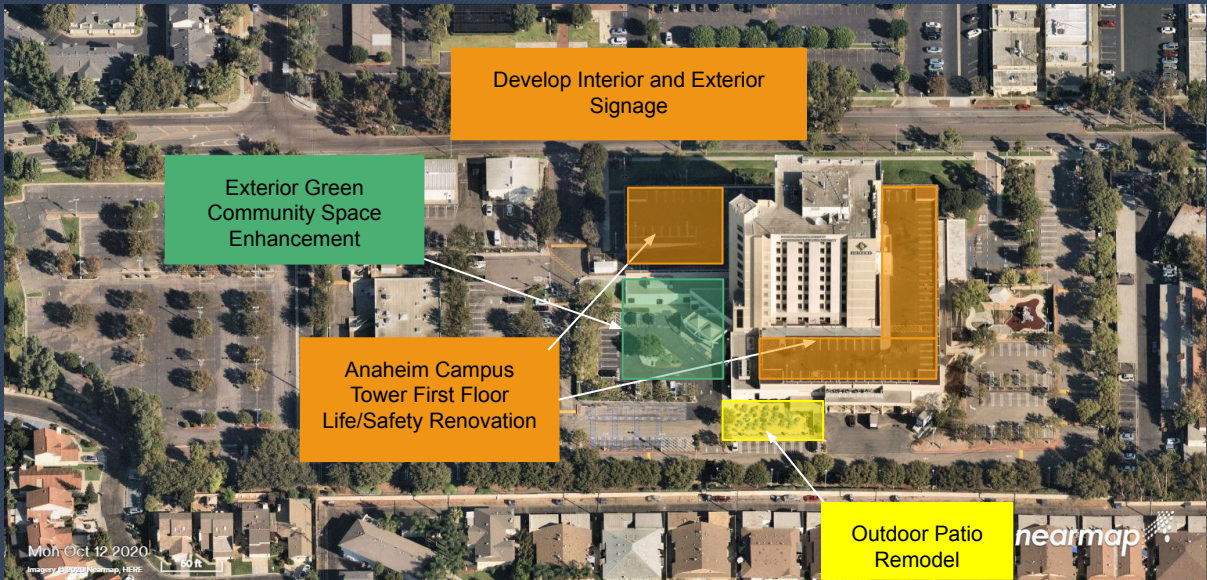
- Campus Leadership and Facilities met with the Building User Group (BUG) to discuss design requests.
- Campus Project Team reviewed the design proposal from Westberg White; a concept study will be implemented for additional input from Campus Facilities and BUG. A Purchase Order was issued to Westberg White to start on the planning and surveying.
- Request for Proposals for Architect of Record selection prior to the start of design.



Questions

Aerial View - Anaheim Campus

26



Phase	
Planning	
Design	
Bidding / Procurement	
Construction / Implementation	
Close-Out	

Updates on campus projects - Anaheim Campus

27

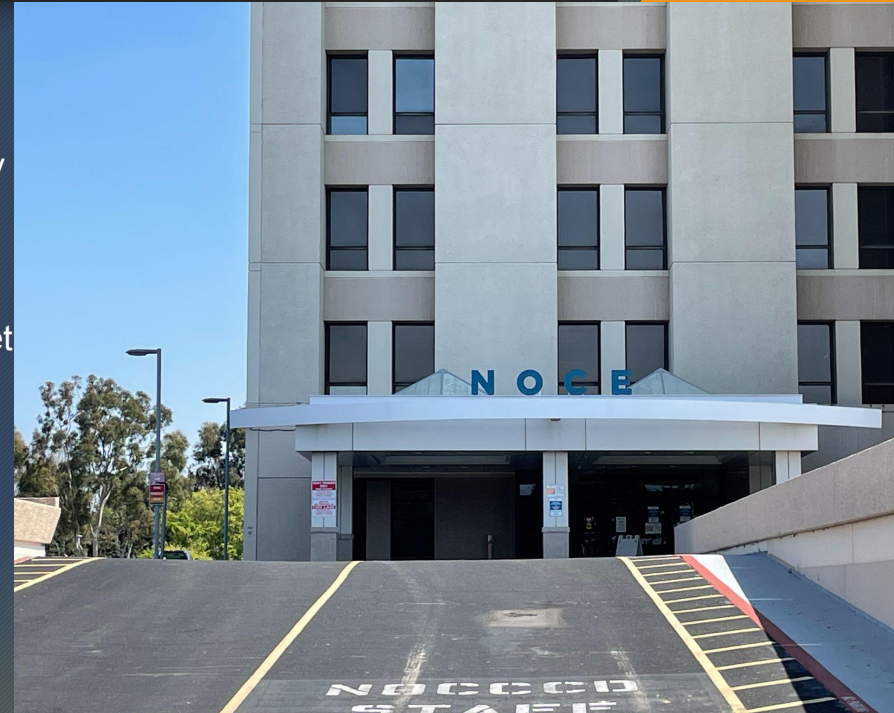
Develop Interior and Exterior Signage

Exterior

- Pricing of backing for metal signage is being revised by KYA Group by seeking new vendors estimates that indicate the cost potentially meets project budget.
- The Campus Project Team, Westberg White, and KYA Group are working on the canopy signage color to meet NOCE Campus standards. Installation is anticipated to be completed by end of summer.
- Construction Change Directives submitted to DSA for the marquee foundation signage and connection details on the canopy letters.

Interior

- There are no updates available for this reporting period.



Date 09/04/2024

Cypress Fullerton **Anaheim** IT Network Refresh

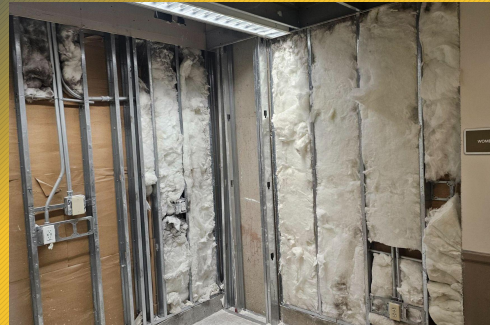
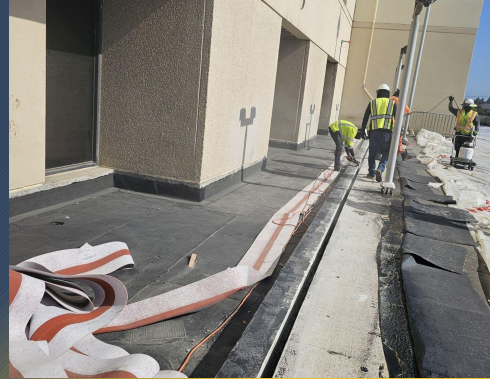
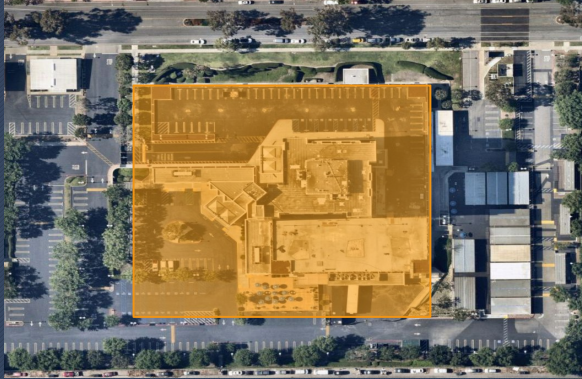
Updates on campus projects - Anaheim Campus

Anaheim Tower First Floor Life/Safety Renovation

- Upper deck demolition and abatement completed for all three areas.
- Waterproofing completed after expansion joints installed with RedLINE product to deter water seepage. ELT testing and associated corrections completed.
- Asphalt paving to begin throughout upper deck.
- Retaining wall waterproofing underway in August after approval of shoring design, soil testing and potholing.
- Changes to layout of **all gender** restroom underway after conflicts found in building footing.
- Construction completion anticipated in late 2024.



Anaheim Tower First Floor Life/Safety Renovation Construction Progress



Updates on campus projects - Anaheim Campus

30

Outdoor Patio Remodel

- Construction Documents reviewed by DSA; the Design Team addressed comments from the state agency. Final DSA approval received June 25.
- The project entered the bidding phase on July 29 after the District posted Bid Documents to PlanetBids.
- The Campus Project Team hosted a job walk with 19 interested firms on August 5; proposals to be received by August 29 via electronic portal.
- Construction start anticipated in September 2024.



Updates on campus projects - Anaheim Campus

31

Exterior Green Community Space Enhancement

- The project is anticipated to create a grand quad with amphitheater seating for gatherings like commencement
- The Campus Project Team and NOCE Leadership are developing project scope of work
- PBK-WLC is assisting in combining this project with a previously planned ADA accessibility project.



Questions

Project Safety Report

33

- Summary of safety incidents for all major construction projects

Classification	First Aid	Safety Stand Down	Near Miss	Equipment	Recordable	Incidents This Quarter
Cypress College						
Fine Arts Renovation (Sundt Construction)	1	0	0	0	0	2
Ev Charging Stations (Asplundh Construction)	0	0	0	0	0	0
Fullerton College						
Renovate Building 300 (Icon West)	0	0	0	0	0	0
New M&O Building (BN Builders)	0	0	1	0	0	1
Chapman/Newell Instructional Building (BN Builders)	0	0	0	0	0	1
Wilshire Chiller Plant Relocation	0	0	0	0	0	0
NOCE-Anaheim Campus						
Anaheim Tower First Floor Life/Safety Renovation (PCL Construction)	0	0	0	0	0	0

Financial Review

35

- Capital Projects Update
- Estimated Project Budgets
- 90-Day Look Ahead Schedule

North Orange County Community College District
Measure J
Capital Projects Update
As of July 31, 2024

Bond Authorization:

Bond Authorization	574,000,000	100.00%
Bonds Sold - Series A + B + C	400,000,000	69.69%
Available Principal Amount of Bonds	174,000,000	30.31%

Bond Funding Sources (Budget):

		Actual Received	Remaining Balance
Bond Authorization	574,000,000	400,000,000	174,000,000
Estimated Interest Earnings*:	23,187,842	23,187,842	-
Total Estimated:	597,187,842	423,187,842	174,000,000
Less Cost of Interest	800,000	525,045	274,955
Total Available for allocation:	596,387,842	422,662,797	173,725,045

Cost Status:

Campus	Total Budget	%	Actual Expenses to Date **	Remaining Balance
Anaheim Campus	23,107,800	3.89%	6,654,637	16,453,163
Cypress Campus	229,921,200	38.69%	126,369,609	103,551,591
Fullerton Campus	317,626,400	53.45%	81,763,907	235,862,493
District Expenses				
• Program Management	20,000,000	3.37%	10,444,242	9,555,758
• Bond Issuance Cost	3,544,600	0.60%	2,048,689	1,495,911
Totals	594,200,000	100.00%	227,281,084	366,918,916

* Estimated Interest Earnings amount is equal to Actual Received until FY 24-25 Budget is finalized

**Preliminary accrual reversals are posted above for July 2024. Final expenses for the months at the end of Fiscal Year 2023-2024 will be shown as actuals in the upcoming September 2024 report.

CURRENT PROJECTS

PROJECT BUDGET/VARIANCE REPORT—CYPRESS

37

CURRENT PROJECTS	Measure J Budget APR FY 2023-24	Measure J Budget JUL FY 2024-25	Variance	Measure J Expenses Thru JUL 2024	Balance
Fine Arts Building Renovation **	\$ 56,400,871	\$ 56,400,871	\$ -	\$ 3,861,433	\$ 52,539,438
Softball Field Renovations	\$ 4,000,000	\$ 4,000,000	\$ -	\$ 55,995	\$ 3,944,005
Update/improve Infrastructure	\$ 3,482,599	\$ 5,162,876	\$ 1,680,277	\$ -	\$ 5,162,876
Library-Learning Resource Center Expansion	\$ 2,590,000	\$ 2,590,000	\$ -	\$ -	\$ 2,590,000
Central Plant Upgrade	\$ 4,000,000	\$ 4,000,000	\$ -	\$ -	\$ 4,000,000
Mass Communications & Security Systems Upgrade	\$ 1,942,628	\$ 1,942,628	\$ -	\$ -	\$ 1,942,628
Pool Restoration and Upgrade	\$ 3,909,470	\$ 3,909,470	\$ -	\$ -	\$ 3,909,470
Tech I/Tech III CTE Complex	\$ 26,126,990	\$ 26,126,990	\$ -	\$ -	\$ 26,126,990
EV SCE Charging Stations	\$ 492,000	\$ 492,000	\$ -	\$ 336,969	\$ 155,031
Planning (Non Project Specific)	\$ 544,000	\$ 3,632,655	\$ 3,088,655	\$ 535,290	\$ 3,097,365
COMPLETED PROJECTS					
Swing Space Fine Arts (Old SEM)	\$ 3,783,795	\$ 3,748,140	\$ (35,655)	\$ 3,748,140	\$ -
Update/improve Infrastructure (IT)	\$ 5,101,587	\$ 3,421,310	\$ (1,680,277)	\$ 3,421,310	\$ -
New Science, Engineering, and Mathematics Building	\$ 92,095,385	\$ 92,095,385	\$ -	\$ 92,011,597	\$ 83,788
Update/improve Infrastructure (New SEM)	\$ 2,805,131	\$ 2,805,131	\$ -	\$ 2,805,131	\$ -
Mass Communications & Security Systems Upgrade (New SEM)	\$ 389,367	\$ 389,367	\$ -	\$ 389,367	\$ -
Update/improve Infrastructure (IT - New SEM)	\$ 645,883	\$ 645,883	\$ -	\$ 645,883	\$ -
New Veterans' Resource Center & Student Activities Center Expansion	\$ 12,124,766	\$ 12,071,766	\$ (53,000)	\$ 12,071,766	\$ -
Update/improve Infrastructure (VRC/SAC)	\$ 1,077,912	\$ 1,077,912	\$ -	\$ 1,077,912	\$ -
Mass Communications & Security Systems Upgrade (VRC/SAC)	\$ 60,938	\$ 60,938	\$ -	\$ 60,938	\$ -
Update/improve Infrastructure (IT - VRC/SAC)	\$ 181,761	\$ 181,761	\$ -	\$ 181,761	\$ -
Baseball Field Improvements	\$ 1,920,904	\$ 1,920,904	\$ -	\$ 1,920,904	\$ -
Update/improve Infrastructure (Central Plant Enhancements)	\$ 58,768	\$ 58,768	\$ -	\$ 58,768	\$ -
Swing Space - Parking Lot 5 Expansion	\$ 2,001,369	\$ 2,001,369	\$ -	\$ 2,001,369	\$ -
Swing Space - Gym II Renovation	\$ 124,683	\$ 124,683	\$ -	\$ 124,683	\$ -
Swing Space - Old SEM (Roofing)	\$ 76,467	\$ 76,467	\$ -	\$ 76,467	\$ -
Mass Communications & Security Systems Upgrade (Safety Film)	\$ 145,772	\$ 145,772	\$ -	\$ 145,772	\$ -
Mass Communications & Security Systems Upgrade (Door Replacement)	\$ 50,898	\$ 50,898	\$ -	\$ 50,898	\$ -
LLRC Secondary Data center - Phase II	\$ 473,716	\$ 473,716	\$ -	\$ 473,716	\$ -
Campus-Wide Security Systems Upgrade (Phase 1)	\$ 313,541	\$ 313,541	\$ -	\$ 313,541	\$ -
SUB TOTAL	\$ 226,921,200	\$ 229,921,200	\$ 3,000,000	\$ 126,369,609	\$ 103,551,591

1. BTR 2024-043-U-P CC MJ from Swing Space -Fine Arts to Planning CC (Non-Project Specific) Project. SS-FA Project is complete.

2. BTR 2024-044-U-P CC MJ from Holding Account to Planning CC (Non-Project Specific).

3. BTR 2024-046 CC MJ U-P from Update/Improve Infrastructure (IT) to Update/Improve Infrastructure umbrella project.

4. BTR 2025-049 CC MJ from New Veterans Resource Center & Student Activities Expansion to Planning-CC (Non Project Specific) Project. New VRC Project is financially complete.

** Denotes projects with additional State funds in budget- Refer to project page on COC Report for additional details

CURRENT PROJECTS

PROJECT BUDGET/VARIANCE REPORT—FULLERTON

CURRENT PROJECTS	Measure J Budget APR FY 2023-24	Measure J Budget JUL FY 2024-25	Variance	Measure J Expenses Thru JUL 2024	Balance
Renovate Buildings 300 **	\$ 22,982,000	\$ 22,982,000	\$ -	\$ 3,096,974	\$ 19,885,026
New M & O Building	\$ 6,399,604	\$ 6,399,604	\$ -	\$ 1,438,679	\$ 4,960,925
Chapman / Newell Instructional Building	\$ 28,302,917	\$ 28,302,917	\$ -	\$ 7,955,542	\$ 20,347,375
New Performing Arts Complex—Demolish Buildings 1100 and 1300**	\$ 78,884,034	\$ 78,884,034	\$ -	\$ 2,113,298	\$ 76,770,736
Wilshire Chiller Plant Relocation	\$ 13,645,248	\$ 13,645,248	\$ -	\$ 1,773,233	\$ 11,872,015
Athletic Field Improvements	\$ 7,000,000	\$ 7,000,000	\$ -	\$ -	\$ 7,000,000
New Welcome Center & Lot C West	\$ 39,000,000	\$ 39,000,000	\$ -	\$ -	\$ 39,000,000
New Horticulture/Lab School/STEM Lab	\$ 25,167,636	\$ 25,167,636	\$ -	\$ -	\$ 25,167,636
Update/improve Infrastructure	\$ 15,751,618	\$ 15,751,618	\$ -	\$ -	\$ 15,751,618
Swing Space - New M&O	\$ 150,000	\$ 150,000	\$ -	\$ 114,906	\$ 35,094
New Parking Structure	\$ 11,219,260	\$ 11,219,260	\$ -	\$ -	\$ 11,219,260
Planning (Non Project Specific)	\$ 1,287,038	\$ 1,287,038	\$ -	\$ 361,172	\$ 925,866
COMPLETED PROJECTS					
Update/improve Infrastructure (IT)	\$ 7,571,018	\$ 7,571,018	\$ -	\$ 4,644,076	\$ 2,926,942
New Instructional Building	\$ 50,143,158	\$ 50,139,383	\$ (3,775)	\$ 50,139,383	\$ -
Central Plant Replacement & Expansion	\$ 9,000,521	\$ 9,004,296	\$ 3,775	\$ 9,004,296	\$ -
Greenhouse Replacement	\$ 398,664	\$ 398,664	\$ -	\$ 398,664	\$ -
Update/Improve Infrastructure (IT - Instructional Bldg.)	\$ 278,982	\$ 278,982	\$ -	\$ 278,982	\$ -
Update/Improve Infrastructure (Bldg. 300-500 Sewer Line)	\$ 444,702	\$ 444,702	\$ -	\$ 444,702	\$ -
SUB TOTAL	\$ 317,626,400	\$ 317,626,400	\$ -	\$ 81,763,907	\$ 235,862,493

1. BTR 2025-047-U-P MJ from New IB Pr. to Central Plant Replacement & Expansion Pr. due to reconciliation to show the correct Fund in Twining Consulting Inv.10149R

** Denotes projects with additional State funds in budget- Refer to project page on COC Report for additional details

CURRENT PROJECTS

PROJECT BUDGET/VARIANCE REPORT—ANAHEIM

CURRENT PROJECTS	Measure J Budget APR FY 2023-24	Measure J Budget JUL FY 2024-25	Variance	Measure J Expenses Thru JUL 2024	Balance
Swing Space Hotel, Restaurant, and Culinary Arts	\$ 2,500,000	\$ 2,500,000	\$ -	\$ 1,675,418	\$ 824,582
Anaheim Campus Tower First Floor Life/Safety Renovation **	\$ 2,560,440	\$ 2,560,440	\$ -	\$ 447,751	\$ 2,112,689
Develop Interior and Exterior Signage	\$ 1,087,431	\$ 1,087,431	\$ -	\$ 218,629	\$ 868,802
Restore East Parking Lot	\$ 1,622,560	\$ 1,622,560	\$ -	\$ -	\$ 1,622,560
Exterior Green Community Space Enhancement	\$ 569,000 2	\$ 1,569,000	\$ 1,000,000	\$ -	\$ 1,569,000
2nd Floor Lobby Remodel	\$ 813,000	\$ 813,000	\$ -	\$ -	\$ 813,000
Upper Deck Enhancements	\$ 309,901	\$ 309,901	\$ -	\$ -	\$ 309,901
1st. Floor Remodel Student Center and Classrooms	\$ 2,352,720	\$ 2,352,720	\$ -	\$ -	\$ 2,352,720
Pedestrian and Vehicular Traffic Flow	\$ 2,329,000	\$ 2,329,000	\$ -	\$ -	\$ 2,329,000
4th Floor Improvements	\$ 218,000	\$ 218,000	\$ -	\$ -	\$ 218,000
Outdoor Patio Remodel	\$ 1,382,500	\$ 1,382,500	\$ -	\$ 25,358	\$ 1,357,142
Holding Account	\$ 4,000,000	\$ -	\$ (4,000,000)	\$ -	\$ -
Update/improve Infrastructure	3	\$ 224,938	\$ 224,938	\$ -	\$ 224,938
Planning (Non Project Specific)	\$ 1,440,000	\$ 1,440,000	\$ -	\$ 16,315	\$ 1,423,685
COMPLETED PROJECTS					
Update/improve Infrastructure (IT)	\$ 1,000,000 3	\$ 775,062	\$ (224,938)	\$ 775,062	\$ -
Update/improve Infrastructure (Swing Space-IH)	\$ 669,290	\$ 669,290	\$ -	\$ 669,290	\$ -
Swing Space Projects/ Interim Housing	\$ 1,600,000	\$ 1,600,000	\$ -	\$ 1,172,857	\$ 427,143
Update/Improve Infrastructure (Secondary MDF)	\$ 97,250	\$ 97,250	\$ -	\$ 97,250	\$ -
7th and 10th Floors Buildout	\$ 915,972	\$ 915,972	\$ -	\$ 915,972	\$ -
5th Floor CTE & 2nd Floor Room 215	\$ 640,736	\$ 640,736	\$ -	\$ 640,736	\$ -
SUB TOTAL	\$ 26,107,800	\$ 23,107,800	\$ (3,000,000)	\$ 6,654,637	\$ 16,453,163

1. BTR 2024-044-U-P CC MJ from Holding Account to Planning CC (Non-Project Specific).

2. BTR 2024-045-U-P AC MJ from Holding Account to Exterior Green Community Enhancement.

3. BTR 2024-046-U-P AC MJ from Update/Improve Infrastructure (IT) to Update Improve Infrastructure Project.

** Denotes projects with additional State funds in budget- Refer to project page on COC Report for additional details

PROJECT BUDGET/VARIANCE REPORT—DISTRICT

DISTRICT WIDE EXPENSE	Measure J Budget APR FY 2023-24	Measure J Budget JUL FY 2024-25	Variance	Measure J Expenses Thru JUL 2024*	Balance
Program Management Fees	\$ 20,000,000	\$ 20,000,000	\$ -	\$ 10,444,242	\$ 9,555,758
Bond Issuance Cost	\$ 3,544,600	\$ 3,544,600	\$ -	\$ 2,048,689	\$ 1,495,911
SUB TOTAL	\$ 23,544,600	\$ 23,544,600	\$ -	\$ 12,492,931	\$ 11,051,669

* Actual June 2024 Expenses will be reflected on next quarter COC Report



	August				September				October				Comments	
	6	13	20	27	3	10	17	24	1	8	15	22	29	
GENERAL														
NOCEDD Board Meetings														August 27th, September 10th, 24th, and October 8th, 22nd (Anaheim Union HS District Board Room)
COC Meetings														September 4th (In Person Meeting at Fullerton Campus)
Bond Program Management Team Meetings														August 20th, September 17th, October 15th (meeting held via Zoom)
PLANNING														
FULLERTON														
Athletic Field Improvements														In Progress
DESIGN PHASE														
CYPRESS														
Softball Field Renovations														
Schematic Design Revision to Align with Project Budget														In Progress
Design Development														Upcoming Mid-September
DSA PHASE & AGENCY REVIEW														
BIDDING														
ANAHEIM														
Outdoor Patio Remodel														
Bid Advertisement														Upcoming Early September
Bid Due														Upcoming Early September
Contractor selection														Upcoming Late September
Authorization to entering to contract														Upcoming Late September
BAI														
Develop Interior and Exterior Signage														
Larger Marquee and Larger Signage														Upcoming Mid-August
FULLERTON														
New Performing Arts Complex														Upcoming Late August
Bidding Advertisement														Upcoming Early October
Job Walk														Upcoming Early October
RFI Due														
PRE-CONSTRUCTION PHASE														
Outdoor Patio Remodel														Upcoming Late September
CONSTRUCTION PHASE														
ANAHEIM														
Outdoor Patio Remodel														
NTP														Upcoming Late September
Construction														Upcoming Late September
Anaheim Tower First Floor Life/Safety Renovation														
Exterior Wall Modifications														In Progress
Area 3: Expansion Joint (RedLine)														In Progress
Area 2: Expansion Joint (RedLine) and Leak Test														In Progress
Area 1: Water Proofing, Expansion Joint (RedLine), Leak Test														In Progress
Asphalt coating and striping														Upcoming Early September
Flower Bed Modifications: Street Metal Cans														In Progress
Restroom Additions: Plumbing, Frame Walls, and Doors														In Progress
Room Repairs: Demo Drywall, Gypsum Board, Frames														In Progress
Commissioning														Upcoming Late September
Punch List / Final Inspection														Upcoming Late September
Develop Interior and Exterior Signage														
Construction Canopy														In Progress (Canopy Signage)
Construction Larger Marquee and Larger Signage														Upcoming Mid-September

PENDING UPDATE - September 90-Day Schedule

41



PENDING UPDATE - September 90-Day Schedule

Thank you!

Next Meeting: December 4, 2024

Location: Cypress College

CCplex, Room TBD