



March 2025

1

Capital Projects Report to the

Citizens' Oversight Committee

MAAS

Date 03/05/2025

Construction Industry - Economic Pulse

Regional Headwinds


- Palisades and Eaton Fires
 - Construction labor, materials, and contractor shortage due to high demand as reconstruction efforts start and continue from late 2025 through 2027
 - Utility personnel availability impacts
- Recent Import Tariffs
 - Canada and Mexico: 25 Percent tax on goods - Starting in March Pending Additional Negotiations
 - China: 10 percent tax on goods - In Effect
 - World-Wide: Tariffs on all steel and aluminum imports into US (no exemptions) - deferred to March 12
 - Affected products include: construction structural steel, aluminum products, construction lumber, electronics, furniture, etc



Construction Industry - Economic Pulse

Project Phase	Planning / Design	Bidding / Procurement	Construction
Mitigation Measures for Consideration	Specification of domestically-made products as possible.	Set up additional contingency within the project budget to offset potential cost increases from subcontractors.	Early procurement with consideration for long term storage costs.
	Consider alternate materials or finishes that meet programming requirements and durability.	Consider allowances earmarking funds for cost escalation in agreements to be returned to District if not used.	If local equipment or materials are back-ordered, consider the cost-benefit analysis of waiting for deliveries vs. the cost of the tariff on item availability and project schedule.
	Consider year-to-year escalation scenarios of 8% for upcoming construction projects	Consider year-to-year escalation scenarios of 8% for upcoming construction projects.	Review of potential impacts with construction managers & general contractors.
		Consider substitution of item on project specifications for better priced or readily available items following consultation with AOR.	Expedite submittals that could see impacts from import tariffs for processing and approval for procurement.

Q4 2024 Cash Flow Projection

Cash Flow Projections - Q4 2024

Series	Projected Release Timeframe	Series	Projected Release Timeframe
A (\$100M)	May 2016 α	C (\$150M)	September 2022 α
B (\$150M)	July 2020 α	D (\$174M)	October 2026 

α Denotes actual sale date  Earlier Sale Date compared to Previous Quarter  Later Sale Date compared to Previous Quarter

Current IPP and FPP Status

6

Cypress	Fullerton	Anaheim
Fine Arts Building Renovation (FPP) Approved	New Performing Arts Complex (FPP) Approved	Anaheim Campus Tower First Floor Life/Safety Renovation (FPP) Close-Out
	Renovate Building 300 (FPP) Approved	
	STEM Vocational Center (FPP) Re-submittal Approved	
	New Welcome Center (IPP) Submittal - Pending	

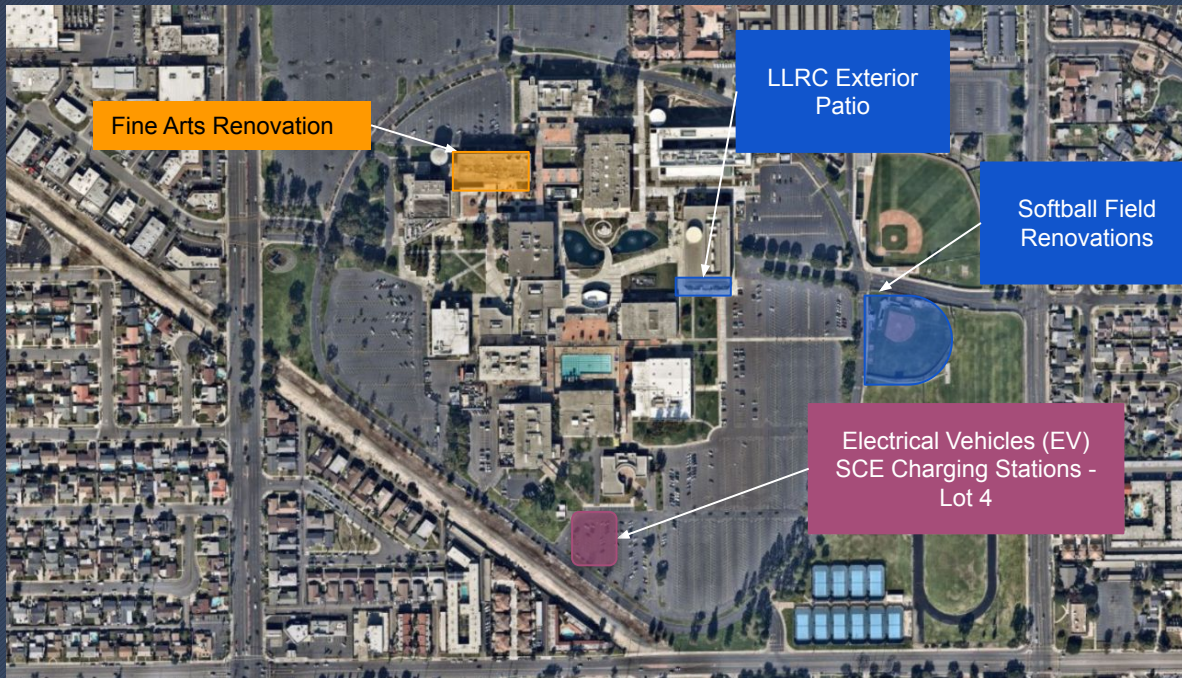
Questions

PROJECTS IN PLANNING, PROGRAMMING, DESIGN, AND CONSTRUCTION

8

- Campus Site Plans
- Project Status Reports

Aerial View - Cypress Campus



Phase	
Planning	
Design	
Bidding	
Construction / Implementation	
Close-Out	

Updates on campus projects - Cypress College

Fine Arts Building Renovation

Major Activities Completed:

- Seismic underground, shotcrete, and fiber reinforced polymer completed in December
- MEP work under concrete slabs
- Slab on grade pours throughout building
- Air handler unit installation

Major Activities Upcoming or Underway:

- Temporary waterproofing and window activities
- Framing on levels 2 and 3
- MEP overhead rough-in at level 3
- Drywall and insulation installation on level 3
- Multiple change orders presented in February to Board of Trustees for various primes; additional change orders for presentation in March

Project Completion Anticipated in Fall 2026



Fine Arts Building Renovation Construction Progress



Waterproofing on Roof



Completed Concrete Pours

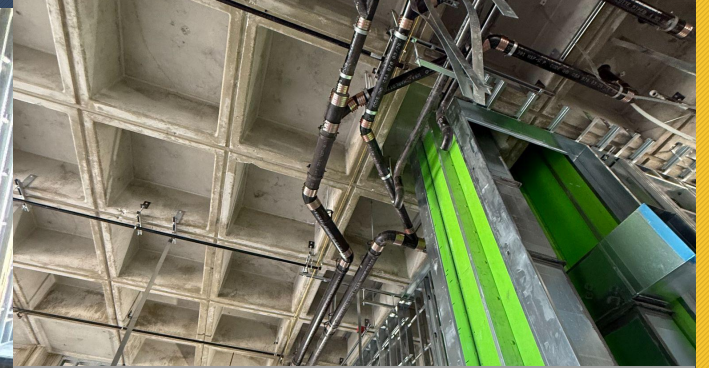


Slab on Grade Concrete Pour Preparation

Fine Arts Building Renovation Construction Progress



Interior Metal Wall Framing



Overhead MEP and Framing



Air Handler Unit Installation

Updates on campus projects - Cypress College

Softball Field Renovations

Major Activities Completed:

- Amendment 1 to increase AOR contract for upcoming seismic improvements
- Sightline study to avoid viewing blockage from the bleachers
- 100% Design Development Drawings

Major Activities Upcoming or Underway:

- Design Development Phase completion and start of Construction Documents in April 2025
- California Geological Survey Submittal
- Additional meetings with Building User Group



Updates on campus projects - Cypress College

Library & Learning Resource Center (LLRC) Exterior Patio

Major Activities Completed:

- Architect of Record Selection
- Topographic Surveying

Major Activities Upcoming or Underway:

- Design kick-off meeting with Building User Group in February 2025



Questions

Aerial View - Fullerton Campus

16



Phase

Planning

Design

Bidding / Procurement

Construction / Implementation

Close-Out

Updates on campus projects - Fullerton College

Renovate Building 300

Major Activities Completed:

- DSA approval of FRP submittal received on January 10
- Micropile activities concluded January 8 at all areas
- Basement slab pour for pile caps

Major Activities Upcoming or Underway:

- FRP placement on levels 1 & 2; CCD approvals pending
- Wall framing, layout, and door frame installation
- Pile cap activities -formwork, rebar and dowel placement
- Exterior stair reconstruction; CCD approval pending
- MEP work on the second floor and basement; the same activities passed the 50 percent installation mark on the first floor

Construction Completion Anticipated November 2025



Renovate Building 300 Construction Progress



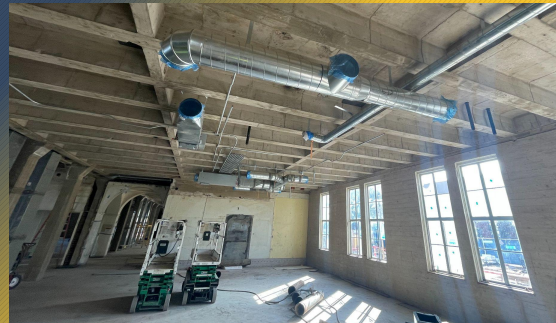
Stairwell Reconstruction after Pile Drilling



Pile Cap Concrete Pour



First-Floor FRP Application



Ductwork Installation



Building Facade and Window Restoration

Updates on campus projects - Fullerton College

New M&O Building

Major Activities Completed:

- GFRC application and windows installed on facade
- Roof activities including: PVC roof, high density decking, flat and sloped roof installation
- Interior wall framing
- Scaffolding removal

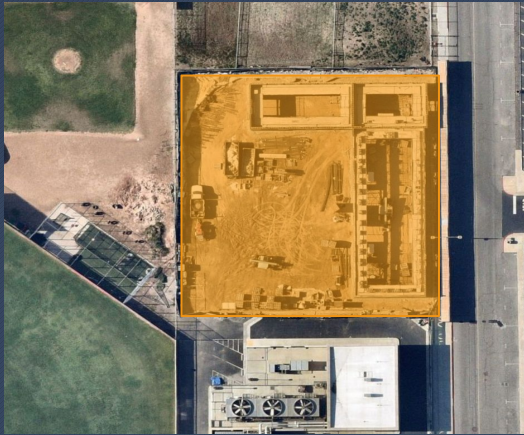
Major Activities Upcoming or Underway:

- Stucco finish to exterior building facade
- Clay tile installation on roof
- Ceiling and drywall insulation and installation on interior walls
- Cabling and finishes in the intermediate distribution frame and building distribution frame rooms

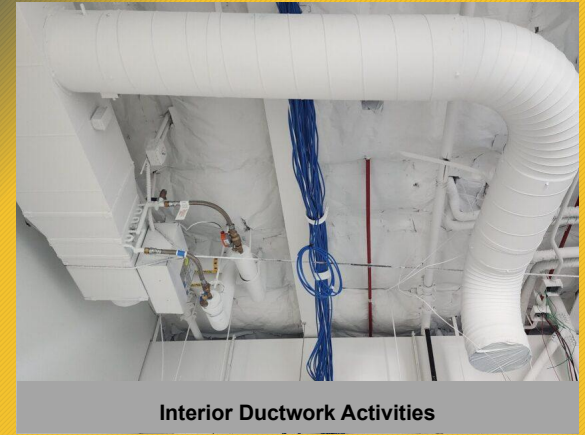
Construction Completion Anticipated April 10, 2025.



New M&O Building Construction Progress



Exterior Facade Activities



Interior Ductwork Activities



Elevator Installation Activities



Interior Painting Activities



Exterior Facade Activities

Updates on campus projects - Fullerton College

Student Support Center

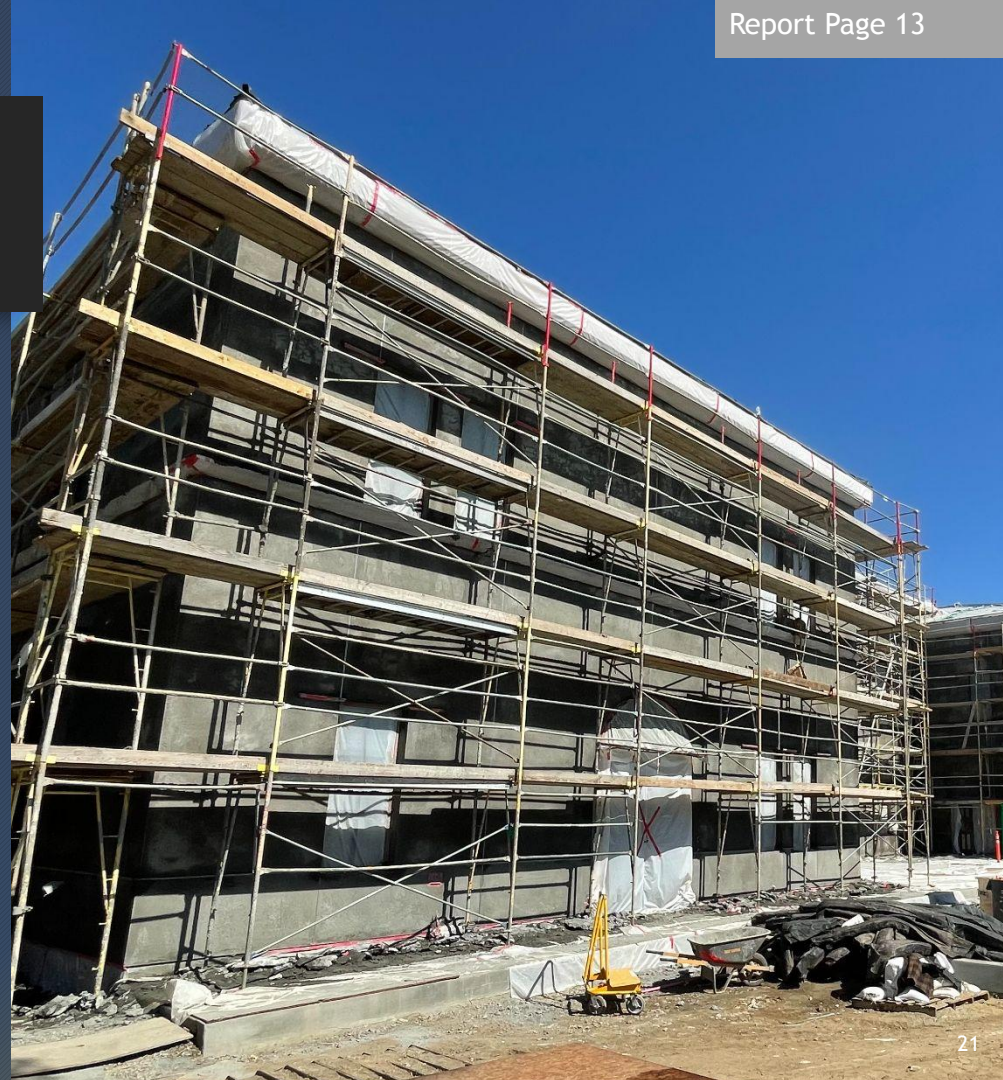
Major Activities Completed:

- DSA approval of skylight submittal and metal supports at roof eaves
- Name change to Student Support Center
- Exterior Doors
- Window activities and glazing
- Concrete Pours

Major Activities Upcoming or Underway:

- Top Cast installation, scratch and brown coat
- Ceiling and drywall installation
- Partition wall layout in progress in the restrooms
- Elevator cab assembly and placement
- Flooring and painting activities

Project Completion Anticipated in April 25, 2025.



Student Support Center Construction Progress



Building Envelope and Sheathing Activities



Door Placement



Elevator Installation Activities



Cabinetry Installation



Building Envelope and Facade Activities

Updates on campus projects - Fullerton College

New Performing Arts Complex & Demolition Buildings 1100 and 1300

Major Activities Completed:

- 3 bid proposals were received by January 9 and reviewed
- Board of Trustees Approval for SJ Amoroso as general contractor
- Budget augmentation to approximately \$136.9M

Major Activities Upcoming or Underway:

- IOR/LOR selection process
- Submittal to the State Chancellor's Office for final state approval prior to issuing a Notice to Proceed

Predicated on State Chancellor's Office approval, Construction to Start in May 2025



Updates on campus projects - Fullerton College

Wilshire Chiller Plant Relocation

Major Activities Completed:

- Telecom reroute,
- Electrical reroute and Wilshire Complex shutdown
- All utility vaults and conduits set in place
- Off-site utilities connection made under Lemon Street and Chapman Avenue

Major Activities Upcoming or Underway:

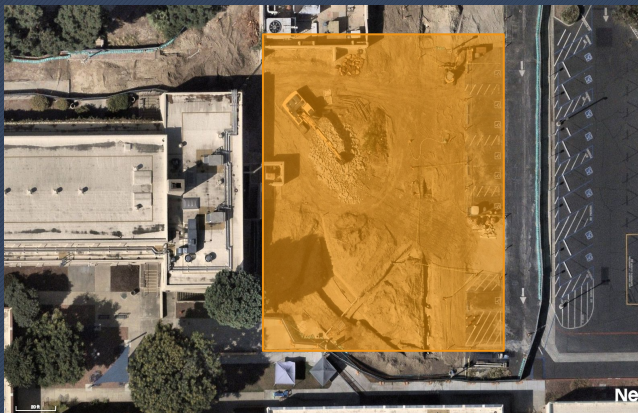
- Demolition of unforeseen conditions
- SCE design approval
- Fire water reroute
- Concrete Pours
- Building foundation work upcoming
- CMU wall installation upcoming in June

Project Completion Anticipated in December 2025

Date 03/05/2025



Wilshire Chiller Plant Relocation Construction Progress



Electrical Conduit Placement



Trenching, Conduit, Electrical Vault Placement and Slurry



Backfilling Activities

Updates on campus projects - Fullerton College

New Horticulture/Lab School/STEM Lab

Major Activities Completed:

- Determination made by Fullerton President's Advisory Council for project to proceed

Major Activities Upcoming or Underway:

- Campus Project Team assessment of original building programming for the Building User Group's current needs
- Preliminary allocation of state funding for preliminary plans at approximately \$1.9M in FY 2025-26

Design Phase Anticipated to Start in July 2025



Updates on campus projects - Fullerton College

27

Athletic Field Improvements

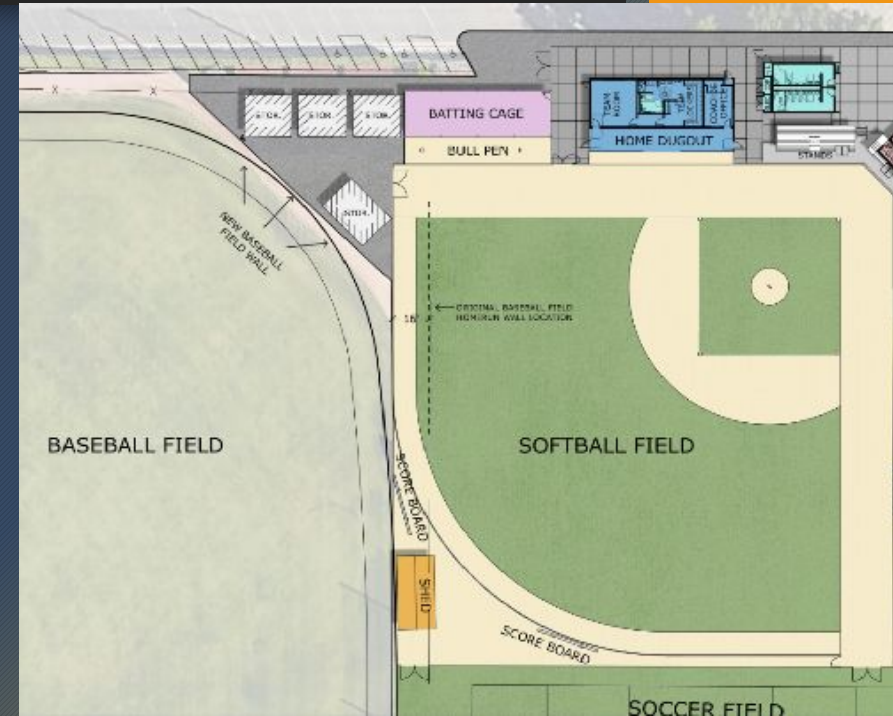
Major Activities Completed:

- Cost saving measures were conducted by Design Team
- Agreement on preliminary options for the future scope of work between Campus Leadership and Building User Group on February 3

Major Activities Upcoming or Underway:

- RFP process for Architect of Record selection
- Project name change to Softball Field Improvements
-

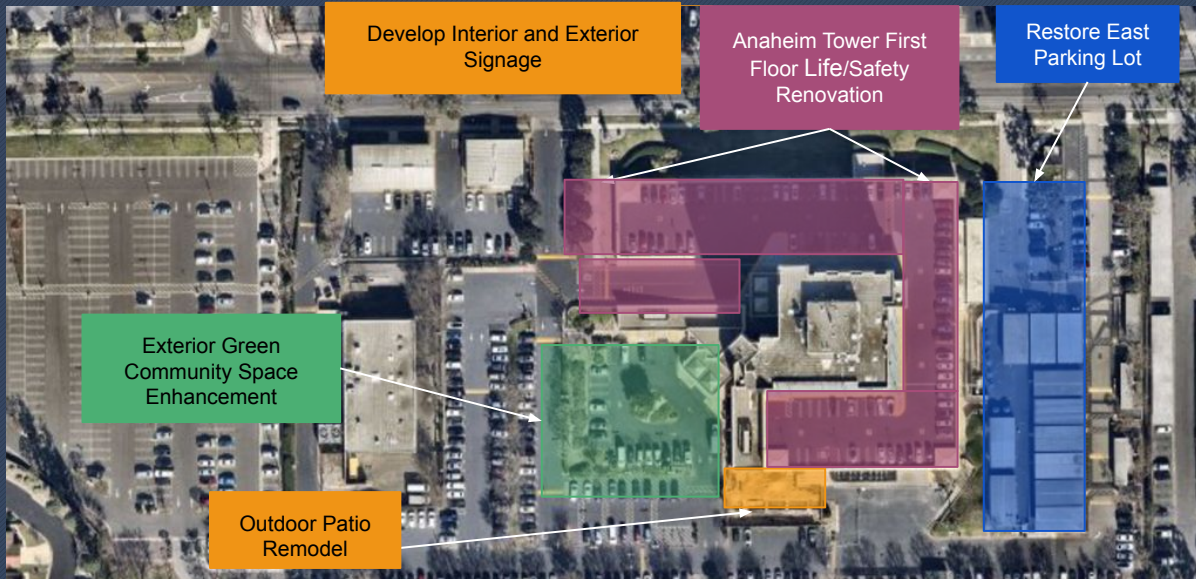
Project Anticipated to Enter Design Phase in May 2025



Questions

Aerial View - Anaheim Campus

29



Phase	
Planning	Green
Design	Blue
Bidding / Procurement	Yellow
Construction / Implementation	Orange
Close-Out	Purple

Updates on campus projects - Anaheim Campus

30

Develop Interior and Exterior Signage

Major Activities Completed:

- Drawings for all types of signage were submitted and approved by Architect of Record
- Color samples for canopy signage were approved
- Support for upcoming decorative metal panels on parapet wall

Major Activities Underway or Upcoming:

- Decorative metal panel installation for parapet wall signage
- Production of the marquee commenced at the end of January; demolition and installation anticipated in April
- Canopy letter installation
- Interior signage improvements are pending

Project Completion Anticipated in May 2025



Updates on campus projects - Anaheim Campus

Anaheim Tower First Floor Life/Safety Renovation

Major Activities Completed:

- Punch-list items completed

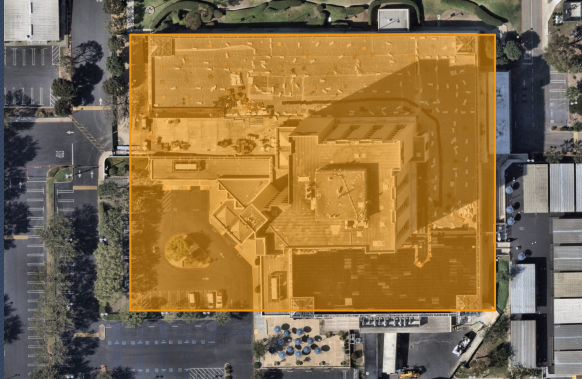
Major Activities Underway or Upcoming:

- Financial and CCCCCO close-out
- DSA certification

Final Project Completion Anticipated in March 2025



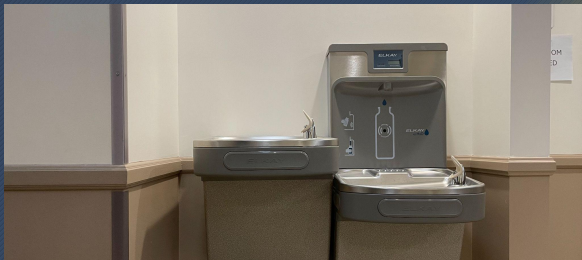
Anaheim Tower First Floor Life/Safety Renovation Construction Progress



Completed Parking Deck



Completed Retaining Wall



Completed Water Fountains



Finished All-Gender Restroom



Water Intrusion Repairs Completed

Updates on campus projects - Anaheim Campus

Outdoor Patio Remodel

Major Activities Completed:

- Demolition of old patio
- Footing excavations for future canopy placement
- Reinforcement bar placement
- Foundation formwork and concrete foundation pours

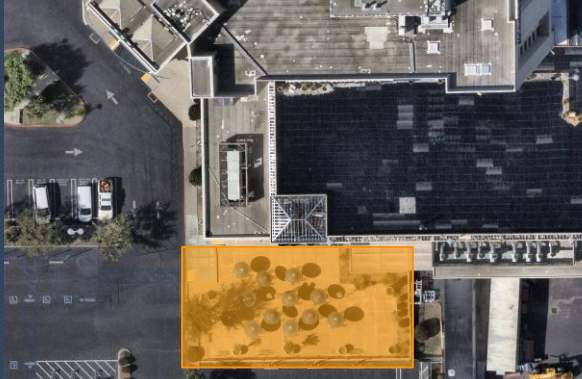
Major Activities Underway or Upcoming:

- Elevation and threshold adjustments at the south door for the Culinary Arts
- Canopy deliveries anticipated in March 2025 followed by installation

Project Completion Anticipated in June 2025



Outdoor Patio Remodel Progress



Footing Excavation



Rebar Placement, Formwork and Concrete Pours for Canopy Footings

Updates on campus projects - Anaheim Campus

35

Exterior Green Community Space Enhancement

Major Activities Completed:

- Budget assessment
- Initial meetings between the Architect of Record and Building User Group to determine the preliminary scope of work

Major Activities Underway or Upcoming:

- A meeting is planned to assess the schematic design with AOR, Campus Project Team and Building User Group in mid-March.

Design Phase Anticipated to Start in March 2025



Updates on campus projects - Anaheim Campus

36

Restore East Parking Lot

Major Activities Completed:

- PBK Architects selected and approved as Architect of Record

Major Activities Underway or Upcoming:

- Planning meetings between the Campus Project Team and Architect of Record

Design Phase Anticipated to Start in April 2025



Questions

Project Safety Report

38

- Summary of safety incidents for all major construction projects

Classification	First Aid	Safety Stand Down	Near Miss	Equipment	Recordable	Incidents This Quarter	Total Incidents To Date
Cypress College							
Fine Arts Renovation (Sundt Construction)	1	0	1	0	0	2	6
EV Charging Stations (Asplundh Construction)	0	0	0	0	0	0	0
Fullerton College							
Renovate Building 300 (Icon West)	0	0	0	0	0	0	0
Student Support Center and New M&O Building (BNBuilders)	0	0	0	0	0	0	4
Wilshire Chiller Plant Relocation (PPC)	0	0	0	0	0	0	0
NOCE-Anaheim Campus							
Anaheim Tower First Floor Life/Safety Renovation (PCL Construction)	0	0	0	0	0	0	0
Outdoor Patio Remodel	0	0	0	0	0	0	0

Financial Review

40

- Capital Projects Update
- Estimated Project Budgets
- 90-Day Look Ahead Schedule

**North Orange County Community College District
Measure J
Capital Projects Update
As of January 31, 2025**

Bond Authorization:

Bond Authorization	574,000,000	100.00%
Bonds Sold - Series A + B + C	400,000,000	69.69%
Available Principal Amount of Bonds	174,000,000	30.31%

Bond Funding Sources (Budget):

		Actual Received	Remaining Balance
Bond Authorization	574,000,000	400,000,000	174,000,000
Estimated Interest Earning*	31,000,000	27,440,857	3,559,143
Total Estimated:	605,000,000	427,440,857	177,559,143
Less Cost of Interest	800,000	595,206	204,794
Total Available for allocation:	604,200,000	426,845,651	177,354,349

Cost Status:

Campus	Total Budget	%	Actual Expenses to Date	Remaining Balance
Anaheim Campus	23,377,800	3.87%	8,462,675	14,915,125
Cypress Campus	231,451,200	38.31%	130,806,856	100,644,344
Fullerton Campus	321,126,400	53.15%	95,025,455	226,100,945
District Expenses				
• Program Management	20,000,000	3.31%	11,127,087	8,872,913
• Bond Issuance Cost	3,544,600	0.59%	2,048,689	1,495,911
• Holding Account**	4,700,000	0.78%	-	4,700,000
Totals	604,200,000	100.00%	247,470,762	356,729,238

* Estimated Interest Earnings amount is increased to total \$31M

** Holding Account was increased by \$4.2M for upcoming interest earnings

CURRENT PROJECTS

PROJECT BUDGET/VARIANCE REPORT—CYPRESS

42

CURRENT PROJECTS	Measure J Budget OCT FY 2024-25	Measure J Budget JAN FY 2024-25	Variance	Measure J Expenses JAN FY 2024-25	Balance
Fine Arts Building Renovation**	\$ 56,400,871	\$ 56,400,871	\$ -	\$ 8,213,737	\$ 48,187,134
Softball Field Renovations	\$ 4,000,000	\$ 4,000,000	\$ -	\$ 71,930	\$ 3,928,070
Update/improve Infrastructure	\$ 5,162,876	\$ 5,162,876	\$ -	\$ -	\$ 5,162,876
LLRC Exterior Patio	\$ 1,287,000	\$ 1,287,000	\$ -	\$ 13,800	\$ 1,273,200
Central Plant Upgrade	\$ 4,000,000	\$ 4,000,000	\$ -	\$ -	\$ 4,000,000
Mass Communications & Security Systems Upgrade	\$ 1,942,628	\$ 1,942,628	\$ -	\$ -	\$ 1,942,628
Pool Restoration and Upgrade	\$ 5,500,000	\$ 5,500,000	\$ -	\$ -	\$ 5,500,000
Health Sciences Tech Ed III Renovation	\$ 26,126,990	\$ 26,126,990	\$ -	\$ -	\$ 26,126,990
EV SCE Charging Stations	\$ 492,000	\$ 492,000	\$ -	\$ 381,144	\$ 110,856
Planning (Non Project Specific)	\$ 4,875,125	\$ 4,875,125	\$ -	\$ 546,378	\$ 4,328,747
COMPLETED PROJECTS					
Swing Space Fine Arts (Old SEM)	\$ 3,748,140	\$ 3,748,140	\$ -	\$ 3,748,140	\$ -
Update/Improve Infrastructure (IT)	\$ 3,421,310	\$ 3,421,310	\$ -	\$ 3,421,310	\$ -
New Science, Engineering, and Mathematics Building	\$ 92,095,385	\$ 92,095,385	\$ -	\$ 92,011,542	\$ 83,843
Update/Improve Infrastructure (New SEM)	\$ 2,805,131	\$ 2,805,131	\$ -	\$ 2,805,131	\$ -
Mass Communications & Security Systems Upgrade (New SEM)	\$ 389,367	\$ 389,367	\$ -	\$ 389,367	\$ -
Update/Improve Infrastructure (IT - New SEM)	\$ 645,883	\$ 645,883	\$ -	\$ 645,883	\$ -
New Veterans' Resource Center & Student Activities Center Expansion	\$ 12,071,766	\$ 12,071,766	\$ -	\$ 12,071,766	\$ -
Update/Improve Infrastructure (VRC/SAC)	\$ 1,077,912	\$ 1,077,912	\$ -	\$ 1,077,912	\$ -
Mass Communications & Security Systems Upgrade (VRC/SAC)	\$ 60,938	\$ 60,938	\$ -	\$ 60,938	\$ -
Update/Improve Infrastructure (IT - VRC/SAC)	\$ 181,761	\$ 181,761	\$ -	\$ 181,761	\$ -
Baseball Field Improvements	\$ 1,920,904	\$ 1,920,904	\$ -	\$ 1,920,904	\$ -
Update/Improve Infrastructure (Central Plant Enhancements)	\$ 58,768	\$ 58,768	\$ -	\$ 58,768	\$ -
Swing Space - Parking Lot 5 Expansion	\$ 2,001,369	\$ 2,001,369	\$ -	\$ 2,001,369	\$ -
Swing Space - Gym II Renovation	\$ 124,683	\$ 124,683	\$ -	\$ 124,683	\$ -
Swing Space - Old SEM (Roofing)	\$ 76,467	\$ 76,467	\$ -	\$ 76,467	\$ -
Mass Communications & Security Systems Upgrade (Safety Film)	\$ 145,772	\$ 145,772	\$ -	\$ 145,772	\$ -
Mass Communications & Security Systems Upgrade (Door Replacement)	\$ 50,898	\$ 50,898	\$ -	\$ 50,898	\$ -
LLRC Secondary Data Center - Phase II	\$ 473,716	\$ 473,716	\$ -	\$ 473,716	\$ -
Campus-Wide Security Systems Upgrade (Phase 1)	\$ 313,541	\$ 313,541	\$ -	\$ 313,541	\$ -
SUB TOTAL	\$ 231,451,200	\$ 231,451,200	\$ -	\$ 130,806,856	\$ 100,644,344

** Denotes projects with additional State funds in budget- Refer to project page on COC Report for additional details

CURRENT PROJECTS

PROJECT BUDGET/VARIANCE REPORT—FULLERTON

CURRENT PROJECTS	Measure J Budget OCT FY 2024-25	Measure J Budget JAN FY 2024-25	Variance	Measure J Expenses JAN FY 2024-25	Balance
Renovate Building 300 **	\$ 22,982,000	\$ 22,982,000	\$ -	\$ 3,889,051	\$ 19,092,949
New M & O Building	\$ 6,399,604	\$ 6,399,604	\$ -	\$ 1,566,720	\$ 4,832,884
Student Support Center	\$ 28,302,917	² \$ 28,302,917	\$ -	\$ 17,012,455	\$ 11,290,462
New Performing Arts Complex—Demolish Buildings 1100 and 1300**	\$ 78,884,034	³ \$ 92,005,166	\$ 13,121,132	\$ 2,344,656	\$ 89,660,510
Wilshire Chiller Plant Relocation	\$ 13,645,248	¹ \$ 14,772,894	\$ 1,127,646	\$ 5,076,723	\$ 9,696,171
Athletic Field Improvements	\$ 7,000,000	\$ 7,000,000	\$ -	\$ 28,500	\$ 6,971,500
New Welcome Center & Lot C West	\$ 39,000,000	\$ 39,000,000	\$ -	\$ -	\$ 39,000,000
New Horticulture/Lab School/STEM Lab**	\$ 25,167,636	\$ 25,167,636	\$ -	\$ -	\$ 25,167,636
Update/Improve Infrastructure	\$ 15,751,618	³ \$ 10,630,486	\$ (5,121,132)	\$ -	\$ 10,630,486
Update/Improve Infrastructure (SS - New M&O)	\$ 150,000	\$ 150,000	\$ -	\$ 114,906	\$ 35,094
New Parking Structure	\$ 11,219,260	³ \$ 6,219,260	\$ (5,000,000)	\$ -	\$ 6,219,260
Planning (Non Project Specific)	\$ 4,787,038	^{1,3} \$ 659,392	\$ (4,127,646)	\$ 369,672	\$ 289,720
COMPLETED PROJECTS					
Update/Improve Infrastructure (IT)	\$ 7,571,018	\$ 7,571,018	\$ -	\$ 4,356,745	\$ 3,214,273
New Instructional Building	\$ 50,139,383	\$ 50,139,383	\$ -	\$ 50,139,383	\$ -
Central Plant Replacement & Expansion	\$ 9,004,296	\$ 9,004,296	\$ -	\$ 9,004,296	\$ -
Greenhouse Replacement	\$ 398,664	\$ 398,664	\$ -	\$ 398,664	\$ -
Update/Improve Infrastructure (IT - Instructional Bldg.)	\$ 278,982	\$ 278,982	\$ -	\$ 278,982	\$ -
Update/Improve Infrastructure (Bldg. 300-500 Sewer Line)	\$ 444,702	\$ 444,702	\$ -	\$ 444,702	\$ -
SUB TOTAL	\$ 321,126,400	\$ 321,126,400	\$ -	\$ 95,025,455	\$ 226,100,945

1. Budget Transfer Request 2025-053 FC MJ from Planning FC (Non Project Specific) project to Wilshire Chiller Plant Relocation Project.

2. Budget Transfer Request 2025-054 FC Project name change from Chapman/Newell Instructional Building to Student Support Center.

3. Budget Transfer Request 2025-056 FC MJ from Planning FC (Non Project Specific). New Parking Structure & FC Update/Improve Infrastructure to FC New Performing Arts Complex.

** Denotes projects with additional State funds in budget- Refer to project page on COC Report for additional details

CURRENT PROJECTS

PROJECT BUDGET/VARIANCE REPORT—ANAHEIM

CURRENT PROJECTS	Measure J Budget OCT FY 2024-25	Measure J Budget JAN FY 2024-25	Variance	Measure J Expenses JAN FY 2024-25	Balance
Swing Space Hotel, Restaurant, and Culinary Arts	\$ 2,500,000	\$ 2,500,000	\$ -	\$ 1,921,518	\$ 578,482
Anaheim Campus Tower First Floor Life/Safety Renovation **	\$ 2,560,440	\$ 2,560,440	\$ -	\$ 1,694,100	\$ 866,340
Develop Interior and Exterior Signage	\$ 1,087,431	\$ 1,087,431	\$ -	\$ 228,565	\$ 858,866
Restore East Parking Lot	\$ 1,622,560	\$ 1,622,560	\$ -	\$ -	\$ 1,622,560
Exterior Green Community Space Enhancement	\$ 1,839,000	\$ 1,839,000	\$ -	\$ -	\$ 1,839,000
2nd Floor Lobby Remodel	\$ 813,000	\$ 813,000	\$ -	\$ -	\$ 813,000
Upper Deck Enhancements	\$ 309,901	\$ 309,901	\$ -	\$ -	\$ 309,901
1st. Floor Remodel Student Center and Classrooms	\$ 2,352,720	\$ 2,352,720	\$ -	\$ -	\$ 2,352,720
Pedestrian and Vehicular Traffic Flow	\$ 2,329,000	\$ 2,329,000	\$ -	\$ -	\$ 2,329,000
4th Floor Improvements	\$ 218,000	\$ 218,000	\$ -	\$ -	\$ 218,000
Outdoor Patio Remodel	\$ 1,382,500	\$ 1,382,500	\$ -	\$ 185,328	\$ 1,197,172
Update/improve Infrastructure	\$ 224,938	\$ 224,938	\$ -	\$ -	\$ 224,938
Planning (Non Project Specific)	\$ 1,440,000	\$ 1,440,000	\$ -	\$ 16,315	\$ 1,423,685
COMPLETED PROJECTS					
Update/Improve Infrastructure (IT)	\$ 775,062	\$ 775,062	\$ -	\$ 775,062	\$ -
Update/Improve Infrastructure (Swing Space-IH)	\$ 669,290	\$ 669,290	\$ -	\$ 669,290	\$ -
Swing Space Projects/ Interim Housing	\$ 1,600,000	\$ 1,600,000	\$ -	\$ 1,318,540	\$ 281,460
Update/Improve Infrastructure (Secondary MDF)	\$ 97,250	\$ 97,250	\$ -	\$ 97,250	\$ -
7th and 10th Floors Buildout	\$ 915,972	\$ 915,972	\$ -	\$ 915,972	\$ -
5th Floor CTE & 2nd Floor Room 215	\$ 640,736	\$ 640,736	\$ -	\$ 640,736	\$ -
SUB TOTAL	\$ 23,377,800	\$ 23,377,800	\$ -	\$ 8,462,675	\$ 14,915,125

** Denotes projects with additional State funds in budget- Refer to project page on COC Report for additional details

PROJECT BUDGET/VARIANCE REPORT—DISTRICT

DISTRICT WDE EXPENSE	Measure J Budget OCT FY 2024-25	Measure J Budget JAN FY 2024-25	Variance	Measure J Expenses JAN FY 2024-25	Balance
Program Management Fees	\$ 20,000,000	\$ 20,000,000	\$ -	\$ 11,127,087	\$ 8,872,913
Bond Issuance Cost	\$ 3,544,600	\$ 3,544,600	\$ -	\$ 2,048,689	\$ 1,495,911
Holding Account*	\$ 500,000	\$ 4,700,000	\$ 4,200,000	\$ -	\$ 4,700,000
SUB TOTAL	\$ 23,544,600	\$ 28,244,600	\$ -	\$ 13,175,776	\$ 15,068,824

* Holding Account was increased by \$4.2M for upcoming interest earnings



90-DAY LOOK AHEAD SCHEDULE

(02-01-25 TO 04-30-25)

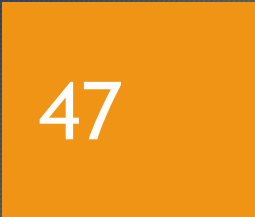
46

	March			April				May				Comments			
	4	11	18	25	1	8	15	22	29	1	8		15	22	29
GENERAL															
NOC CCD Board Meetings															March 11th, 25th; April 8th, 22nd; May 13th, 27th (Anaheim Union HS District Board Room)
COC Meetings															March 5, 2025 (In Person Meeting at Fullerton College)
Bond Program Management Team Meetings															March 18th, April 15th, May 20th (meetings held via Teams)
PLANNING															
Restore East Parking Lot															In Progress (Completion Anticipated in March)
Planning															
DESIGN PHASE															
ANAHEIM															
Exterior Green Community Space Enhancement															In Progress (Meetings between AOR, Campus Project Team, and Building User Group)
Schematic Design															Upcoming (Anticipated in April)
Design Development															Upcoming (Anticipated in April)
Construction Documents															Upcoming (Anticipated in April)
Restore East Parking Lot															Upcoming (Anticipated in April)
Schematic Design															Upcoming (Anticipated in May)
Design Development															
CYPRESS															
LLRC Exterior Patio															In Progress
Schematic Design															Upcoming (Anticipated in April)
Design Development															
Softball Field Renovations															In Progress (Phase is Complete, Feedback is Pending from Building User Group)
Schematic Design															Upcoming (Anticipated in April)
Design Development															
Construction Documents															
DSA PHASE & AGENCY REVIEW															
New Performing Arts Complex															In Progress
California Community Colleges Chancellor's Office Submittal															
BIDDING															
FULLERTON															
Athletic Field Improvements															In Progress
Requests for Proposals for AOR Selection															
New Performing Arts Complex															Complete
Selection Process															Complete
Board Agenda Item for Authorization to Enter into Contract with Prequalified GC															Complete
IOR/LOR RFP Process															In Progress (Interview Process)
PRE-CONSTRUCTION PHASE															
New Performing Arts Complex															Upcoming (Anticipated on May 1, 2025)
Notice to Proceed with Construction															
CONSTRUCTION PHASE															
ANAHEIM															
Outdoor Patio Remodel															Complete
Foundation Work															Complete
Rebar Cage Installation															
Foundation Concrete Work															
Steel Structure															Upcoming (April)
Steel Structure, Roof and Ceiling Work															Upcoming (March)
Kalwall Panel Fabrication, Delivery, and Installation															

The 90 day schedule has been updated since the report's printing date



NORTH ORANGE COUNTY COMMUNITY COLLEGE DISTRICT
CYPRESS - FULLERTON - ANAHEIM (NOCE)
90-DAY LOOK AHEAD SCHEDULE
 (02-01-25 TO 04-30-25)



	March				April				May				Comments		
	4	11	18	25	1	8	15	22	29	1	8	15		22	29
Develop Interior and Exterior Signage															
Fabrication of Canopy Letters & Support															In Progress
Marquee Signage (Production/Fabrication)															In Progress
Marquee Signage (Demolition)															In Progress
Marquee Foundation Construction															Upcoming (April)
Metal Wall Branding Signage Installation															In Progress (Hat Channel Installation Complete, Electrical Rough-In, Metal Panel Installation, Electrical Finish)
CYPRESS															
Fine Arts Building Renovation															
Building Enclosure															
Window Activities															In Progress
Exterior Improvements															
Flashing, Roof PVC System															In Progress (Flashing Installation on the East, North, West, South Ends of Roof)
Kiln Yard															In Progress (Concrete Placement, Form setting, Renovations)
Interior Improvements															
Wall Framing															In Progress (On All Floors at Classrooms, Restrooms, Lobby)
Drywall Installation & Taping															Upcoming (L3 in Classrooms, and Lobby Upcoming April; L2 and L1 Classrooms and Lobby Upcoming in May)
Overhead Mechanical Duct Rough-in															In Progress (On First and Second Floors at Classrooms, Restrooms, Lobby)
In-Wall Mechanical Electrical and Plumbing Installation															In Progress (On All Floors at Classrooms, Restrooms, Lobby)
FULLERTON															
Renovate Building 300															
Superstructure - Structural Improvements															
Close Openings for Former Utilities															In Progress (First Floor)
Pile Caps															In Progress (Pile Casing Removal, Subgrade Compaction, Epoxy Dowel and Rebar Installation, Slab Pour)
Fiber Reinforced Polymer (FRP) Installation															In Progress (Second and First Floors and Pending CCD Approval)
Interior Improvements															
Wall Framing															In Progress (Second Floor; First Floor to Start in mid-March)
Mechanical, Electrical, and Plumbing															In Progress (Second Floor in February; First Floor to start in March)
Drywall Hanging															Upcoming in March (Second Floor in March; First Floor in April)
New M&O Building															
Building Enclosure															
Glass-Fiber Reinforced Concrete (GFRC) Installation															Complete
Top Cast Installation															Complete
Roof Activities															
Sloped Roof															In Progress (Weatherization, Tile Installation, Scaffolding Removal, Downspout Installation)
Interior															
Drywall Installation															Complete (on all levels)
Painting															In Progress (On All Levels at Offices, Restrooms)
Elevator Activities															In Progress (Wire Harness Installation, Elevator Start-Up, and Inspection)
Commissioning															Upcoming (Anticipated to start in April)

The 90 day schedule has been updated since the report's printing date



NORTH ORANGE COUNTY COMMUNITY COLLEGE DISTRICT
CYPRESS - FULLERTON - ANAHEIM (NOCE)
90-DAY LOOK AHEAD SCHEDULE
 (02-01-25 TO 04-30-25)



	March				April				May				Comments	
	4	11	18	25	1	8	15	22	29	1	8	15		22
Student Support Center														
Exterior & Building Enclosure & Site Improvements														
Window and Glazing Installation - All Levels														Complete
Top Cast Application														In Progress (Top Cast Installation to end in February; Scratch, Brown, Finish Coats, and Curing to end in March)
SCE Transformer														In Progress (FRP Transformer Pad, Transformer Installation, Wiring)
Glass-Fiber Reinforced Concrete (GFRC) Façade Installation														In Progress (GFRC Installation to end in February; Scratch, Brown, Finish Coats, and Curing to end in March)
Sidewalk and Street Paving Activities														In Progress (Sidewalk Replacement on Newell St and Street Paving Activities)
Parking Lot Paving (Area 1 and 3 - South)														Upcoming
Roof Activities														
Sloped Roof														In Progress (Scratch, Brown, Finish Coats, Curing and Top Cast Installation to Parapets, Louver Installation)
Flat Roof														In Progress (Skylight Curb Installation at Roof)
Metal Dome														Upcoming
Interior Improvements														
Carpet & Resilient Tile (Both Levels)														In Progress
Concrete Pours														Complete
Elevator Activities														In Progress (Inspection)
Drywall Installation & Taping														In Progress (Second Floor)
Wilshire Chiller Plant Relocation														
Building Demolition and Earthwork														
Sanitary Sewer Demolition														Complete
Unforeseen Conditions (Underground Telecom, Power Relocation)														Complete
Underground Fire Hydrant Water Line														In Progress (Relocation, and Backfill and Compact Trench)
Demolition of Existing Utilities														In Progress
Building Foundation Work														
Piles and Foundation Activities														Upcoming
Mechanical Work														
Heating Hot Water Piping Layout														Complete
Southern California Edison Design (Power for Chiller Plant)														In Progress (Review and Approval of Design by SCE by mid-to-late-March)
CLOSE-OUT PHASE														
ANAHEIM														
Anaheim Tower First Floor Life/Safety Renovation														
Punch-List / Final Completion														Complete
Financial Close-Out														In Progress
California Community Colleges Chancellor's Office Close-Out														In Progress
FULLERTON														
New M&O Building														
Substantial Completion														Upcoming (Anticipated April 10, 2025)
Punch-List / Final Completion														Upcoming
Financial Close-Out														Upcoming
Student Support Center														
Substantial Completion														Upcoming (Anticipated April 25, 2025)
Punch-List / Final Completion														Upcoming
Financial Close-Out														Upcoming
CYPRESS														
Electrical Vehicles (EV) SCE Charging Stations-Lot 4														
Financial Close-Out														In Progress

The 90 day schedule has been updated since the report's printing date

Thank you

Next Meeting: June 4, 2025

Location: TBD