

June 2025



MEASURE

NORTH ORANGE COUNTY
COMMUNITY COLLEGE DISTRICT

J

CAPITAL PROJECTS REPORT to the

Citizens' Oversight Committee

MAAS

Intentionally Left Blank

TABLE OF CONTENTS

Active Project Status Report

Cypress Campus

Campus Aerial View	2
Fine Arts Building Renovation.....	3
Electrical Vehicles (EV) SCE Charging Stations-Lot 4.....	4
Softball Field Renovations	5
LLRC Exterior Patio.....	6
Central Plant Upgrade	7
Updates on Campus Projects - Cypress College	8-10

Fullerton Campus

Campus Aerial View	11
Renovate Buildings 300	12
New Maintenance & Operation Building	13
Student Support Center	14
New Performing Arts Complex - Demolish Buildings 1100 and 1300.....	15
Wilshire Chiller Plant Relocation	16
New Horticulture/Lab School/STEM Lab	17
Softball Field Improvements.....	18
Update / Improve Infrastructure	19
Updates on Campus Projects - Fullerton College	20-30

NOCE - Anaheim Campus

Campus Aerial View	31
Swing Space—Interim Housing.....	32
Swing Space—HRC.....	33
Develop Interior And Exterior Signage	34
Anaheim Campus Tower First Floor Life/Safety Renovation	35
Outdoor Patio Remodel	36
Exterior Green Community Space Enhancement	37
Restore East Parking Lot	38
Update / Improve Infrastructure	39
Updates on Campus Projects - Anaheim Campus	40-43

Completed Projects

Cypress Campus	45-47
Fullerton Campus	48
NOCE - Anaheim Campus & District Offices	49

Financial Review

<i>Capital Project Updates - Measure J</i>	51
Estimated Project Budgets & Purchase Orders Over \$10,000	52-60
Cypress Campus.....	52-53
Fullerton Campus.....	54-56
NOCE - Anaheim Campus	57-58
District	59-60
90-Day Look Ahead Schedule	61-64

Active Project Status Report

Campus Projects

- Cypress
- Fullerton
- Anaheim and District Offices

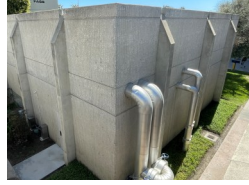


AERIAL VIEW — CYPRESS CAMPUS PROJECTS

9200 Valley View St., Cypress, CA 90630



Fine Arts Building Renovation
[Construction]



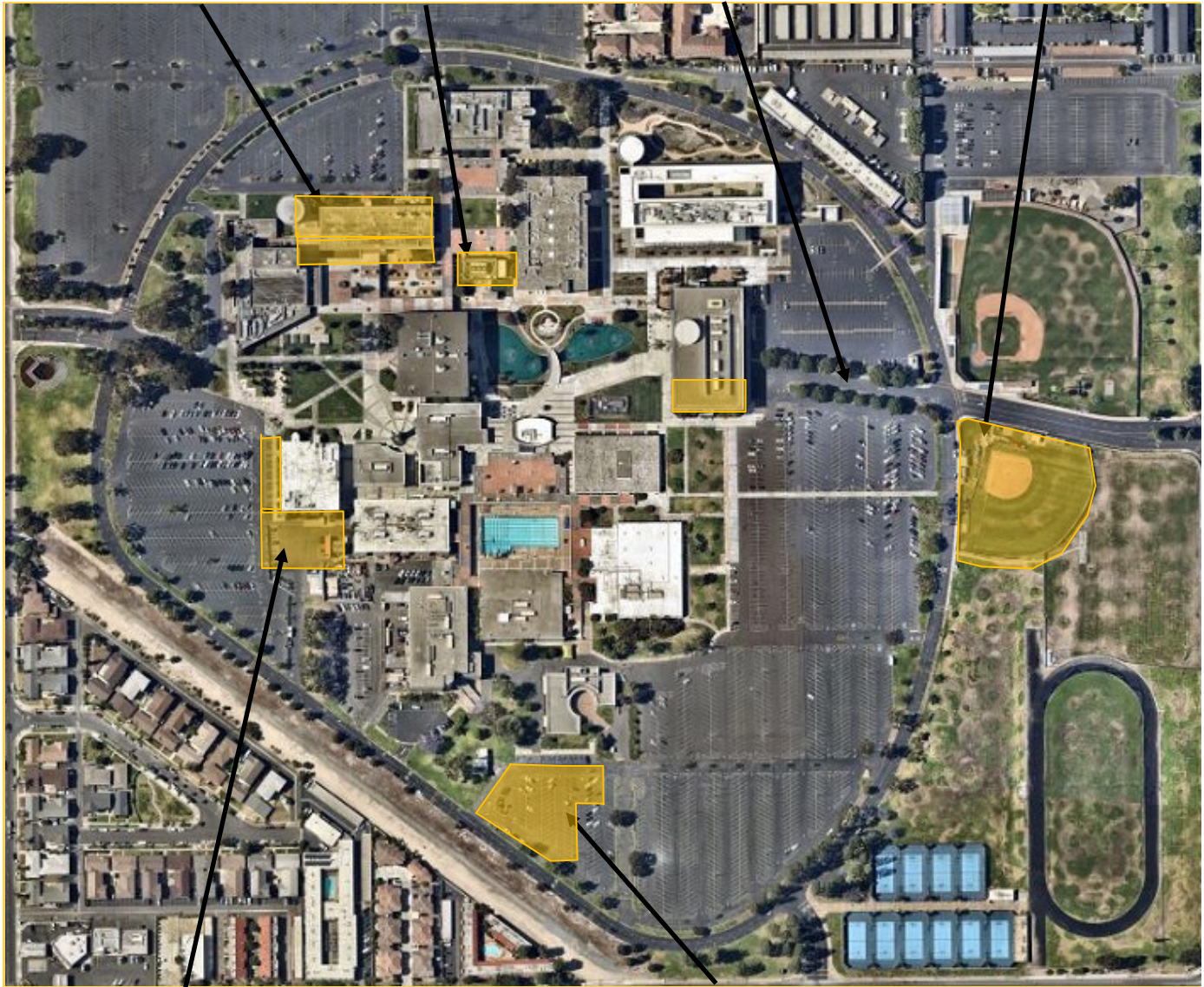
Central Plant Upgrade
[Design — Programming Validation]



LLRC Exterior Patio
[Schematic Design]



Softball Field Renovations
[Design — Construction Documents]



Swing Space Project—Hotel, Restaurant, and
Culinary Arts
[Preparation for Dismantling]

*Refer to pages 33 and 40-43 for more details



Electrical Vehicles (EV) SCE Charging Stations-Lot 4
[Close-Out]



PROJECT STATUS REPORT — CYPRESS CAMPUS

FINE ARTS BUILDING RENOVATION CONSTRUCTION

Project Manager	Allison Coburn Project Manager Campus Capital Projects
Construction Manager	Sundt Construction, Inc.
Architect of Record	DLR Group
Project Delivery Method	Construction Manager Multi-Prime
Project Square Footage	66,765 GSF
DSA Application A#	04-120539



Project Overview

The Fine Arts Building will undergo a structural and interior renovation to enhance students' academic experience. Improvements will be made to the recording arts, rehearsal and performance spaces for music instruction, along with spaces for one-on-one sessions. Existing vacant spaces not currently configured for instruction will be utilized. Noise intrusion mitigation work will ensue to minimize disruptions to instruction and music practice. New technology will be installed to support current instructional methodologies and pedagogies. The existing mechanical, electrical, and plumbing systems will be replaced. Restrooms will be updated for code-compliance. DSA-designated seismic upgrades are also planned.

Budget & Construction Costs

- Total Project Budget.....\$77,289,871
- Funding Source.....Measure J, State
Capital Outlay
- Measure J.....\$56,400,871
- State Capital Outlay\$20,889,000

Schedule

- Construction Start.....April 2024
- Targeted Construction Completion.....June 2026
- Targeted OccupancyFall 2026



PROJECT STATUS REPORT — CYPRESS CAMPUS

ELECTRICAL VEHICLES (EV) SCE CHARGING STATIONS-LOT 4 CLOSE-OUT

Project Manager	Anne Acurso Project Manager Campus Capital Projects
Architect of Record	Southern California Edison
General Contractor	Asplundh Construction
Project Delivery Method	Turnkey
Project Square Footage	N/A
DSA Application #	04-122207



Project Overview

In coordination with Southern California Edison (SCE), 60 electric vehicle charging stations will be installed at Parking Lot 4 in the vicinity of the North Orange Continuing Education (NOCE) Building. Upon completion, users will enjoy improved facilities that will accommodate their charging needs.

- Project Budget..... \$492,000
- Funding Source Measure J
- Construction Start..... May 2024
- Construction Completion..... October 2024



PROJECT STATUS REPORT — CYPRESS CAMPUS

SOFTBALL FIELD RENOVATIONS

DESIGN — CONSTRUCTION DOCUMENTS

Project Manager	Anne Acurso Project Manager Campus Capital Projects
Architect of Record	SGH Architects
General Contractor	TBD
Project Delivery Method	Design-Bid-Build
Project Square Footage	53,598 SF
DSA Application #	TBD



Project Overview

This project will feature new field amenities, including bleachers with an elevated press box, new backstop fencing and netting, new dugouts, storage facilities, enhanced landscaping and hardscaping around the fields, and improvements to comply with the Americans with Disabilities Act (ADA).

- Project Budget..... \$4,170,229
- Funding Source Measure J & Local
 - Measure J \$4,000,000
 - Local \$170,229
- Estimated Construction Start..... February 2026
- Targeted Construction Completion February 2027



PROJECT STATUS REPORT — CYPRESS CAMPUS

LIBRARY & LEARNING RESOURCE CENTER (LLRC) EXTERIOR PATIO SCHEMATIC DESIGN

Project Manager	Anne Acurso Project Manager Campus Capital Projects
Architect of Record	SGH Architects
General Contractor	TBD
Project Delivery Method	Design-Bid-Build
Project Square Footage	Approximately 7,500 GSF
DSA Application #	TBD



Project Overview

This project will create areas for student use and campus events including new hardscape, landscape, lighting, and furniture.

- Project Budget..... \$1,287,000
- Funding Source..... Measure J
- Estimated Construction Start September 2026
- Targeted Construction Final Completion March 2027



PROJECT STATUS REPORT — CYPRESS CAMPUS

CENTRAL PLANT UPGRADE DESIGN — PROGRAMMING VALIDATION

Project Manager	Allison Coburn Project Manager Campus Capital Projects
Architect of Record	N/A
General Contractor	Trane U.S., Inc.
Project Delivery Method	Design-Bid-Build
Project Square Footage	Approximately 5,645 GSF
DSA Application #	TBD



Project Overview

The project will involve expanding the capacity of the existing south central plant by installing new chillers, reconfiguring piping to support the entire campus loop, and refurbishing the cooling towers in both the north and south central plants. Phase 1 will focus on conducting field investigations to assess existing conditions, creating Schematic Design Documents, and finalizing the Guaranteed Maximum Price (“GMP”) for turnkey services. This will set the stage for Phase 2, which will include completing the Design Documents, securing DSA approval, and carrying out the necessary construction work.

- Project Budget..... \$4,000,000
- Funding Source..... Measure J
- Estimated Construction Start August 2026
- Targeted Construction Final Completion April 2027



PROJECT STATUS REPORT — CYPRESS CAMPUS



Fine Arts Building Renovation —
Wall Framing

Fine Arts Building Renovation

March

- On the interior, the project progressed with the continuation of metal wall framing on all floors. DSA approval for the fire sprinkler Construction Change Directive (CCD) is anticipated to be received mid-month, after which framing on the first floor will continue.
- Activities for drywall insulation and installation on the third floor priority walls are anticipated to be completed by the end of the month. The same activities have begun on the second floor. Mechanical, electrical, and plumbing (MEP) rough-in is nearing completion on the third floor, with work expected to be finished in the coming weeks.
- Storm drain points of connection were made at the north elevation in February. Design revisions must be completed before finishing work on the south elevation. Once addressed, crews are anticipated to complete this scope of work in the coming weeks.

- Multiple change orders were presented to the Board of Trustees for changes to trades contractor contracts at the second meeting in March for the Board's consideration.

April

- Crews continued installation of the window mockup. Work on the PVC roof and waterproofing systems for the elevator shaft, machine roof, and Stair Towers 2 and 3 were underway.
- Site utilities work progressed with the final connection for the storm drain at the north and south elevations. Its conclusion awaited coordination and design revisions to avoid the existing infrastructure in the area.
- On the building interior, MEP equipment installation proceeded with the placement of the stand-by generator, transformer, hydraulic pumps, and condensers.
- Overhead and in-wall MEP rough-in work continued on the third floor, along with drywall and insulation in classrooms, labs, and restrooms. Metal stud wall and soffit framing were underway on the second floor, along



Fine Arts Building Renovation — Wall Framing

PROJECT STATUS REPORT — CYPRESS CAMPUS



Fine Arts Building Renovation — Drywall Hanging

taking place on the same level. On the second floor, drywall and insulation application to the newly framed walls of the classrooms, laboratories, and restrooms are continuing. MEP and rough-in activities ensued on the first floor. Hydraulic lines are also being placed between the elevator shaft and machine room.

- Crews are in the process of placing the sewage interceptor at the kiln yard. The final domestic water, sewer and storm drain building connections are pending design revisions to avoid existing infrastructure in the area.
- Recommendations for change orders for eight trades contractors are anticipated to be presented to the Board of Trustees at the second meeting in May including approximately \$90K in deductions from cost savings efforts.

with MEP overhead rough-in. Meanwhile, work on the first floor progressed as metal stud wall and MEP layout were addressed over the month.

- Recommendations for change order approval were presented to the Board of Trustees at the second meeting in April for eight prime contractors including approximately \$800K in deductions for revisions and scope of work changes.

May

- In May, mockup window testing was held and corrections were made to the mockup ahead of retesting that was planned to occur later in the month. MEP installation progressed on the condensers at the roof.

- Drywall activities are advancing in the interior of the building as crews began taping on the third floor. Door frame hanging also is

Electrical Vehicles (EV) SCE Charging Stations - Lot 4

March — May

- The stalls have been completed and are in use since fall 2024. DSA certification was achieved on April 9. Project savings will be reallocated to priority projects at Cypress Campus in the coming months. The project is now complete.

Softball Field Renovations

March — May

- By the start of March, the project neared the conclusion of the Design Development phase. The Campus Project Team reviewed the 100 percent Design Development drawings to provide its feedback to the Design Team. Upon receiving the comments, the Design Development Drawings were finalized. The project transitioned to the Construction Documents phase. The Campus Project Team is now working on the 60 percent Construction Documents installment.



PROJECT STATUS REPORT — CYPRESS CAMPUS

- In April, the Campus Project Team awaited clarification regarding electrical panels found on-site that may be connected to the adjacent soccer field. The information will be provided to the Design Team for incorporation into the final drawings.

Library & Learning Resource Center (LLRC) Exterior Patio

March

- A project kick-off meeting with the Building User Group (BUG) took place in March after the faculty's return to session.
- A topographical survey was conducted to account for any significant elevation changes to inform the future design.

April — May

- The Campus Project Team and Design Team met with the Building User Group (BUG) as part of the Schematic Design; this phase is anticipated to conclude in June, after which the project is expected to enter Design Development.



Library & Learning Resource Center (LLRC) Exterior Patio —
Project Site

Central Plant Upgrade

March — May

- The cooperative contract with Trane U.S. Inc. to enter into Phase 1 was presented to the Board of Trustees at the second meeting in May.



AERIAL VIEW — FULLERTON CAMPUS PROJECTS

321 E. CHAPMAN AVE., FULLERTON, CA 92832



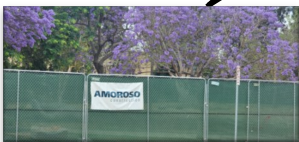
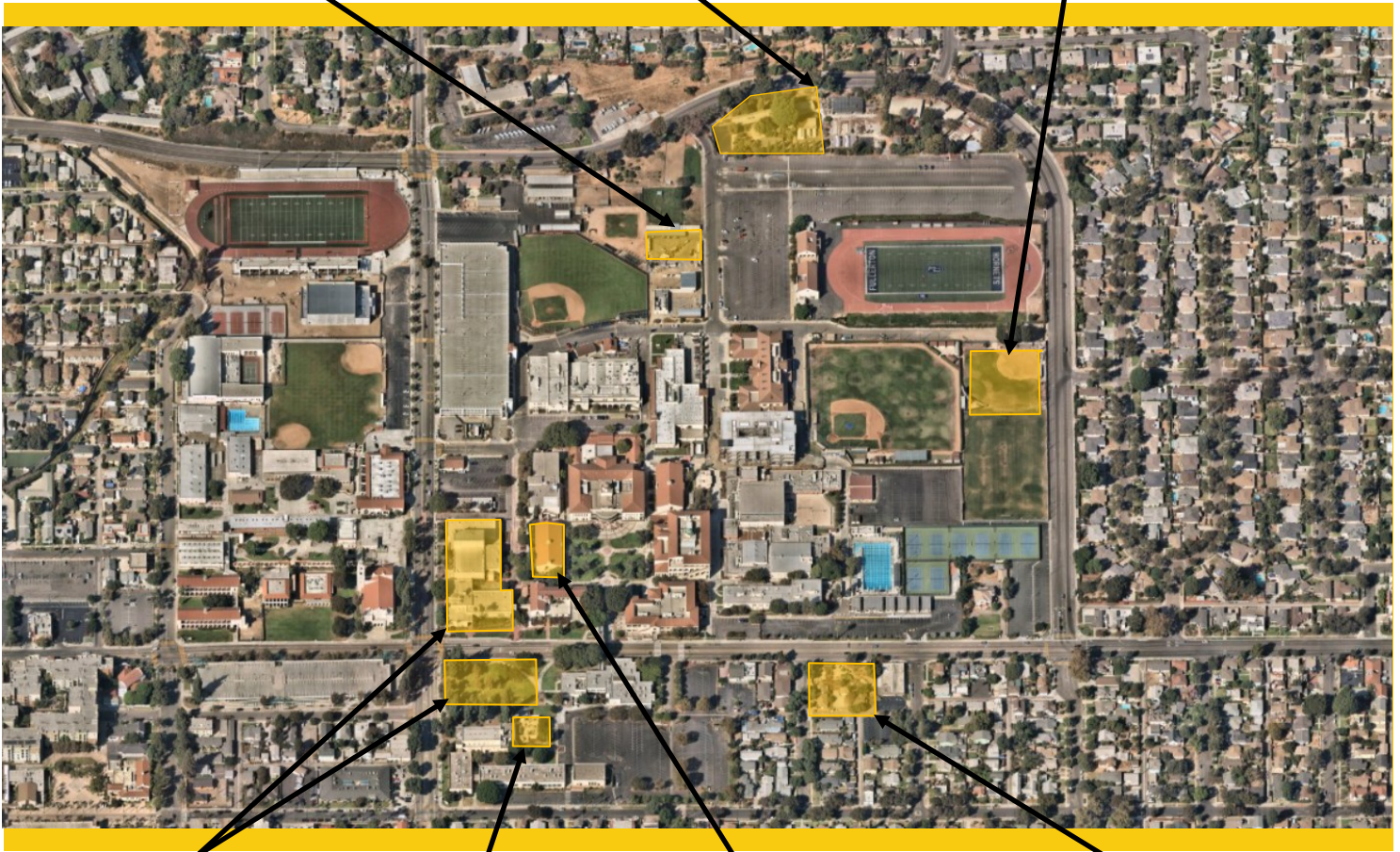
New Maintenance & Operations
Building
[Construction]



New Horticulture/Lab School/
STEM Lab
[Planning]



Softball Field
Improvements
[Schematic Design]



New Performing Arts Complex -
Demolish Buildings
1100 and 1300
[Construction]



Wilshire Chiller Plant
Relocation
[Construction]



Renovate Building 300
[Construction]



Student Support Center
[Construction]



PROJECT STATUS REPORT — FULLERTON CAMPUS

RENOVATE BUILDING 300 CONSTRUCTION

Project Manager	John Erickson Project Manager Campus Capital Projects
Construction Manager	Simpson & Simpson
Architect of Record	Westberg White
General Contractor	Icon West
Project Delivery Method	Design-Bid-Build
Project Square Foot-	22,705 GSF
DSA Application A#	04-118314, 04-121906



Project Overview

A total renovation of Building 300, including seismic enhancements and historic consideration, are planned under the project's scope of work. Upon completion, the building will contain general classrooms, dean and faculty offices, shared laboratories, and improved foundations for a safer built environment.

Budget & Construction Costs

- Total Project Budget.....\$34,263,861
- Funding Source.....Measure J, State Capital Outlay, & Local
- Measure J.....\$22,982,000
- State Capital Outlay\$11,272,621
- Local Funds.....\$9,240

Schedule

- Construction Start.....May, 2024
- Targeted Construction Completion.....December 2025

Allowance Status					
	In Contract	Approved		Balance	
Allowance	\$ 2,879,550	\$ 1,039,450	36%	\$ 1,840,100	64%



PROJECT STATUS REPORT — FULLERTON CAMPUS

NEW MAINTENANCE & OPERATION BUILDING CONSTRUCTION

Project Manager	John Erickson Project Manager Campus Capital Projects
Architect of Record	BN Builders, Inc. & Roesling Nakamura Terada
General Contractor	BN Builders, Inc.
Project Delivery Method	Progressive Design-Build
Project Square Footage	14,723 GSF
DSA Application A#	04-121528



Project Overview

The New Maintenance and Operations (M&O) Building will centralize all services into a single building located on the Main Campus. The building will include trade-specific workshops for maintenance, grounds, facilities, and custodial personnel while improving response time and efficiencies by locating the building on the Main Campus adjacent to the central plant.

Budget & Construction Costs

- Total Project Budget.....\$20,116,654
- Funding Source.....Measure J & Local
- Measure J.....\$6,399,604
- Local Funds.....\$13,717,050

Schedule

- Construction Start.....October 2023
- Targeted Construction Completion.....May 2025

Allowances and Contingencies Status						
	In Contract		Approved		Balance	
Contingency	\$	318,703	\$	280,457	88%	\$ 38,425 12%
Allowances	\$	501,866	\$	200,268	40%	\$ 301,598 60%



PROJECT STATUS REPORT — FULLERTON CAMPUS

STUDENT SUPPORT CENTER CONSTRUCTION

Project Manager	John Erickson Project Manager Campus Capital Projects
Architect of Record	BN Builders, Inc. & Roesling Nakamura Terada Architects, Inc.
General Contractor	BN Builders, Inc.
Project Delivery Method	Progressive Design-Build
Project Square Footage	23,192 GSF
DSA Application A#	04-121527



Project Overview

Located at the intersections of Chapman Avenue and Newell Street, the project formerly known as the Chapman/Newell Instructional Building, will be home to an array of student services vital to their success, including the Campus Veterans' Resource Center, Student Wellness Center (both medical and behavioral health), the Campus Food Bank, Umoja Community Program, Extended Opportunity Programs and Services (EOPS), CalWORKS, Cooperative Agencies Resources for Education (CARE)/Foster Youth Success Initiative (FYSI), a Multi-Cultural Center, and 2 instructional classrooms. Support functions will be available with community storage, a department-wide copy and breakroom, and a lactation room.

Budget & Construction Costs

- Total Project Budget.....\$29,982,754
- Funding Source.....Measure J & Local
- Measure J.....\$28,302,917
- Local Funds.....\$1,679,837

Schedule

- Construction Start.....October 2023
- Targeted Construction Completion.....May 2025

Allowances and Contingencies Status						
	In Contract		Approved		Balance	
Contingency	\$	559,496	\$	425,165	76%	\$ 134,331 24%
Allowances	\$	679,500	\$	255,107	38%	\$ 424,393 62%



PROJECT STATUS REPORT — FULLERTON CAMPUS

NEW PERFORMING ARTS COMPLEX - DEMOLISH BUILDINGS 1100 AND 1300 CONSTRUCTION

Project Manager	John Erickson Project Manager Campus Capital Projects
Construction Manager	Kitchell/CEM Inc
Architect of Record	Perkins Eastman Architects
General Contractor	SJ Amoroso Co., LLC
Project Delivery Method	Design-Bid-Build
Project Square	77,560 GSF
DSA Application A#	04-121681



Project Overview

This project addresses the demand for enrollment in the Performing Arts programs by constructing a new complex that will combine music, drama, theater arts, and communication programs into a single facility. The new building will replace outdated facilities with electrical deficiencies and outmoded configurations. The new structure will take advantage of the potential use of commonly required spaces to improve overall utilization and flexible spaces that help programs in meeting higher demands anticipated in the near future.

- Total Project Budget Increase to \$135,956,025
- Funding Source Measure J & State Capital Outlay
 - Measure J \$92,005,166
 - State Capital Outlay Funds \$43,787,000
 - Local Funds..... \$163,859
- Construction Start May 2025
- Targeted Construction Completion Summer 2027



PROJECT STATUS REPORT — FULLERTON CAMPUS

WILSHIRE CHILLER PLANT RELOCATION

CONSTRUCTION

Project Manager	Aaron Choi Project Manager
Architect of Record	Perkins Eastman Architects
General Contractor	Plumbing, Piping & Construction, Inc.
Project Delivery Method	Design-Bid-Build
Project Square Footage	2,175 GSF
DSA Application A#	04-121682



Project Overview

Considered the first phase of the New Performing Arts Complex project, the Wilshire Chiller Plant will be relocated adjacent to its original location to accommodate the future construction of the New Performing Arts Complex in its original building footprint. The facilities deliver temperature control to the buildings in its vicinity, including the Wilshire Center. The new facility will provide the same service to the current buildings in addition to the new Performing Arts Complex. The relocation of the infrastructure will be carried in coordination with the local utility, Southern California Edison (SCE). Following DSA approval of Increment 1, a revised estimate of probable cost of construction now accounts for current market conditions and material prices.

Budget & Construction Costs

- Total Project Budget.....\$14,772,894
- Funding Source.....Measure J

Schedule

- Construction Start.....May 2024
- Targeted Construction Completion.....November 2025

	Allowance Status				
	In Contract	Approved		Balance	
Allowance	\$ 543,683	\$ 537,278	99%	\$ 6,405	1%



PROJECT STATUS REPORT — FULLERTON CAMPUS

NEW HORTICULTURE/LAB SCHOOL/STEM LAB PLANNING

Project Manager John Erickson
Project Manager
Campus Capital Projects

Architect of Record TBD

General Contractor TBD

Project Delivery Method Design-Build

Project Square Footage Approximately 40,000
GSF

DSA Application A# TBD



Project Overview

Consolidate all STEM programs into a two-floor building with updated laboratories and associated infrastructure, greenhouse spaces, tailored classrooms, tutoring spaces, and Americans with Disabilities Act (ADA) improvements.

- Total Project Budget (Est.)\$52,181,636
- Funding SourceMeasure J & State Capital Outlay
 - Measure J\$25,167,636
 - State Capital Outlay Funds\$27,014,000
- Estimated Construction Start.....Summer 2027
- Targeted Construction CompletionFall 2028



PROJECT STATUS REPORT — FULLERTON CAMPUS

SOFTBALL FIELD IMPROVEMENTS

PLANNING

Project Manager	Jorge Arredondo Assistant Project Manager Campus Capital Projects
Architect of Record	TBD
General Contractor	TBD
Project Delivery Method	Design-Bid-Build
Project Square Footage	Approximately 16,863 SF
DSA Application A#	TBD



Project Overview

This project intends to address deficiencies to the existing facilities and associated infrastructure for the campus athletics department.

- Total Project Budget (Est.)\$7,000,000
- Funding SourceMeasure J
- Estimated Construction Start.....March 2026
- Targeted Construction CompletionDecember 2026



PROJECT STATUS REPORT — FULLERTON CAMPUS

UPDATE/IMPROVE INFRASTRUCTURE

VARIOUS STAGES

Address	321 E. Chapman Ave.	Total Project Budget	\$19,075,188 (Measure J)
	Fullerton, CA 92832	Total Budget Allocated	\$8,294,702 (Measure J)
Number of Projects	5	Funding Source	Measure J & Capital Outlay

General Overview

The projects will address infrastructure improvements or upgrades throughout the Campus. Funds are allocated to projects as needs are identified.



PROJECT STATUS REPORT — FULLERTON CAMPUS

Renovate Building 300

March

- Fiber reinforced polymer (FRP) wall framing advanced, with the completion of door frame installation pending adjustments. Insulation and fireproofing activities were set to follow FRP completion of each floor.
- The installation of the catwalk started in March and was completed by the end of the month, allowing crews access to the attic space in the building to facilitate all related work including rough-in activities.
- Electrical and plumbing rough-in began in late March, followed by drywall installation after Campus Facilities conducted a site walk to ensure the installed items met the contract requirements. Efforts also took place with the Furniture Fixtures & Equipment (FF&E) coordinator, Dovetail Decision Consultants, for confirmation of placement of electrical and data receptacles in coordination with furniture requirements.
- In the lobby area, the pile cap scope of work progressed, with preparations for the remaining reinforcement bar placement set for mid-March. Metal deck installation commenced at the start of the month.



Renovate Building 300 — Fiber Reinforced Polymer Application



Renovate Building 300 — South Stairs Reconstruction

- In the basement, partial shoring was removed or relocated. Demolition of the existing basement slab started, followed by the installation of electrical conduits and grounding. The new concrete pad is scheduled to be poured at the beginning of April.

April

- The FRP application on the second-floor was finished in late April. Crews then performed rough-in mechanical, electrical, and plumbing (MEP) work, with 20 percent remaining by the end of the month. Following the completion of activities on the second floor, crews proceeded with FRP work on the first floor and basement. Its completion was pending responses to requests for information (RFI) and approval of comments by the Design Team. Installation of ductwork and supports on the first

PROJECT STATUS REPORT — FULLERTON CAMPUS

floor began in early April. Wall framing began in mid-April, with activities expected to conclude by mid-May. MEP rough-in work followed framing, and will continue into June. Crews will then begin addressing drywall hanging in mid-June on this floor. Hazardous materials abatement at the window wooden frames was underway and continued into May.

- Preparations for the upcoming delivery of the air handling unit, heat exchanger, and pumps progressed. Coordination for the chilled mechanical-water line were expected to minimize any potential impacts on campus operations in the coming weeks. Seismic bracing on ductwork advanced, and switchgear panels were expected by the end of April. Switchgear installation began at the end of April.



Renovate Building 300 — North Stairs Reconstruction

- Crews worked on the north staircase starting with the demolition of the existing walkways after receiving approval of an outstanding construction change directive (CCD).

May

- On the second floor of the building's interior, drywall hanging is progressing; this portion of the scope of work is planned to conclude in the third week of the month. The second layer is expected to be applied in June. Insulation activities are planned to be addressed in mid-May. The walls are expected to be closed by the end of the month, with drywall taping, sanding, and primer application scheduled for June. Cement boards arrived on site in mid-May, paving the way for final tiling work. Fire caulking and sealant will commence throughout the second level in June and ceiling grids are anticipated to be installed in July.
- Hallway ceiling framing is advancing, with work on the roof soffits set to begin at the end of the first week of May, followed by wall and MEP pipe insulation. Hydronic line installation began in the first week of this month and concluded by the end of the same week. Inspections will start once piping on both floors is in place. Overhead MEP work is expected to be completed concurrently with drywall hanging.
- On the first floor, the completion of the FRP installation is expected in the third week of the month. Wall framing, backing, and door frames are also progressing, followed by rough-in MEP and placement of data infrastructure. The Campus Academic Computing Technologies (ACT) team is anticipated to visit the site in late May to review receptacle locations. Drywall hanging on the first floor will begin at the start of June. Overhead seismic bracing has been completed.



PROJECT STATUS REPORT — FULLERTON CAMPUS

- Preparations for the new sidewalk are underway. Work on underground plumbing and irrigation is expected to start by the end of May, with chilled water line underground installation proceeding in early June near Building 1300.
- In the basement, equipment installation and bracing continued into the third week of May. The electrical substation has been set and is awaiting construction change directive responses prior to its completion.
- Grading is progressing in preparation for the placement of reinforcement bars and concrete pours for the sidewalks.
- Trenching for underground plumbing began in the last week of May for irrigation lines and other plumbing adjacent to the building. The new chilled water line connections will start in the first week of June with tie-into the existing utilities by the third week of June.

New Maintenance & Operations Building

March

- By early March, scaffolding was removed from the building exterior after the conclusion of façade activities to allow for work on the utilities and hardscape to proceed. Gutters and other exterior flashing were installed, with clay roof tiles starting installation in the third week of the month.
- Inside the structure, acoustical ceiling tile installation continued. Doors and hardware were later set in place, and ceiling light activities were underway. Work on the elevators continued and concluded by the second week of the month.
- Restroom tiling progressed followed by ceiling installation. Once the tiles were in place, flooring and specialty equipment installation followed in late March.
- The intermediate distribution frame rooms that distribute network connectivity from the main building distribution frame to each floor was completed in the month.
- Ceiling grids, acoustical tile installation, and lighting progressed in the maintenance shop and golf cart storage areas.
- All other finishes began in March. Sidewalk activities began, starting with site grading in early March.



New M&O Building — Exterior Façade Activities

PROJECT STATUS REPORT — FULLERTON CAMPUS

- The Owner Controlled Insurance Program (OCIP) visit that took place at the end of March revealed no findings.

April

- Crews finished installing the clay tile roof and downspouts. Final interior finishes progressed, with overhead ceiling tiles installed by the end of the month. The furniture was set in place, followed by the electrical tie-in. Final items were expected to be installed in May, with punch-list items in progress.
- Accessory installation in the restrooms continued, with tile work finished on both levels. Resilient flooring on the second level neared completion. Fire alarm installation progressed and was set to be finished by early April. Fire alarm and sprinkler testing were ongoing. Work was underway on attaining information technology network and building entry access. Final finishes, including painting, ceiling tile placement, signage, and other miscellaneous items, were underway. Campus communication networks were achieved. Final elevator details were resolved along with the punch-list. Elevator pre-inspections took place in preparation for state inspections in late May.
- Mechanical airflow testing continued for the building as part of commissioning activities. Commissioning meetings were taking place on a weekly basis to track checklist items.
- Crews worked on the exterior gutters with their full placement expected to be completed by the end of April. Additional finishes, such as signage, were carried out.
- Concrete pours for exterior sitework took place in the last week of March, followed by asphalt completion in the first week of April. Parking stall striping commenced in the second week of April. Landscaping and irrigation progressed and was completed by the end of the month.



New M&O Building — Hardscaping Activities

May

- On May 7, the Campus Project Team, Design Builder, and Architect of Record conducted the punch-list walk to assess pending items to be completed prior to project completion. Minimal items are being addressed prior to the completion of the project. Final punch-list cleanup is underway inside the building, while outside, the concrete pours for the hardscape have been completed.
- Welding of the fencing on the north side of the building is ongoing. The Campus Facilities staff have completed their training. The parking lot at the previous trailer location will be paved with a concrete mixture known as “slurry” and restriped.



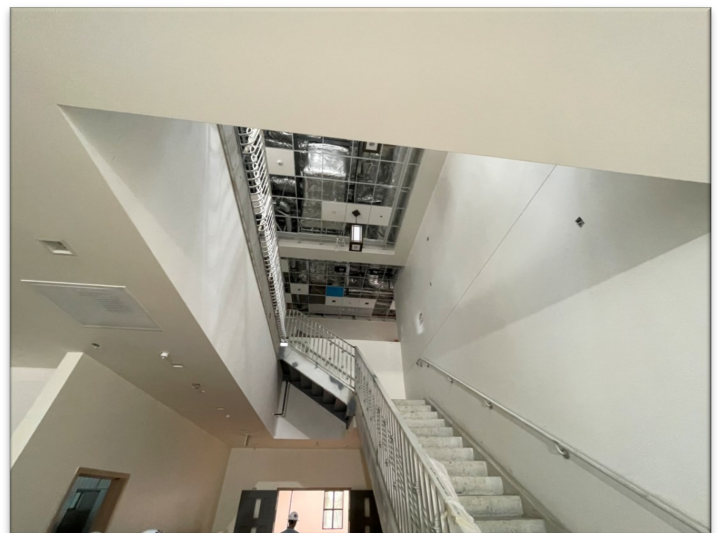
PROJECT STATUS REPORT — FULLERTON CAMPUS

- The building is fully energized; commissioning is expected to continue until the third week of the month.
- State elevator inspection is set for the end of May, and staff training for Campus Facilities is being scheduled in the coming weeks.
- Furniture deliveries are completed with assembly expected to be finished in early May. Landscaping concluded by end of May, alongside the installation of fence posts. The remaining hardscape concrete pours were carried out.
- Modular buildings for the design-builder project management and Inspector of Record were removed and the teams will be using a completed space in the New M&O building as the project nears completion.

Student Support Center

March

- The exterior of the building neared completion, with the scratch, brown, and finish coat layers almost fully applied. Building façade activities including Top Cast activities were completed, making way for stucco application to begin in the same area. The remaining Glass Fiber Reinforced Concrete pieces were set in place early on in the month.
- A scratch layer was applied to the roof parapets and skylight curbs on the flat roof. Work on the skylight progressed and was finished by mid-March.
- On the sloped roof, clay tile layout, supporting pins, and wire installation were underway, followed by tile placement. Tile deliveries took place in the third week of March. Metal dome activities commenced upon the conclusion of tiling work with its delivery taking place in the final week of the month.
- Inside the building, drywall installation in the first-floor lobby concluded, and door installation followed. Ceiling taping finished in early March, after which crews began placing the drop ceiling. Concurrently, flooring started in the early weeks of the month. A substrate was applied to the floors to establish an even surface prior to the start of this activity.
- On the second floor, stair handrails were installed, and the remaining paint, ceiling tiles, and other miscellaneous items were set to begin in the coming weeks. Flooring progressed with the carpet installed on the west side, and preparatory work for the east side in mid-March. The same



Student Support Center — Interior Stairwell and Lobby

PROJECT STATUS REPORT — FULLERTON CAMPUS



**Student Support Center —
Building Façade Ornamental Tile Placement**

the rains subsided. Three decaying trees were removed in the parkway on the sidewalk. Sidewalk grading on Chapman Avenue took place, following the minor relocation of electrical utilities for traffic signal control by the City of Fullerton.

activity continued on the first floor upon its conclusion.

- Ninety percent of the specialty equipment was previously set in place, with the remainder addressed on the first and second floors. Low voltage equipment work on both the first and second floors was completed by the end of the month.
- The elevator machine room build-out was completed and testing was conducted. Electrical and fire sprinklers followed suit. Heating, ventilation, and air conditioning (HVAC) finishes were completed at the end of March.
- The trash enclosure and grading for curbs and gutters were addressed, followed by their installation.

Street improvements on Newell Place proceeded in the last week of March. Site work resumed once removed in the parkway on the sidewalk. Sidewalk

grading on Chapman Avenue took place, following the minor relocation of electrical utilities for traffic signal control by the City of Fullerton.

April

- Roof tile placement was underway. Crews completed a portion of the building façade activities with the conclusion of Top Cast installation. The final Glass Fiber Reinforced Concrete (GFRC) components were delivered for the entryways and were installed upon their arrival. Scaffolding disassembly began once stucco work was achieved. The final portions of scaffolding were removed by the first week of April. Fabrication of the roof dome was completed and ready for installation later in the month. Skylight activities came to a close followed by painting by the end of the third week of the month. Crews then addressed flooring upon its conclusion.
- Tile work on the first floor was completed by the end of March, and carpeting on the second level was finished by early April. Final finishes, including painting, ceiling tile placement, signage, and other miscellaneous items, proceeded as planned.
- Furniture, fixtures, and equipment (FF&E) deliveries continued, with additional finishes such as signage and window shades achieved by the end of the month. Building access control and door hardware installation continued, and lobby flooring was completed by the second week of April. A final coat of paint progressed on the second floor. Project signage was installed by the end of the month. Access controls were installed.
- Formwork for the parking lot was completed, ahead of concrete pours to finish pedestrian walkways by the



PROJECT STATUS REPORT — FULLERTON CAMPUS

third week of April. Soil compaction continued to allow the paving of the parking lot on the south side of the building by the end of April.

- Site work progressed on Chapman Avenue and Newell Place, with adjustments made to site perimeter fencing and temporary fencing as needed. Gas line installation was scheduled to begin in early April. Work on obtaining permits from The Gas Company remained underway.
- Asphalt for the parking lot and surrounding areas was delivered, followed by paving. Landscaping irrigation and planting began in April. The Owner Controlled Insurance Plan (OCIP) visit at the end of March reported no findings.
- Commissioning meetings continued on a weekly basis, with special attention on addressing the building commissioning checklist.



Student Support Center — Exterior Elevations

May

- The Glass Fiber Reinforced Concrete (GFRC) installation for the Student Support Center is nearly complete, with the exception of the Americans with Disabilities Act (ADA) components that were set in place in the third week of the month. Interior tile work is finished, while the exterior entryway tile is progressing.
- On the interior, glazing is complete. Furniture, fixtures, & equipment installation validation and punch-list took place in the third week of May. The remaining items for the food pantry will be installed in the last week of May.
- Final cleanup is in progress inside the building, with all electrical panels now energized. The installation of monitors is underway. Outside, the gas meter was installed, and the trash enclosure and fence posts are being set up.
- The state elevator inspection is anticipated to occur in June. Southern California Edison began installation of the transformer in the second week of May, taking two days to complete. Its conclusion enabled the permanent energization of the building by late May.

New Performing Arts Complex

March

- The project received approval from the State Chancellor's Office and the Department of Finance in the third week of March, allowing the District to execute the contract for selected general contractor, SJ Amoroso Co.,



PROJECT STATUS REPORT — FULLERTON CAMPUS

LLC.

- The Campus Project Team and Construction Manager issued a Request for Proposals for Laboratory of Record, Geotechnical Engineer, and Inspector of Record among other professional services to execute the work on-site. Out of the respondents, the Campus Project Team and Construction Manager, Kitchell/CEM Inc., proceeded to interview candidates for all positions in early March.
- The District began working with Gallagher Insurance, Risk Management and Consulting, and the Alliance of Schools for Cooperative Insurance Programs (ASCIP) to obtain coverages for the Owner Controlled Insurance Program (OCIP) for this project.

April—May

- A Notice to Proceed with Construction was issued by the District on May 12. The Campus Project Team is working with general contractors, SJ Amoroso Co., LLC and Plumbing Piping & Construction, Inc. of the Wilshire Chiller Plant Relocation project to coordinate the start of construction.



New Performing Arts Complex — Site Perimeter Fencing



**Wilshire Chiller Plant Relocation —
Fire Hydrant Water Line Reroute**

- Crews began conducting mobilization activities including the placement of the fencing on May 13. The sculptures began being temporarily relocated for the duration of construction activities in the final week of the month.

Wilshire Chiller Plant Relocation

March

- In March, soil removal and layout for the fire hydrant water system was completed, and the line was later pressurized. A fire hydrant water shutdown took place over the second weekend of the month to finalize the reroute tie-in. Encasements at the inside perimeter of the building began demolition in the month. Soil removal for the compressor room was conducted by mid-March.

PROJECT STATUS REPORT — FULLERTON CAMPUS



**Wilshire Chiller Plant Relocation —
Pile Drilling Activities**

- Upon the conclusion of the latter activity, backfilling and soil compaction took place after inclement weather passed in the first weeks of the month.
- Work continued on the water valve and backflow devices located on Chapman Avenue; crews poured a concrete mixture known as slurry to finalize connections points to the greater infrastructure. Following a curing period, soil backfilling, site cleaning, and item removal will take place.
- Upon the resolution of all the unforeseen conditions, the project resumed building foundation activities starting in mid-March. Crews began preparations in anticipation of drilling and concrete pouring for 19 piles approximately 40 feet into the ground to stabilize the building in the event of any seismic movement. A pre-pile cast-in-drill-hole (CIDH) meeting took place in late March to coordinate the work between all involved parties.

April

- excavated, reinforcement bar cages were placed inside, followed by concrete pouring. The concrete foundation piles were poured and are curing.
- Trenching for the new mechanical water lines commenced, with piping installation beginning in early April. Demolition of electrical and fiber encasements around the building perimeter progressed and continued until the end of the first week of April. As sections of encasements were removed, their trenches were filled in and compacted. In the second week of April, over-excavation and compaction of the chiller building were carried out, followed by survey work for elevations, flooring, and building corners.
- Electrical and mechanical piping trenching and installation were underway in the third week of the month. The new gas line near Lemon Street was completed by the end of April, with backfilling finished by the second week of May. The installation of a new building sewer line commenced in the last week of April.



Wilshire Chiller Plant Relocation — Underground Piping Installation



PROJECT STATUS REPORT — FULLERTON CAMPUS



**Wilshire Chiller Plant Relocation — Completed Grade Beams and
Concrete Masonry Wall Installation**

- Over-excavation for the compressor room was completed at the start of May.
- Excavation is underway for the crane and green screen fencing. Mechanical water line trenching also progressed.

May

- Installation of the reinforcement bar for the foundation grade beams began in early May, followed by the placement of the foundation footings after its conclusion in the second week of the month. Concrete pours took place in the third week of the month. Crews followed these activities with the start of concrete masonry unit (CMU) wall placement at the end of May. Concrete slab on grade pouring will commence upon its conclusion.

- Electrical and mechanical piping inside the building is progressing well and is expected to be finished by early June.

- Crews began addressing the scope of work for Increment Two at the arts yard by setting the gas and sewer lines in place by mid-May; the lines were later backfilled. Mechanical piping is being fabricated. Surveying began in the middle of the third week of May.

New Horticulture/Lab School/STEM Lab

March — May

- In March, the project received notification of the preliminary allocation of state funding for the initial phase of design from the state, the allocation of which is anticipated to be determined in May.
- The Campus Project Team, MAAS Companies, Inc., and Fullerton Leadership coordinated the set up of the Building User Group in late April. A Request for Proposals for architectural firms for project planning, programming, and swing space purposes was released on May 5 to the existing pool of prequalified architectural firms. Responses from the interested firms were due by May 23. Once a selection is made and approved; verification of the original Final Project Proposal (FPP) will begin in coordination with the Campus Project Team, Planning Architect, MAAS, and the finalized Building User Group.



PROJECT STATUS REPORT — FULLERTON CAMPUS

Softball Field Improvements

March

- The project formerly known as the Athletic Field Improvements underwent a name change in February to closely reflect the project scope of work; moving forward, the project will be denoted as the Softball Field Improvements in future meeting minutes and reports.
- A Request for Proposals (RFP) was released to the District's pool of prequalified architectural firms in March. Respondents submitted their proposals by the March 31 deadline.

April

- All bid proposals from the RFP for architectural services were received by the Campus Project Team by the deadline. Pricing for the soil engineer, hazardous materials abatement firm, and underground utilities firms also were received. All items were reviewed internally with the team in preparation for the start of this project.

May

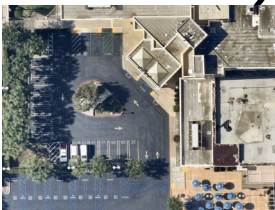
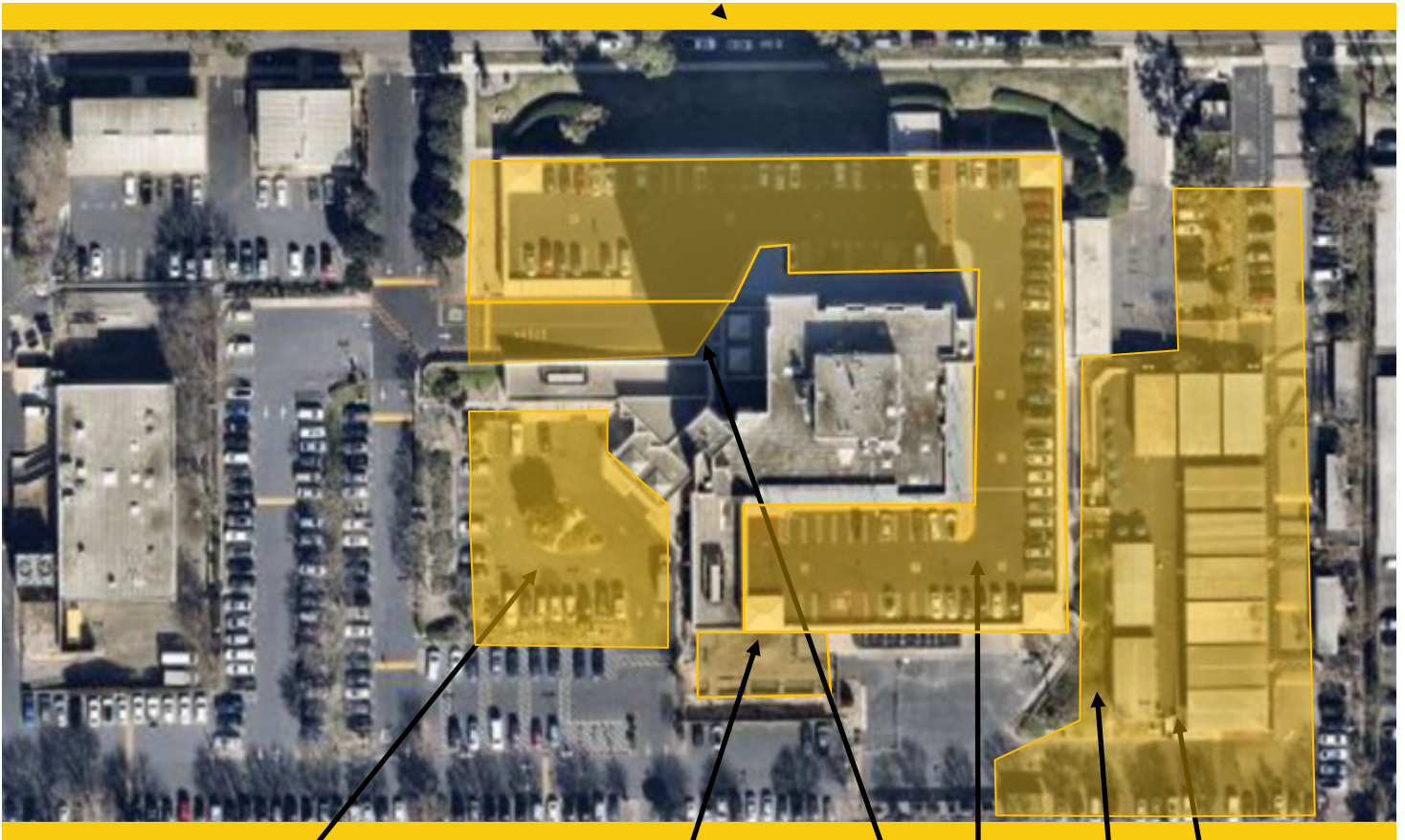
- The Campus Project Team presented a Board Agenda Item for a recommendation to the Board of Trustees for the selected Architect of Record at the second meeting of the month. If approved, the District will execute the contract. Design Phase activities are anticipated to start in earnest over the summer.



Softball Field Improvements — Project site

AERIAL VIEW — ANAHEIM CAMPUS PROJECTS

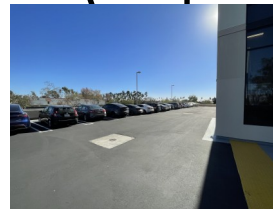
1830 W. ROMNEYA DR., ANAHEIM, CA 92801



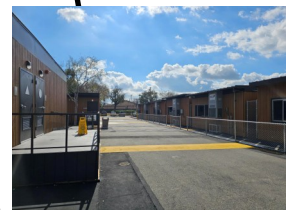
Exterior Green Community Space
Enhancement
[Design Development]



Outdoor Patio Remodel
[Construction]



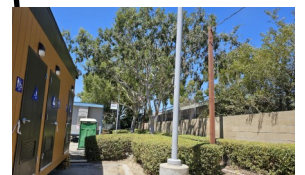
Anaheim Tower First Floor
Life/Safety Renovation
[Close-out]



Restore East Parking Lot
[Design Development]



► Develop Interior and Exterior Signage
[Implementation]



Swing Space Projects / Interim
Housing
[Dismantling]



PROJECT STATUS REPORT — ANAHEIM CAMPUS

SWING SPACE PROJECTS / INTERIM HOUSING

DISMANTLING

Project Manager	Matt Pirayeh Senior Project Manager
Architect of Record	SVA Architects, Inc.
General Contractor	RT Contractor Corp
Project Delivery Method	Design-Bid-Build
Project Square Footage	9,500 SF
DSA Application A#	04-120893



Project Overview

Prior to the start of the Anaheim Tower First Floor Life/Safety Renovation project, involving repairs due to water intrusion at the upper deck parking lot, most first-floor activities were relocated to temporary classrooms and facilities located at the East Parking Lot of the Anaheim-NOCE Campus. Approximately 14 new temporary modular buildings were procured for NOCE's ongoing instruction and administrative activities. Relocation activities will ensue from the Euclid Center, Building B, and Swin Space — Interim Housing in phases between May and August 2025.

Budget & Construction Costs

- Total Project Budget.....\$3,351,335
- Funding Source.....Measure J & Local
- Measure J.....\$1,600,000
- Local.....\$1,931,335

Schedule

- Construction Start.....April 17, 2023
- Construction Completion.....November 2023
- Anticipated Dismantlement.....Summer 2025



PROJECT STATUS REPORT — ANAHEIM CAMPUS

SWING SPACE—HOTEL, RESTAURANT, AND CULINARY ARTS

BIDDING

Project Manager	Anne Acurso Project Manager
Architect of Record	HPI Architecture
General Contractor	Lot 1: OrangeBlue KBD: Coelho, Inc.
Project Delivery Method	Design-Bid-Build
Project Square Footage	1,920 SF
DSA Application A#	04-121647 Kitchen 04-121568 Lot 1



Project Overview

Prior to the start of the Anaheim Tower First Floor Life/Safety Renovation project that involved water intrusion and building durability repairs, the Hotel, Restaurant, and Culinary Arts Department was temporarily relocated to NOCE - Cypress Campus to accommodate instructional activities for the duration of construction. Temporary buildings dedicated for this department were established and outfitted with equipment to support instruction. The return of faculty, personnel and instruction activities are planned to Cypress Bistro with the completion of construction for the Anaheim Tower Life/Safety Renovation project.

Budget & Construction Costs

- Total Project Budget.....\$3,800,000
- Funding Source.....Measure J & Capital Outlay
 - Measure J\$2,500,000
 - Capital Outlay.....\$1,300,000

Schedule — Parking Lot 1

- Estimated Construction Start.....May 2023
- Construction CompletionAugust 2023

Schedule— Kitchen, Bathroom and Dining Room

- Estimated Construction StartAugust 2023
- Construction CompletionJanuary 2024
- Anticipated Dismantlement Start.....May 2025
- Anticipated Dismantlement Completion.....November 2025



PROJECT STATUS REPORT — ANAHEIM CAMPUS

DEVELOP INTERIOR AND EXTERIOR SIGNAGE

IMPLEMENTATION

Project Manager	Cora Baldovino Project Manager Facilities, Planning, Maintenance and Construction Contracts
Architect of Record	Westberg White
Specialty Contractor	KYA Group Inc.
Project Delivery Method	Design-Bid-Build
Project Square Footage	N/A
DSA Application A#	04-121174



Project Overview

New exterior signage will be installed to update the existing marquee signage located off Romneya Drive. NOCE signage will be added above the canopy at the Tower’s main entrance points, and placed on the north facing wall. On the interior, directory and directional signage are planned to be updated next to elevators at each floor.

- Total Project Budget\$1,146,431
- Funding SourceMeasure J & Local
 - Measure J\$1,087,431
 - Local\$59,000
- Project Gross Square Footage.....N/A
- Construction Start.....August 2023
- Targeted Construction CompletionSummer 2025



PROJECT STATUS REPORT — ANAHEIM CAMPUS

ANAHEIM TOWER FIRST FLOOR LIFE/SAFETY RENOVATION CLOSE-OUT

Project Manager	Matt Pirayeh Senior Project Manager
Architect of Record	SVA Architects, Inc.
General Contractor	PCL Construction
Project Delivery Method	Design-Bid-Build
Project Square Footage	61,952 ASF
DSA Application A#	04-120973



Project Overview

The Anaheim Tower First Floor Life/Safety Renovation project includes renovations to improve the building's durability by mitigating water intrusion issues. Also completed were enhancements to the parking areas and an accessible path of travel to the main Tower.

Budget & Construction Costs

- Total Project Budget.....\$10,266,629
- Funding Source.....Measure J, State & RDA
- Measure\$2,560,440
- State.....\$7,059,000
- RDA.....\$647,189

Schedule

- Construction Start.....February 2024
- Construction Completion.....December 2024



PROJECT STATUS REPORT — ANAHEIM CAMPUS

OUTDOOR PATIO REMODEL CONSTRUCTION

Project Manager	Cora Baldovino Project Manager Facilities, Planning, Maintenance and Construction Contracts
Architect of Record	PBK Architects
General Contractor	All-American Building Services, Inc.
Project Delivery Method	Design-Bid-Build
Project Square Footage	2,000 SF
DSA Application A#	04-123306



Project Overview

Updates are scheduled to the existing outdoor patio on the Tower's south end where students, faculty, and staff may congregate and hold events. The project includes the demolition of the existing patio to make way for a large canopy shade structure to cover built in tables with charging ports, ceiling fans, and ventilation to provide building users with an enhanced space for learning and beyond.

Budget & Construction Costs

- Total Project Budget.....\$1,382,500
- Funding Source.....Measure J

Schedule

- Construction Start.....November 2024
- Targeted Construction Completion.....June 2025

Allowances Status					
	In Contract		Approved		Balance
Allowances	\$ 100,000	\$	47,095	47%	\$ 52,905 53%



PROJECT STATUS REPORT — ANAHEIM CAMPUS

EXTERIOR GREEN COMMUNITY SPACE ENHANCEMENT DESIGN DEVELOPMENT

Project Manager	Cora Baldovino Project Manager Facilities, Planning, Maintenance and Construction Contracts
Architect of Record	PBK Architects
General Contractor	TBD
Project Delivery Method	Design-Bid-Build
Project Square Footage	Approximate 10,000 SF
DSA Application A#	TBD



Project Overview

This greenspace will foster social gatherings in a grand quad with amphitheater seating for special events like commencement. Americans with Disabilities Act (ADA) improvements are included in the project scope of work for accessibility of all users.

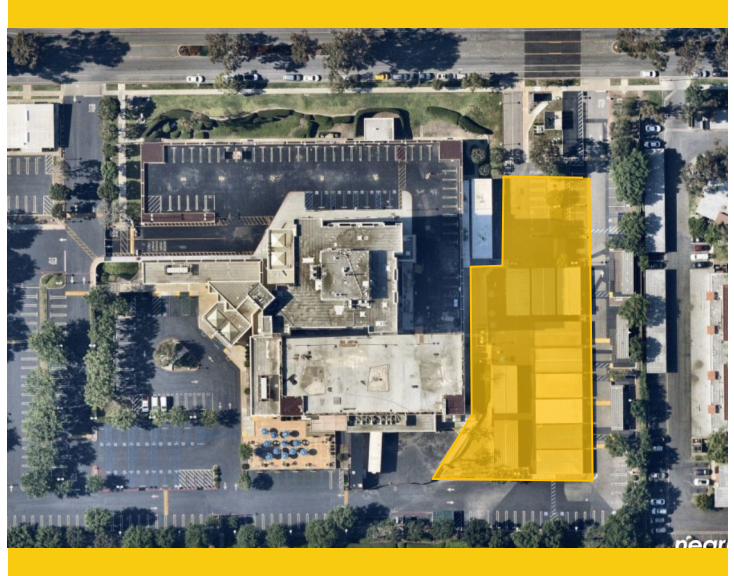
- Total Project Budget\$4,838,537
- Funding SourceMeasure J & Local
 - Measure J\$1,839,00
 - Local Funds.....\$2,999,537
- Estimated Construction Start.....February 2026
- Targeted Construction CompletionSummer 2026



PROJECT STATUS REPORT — ANAHEIM CAMPUS

RESTORE EAST PARKING LOT DESIGN DEVELOPMENT

Project Manager	Cora Baldovino Project Manager Facilities, Planning, Maintenance and Construction Contracts
Architect of Record	PBK Architects
General Contractor	TBD
Project Delivery Method	Design-Bid-Build
Project Square Footage	Approximate 19,384 SF
DSA Application A#	TBD



Project Overview

This project will restore the East Parking Lot to its original use after dismantling the temporary classrooms that were in operation for the duration of the Anaheim Tower First Floor/Life Safety Renovation project.

- Total Project Budget\$1,622,560
- Funding SourceMeasure J
- Estimated Construction Start.....September 2025
- Targeted Construction CompletionJanuary 2026



PROJECT STATUS REPORT — ANAHEIM CAMPUS

UPDATE/IMPROVE INFRASTRUCTURE

VARIOUS STAGES

Address	1830 W. Romneya Dr.	Total Project Budget	\$1,766,540 (Measure J)
	Anaheim, CA 92801	Total Budget Allocated	\$1,541,602 (Measure J)
Number of Projects	4	Funding Source	Measure J & Capital Outlay

General Overview

The projects will address infrastructure improvements or upgrades throughout the campus. Funds are allocated to projects as needs are identified.



PROJECT STATUS REPORT — ANAHEIM CAMPUS

Swing Space — Interim Housing

March — May

- MAAS Companies, Inc., in coordination with the Campus Project Team is addressing the return of faculty and personnel to the Anaheim Tower from the Euclid Center, print shop at the Building B swing space, and the Swing Space — Interim Housing to the Anaheim Tower. The three relocated areas are planned to return to the main tower in phases over the coming months.

Swing Space — Hotel, Restaurant, and Culinary Arts (HRC)

March

- There are no updates available for this reporting period.

April — May

- As the Anaheim Tower First Floor Life/Safety Renovation project has reached its conclusion, the Swing Space — Hotel, Restaurant, and Culinary Arts (HRC) will be restored to a yard with the removal of the temporary buildings that were in use for the duration of construction activities for the aforementioned project.
- The project is undergoing the bidding process to select a general contractor to dismantle the yard, including utility connections. A mandatory job walk took place on April 29 where 10 interested firms were in attendance. All final proposals are anticipated to be received electronically via PlanetBids on May 19.

Develop Interior and Exterior Signage

March

- Crews installed the decorative metal panels for the large wall branding signage along the parking deck at Romneya Drive. Samples of the metal letters were reviewed by the Design Team prior to installation.
- The existing marquee signage located at Romneya Drive was demolished. Revisions to the new signage shop drawings were made in the third week of March and were sent to the Design Team for review and approval.
- Samples of the North Orange Continuing Education (NOCE) canopy letters were later delivered for agreement by the Architect of Record prior to proceeding with installation.



**Develop Interior And Exterior Signage —
Completed NOCE North Facing Wall Branding Signage**



PROJECT STATUS REPORT — ANAHEIM CAMPUS

April — May

- Excavation of the footings to make way for the new marquee signage began in late May. Reinforcement bar cages were delivered on site and later set in place to begin the process of establishing the footings for the new marquee. Concrete will be poured for the marquee foundation on May 28. Installation of the new marquee footing and frame are planned to start on June 3.
- Fabrication of the marquee signage letters has been completed and installation began in the week of May 26.
- Fabrication of the NOCE lettering on the north-facing wall has been completed and installation was completed over the third week of May. Electrical activities followed to light the letters.

Anaheim Tower First Floor Life/Safety Renovation

March — May

- Financial close-out was underway in March and April. At the state, the project is undergoing DSA certification and authorization from the California Community Colleges Chancellor's Office for final close-out.
- A Notice of Completion for the project was presented to the Board of Trustees at the first meeting in May. The Notice of Completion will be filed with the Orange County Clerk-Recorder, triggering the 30-day time frame for the District to dispense the final retention release to PCL Construction.



Outdoor Patio Remodel

Anaheim Tower First Floor Life/Safety Renovation— Parking Deck in Use

March

- The canopy steel posts and overhead shade system arrived on-site in the second week of March and were promptly installed. Crews moved forward with installing sheet metal panels. Grading for the upcoming concrete pour began. Relocation of the underground fire line was completed.
- The Kalwall panels to modulate the natural light at the shade structure remained in fabrication .
- The Campus Project Team coordinated with the general contractor and Architect of Record to address elevation changes at the south Culinary Arts door to improve upon safety and accessibility.



PROJECT STATUS REPORT — ANAHEIM CAMPUS



**Outdoor Patio Remodel —
Installed Translucent Kalwall Panels**

April — May

- The canopy steel post and overhead shade system were installed. Additionally, grading for the concrete pour was completed.
 - The shade structure base was installed and compacted prior to the start of concrete footing pours. The metal railings were prepared for painting. Electricians were on-site to run conduits for the lighting, data, and power for the fans.
 - Slab on grade concrete pours took place on May 9 and 16 to complete the flooring work. Painting activities will begin upon its conclusion.
 - Furniture for the site including tables were delivered and installed the end of May.
- Fabrication for the translucent panels has been completed and is expected to be installed in the third week of May. Substantial completion is now tracking for June.

Exterior Green Community Space Enhancement

March - May

- Meetings took place between NOCE Leadership and the Campus Project Team to develop a preliminary assessment of the scope of work. On February 6, the Building User Group met with the Architect of Record and the landscape consultants, during which three options were discussed. At the end of the meeting, the Building User Group (BUG) opted for a design that combined features from two of the presented options. A follow up meeting took place in mid-March to view a two-dimensional rendering of the selected path forward for the Building User Group's consideration.
- The Campus Project Team worked closely with the City of Anaheim to reach a resolution for the vehicular drop-off areas and fire access roads that meets the City's requirements.
- The project entered the Design Development phase and the Design Team provided a three dimensional rendering for review with the Building User Group.
- The Design Development estimate was received from PBK Architects that remained under review by the Campus Project Team. The next cost estimate is expected to be released during the Construction Documents phase.



PROJECT STATUS REPORT — ANAHEIM CAMPUS

Restore East Parking Lot

March — May

- Meetings with the Building User Group began in March to determine the prospective uses and functions of the new parking space area. The project remained in Schematic Design until late April, after which the project entered Design Development.
- Work on the Construction Documents phase is expected to begin in late spring with the completed submittal anticipated to be provided to DSA in mid-summer. The Campus Project Team is considering two avenues of DSA review that would involve a lengthier process to support other active projects or an expedited review. A determination will be made prior to making a submittal to the state.





COMPLETED PROJECTS

- CYPRESS CAMPUS
- FULLERTON CAMPUS
- NOCE—ANAHEIM CAMPUS & DISTRICT OFFICES



COMPLETED PROJECTS

Cypress Campus

Project Name	Funding Sources	Final Project Cost	Completion Date	Completion Picture
Swing Space Projects - Gym II Improvements	Measure J	\$124,683	July 2018	
Swing Space Projects - Parking Lot 5 Realignment	Measure J	\$2,001,369	September 2018	
Mass Communications & Security Systems Upgrade: Safety Film	Measure J	\$145,772	January 2019	
Mass Communications & Security Systems Upgrade: Door Replacement	Measure J	\$50,898	January 2019	
Update / Improve Infrastructure: Central Plant Upgrades	Measure J	\$58,768	October 2020	
Baseball Field Improvements	Measure J Local	\$1,920,904 \$159,467	May 2021	
New Science, Engineering, and Mathematics Building	Measure J Local Federal Schedule Maint.	\$92,095,385 \$3,000,000 \$791,352 \$49,281	September 2021	



COMPLETED PROJECTS

Cypress Campus (continued)

Project Name	Funding Sources	Final Project Cost	Completion Date	Completion Picture
Update / Improve Infrastructure (New SEM)	Measure J	\$2,805,131	September 2021	
Update / Improve Infrastructure (IT-New SEM)	Measure J	\$645,883	September 2021	
Mass Communications & Security Systems Upgrade (New SEM)	Measure J	\$389,367	September 2021	
New Veterans' Resource Center / Student Activities Center Expansion	Measure J Local	\$12,071,766 \$89,764	July 2021	
Update / Improve Infrastructure (VRC/SAC)	Measure J	\$1,077,912	July 2021	
Update / Improve Infrastructure (IT-VRC/SAC)	Measure J	\$181,761	July 2021	
Mass Communications & Security Systems Upgrade (VRC/SAC)	Measure J	\$60,938	July 2021	



COMPLETED PROJECTS

Cypress Campus (continued)

Project Name	Funding Sources	Final Project Cost	Completion Date	Completion Picture
Veterans' Memorial Bridge, Plaza, and Tribute Garden	Local	\$1,365,397	July 2021	
Pond Refurbishment	Local	\$623,873	July 2021	
Swing Space - Fine Arts (OLD SEM)	Measure J	\$3,748,140	June 2023	
LLRC Secondary Data Center-Phase II	Measure J	\$473,716	August 2023	
Campus-Wide Security Systems Update (Phase I)	Measure J	\$313,541	August 2023	
Update/Improve Infrastructure (IT)	Measure J Local	\$3,421,310 \$3,780,256	May 2024	



COMPLETED PROJECTS

Fullerton Campus

Project Name	Funding Sources	Final Project Cost	Completion Date	Completion Picture
Update and Improve Infrastructure / Buildings 300 -500 Sewer Line	Measure J Scheduled Maint.	\$444,702 \$85,559	July 2020	
Greenhouse Replacement	Measure J Local	\$398,664 \$989,272	August 2021	
Central Plant Replacement & Expansion	Measure J	\$9,004,296	September 2021	
New Instructional Building	Measure J Local	\$50,139,383 \$828,489	March 2022	
Update/Improve Infrastructure (IT-New Instructional Building)	Measure J	\$278,982	March 2022	
Swing Space - New M&O	Measure J	\$150,000	November 2023	
Update/Improve Infrastructure (IT)	Measure J Local	\$7,571,018 \$4,308,585	May 2024	



COMPLETED PROJECTS

NOCE—Anaheim Campus & District Offices

Project Name	Funding Sources	Final Project Cost	Completion Date	Completion Picture
5th Floor CTE Laboratory and 2nd Floor Room 215	Measure J	\$640,736	September 2018	
7th and 10th Floors Buildout	Measure J Measure X	\$915,972 \$4,285,592	June 2019	
Secondary MDF Room	Measure J	\$97,250	March 2021	
Swing Space – Interim Housing	Measure J Local	\$1,600,000 \$1,931,335	December 2023	
Update/Improve Infrastructure Swing Space — Interim Housing	Measure J	\$669,290	November 2023	
Update/Improve Infrastructure (IT)	Measure J Local	\$775,062 \$4,896,073	November 2023	
Update/Improve Infrastructure (IT) - AEBG & AZ	Local	\$199,706	May 2024	
Swing Space—Hotel, Restaurant, and Culinary Arts	Measure J Local	\$2,500,000 \$1,300,000	July 2024	



FINANCIAL REVIEW

- Capital Projects Update
- Estimated Project Budgets
- 90-Day Look Ahead Schedule



CAPITAL PROJECT UPDATES

**North Orange County Community College District
Measure J
Capital Projects Update
As of April 30, 2025**

Bond Authorization:

Bond Authorization	574,000,000	100.00%
Bonds Sold - Series A + B + C	400,000,000	69.69%
Available Principal Amount of Bonds	174,000,000	30.31%

Bond Funding Sources (Budget):

		Actual Received	Remaining Balance
Bond Authorization	574,000,000	400,000,000	174,000,000
Estimated Interest Earnings*:	31,000,000	29,301,911	1,698,089
Total Estimated:	605,000,000	429,301,911	175,698,089
Less Cost of Interest	800,000	604,208	195,792
Total Available for allocation:	604,200,000	428,697,703	175,502,297

Cost Status:

Campus	Total Budget	%	Actual Expenses to Date	Remaining Balance
Anaheim Campus	23,377,800	3.86%	9,384,252	13,993,548
Cypress Campus	231,451,200	38.31%	139,368,456	92,082,744
Fullerton Campus	321,126,400	53.15%	107,168,801	213,957,600
District Expenses				
• Program Management	20,000,000	3.31%	11,732,797	8,267,203
• Bond Issuance Cost	3,544,600	0.59%	2,048,689	1,495,911
• Holding Account	4,700,000	0.78%	-	4,700,000
Totals	604,200,000	100.00%	269,702,995	334,497,005



ESTIMATED PROJECT BUDGETS

CYPRESS CAMPUS

CURRENT PROJECTS

PROJECT BUDGET/VARIANCE REPORT—CYPRESS

CURRENT PROJECTS	Measure J Budget JAN FY 2024-25	Measure J Budget APR FY 2024-25	Variance	Measure J Expenses APR FY 2024-25	Balance
Fine Arts Building Renovation	\$ 56,400,871	\$ 56,400,871	\$ -	\$ 16,708,565	\$ 39,692,306
Softball Field Renovations	\$ 4,000,000	\$ 4,000,000	\$ -	\$ 143,216	\$ 3,856,784
Update/Improve Infrastructure	\$ 5,162,876	\$ 5,162,876	\$ -	\$ -	\$ 5,162,876
LLRC Exterior Patio	\$ 1,287,000	\$ 1,287,000	\$ -	\$ 26,400	\$ 1,260,600
Central Plant Upgrade	\$ 4,000,000	\$ 4,000,000	\$ -	\$ -	\$ 4,000,000
Mass Communications & Security Systems Upgrade	\$ 1,942,628	\$ 1,942,628	\$ -	\$ -	\$ 1,942,628
Pool Restoration and Upgrade	\$ 5,500,000	\$ 5,500,000	\$ -	\$ -	\$ 5,500,000
Health Sciences Tech Ed III Renovation	\$ 26,126,990	\$ 26,126,990	\$ -	\$ -	\$ 26,126,990
EV SCE Charging Stations	\$ 492,000	\$ 492,000	\$ -	\$ 337,894	\$ 154,106
Planning (Non Project Specific)	\$ 4,875,125	\$ 4,875,125	\$ -	\$ 572,514	\$ 4,302,611
COMPLETED PROJECTS					
Swing Space Fine Arts (Old SEM)	\$ 3,748,140	\$ 3,748,140	\$ -	\$ 3,748,140	\$ -
Update/Improve Infrastructure (IT)	\$ 3,421,310	\$ 3,421,310	\$ -	\$ 3,421,310	\$ -
New Science, Engineering, and Mathematics Building	\$ 92,095,385	\$ 92,095,385	\$ -	\$ 92,011,542	\$ 83,843
Update/Improve Infrastructure (New SEM)	\$ 2,805,131	\$ 2,805,131	\$ -	\$ 2,805,131	\$ -
Mass Communications & Security Systems Upgrade (New SEM)	\$ 389,367	\$ 389,367	\$ -	\$ 389,367	\$ -
Update/Improve Infrastructure (IT - New SEM)	\$ 645,883	\$ 645,883	\$ -	\$ 645,883	\$ -
New Veterans' Resource Center & Student Activities Center Expansion	\$ 12,071,766	\$ 12,071,766	\$ -	\$ 12,071,766	\$ -
Update/Improve Infrastructure (VRC/SAC)	\$ 1,077,912	\$ 1,077,912	\$ -	\$ 1,077,912	\$ -
Mass Communications & Security Systems Upgrade (VRC/SAC)	\$ 60,938	\$ 60,938	\$ -	\$ 60,938	\$ -
Update/Improve Infrastructure (IT - VRC/SAC)	\$ 181,761	\$ 181,761	\$ -	\$ 181,761	\$ -
Baseball Field Improvements	\$ 1,920,904	\$ 1,920,904	\$ -	\$ 1,920,904	\$ -
Update/Improve Infrastructure (Central Plant Enhancements)	\$ 58,768	\$ 58,768	\$ -	\$ 58,768	\$ -
Swing Space - Parking Lot 5 Expansion	\$ 2,001,369	\$ 2,001,369	\$ -	\$ 2,001,369	\$ -
Swing Space - Gym II Renovation	\$ 124,683	\$ 124,683	\$ -	\$ 124,683	\$ -
Swing Space - Old SEM (Roofing)	\$ 76,467	\$ 76,467	\$ -	\$ 76,467	\$ -
Mass Communications & Security Systems Upgrade (Safety Film)	\$ 145,772	\$ 145,772	\$ -	\$ 145,772	\$ -
Mass Communications & Security Systems Upgrade (Door Replacement)	\$ 50,898	\$ 50,898	\$ -	\$ 50,898	\$ -
LLRC Secondary Data center - Phase II	\$ 473,716	\$ 473,716	\$ -	\$ 473,716	\$ -
Campus-Wide Security Systems Upgrade (Phase 1)	\$ 313,541	\$ 313,541	\$ -	\$ 313,541	\$ -
SUB TOTAL	\$ 231,451,200	\$ 231,451,200	\$ -	\$ 139,368,456	\$ 92,082,744



ENCUMBRANCES OVER \$10,000

CYPRESS CAMPUS - New Encumbrances (Mar. 2025 - May 2025)

Project	Vendor	Purchase Order No.	Purchase Order Amount	Scope of Work
Fine Arts Building Renovation	Best Contracting Services	P0164848	(\$62,399.00)	Value Engineering; Temporary Waterproofing; Detail Revisions
Fine Arts Building Renovation	Condon-Johnson & Associates Inc.	P0164715	(\$936,267.00)	Value Engineering for Pile Cap Connection
Fine Arts Building Renovation	Condon-Johnson & Associates Inc.	P0164715	(\$13,990.00)	Back-charge for Plaster and Camera Damage
Fine Arts Building Renovation	Inland Building Companies Inc.	P0164711	\$232,660.00	Site Paving and Grading for Landscape Areas; Dowel Installation
Fine Arts Building Renovation	Inland Building Companies Inc.	P0164711	\$21,223.00	Additional Beam Installation; Proceed with Demolition and Concrete Removal
Fine Arts Building Renovation	Inland Building Companies Inc.	P0164711	\$224,467.00	Value Engineering; ADA Parking Recompaction; Existing Storm Drain Installation
Fine Arts Building Renovation	Velocity Glazing	P0164545	(\$25,512.00)	Scope Transfer of Window Glazing to Another Prime
Fine Arts Building Renovation	Verne's Plumbing Inc.	P0164544	\$45,286.00	Temporary Waterproofing
Fine Arts Building Renovation	BAPKO Metal Inc.	P0165073	(\$104,011.00)	Value Engineering Credit for Elevator and Foyer Guardrail
Fine Arts Building Renovation	AJ Kirkwood & Associates Inc.	P0164536	(\$586,742.00)	Value Engineering Light Fixture Deduct; Site Utilities
Fine Arts Building Renovation	Bayview Services	P0164713	(\$42,567.00)	Value Engineering for Demolition, Recompaction
Fine Arts Building Renovation	Ninyo & Moore Geotechnical and Environmental Sciences	P0163437	\$100,000.00	Additional Geotechnical for Special Inspection and Material Testing Services



ESTIMATED PROJECT BUDGETS

FULLERTON CAMPUS

CURRENT PROJECTS

PROJECT BUDGET/VARIANCE REPORT—FULLERTON

CURRENT PROJECTS	Measure J Budget JAN FY 2024-25	Measure J Budget APR FY 2024-25	Variance	Measure J Expenses APR FY 2024-25	Balance
Renovate Buildings 300	\$ 22,982,000	\$ 22,982,000	\$ -	\$ 6,346,155	\$ 16,635,845
New M & O Building	\$ 6,399,604	\$ 6,399,604	\$ -	\$ 3,990,524	\$ 2,409,080
Student Support Center	\$ 28,302,917	\$ 28,302,917	\$ -	\$ 21,151,894	\$ 7,151,023
New Performing Arts Complex—Demolish Buildings 1100 and 1300	\$ 92,005,166	\$ 92,005,166	\$ -	\$ 2,547,106	\$ 89,458,060
Wilshire Chiller Plant Relocation	\$ 14,772,894	\$ 14,772,894	\$ -	\$ 8,020,144	\$ 6,752,750
Softball Field Improvements	\$ 7,000,000	² \$ 7,000,000	\$ -	\$ 30,000	\$ 6,970,000
New Welcome Center & Lot C West	\$ 39,000,000	\$ 39,000,000	\$ -	\$ -	\$ 39,000,000
New Horticulture/Lab School/STEM Lab	\$ 25,167,636	\$ 25,167,636	\$ -	\$ -	\$ 25,167,636
Update/Improve Infrastructure	\$ 10,630,486	\$ 10,630,486	\$ -	\$ -	\$ 10,630,486
Update/Improve Infrastructure (SS - New M&O)	\$ 150,000	\$ 150,000	\$ -	\$ 114,906	\$ 35,094
New Parking Structure	\$ 6,219,260	\$ 6,219,260	\$ -	\$ -	\$ 6,219,260
Planning (Non Project Specific)	\$ 659,392	¹ \$ 683,764	\$ 24,372	\$ 369,672	\$ 314,092
COMPLETED PROJECTS					
Update/Improve Infrastructure (IT)	\$ 7,571,018	\$ 7,571,018	\$ -	\$ 4,356,745	\$ 3,214,273
New Instructional Building	\$ 50,139,383	¹ \$ 50,115,010	\$ (24,372)	\$ 50,115,010	\$ -
Central Plant Replacement & Expansion	\$ 9,004,296	\$ 9,004,296	\$ -	\$ 9,004,296	\$ -
Greenhouse Replacement	\$ 398,664	\$ 398,664	\$ -	\$ 398,664	\$ -
Update/Improve Infrastructure (IT - Instructional Bldg.)	\$ 278,982	\$ 278,982	\$ -	\$ 278,982	\$ -
Update/Improve Infrastructure (Bldg. 300-500 Sewer Line)	\$ 444,702	\$ 444,702	\$ -	\$ 444,702	\$ -
SUB TOTAL	\$ 321,126,400	\$ 321,126,400	(0)	\$ 107,168,801	\$ 213,957,599

1. Budget Transfer Request 2025-057 FC MJ from New Instructional Building Project due to energy rebates to Planning FC (Non-Project Specific) Project.

2. Budget Transfer Request 2025-058 FC name change from Athletic Field Improvements to Softball Field Improvements.



ENCUMBRANCES OVER \$10,000

FULLERTON CAMPUS - New Encumbrances (Mar. 2025 - May 2025)

Project	Vendor	Purchase Order No.	Purchase Order Amount	Scope of Work
New Horticulture/Lab School/STEM lab	MAAS Companies Inc.	Pending	\$71,440	Project Management Services
New M&O Building	AllSteel Inc.	P0172268	\$140,878.26	Furniture, Fixtures, & Equipment
New M&O Building	Krueger International Inc.	P0172343	\$183,872.17	Furniture, Fixtures & Equipment
New M&O Building	Ollivier Corporation	P0172826	\$88,255.57	Access Control Hardware and Building Surveillance Infrastructure
New M&O Building	Sasco Electric	P0173101	\$33,567.16	Cabling for Security Cameras And Access Control
New M&O Building	VectorUSA	P0171071	\$14,730.64	Network Cabling for , Network Switching, Wireless Access Points, Materials, and UPS Equipment
New M&O Building	Geotechnical Solutions Inc.	P0162242	\$15,000.00	Additional Geotechnical Services
New M&O Building	Geotechnical Solutions Inc.	P0162242	\$10,000.00	Additional Geotechnical Services
New M&O Building	Pringle Group	Pending	\$40,000.00	DSA Project Inspector Services
New Performing Arts Complex	Vital Inspection Services, Inc.	P0173535	\$594,000.00	Inspector of Record Services
New Performing Arts Complex	Arthur J. Gallagher & Company Insurance Brokers of CA Inc.	Pending	\$1,680,000.00	Owner Controlled Insurance Program Enrollment
New Performing Arts Complex	Fenagh Engineering and Testing	Pending	\$346,586.90	Laboratory of Record Services
New Performing Arts Complex	Ninyo & Moore Geotechnical and Environmental Services	Pending	\$158,460.00	Geotechnical Services
New Performing Arts Complex	SJ Amoroso Co., LLC	P0173512	\$111,437,000.00	General Contracting Services



ENCUMBRANCES OVER \$10,000

FULLERTON CAMPUS - New Encumbrances (Mar. 2025 - May 2025)

Project	Vendor	Purchase Order No.	Purchase Order Amount	Scope of Work
Student Support Center	Twining Consulting	Pending	\$55,485.00	Additional Laboratory of Record Services
Student Support Center	Allsteel Inc.	P0172320	\$387,571.36	Furniture, Fixtures & Equipment
Student Support Center	Geo-Advantec Inc.	P0160197	\$23,040.00	Geotechnical Monitoring, Materials Testing and Inspection Services
Student Support Center	Krueger International Inc.	P0172339	\$549,614.96	Furniture, Fixtures, & Equipment
Student Support Center	Medline Industries LP	P0172139	\$30,061.86	Diagnostic Wallboard Systems
Student Support Center	Ollivier Corporation	P0172698	\$57,665.41	Building Surveillance Infrastructure
Student Support Center	Corporate Business Interiors Inc.	Pending	\$387,571.36	Furniture, Fixtures & Equipment
Student Support Center	Ollivier Corporation	P0172818	\$33,246.63	Building Surveillance Infrastructure
Student Support Center	Sasco Electric	P0173102	\$40,970.15	Cabling for Security Cameras
Student Support Center	Southern California Gas Co.	P0172766	\$33,674.97	Initial Gas Bill and One Time Ownership Charge
Student Support Center	VectorUSA	P0171072	\$14,576.57	Installation Services for Cabling, Network Switching, Wireless Access Points and UPS Equipment
Student Support Center	Pringle Group	Pending	\$48,000.00	DSA Project Inspector Services
Wilshire Chiller Plant Relocation	O'Connor Construction Management	P0172580	\$28,080.00	Cost Estimating & Scheduling Services
Planning - FC (Non Project Specific)	MAAS Companies, Inc.	Pending	\$53,060.00	Building Utility Assessment
Renovate Building 300	EKC Enterprises, Inc.	P0174140	\$533,548.31	Furniture, Fixtures, & Equipment
Renovate Building 300	Ninyo & Moore Geotechnical and Environmental Sciences	Pending	\$70,523.00	Additional Geotechnical Services



ESTIMATED PROJECT BUDGETS

ANAHEIM CAMPUS

CURRENT PROJECTS

PROJECT BUDGET/VARIANCE REPORT—ANAHEIM

CURRENT PROJECTS	Measure J Budget JAN FY 2024-25	Measure J Budget APR FY 2024-25	Variance	Measure J Expenses APR FY 2024-25	Balance
Swing Space Hotel, Restaurant, and Culinary Arts	\$ 2,500,000	\$ 2,500,000	\$ -	\$ 2,085,783	\$ 414,217
Anaheim Campus Tower First Floor Life/Safety Renovation	\$ 2,560,440	\$ 2,560,440	\$ -	\$ 1,932,538	\$ 627,902
Develop Interior and Exterior Signage	\$ 1,087,431	\$ 1,087,431	\$ -	\$ 230,497	\$ 856,934
Restore East Parking Lot	\$ 1,622,560	\$ 1,622,560	\$ -	\$ -	\$ 1,622,560
Exterior Green Community Space Enhancement	\$ 1,839,000	\$ 1,839,000	\$ -	\$ 39,469	\$ 1,799,531
2nd Floor Lobby Remodel	\$ 813,000	\$ 813,000	\$ -	\$ -	\$ 813,000
Upper Deck Enhancements	\$ 309,901	\$ 309,901	\$ -	\$ -	\$ 309,901
1st. Floor Remodel Student Center and Classrooms	\$ 2,352,720	\$ 2,352,720	\$ -	\$ -	\$ 2,352,720
Pedestrian and Vehicular Traffic Flow	\$ 2,329,000	\$ 2,329,000	\$ -	\$ -	\$ 2,329,000
4th Floor Improvements	\$ 218,000	\$ 218,000	\$ -	\$ -	\$ 218,000
Outdoor Patio Remodel	\$ 1,382,500	\$ 1,382,500	\$ -	\$ 598,857	\$ 783,643
Update/Improve Infrastructure	\$ 224,938	\$ 224,938	\$ -	\$ -	\$ 224,938
Planning (Non Project Specific)	\$ 1,440,000	\$ 1,440,000	\$ -	\$ 16,315	\$ 1,423,685
COMPLETED PROJECTS					
Update/Improve Infrastructure (IT)	\$ 775,062	\$ 775,062	\$ -	\$ 775,062	\$ -
Update/Improve Infrastructure (Swing Space-IH)	\$ 669,290	\$ 669,290	\$ -	\$ 669,290	\$ -
Swing Space Projects/ Interim Housing	\$ 1,600,000	\$ 1,600,000	\$ -	\$ 1,382,484	\$ 217,516
Update/Improve Infrastructure (Secondary MDF)	\$ 97,250	\$ 97,250	\$ -	\$ 97,250	\$ -
7th and 10th Floors Buildout	\$ 915,972	\$ 915,972	\$ -	\$ 915,972	\$ -
5th Floor CTE & 2nd Floor Room 215	\$ 640,736	\$ 640,736	\$ -	\$ 640,736	\$ -
SUB TOTAL	\$ 23,377,800	\$ 23,377,800	\$ -	\$ 9,384,252	\$ 13,993,548



ENCUMBRANCES OVER \$10,000

ANAHEIM CAMPUS - New Encumbrances (Mar. 2025 - May 2025)

Project	Vendor	Purchase Order No.	Purchase Order Amount	Scope of Work
Outdoor Patio Remodel	Valley Pipeline Services Inc.	P0172549	\$58,769.00	Relocate Fire Hydrant Line
Restore East Parking Lot	PBK Architects	P0172669	\$127,500.00	Architectural Services
Swing Space—Interim Housing	MAAS Companies, Inc.	Pending	\$53,060.00	Project Management Support Services
Swing Space—Interim Housing	King Van & Sotrage Inc.	P0172062	\$18,325.00	Relocation Services
Swing Space—Interim Housing	JM&J Contractors	P0174452	\$15,900.00	Selective Demolition of Portables



ESTIMATED PROJECT BUDGETS

DISTRICT

PROJECT BUDGET/VARIANCE REPORT—DISTRICT

DISTRICT WIDE EXPENSE	Measure J Budget JAN FY 2024-25	Measure J Budget APR FY 2024-25	Variance	Measure J Expenses APR FY 2024-25	Balance
Program Management Fees	\$ 20,000,000	\$ 20,000,000	\$ -	\$ 11,732,797	\$ 8,267,203
Bond Issuance Cost	\$ 3,544,600	\$ 3,544,600	\$ -	\$ 2,048,689	\$ 1,495,911
Holding Account*	\$ 4,700,000	\$ 4,700,000	\$ -	\$ -	\$ 4,700,000
SUB TOTAL	\$ 23,544,600	\$ 28,244,600	\$ -	\$ 13,781,486	\$ 14,463,114

* Holding Account Project was moved from Anaheim to the District



ENCUMBRANCES OVER \$10,000

DISTRICT - New Encumbrances (Mar. 2025 - May 2025)

Project	Vendor	Purchase Order No.	Purchase Order Amount	Scope of Work
There are no encumbrances available for this reporting period				



ACTIVE PROJECTS

90 - DAY LOOK AHEAD



NORTH ORANGE COUNTY COMMUNITY COLLEGE DISTRICT
CYPRESS - FULLERTON - ANAHEIM (NOCE)
90-DAY LOOK AHEAD SCHEDULE
(05-01-25 TO 07-31-25)



	May				June				July					Comments
	6	13	20	27	3	10	17	24	1	8	15	22	29	
GENERAL														
NOCCCD Board Meetings														May 13th, 27th, June 10th, 24th, July 22nd (Anaheim Union HS District Board Room)
COC Meetings														June 4th (In Person Meeting at Cypress College)
Bond Program Management Team Meetings														May 20th, June 17th, July 15th (meetings held via Teams)
PROFESSIONAL SERVICES PROCUREMENT - RFP/RFQ														
Softball Field Improvements														
Requests for Proposals for AOR Selection														Complete
Board Agenda Item for Authorization of AOR Selection														Upcoming (Anticipated in Late May)
New Performing Arts Complex														
IOR/LOR/Geotech RFP Process														Complete
Board Agenda Item for Authorization to Enter into Contract with IOR/LOR/Geotech														Complete
New Horticulture/Lab School/STEM Lab														
Requests for Proposals for Planning Architect Selection														In Progress
PLANNING														
FULLERTON														
New Horticulture/Lab School/Stem Lab														Upcoming (Anticipated in June)
DESIGN PHASE														
ANAHEIM														
Exterior Green Community Space Enhancement														
Schematic Design														Complete
Design Development														In Progress
Construction Documents														Upcoming (Anticipated in June)
Restore East Parking Lot														
Schematic Design														In Progress
Design Development														In Progress
Construction Documents														Upcoming (Anticipated in July)
CYPRESS														
LLRC Exterior Patio														
Design Development														In Progress
Construction Documents														Upcoming (Anticipated in June)
Softball Field Renovations														
Design Development														Complete
Construction Documents														In Progress
Central Plant Upgrade														
Programming Validation														In Progress
Schematic Design														In Progress
FULLERTON														
Softball Field Improvements														
Schematic Design														Upcoming (Anticipated in June)
Design Development														Upcoming (Anticipated in June)
Construction Documents														Upcoming (Anticipated in July)
DSA PHASE & AGENCY REVIEW														
FULLERTON														
New Performing Arts Complex														
California Community Colleges Chancellor's Office Submittal														Complete
CYPRESS														
Softball Field Renovations														
DSA Review														Upcoming (Anticipated in July)



ACTIVE PROJECTS

90 - DAY LOOK AHEAD



NORTH ORANGE COUNTY COMMUNITY COLLEGE DISTRICT
CYPRESS - FULLERTON - ANAHEIM (NOCE)
90-DAY LOOK AHEAD SCHEDULE
 (05-01-25 TO 07-31-25)



	May				June			July				Comments		
	6	13	20	27	3	10	17	24	1	8	15		22	29
BIDDING														
FULLERTON														
New Performing Arts Complex														
Selection Process														Complete (Prequalified General Contractors and Bid Evaluation)
Board Agenda Item														Complete (Authorization to Enter into Contract with Prequalified GC)
ANAHEIM														
Swing Space - HRC - General Contractor Selection														In Progress
PRE-CONSTRUCTION PHASE														
New Performing Arts Complex														
Notice to Proceed with Construction														Complete (Issued on May 12, 2025)
Mobilization and Site Logistics Set-up														In Progress (Mobilization and Site Perimeter Fencing on May 13, Site Logistics;
Temporary Sculpture Relocation														In Progress (Temporary Sculpture Relocation; Excavation Upcoming)
CONSTRUCTION PHASE														
ANAHEIM														
Swing Space - Interim Housing														
Admissions and Food Pantry														Upcoming (Anticipated in Late May)
Remaining Temporary Modular Buildings														Upcoming (Anticipated in Late May)
Euclid Center														Upcoming (Anticipated in Early June)
Print Shop from Building B														Upcoming (Anticipated in Mid-June)
Outdoor Patio Remodel														
Foundation Work														
Rebar Cage Installation														Complete
Foundation Concrete Work														Complete
Steel Structure														
Steel Structure, Roof and Ceiling Work														Complete
Kalwall Panel Fabrication, Delivery, and Installation														In Progress
Develop Interior and Exterior Signage														
Fabrication of Canopy Letters & Support														In Progress
Marquee Signage (Production/Fabrication/Installation)														In Progress
Marquee Signage (Demolition)														Complete
Marquee Foundation Construction														In Progress (Marquee Signage Footing Excavation and Installation)
Metal Wall Branding Signage Fabrication/Installation														In Progress (Metal Letter Fabrication in May and Letter Installation in June)
CYPRESS														
Fine Arts Building Renovation														
Building Enclosure														
Roof														In Progress (Sheet Metal Work on Fire Pump Enclosure, Primer, Insulation, and PVC Roofing to Elevator Roof)
Window Activities														In Progress (Flashing and Window Installation, Glazing, and Louvers Installation at North, South, East, West)
Exterior Improvements														
Humanities - West Path of Travel														Upcoming (Anticipated in Late May for Concrete Removal, Fencing Installation, ADA Improvements, Asphalt Paving and Curing)
Kiln Yard														In Progress (Slab on Grade Concrete Pour, Kiln Installation, and Gate Installation)
Generator & Fire Pump Room														In Progress (Install Fireproofing on Deck and Beams, Install Fire Pump, Piping, and Gates)
Site Work														In Progress (Preparations for Grading; Hardscaping; Irrigation Sleeve Placement Upcoming in South; Flatwork Upcoming at West, East)
Interior Improvements														
Wall Framing														Complete
Door Frames														In Progress (On Stairs and BDF)
Drywall Installation & Taping														In Progress (Levels 2 and 1 Classrooms and Lobby)
Overhead Mechanical Duct Rough-in														In Progress (On First and Second Floors at Classrooms, Restrooms, Lobby)
In-Wall Mechanical Electrical and Plumbing Installation														In Progress (On the First Floor at Classrooms, Restrooms, Lobby)
BDF and IDF Rooms														In Progress (Installation on All Levels for Painting; Switch, Cable, Electrical and Plumbing in Wall, Door Frames, Insulation Installation)
Finishes														In Progress (MEP Finishes At All Levels and Kiln Yard; Flooring at Mezzanine)



ACTIVE PROJECTS

90 - DAY LOOK AHEAD



NORTH ORANGE COUNTY COMMUNITY COLLEGE DISTRICT
CYPRESS - FULLERTON - ANAHEIM (NOCE)
90-DAY LOOK AHEAD SCHEDULE
 (05-01-25 TO 07-31-25)



	May				June				July				Comments
	6	13	20	27	3	10	17	24	1	8	15	22	29
CONSTRUCTION PHASE													
FULLERTON													
Renovate Building 300													
Superstructure - Structural Improvements													
Fiber Reinforced Polymer (FRP) Installation													
Interior Improvements													
Wall Framing													
Mechanical, Electrical, and Plumbing													
Overhead Mechanical, Electrical, and Plumbing													
Drywall Hanging													
Taping and Sanding													
Wall Insulation													
Primer and Painting													
Basement Substation													
Air Handling Unit Installation													
Electrical Substation/Switch Gear													
New M&O Building													
Exterior, Building Enclosure & Site Improvements													
Glass-Fiber Reinforced Concrete (GFRC)													
Top Cast Installation													
Landscaping													
Roof Activities													
Sloped Roof													
Interior													
Drywall Installation													
Painting													
Elevator Activities													
Commissioning													
Exterior													
Student Support Center													
Exterior, Building Enclosure & Site Improvements													
Top Cast Installation													
Glass-Fiber Reinforced Concrete (GFRC)													
SCE Transformer													
Landscaping													
Offsite Improvements													
Paving Activities													
Gas Line Installation													
N. Newell Place Improvements													
Roof Activities													
Sloped Roof													
Metal Dome													
Interior Improvements													
Carpet & Resilient Tile (Both Levels)													
Elevator Activities													
Painting													
Drywall Installation & Taping													
Finishes													
Commissioning													



ACTIVE PROJECTS

90 - DAY LOOK AHEAD



NORTH ORANGE COUNTY COMMUNITY COLLEGE DISTRICT
CYPRESS - FULLERTON - ANAHEIM (NOCE)
90-DAY LOOK AHEAD SCHEDULE
 (05-01-25 TO 07-31-25)



	May				June				July				Comments	
	6	13	20	27	3	10	17	24	1	8	15	22		29
CONSTRUCTION PHASE														
FULLERTON														
Wilshire Chiller Plant Relocation														
Building Foundation Work														
Cast-In-Drill-Hole Piles and Foundation Activities														
Cooling Tower Structure														
Rebar for Pedestal Column														
Form Columns, Concrete Pour, and Curing														
Steel Frame														
Underground Mechanical, Electrical, and Plumbing														
Excavation														
Rough-in														
Backfilling														
CMU Walls Building Envelope														
Scaffolding and Wall Building (Lifts 1-3)														
Wall Grouting														
Slab on Grade Concrete Pour														
Mechanical Electrical Pads														
Form Rebar of Pads														
Pour Concrete and Cure														
Steel/Slab on Deck														
Southern California Edison Design (Power for Chiller Plant)														
Metal Stud Framing														
CLOSE-OUT PHASE														
ANAHEIM														
Anaheim Tower First Floor Life/Safety Renovation														
Financial Close-Out														
California Community Colleges Chancellor's Office														
Develop Interior and Exterior Signage														
Substantial Completion														
Financial Close-Out														
Outdoor Patio Remodel														
Substantial Completion														
Punch-List / Final Completion														
FULLERTON														
New M&O Building														
Substantial Completion														
Punch-List / Final Completion														
Financial Close-Out														
Student Support Center														
Substantial Completion														
Punch-List / Final Completion														
Financial Close-Out														
CYPRESS														
Electrical Vehicles (EV) SCE Charging Stations-Lot 4														
Financial Close-Out														
Close-Out Documents														



June 2025

Citizens' Oversight Committee

cocc

Measure J Bond Program



1830 W. Romneya Dr., Building B., Anaheim, CA 92801