



September 2025

CAPITAL PROJECTS REPORT to the

Citizens' Oversight Committee

MAAS

Intentionally Left Blank

TABLE OF CONTENTS

Active Project Status Report

Cypress Campus

Campus Aerial View	2
Fine Arts Building Renovation.....	3
Softball Field Renovations	4
LLRC Exterior Patio.....	5
Central Plant Upgrade	6
Updates on Campus Projects - Cypress College	7-9

Fullerton Campus

Campus Aerial View	10
Renovate Buildings 300	11
Update/Improve (SS — New M&O).....	12
New Maintenance & Operation Building	13
Student Support Center	14
New Performing Arts Complex - Demolish Buildings 1100 and 1300.....	15
Wilshire Chiller Plant Relocation	16
New Horticulture/Lab School/STEM Lab	17
Softball Field Improvements.....	18
Update / Improve Infrastructure	19
Updates on Campus Projects - Fullerton College	20-27

NOCE - Anaheim Campus

Campus Aerial View	28
Swing Space—Interim Housing.....	29
Swing Space—Hotel, Restaurant, and Culinary Arts.....	30
Develop Interior And Exterior Signage	31
Outdoor Patio Remodel	32
Exterior Green Community Space Enhancement	33
Restore East Parking Lot	34
Update / Improve Infrastructure	35
Updates on Campus Projects - Anaheim Campus	36-38

Completed Projects

Cypress Campus	40-42
Fullerton Campus	43
NOCE - Anaheim Campus & District Offices	44

Financial Review

<i>Capital Project Updates - Measure J</i>	46
Estimated Project Budgets & Purchase Orders Over \$10,000	47-55
Cypress Campus.....	47-48
Fullerton Campus.....	49-51
NOCE - Anaheim Campus	52-53
District	54-55
90-Day Look Ahead Schedule	56-59

Active Project Status Report

Campus Projects

- Cypress
- Fullerton
- Anaheim and District Offices



AERIAL VIEW — CYPRESS CAMPUS PROJECTS

9200 Valley View St., Cypress, CA 90630



Fine Arts Building Renovation
[Construction]



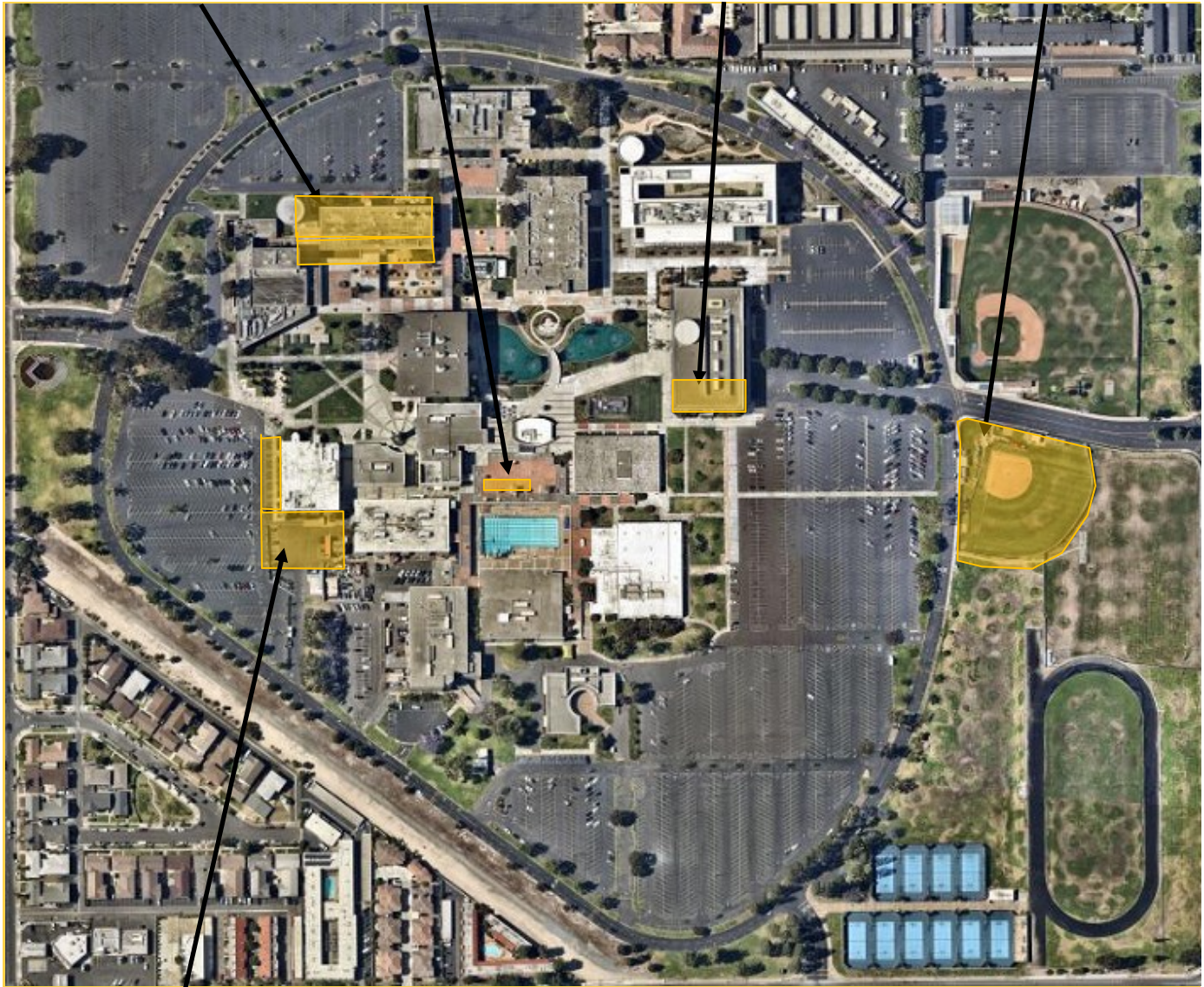
Central Plant Upgrade
[Design — Programming Validation]



LLRC Exterior Patio
[Design — Schematic Design]



Softball Field Renovations
[Design — Construction Documents]



Swing Space Project—Hotel, Restaurant, and
Culinary Arts
[Preparation for Dismantling]

*Refer to pages 29 and 35 for more details



PROJECT STATUS REPORT — CYPRESS CAMPUS

FINE ARTS BUILDING RENOVATION CONSTRUCTION

Project Manager	Allison Coburn Project Manager Campus Capital Projects
Construction Manager	Sundt Construction, Inc.
Architect of Record	DLR Group
Project Delivery Method	Construction Manager Multi-Prime
Project Square Footage	66,765 GSF
DSA Application A#	04-120539



Project Overview

The Fine Arts Building will undergo a structural and interior renovation to enhance students' academic experience. Improvements will be made to the recording arts, rehearsal and performance spaces for music instruction, along with spaces for one-on-one sessions. Existing vacant spaces not currently configured for instruction will be utilized. Noise intrusion mitigation work will ensue to minimize disruptions to instruction and music practice. New technology will be installed to support current instructional methodologies and pedagogies. The existing mechanical, electrical, and plumbing systems will be replaced. Restrooms will be updated for code-compliance. DSA-designated seismic upgrades are also planned.

Budget & Construction Costs

- Total Project Budget.....\$77,289,871
- Funding Source.....Measure J, State
Capital Outlay
- Measure J.....\$56,400,871
- State Capital Outlay\$20,889,000

Schedule

- Construction Start.....April 2024
- Targeted Construction Completion.....June 2026
- Targeted OccupancyFall 2026



PROJECT STATUS REPORT — CYPRESS CAMPUS

SOFTBALL FIELD RENOVATIONS DESIGN — CONSTRUCTION DOCUMENTS

Project Manager	Anne Acurso Project Manager Campus Capital Projects
Architect of Record	SGH Architects
General Contractor	TBD
Project Delivery Method	Design-Bid-Build
Project Square Footage	53,598 SF
DSA Application #	TBD



Project Overview

This project will feature new field amenities, including bleachers with an elevated press box, new backstop fencing and netting, new dugouts, storage facilities, enhanced landscaping and hardscaping around the fields, and improvements to comply with the Americans with Disabilities Act (ADA).

- Project Budget..... \$4,170,229
- Funding Source Measure J & Local
 - Measure J \$4,000,000
 - Local \$170,229
- Estimated Construction Start..... Fall 2026
- Targeted Construction Completion Fall 2027



PROJECT STATUS REPORT — CYPRESS CAMPUS

LIBRARY & LEARNING RESOURCE CENTER (LLRC) EXTERIOR PATIO DESIGN — SCHEMATIC DESIGN

Project Manager	Anne Acurso Project Manager Campus Capital Projects
Architect of Record	SGH Architects
General Contractor	TBD
Project Delivery Method	Design-Bid-Build
Project Square Footage	Approximately 7,500 GSF
DSA Application #	TBD



Project Overview

This project will create areas for student use and campus events including new hardscape, landscape, lighting, and furniture.

- Project Budget..... \$1,287,000
- Funding Source..... Measure J
- Estimated Construction Start Fall 2026
- Targeted Construction Final Completion May 2027



PROJECT STATUS REPORT — CYPRESS CAMPUS

CENTRAL PLANT UPGRADE DESIGN — PROGRAMMING VALIDATION

Project Manager	Allison Coburn Project Manager Campus Capital Projects
Architect of Record	N/A
General Contractor	Trane US, Inc.
Project Delivery Method	Design-Bid-Build
Project Square Footage	Approximately 5,645 GSF
DSA Application #	TBD



Project Overview

The project will involve expanding the capacity of the existing south central plant by installing new chillers, reconfiguring piping to support the entire campus loop, and refurbishing the cooling towers in both the north and south central plants. Phase 1 will focus on conducting field investigations to assess existing conditions, creating Schematic Design Documents, and finalizing the Guaranteed Maximum Price (“GMP”) for turnkey services. This will set the stage for Phase 2, which will include completing the Design Documents, securing DSA approval, and carrying out the necessary construction work.

- Project Budget..... \$4,000,000
- Funding Source..... Measure J
- Estimated Construction Start January 2027
- Targeted Construction Final Completion August 2027



PROJECT STATUS REPORT — CYPRESS CAMPUS



Fine Arts Building Renovation — Kiln Yard Activities

Fine Arts Building Renovation

June

- By June, window installation reached the 50 percent mark, with the remainder expected to be completed in the coming months. Mechanical, electrical, and plumbing (MEP) installation progressed on the roof condensers.
 - Drywall activities advanced on the interior of the building as crews continued taping on the second and third floors. Work in both areas was anticipated to be completed within the month. Crews also began framing the drywall ceilings on the second floor. Simultaneously, door framing progressed on all floors with third floor activities nearing conclusion.
 - Interior finishes commenced on the third floor with the start of ceiling tile grid installation for upcoming acoustical panel placement. A coat of primer paint was applied in June. On the first floor, drywall and insulation activities were underway in the classrooms, labs, offices, and restrooms.
 - Electrical equipment was installed on-site to set the main switchgear in place to establish permanent power for the building.
- As the project reached the 50 percent mark towards completion, the California Community Colleges Chancellor's Office (CCCCO) gave its greenlight to proceed with furniture, fixtures, and equipment (FF&E) procurement over the summer. FF&E items are anticipated to be delivered in fall 2025.
 - At the second Board of Trustees' meeting in June, the Campus Project Team presented multiple change orders with various trades contractors for the Board's consideration. Additionally, Change Orders No. 6 and 7 with trade contractors Bayview and Inland Building, respectively, were presented to the Board for a resolution exceeding 10 percent of the contract amount for its consideration at the same meeting.
 - The schedule was updated to allow for commissioning activities to take place ahead of substantial completion. To achieve this, activities were re-sequenced to ensure



Fine Arts Building Renovation — Window Installation Activities

PROJECT STATUS REPORT — CYPRESS CAMPUS



**Fine Arts Building Renovation —
Recital Hall Stage and Theater Seating Construction**

the final placement and functionality of all MEPs prior to the start of commissioning. This step will make efficient use of the time allocated for the project.

July—August

- Mechanical, electrical, and plumbing (MEP) installation progressed on the condensers at the roof. Crews continued window activities on all floors. In July, framing reached the 80 percent mark, while installation achieved 75 percent completion. Simultaneously, testing took place for water tightness. Completion is anticipated in the coming months.

- On the interior of the building, framing for the seating and stage area of the recital hall is underway on the third floor. Coats of paint were applied to the walls and exposed MEP to avoid distractions from the recital hall stage. The same work was performed on the second floor. Crews are in the process of tiling the floors. Additionally, installation of the wheelchair lift progressed to ensure access to the mezzanine and third

floor. The elevator contractor began mobilizing in August prior to starting activities on the third floor.

- Finishes continued on the second and third floors with acoustic ceiling and ceiling tile grid installation. First floor framing remained underway. Crews also continued drywall activities with drywall taping and seam closures to secure the drywall prior to painting on the second and first floors. MEPs were set in place on the top floor of the building, while guardrails were set in place on the second floor lobby area.
- Electrical equipment is being set in place including medium voltage panels and the installation of all single line circuitry required to run mechanical equipment between July and August. Permanent power has been established for the building. Plumbing equipment for the heater and booster pump was completed. Building climatizing is progressing throughout the building; crews flushed the chilled water lines ahead of starting activities on the third floor.
- Site utilities work progressed with the final connection for the storm drain at the north and south elevations expected to be made after the completion of coordination and design adjustments to avoid the existing infrastructure in the immediate area. Concrete columns were poured to reinforce the piazza bridge that serves as a second floor entryway to the campus; the columns underwent curing for 21 days. Following its completion, crews removed shoring and formwork. The existing guardrails also were repaired at the South Piazza Bridge.
- Sitework continues at the kiln yard as steel structures are being set in place. The Design Team is in the process of finalizing their layout prior to the structures' final placement. Crews are now preparing to pour slab-on-grade to form the foundation and flooring in the area. This includes ground leveling, known as site grading and the installation of reinforcement bar formwork. The slab on grade is expected to be poured in the coming weeks upon the conclusion of the previous activities.



PROJECT STATUS REPORT — CYPRESS CAMPUS

- Demolition and Americans with Disabilities Act (ADA) Improvements at Parking Lot 9 reached the 50 percent mark in June and were completed in July. Asphalt paving and signage installation also were finalized.

Softball Field Renovations

June—August

- The Design Team completed the 60 percent Construction Documents (CDs). The Campus Project Team reviewed the CDs and drafted comments for the Design Team’s consideration and inclusion in the final submittal. A submittal to DSA is anticipated to be made in the next three months. The project is on budget based on the most recent cost estimate.



Library & Learning Resource Center (LLRC) Exterior Patio —
Project Site

Library & Learning Resource Center (LLRC) Exterior Patio

June—August

- The Campus Project Team received the Schematic Design package and provided comments to the Design Team for inclusion into the final drawings.
- The Design Team anticipates completing the Construction Documents at the end of September for their potential submittal to the Division of State Architect in October.

Central Plant Upgrade

June—August

- The Campus Project Team and Trane U.S. Inc, kicked-off Phase One activities in mid-July starting with the design process. Upon the conclusion of this activity, the Campus Project Team and contractor will assess cost through a guaranteed maximum price process. Once all involved parties come to an agreement, the project will transition to Phase Two of the contract, for design implementation and the execution of the anticipated upgrades.



AERIAL VIEW — FULLERTON CAMPUS PROJECTS

321 E. CHAPMAN AVE., FULLERTON, CA 92832



New Maintenance & Operations
Building
[Close-Out]



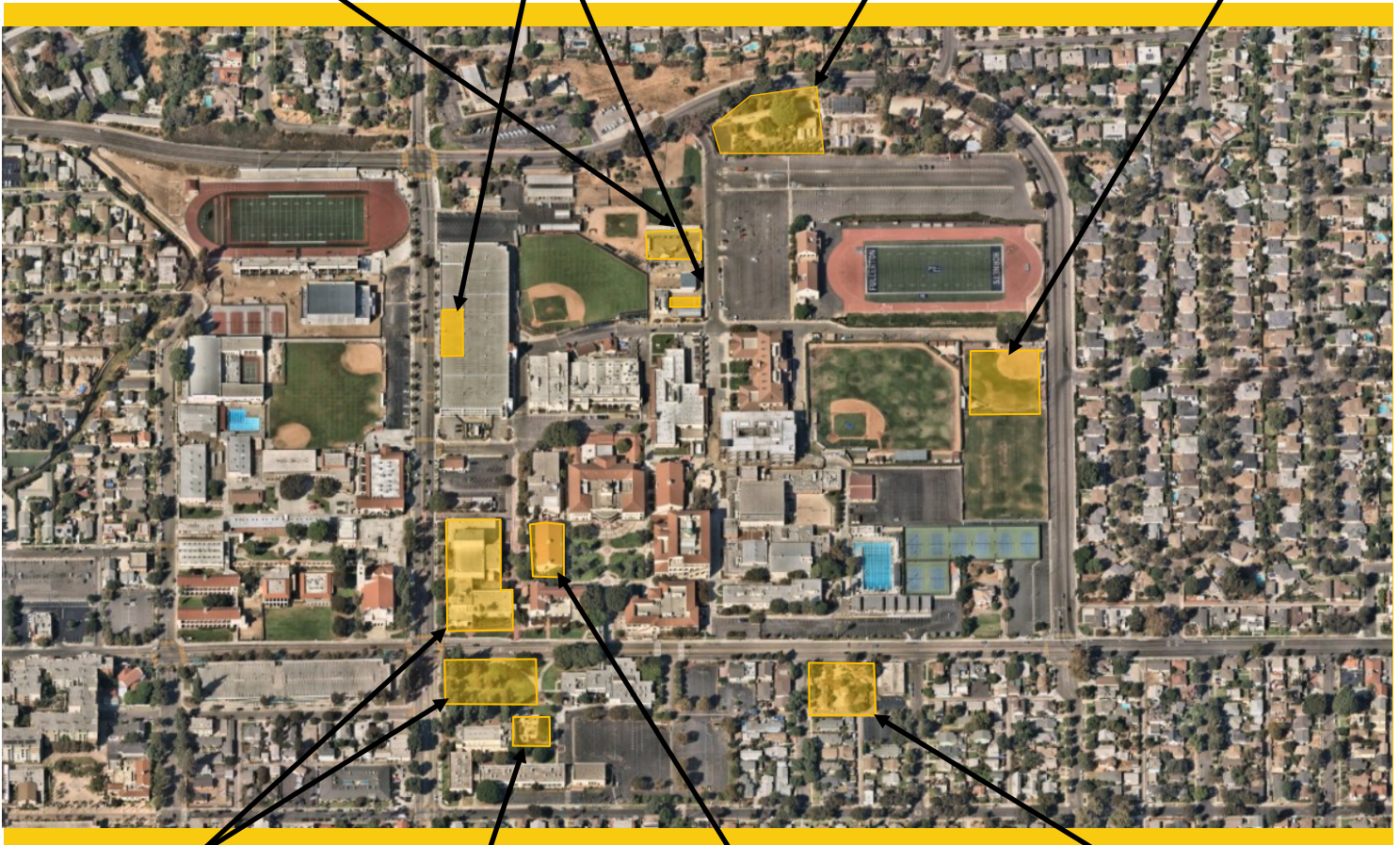
Swing Space — New M&O
[Potential Dismantling]



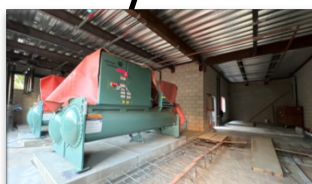
New Horticulture/Lab School/
STEM Lab
[Planning]



Softball Field Improvements
[Design— Design Development]



New Performing Arts Complex -
Demolish Buildings
1100 and 1300
[Construction]



Wilshire Chiller Plant
Relocation
[Construction]



Renovate Building 300
[Construction]



Student Support Center
[Close-Out]



PROJECT STATUS REPORT — FULLERTON CAMPUS

RENOVATE BUILDING 300 CONSTRUCTION

Project Manager	Joel Gonzalez Project Manager Campus Capital Projects
Construction Manager	Simpson & Simpson
Architect of Record	Westberg + White
General Contractor	Icon West
Project Delivery Method	Design-Bid-Build
Project Square Footage	22,705 GSF
DSA Application A#	04-118314, 04-121906



Project Overview

A total renovation of Building 300, including seismic enhancements and historic consideration, are planned under the project's scope of work. Upon completion, the building will contain general classrooms, dean and faculty offices, shared laboratories, and improved foundations for a safer built environment.

Budget & Construction Costs

- Total Project Budget.....\$34,263,861
- Funding Source.....Measure J, State Capital Outlay, & Local
- Measure J.....\$22,982,000
- State Capital Outlay\$11,272,621
- Local Funds.....\$9,240

Schedule

- Construction Start.....May 2024
- Targeted Construction Completion.....January 2026

Allowances Status					
	In Contract	Approved		Balance	
Allowances	\$2,879,550	\$1,651,680	57%	\$1,227,870	43%



PROJECT STATUS REPORT — FULLERTON CAMPUS

UPDATE/IMPROVE (SWING SPACE — New M&O)

POTENTIAL DISMANTLING

Project Manager Jorge Arredondo
Assistant Project Manager
Campus Capital Projects

General Contractor TBD

Project Delivery Method CUPCAA

Project Square Footage N/A

DSA Application A# N/A



Project Overview

The Swing Space—M&O served as a temporary parking lot for Maintenance and Operations carts for the duration of construction. Approximately 12 temporary parking spots were made available for department vehicles for the duration of the construction of the New M&O Building. The project has been reactivated to address the relocation of storage containers and return of maintenance and operations carts to the newly completed parking lot at the New M&O Building project site. Site dismantling at the swing space locations are also planned.

Budget & Construction Costs

- Total Project Budget.....\$150,000
- Funding Source.....Measure J

Schedule

- Construction Start.....August 2023
- Targeted Construction Completion.....November 2023
- Anticipated Dismantlement.....September 2025



PROJECT STATUS REPORT — FULLERTON CAMPUS

NEW MAINTENANCE & OPERATION BUILDING

CLOSE-OUT

Project Manager	John Erickson Project Manager Campus Capital Projects
Architect of Record	BN Builders, Inc. & Roesling Nakamura Terada
General Contractor	BN Builders, Inc.
Project Delivery Method	Progressive Design-Build
Project Square Footage	14,723 GSF
DSA Application A#	04-121528



Project Overview

The New Maintenance and Operations (M&O) Building will centralize all services into a single building located on the Main Campus. The building will include trade-specific workshops for maintenance, grounds, facilities, and custodial personnel while improving response time and efficiencies by locating the building on the Main Campus adjacent to the central plant.

Budget & Construction Costs

- Total Project Budget.....\$20,116,654
- Funding Source.....Measure J & Local
- Measure J.....\$6,399,604
- Local Funds.....\$13,717,050

Schedule

- Construction Start.....October 2023
- Construction Completion.....July 2025

Allowances and Contingency Status					
	In Contract	Approved		Balance	
Allowances	\$501,866	\$494,776	99%	\$7,090	1%
Contingency	\$318,703	\$318,882	100%	\$0	0%



PROJECT STATUS REPORT — FULLERTON CAMPUS

STUDENT SUPPORT CENTER CLOSE-OUT

Project Manager	John Erickson Project Manager Campus Capital Projects
Architect of Record	BN Builders, Inc. & Roesling Nakamura Terada Architects, Inc.
General Contractor	BN Builders, Inc.
Project Delivery Method	Progressive Design-Build
Project Square Footage	23,192 GSF
DSA Application A#	04-121527



Project Overview

Located at the intersections of Chapman Avenue and Newell Street, the project formerly known as the Chapman/Newell Instructional Building, will be home to an array of student services vital to their success, including the Campus Veterans' Resource Center, Student Wellness Center (both medical and behavioral health), the Campus Food Bank, Extended Opportunity Programs and Services (EOPS), CalWORKS, Cooperative Agencies Resources for Education (CARE)/Foster Youth Success Initiative (FYSI), a Multi-Cultural Center, and 2 instructional classrooms. Support functions will be available with community storage, a department-wide copy and breakroom, and a lactation room.

Budget & Construction Costs

- Total Project Budget.....\$29,982,754
- Funding Source.....Measure J & Local
- Measure J.....\$28,302,917
- Local Funds.....\$1,679,837

Schedule

- Construction Start.....October 2023
- Construction Completion.....June 2025

Allowances and Contingency Status					
	In Contract	Approved		Balance	
Allowances	\$679,500	\$553,423	81%	\$126,077	19%
Contingency	\$559,496	\$521,635	93%	\$37,861	7%



PROJECT STATUS REPORT — FULLERTON CAMPUS

NEW PERFORMING ARTS COMPLEX - DEMOLISH BUILDINGS 1100 AND 1300 CONSTRUCTION

Project Manager	John Erickson Project Manager Campus Capital Projects
Construction Manager	Kitchell/CEM Inc
Architect of Record	Perkins Eastman Architects
General Contractor	SJ Amoroso Co., LLC
Project Delivery Method	Design-Bid-Build
Project Square	77,560 GSF
DSA Application A#	04-121681



Project Overview

This project addresses the demand for enrollment in the Performing Arts programs by constructing a new complex that will combine music, drama, theater arts, and communication programs into a single facility. The new building will replace outdated facilities with electrical deficiencies and outmoded configurations. The new structure will take advantage of the potential use of commonly required spaces to improve overall utilization and flexible spaces that help programs in meeting higher demands anticipated in the near future.

Budget & Construction Costs

- Total Project Budget.....\$135,956,025
- Funding Source.....Measure J & Local
- Measure J.....\$92,005,166
- State Capital Outlay.....\$43,787,000
- Local Funds.....\$163,859

Schedule

- Construction Start.....May 2025
- Targeted Construction Completion.....Summer 2027

Allowances Status					
	In Contract	Approved		Balance	
Allowances	\$7,700,000	\$0	0%	\$7,700,000	100%



PROJECT STATUS REPORT — FULLERTON CAMPUS

WILSHIRE CHILLER PLANT RELOCATION

CONSTRUCTION

Project Manager	Aaron Choi Project Manager
Architect of Record	Perkins Eastman Architects
General Contractor	Plumbing, Piping & Construction, Inc.
Project Delivery Method	Design-Bid-Build
Project Square Footage	2,175 GSF
DSA Application A#	04-121682



Project Overview

Considered the first phase of the New Performing Arts Complex project, the Wilshire Chiller Plant will be relocated adjacent to its original location to accommodate the future construction of the New Performing Arts Complex in its original building footprint. The facilities deliver temperature control to the buildings in its vicinity, including the Wilshire Center. The new facility will provide the same service to the current buildings in addition to the new Performing Arts Complex. The relocation of the infrastructure will be carried in coordination with the local utility, Southern California Edison (SCE). Following DSA approval of Increment 1, a revised estimate of probable cost of construction now accounts for current market conditions and material prices.

Budget & Construction Costs

- Total Project Budget.....\$15,726,321
- Funding Source.....Measure J

Schedule

- Construction Start.....May 2024
- Targeted Construction Completion.....December 2025

Allowances Status					
	In Contract	Approved		Balance	
Allowances	\$679,323	\$588,337	87%	\$90,986	13%



PROJECT STATUS REPORT — FULLERTON CAMPUS

NEW HORTICULTURE/LAB SCHOOL/STEM LAB PLANNING

Project Manager Joel Gonzalez
Project Manager
Campus Capital Projects

Architect of Record TBD

General Contractor TBD

Project Delivery Method Design-Build

Project Square Footage Approximately 40,000
GSF

DSA Application A# TBD



Project Overview

Consolidate all STEM programs into a two-floor building with updated laboratories and associated infrastructure, greenhouse spaces, tailored classrooms, tutoring spaces, and Americans with Disabilities Act (ADA) improvements.

- Total Project Budget (Est.)\$52,181,636
- Funding SourceMeasure J & State Capital Outlay
 - Measure J\$25,167,636
 - State Capital Outlay Funds\$27,014,000
- Estimated Construction Start.....Summer 2027
- Targeted Construction CompletionFall 2028



PROJECT STATUS REPORT — FULLERTON CAMPUS

SOFTBALL FIELD IMPROVEMENTS

DESIGN– DESIGN DEVELOPMENT

Project Manager	Joel Gonzalez Project Manager Campus Capital Projects
Architect of Record	Westberg + White
General Contractor	TBD
Project Delivery Method	Design-Bid-Build
Project Square Footage	Approximately 16,863 SF
DSA Application A#	TBD



Project Overview

This project intends to address deficiencies to the existing facilities and associated infrastructure for the campus athletics department.

- Total Project Budget (Est.)\$7,000,000
- Funding SourceMeasure J
- Estimated Construction Start.....Summer 2026
- Targeted Construction CompletionJanuary 2027



PROJECT STATUS REPORT — FULLERTON CAMPUS

UPDATE/IMPROVE INFRASTRUCTURE

VARIOUS STAGES

Address	321 E. Chapman Ave.	Total Project Budget	\$19,075,188 (Measure J)
	Fullerton, CA 92832	Total Budget Allocated	\$8,294,702 (Measure J)
Number of Projects	5	Funding Source	Measure J & Capital Outlay

General Overview

The projects will address infrastructure improvements or upgrades throughout the Campus. Funds are allocated to projects as needs are identified.

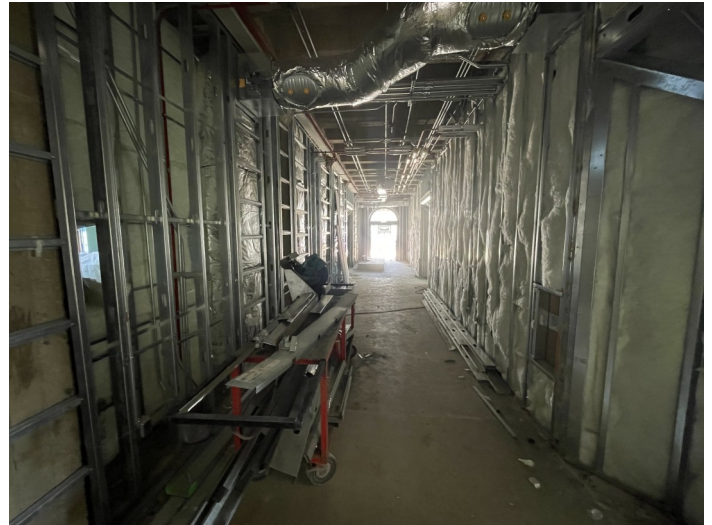


PROJECT STATUS REPORT — FULLERTON CAMPUS

Renovate Building 300

June

- On the second floor, hallway ceiling wall framing made progress, while crews also continued hanging drywall in areas where framing had been completed. Taping and sanding followed its completion. Fire caulking and sealant application commenced on the second level. Equipment to secure cabling to the ceiling was planned for installation at the end of June, ahead of laying ceiling grid in mid-July.
- On the first floor, concrete pours to secure reinforcement bars continued ahead of delivery of long lead items in mid-June. The final pour took place at the end of the month. Wall framing, backing, and door frame inspections took place in early June, followed by drywall hanging. Pressure testing of domestic lines, heating, ventilation, and air conditioning (HVAC) controls, and hydronic lines throughout the building were completed.



Renovate Building 300 — Walls Framed and Insulated



Renovate Building 300 — Drywall and Mechanical, Electrical, and Plumbing Installed

- The northeast stairs were built in June and the railing was installed.
- The walkways on the east side of the project were leveled, compacted, and the slopes were verified. Formwork to delineate the walking surfaces were set in place. Sidewalk concrete pouring and irrigation began in the second week of July.
- Fencing will be taken in closer to the building prior to the start of the semester. Fencing was set in place for areas impacted by chilled-water piping utility connections. The initial inspection passed, pending additional review of the points of connection. The trenches were covered on the conclusion of this review.

PROJECT STATUS REPORT — FULLERTON CAMPUS

- Hazardous materials abatement neared completion in the first week of June, with testing for clearance completed in the following week.

July

- Window glass pane replacement and frame painting progressed around the building, with tasks expected to be completed by the fourth week of July.
- On the second floor, drywall taping and sanding neared completion and was finished by the end of the month. This was followed by painting and priming. A paint mock-up was installed in the third week of July for the architect's approval. Window head and sill repairs were underway. In the restrooms, the installation of the hard lid ceiling began, and the backer board was set in place.



Renovate Building 300 — South Stairs Reconstruction

- Telecommunications cabling installation is ongoing on the secondary telecommunications hub known as the intermediate distribution frame (IDF) room, while electrical rough-in and panel placement have commenced. The fire-rated plywood has been set in place, followed by the application of floor sealer and data racks/ladders were fitted in place. Network switches were installed in early August. Placement of all overhead equipment is being set in place.
- On the first floor, drywall has been hung on one side; wall insulation and door frames are in place. Crews are the electrical rough in and subsequent device placement. Switch gear and transformer installation progressed. Hazardous materials paint abatement for the window assembly was completed. Trenching for underground plumbing was underway. Door frames are installed, and coordination continued for infrastructure access control to the building.
- At the basement level, reinforcement bar placement and concrete pours were completed, along with the remaining fiber reinforced polymer (FRP) placement.

August

- At the exterior, painting will be completed between mid-September and late October, following the completion of current repairs to concrete and spalling plaster around the building. Fire lane rough grading has started with the concrete pour expected in September. Reconstruction of the south and north exterior staircases is in progress, with the south staircase receiving wall caps and the north staircase receiving railings.



PROJECT STATUS REPORT — FULLERTON CAMPUS

- On the second floor, ceiling grid installation in the classrooms and hallways have been completed; this activity was followed by inspections. Electrical rough-in at the ceilings and device installation are finished. This was followed by the start of ceiling tile placement. Fire alarm cabling and finishes for heating, ventilation, and cooling (HVAC) were achieved. HVAC thermostat and controls followed, with completion expected by early September. Self-leveling concrete application is planned to start in early September, followed by the installation of flooring carpets, tiles, and base in late September. Accessories, technology mounts, and finishes activities are anticipated to begin in early October.
- On the first floor, taping and sanding concluded in early August, followed by primer and the application of the first coat of paint. Ceiling grid installation is expected to start in the third week of August. Flooring is anticipated to be completed by mid-October, with the placement of self-leveling concrete and the installation of resilient tile flooring and carpeting. Commissioning is expected to start in late November.
- In the restroom, waterproofing installation and tiling began in the first half of August. Waterproofing flood tests began in late August, followed by tiling in these areas.
- The fire-rated network distribution system known as the building distribution frame (BDF) room, has been built, along with the installation of data racks and j hooks. The placement of fiber cables to connect the building to the campus network began in August.
- On both floors, the installation of the intermediate distribution frame data racks and ladders continued, followed by the placement of the structured cabling and network switches.
- In the basement, the establishment of permanent power to the building is anticipated for early September. Mechanical equipment will be powered up to prepare for start-up testing.
- The installation of shut-off valves is ongoing, pending responses to requests for information (RFIs). Additionally, work on the south and west sidewalks commenced by the end of July and finished in early August, followed by the installation of the fire lane.
- At the south staircase, exterior wall cap placement and stair lighting were finished by the end of July. Tiling is scheduled to finish by the end of August. At the north staircase, framing for the lower section and plaster installation commenced by the end of July, with wall cap placement and tiling were expected to be done by mid-September.

Update/Improve (Swing Space—New M&O)

June — August

- The project has resumed with the objective of relocating the storage bins that were temporarily placed near Sherbeck Field during construction of the New M&O Building from the north end of campus. Additionally, the relocation of maintenance and operations carts is anticipated to take place in the coming months.



PROJECT STATUS REPORT — FULLERTON CAMPUS

New Maintenance & Operations Building

June

- The majority of the scope of work for the project has been completed. The remaining punch-list items were addressed by the end of the month.
- The state inspection for the elevator was successfully completed. Crews installed permanent fencing between the New M&O building and the baseball field in the first week of June, and the temporary fencing was later removed.
- Door hardware and final core installation began. The placement of low voltage electrical items made progress. The Campus Project Team coordinated move-in activities with the building user group ahead of activities in mid-July.
- Close-out activities were underway starting with the collection of as-built drawings, submittals, warranties and manuals. Trainings took place with Campus Facilities and staff prior to the issuance of the Notice



New M&O Building — Completed Project

of Completion in the coming months.

July — August

- The vehicular gate was installed in the third week of July. The project then achieved substantial completion in mid-July. To commemorate this momentous occasion, Campus Leadership is anticipated to hold an opening ceremony in mid-September with members of the Citizens' Oversight Committee in attendance.

Student Support Center

June

- On the second floor, installation of the interior lobby drop ceiling tiles began in the second week of



Student Support Center — Completed Project



PROJECT STATUS REPORT — FULLERTON CAMPUS

June, pending the approval of a construction change directive (CCD) from DSA. Door hardware and final core installation were scheduled for the end of the month.

- Air and water flow were measured, adjusted, and documented to ensure optimal performance of the building's heating, ventilation, and air conditioning (HVAC) system.
- VectorUSA completed its portion of the scope of work for the placement of data and telecommunications cabling throughout the building and establishing a connection to the campus network.
- The initial elevator inspection was completed; the inspectors' comments were reviewed and addressed by the end of the month. A follow-up inspection took place in July. The project later passed fire alarm testing.
- The commissioning process concluded, and the remaining fixtures were installed by the end of the month. Tree grates were fabricated and secured in place. Fencing for the trash enclosure and courtyard was installed, and landscaping was completed.
- Close-out activities began starting with the collection of as-built drawings, submittals, warranties and manuals. Trainings took place with Campus Facilities and staff prior to the issuance of the Notice of Completion in the coming months.

July — August

- The building underwent final testing for the fire alarm and it was approved on July 14. The final items required by the DSA Field Engineer were then addressed involving the ceilings in the lobbies. The final components for the Building Access Control were addressed. Project sign-off took place on July 18, followed by furniture and staff moving activities. The building officially opened its doors on July 21. To commemorate this momentous occasion, Campus Leadership is anticipated to hold an opening ceremony in mid-September with members of the Citizens' Oversight Committee in attendance.

New Performing Arts Complex

June

- Crews began relocating telecommunications and electrical lines in the first week of June. The work concluded in the second week of the month.
- The art sculptures originally located on the project site were carefully crated and relocated for the duration of construction activities in early



New Performing Arts Complex — Site Grading Activities

PROJECT STATUS REPORT — FULLERTON CAMPUS

June.

- Hardscape and site demolition began in the second week of the month. Grading activities started by the end of June.
- Pre-construction meetings took place with multiple subcontractors for electrical, plumbing, demolition, and grading ahead of the start of the aforementioned activities.

July — August

- The City of Fullerton has granted an encroachment permit entrance to allow for the entrance and exit of equipment using the two established gates between the New Performing Arts Complex and Wilshire Chiller Plant Relocation. This permit will also support traffic control during the delivery of oversized equipment. Demolition tasks were completed by the third week of July. Potholing was underway to locate any existing underground items that may need to be removed before excavation activities commence in mid-August.
- Grading and over-excavation for the building layout commenced on the west side along Lemon Street. The certification for the building pad for the West Building was completed by late August. Testing for contaminated soils will also conclude by the end of the month.
- The caisson drilling for the west classroom is scheduled to be completed by the end of August. Following the contaminated soils investigation, the excavation of the Orchestra pit and certified pad will commence and is anticipated to be completed by early September. Subsequently, caisson drilling and grade beam installation will begin once the pad has been certified in early September.
- Additionally, coordination was underway between the Construction Management Team and the exiting FF&E coordinator for the handover of information and documents for future FF&E coordination.
- Preparations are being made for a groundbreaking ceremony to coincide with the start of the Fall 2025 semester.

Wilshire Chiller Plant Relocation

June

- The construction of the concrete masonry unit (CMU) walls continued with the first and second lifts in the early weeks of June. Scaffolding for the second lift was installed ahead of the aforementioned activities to facilitate the placement of CMU bricks.
- Inside the building, the placement of electrical and mechanical underground conduits continued. Simultaneously, electrical and sewer lines were installed in the compressor rooms. The layout for the green screen footings was set in place ahead of the future placement of the jib crane. Concrete pours to form the building's foundation and the compressor workbench footing were carried out.
- A series of change orders was issued to address the rerouting of unforeseen conditions and subsequent time delays associated with this added scope of work. Change Order No. 1 was previously approved in fall 2024 to



PROJECT STATUS REPORT — FULLERTON CAMPUS

allow for the rerouting of the unforeseen conditions; Change Order No. 2 was presented to the Board of Trustees at the second meeting in June for compensable time delays involved in rerouting the unforeseen conditions and was approved by the Board.

July

- Concrete forms and rebar for the storage and compressor room were set in place ahead of the concrete pour that took place in the third week of July. Excavation for the jib crane and kiln area footings commenced in preparation for the placement of MEP equipment on the completed mechanical pads. Following equipment placement, the steel deck roof structure installation began.
- The Southern California (SCE) scope of work started with asphalt cutting and trenching in late July. This coincided with the start of mechanical water trenching and the installation of piping in the final days of the month.
- The lightweight concrete pour for the Americans with Disabilities Act (ADA) ramp and roof took place in late July. The installation of steel for the theater storage roof began at the end of the month.



**Wilshire Chiller Plant Relocation —
Steel Roof Decking Installation; Completed CMU Walls, and
Equipment Placement on Mechanical Pad**

August

- Installation of hangers and piping has begun in the mechanical room. Mechanical water trenches are ongoing, with the building portion backfilled and work in the compressor room area continuing until the end of the month. Mechanical water piping installation is also set to be completed by the end of the month. Shoring for the electrical yard vaults has been installed, with the application of a concrete mixture slurry taking place in the second week of August.
- Work proceeded on the steel roof structure for the theater storage building. Following this, the remaining steel for the compressor room roof and canopy is expected to be completed by the end of the month. Scaffolding is set up on the exterior of the building in preparation for the stucco plaster installation, which commenced in the second week of August.
- Trenching for the SCE power reroute plan is in progress, with conduit installation occurring simultaneously. Excavation and installation of the SCE vault started in the second week of August, followed by the trenching of the vault cables.

PROJECT STATUS REPORT — FULLERTON CAMPUS

New Horticulture/Lab School/STEM Lab

June — August

- The State of California and California Community Colleges Chancellor's Office has authorized the college to initiate the Architect of Record selection. Funding from Proposition 2 has been allocated to support this process. The Campus Project Team is currently preparing the request for proposals (RFP), which will be issued in the coming months. With this authorization, the project has opted to cancel the selection of the planning architect.

Softball Field Improvements

June — August

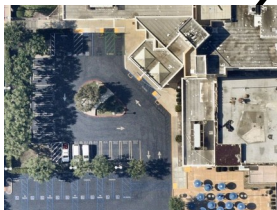
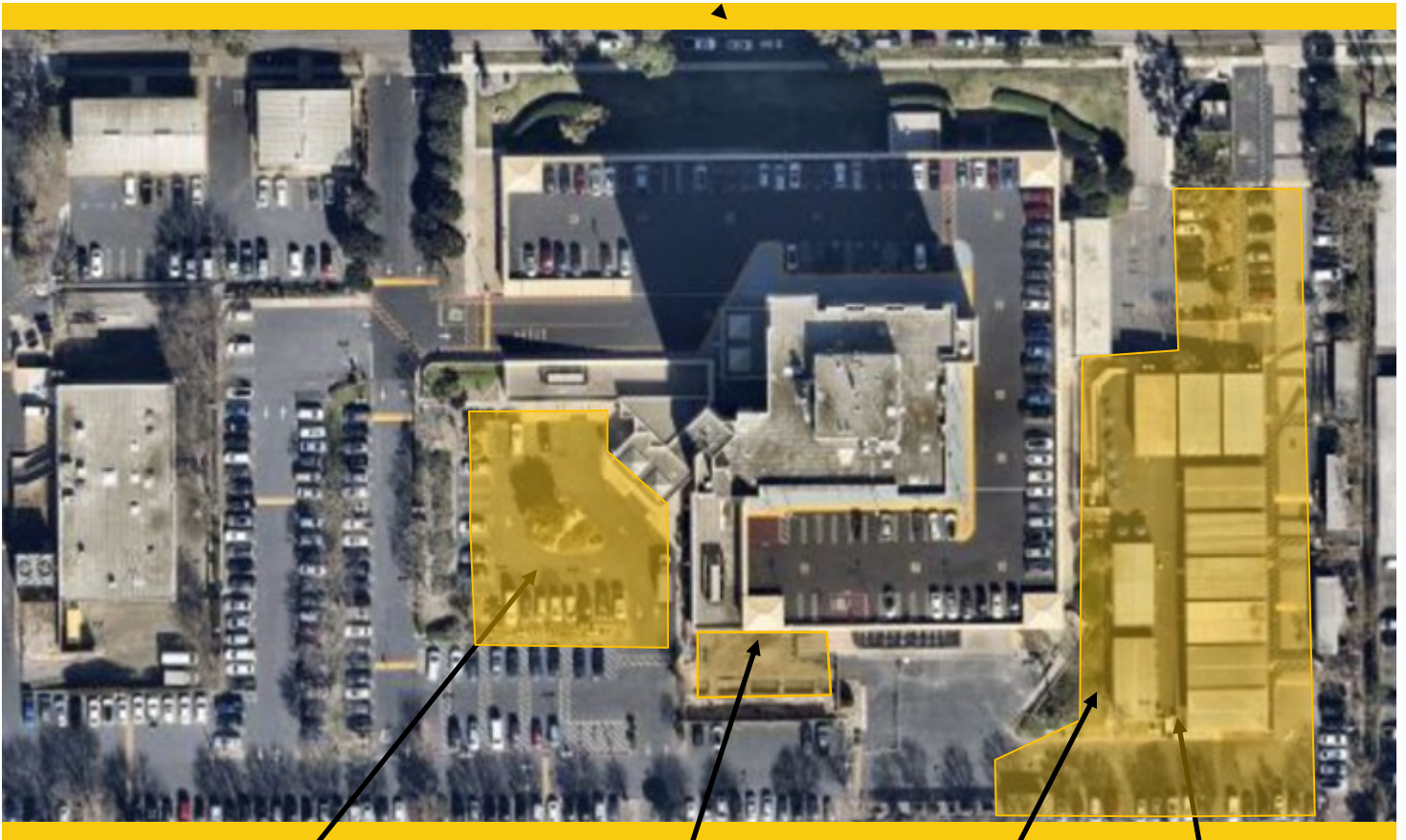
- The Geotechnical report, percolation test results, and coinciding report have been received. A hazardous materials inspection took place in late July. Shortly thereafter, the project achieved 100 percent Design Development drawings that were reviewed for comments by the Campus Project Team and incorporated into the final set. Upon its conclusion, the project entered the Construction Documents (CDs) phase with the CDs under development. A completed submittal is planned to be made to the state architect agency in the coming months for its review and approval.
- The cost estimate for the CDs phase was provided to the Campus Project Team and was reviewed by the user group; evaluations are taking place to align the scope of work with the anticipated construction cost of the project.



Softball Field Improvements — Project site

AERIAL VIEW — ANAHEIM CAMPUS PROJECTS

1830 W. ROMNEYA DR., ANAHEIM, CA 92801



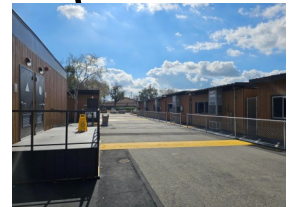
Exterior Green Community Space
Enhancement
[Design— Construction
Documents]



Outdoor Patio Remodel
[Close-Out]



Swing Space Projects / Interim
Housing
[Dismantling]



Restore East Parking Lot
[Design— Construction
Documents]



► Develop Interior and Exterior Signage
[Close-Out]



PROJECT STATUS REPORT — ANAHEIM CAMPUS

SWING SPACE PROJECTS / INTERIM HOUSING

DISMANTLING

Project Manager	Matt Pirayeh Senior Project Manager
Architect of Record	SVA Architects, Inc.
General Contractor	RT Contractor Corp
Project Delivery Method	Design-Bid-Build
Project Square Footage	9,500 SF
DSA Application A#	04-120893



Project Overview

Prior to the start of the Anaheim Tower First Floor Life/Safety Renovation project, involving repairs due to water intrusion at the upper deck parking lot, most first-floor activities were relocated to temporary classrooms and facilities located at the East Parking Lot of the Anaheim-NOCE Campus. Approximately 14 new temporary modular buildings were procured for NOCE's ongoing instruction and administrative activities. Relocation activities will ensue from the Euclid Center, Building B, and Swin Space — Interim Housing in phases between May and August 2025.

Budget & Construction Costs

- Total Project Budget.....\$3,351,335
- Funding Source.....Measure J & Local
- Measure J.....\$1,650,000
- RDA.....\$1,931,335

Schedule

- Construction Start.....April 17, 2023
- Construction Completion.....November 2023
- Anticipated Dismantlement.....Summer 2025



PROJECT STATUS REPORT — ANAHEIM CAMPUS

SWING SPACE—HOTEL, RESTAURANT, AND CULINARY ARTS

DISMANTLING

Project Manager	Anne Acurso Project Manager
Architect of Record	HPI Architecture
General Contractor	Lot 1: OrangeBlue KBD: Coelho, Inc.
Project Delivery Method	Design-Bid-Build
Project Square Footage	1,920 SF
DSA Application A#	04-121647 Kitchen 04-121568 Lot 1



Project Overview

Prior to the start of the Anaheim Tower First Floor Life/Safety Renovation project that involved water intrusion and building durability repairs, the Hotel, Restaurant, and Culinary Arts Department was temporarily relocated to NOCE - Cypress Campus to accommodate instructional activities for the duration of construction. Temporary buildings dedicated for this department were established and outfitted with equipment to support instruction. The return of faculty, personnel and instruction activities are planned to Cypress Bistro with the completion of construction for the Anaheim Tower Life/Safety Renovation project.

Budget & Construction Costs

- Total Project Budget.....\$3,800,000
- Funding Source.....Measure J & Capital Outlay
 - Measure J\$2,500,000
 - Capital Outlay.....\$1,300,000

Schedule — Parking Lot 1

- Estimated Construction Start.....May 2023
- Construction CompletionAugust 2023

Schedule— Kitchen, Bathroom and Dining Room

- Estimated Construction StartAugust 2023
- Construction CompletionJanuary 2024
- Anticipated Dismantlement Start.....May 2025
- Anticipated Dismantlement Completion.....August 2025



PROJECT STATUS REPORT — ANAHEIM CAMPUS

DEVELOP INTERIOR AND EXTERIOR SIGNAGE

CLOSE-OUT

Project Manager	Cora Baldovino Project Manager Facilities, Planning, Maintenance and Construction Contracts
Architect of Record	Westberg White
Specialty Contractor	KYA Group Inc.
Project Delivery Method	Design-Bid-Build
Project Square Footage	N/A
DSA Application A#	04-121174



Project Overview

New exterior signage will be installed to update the existing marquee signage located off Romneya Drive. NOCE signage will be added above the canopy at the Tower's main entrance points, and placed on the north facing wall. On the interior, directory and directional signage are planned to be updated next to elevators at each floor.

- Total Project Budget\$1,146,431
- Funding SourceMeasure J & Local
 - Measure J\$1,087,431
 - Local\$59,000
- Project Gross Square Footage.....N/A
- Construction Start.....August 2023
- Targeted Construction CompletionSummer 2025



PROJECT STATUS REPORT — ANAHEIM CAMPUS

OUTDOOR PATIO REMODEL CLOSE-OUT

Project Manager	Cora Baldovino Project Manager Facilities, Planning, Maintenance and Construction Contracts
Architect of Record	PBK Architects
General Contractor	All-American Building Services, Inc.
Project Delivery Method	Design-Bid-Build
Project Square Footage	2,000 SF
DSA Application A#	04-123306



Project Overview

Updates are scheduled to the existing outdoor patio on the Tower's south end where students, faculty, and staff may congregate and hold events. The project includes the demolition of the existing patio to make way for a large canopy shade structure to cover built in tables with charging ports, ceiling fans, and ventilation to provide building users with an enhanced space for learning and beyond.

Budget & Construction Costs

- Total Project Budget.....\$1,382,500
- Funding Source.....Measure J

Schedule

- Construction Start.....November 2024
- Targeted Construction Completion.....June 2025

Allowances Status					
	In Contract	Approved		Balance	
Allowances	\$100,000	\$47,095	47%	\$0	100%



PROJECT STATUS REPORT — ANAHEIM CAMPUS

EXTERIOR GREEN COMMUNITY SPACE ENHANCEMENT CONSTRUCTION DOCUMENTS

Project Manager	Cora Baldovino Project Manager Facilities, Planning, Maintenance and Construction Contracts
Architect of Record	PBK Architects
General Contractor	TBD
Project Delivery Method	Design-Bid-Build
Project Square Footage	Approximate 10,000 SF
DSA Application A#	TBD



Project Overview

This greenspace will foster social gatherings in a grand quad with amphitheater seating for special events like commencement. Americans with Disabilities Act (ADA) improvements are included in the project scope of work for accessibility of all users.

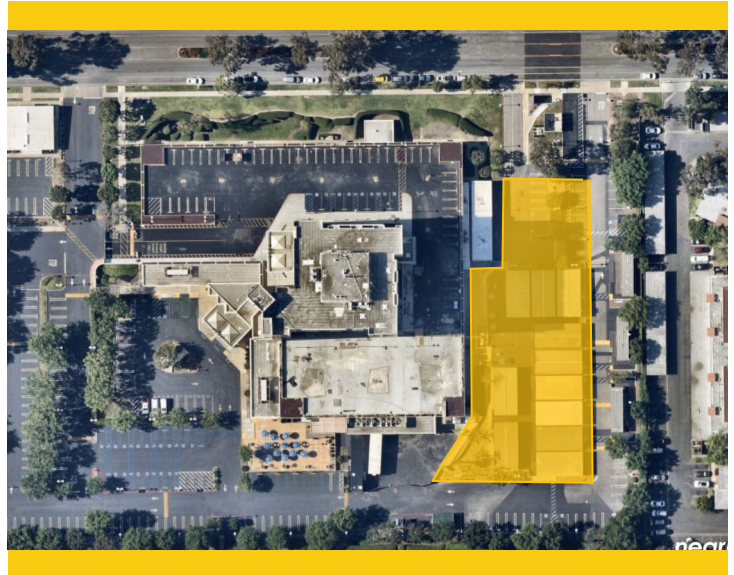
- Total Project Budget\$4,838,537
- Funding SourceMeasure J & Local
 - Measure J\$1,839,000
 - Local Funds.....\$2,999,537
- Estimated Construction Start.....February 2026
- Targeted Construction CompletionJanuary 2027



PROJECT STATUS REPORT — ANAHEIM CAMPUS

RESTORE EAST PARKING LOT CONSTRUCTION DOCUMENTS

Project Manager	Cora Baldovino Project Manager Facilities, Planning, Maintenance and Construction Contracts
Architect of Record	PBK Architects
General Contractor	TBD
Project Delivery Method	Design-Bid-Build
Project Square Footage	Approximate 19,384 SF
DSA Application A#	TBD



Project Overview

This project will restore the East Parking Lot to its original use after dismantling the temporary classrooms that were in operation for the duration of the Anaheim Tower First Floor/Life Safety Renovation project.

- Total Project Budget\$1,622,560
- Funding SourceMeasure J
- Estimated Construction Start.....December 2025
- Targeted Construction CompletionFebruary 2026



PROJECT STATUS REPORT — ANAHEIM CAMPUS

UPDATE/IMPROVE INFRASTRUCTURE

VARIOUS STAGES

Address	1830 W. Romneya Dr.	Total Project Budget	\$1,766,540 (Measure J)
	Anaheim, CA 92801	Total Budget Allocated	\$1,541,602 (Measure J)
Number of Projects	4	Funding Source	Measure J & Capital Outlay

General Overview

The projects will address infrastructure improvements or upgrades throughout the campus. Funds are allocated to projects as needs are identified.



PROJECT STATUS REPORT — ANAHEIM CAMPUS

Swing Space — Interim Housing

June — August

- The Campus Project Team and MAAS Companies, Inc., coordinated the return of personnel temporarily located at the Euclid Center and Printing Shop Department in June. The former building user group (BUG) resumed occupancy at the Anaheim Tower on June 6, while the latter transitioned to its original location in mid-June.
- Starting in August, the modular buildings began the process of disconnecting and dismantling to allow for Mobile Modular to remove the temporary structures from the project site starting August 18. This work is expected to conclude in mid-September.

Swing Space — Hotel, Restaurant, and Culinary Arts (HRC)

June — August

- Upon completing its review of the eight submitted proposals, the Campus Project Team selected firm, YMC, as the general contractor. A Notice to Proceed with dismantling was issued on June 11, with contractor mobilization starting on the same day. Site demolition started shortly thereafter. Prior to the start of these activities, the Hotel, Restaurant, and Culinary Arts Department was moved back to the Anaheim Tower at North Orange Continuing Education (NOCE) - Anaheim Campus.
- Portions of the Bistro and restroom buildings were removed in July followed by the anticipated collection of the kitchen and associated temporary buildings in late August. Coordination is underway with Global Modular and Mobile Kitchens, respectively, for the removals. The removal of all items is planned to take place in August.

Develop Interior and Exterior Signage

June

- Reinforcement bar cages were delivered on site and later set in place to begin the process of establishing footings for the new marquee. Concrete pouring for the foundation was then underway.
- The North Orange Continuing Education (NOCE) canopy letters were fabricated and delivered on-site.

July — August

- The exterior signage has been completed. This includes the new marquee at the main drive aisle, branding signage along the north-facing wall, and



**Develop Interior And Exterior Signage —
Completed Marquee and
NOCE North Facing Wall Branding Signage**



PROJECT STATUS REPORT — ANAHEIM CAMPUS

the NOCE letters on the two canopies at the upper and lower entrances of the Anaheim Tower. A Notice of Completion will be presented to the Board of Trustees in August for approval. Financial close-out is currently underway for the work completed by KYA Group.

Outdoor Patio Remodel

June

- The gate fence was delivered and painted; the hardware was installed on June 17. The Architect of Record (AOR) reviewed and addressed comments to the anchor tables. Upon the conclusion of the remaining construction activities, the project achieved substantial completion on June 25.

July

- A small curb was leveled as required by the State Architect agency field engineer in accordance to state requirements. The space was then opened for use, with students occupying the area shortly thereafter.



Outdoor Patio Remodel — Completed Project

August

- The Campus Project Team is anticipated to make a recommendation for Change Order No. 1 for the remaining unused allowance balance for the Board of Trustees' consideration. A Notice of Completion will also be presented to the Board at the same meeting to trigger the final steps of the close-out process.

Exterior Green Community Space Enhancement

June

- The project progressed through Design Development. The Geotechnical Engineer of Record performed a study and drafted a final report for the Campus Project Team's review on the restoration of the east slope.

July— August

- The project achieved 85 percent Construction Documents (CDs) on July 16. The CDs then proceeded to 95 percent and were finalized prior to sending the submittal to the State Architect agency on July 28.



PROJECT STATUS REPORT — ANAHEIM CAMPUS

Restore East Parking Lot

June — August

- The Design Team began developing the Construction Documents (CDs) that were finalized and submitted to the Campus Project Team. A submittal was made to DSA for its review and approval on July 24. Upon the conclusion of these activities, the project will enter the bidding phase, allowing for the start of the general contractor selection process.





COMPLETED PROJECTS

- CYPRESS CAMPUS
- FULLERTON CAMPUS
- NOCE—ANAHEIM CAMPUS & DISTRICT OFFICES



COMPLETED PROJECTS

Cypress Campus

Project Name	Funding Sources	Final Project Cost	Completion Date	Completion Picture
Swing Space Projects - Gym II Improvements	Measure J	\$124,683	July 2018	
Swing Space Projects - Parking Lot 5 Realignment	Measure J	\$2,001,369	September 2018	
Mass Communications & Security Systems Upgrade: Safety Film	Measure J	\$145,772	January 2019	
Mass Communications & Security Systems Upgrade: Door Replacement	Measure J	\$50,898	January 2019	
Update / Improve Infrastructure: Central Plant Upgrades	Measure J	\$58,768	October 2020	
Baseball Field Improvements	Measure J Local	\$1,920,904 \$159,467	May 2021	
New Science, Engineering, and Mathematics Building	Measure J Local Federal Schedule Maint.	\$92,095,385 \$3,000,000 \$791,352 \$49,281	September 2021	



COMPLETED PROJECTS

Cypress Campus (continued)

Project Name	Funding Sources	Final Project Cost	Completion Date	Completion Picture
Update / Improve Infrastructure (New SEM)	Measure J	\$2,805,131	September 2021	
Update / Improve Infrastructure (IT-New SEM)	Measure J	\$645,883	September 2021	
Mass Communications & Security Systems Upgrade (New SEM)	Measure J	\$389,367	September 2021	
New Veterans' Resource Center / Student Activities Center Expansion	Measure J Local	\$12,071,766 \$89,764	July 2021	
Update / Improve Infrastructure (VRC/SAC)	Measure J	\$1,077,912	July 2021	
Update / Improve Infrastructure (IT-VRC/SAC)	Measure J	\$181,761	July 2021	
Mass Communications & Security Systems Upgrade (VRC/SAC)	Measure J	\$60,938	July 2021	



COMPLETED PROJECTS

Cypress Campus (continued)

Project Name	Funding Sources	Final Project Cost	Completion Date	Completion Picture
Veterans' Memorial Bridge, Plaza, and Tribute Garden	Local	\$1,365,397	July 2021	
Pond Refurbishment	Local	\$623,873	July 2021	
Swing Space - Fine Arts (OLD SEM)	Measure J	\$3,748,140	June 2023	
LLRC Secondary Data Center-Phase II	Measure J	\$473,716	August 2023	
Campus-Wide Security Systems Update (Phase I)	Measure J	\$313,541	August 2023	
Update/Improve Infrastructure (IT)	Measure J Local	\$3,421,310 \$3,780,256	May 2024	
Electrical Vehicles (EV) SCE Charging Stations-Lot 4	Measure J	\$492,000	October 2024	



COMPLETED PROJECTS



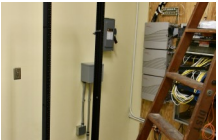



Fullerton Campus

Project Name	Funding Sources	Final Project Cost	Completion Date	Completion Picture
Update and Improve Infrastructure / Buildings 300 -500 Sewer Line	Measure J Scheduled Maint.	\$444,702 \$85,559	July 2020	
Greenhouse Replacement	Measure J Local	\$398,664 \$989,272	August 2021	
Central Plant Replacement & Expansion	Measure J	\$9,004,296	September 2021	
New Instructional Building	Measure J Local	\$50,115,010 \$828,489	March 2022	
Update/Improve Infrastructure (IT-New Instructional Building)	Measure J	\$278,982	March 2022	
Swing Space - New M&O	Measure J	\$150,000	November 2023	
Update/Improve Infrastructure (IT)	Measure J Local	\$7,571,018 \$4,308,585	May 2024	



COMPLETED PROJECTS

NOCE—Anaheim Campus & District Offices

Project Name	Funding Sources	Final Project Cost	Completion Date	Completion Picture
5th Floor CTE Laboratory and 2nd Floor Room 215	Measure J	\$640,736	September 2018	
7th and 10th Floors Buildout	Measure J Measure X	\$915,972 \$4,285,592	June 2019	
Secondary MDF Room	Measure J	\$97,250	March 2021	
Swing Space – Interim Housing	Measure J Local	\$1,655,100,000 \$1,931,335	December 2023	
Update/Improve Infrastructure Swing Space — Interim Housing	Measure J	\$669,290	November 2023	
Update/Improve Infrastructure (IT)	Measure J Local	\$775,062 \$4,896,073	November 2023	
Update/Improve Infrastructure (IT) - AEBG & AZ	Local	\$199,706	May 2024	
Swing Space—Hotel, Restaurant, and Culinary Arts	Measure J Local	\$2,500,000 \$1,300,000	July 2024	
Anaheim Tower First Floor Life/Safety Renovation	Measure J State	\$2,510,440 \$7,059,000 \$647,189	December 2024	



FINANCIAL REVIEW

- Capital Projects Update
- Estimated Project Budgets
- 90-Day Look Ahead Schedule



CAPITAL PROJECT UPDATES

**North Orange County Community College District
Measure J
Capital Projects Update
As of July 31, 2025**

Bond Authorization:

Bond Authorization	574,000,000	100.00%
Bonds Sold - Series A + B + C	400,000,000	69.69%
Available Principal Amount of Bonds	174,000,000	30.31%

Bond Funding Sources (Budget):

		Actual Received	Remaining Balance
Bond Authorization	574,000,000	400,000,000	174,000,000
Estimated Interest Earnings*	31,000,000	30,925,996	74,004
Total Estimated:	605,000,000	430,925,996	174,074,004
Less Cost of Interest	800,000	604,401	195,599
Total Available for allocation:	604,200,000	430,321,595	173,878,405

Cost Status:

Campus	Total Budget	%	Actual Expenses to Date	Remaining Balance
Anaheim Campus	23,377,800	3.86%	10,013,284	13,364,516
Cypress Campus	231,451,200	38.31%	145,938,299	85,512,901
Fullerton Campus	321,126,400	53.15%	119,088,144	202,038,256
District Expenses				
• Program Management	20,000,000	3.31%	11,896,207	8,103,793
• Bond Issuance Cost	3,544,600	0.59%	2,048,689	1,495,911
• Holding Account	4,700,000	0.78%	-	4,700,000
Totals	604,200,000	100.00%	288,984,624	315,215,377



ESTIMATED PROJECT BUDGETS

CYPRESS CAMPUS

CURRENT PROJECTS

PROJECT BUDGET/VARIANCE REPORT—CYPRESS

CURRENT PROJECTS	Measure J Budget APR FY 2024-25	Measure J Budget JUL FY 2025-26	Variance	Measure J Expenses JUL FY 2025-26	Balance
Fine Arts Building Renovation	\$ 56,400,871	\$ 56,400,871	\$ -	\$ 23,174,493	\$ 33,226,378
Softball Field Renovations	\$ 4,000,000	\$ 4,000,000	\$ -	\$ 206,535	\$ 3,793,465
Update/improve Infrastructure	\$ 5,162,876	\$ 5,162,876	\$ -	\$ -	\$ 5,162,876
LLRC Exterior Patio	\$ 1,287,000	\$ 1,287,000	\$ -	\$ 36,900	\$ 1,250,100
Central Plant Upgrade	\$ 4,000,000	\$ 4,000,000	\$ -	\$ -	\$ 4,000,000
Mass Communications & Security Systems Upgrade	\$ 1,942,628	\$ 1,942,628	\$ -	\$ -	\$ 1,942,628
Pool Restoration and Upgrade	\$ 5,500,000	\$ 5,500,000	\$ -	\$ -	\$ 5,500,000
Health Sciences Tech Ed III Renovation	\$ 26,126,990	\$ 26,126,990	\$ -	\$ -	\$ 26,126,990
EV SCE Charging Stations	\$ 492,000	\$ 337,894	\$ (154,106)	\$ 337,894	\$ -
Planning (Non Project Specific)	\$ 4,875,125	\$ 5,029,230	\$ 154,106	\$ 602,610	\$ 4,426,620
COMPLETED PROJECTS					
Swing Space Fine Arts (Old SEM)	\$ 3,748,140	\$ 3,748,140	\$ -	\$ 3,748,140	\$ -
Update/improve Infrastructure (IT)	\$ 3,421,310	\$ 3,421,310	\$ -	\$ 3,421,310	\$ -
New Science, Engineering, and Mathematics Building	\$ 92,095,385	\$ 92,095,385	\$ -	\$ 92,011,542	\$ 83,843
Update/improve Infrastructure (New SEM)	\$ 2,805,131	\$ 2,805,131	\$ -	\$ 2,805,131	\$ -
Mass Communications & Security Systems Upgrade (New SEM)	\$ 389,367	\$ 389,367	\$ -	\$ 389,367	\$ -
Update/Improve Infrastructure (IT - New SEM)	\$ 645,883	\$ 645,883	\$ -	\$ 645,883	\$ -
New Veterans' Resource Center & Student Activities Center Expansion	\$ 12,071,766	\$ 12,071,766	\$ -	\$ 12,071,766	\$ -
Update/Improve Infrastructure (VRC/SAC)	\$ 1,077,912	\$ 1,077,912	\$ -	\$ 1,077,912	\$ -
Mass Communications & Security Systems Upgrade (VRC/SAC)	\$ 60,938	\$ 60,938	\$ -	\$ 60,938	\$ -
Update/Improve Infrastructure (IT - VRC/SAC)	\$ 181,761	\$ 181,761	\$ -	\$ 181,761	\$ -
Baseball Field Improvements	\$ 1,920,904	\$ 1,920,904	\$ -	\$ 1,920,904	\$ -
Update/Improve Infrastructure (Central Plant Enhancements)	\$ 58,768	\$ 58,768	\$ -	\$ 58,768	\$ -
Swing Space - Parking Lot 5 Expansion	\$ 2,001,369	\$ 2,001,369	\$ -	\$ 2,001,369	\$ -
Swing Space - Gym II Renovation	\$ 124,683	\$ 124,683	\$ -	\$ 124,683	\$ -
Swing Space - Old SEM (Roofing)	\$ 76,467	\$ 76,467	\$ -	\$ 76,467	\$ -
Mass Communications & Security Systems Upgrade (Safety Film)	\$ 145,772	\$ 145,772	\$ -	\$ 145,772	\$ -
Mass Communications & Security Systems Upgrade (Door Replacement)	\$ 50,898	\$ 50,898	\$ -	\$ 50,898	\$ -
LLRC Secondary Data center - Phase II	\$ 473,716	\$ 473,716	\$ -	\$ 473,716	\$ -
Campus-Wide Security Systems Upgrade (Phase 1)	\$ 313,541	\$ 313,541	\$ -	\$ 313,541	\$ -
SUB TOTAL	\$ 231,451,200	\$ 231,451,200	\$ 0	\$ 145,938,299	\$ 85,512,900

1. Budget Transfer 2025-059-CC MJ from Fund 49561-CC-EV SCE Charging Station to Fund 49550 CC-Planning (Non Project Specific) to close Project



ENCUMBRANCES OVER \$10,000

CYPRESS CAMPUS - New Encumbrances (May 2025 - July 2025)

Project	Vendor	Purchase Order No.	Purchase Order Amount	Scope of Work
Central Plant Upgrade	Trane U.S., Inc.	P0175403	\$117,805.00	Phase 1 Contract Services for Design
Fine Arts Building Renovation	AJ Kirkwood & Associates Inc.	P0164536	\$11,382.00	Light Fixture Scope of Work Revisions
Fine Arts Building Renovation	AJ Kirkwood & Associates Inc.	P0164536	\$40,779.00	Electrical Lighting Scope of Work Revisions
Fine Arts Building Renovation	BAPKO Metal, Inc.	P0165073	\$17,214.00	Additional Footings for Theater Stage and Rail Modifications
Fine Arts Building Renovation	BAPKO Metal, Incl.	P0165073	\$27,286.00	Stair 4 Removal and Replacement and Scaffolding for Hoist Beam
Fine Arts Building Renovation	Inland Building Companies Inc	P0164711	\$35,465.00	Concrete Scope of Work Modifications for Kiln Yard
Fine Arts Building Renovation	Inland Building Companies Inc	P0164711	\$46,113.00	Concrete Revisions to Roof and Restroom
Fine Arts Building Renovation	Inland Pacific Tile Inc	P0164728	(\$125,000.00)	Tile Work Value Engineering
Fine Arts Building Renovation	Interpipe Contracting Inc	P0164714	\$157,341.00	Contract Increase for Added Demolition Scope of Work
Fine Arts Building Renovation	J G Tate Fire Protection Systems	P0165420	\$11,513.00	Fire Sprinkler Scope of Work
Fine Arts Building Renovation	Ninyo & Moore Geotechnical and Environmental Sciences	P0163437	\$200,000.00	Additional Geotechnical Inspection Services
Fine Arts Building Renovation	PPC Air Conditioning, Inc.	P0164835	\$10,570.00	Additional Scope of work for HHW Shut Off Valves & Duct Reroute and Bim Remodeling
Fine Arts Building Renovation	RVH Constructors, Inc.	P0164539	(\$104,137.00)	Value Engineering Associated Labor, Materials & Equipment Loose Seating and Acoustic Panels
Fine Arts Building Renovation	Vernes Plumbing Inc	P0164544	\$141,359.00	Track Primer Painting; Mop Sink Relocation and Installation



ESTIMATED PROJECT BUDGETS

FULLERTON CAMPUS

CURRENT PROJECTS

PROJECT BUDGET/VARIANCE REPORT—FULLERTON

CURRENT PROJECTS	Measure J Budget APR FY 2024-25	Measure J Budget JUL FY 2025-26	Variance	Measure J Expenses JUL FY 2025-26	Balance
Renovate Buildings 300	\$ 22,982,000	\$ 22,982,000	\$ -	\$ 9,884,456	\$ 13,097,544
New M & O Building	\$ 6,399,604	\$ 6,399,604	\$ -	\$ 5,193,824	\$ 1,205,780
Student Support Center	\$ 28,302,917	\$ 28,302,917	\$ -	\$ 24,285,527	\$ 4,017,391
New Performing Arts Complex—Demolish Buildings 1100 and 1300	\$ 92,005,166	\$ 92,005,166	\$ -	\$ 3,830,220	\$ 88,174,946
Wilshire Chiller Plant Relocation	\$ 14,772,894	\$ 15,726,321	\$ 953,427	\$ 10,759,684	\$ 4,966,637
Softball Field Improvements	\$ 7,000,000	\$ 7,000,000	\$ -	\$ 50,000	\$ 6,950,000
New Welcome Center & Lot C West	\$ 39,000,000	\$ 39,000,000	\$ -	\$ -	\$ 39,000,000
New Horticulture/Lab School/STEM Lab	\$ 25,167,636	\$ 25,167,636	\$ -	\$ -	\$ 25,167,636
Update/improve Infrastructure	\$ 10,630,486	\$ 10,630,486	\$ -	\$ -	\$ 10,630,486
Update/Improve Infrastructure (SS - New M&O)	\$ 150,000	\$ 150,000	\$ -	\$ 114,906	\$ 35,094
New Parking Structure	\$ 6,219,260	\$ 5,265,833	\$ (953,427)	\$ -	\$ 5,265,833
Planning (Non Project Specific)	\$ 683,764	\$ 683,764	\$ -	\$ 371,128	\$ 312,636
COMPLETED PROJECTS					
Update/improve Infrastructure (IT)	\$ 7,571,018	\$ 7,571,018	\$ -	\$ 4,356,745	\$ 3,214,273
New Instructional Building	\$ 50,115,010	\$ 50,115,010	\$ -	\$ 50,115,010	\$ -
Central Plant Replacement & Expansion	\$ 9,004,296	\$ 9,004,296	\$ -	\$ 9,004,296	\$ -
Greenhouse Replacement	\$ 398,664	\$ 398,664	\$ -	\$ 398,664	\$ -
Update/Improve Infrastructure (IT - Instructional Bldg.)	\$ 278,982	\$ 278,982	\$ -	\$ 278,982	\$ -
Update/Improve Infrastructure (Bldg. 300-500 Sewer Line)	\$ 444,702	\$ 444,702	\$ -	\$ 444,702	\$ -
SUB TOTAL	\$ 321,126,400	\$ 321,126,400	0	\$ 119,088,144	\$ 202,038,255

1. Budget Transfer Request 2025-060 MJ FC from New Parking Structure Project to Wilshire Chiller Plant Relocation Project



ENCUMBRANCES OVER \$10,000

FULLERTON CAMPUS - New Encumbrances (May 2025 - July 2025)

zProject	Vendor	Purchase Order No.	Purchase Order Amount	Scope of Work
New M &O Building	Twining Consulting	P0160831	\$35,000.00	Additional Lab of Record Testing Services
New Horticulture/Lab School/STEM Lab	MAAS Companies, Inc	P0174547	\$71,440.00	Project Support
New Performing Arts Complex - Demolish Bldgs 1100 and 1300	Dudek	P0174647	\$21,250.00	Paleontological Monitoring Services
Renovate Building 300	Infotox Inc	P0163612	\$0.00	Hazardous Materials Abatement for FC Bldg. 300
Renovate Building 300	Krueger International Inc	P0175101	\$47,745.43	Additional Lecture Podiums
Renovate Building 300	Ninyo & Moore Geotechnical and Environmental Sciences	P0165089	\$0.00	Additional LOR services
Renovate Building 300	Ollivier Corporation	P0175217	\$68,179.30	Building Access Control Components
Renovate Building 300	VectorUSA	P0174755	\$128,547.96	Wireless Access Points Installation
Softball Field Improvements	Geotechnical Solutions Inc.	P0174797	\$17,000.00	Field Percolation and Infiltration Testing
Softball Field Improvements	Westberg + White Inc	P0175070	\$17,754.00	Subsurface Utility Mapping Services
Softball Field Improvements	Westberg + White Inc	P0175667	\$400,000.00	Agreement for Architectural Services
Student Support Center	Corporate Business Interiors Inc	P0175921	\$11,720.00	Additional Labor for Staircase Placement



ENCUMBRANCES OVER \$10,000

FULLERTON CAMPUS - New Encumbrances (May 2025 - July 2025)

Project	Vendor	Purchase Order No.	Purchase Order Amount	Scope of Work
Student Support Center - Former CNIB	NMK Corporation	P0175098	\$11,970.43	Procurement of Aruba Components
Student Support Center - Former CNIB	Twining Consulting	P0160831	\$35,000.00	Additional Materials and Special Testing Services
Student Support Center - Former CNIB	VectorUSA	P0171072	\$21,964.63	Additional Telecommunications Components
Wilshire Chiller Plant Relocation	Geotechnical Solutions Inc.	P0162117	\$15,000.00	Geotechnical Engineering Observation & Testing
Wilshire Chiller Plant Relocation	MAAS Companies, Inc	P0161764	\$196,395.00	Contract Increase for Project Management Services
Wilshire Chiller Plant Relocation	Plumbing Piping & Construction Inc	P0166314	\$663,490.00	Contract increase for Calendar Day Contract Extension
Wilshire Chiller Plant Relocation	Vital Inspection Services, Inc.	P0164386	\$73,542.00	Inspection of Record (IOR) Services-FC WCR



ESTIMATED PROJECT BUDGETS

ANAHEIM CAMPUS

CURRENT PROJECTS

PROJECT BUDGET/VARIANCE REPORT—ANAHEIM

CURRENT PROJECTS	Measure J Budget APR FY 2024-25	Measure J Budget JUL FY 2025-26	Variance	Measure J Expenses JUL FY 2025-26	Balance
Swing Space Hotel, Restaurant, and Culinary Arts	\$ 2,500,000	\$ 2,500,000	\$ -	\$ 2,167,503	\$ 332,497
Anaheim Campus Tower First Floor Life/Safety Renovation	\$ 2,560,440 ¹	\$ 2,510,440	\$ (50,000)	\$ 1,996,618	\$ 513,822
Develop Interior and Exterior Signage	\$ 1,087,431	\$ 1,087,431	\$ -	\$ 236,246	\$ 851,185
Restore East Parking Lot	\$ 1,622,560	\$ 1,622,560	\$ -	\$ 10,970	\$ 1,611,590
Exterior Green Community Space Enhancement	\$ 1,839,000	\$ 1,839,000	\$ -	\$ 90,396	\$ 1,748,604
2nd Floor Lobby Remodel	\$ 813,000	\$ 813,000	\$ -	\$ -	\$ 813,000
Upper Deck Enhancements	\$ 309,901	\$ 309,901	\$ -	\$ -	\$ 309,901
1st. Floor Remodel Student Center and Classrooms	\$ 2,352,720	\$ 2,352,720	\$ -	\$ -	\$ 2,352,720
Pedestrian and Vehicular Traffic Flow	\$ 2,329,000	\$ 2,329,000	\$ -	\$ -	\$ 2,329,000
4th Floor Improvements	\$ 218,000	\$ 218,000	\$ -	\$ -	\$ 218,000
Outdoor Patio Remodel	\$ 1,382,500	\$ 1,382,500	\$ -	\$ 982,443	\$ 400,057
Update/improve Infrastructure	\$ 224,938	\$ 224,938	\$ -	\$ -	\$ 224,938
Planning (Non Project Specific)	\$ 1,440,000	\$ 1,440,000	\$ -	\$ 16,315	\$ 1,423,685
COMPLETED PROJECTS					
Update/improve Infrastructure (IT)	\$ 775,062	\$ 775,062	\$ -	\$ 775,062	\$ -
Update/improve Infrastructure (Swing Space-IH)	\$ 669,290	\$ 669,290	\$ -	\$ 669,290	\$ -
Swing Space Projects-Interim Housing	\$ 1,600,000 ¹	\$ 1,650,000	\$ 50,000	\$ 1,414,483	\$ 235,517
Update/Improve Infrastructure (Secondary MDF)	\$ 97,250	\$ 97,250	\$ -	\$ 97,250	\$ -
7th and 10th Floors Buildout	\$ 915,972	\$ 915,972	\$ -	\$ 915,972	\$ -
5th Floor CTE & 2nd Floor Room 215	\$ 640,736	\$ 640,736	\$ -	\$ 640,736	\$ -
SUB TOTAL	\$ 23,377,800	\$ 23,377,800	\$ -	\$ 10,013,284	\$ 13,364,516

1. Budget Transfer 2025-054-AC MJ from Anaheim Tower 1st Floor to Swing Space-Interim Housing Project



ENCUMBRANCES OVER \$10,000

ANAHEIM CAMPUS - New Encumbrances (May 2025 - July 2025)

Project	Vendor	Purchase Order No.	Purchase Order Amount	Scope of Work
Anaheim Tower First Floor Life/Safety Renovation	PCL Construction Services Inc	P0174756	\$64,080.35	Furnish and Install Roof Ladders
Exterior Green Community Space Enhancement	Division of the State Architect	P0175803	\$30,180.00	DSA Project Registration Fee
Restore East Parking Lot	VCA Engineers Inc	P0176080	\$19,800.00	Topographical Survey
Swing Space—Hotel, Restaurant, and Culinary Arts	YMC	P0174760	\$97,900.00	Demolition General Contracting Services



ESTIMATED PROJECT BUDGETS

DISTRICT

PROJECT BUDGET/VARIANCE REPORT—DISTRICT

DISTRICT WIDE EXPENSE	Measure J Budget APR FY 2024-25	Measure J Budget JUL FY 2025-26	Variance	Measure J Expenses JUL FY 2025-26	Balance
Program Management Fees	\$ 20,000,000	\$ 20,000,000	\$ -	\$ 11,896,207	\$ 8,103,793
Bond Issuance Cost	\$ 3,544,600	\$ 3,544,600	\$ -	\$ 2,048,689	\$ 1,495,911
Holding Account*	\$ 4,700,000	\$ 4,700,000	\$ -	\$ -	\$ 4,700,000
SUB TOTAL	\$ 28,244,600	\$ 28,244,600	\$ -	\$ 13,944,896	\$ 14,299,704

* Holding Account Project was moved from Anaheim to the District



ENCUMBRANCES OVER \$10,000

DISTRICT - New Encumbrances (May 2025 - July 2025)

Project	Vendor	Purchase Order No.	Purchase Order Amount	Scope of Work
Bond Program Management	MAAS Companies, Inc.	Pending	\$3,082,622.00	Contract Extension for Bond Program Management



ACTIVE PROJECTS

90 - DAY LOOK AHEAD

NORTH ORANGE COUNTY COMMUNITY COLLEGE DISTRICT
CYPRESS - FULLERTON - ANAHEIM (NOCE)
90-DAY LOOK AHEAD SCHEDULE
(08-01-25 TO 10-31-25)

	August				September				October				Comments	
	5	12	19	26	2	9	16	23	30	7	14	21		28
GENERAL														
NOCCCD Board Meetings														August 26th, September 9th, 23rd, October 14, 28 (Anaheim - NOCE Campus)
COC Meetings														September 3rd (In Person Meeting at Anaheim - NOCE Campus)
Bond Program Management Team Meetings														August 19th, September 16th, October 21 (meetings held via Teams)
PROFESSIONAL SERVICES PROCUREMENT - RFP/RFQ														
FULLERTON														
New Horticulture/Lab School/STEM Lab														
Proposal Review and Selection for Planning Architect														Complete (RFP Cancelled to be Succeeded by RFP for Architect of Record)
RFP for Architect of Record														Upcoming (RFP Under Development Milestone's Completion is Anticipated in October)
Board Agenda Item														Upcoming (Contingent Upon the Completion of Architect of Record Selection)
Infrastructure Assessment														
Campus Review and Selection Process														Complete (Firm Selected)
Board Agenda Item														Upcoming (Consultant for Infrastructure Assessment Anticipated August 26)
PLANNING														
FULLERTON														
New Horticulture/Lab School/Stem Lab														Upcoming (Design Anticipated to Start in End of October)
DESIGN PHASE														
ANAHEIM														
Exterior Green Community Space Enhancement														
Construction Documents														Complete (100 Percent Construction Documents Submitted on July 28)
Restore East Parking Lot														
Construction Documents														Complete
CYPRESS														
LLRC Exterior Patio														
Schematic Design/Design Development														In Progress
Construction Documents														In Progress (Anticipated in mid-August Predicated on the Completion of Schematic Desig/Design Development Package)
Softball Field Renovations														
Construction Documents														In Progress (60% Construction Documents Under Review by Campus Project Team)
Central Plant Upgrade														
Schematic Design/Programming Validation														In Progress
Design Development														Upcoming (Anticipated in December Predicated on the Completion of Schematic Design/Design Development)
FULLERTON														
Softball Field Improvements														
Design Development														Complete on July 7
Construction Documents														In Progress



ACTIVE PROJECTS

90 - DAY LOOK AHEAD

NORTH ORANGE COUNTY COMMUNITY COLLEGE DISTRICT
CYPRESS - FULLERTON - ANAHEIM (NOCE)
90-DAY LOOK AHEAD SCHEDULE
(08-01-25 TO 10-31-25)

	August				September				October				Comments	
	5	12	19	26	2	9	16	23	30	7	14	21		28
BIDDING														
ANAHEIM														
Exterior Green Community Space Enhancement														
Procurement														Upcoming (General Contractor Selection Predicated on the Completion of DSA Review and Approval)
Restore East Parking Lot														
Procurement														Upcoming (General Contractor Selection Predicated on the Completion of DSA Review and Approval)
PRE-CONSTRUCTION PHASE														
FULLERTON														
New Performing Arts Complex														
Mobilization and Site Logistics Set-up														Complete
CONSTRUCTION PHASE														
ANAHEIM														
Swing Space - Interim Housing														
Remaining Temporary Modular Building Moving Activities														Upcoming (Anticipated in Early August)
Disconnection of Utilities														Upcoming (Anticipated in August and Predicated on the Completion of Moving Activities to the Tower)
Dismantling and Removal of Modular Buildings														Upcoming (Anticipated in mid-August and Predicated on the Disconnection of the Modular Buildings)
Develop Interior and Exterior Signage														
Marquee Signage Installation														Complete
CYPRESS														
Swing Space - HRC														
Moving Activities														Complete
Utility Disconnect and Selective Site Demolition														In Progress
Modular Building Preparation and Removal														Upcoming (Anticipated in August and Predicated on Coordination with Mobile Kitchens and Global Modular)
Fine Arts Building Renovation														
Building Enclosure														
Window Activities														In Progress (Window Installation, Testing, Glazing, and Louvers Installation at North, South, East, West)
Roof														In Progress (Skylight Enclosure Installation)
Exterior Improvements														
Humanities - West Path of Travel														Complete
Kiln Yard														In Progress (Recondition Soil Grade, Reinforcement Bar Placement for Slab on Grade; Slab on Grade Pour, Kiln Installation, Finishes)
Generator & Fire Pump Room														Complete
Site Work														In Progress (Preparations for Grading; Hardscaping; Irrigation Sleeve Placement Upcoming in South; Flatwork Upcoming at West, East)
Interior Improvements														
Drywall Taping and Sanding														Complete
In-Wall Mechanical Electrical and Plumbing Installation														In Progress (On the First Floor at Classrooms, Restrooms, Lobby)
BDF and IDF Rooms														In Progress (Installation on All Levels for Painting; Switch, Cable, Electrical and Plumbing in Wall, Door Frames, Insulation Installation)
Finishes														In Progress (Third Floor Restrooms, Hall and Instrumental Labs, Lobby, Restrooms)



ACTIVE PROJECTS

90 - DAY LOOK AHEAD

NORTH ORANGE COUNTY COMMUNITY COLLEGE DISTRICT
CYPRESS - FULLERTON - ANAHEIM (NOCE)
90-DAY LOOK AHEAD SCHEDULE
(08-01-25 TO 10-31-25)

	August				September				October				Comments	
	5	12	19	26	2	9	16	23	30	7	14	21		28
CONSTRUCTION PHASE														
FULLERTON														
Renovate Building 300														
Building Enclosure														
Historical Restoration														
In Progress (Window Restoration, Decorative Restoration, Historical Concrete Façade Restoration, Historic Light Fixture Installation)														
Exterior Improvements														
Stair Reconstruction														
In Progress (Wall Cap Installation, Railing Placement, Electrical Step Lights, and Tiling at South and North Stairs)														
Interior Improvements														
Ceiling Grid Installation														
In Progress (Installation on First Floor)														
Fiber Reinforced Polymer														
In Progress (First Floor Pending CCD 14 and 15)														
Wood Door Frame Restoration														
In Progress														
Mechanical, Electrical, and Plumbing Finishes														
Complete														
Drywall Hanging														
Complete														
Taping and Sanding														
Complete														
Primer and Painting														
In Progress (Primer and Pain Application on First Floor; Intumescent Paint Application to second Floor Plaster Ceiling)														
Restroom Tiling														
In Progress (All Floors)														
Finishes														
In Progress (Doors & Hardware, Roller Shades, Projector Screens, Marker Boards, Tackboards, Flooring, Painting Finishes)														
Site Work and Landscaping														
Sidewalk Construction and Concrete Pour														
In Progress (South and West Sidewalk and Courtyard)														
Landscaping														
Upcoming (Anticipated to Start in September)														
New Performing Arts Complex														
West Building														
Foundation Work														
In Progress (Drill Caissons; Pile Cap Placement; Grade Beam Concrete Pour; CMU Placemnet, Waterproofing)														
Recital Hall Structure														
Upcoming (Excavation, Sand Gravel, Vapor Barrier Placement, Form Hanging, Rebar Placement, and Slab on Grade Pour)														
Slab on Grade														
Upcoming (Excavation, Telecom and Electrical Rough In, Backfilling, Slab on Grade Pouring)														
Site Demolition and Excavation														
In Progress														
Existing Utility Relocation														
In Progress														
Update/Improve (SS-New M&O)														
Final Relocation of Bins and Dismantling of Swing Spcae														
Upcoming (Anticipated in August or September)														
New M&O Building														
Exterior, Building Enclosure & Site Improvements														
Vehicular Gate														
Complete														
Interior Improvements														
Final Fire Inspection														
Complete														
Moving Activities														
Complete														
Student Support Center														
Offsite Improvements														
Complete														
FDC Connection														
Complete														
Interior Improvements														
Final Fire Inspection														
Complete														
Finishes														
Complete														
Commissioning and Energizing Testing														
Complete														
Moving Activities														



ACTIVE PROJECTS

90 - DAY LOOK AHEAD

NORTH ORANGE COUNTY COMMUNITY COLLEGE DISTRICT
CYPRESS - FULLERTON - ANAHEIM (NOCE)
90-DAY LOOK AHEAD SCHEDULE
 (08-01-25 TO 10-31-25)

	August				September				October				Comments	
	5	12	19	26	2	9	16	23	30	7	14	21		28
CONSTRUCTION PHASE														
FULLERTON														
Wilshire Chiller Plant Relocation														
Building Foundation Work and Exterior Improvements														
Mechanical Electrical Pads														
Underground Mechanical, Electrical, and Plumbing														
Building Envelope														
Concrete Masonry Unit (CMU) Wall Installation														
Steel/Slab on Deck														
Roofing														
Mechanical, Electrical & Plumbing														
Exterior Sheathing (CMU & Stud Framed Walls)														
Exterior Plaster Activities														
Interior Improvements														
Slab on Grade														
Metal Stud Framing														
Drywall Activities														
Finishes														
Southern California Edison (Power for Chiller Plant)														
CLOSE-OUT PHASE														
ANAHEIM														
Develop Interior and Exterior Signage														
Substantial Completion														
Financial Close-Out														
Outdoor Patio Remodel														
Substantial Completion														
Punch-List Activities														
Financial Close-Out														
Swing Space Interim Housing														
Substantial Completion														
Punch-List Activities														
Financial Close-Out														
CYPRESS														
Swing Space - Hotel, Restaurant, and Culinary Arts														
Substantial Completion														
Punch-List Activities														
Financial Close-Out														
FULLERTON														
New M&O Building														
Punch-List / Final Completion														
Financial Close-Out														
Student Support Center														
Punch-List / Final Completion														
Financial Close-Out														



September 2025

Citizens' Oversight Committee

COC

Measure J Bond Program



1830 W. Romneya Dr., Building B., Anaheim, CA 92801