

June 2026



**CAPITAL PROJECTS REPORT**  
to the

**Citizens' Oversight Committee**

MAAS

# TABLE OF CONTENTS

## Active Project Status Report

### *Cypress Campus*

Campus Aerial View.....	2
Fine Arts Building Renovation.....	3
Softball Field Renovations.....	4
LLRC Exterior Patio.....	5
Central Plant Upgrade.....	6
SEM (FASS) Building 3 Demolition and Site Restoration.....	7
Updates on Campus Projects - Cypress College.....	8-10

### *Fullerton Campus*

Campus Aerial View.....	11
Renovate Buildings 300.....	12
New Maintenance & Operations Building.....	13
Student Support Center.....	14
New Performing Arts Complex - Demolish Buildings 1100 and 1300.....	15
Wilshire Chiller Plant Relocation.....	16
New Horticulture/Lab School/STEM Lab.....	17
Softball Field Improvements.....	18
Chapman Avenue Site Acquisition.....	19
Update/Improve Infrastructure.....	20
Updates on Campus Projects - Fullerton College.....	21-25

### *NOCE - Anaheim Campus*

Campus Aerial View.....	26
Develop Interior and Exterior Signage.....	27
Restore East Parking Lot.....	28
Exterior Green Community Space Enhancement.....	29
Update/Improve Infrastructure.....	30
Updates on Campus Projects - Anaheim Campus.....	31-32

## Completed Projects

Cypress College.....	34-35
Fullerton College.....	36
NOCE - Anaheim Campus & District Offices.....	37

## Financial Review

<i>Capital Project Updates - Measure J</i> .....	39
Estimated Project Budgets & Purchase Orders Over \$10,000.....	40-47
Cypress Campus.....	40-41
Fullerton Campus.....	42-43
NOCE - Anaheim Campus.....	45-46
District.....	46-47
90-Day Look Ahead Schedule.....	48-50

# Active Project Status Report

## Campus Projects

- Cypress
- Fullerton
- Anaheim and District Offices



# AERIAL VIEW — CYPRESS CAMPUS PROJECTS

9200 Valley View Street, Cypress, CA 90630



Fine Arts Building  
Renovation  
[Construction]



Central Plant Upgrade  
[Design - Design  
Development]



SEM (FASS) Building 3  
Demolition and Site Restoration  
[Upcoming Planning]



Softball Field Renovations  
[Design-California  
Geological Survey Review]



Swing Space Project - Hotel, Restaurant, and Culinary Arts  
[Close-Out]

\*Refer to pages 32 and 35 for more details



LLRC Exterior Patio  
[Design-Construction Documents]



# PROJECT STATUS REPORT — CYPRESS CAMPUS

## FINE ARTS BUILDING RENOVATION CONSTRUCTION

<b>Project Manager</b>	<b>Allison Coburn</b> Project Manager Campus Capital Projects
<b>Construction Manager</b>	<b>Sundt Construction, Inc.</b>
<b>Architect of Record</b>	<b>DLR Group</b>
<b>Project Delivery Method</b>	<b>Construction Manager Multi-Prime</b>
<b>Project Square Footage</b>	<b>66,765 GSF</b>
<b>DSA Application A#</b>	<b>04-120539</b>



### Project Overview

The Fine Arts Building will undergo a structural and interior renovation to enhance students’ academic experience. Improvements will be made to the recording arts, rehearsal and performance spaces for music instruction, along with spaces for one-on-one sessions. Existing vacant spaces not currently configured for instruction will be utilized. Noise intrusion mitigation work will ensue to minimize disruptions to instruction and music practice. New technology will be installed to support current instructional methodologies and pedagogies. The existing mechanical, electrical, and plumbing systems will be replaced. Restrooms will be updated for code-compliance. DSA-designated seismic upgrades also are planned.

### Budget & Construction Costs

- Total Project Budget.....\$77,289,871
- Funding Sources.....Measure J & State
- Measure J.....\$56,400,871
- State Capital Outlay.....\$20,889,000

### Schedule

- Construction Start.....April 2024
- Targeted Construction Completion.....June 2026
- Targeted Occupancy.....Fall 2026



# PROJECT STATUS REPORT — CYPRESS CAMPUS

## SOFTBALL FIELD RENOVATIONS

### DESIGN — CALIFORNIA GEOLOGICAL SURVEY (CGS) REVIEW

<b>Project Manager</b>	<b>Allison Coburn Project Manager Campus Capital Projects</b>
<b>Architect of Record</b>	<b>SGH Architects</b>
<b>General Contractor</b>	<b>TBD</b>
<b>Project Delivery Method</b>	<b>Design-Bid-Build</b>
<b>Project Square Footage</b>	<b>3,373 GSF</b>
<b>DSA Application A#</b>	<b>TBD</b>



### Project Overview

This project will feature new field amenities, including bleachers with an elevated press box, new backstop fencing and netting, new dugouts, storage facilities, enhanced landscaping and hardscaping around the fields, and improvements to comply with the Americans with Disabilities Act (ADA).

### Budget & Construction Costs

- Project Budget.....\$4,250,000
- Funding Sources.....Measure J, Local
  - Measure J.....\$4,000,000
  - Local.....\$250,000
- Estimated Construction Start.....Summer 2027
- Estimated Construction Completion.....Spring 2028



# PROJECT STATUS REPORT — CYPRESS CAMPUS

## LIBRARY & LEARNING RESOURCE CENTER (LLRC) EXTERIOR PATIO DESIGN — CONSTRUCTION DOCUMENTS

<b>Project Manager</b>	<b>Anne Acurso Project Manager Campus Capital Projects</b>
<b>Architect of Record</b>	<b>SGH Architects</b>
<b>General Contractor</b>	<b>TBD</b>
<b>Project Delivery Method</b>	<b>Design-Bid-Build</b>
<b>Project Square Footage</b>	<b>Approximately 7,500 GSF</b>
<b>DSA Application A#</b>	<b>TBD</b>



### Project Overview

This project will create areas for student use and campus events including new hardscape, landscape, lighting, and furniture.

### Budget & Construction Costs

- Project Budget.....\$1,900,000
- Funding Sources.....Measure J
- Estimated Construction Start.....Summer 2027
- Estimated Construction Completion.....Fall 2027



# PROJECT STATUS REPORT — CYPRESS CAMPUS

## CENTRAL PLANT UPGRADE DESIGN - DESIGN DEVELOPMENT

<b>Project Manager</b>	<b>Allison Coburn Project Manager Campus Capital Projects</b>
<b>Architect of Record</b>	<b>N/A</b>
<b>General Contractor</b>	<b>Trane U.S., Inc.</b>
<b>Project Delivery Method</b>	<b>Design-Build</b>
<b>Project Square Footage</b>	<b>Approximately 5,645 GSF</b>
<b>DSA Application A#</b>	<b>TBD</b>



### Project Overview

The project will involve expanding the capacity of the existing south central plant by installing new chillers, re-configuring piping to support the entire campus loop, and refurbishing the cooling towers in both the north and south central plants. Phase 1 will focus on conducting field investigations to assess existing conditions, creating Schematic Design Documents, and finalizing the Guaranteed Maximum Price (“GMP”) for turnkey services. This will set the stage for Phase 2, which will include completing the Design Documents, securing DSA approval, and carrying out the necessary construction work.

### Budget & Construction Costs

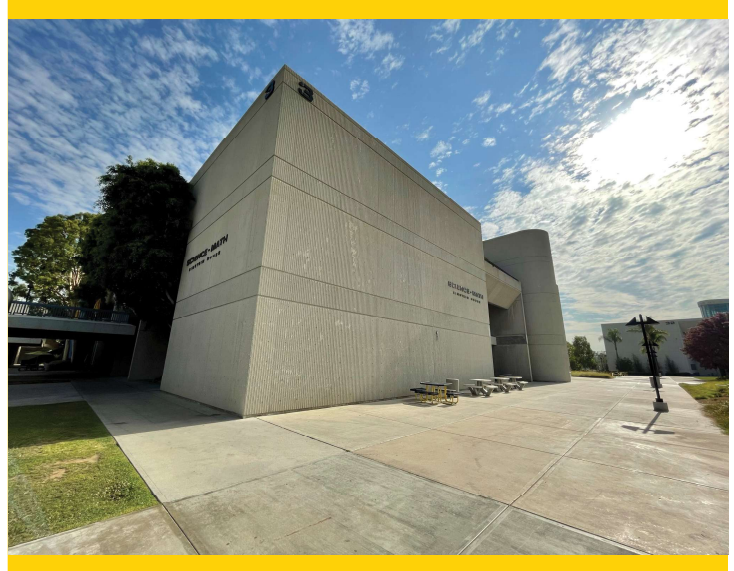
- Project Budget.....\$4,000,000
- Funding Sources.....Measure J
- Estimated Construction Start.....Summer 2027
- Estimated Construction Completion.....Fall 2027



# PROJECT STATUS REPORT — CYPRESS CAMPUS

## SEM (FASS) BUILDING 3 DEMOLITION AND SITE RESTORATION UPCOMING PLANNING

<b>Project Manager</b>	<b>Allison Coburn</b> Project Manager Campus Capital Projects
<b>Architect of Record</b>	N/A
<b>General Contractor</b>	TBD
<b>Project Delivery Method</b>	Design-Bid-Build
<b>Project Square Footage</b>	Approximately 100,681 GSF
<b>DSA Application A#</b>	TBD



### Project Overview

The FASS building (formerly SEM) was originally constructed in 1972 as the Science, Engineering, and Math facility. It is a three-story structure totaling approximately 100,681 square feet of interior space. The building is currently being used as temporary swing space while the College completes the Fine Arts Renovation project.

Once the renovation is finished and occupants relocate to the newly renovated facility, the FASS building will be vacated and scheduled for demolition. The campus cannot sustainably maintain and operate this aging facility—particularly since it has been functionally replaced by the new SEM Building 35, would require substantial system upgrades to remain in service, and is no longer necessary to support current programmatic needs.

The Demolition and Site Restoration project will remove the existing structure and transform the site into a mix of hardscape and landscaped areas, providing new gathering and event spaces for the campus community.

### Budget & Construction Costs

- Project Budget.....\$11,123,000
- Funding Sources.....Measure J
- Estimated Demolition Start.....Summer 2027
- Estimated Construction Completion.....Summer 2028



# PROJECT STATUS REPORT — CYPRESS CAMPUS



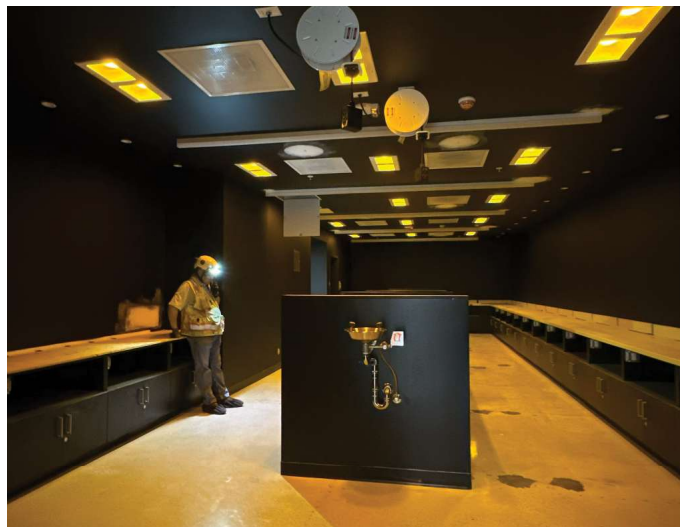
Fine Arts Building Renovation  
Wood Slat Installation

## Fine Arts Building Renovation

- The project has achieved 90 percent completion; crews are winding down as final items are being addressed. Testing continues for the exterior storefront windows. Three windows remain to be retested to assure conformity to state standards. A plan is set in place to resolve adjustments to any of the windows prior to the conclusion of testing.
- Hot rubberized waterproofing is being applied to the second-floor piazza entrances to secure these areas from inclement weather in the future.
- Interior finishes are progressing as the remaining items are being installed on all floors. Doors (including those minimizing sound transmission) were delivered, acclimated and placed at the labs, office spaces, and

classrooms along with associated hardware. Minor repairs are being addressed for polished floors, and final carpeting activities are underway in the lobbies. Acoustic Ceiling Tile (ACT) is set in place throughout the building. Wood slats were received and acclimated in early May prior to their installation along the walls of the third-floor recital hall.

- Furniture installation progressed with the placement of instructor stations, audio-visual, computer, and woodworking equipment. Steel cabinets and counter-tops were installed at the first-floor labs.
- Renovation work on the existing elevator progressed. Interior cab panels were set in place. State inspections followed in May. The new elevator passed state inspections in April after finalizing the smoke guard; this elevator achieved operability as of the second week of April and is available to support all remaining construction activities in the building.
- Between March and April, all lighting fixtures and fire alarm devices were installed throughout the building aside from the elevator renovation; this item will be fitted in place prior to state testing. The lighting controls were programmed on all floors and the commissioning agent reviewed the work for completion. Some minor items were addressed by the lighting trade contractor, as a result. Preliminary testing has been completed on the fire alarms after the system was connected to the campus.
- Commissioning activities are underway with regular check-ins by the project Commissioning Agent (CxA). Testing and balancing were conducted after the delivery and installation of wood doors. Feedback was provided to the Design Team and commissioning agent based on the 75 percent preliminary report; some minor adjustments were later addressed. Crews are now



Fine Arts Building Renovation  
Photography Dark Room



# PROJECT STATUS REPORT — CYPRESS CAMPUS

conducting functional performance testing starting in the first week of May to verify the operability of heating and cooling, electrical, and control systems.

- Signage and accessories have been installed throughout the building including room numbering. Landscaping activities also are completed after placing plants around the exterior spaces of the building. The seismic retrofit at the South Piazza Bridge is nearing completion. Finally, structural steel gates have been set in place at the kiln yard.
- Multiple change orders were presented to the Board of Trustees for its consideration at the meeting in May. The project is on track to achieve substantial completion on June 9.

## Softball Field Renovations

- A submittal to the California Geological Survey (CGS) was made on February 24. Since then, the project remains under review with CGS. A response with comments is pending from the agency in late May or June.
- Once the project receives agreement from CGS, the Design Team will incorporate the soils report into the final Construction Documents re-submittal to DSA for its final review and approval.



Softball Field Renovations  
Design Rendering

## Library & Learning Resource Center (LLRC) Exterior Patio

- The project remains in the design phase as the Architect of Record, SGH Architects, completed the 60 percent Construction Documents in mid-March, followed by Campus review. Campus comments were received by the Design Team and addressed, authorizing the project to proceed with the 100 percent Construction Documents. An appointment with DSA was requested by the start of May in preparation for a June 22 submittal to the state agency.
- The Campus Project Team has negotiated an increase to SGH Architects' contract based on the additional services required to address the wind screen solution for implementation in the project. A Board Agenda Item was presented to the Board of Trustees for its consideration at the May 12 meeting. The District is now in the process of executing this contract.

## Central Plant Upgrade

- The finalized Guaranteed Maximum Price (GMP) package was provided by Trane, U.S. for a total cost of approximately \$4.85M for phase two activities. After a period of review and negotiations, the Campus Project Team, in agreement with Cypress Leadership, has opted to proceed with the GMP to meet current campus cooling requirements and redundancy needs. This is after the Campus Project Team engaged third party cost estimator, O'Connor Construction Management, Inc., for an estimate that confirmed the GMP is reasonable and falls within industry standards. A Board

# PROJECT STATUS REPORT — CYPRESS CAMPUS

Agenda Item was presented to the Board of Trustees for its consideration at the first meeting in May. Upon receiving the Board's approval, the District began executing the contract. As this decision was made after financial reporting for this period closed, this report does not include the discussed budget increase. The updated budget for the Central Plant Upgrade will be presented in the September COC report.

- The second phase of the project encompassing Design Development, Construction Documents, and construction, began in late May once this portion's contract was executed by the District. The scope of work will include procuring, placing, and programming two chiller plants, cooling towers, accessories and components required for its full functionality.

## **SEM (FASS) Building 3 Demolition and Site Restoration**

- The project remains in planning. The Design phase is expected to start with the release of a Request for Proposals (RFP) for Architect of Record Selection in July to the existing District pool of pre-qualified Architects. Upon the conclusion of this selection process, a Board Agenda Item is expected to be presented to the Board of Trustees for its consideration. Once the contract is fully executed by the District, design activities will kick off with the selected Architect of Record on board.



# AERIAL VIEW — FULLERTON CAMPUS PROJECTS

321 CHAPMAN AVENUE, FULLERTON, CA 92832



New Maintenance and Operations Building  
[Close-Out]



New Horticulture/Lab School/STEM Lab  
[CCCCO Review]



Softball Field Improvements  
[Bidding]



New Performing Arts Complex - Demolish Buildings 1100 and 1300  
[Construction]



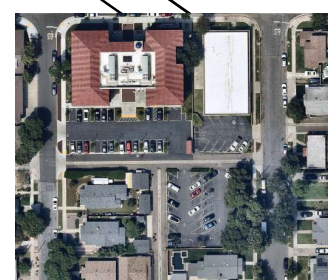
Renovate Building 300  
[Close-Out]



Wilshire Chiller Plant Relocation  
[Close-Out]



Student Support Center  
[Close-Out]



Chapman Avenue Site Acquisition  
[Purchase Executed]



# PROJECT STATUS REPORT — FULLERTON CAMPUS

## RENOVATE BUILDING 300 CLOSE-OUT

<b>Project Manager</b>	Joel Gonzalez Project Manager Campus Capital Projects
<b>Construction Manager</b>	Simpson & Simpson
<b>Architect of Record</b>	Westberg + White
<b>General Contractor</b>	Icon West
<b>Project Delivery Method</b>	Design-Bid-Build
<b>Project Square Footage</b>	22,705 GSF
<b>DSA Application A#</b>	04-118314, 04-121906



### Project Overview

A total renovation of Building 300, including seismic enhancements and historic consideration, have been completed under the project’s scope of work. The building now contains new classrooms, dean and faculty offices, shared laboratories, and improved foundations for a safer built environment.

### Budget & Construction Costs

- Total Project Budget.....\$31,347,546
- Funding Source.....Measure J, State Capital Outlay & Local
- Measure J.....\$22,065,685
- State Capital Outlay.....\$11,272,621
- Local Funds.....\$9,240

### Schedule

- Construction Start.....May 2024
- Construction Completion.....January 2026

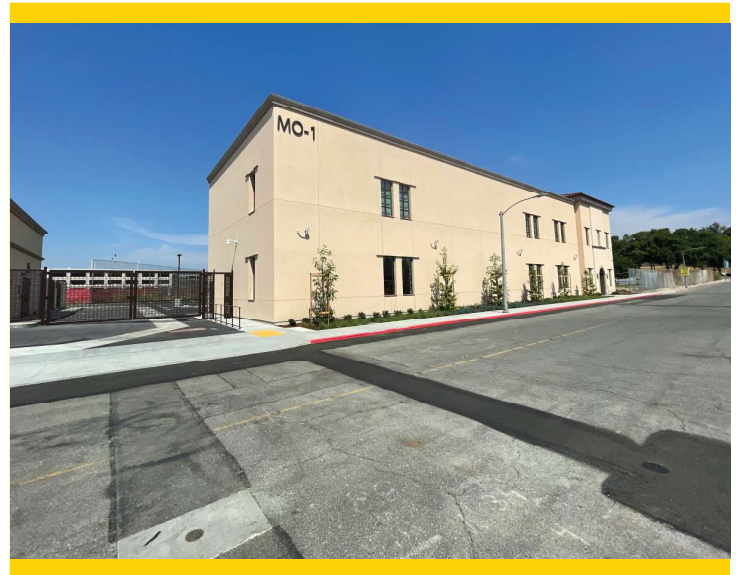
Allowance Status					
	In Contract	Approved		Balance	
Allowances	\$2,879,550	\$2,878,079	100%	\$1,471	0%



# PROJECT STATUS REPORT — FULLERTON CAMPUS

## NEW MAINTENANCE & OPERATION BUILDING CLOSE-OUT

<b>Project Manager</b>	Jon Erickson Project Manager Campus Capital Projects
<b>Architect of Record</b>	BN Builders, Inc. & Roesling Nakamura Terada Architect, Inc.
<b>General Contractor</b>	BN Builders, Inc.
<b>Project Delivery Method</b>	Progressive Design-Build
<b>Project Square Footage</b>	14,723 GSF
<b>DSA Application A#</b>	04-121528



### Project Overview

The New Maintenance and Operations (M&O) Building will centralize all services into a single building located on the Main Campus. The building will include trade-specific workshops for maintenance, grounds, facilities, and custodial personnel while improving response time and efficiencies by locating the building on the Main Campus adjacent to the central plant.

### Budget & Construction Costs

- Total Project Budget.....\$19,566,654
- Funding Source.....Measure J, Local
- Measure J.....\$6,399,604
- Local Funds.....\$13,167,050

### Schedule

- Construction Start.....October 2023
- Construction Completion.....May 2025

Allowance Status					
	In Contract	Approved		Balance	
Allowances	\$501,866	\$501,866	100%	\$0	0%
Contingency	\$318,882	\$318,882	100%	\$0	0%

# PROJECT STATUS REPORT — FULLERTON CAMPUS

## STUDENT SUPPORT CENTER CLOSE-OUT

<b>Project Manager</b>	Jon Erickson Project Manager Campus Capital Projects BN Builders, Inc. & Roesling Nakamura Terada Architects, Inc.
<b>Architect of Record</b>	BN Builders, Inc.
<b>General Contractor</b>	Progressive Design-Build Method
<b>Project Delivery Method</b>	23,192 GSF
<b>Project Square Footage</b>	04-121527
<b>DSA Application A#</b>	



### Project Overview

Located at the intersections of Chapman Avenue and Newell Street, the project formerly known as the Chapman/Newell Instructional Building, will be home to an array of student services vital to their success, including the Campus Veterans’ Resource Center, Student Wellness Center (both medical and behavioral health), the Campus Food Bank, Extended Opportunity Programs and Services (EOPS), CalWORKS, Cooperative Agencies Resources for Education (CARE)/Foster Youth Success Initiative (FYSI), a Multi-Cultural Center, and 2 instructional classrooms. Support functions will be available with community storage, a department-wide copy and break-room, and a lactation room.

### Budget & Construction Costs

- Total Project Budget.....\$28,582,754
- Funding Source.....Measure J, Local
- Measure J.....\$26,902,917
- Local Funds.....\$1,679,837

### Schedule

- Construction Start.....October 2023
- Construction Completion.....June 2025

Allowance Status					
	In Contract	Approved		Balance	
Allowances	\$679,500	\$679,085	99%	\$415	0%
Contingency	\$559,496	\$559,496	100%	\$0	0%

# PROJECT STATUS REPORT — FULLERTON CAMPUS

## NEW PERFORMING ARTS COMPLEX - DEMOLISH BUILDINGS 1100 & 1300 CONSTRUCTION

<b>Project Manager</b>	<b>Jon Erickson</b> Project Manager Campus Capital Projects
<b>Construction Manager</b>	<b>Kitchell/CEM, Inc.</b>
<b>Architect of Record</b>	<b>Perkins Eastman Architects</b>
<b>General Contractor</b>	<b>SJ Amoroso Co., LLC</b>
<b>Project Delivery Method</b>	<b>Design-Bid-Build</b>
<b>Project Square Footage</b>	<b>77,560 GSF</b>
<b>DSA Application A#</b>	<b>04-121681</b>



### Project Overview

This project addresses the demand for enrollment in the Performing Arts programs by constructing a new complex that will combine music, drama, theater arts, and communication programs into a single facility. The new building will replace outdated facilities with electrical deficiencies and outmoded configurations. The new structure will take advantage of the potential use of commonly required spaces to improve overall utilization and flexible spaces that help programs in meeting higher demands anticipated in the near future.

### Budget & Construction Costs

- Total Project Budget.....\$135,956,025
- Funding Source.....Measure J, State, Local
- Measure J.....\$92,005,166
- State Capital Outlay.....\$43,787,000
- Local Funds.....\$163,859

### Schedule

- Construction Start.....May 2025
- Targeted Construction Completion.....Spring 2028

Allowance Status					
	In Contract	Approved		Balance	
Allowances	\$7,700,000	\$1,933,725	25.11%	\$5,766,275	75%



# PROJECT STATUS REPORT — FULLERTON CAMPUS

## WILSHIRE CHILLER PLANT RELOCATION CLOSE-OUT

<b>Project Manager</b>	<b>Aaron Choi</b> Project Manager MAAS Companies, Inc.
<b>Architect of Record</b>	<b>Perkins Eastman Architects</b>
<b>General Contractor</b>	<b>Plumbing, Piping &amp; Construction, Inc.</b>
<b>Project Delivery Method</b>	<b>Design-Bid-Build</b>
<b>Project Square Footage</b>	<b>2,175 GSF</b>
<b>DSA Application A#</b>	<b>04-121682</b>



### Project Overview

Considered the first phase of the New Performing Arts Complex project, the Wilshire Chiller Plant will be relocated adjacent to its original location to accommodate the future construction of the New Performing Arts Complex in its original building footprint. The facilities deliver temperature control to the buildings in its vicinity, including the Wilshire Center. The new facility will provide the same service to the current buildings in addition to the new Performing Arts Complex. The relocation of the infrastructure will be carried out in coordination with the local utility, Southern California Edison (SCE). Following DSA approval of Increment 1, a revised estimate of probable cost of construction now accounts for current market conditions and material prices.

### Budget & Construction Costs

- Total Project Budget.....\$16,487,409
- Funding Source.....Measure J

### Schedule

- Construction Start.....May 2024
- Targeted Construction Completion....March 2026

Allowance Status					
	In Contract	Approved		Balance	
Allowances	\$840,010	\$674,135	80.25%	\$165,875	1%

# PROJECT STATUS REPORT — FULLERTON CAMPUS

## NEW HORTICULTURE/LAB SCHOOL/STEM LAB CCCCO REVIEW

<b>Project Manager</b>	<b>Joel Gonzalez</b> Project Manager Campus Capital Projects
<b>Architect of Record</b>	<b>Gensler</b>
<b>General Contractor</b>	<b>TBD</b>
<b>Project Delivery Method</b>	<b>Design-Build</b>
<b>Project Square Footage</b>	<b>Approximately 40,000 GSF</b>
<b>DSA Application A#</b>	<b>TBD</b>



### Project Overview

Consolidate all STEM programs into a two-floor building that will include updated laboratories and associated infrastructure, greenhouse spaces, tailored classrooms, tutoring spaces, and Americans with Disabilities Act (ADA) improvements.

### Budget & Construction Costs

- Total Project Budget.....\$52,663,636
- Funding Source.....Measure J, State
- Measure J.....\$25,167,636
- State Capital Outlay.....\$27,496,000
- Construction Start.....Winter 2027
- Targeted Completion.....Fall 2029



# PROJECT STATUS REPORT — FULLERTON CAMPUS

## SOFTBALL FIELD IMPROVEMENTS BIDDING

<b>Project Manager</b>	Joel Gonzalez Project Manager Campus Capital Projects
<b>Architect of Record</b>	Westberg + White
<b>General Contractor</b>	TBD
<b>Project Delivery Method</b>	Design-Bid-Build
<b>Project Square Footage</b>	Approximately 16,863 GSF
<b>DSA Application A#</b>	TBD



### Project Overview

This project intends to address deficiencies to the existing facilities and associated infrastructure for the campus athletics department.

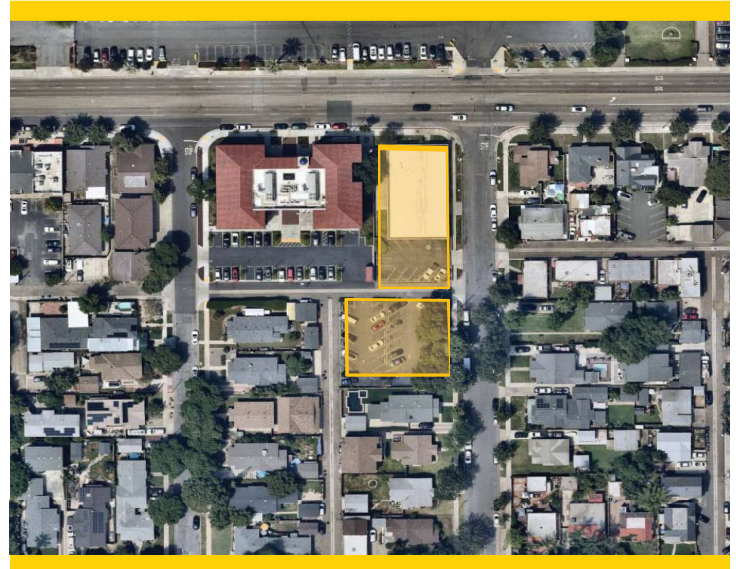
### Budget & Construction Costs

- Total Project Budget (Est.).....\$7,000,000
- Funding Source.....Measure J
- Construction Start.....Fall 2026
- Targeted Construction Completion.....Spring 2027

# PROJECT STATUS REPORT — FULLERTON CAMPUS

## CHAPMAN AVENUE SITE ACQUISITION PURCHASE EXECUTED

Project Manager	John Erickson Project Manager Campus Capital Projects
Architect of Record	N/A
General Contractor	N/A
Project Delivery Method	N/A
Project Square Footage	Approximately 13,936 GSF
DSA Application A#	N/A



### Project Overview

In coordination with Fullerton College, the District purchased two land parcels, 446 East Chapman Avenue, and 319 North Balcom Avenue, adjacent to the Student Support Center for use as an upgrade to parking facilities for buildings south of Chapman Avenue. Upcoming master plan updates will potentially involve the utilization of this space for instruction as additional parking solutions are developed on campus.

### Budget & Construction Costs

- Total Project Budget (Est.).....\$2,201,655
- Funding Source.....Measure J
- Measure J .....\$2,201,655



# PROJECT STATUS REPORT — FULLERTON CAMPUS

## UPDATE/IMPROVE INFRASTRUCTURE

### VARIOUS STAGES

Address	321 Chapman Avenue Fullerton College, CA 92832	Total Project Budget	\$19,075,188 (Measure J)
		Total Budget Allocated	\$8,294,702 (Measure J)
Number of Projects	4	Funding Source	Measure J & Capital Outlay

### General Overview

The projects will address infrastructure improvements or upgrades throughout the Campus. Funds are allocated to projects as needs are identified.



# PROJECT STATUS REPORT — FULLERTON CAMPUS

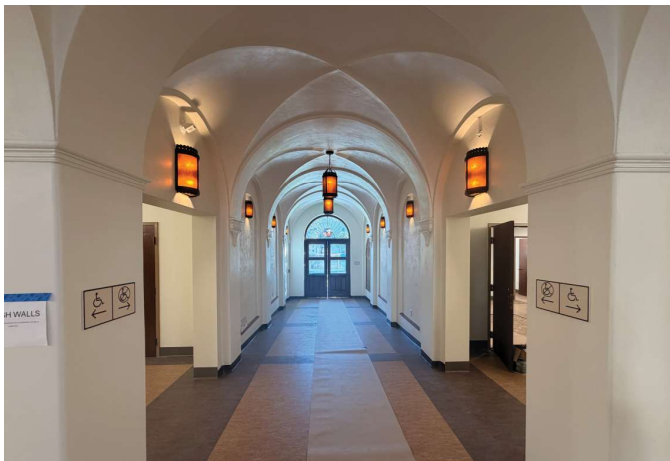
## Renovate Building 300

- The project is nearing final completion, with the Campus Project Team finalizing the remaining punch-list items including interior door and fire alarm hardware installation and programming. The fire alarm devices were connected to the main campus power loop prior to programming.
- Work on specialty and Furniture Fixtures and Equipment (FF&E) items are being addressed, including the placement of door card readers, electrified door hardware to facilitate building access control. Glass panels are pending delivery and installation at the reception areas; this work is expected to be completed in early June.
- The Campus Project Team and King Van Moving Services met in late April to coordinate moving activities for the return of all faculty, staff, and administrators to the building. Building occupancy is anticipated to be achieved in fall 2026.



Renovate Building 300  
Completed Office Space

- The Campus Project Team is working with MAAS Companies, Inc. to finalize project savings. The remaining state contingency funds will be returned to the state, while unused Measure J funds will be allocated back to the campus for use in future projects. A Board Agenda Item has been prepared for presentation of the Notice of Completion and deductive change order to the Board of Trustees at the second meeting in May. Fullerton College is planning to hold a ribbon-cutting ceremony in October to celebrate the opening of the building.



Renovate Building 300  
Completed Historic Renovation

## New Maintenance & Operations Building and Student Support Center

- Amendment No. 3 comprising of Change Order Nos. 2 and 3, was presented to the Board of Trustees along with a Notice of Completion in late March. The Design Builder, BN Builders, is addressing the remaining final items, including an uninterrupted power supply required by the DSA Field Engineer to enable emergency power



# PROJECT STATUS REPORT — FULLERTON CAMPUS



New Maintenance & Operations  
Completed Project

for the continued use of the building's automated doors during an electrical outage.

- The items were ordered and installed in the last week of April. The projects will be reviewed by the Inspector of Record and signed off if the projects meet the requirements of completion. DSA certification is expected to be achieved upon the conclusion of Inspector of Record review, marking the conclusion of the projects.

## New Welcome Center & Lot C West

- Last year, the District, on behalf of Fullerton Leadership, submitted the New Welcome Center and Lot C West initial project proposal (IPP) to the California Community Colleges Chancellor's Office (CCCCO) for its consideration. While the project achieved IPP on March 9, revisions are required to meet the state's threshold for office spaces prior to submitting the final project proposal to the State Chancellor's Office in FY 2026-27.
- The District has met with consultant, Suniya Architects, to make the recommended adjustments. A meeting is planned between the District, Fullerton Leadership, and the Campus Project Team prior to submitting the FPP application in the next fiscal year. A meeting is planned between the Campus Project Team, Fullerton Leadership, and the District for agreement on this modification.

## New Performing Arts Complex

- Since the previous reporting cycle, the project has made significant progress. At the West Building, first-level concrete masonry unit (CMU) work was achieved consisting of six lifts, marking a key milestone. The recital hall achieved top-out at the sixth lift in early May, signifying the placement of a structural beam at the highest point of the building.
- Removal of temporary bracing and scaffolding ensued as the structure comes together. Structural steel deliveries took place in mid-March to support steel erection that began in the third week of March. By early April, all primary structural steel, including main girders and framing columns, were in place. Welding activities continued into mid-April, with



New Performing Arts Complex  
Steel Structure and CMU Walls in West Building  
Recital Hall



# PROJECT STATUS REPORT — FULLERTON CAMPUS

decking installation following. In May, reinforcement bar installation, formwork, and concrete pours for the second floor structure began. Second level structural activities approached completion in late April as the Recital Hall achieved top-out, or the placement of structural beams at the highest point of the hall. CMU work then resumed with the start of the first lift on the second level; activities are anticipated to continue into mid-June.

- Recital hall roof framing started at the end of May and is expected to conclude in July. Meanwhile, roof framing for the west building will follow the conclusion of the placement of CMU and structural steel with a start date aimed at late June.
- At the orchestra pit, waterproofing of the concrete walls on the south side of the theater lab began in late March, at the same time the final pile caps and grade beams were set in place. Upon the conclusion of foundation activities, concrete masonry installation resumed shortly after. Grouting and CMU work are expected to extend through mid-May.
- Initial underground electrical work followed installation of wall formwork in April. Following its conclusion, slab on grade foundation work and CMU wall work proceeded. Additional mechanical, electrical, and plumbing (MEP) work for plumbing and electrical began following the completion of this portion of the wall placement.
- Small piles were set in place to allow for shoring activities to hold soil for the duration of basement excavation. Activities continued for approximately two weeks including soil removal and grading of the basement area before transitioning to foundation preparation.



New Performing Arts Complex  
30,000-Gallon Tank Testing and Removal



New Performing Arts Complex  
Preparations for Cast-In-Drill Hole Upcoming in mid-May

- In April, crews encountered an unforeseen condition in the form of a 30,000-gallon tank in the vicinity of the basement area. Hazardous materials testing took place with no findings for the tank and soil in the surrounding area; as such, no further abatement protocols were required and the tank was promptly removed.
- With the soil clean of contaminants, crews resumed soil work activities with grading and removal on that portion of the site; the excess soil was later used for backfilling near the orchestra pit and for the construction of a temporary access ramp for equipment. Major foundation work is scheduled to begin in mid-to-late May in the basement area involving cast-in-drill-hole



# PROJECT STATUS REPORT — FULLERTON CAMPUS

activities followed by grade beam and pile cap excavation.

- CMU wall erection began in May after site and earthwork were completed. Rough grading progressed at the Auditorium and East Classroom Building areas to enable the mobilization of upcoming caisson drilling in late May, setting the stage for structural foundation activities in June.
- The construction project management team continued addressing deferred submittals of long lead and specialty systems, including production rigging, orchestra shell, tension grid, elevator guide rails, and glass fiber reinforced concrete (GFRC), or exterior panels to form the building façade. The finalized deferred submittals were presented to DSA for its review and approval to meet future milestones.

## Wilshire Chiller Plant Relocation

- On March 2, the project achieved substantial completion after addressing most punch-list items by March 9 except for the uninterrupted power supply (UPS). General contractor, PPC, is addressing the installation of the UPS to ensure functionality for automated doors during power outages. A Board Agenda Item for a Notice of Completion and deductive change order is anticipated to be presented to the Board of Trustees on June 9. The completed plant is now functional and providing cooling to the surrounding buildings.



Wilshire Chiller Plant Relocation  
Completed Site

## New Horticulture/Lab School/STEM Lab

- Architect of Record, Gensler, with input from the Building User Group, developed the final preliminary plans package, consisting of an exploratory design including broad sketches of spaces, logistics, and site plans.
- However, the Campus Project Team, Fullerton Leadership, and District are addressing a potential difference in the plausible cost of construction and the allotted budget available. The Team is engaging with the AOR to explore scope of work revisions to resolve the gap prior to proceeding with a review by the State Chancellor's Office.
- Conversations are underway with the state to determine next steps for the preliminary plan process. The State Chancellor's Office will then initiate its review of the document for design conformity. If the package is acceptable, the project will be greenlit to proceed forward to the Department of Finance for additional review and potential dispensation of funding for the next phase of design. Upon receiving authorization to proceed, the working drawings are expected to start in the second half of 2026. This phase will involve refining the design into a buildable project with an eye on the required materials, systems, and layouts as well as the final blueprint for DSA consideration.
- The Campus Project Team and Design Team are conducting meetings with the Building User Group and Department



# PROJECT STATUS REPORT — FULLERTON CAMPUS

Dean to identify swing space needs and the feasibility of existing options to fulfill department and campus requirements for the duration of construction. Additional conversations are taking place with the Vice President of Instruction to assess site adjustments to potential swing space locations to support this goal. The continuation of this process is predicated on the resolution of the budget gap described above.

- A Board Agenda Item was approved for Amendment No. 1, to increase the contract of Architect of Record, Gensler, for the duration of the design phase based on the latest project estimate. Gensler's contract has been amended to increase by an associated eight percent architect and engineering fee. The amendment was subsequently executed by the District.

## Softball Field Improvements

- In early March, the Campus Project Team submitted the soils report to the California Geological Survey (CGS) as part of DSA requirements for final Construction Documents' approval. After a period of review, CGS provided its agreement with the report on April 22; a notification was sent to the Campus Project Team by letter. DSA then provided its final stamp of approval to the Construction Documents on April 23.
- The project is now able to proceed with the bidding phase for general contractor selection. The bid documents are anticipated to be finalized and released by electronic portal on PlanetBids in mid-May. Interested firms will be invited to attend a mandatory job walk and participate in the requests for information process. Once all bids are received, by the stated deadline, the responsive, responsible, and lowest cost general contractor will be selected to carry out construction on the project. The Campus Project Team will then present a Board Agenda Item to the Board of Trustees for its consideration in late August.
- Fullerton Leadership is actively solidifying an alternative venue for the women's softball team to host their 2026-27 season games before the start of construction in early September.

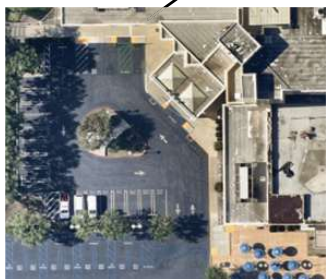
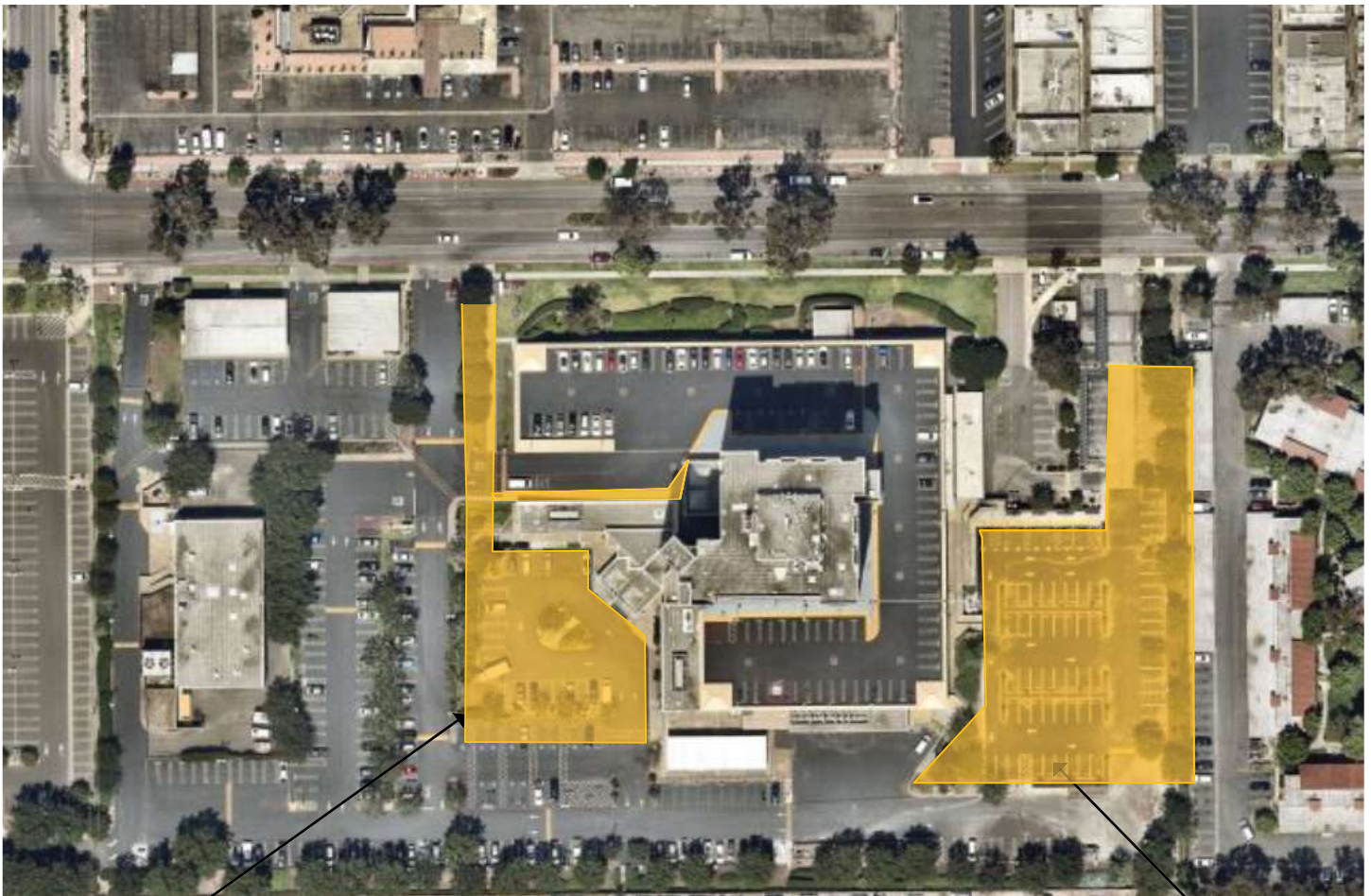
## Chapman Avenue Site Acquisition

- In coordination with Fullerton College, the District purchased two land parcels, consisting of 446 East Chapman Avenue, and 319 North Balcom Avenue, adjacent to the Student Support Center for use as an upgrade to parking facilities for buildings south of Chapman Avenue. Upcoming master plan updates will potentially involve the utilization of this space for instruction as additional parking solutions are developed on campus.



# AERIAL VIEW — ANAHEIM CAMPUS PROJECTS

1830 W. Romney Drive, Anaheim, CA 92801



Exterior Green Community  
Space Enhancement  
[Bidding]



Develop Interior and  
Exterior Signage  
[Exterior Signage: Close-  
Out; Interior Signage:  
Implementation]



Restore East Parking Lot  
[Close-Out]



# PROJECT STATUS REPORT — ANAHEIM CAMPUS

## DEVELOP INTERIOR AND EXTERIOR SIGNAGE

EXTERIOR: CLOSE-OUT; INTERIOR: IMPLEMENTATION

<b>Project Manager</b>	<b>Cora Baldovino Project Manager Facilities, Planning, Maintenance and Construction Contracts</b>
<b>Architect of Record</b>	<b>Westberg White</b>
<b>Specialty Contractor</b>	<b>KYA Group, Inc.</b>
<b>Project Delivery Method</b>	<b>Design-Bid-Build</b>
<b>Project Square Footage</b>	<b>N/A</b>
<b>DSA Application A#</b>	<b>04-121174</b>



### Project Overview

New exterior signage will be installed to add directional and wayfinding signage facilitate access to all areas of the campus. Interior scope of work is anticipated to included directional signage next to elevators at each floor.

### Budget & Construction Costs

- Total Project Budget.....\$2,796,431
- Funding Source.....Measure J, Local
- Measure J.....\$2,737,431
- Local.....\$59,000

### Schedule:

- Construction Start.....August 2023
- Targeted Construction Completion.....Fall 2026



# PROJECT STATUS REPORT — ANAHEIM CAMPUS

## RESTORE EAST PARKING LOT CONSTRUCTION

<b>Project Manager</b>	<b>Cora Baldovino Project Manager Facilities, Planning, Maintenance and Construction Contracts</b>
<b>Architect of Record</b>	<b>PBK Architects</b>
<b>Specialty Contractor</b>	<b>TBD</b>
<b>Project Delivery Method</b>	<b>Design-Bid-Build</b>
<b>Project Square Footage</b>	<b>Approximately 19,384 SF</b>
<b>DSA Application A#</b>	<b>04-124664</b>



### Project Overview

This project will restore the East Parking Lot to its original use after dismantling the temporary classrooms that were in operation for the duration of the Anaheim Tower First Floor/Life Safety Renovation project.

### Budget & Construction Costs

- Total Project Budget.....\$2,521,574
- Funding Source.....Measure J

### Schedule

- Construction Start.....January 2026
- Targeted Construction Completion.....April 2026

Allowance Status						
	In Contract		Approved		Balance	
Allowances	\$150,000	\$27,896	19%	\$122,104	81%	

# PROJECT STATUS REPORT — ANAHEIM CAMPUS

## EXTERIOR GREEN COMMUNITY SPACE ENHANCEMENT BIDDING

<b>Project Manager</b>	<b>Aaron Choi Project Manager MAAS Companies, Inc.</b>
<b>Architect of Record</b>	<b>PBK Architects</b>
<b>Specialty Contractor</b>	<b>TBD</b>
<b>Project Delivery Method</b>	<b>Design-Bid-Build</b>
<b>Project Square Footage</b>	<b>Approximately 26,000 SF</b>
<b>DSA Application A#</b>	<b>04-124675</b>



### Project Overview

This green-space will foster social gatherings in a grand quad with amphitheater seating for special events like commencement. Americans with Disabilities Act (ADA) improvements are included in the project scope of work for accessibility of all users.

### Budget & Construction Costs

- Total Project Budget.....\$5,967,463
- Funding Source.....Measure J & Local
- Measure J.....\$2,967,926
- Local.....\$2,999,537

### Schedule

- Construction Start.....July 2026
- Targeted Construction Completion....Spring 2027



# PROJECT STATUS REPORT — ANAHEIM CAMPUS

## UPDATE/IMPROVE INFRASTRUCTURE

### VARIOUS STAGES

Address	1830 W. Romneya Dr. Anaheim, CA 92801	Total Project Budget	\$1,766,540 (Measure J)
		Total Budget Allocated	\$1,541,602 (Measure J)
Number of Projects	3	Funding Source	Measure J & Capital Outlay

### General Overview

The projects will address infrastructure improvements or upgrades throughout the Campus. Funds are allocated to projects as needs are identified.



# PROJECT STATUS REPORT — ANAHEIM CAMPUS

## Develop Interior and Exterior Signage

- The project is undergoing close-out for the exterior portion of the scope of work, having achieved substantial completion in late April. Minor items are being addressed. Once resolved, a Notice of Completion is expected to be presented to the Board of Trustees in the coming months for its consideration. Once approved, the District will submit the Notice of Completion to the Orange County Registrar, triggering the 30-day count for release of retention for this portion of the project.

- Signage coordinator, KYA Group, provided the Campus Project Team with the revised interior scope of work after taking steps to minimize expenses and meet the established budget at approximately \$729K. The revised scope of work includes the addition of building and floor directories at the entrances, lobbies, and corridors along with wayfinding signage and artwork along the hallways.



Develop Interior And Exterior Signage  
Completed Exterior Signage

- A Board Agenda Item is anticipated to be presented to the Board of Trustees in June to KYA Group for the implementation of the finalized interior scope of work prior to proceeding with fabrication and installation.



Restore East Parking Lot  
Completed Parking Lot

## Restore East Parking Lot

- Since February, crews poured concrete curbs and resolved the electrical work to provide power for lighting poles upon their installation. After completing form-work for the light pole foundations, the parking area was leveled, and an aggregate rock base was set before asphalt paving took place at the end of March. Temporary markings outlined the future parking spaces on the cured asphalt, with final striping planned after the application of sealant to the site in the coming months.
- Minor repairs including irrigation line repairs and electrical panel work for EV chargers were addressed. Truncated domes and signs were installed, and bench-



# PROJECT STATUS REPORT — ANAHEIM CAMPUS



Exterior Green Community Space Enhancement  
Design Rendering

es were placed around the site. The electrical charging stations and other finishing tasks are scheduled once the items arrive. The project achieved substantial completion on April 10, and financial and document close-out is now underway. A Board Agenda Item for a Notice of Completion is planned to be presented to the Board of Trustees in the coming weeks once all work concludes and project close-out is achieved.

## Exterior Green Community Space Enhancement

- The project is currently proceeding through the bidding phase. Following review of the original bid process and consultation with District legal counsel, the District determined that additional clarification regarding project phasing and sequencing should be incorporated into the bid documents to provide clearer direction to bidders. As

a result, a request to cancel the bids was submitted to the Board of Trustees for consideration on May 26. With the Board's approval, the revised bid documents will be issued to the pre-qualified bidders in early June.

- An optional site walk is scheduled to take place with bids due approximately two weeks thereafter. Following review and final determination, a Board Agenda Item will be presented to the Board of Trustees with the recommended general contractor at the meeting in July. The project is anticipated to issue a Notice to Proceed with construction to the selected firm in early August 2026.

# Completed Projects

## Campus Projects

- Cypress
- Fullerton
- Anaheim and District Offices



# COMPLETED PROJECTS

## Cypress Campus



For additional information on completed projects, please scan the QR code to the right to visit the NOCCCD Bond website. Information available for each project will vary due to the nature of the project's scope of work.

Project Name	Funding Sources	Final Project Cost	Completion Date
Swing Space Projects - Gym II Improvements	Measure J	\$124,683	July 2018
Swing Space Projects - Parking Lot 5 Realignment	Measure J	\$2,001,369	September 2018
Mass Communications & Security Systems Upgrade: Safety Film	Measure J	\$145,772	January 2019
Mass Communications & Security Systems Upgrade: Door Replacement	Measure J	\$50,898	January 2019
Update / Improve Infrastructure: Central Plant Upgrades	Measure J	\$58,768	October 2020
Baseball Field Improvements	Measure J Local	\$1,920,904 \$159,467	May 2021
New Science, Engineering, and Mathematics Building	Measure J Local Federal Scheduled Maint.	\$92,011,543 \$3,840,633 \$791,352 \$49,281	September 2021
Update / Improve Infrastructure (New SEM)	Measure J	\$2,805,131	September 2021
Update / Improve Infrastructure (IT-New SEM)	Measure J	\$645,883	September 2021
Mass Communications & Security Systems Upgrade (New SEM)	Measure J	\$389,367	September 2021
New Veterans' Resource Center / Student Activities Center Expansion	Measure J Local	\$12,071,766 \$89,764	July 2021
Update / Improve Infrastructure: Central Plant Upgrades	Measure J	\$1,077,912	July 2021
Update / Improve Infrastructure (VRC/SAC)	Measure J	\$181,761	July 2021
Mass Communications & Security Systems Upgrade (VRC/SAC)	Measure J	\$60,938	July 2021



# COMPLETED PROJECTS

## Cypress Campus (continued)



For additional information on completed projects, please scan the QR code to the right to visit the NOCCCD Bond website. Information available for each project will vary due to the nature of the project's scope of work.

Project Name	Funding Sources	Final Project Cost	Completion Date
Veterans' Memorial Bridge, Plaza, and Tribute Garden	Local	\$1,365,397	July 2021
Pond Refurbishment	Local	\$623,873	July 2021
Swing Space - Fine Arts (OLD SEM)	Measure J	\$3,748,140	June 2023
LLRC Secondary Data Center Phase II	Measure J	\$473,716	August 2023
Campus-Wide Security Systems Update (Phase I)	Measure J	\$313,541	August 2023
Update/Improve Infrastructure (IT)	Measure J Local	\$3,421,310 \$780,256	May 2024
Electrical Vehicles (EV) SCE Charging Stations-Lot 4	Measure J	\$337,894	October 2024



# COMPLETED PROJECTS

## Fullerton Campus

For additional information on completed projects, please scan the QR code to the right to visit the NOCCCD Bond website. Information available for each project will vary due to the nature of the scope of work.



Project Name	Funding Sources	Final Project Cost	Completion Date
Update and Improve Infrastructure / Buildings 300 -500 Sewer Line	Measure J Scheduled Maint.	\$444,702 \$85,559	July 2020
Greenhouse Replacement	Measure J Local	\$398,664 \$989,272	August 2021
Central Plant Replacement & Expansion	Measure J	\$9,004,296	September 2021
New Instructional Building	Measure J Local	\$50,115,010 \$828,489	March 2022
Update/Improve Infrastructure (IT-New Instructional Building)	Measure J	\$278,982	March 2022
Swing Space - New M&O	Measure J	\$150,000	November 2023
Update/Improve Infrastructure (IT)	Measure J Local	\$7,571,018 \$4,308,585	May 2024



# COMPLETED PROJECTS

## NOCE—Anaheim Campus & District Offices

For additional information on completed projects, please scan the QR code to the right to visit the NOCCCD Bond website. Information available for each project will vary due to the nature of the scope of work.



Project Name	Funding Sources	Final Project Cost	Completion Date
5th Floor CTE Laboratory and 2nd Floor Room 215	Measure J	\$640,736	September 2018
7th and 10th Floors Buildout	Measure J Measure X	\$915,972 \$4,285,592	June 2019
Secondary MDF Room	Measure J	\$97,250	March 2021
Swing Space – Interim Housing	Measure J Local	\$1,650,000 \$1,931,335	December 2023
Outdoor Patio Remodel	Measure J	\$1,182,500	August 2025
Update/Improve Infrastructure Swing Space – Interim Housing	Measure J	\$669,290	November 2023
Update/Improve Infrastructure (IT)	Measure J Local	\$775,062 \$4,896,073	November 2023
Update/Improve Infrastructure (IT) AEBG & AZ	Local	\$199,706	May 2024
Swing Space—Hotel, Restaurant, and Culinary Arts	Measure J Local	\$2,500,000 \$1,300,000	July 2024
Anaheim Tower First Floor Life/Safety Renovation	Measure J State Local	\$2,510,440 \$7,059,000 \$647,189	December 2024



## Financial Review

- Capital Projects Update
- Fullerton
- 90-Day Look Ahead Schedule

**NOCE**  
**NORTH ORANGE**  
CONTINUING EDUCATION  
ANAHEIM CAMPUS

**CYPRESS BISTRO**  
CYPRESS COLLEGE HOTEL RESTAURANT  
CULINARY ARTS



# ESTIMATED PROJECT BUDGETS

**North Orange County Community College District  
Measure J  
Capital Projects Update  
As of April 30, 2026**

**Bond Authorization:**

Bond Authorization	574,000,000	100.00%
Bonds Sold - Series A + B + C	400,000,000	69.69%
<b>Available Principal Amount of Bonds</b>	<b>174,000,000</b>	<b>30.31%</b>

**Bond Funding Sources (Budget):**

		Actual Received	Remaining Balance
Bond Authorization	574,000,000	400,000,000	174,000,000
Estimated Interest Earnings*:	34,879,677	34,799,147	80,530
<b>Total Estimated:</b>	<b>608,879,677</b>	<b>434,799,147</b>	<b>174,080,530</b>
Less Cost of Interest	800,000	636,828	163,172
<b>Total Available for allocation:</b>	<b>608,079,677</b>	<b>434,162,319</b>	<b>173,917,358</b>

**Cost Status:**

Campus	Total Budget	%	Actual Expenses to Date	Remaining Balance
Anaheim Campus	23,800,144	3.91%	12,121,916	11,678,229
Cypress Campus	233,473,906	38.40%	165,186,953	68,286,953
Fullerton Campus	325,978,403	53.61%	138,100,206	187,878,197
District Expenses				
• Program Management	20,000,000	3.29%	13,501,275	6,498,725
• Bond Issuance Cost	3,544,600	0.58%	2,048,689	1,495,911
• Holding Account	1,282,624	0.21%	-	1,282,624
<b>Totals</b>	<b>608,079,677</b>	<b>100.00%</b>	<b>330,959,039</b>	<b>277,120,638</b>

\* Estimated Interest Earnings are increased by \$379,677 for April FY 25-26



# ESTIMATED PROJECT BUDGETS

## Cypress Campus

### CURRENT PROJECTS

### PROJECT BUDGET/VARIANCE REPORT—CYPRESS

CURRENT PROJECTS	Measure J Budget JAN FY 2025-26		Measure J Budget APR FY 2025-26		Variance	Measure J Expenses APR FY 2025-26		Balance
Fine Arts Building Renovation	\$ 56,400,871		\$ 56,400,871	\$ -	\$ -	\$ 42,182,243	\$ 14,218,627	
Softball Field Renovations	\$ 4,000,000		\$ 4,000,000	\$ -	\$ -	\$ 280,788	\$ 3,719,212	
LLRC Exterior Patio	\$ 1,900,000		\$ 1,900,000	\$ -	\$ -	\$ 91,080	\$ 1,808,920	
Central Plant Upgrade	\$ 4,000,000		\$ 4,000,000	\$ -	\$ -	\$ 5,500	\$ 3,994,500	
SEM (FASS) Bldg. 3 Demolition and Site Restoration	\$ 11,123,000		\$ 11,123,000	\$ -	\$ -	\$ -	\$ 11,123,000	
Health Sciences Tech Ed III Renovation	\$ 26,126,990		\$ 26,126,990	\$ -	\$ -	\$ -	\$ 26,126,990	
Planning (Non Project Specific)	\$ 8,005,283		\$ 8,005,283	\$ -	\$ -	\$ 709,580	\$ 7,295,703	
<b>COMPLETED PROJECTS</b>								
Swing Space Fine Arts (Old SEM)	\$ 3,748,140		\$ 3,748,140	\$ -	\$ -	\$ 3,748,140	\$ -	
Update/improve Infrastructure (IT)	\$ 3,421,310		\$ 3,421,310	\$ -	\$ -	\$ 3,421,310	\$ -	
New Science, Engineering, and Mathematics Building	92,011,543		92,011,543	-	-	92,011,543	-	
Update/improve Infrastructure (New SEM)	\$ 2,805,131		\$ 2,805,131	\$ -	\$ -	\$ 2,805,131	\$ -	
Mass Communications & Security Systems Upgrade (New SEM)	\$ 389,367		\$ 389,367	\$ -	\$ -	\$ 389,367	\$ -	
Update/Improve Infrastructure (IT - New SEM)	\$ 645,883		\$ 645,883	\$ -	\$ -	\$ 645,883	\$ -	
New Veterans' Resource Center & Student Activities Center Expansion	\$ 12,071,766		\$ 12,071,766	\$ -	\$ -	\$ 12,071,766	\$ -	
Update/Improve Infrastructure (VRC/SAC)	\$ 1,077,912		\$ 1,077,912	\$ -	\$ -	\$ 1,077,912	\$ -	
Mass Communications & Security Systems Upgrade (VRC/SAC)	\$ 60,938		\$ 60,938	\$ -	\$ -	\$ 60,938	\$ -	
Update/Improve Infrastructure (IT - VRC/SAC)	\$ 181,761		\$ 181,761	\$ -	\$ -	\$ 181,761	\$ -	
Baseball Field Improvements	\$ 1,920,904		\$ 1,920,904	\$ -	\$ -	\$ 1,920,904	\$ -	
Update/Improve Infrastructure (Central Plant Enhancements)	\$ 58,768		\$ 58,768	\$ -	\$ -	\$ 58,768	\$ -	
Swing Space - Parking Lot 5 Expansion	\$ 2,001,369		\$ 2,001,369	\$ -	\$ -	\$ 2,001,369	\$ -	
Swing Space - Gym II Renovation	\$ 124,683		\$ 124,683	\$ -	\$ -	\$ 124,683	\$ -	
Swing Space - Old SEM (Roofing)	\$ 76,467		\$ 76,467	\$ -	\$ -	\$ 76,467	\$ -	
Mass Communications & Security Systems Upgrade (Safety Film)	\$ 145,772		\$ 145,772	\$ -	\$ -	\$ 145,772	\$ -	
Mass Communications & Security Systems Upgrade (Door Replacement)	\$ 50,898		\$ 50,898	\$ -	\$ -	\$ 50,898	\$ -	
LLRC Secondary Data center - Phase II	\$ 473,716		\$ 473,716	\$ -	\$ -	\$ 473,716	\$ -	
Campus-Wide Security Systems Upgrade (Phase 1)	\$ 313,541		\$ 313,541	\$ -	\$ -	\$ 313,541	\$ -	
EV SCE Charging Stations	\$ 337,894		\$ 337,894	\$ -	\$ -	\$ 337,894	\$ -	
<b>SUB TOTAL</b>	<b>\$ 233,473,906</b>		<b>\$ 233,473,906</b>	<b>\$ -</b>	<b>\$ -</b>	<b>\$ 165,186,953</b>	<b>\$ 68,286,953</b>	



## ENCUMBRANCES OVER \$10,000

### Cypress Campus - New Encumbrances (February - April 2026)

Project	Vendor	Purchase Order No.	Purchase Order Amount	Scope of Work
Fine Arts Building Renovation	Sidepath, Inc.	P0180538	\$12,433.09	FF&E Services for Computers Units
Fine Arts Building Renovation	CDW Government, Inc.	P0180523	\$73,214.21	FF&E Services for Computer Units
Fine Arts Building Renovation	B&H Photo Video, Inc.	P0180783	\$294,709.89	FF&E Equipment
Fine Arts Building Renovation	McMurray Stern, Inc.	P0181138	\$116,549.05	FF&E Shelving Units
Fine Arts Building Renovation	Bogh Engineering LLC	P0164542	\$20,564.00	Change Order No. 2 Scope Revisions
Fine Arts Building Renovation	Verne's Plumbing Inc.	P0164544	\$18,550.00	Change Order No. 11 Scope Revisions
Fine Arts Building Renovation	Best Contracting Services	P0164848	\$11,831.00	Change Order No. 4 Scope Revisions
Fine Arts Building Renovation	Pecoraro	P0164743	\$29,386.00	Change Order No. 2 Scope Revisions
Fine Arts Building Renovation	Stolo Cabinets, Inc	P0165545	\$14,288.00	Change Order No. 2 Scope Revisions
Fine Arts Building Renovation	M.S. Rouse Company	P0164744	\$40,353.00	Change Order No. 2 Scope Revisions
Fine Arts Building Renovation	Verne's Plumbing, Inc.	P0164544	\$22,285.00	Change Order No. 12 Scope Revisions
Fine Arts Building Renovation	Bogh Engineering LLC	P0164542	\$22,984.00	Change Order No. 3 Scope Revisions
Fine Arts Building Renovation	Caston, Inc.	P0164712	\$25,404.00	Change Order No. 7 Scope Revisions
Fine Arts Building Renovation	Inland Building Companies, Inc.	P0164711	\$27,822.00	Change Order No. 14 Scope Revisions
LLRC Exterior Patio	Division of State Architects	R0209737	\$13,300.00	DSA Construction Documents Filing Fee
Softball Field Renovations	Geotechnical Solutions, Inc.	P0180434	\$10,300.00	Adjustment to Contract for Geotechnical Services



# ESTIMATED PROJECT BUDGETS

## Fullerton Campus

### CURRENT PROJECTS

### PROJECT BUDGET/VARIANCE REPORT—FULLERTON

CURRENT PROJECTS	Measure J Budget JAN FY 2025-26	Measure J Budget APR FY 2025-26	Variance	Measure J Expenses APR FY 2025-26	Balance
Renovate Building 300	\$ 22,982,000	<sup>3</sup> \$ 20,065,685	\$ (2,916,315)	\$ 18,469,332	\$ 1,596,353
New M & O Building	\$ 6,399,604	\$ 6,399,604	\$ -	\$ 5,811,449	\$ 588,155
Student Support Center	\$ 28,302,917	<sup>2</sup> \$ 26,902,917	\$ (1,400,000)	\$ 25,974,625	\$ 928,292
New Performing Arts Complex—Demolish Buildings 1100 and 1300	\$ 92,005,166	\$ 92,005,166	\$ -	\$ 5,961,567	\$ 86,043,599
Wilshire Chiller Plant Relocation	\$ 15,726,321	<sup>1</sup> \$ 16,487,409	\$ 761,088	\$ 16,202,697	\$ 284,712
Softball Field Improvements	\$ 7,000,000	\$ 7,000,000	\$ -	\$ 431,435	\$ 6,568,565
New Welcome Center & Lot C West	\$ 39,000,000	\$ 39,000,000	\$ -	\$ -	\$ 39,000,000
New Horticulture/Lab School/STEM Lab	\$ 25,167,636	\$ 25,167,636	\$ -	\$ 22,213	\$ 25,145,423
Update/improve Infrastructure	\$ 10,630,486	\$ 10,630,486	\$ -	\$ -	\$ 10,630,486
Update/Improve Infrastructure (SS - New M&O)	\$ 150,000	\$ 150,000	\$ -	\$ 114,906	\$ 35,094
New Parking Structure	\$ 5,265,833	\$ 5,265,833	\$ -	\$ -	\$ 5,265,833
Chapman Avenue Site Acquisition*	\$ -	<sup>4</sup> \$ 2,201,655	\$ 2,201,655	\$ -	\$ 2,201,655
Planning (Non Project Specific)	\$ 5,535,767	<sup>1,2,3,4</sup> \$ 6,889,339	\$ 1,353,572	\$ 513,584	\$ 6,375,755
<b>COMPLETED PROJECTS</b>					
Update/improve Infrastructure (IT)	\$ 7,571,018	\$ 7,571,018	\$ -	\$ 4,356,745	\$ 3,214,273
New Instructional Building	\$ 50,115,010	\$ 50,115,010	\$ -	\$ 50,115,010	\$ -
Central Plant Replacement & Expansion	\$ 9,004,296	\$ 9,004,296	\$ -	\$ 9,004,296	\$ -
Greenhouse Replacement	\$ 398,664	\$ 398,664	\$ -	\$ 398,664	\$ -
Update/Improve Infrastructure (IT - Instructional Bldg.)	\$ 278,982	\$ 278,982	\$ -	\$ 278,982	\$ -
Update/Improve Infrastructure (Bldg. 300-500 Sewer Line)	\$ 444,702	\$ 444,702	\$ -	\$ 444,702	\$ -
<b>SUB TOTAL</b>	<b>\$ 325,978,403</b>	<b>\$ 325,978,403</b>	<b>0</b>	<b>\$ 138,100,206</b>	<b>\$ 187,878,196</b>

- Budget Transfer 2026-063 FC MJ Interest Earned from FC Planning ( Non Project Specific) Project to Wilshire Chiller Plant Relocation Project.
  - Budget Transfer 2026-064 FC MJ from Student Support Center Project to FC Planning ( Non Project Specific) Project
  - Budget Transfer 2026-065 FC MJ from Renovate Building 300 project to FC Planning ( Non Project Specific) Project
  - Budget Transfer 2026-067 FC MJ from FC Planning ( Non Project Specific) Project to 446 E Chapman Lot Acquisition Project. New Project is created.
- \*Project fund is reflected as 446. E. Chapman Lot Acquisition in Banner.



# ENCUMBRANCES OVER \$10,000

## Fullerton Campus - New Encumbrances (February - April 2026)

Project	Vendor	Purchase Order No.	Purchase Order Amount	Scope of Work
New Horticulture Lab School/STEM Lab	David Evans and Associates, Inc.	P0180377	\$59,900.00	Topographic Survey
New Horticulture Lab School/STEM Lab	Geotechnical Solutions, Inc.	P0180822	\$28,000.00	Topographic Survey
New Horticulture Lab School/STEM Lab	Gensler	P0181288	\$373,355.00	Architect of Record Services
New M&O Building	BN Builders, Inc.	P0162647	\$117,260.00	Amendment No. 3 For Time Delay and Scope Revisions
Renovate Building 300	Ollivier Corporation	P0180289	\$114,200.13	Building Access Control Components & Installation
Renovate Building 300	Dellyn Design LLC	P0179457	\$20,375.00	FF&E Implementation
Renovate Building 300	CDW Government, Inc.	P0180541	\$68,053.76	FF&E Services: Workstations
Renovate Building 300	Kling Van & Storage, Inc.	R0209733	\$10,115.00	Moving Services
Student Support Center	Integrity Electric	R0209322	\$12,709.86	UPS Circuit Installation
Student Support Center	BN Builders, Inc.	P016247	\$452,922.00	Amendment No. 3 For Time Delay and Scope Revisions
Wilshire Chiller Plant Relocation	MAAS Companies, Inc.	P0161764	\$50,000.00	Amendment No. 3 Increase for Construction Management Services
Wilshire Chiller Plant Relocation	Plumbing Piping & Construction, Inc.	P0166314	\$1,215,128.00	Adjustment to Existing Contract For Project Delays



# ESTIMATED PROJECT BUDGETS

## Anaheim Campus

### CURRENT PROJECTS

### PROJECT BUDGET/VARIANCE REPORT—ANAHEIM

CURRENT PROJECTS	Measure J Budget JAN FY 2025-26		Measure J Budget APR FY 2025-26	Variance	Measure J Expenses APR FY 2025-26	Balance
Develop Interior and Exterior Signage	\$ 1,437,431	1	\$ 2,737,431	\$ 1,300,000	\$ 1,300,112	\$ 1,437,319
Restore East Parking Lot	\$ 2,521,574		\$ 2,521,574	\$ -	\$ 407,574	\$ 2,114,000
Exterior Green Community Space Enhancement	\$ 1,938,926	3	\$ 2,967,926	\$ 1,029,000	\$ 165,540	\$ 2,802,386
2nd Floor Admission & Records and Lobby Remodel	\$ 1,138,049		\$ 1,138,049	\$ -	\$ -	\$ 1,138,049
1st. Floor Remodel Student Center and Classrooms	\$ 2,352,720		\$ 2,352,720	\$ -	\$ -	\$ 2,352,720
Pedestrian and Vehicular Traffic Flow	\$ 2,329,000	1,3	\$ -	\$ (2,329,000)	\$ -	\$ -
4th Floor Improvements	\$ 218,000		\$ 218,000	\$ -	\$ -	\$ 218,000
Update/improve Infrastructure	\$ 224,938		\$ 224,938	\$ -	\$ -	\$ 224,938
Planning (Non Project Specific)	\$ 1,407,132	2	\$ 1,407,013	\$ (120)	\$ 16,315	\$ 1,390,698
<b>COMPLETED PROJECTS</b>						
Update/improve Infrastructure (IT)	\$ 775,062		\$ 775,062	\$ -	\$ 775,062	\$ -
Update/improve Infrastructure (Swing Space-IH)	\$ 669,290		\$ 669,290	\$ -	\$ 669,290	\$ -
Swing Space Projects/ Interim Housing	\$ 1,605,764		\$ 1,605,764	\$ -	\$ 1,605,764	\$ -
Update/improve Infrastructure (Secondary MDF)	\$ 97,250		\$ 97,250	\$ -	\$ 97,250	\$ -
7th and 10th Floors Buildout	\$ 915,972		\$ 915,972	\$ -	\$ 915,972	\$ -
5th Floor CTE & 2nd Floor Room 215	\$ 640,736		\$ 640,736	\$ -	\$ 640,736	\$ -
Swing Space Hotel, Restaurant, and Culinary Arts	\$ 2,497,127		\$ 2,497,127	\$ -	\$ 2,497,127	\$ -
Outdoor Patio Remodel	\$ 1,034,555		\$ 1,034,555	\$ -	\$ 1,034,555	\$ -
Anaheim Campus Tower First Floor Life/Safety Renovation	\$ 1,996,618	2	\$ 1,996,738	\$ 120	\$ 1,996,618	\$ 120
<b>SUB TOTAL</b>	<b>\$ 23,800,144</b>		<b>\$ 23,800,144</b>	<b>\$ -</b>	<b>\$ 12,121,916</b>	<b>\$ 11,678,229</b>

- Budget Transfer 2026-068-AC MJ from Pedestrian and Vehicular Traffic Flow Project to Develop Interior and Exterior Signage Project
- Budget Transfer 2026-069 R1-AC MJ from Planning (Non Project Specific) Project to Anaheim Tower First Floor Life/Safety Renovation Project to adjust the Budget for State overpaid rounding amount and DSA alteration expenses
- Budget Transfer 2026-071-AC MJ from Pedestrian and Vehicular Traffic Flow Project to Exterior Green Community State Enhancement Project



## ENCUMBRANCES OVER \$10,000

### Anaheim Campus - New Encumbrances (February - April 2026)

Project	Vendor	Purchase Order No.	Purchase Order Amount	Scope of Work
Anaheim Tower First Floor Life/Safety Renovation	PCL Construction Services, Inc.	P0179795	\$24,999.00	Parking Deck Water Leak Repairs
Exterior Green Community Space Enhancement	KPFF Consulting Engineering	<i>R0209664</i>	\$13,930.00	Underground Utility Survey Services
Exterior Green Community Space Enhancement	Converse Consultants	<i>R0209663</i>	\$10,000.00	Environmental Consulting Services
Exterior Green Community Space Enhancement	Ninyo & Moore	P0181402	\$47,856.00	Materials Testing and Special Inspection Services
Restore East Parking Lot	PaveWest, Inc.	P0179006	\$55,409.00	Integration of Additional Project Scope of Work



# ESTIMATED PROJECT BUDGETS

## District

### PROJECT BUDGET/VARIANCE REPORT—DISTRICT

DISTRICT WIDE EXPENSE	Measure J Budget JAN FY 2025-26	Measure J Budget APR FY 2025-26	Variance	Measure J Expenses APR FY 2025-26	Balance
Program Management Fees	\$ 20,000,000	\$ 20,000,000	\$ -	\$ 13,501,275	\$ 6,498,725
Bond Issuance Cost	\$ 3,544,600	\$ 3,544,600	\$ -	\$ 2,048,689	\$ 1,495,911
Holding Account	\$ 902,947 1	\$ 1,282,624	\$ 379,677	\$ -	\$ 1,282,624
<b>SUB TOTAL</b>	<b>\$ 24,447,547</b>	<b>\$ 24,827,224</b>	<b>\$ 379,677</b>	<b>\$ 15,549,964</b>	<b>\$ 9,277,260</b>

1. Estimated Interest Earned amount was increased by \$379,677 due to Fiscal Affairs Executive Director



# ENCUMBRANCES OVER \$10,000

## District - New Encumbrances (February - April 2026)

Project	Vendor	Purchase Order No.	Purchase Order Amount	Scope of Work
There are no Updates Available for this Reporting Period.				



# ACTIVE PROJECTS

## 90-Day Look Ahead



NORTH ORANGE COUNTY COMMUNITY COLLEGE DISTRICT  
 CYPRESS - FULLERTON - ANAHEIM (NOCE)  
**90-DAY LOOK AHEAD SCHEDULE**  
 (05-01-26 TO 07-31-26)



	May				June					July				Comments
	5	12	19	26	2	9	16	23	30	7	14	21	28	
<b>GENERAL</b>														
NOCCCD Board Meetings														May 12 & 26, June 9 & 23, July 14 & 28
COC Meetings														Wednesday, June 3, 2026
Bond Program Management Team Meetings														May 19, June 16, Tentative July 21
<b>PROFESSIONAL SERVICES PROCUREMENT - RFP/RFQ</b>														
<b>DISTRICT</b>														
Requests for Qualifications for Pools														
RFQ Release for Commissioning Pool														Complete
RFQ Review & Selection of Commissioning Candidates														In Progress
Board Agenda Item (BAI) for Selected Pool of Firms														Anticipated Presentation on June 9
RFQ Release for Scheduling Pool														Complete
RFQ Review & Selection of Scheduling Pool Candidates														In Progress
Board Agenda Item (BAI) for Selected Pool of Firms														Anticipated Presentation on June 23
RFQ Release for Cost Estimating Pool														Complete
RFQ Review & Selection of Cost Estimating Pool Candidates														In Progress
Board Agenda Item (BAI) for Selected Pool of Firms														Anticipated Presentation on June 23
<b>PLANNING PHASE</b>														
<b>CYPRESS</b>														
SEM (FASS) Building 3 Demolition & Site Restoration														
Planning														AOR Procurement Upcoming Summer 2026
<b>DESIGN PHASE</b>														
<b>CYPRESS</b>														
LLRC Exterior Patio														
Construction Documents (CDs) - 60 Percent														Complete
Construction Documents (CDs) - 100 Percent														In Progress
Softball Field Renovations														
CDs - Incorporate the CGS Approved Submittal														Predicated on CGS Approval in mid-May
Central Plant Upgrade														
Guaranteed Maximum Price (GMP) - Negotiation														Complete
BAI for Agreement on GMP														Anticipated on May 12
District Execution of Contract														Anticipated to start May 13
Start of Phase 2 - Design Development														Anticipated to Start in late May
100 Percent Construction Documents														Upcoming Anticipated Start in mid-July
<b>FULLERTON</b>														
New Horticulture/Lab School/STEM Lab														
Preliminary Plans (Planning & Schematic Design)														Complete
Working Drawings (Design Development & CDs)														Anticipated Start in July Contingent on CCCC Approval
Infrastructure Assessment - Bldgs. 1100, 1300 & 500														
Comments Incorporated into Report by P2S														Complete
Finalized Report & Cost Estimate for Infrastructure Projects														Complete
Scope of Work Development														In Progress
<b>DSA PHASE &amp; AGENCY REVIEW</b>														
<b>CYPRESS</b>														
Softball Field Renovations														
CGS Review - Second Review														In Progress
DSA Review														Start July Contingent on CGS Approval
LLRC Exterior Patio														
DSA Review of CDs														Mid-July Start & Contingent on CDs Completion
<b>FULLERTON</b>														
Softball Field Improvements														
CGS Review														Approval Received April 22
DSA Review														Approval Received April 23
New Horticulture/Lab School/STEM Lab														
CCCCO Review/Approval of Preliminary Drawings														Upcoming in mid-May
Earliest Availability of Funding for Working Drawings														Anticipated July 2



# ACTIVE PROJECTS

## 90-Day Look Ahead



NORTH ORANGE COUNTY COMMUNITY COLLEGE DISTRICT  
 CYPRESS - FULLERTON - ANAHEIM (NOCE)  
**90-DAY LOOK AHEAD SCHEDULE**  
 (05-01-26 TO 07-31-26)



	May				June				July				Comments
	5	12	19	26	2	9	16	23	30	7	14	21	
<b>BIDDING PHASE</b>													
<b>ANAHEIM</b>													
Exterior Green Community Space Enhancement													
Prequalification of General Contractors (GC)													
RFQ Release to GC Firms													
Campus Project Team Review & Shortlist GC Firms													
Bid Document Released to Prequalified Firms													
Firm Review & Selection by Campus Project Team													
BAI Presentation for Selected Firm													
<b>FULLERTON</b>													
Softball Field Improvements													
General Contractor Bidding													
Bid Document Release and Bidding													
<b>PRE-CONSTRUCTION PHASE</b>													
<b>ANAHEIM</b>													
Exterior Green Community Space Enhancement													
Notice to Proceed with Construction (NTP)													
Develop Interior & Exterior Signage													
Interior Signage													
Signage Samples, Approvals, Submittals, and Signage Fabrication													
<b>CONSTRUCTION PHASE</b>													
<b>ANAHEIM</b>													
Exterior Green Community Space Enhancement													
Site Demolition and Grading													
Soil Excavation													
Develop Interior & Exterior Signage													
Interior Signage													
Old Signage Demolition, Wall Patching, Wooden Slats, Painting													
Interior Signage Installation													
Restore East Parking Lot													
Landscaping													
Light Pole Foundations													
Electrical Work													
EV Charging Station Installation													
<b>CYPRESS</b>													
Fine Arts Building Renovation													
Building Enclosure													
Window Testing													
Exterior Improvements													
Site Work - Hardscaping, Flatwork, Tree Planting, Flatwork													
Interior Improvements													
Labs - All Levels - Hardware, A-V and Instructional Equipment													
Elevators													
Finishes - All Floors - Lobby, Labs, Offices, Restrooms													
Owner Furnished Contractor Installed - Specialized Equipment & Furniture													
Commissioning Activities - Equipment Start & Testing													
<b>FULLERTON</b>													
Renovate Building 300													
Door, Hardware, & Access Control - Exterior													
Door, Hardware, & Access Control - Installation & Programming													
Interior Improvements													
Interior Door, Hardware, & Access Control													
Furniture, Fixtures & Equipment													
<b>New Performing Arts Complex</b>													
Tank Abatement and Removal													
West Building (Classroom Building and Recital Hall)													
CMU Wall Installation First Level - Scaffold up, Lifts & Grouting, 1-6													
CMU Wall Installation Second Level - Scaffold up, Lifts & Grouting, 1-6													
Level 2 Structure W. Bldg. - Steel Columns, Beams, and Decking													
Roof Framing - Steel Girders, Framing													



# ACTIVE PROJECTS

## 90-Day Look Ahead



NORTH ORANGE COUNTY COMMUNITY COLLEGE DISTRICT  
 CYPRESS - FULLERTON - ANAHEIM (NOCE)  
**90-DAY LOOK AHEAD SCHEDULE**  
 (05-01-26 TO 07-31-26)



	May				June					July				Comments
	5	12	19	26	2	9	16	23	30	7	14	21	28	
<b>CONSTRUCTION PHASE</b>														
<b>FULLERTON</b>														
New M&O Building & Student Support Center														
Building Finishes														
Uninterrupted Power Supply for Entry Doors														
Complete														
Update/Improve (SS New M&O)														
Final Relocation of Bins & Dismantling of Swing Space														
Anticipated Start in Summer 2026														
<b>CLOSE-OUT PHASE</b>														
<b>ANAHEIM</b>														
Restore East Parking Lot														
Substantial Completion														
Achieved April 10														
Punch-List Activities														
Complete														
Final Completion														
Anticipated June 9														
Financial Close-Out														
In Progress														
Develop Interior & Exterior Signage														
Exterior Signage														
Financial Close-Out														
In Progress														
Interior Signage														
Substantial Completion														
Upcoming Anticipated October 27														
<b>CYPRESS</b>														
Fine Arts Building Renovation														
Substantial Completion														
Anticipated on June 29														
Punch-List Activities														
Anticipated to Start on May 23														
Final Completion														
Anticipated on July 28														
Financial Close-Out														
Anticipated to Start May														
CCCCO Close-Out														
Upcoming Anticipated to Start July 28, 2026														
<b>FULLERTON</b>														
Renovate Building 300														
Punch-List Activities (Contractor and FF&E)														
In Progress														
Final Completion														
Anticipated Completion May 26														
Financial Close-Out														
In Progress														
CCCCO Close-Out														
In Progress														
Wilshire Chiller Plant Relocation														
Punch-List Activities														
Complete														
Final Completion														
Final Completion Anticipated on June 9														
Financial Close-Out														
In Progress														
New M&O Building & Student Support Center														
Punch-List														
Complete														
Final Completion														
Completed March 24														
Financial Close-Out														
In Progress														



**June 2026**

# Citizens' Oversight Committee

**COOC**

## **Measure J Bond Program**



1830 W. Romneya Dr., Building B., Anaheim, CA 92801